



**TEAM LEW'S®  
PRO SP  
PSP1XH**



**9** Bearing System **20** LB. MAX DRAG

**Reel Specifications**

Model	Weight (oz.)	Gear Ratio	Line Capacity (yd./lb.)	Max Drag (lb.)	RPT*
PSP1XH	6.0	8.3:1	40/20	20	30"

\*Recovery per turn.

**FEATURES:**

- One-piece aluminum frame
- Premium 9-bearing system with stainless steel double shielded ball bearings and Zero Reverse® one-way clutch bearing
- P2 bearing supported pinion gear provides precise alignment and solid stability, resulting in a smoother operation and extended gear life
- SpeedCast® QuiteCast externally Adjustable Centrifugal Brake (ACB) system with skipping zone
- High strength, aircraft grade, hard anodized aluminum gearing
- Durable carbon fiber drag, provides up to 20lbs. of drag power
- Shallow spool design with knot slot
- Audible click, bowed, double anodized aluminum drag star
- Lew's patented Speed Keeper® hook keeper
- Zirconia line guide
- External lube port

**Driven by innovation – Fueled with Passion  
Feel the Difference!**

**ATTENTION BRAIDED LINE USERS!**

If your Lew's Baitcast reel has pre-drilled holes in the spool, you may tie your braid directly to the spool, by passing the braid thru the provided holes and tying a uni-knot.

If your Lew's baitcast reel does not have pre-drilled holes in the spool, you will need to first tie on and spool at least 20 revolutions of monofilament line, and then tie your braided line to the monofilament line, with either a back-to-back uni-knot or an Albright knot.

Continue to spool your reel as normal, keeping strong tension on the line to ensure the line is firmly wound onto the spool to keep from "digging in" to underlying line layers when pressure is put on the line from fighting fish.

**FAILURE TO PROPERLY SPOOL BRAIDED LINE ONTO YOUR REELS SPOOL WILL RESULT IN LINE SLIPPAGE, AND THE IMPRESSION YOUR DRAG IS NOT WORKING PROPERLY.**

**Performance — Right out of the Box!**

Your Speed Spool® reel is designed for performance and functionality. From the way it conforms to your hand, to the way it reacts crisply and effortlessly to your command, you'll know the minute you grab onto your Speed Spool® that you've got a quality reel. Your Speed Spool® reel exploits several new developments which will allow you to set yourself apart from the competition.

**One-piece Aluminum Frame** Your Speed Spool® reel utilizes a one-piece all aluminum frame so that you'll never have to worry about frame torque or twisting.



**Machined Anodized Aluminum Spool** The shallow spool reduces total weight of spool and line enabling faster spool start up and more efficient braking while eliminating deep spool backlash tangles. The innovative Knot Slot machined slot and hole design eliminates knot bulge for smoother cast when thumbing the high performance shallow spool.



**Speed Gears** Lew's Speed Gears® are cut on precision Hamai CNC gear hobbing machines resulting in an efficient drive train with less gear feel.



**P2 Bearing** The P2 bearing supported pinion maintains precise alignment with the drive gear for improved gear lie. The result is smooth crank power even when under load. An added benefit is reduced friction with the spool shaft resulting in enhanced casting performance.



**Zero Reverse Bearing** The handle on your Speed Spool reel will only rotate forward for rock solid hook setting. When you release the handle, it will hold its position because of the Zero Reverse® bearing, never losing an inch on your catch; an invaluable property to have when you're pulling it in.



**QuietCast 6-Pin Externally Adjustable Centrifugal Brake System (ACB) with Skipping Zone**

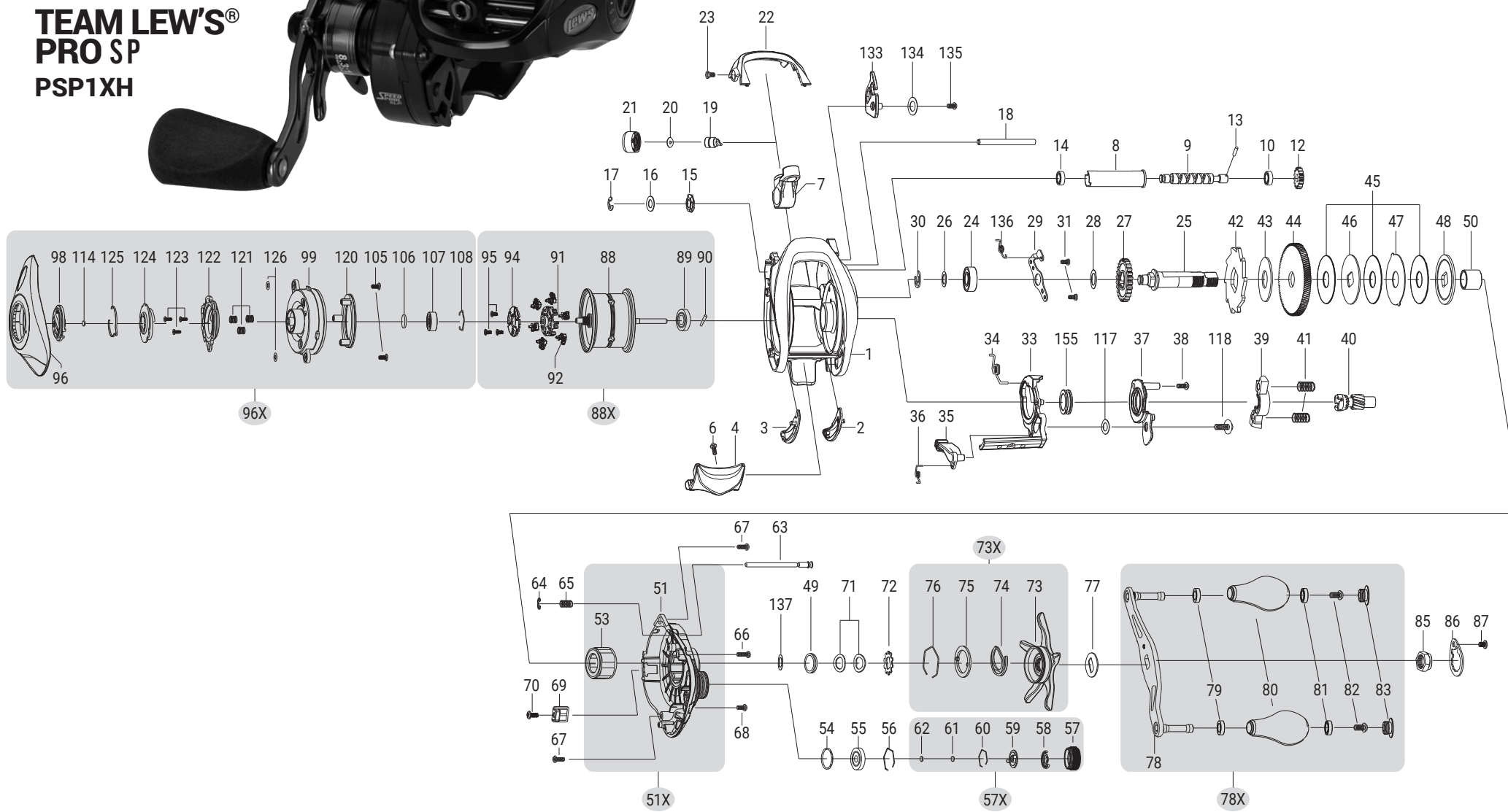
The QuietCast® Adjustable Centrifugal Brake System delivers an extreme range of braking power without the noise normally associated with centrifugal brake systems. Adjustable from free spool to maximum by

simply clicking its external dial to choose among 27 variable settings. The QuietCast system puts you in control of your casts, perfectly aligning brake power to conditions. Use the orange Skipping Zone settings for reduced backlash and improved cast while skipping and pitching. With this system you will have precise casting control over light lures, while maximizing casting distance with all lures.

**Our 95mm bowed aluminum handle** will give you all the cranking power you need. The custom EVA knobs are an added bonus known for a comfortable grip for all day fishing.



**TEAM LEW'S®  
PRO SP  
PSP1XH**



KEY #	PART NAME	KEY #	PART NAME	KEY #	PART NAME
1	FRAME	45	DRAG WASHER-L	81	BALL BEARING
2	CLUTCH BAR PLATE-R	46	DRAG WASHER-D1	82	HANDLE KNOB SCREW
3	CLUTCH BAR PLATE-L	47	DRAG WASHER-A	83	HANDLE KNOB CAP
4	CLUTCH BAR	48	DRAG WASHER-D2	85	HANDLE KNOB SCREW
6	CLUTCH BAR SCREW	49	SLEEVE WASHER(OPTIONAL)	86	HANDLE KNOB CAP
7	LEVELWIND ASSEMBLY	50	SLEEVE		HANDLE NUT
8	PIPE	51	GEAR SIDEPLATE	87	HANDLE NUT RETAINER SCREW
9	WORM SHAFT		<b>51X GEAR SIDEPLATE ASSEMBLY</b>	88	SPOOL
10	BALL BEARING	53	ONE-WAY CLUTCH BEARING		<b>88X SPOOL ASSEMBLY</b>
12	IDLER-S	54	O-RING	89	BALL BEARING
13	WORM SHAFT PIN	55	BALL BEARING	90	PIN
15	WORM SHAFT BUSHING-B	56	BEARING RETAINER	91	BRAKE HOLDER
16	WORM SHAFT WASHER	57	CAST CONTROL CAP	92	BRAKE SHOE ASSEMBLY
17	E-RING		<b>57X CAST CONTROL CAP ASSEMBLY</b>	94	BRAKE HOLDER PLATE
18	PILLAR	58	CLICKER	95	SCREW
19	LEVELWIND PIN	59	CLICK PLATE	96	PALM SIDEPLATE
20	SPACER(OPTIONAL)	60	CLICK PLATE RETAINER		<b>96X PALM SIDEPLATE ASSEMBLY</b>
21	LEVELWIND NUT	61	TENSION WASHER	98	CONTROL DIAL
22	FRONT COVER SCREW-A	62	SPOOL SPACER-B	99	SPOOL COVER
23	FRONT COVER SCREW-A	63	LOCKING PIN	105	SPOOL COVER SCREW
24	BALL BEARING	64	E-RING	106	SPOOL SPACER-A
25	CRANK SHAFT	65	LOCKING PIN SPRING	107	BALL BEARING
26	CRANK SHAFT WASHER (OPTIONAL)	66	GEAR SIDE COVER SCREW-A	108	BEARING RETAINER
27	IDLER-L	67	GEAR SIDE COVER SCREW-B	114	WASHER(OPTIONAL)
28	IDLER-L WASHER-B	68	GEAR SIDE COVER SCREW-C	117	CLUTCH WASHER
29	BEARING PLATE	69	LUBE PORT CAP	118	CLUTCH SCREW
30	E-RING	70	LUBE PORT CAP SCREW	121	SLIDE CAM SPRING
31	BEARING PLATE SCREW	71	DRAG SPRING WASHER	122	SLIDE CAM-H
33	CLUTCH CAM	72	CLICK HOLDER	123	SLIDE CAM SCREW
35	CLUTCH SPRING	73	STAR DRAG	124	SLIDE CAM-D
36	KICK LEVER		<b>73X STAR DRAG ASSEMBLY</b>	125	CLICK SPRING
36	KICK LEVER SPRING	74	CLICK LEAF SPRING	126	LINK PLATE
39	PINION YOKE	75	CLICK PLATE	128	SPOOL COVER SPACER
40	PINION GEAR	76	CLICK PLATE RETAINER	133	HOOK HOLDER
41	PINION YOKE SPRING	77	HANDLE WASHER	135	HOOK HOLDER SCREW
42	RATCHET	78	HANDLE		<b>78X HANDLE ASSEMBLY</b>
43	RATCHET WASHER	79	BALL BEARING	136	HOOK HOLDER SPRING
44	DRIVE GEAR	80	HANDLE KNOB	137	DRAG SPACER
				155	BUSHING

**MAINTENANCE AND CARE**

When applying lubricant to your Speed Spool reel, avoid using multi-purpose oil. Use lightweight oils or greases made for fishing reels. Apply oil to all bearings, the crankshaft and the worm gear. Apply grease to the bushings, pinion gears, drive gears, and crank gears.

After usage, your reel should be inspected for dirt or sand and cleaned if excessive build-up is present. If your reel has come in contact with saltwater it is important to flush all parts with water, dry and re-lubricate your reel. Through diligent cleaning and maintenance your Lew's reel will provide you with years of reliability and sound performance.

**fig 1** To remove palming sideplate pull locking pin (63) away from reel body.

