

# LEW'S SPEED SPOOL® LFS

SS1A, SS1HA, SS1SHA



## Reel Specifications

| Model  | Weight (oz.) | Line Capacity (yds./lbs.) | Gear Ratio | RPT* (in.) |
|--------|--------------|---------------------------|------------|------------|
| SS1SA  | 7.1          | 140/12                    | 5.6:1      | 23"        |
| SS1HA  | 7.1          | 120/12                    | 6.8:1      | 28"        |
| SS1SHA | 7.1          | 120/12                    | 7.5:1      | 31"        |

\*Rotation per turn

### FEATURES:

- One-piece aluminum frame
- Premium 10-bearing system with stainless steel double shielded ball bearings and Zero Reverse® one-way clutch bearing
- P2 bearing supported pinion gear provides precise alignment and solid stability, resulting in smoother operation and extended gear life
- Externally adjustable Magnetic Control System(MCS)
- Lightweight anodized aluminum 34mm spool
- High strength solid brass Speed Gears, cut on precision Hamai CNC gear hobbing machines
- Durable Rulon drag system provides up to 15lbs. drag power
- Audible click, bowed, graphite drag star
- Zirconia line guide • External lube port
- 95mm bowed aluminum handle with Lew's® custom SoftTouch contoured paddles

## Driven by innovation – Fueled with Passion Feel the Difference!

### ATTENTION BRAIDED LINE USERS!

If your Lew's Baitcast reel has pre-drilled holes in the spool, you may tie your braid directly to the spool, by passing the braid thru the provided holes and tying a uni-knot.

If your Lew's baitcast reel does not have pre-drilled holes in the spool, you will need to first tie on and spool at least 20 revolutions of monofilament line, and then tie your braided line to the monofilament line, with either a back-to-back uni-knot or an Albright knot.

Continue to spool your reel as normal, keeping strong tension on the line to ensure the line is firmly wound onto the spool to keep from "digging in" to underlying line layers when pressure is put on the line from fighting fish.

FAILURE TO PROPERLY SPOOL BRAIDED LINE ONTO YOUR REELS SPOOL WILL RESULT IN LINE SLIPPAGE, AND THE IMPRESSION YOUR DRAG IS NOT WORKING PROPERLY.

## Performance — Right out of the Box!

Your Speed Spool® LFS reel is designed to be Lighter, Faster and Stronger. From the way it conforms to your hand, to the way it reacts crisply and effortlessly to your command, you'll know the minute you grab onto your Speed Spool® LFS that you've got a quality reel. Your Speed Spool LFS reel exploits several new developments which will allow you to set yourself apart from the competition.

**One-piece Aluminum Frame** Your Speed Spool® reel utilizes a one-piece all aluminum frame so that you'll never have to worry about frame torque or twisting.

**Lightweight Anodized Aluminum Spool** The spool of your Speed Spool reel has been engineered to maximize casting distance, anodized to withstand oxidation and abrasion.

**Speed Gears** Lew's Speed Gears are cut on precision Hamai CNC gear hobbing machines resulting in an efficient drive train with less gear feel.

**P2 Bearing** The P2 bearing supported pinion maintains precise alignment with the drive gear for improved gear lie. The result is smooth cranking power even when under load. An added benefit is reduced friction with the spool shaft resulting in enhanced casting performance.

**Zero Reverse Bearing** The handle on your Speed Spool reel will only rotate forward for rock solid hook setting. When you release the handle, it will hold its position because of the Zero Reverse bearing, never losing an inch on your catch; an invaluable property to have when you're pulling it in.

### Full-Release Magnetic Control System (MCS)

In order to combat backlash your Speed Spool reel is furnished with an externally adjustable, full-release magnetic braking system. As the spool accelerates it experiences magnetic resistance, which can be controlled with a dial on the palming sideplate. A full-release magnetic brake has the ability to be backed for enough away from the spool to completely negate any effect on the acceleration of the spool.



**Cast Control System** A second feature exists to prevent backlash, the Cast Control System. An adjustment knob is found next to the star drag. The function saddles the spool shaft with steady pressure in order to stabilize spool speed.

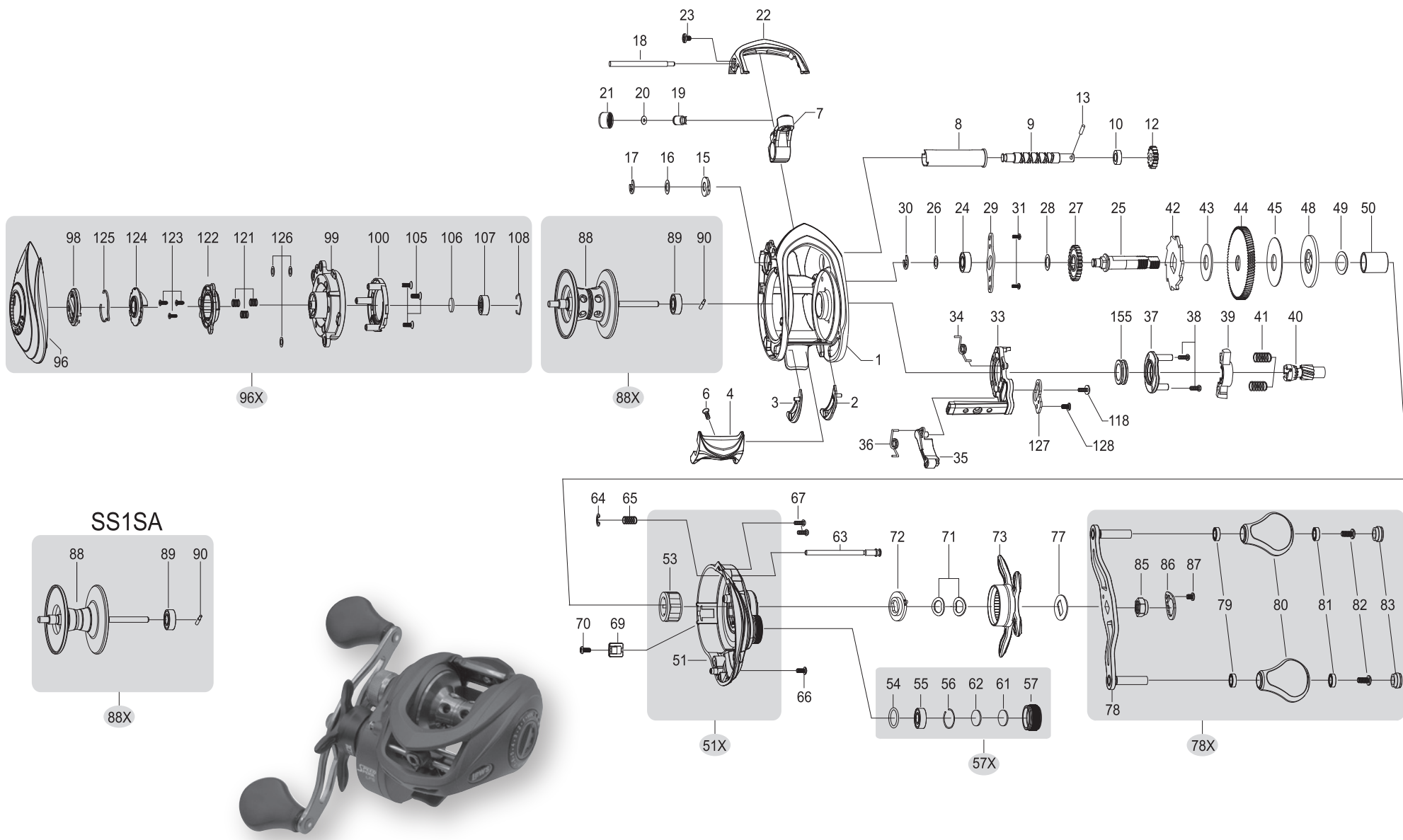
To calibrate the system reel your lure in until it rests on the tip of the rod, then tighten the knob until taut. Depress the thumb bar, and holding the rod horizontally loosen the knob slowly until the lure begins to descend. The spool should continue to spin after the lure contacts the ground, but should not complete more than one full rotation. If the spool does not continue to spin, the knob is too tight. If the spool completes more than one rotation, the knob is too loose. Repeat until you have achieved the desired results.

**Bowed 95mm Aluminum Handle** The 95mm bowed aluminum handle will give you all the cranking power you need. The Lew's custom SoftTouch handle knobs are an added bonus and will provide comfortable fit for all day fishing.

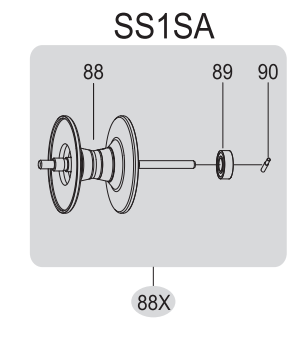


# SPEED SPOOL® LFS

SS1SA, SS1HA, SS1SHA



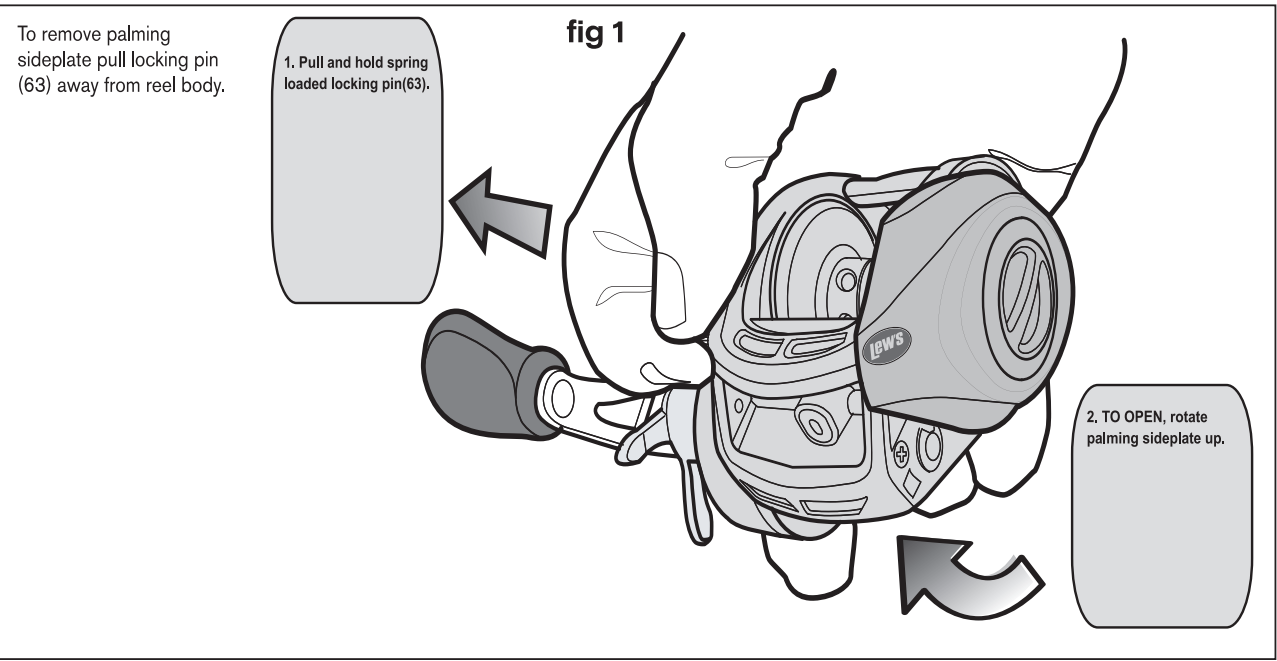
| KEY # | PART NAME               | KEY # | PART NAME                 | KEY # | PART NAME                   |
|-------|-------------------------|-------|---------------------------|-------|-----------------------------|
| 1     | FRAME                   | 39    | PINION YOKE               | 80    | HANDLE KNOB-2               |
| 2     | CLUTCH BAR PLATE-R      | 40    | PINION GEAR               | 81    | BALL BEARING-2              |
| 3     | CLUTCH BAR PLATE-L      | 41    | PINION YOKE SPRING (2)    | 82    | HANDLE KNOB SCREW-2         |
| 4     | CLUTCH BAR              | 42    | RATCHET                   | 83    | HANDLE KNOB CAP-2           |
| 6     | CLUTCH BAR SCREW        | 43    | RATCHET WASHER            | 85    | HANDLE NUT                  |
| 7     | LEVELWIND ASSEMBLY      | 44    | DRIVE GEAR                | 86    | HANDLE NUT RETAINER         |
| 8     | PIPE                    | 45    | DRAG WASHER-L             | 87    | HANDLE NUT RETAINER SCREW   |
| 9     | WORM SHAFT              | 48    | DRAG WASHER-D             | 88    | SPOOL                       |
| 10    | BALL BEARING            | 49    | SLEEVE WASHER (OPT)       | 88X   | SPOOL ASSEMBLY              |
| 12    | IDLER(S)                | 50    | SLEEVE                    | 89    | BALL BEARING                |
| 13    | WORM SHAFT PIN          | 51    | GEAR SIDEPLATE            | 90    | PIN                         |
| 15    | WORM SHAFT BUSHING (B)  | 51X   | GEAR SIDEPLATE ASSEMBLY   | 96    | PALM SIDEPLATE              |
| 16    | WORM SHAFT WASHER (OPT) | 53    | ONE-WAY CLUTCH            | 96X   | PALM SIDEPLATE ASSEMBLY     |
| 17    | E-RING                  | 54    | O-RING                    | 98    | CONTROL DIAL                |
| 18    | PILLAR                  | 55    | BALL BEARING              | 99    | SPOOL COVER                 |
| 19    | LEVELWIND PIN           | 56    | BEARING RETAINER          | 105   | SPOOL COVER SCREW-3         |
| 20    | SPACER (OPTIONAL)       | 57    | CAST CONTROL CAP          | 106   | SPOOL SPACER-A              |
| 21    | LEVELWIND NUT           | 57X   | CAST CONTROL CAP ASSEMBLY | 107   | BALL BEARING                |
| 22    | FRONT COVER             | 61    | TENSION WASHER            | 108   | BEARING RETAINER            |
| 23    | FRONT COVER SCREW-2     | 62    | SPOOL SPACER-B            | 110   | PILLAR-A                    |
| 24    | BALL BEARING            | 63    | LOCKING PIN               | 111   | DRAG SPRING WASHER          |
| 25    | CRANKSHAFT              | 64    | E-RING                    | 114   | WASHER (OPT)                |
| 26    | IDLER-L WASHER-A        | 65    | LOCKING PIN SPRING        | 120   | BRAKE PLATE HOLDER ASSEMBLY |
| 27    | IDLER-L                 | 66    | GEAR SIDEPLATE SCREW-A    | 121   | SLIDE CAM SPRING-3          |
| 28    | IDLER-L WASH-B          | 67    | GEAR SIDEPLATE SCREW-B    | 122   | SLIDE CAM-H                 |
| 29    | BEARING PLATE           | 69    | LUBE PORT CAP             | 123   | SLIDE CAM SCREW             |
| 30    | E-RING                  | 70    | LUBE PORT CAP SCREW       | 124   | SLIDE CAM-D                 |
| 31    | BEARING PLATE SCREW-2   | 71    | DRAG SPRING WASHER-2      | 125   | CLICK SPRING                |
| 33    | CLUTCH CAM              | 72    | CLICK PLATE ASSEMBLY      | 126   | SPOOL COVER SPACER (OPT)    |
| 34    | CLUTCH SPRING           | 73    | STAR DRAG                 | 155   | BUSHING                     |
| 35    | KICK LEVER              | 77    | HANDLE WASHER             |       |                             |
| 36    | KICK LEVER SPRING       | 78    | HANDLE                    |       |                             |
| 37    | CAM PLATE               | 78X   | HANDLE ASSEMBLY           |       |                             |
| 38    | CLUTCH CAM SCREW-2      | 79    | BALL BEARING-2            |       |                             |



**MAINTENANCE AND CARE**

When applying lubricant to your Speed Spool reel, avoid using multi-purpose oil. Use lightweight oils or greases made for fishing reels. Apply oil to all bearings, the crankshaft and the worm gear. Apply grease to the bushings, pinion gears, drive gears, and crank gears.

After usage, your reel should be inspected for dirt or sand and cleaned if excessive build-up is present. If your reel has come in contact with saltwater it is important to flush all parts with water, dry and re-lubricate your reel. Through diligent cleaning and maintenance your Lew's reel will provide you with years of reliability and sound performance.





SS1HLA, SS1SHLA



### Reel Specifications

| Model   | Weight (oz.) | Line Capacity (yds./lbs.) | Gear Ratio | RPT* (in.) |
|---------|--------------|---------------------------|------------|------------|
| SS1HLA  | 7.1          | 120/12                    | 6.8:1      | 28"        |
| SS1SHLA | 7.1          | 120/12                    | 7.5:1      | 31"        |

\*Rotation per turn

### FEATURES:

- One-piece aluminum frame
- Premium 10-bearing system with stainless steel double shielded ball bearings and Zero Reverse® one-way clutch bearing
- P2 bearing supported pinion gear provides precise alignment and solid stability, resulting in smoother operation and extended gear life
- Externally adjustable Magnetic Control System(MCS)
- Lightweight anodized aluminum 34mm spool
- High strength solid brass Speed Gears, cut on precision Hamai CNC gear hobbing machines
- Durable Rulon drag system provides up to 15lbs. drag power
- Audible click, bowed, graphite drag star
- Zirconia line guide • External lube port
- 95mm bowed aluminum handle with Lew's® custom SoftTouch contoured paddles

## Performance — Right out of the Box!

Your Speed Spool® LFS reel is designed to be Lighter, Faster and Stronger. From the way it conforms to your hand, to the way it reacts crisply and effortlessly to your command, you'll know the minute you grab onto your Speed Spool® LFS that you've got a quality reel. Your Speed Spool LFS reel exploits several new developments which will allow you to set yourself apart from the competition.

**One-piece Aluminum Frame** Your Speed Spool® reel utilizes a one-piece all aluminum frame so that you'll never have to worry about frame torque or twisting.

**Lightweight Anodized Aluminum Spool** The spool of your Speed Spool reel has been engineered to maximize casting distance, anodized to withstand oxidation and abrasion.

**Speed Gears** Lew's Speed Gears are cut on precision Hamai CNC gear hobbing machines resulting in an efficient drive train with less gear feel.

**P2 Bearing** The P2 bearing supported pinion maintains precise alignment with the drive gear for improved gear lie. The result is smooth cranking power even when under load. An added benefit is reduced friction with the spool shaft resulting in enhanced casting performance.

**Zero Reverse Bearing** The handle on your Speed Spool reel will only rotate forward for rock solid hook setting. When you release the handle, it will hold its position because of the Zero Reverse bearing, never losing an inch on your catch; an invaluable property to have when you're pulling it in.

### Full-Release Magnetic Control System (MCS)

In order to combat backlash your Speed Spool reel is furnished with an externally adjustable, full-release magnetic braking system. As the spool accelerates it experiences magnetic resistance, which can be controlled with a dial on the palming sideplate. A full-release magnetic brake has the ability to be backed for enough away from the spool to completely negate any effect on the acceleration of the spool.



**Cast Control System** A second feature exists to prevent backlash, the Cast Control System. An adjustment knob is found next to the star drag. The function saddles the spool shaft with steady pressure in order to stabilize spool speed.

To calibrate the system reel your lure in until it rests on the tip of the rod, then tighten the knob until taut. Depress the thumb bar, and holding the rod horizontally loosen the knob slowly until the lure begins to descend. The spool should continue to spin after the lure contacts the ground, but should not complete more than one full rotation. If the spool does not continue to spin, the knob is too tight. If the spool completes more than one rotation, the knob is too loose. Repeat until you have achieved the desired results.

**Bowed 95mm Aluminum Handle** The 95mm bowed aluminum handle will give you all the cranking power you need. The Lew's custom SoftTouch handle knobs are an added bonus and will provide comfortable fit for all day fishing.

## Driven by innovation — Fueled with Passion Feel the Difference!

### ATTENTION BRAIDED LINE USERS!

If your Lew's Baitcast reel has pre-drilled holes in the spool, you may tie your braid directly to the spool, by passing the braid thru the provided holes and tying a uni-knot.

If your Lew's baitcast reel does not have pre-drilled holes in the spool, you will need to first tie on and spool at least 20 revolutions of monofilament line, and then tie your braided line to the monofilament line, with either a back-to-back uni-knot or an Albright knot.

Continue to spool your reel as normal, keeping strong tension on the line to ensure the line is firmly wound onto the spool to keep from "digging in" to underlying line layers when pressure is put on the line from fighting fish.

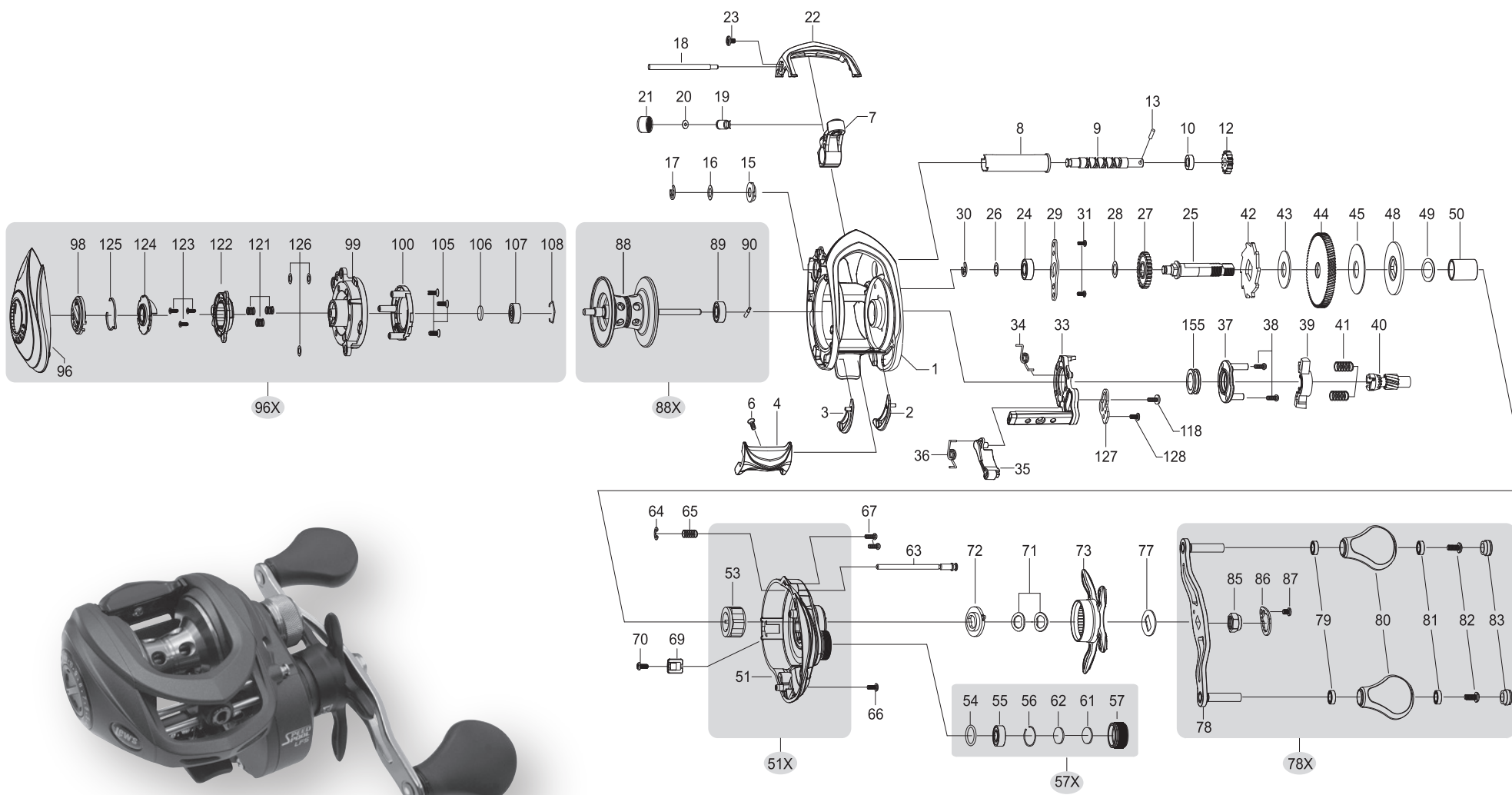
**FAILURE TO PROPERLY SPOOL BRAIDED LINE ONTO YOUR REELS SPOOL WILL RESULT IN LINE SLIPPAGE, AND THE IMPRESSION YOUR DRAG IS NOT WORKING PROPERLY.**





# SPEED SPOOL® LFS

SS1HLA, SS1SHLA



| KEY # | PART NAME               | KEY #      | PART NAME                        | KEY #      | PART NAME                      |
|-------|-------------------------|------------|----------------------------------|------------|--------------------------------|
| 1     | FRAME                   | 39         | PINION YOKE                      | 80         | HANDLE KNOB-2                  |
| 2     | CLUTCH BAR PLATE-R      | 40         | PINION GEAR                      | 81         | BALL BEARING-2                 |
| 3     | CLUTCH BAR PLATE-L      | 41         | PINION YOKE SPRING (2)           | 82         | HANDLE KNOB SCREW-2            |
| 4     | CLUTCH BAR              | 42         | RATCHET                          | 83         | HANDLE KNOB CAP-2              |
| 6     | CLUTCH BAR SCREW        | 43         | RATCHET WASHER                   | 85         | HANDLE NUT                     |
| 7     | LEVELWIND ASSEMBLY      | 44         | DRIVE GEAR                       | 86         | HANDLE NUT RETAINER            |
| 8     | PIPE                    | 45         | DRAG WASHER-L                    | 87         | HANDLE NUT RETAINER SCREW      |
| 9     | WORM SHAFT              | 48         | DRAG WASHER-D                    | 88         | SPOOL                          |
| 10    | BALL BEARING            | 49         | SLEEVE WASHER (OPT)              | <b>88X</b> | <b>SPOOL ASSEMBLY</b>          |
| 12    | IDLER(S)                | 50         | SLEEVE                           | 89         | BALL BEARING                   |
| 13    | WORM SHAFT PIN          | 51         | GEAR SIDEPLATE                   | 90         | PIN                            |
| 15    | WORM SHAFT BUSHING (B)  | <b>51X</b> | <b>GEAR SIDEPLATE ASSEMBLY</b>   | 96         | PALM SIDEPLATE                 |
| 16    | WORM SHAFT WASHER (OPT) | 53         | ONE-WAY CLUTCH                   | <b>96X</b> | <b>PALM SIDEPLATE ASSEMBLY</b> |
| 17    | E-RING                  | 54         | O-RING                           | 98         | CONTROL DIAL                   |
| 18    | PILLAR                  | 55         | BALL BEARING                     | 99         | SPOOL COVER                    |
| 19    | LEVELWIND PIN           | 56         | BEARING RETAINER                 | 105        | SPOOL COVER SCREW-3            |
| 20    | SPACER (OPTIONAL)       | 57         | CAST CONTROL CAP                 | 106        | SPOOL SPACER-A                 |
| 21    | LEVELWIND NUT           | <b>57X</b> | <b>CAST CONTROL CAP ASSEMBLY</b> | 107        | BALL BEARING                   |
| 22    | FRONT COVER             | 61         | TENSION WASHER                   | 108        | BEARING RETAINER               |
| 23    | FRONT COVER SCREW-2     | 62         | SPOOL SPACER-B                   | 110        | PILLAR-A                       |
| 24    | BALL BEARING            | 63         | LOCKING PIN                      | 111        | DRAG SPRING WASHER             |
| 25    | CRANKSHAFT              | 64         | E-RING                           | 114        | WASHER (OPT)                   |
| 26    | IDLER-L WASHER-A        | 65         | LOCKING PIN SPRING               | 120        | BRAKE PLATE HOLDER ASSEMBLY    |
| 27    | IDLER-L                 | 66         | GEAR SIDEPLATE SCREW-A           | 121        | SLIDE CAM SPRING-3             |
| 28    | IDLER-L WASH-B          | 67         | GEAR SIDEPLATE SCREW-B           | 122        | SLIDE CAM-H                    |
| 29    | BEARING PLATE           | 69         | LUBE PORT CAP                    | 123        | SLIDE CAM SCREW                |
| 30    | E-RING                  | 70         | LUBE PORT CAP SCREW              | 124        | SLIDE CAM-D                    |
| 31    | BEARING PLATE SCREW-2   | 71         | DRAG SPRING WASHER-2             | 125        | CLICK SPRING                   |
| 33    | CLUTCH CAM              | 72         | CLICK PLATE ASSEMBLY             | 126        | SPOOL COVER SPACER (OPT)       |
| 34    | CLUTCH SPRING           | 73         | STAR DRAG                        | 155        | BUSHING                        |
| 35    | KICK LEVER              | 77         | HANDLE WASHER                    |            |                                |
| 36    | KICK LEVER SPRING       | 78         | HANDLE                           |            |                                |
| 37    | CAM PLATE               | <b>78X</b> | <b>HANDLE ASSEMBLY</b>           |            |                                |
| 38    | CLUTCH CAM SCREW-2      | 79         | BALL BEARING-2                   |            |                                |

### MAINTENANCE AND CARE

When applying lubricant to your Speed Spool reel, avoid using multi-purpose oil. Use lightweight oils or greases made for fishing reels. Apply oil to all bearings, the crankshaft and the worm gear. Apply grease to the bushings, pinion gears, drive gears, and crank gears.

After usage, your reel should be inspected for dirt or sand and cleaned if excessive build-up is present. If your reel has come in contact with saltwater it is important to flush all parts with water, dry and re-lubricate your reel. Through diligent cleaning and maintenance your Lew's reel will provide you with years of reliability and sound performance.

To remove palming sideplate pull locking pin (63) away from reel body.

