



TOURNAMENT MP SPEED SPOOL® LFS

TS1SMP, TS1HMP, TS1SHMP,
TS1XHMP



Reel Specifications

Model	Weight (oz.)	Line Capacity (yds./lbs.)	Gear Ratio	RPT* (in.)
TS1SMP	7	140/12	5.6:1	23"
TS1HMP	6.9	120/12	6.8:1	28"
TS1SHMP	6.9	120/12	7.5:1	31"
TS1SXHMP	6.9	120/12	8.3:1	35"

*Rotation per turn

FEATURES:

- One-piece, aluminum frame with graphite sideplates
- Premium 10-bearing system with stainless steel double shielded bearings and Zero Reverse® one-way clutch
- Hard anodized aluminum Speed Gears®, cut on precision Hamai CNC gear hobbing machines
- P2 Super Pinion bearing supported pinion gear provides precise alignment and solid stability
- Externally-adjustable Multi-Setting Brake (MSB) dual cast control system utilizing both an external click-dial for setting the magnetic brake, plus 4 individually disengaging, disk-mounted internal brake shoes that operate on centrifugal force
- Double anodized aluminum spool tension adjustment with audible click
- Rugged carbon fiber drag system provides up to 20lbs. of drag power
- Audible click, bowed, double anodized aluminum star drag
- Bowed, lightweight, 95MM aluminum reel handle with Lew's® Combat Grip® paddle knobs
- Combat Grip thumb bar
- Speed Keeper® hook keeper

Performance — Right out of the Box!

Speed Spool LFS Baitcast reels are designed to be Lighter, Faster, and Stronger.

Your Speed Spool® LFS reel is designed to be Lighter, Faster and Stronger. From the way it conforms to your hand, to the way it reacts crisply and effortlessly to your command, you'll know the minute you grab onto your Speed Spool® LFS that you've got a quality reel. Your Speed Spool LFS reel exploits several new developments which will allow you to set yourself apart from the competition.

One-piece Aluminum Frame Your Speed Spool® reel utilizes a one-piece all aluminum frame so that you'll never have to worry about frame torque or twisting.

Machine Forged Double Anodized Aluminum Spool The machine forged double anodized aluminum spool of your Speed Spool reel is engineered for deep capacity and double anodized for superior oxidation and abrasion resistance.



Speed Gears Lew's Speed Gears® are cut on precision Hamai CNC gear hobbing machines resulting in an efficient drive train with less gear feel.



Speed Keeper Patented Speed Keeper® hook keeper gives convenience a whole new meaning. Swing it out and secure your hook, swing it back and it conveniently tucks back under the reel when not in use.



P2 Bearing The P2 bearing supported pinion maintains precise alignment with the drive gear for improved gear lie. The result is smooth crank power even when under load. An added benefit is reduced friction with the spool shaft resulting in enhanced casting performance.



Zero Reverse Bearing The handle on your Speed Spool reel will only rotate forward for rock solid hook setting. When you release the handle, it will hold its position because of the Zero Reverse® bearing, never losing an inch on your catch; an invaluable property to have when you're pulling it in.



Multi-Setting Braking System (MSB) In order to combat backlash your Speed Spool® reel features both an externally-adjustable, full-release magnetic braking system as well as an internally adjustable centrifugal brake system. The magnetic brakes give consistent braking throughout the entire cast and are adjusted by the palming sideplate dial. The centrifugal brakes provide initial braking at the beginning of the cast to reduce backlash and can be turned off to reduce braking by removing the palming sideplate and pushing the white pin(s) towards the center of the spool until they click. To turn them back on push the white pin(s) away from the center of the spool until they click.

Bowed 95 mm Aluminum Handle Our 95mm bowed aluminum handle will give you all the cranking power you need. The Lew's Combat Grip® knobs are an added bonus known for a comfortable grip for all day fishing.

Driven by innovation — Fueled with Passion Feel the Difference!

ATTENTION BRAIDED LINE USERS!

If your Lew's Baitcast reel has pre-drilled holes in the spool, you may tie your braid directly to the spool, by passing the braid thru the provided holes and tying a uni-knot.

If your Lew's baitcast reel does not have pre-drilled holes in the spool, you will need to first tie on and spool at least 20 revolutions of monofilament line, and then tie your braided line to the monofilament line, with either a back-to-back uni-knot or an Albright knot.

Continue to spool your reel as normal, keeping strong tension on the line to ensure the line is firmly wound onto the spool to keep from "digging in" to underlying line layers when pressure is put on the line from fighting fish.

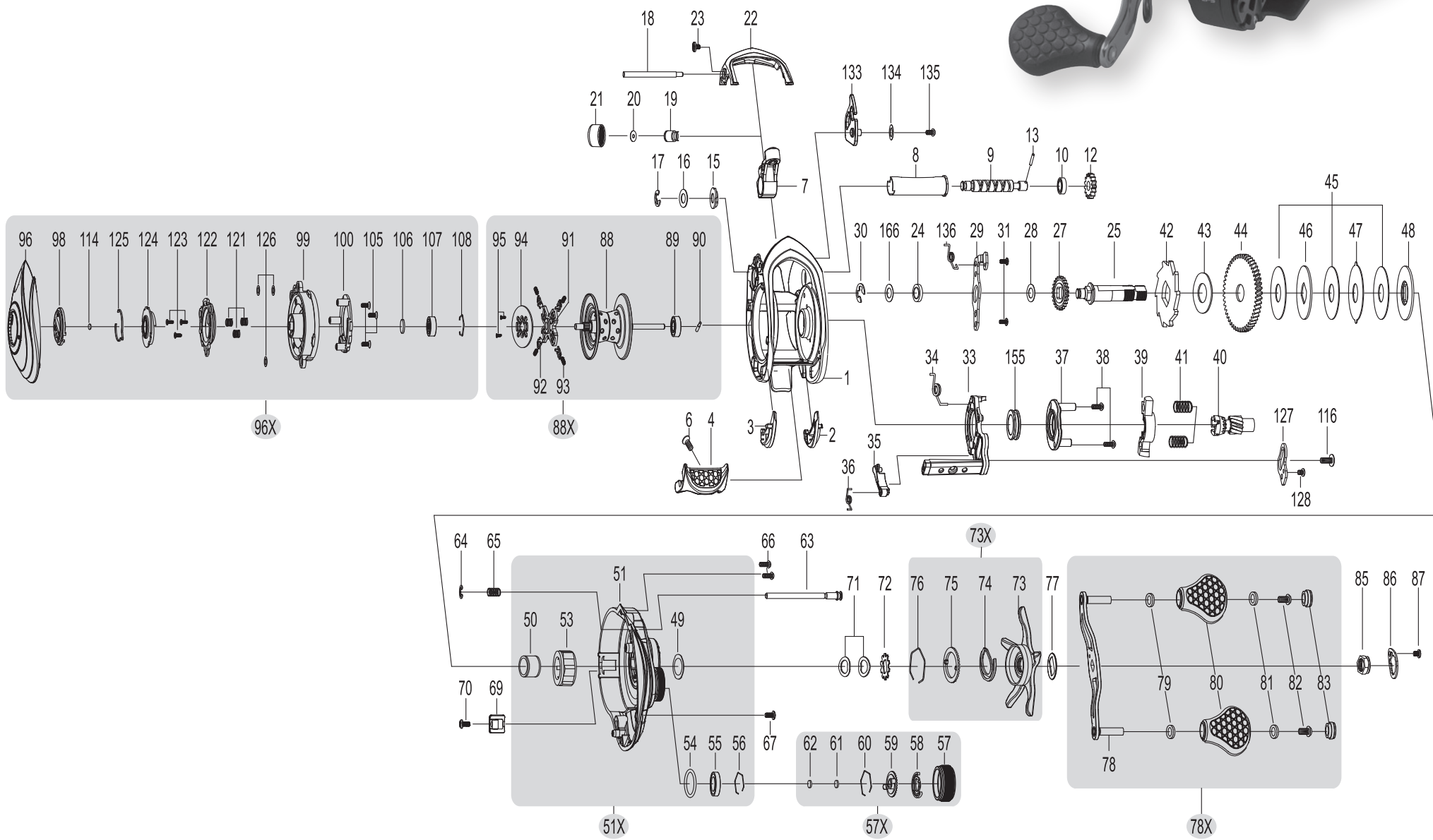
FAILURE TO PROPERLY SPOOL BRAIDED LINE ONTO YOUR REELS SPOOL WILL RESULT IN LINE SLIPPAGE, AND THE IMPRESSION YOUR DRAG IS NOT WORKING PROPERLY.



TOURNAMENT MP

SPEED SPOOL® LFS

TS1SMP, TS1HMP, TS1SHMP,
TS1XHMP



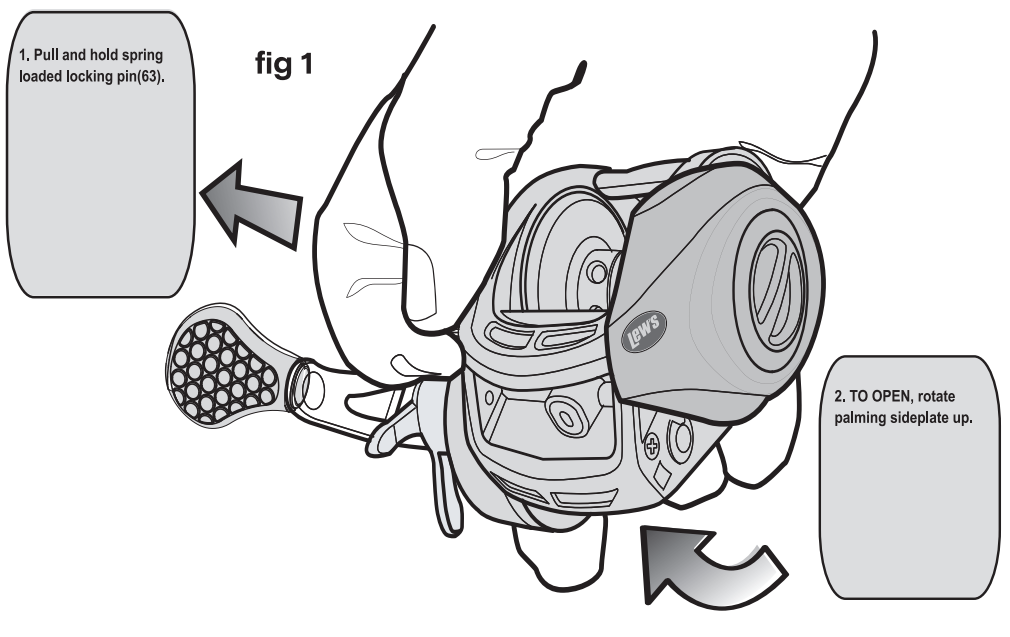
KEY #	PART NAME	KEY #	PART NAME	KEY #	PART NAME	
1	FRAME	47	DRAG WASHER-A	87	HANDLE NUT RETAINER SCREW	
2	CLUTCH BAR PLATE-R	48	DRAG WASHER-D2	88	SPOOL	
3	CLUTCH BAR PLATE-L	49	SLEEVE WASHER	88X	SPOOL ASSEMBLY	
4	CLUTCH BAR	50	SLEEVE	89	BALL BEARING	
6	CLUTCH BAR SCREW	51	GEAR SIDEPLATE	90	PIN	
7	LEVELWIND ASSEMBLY	51X GEAR SIDEPLATE ASSEMBLY			91	BRAKE HOLDER
8	PIPE	53	ONE-WAY CLUTCH	92	BRAKE SHOE	
9	WORM SHAFT	54	O-RING	93	BRAKE SHOE SPRING	
10	BALL BEARING	55	BALL BEARING	94	MAGNET PLATE	
12	IDLER(S)	56	BEARING RETAINER	95	SCREW	
13	WORM SHAFT PIN	57	CAST CONTROL CAP	96	PALM SIDEPLATE	
15	WORM SHAFT BUSHING (B)	57X CAST CONTROL CAP ASSEMBLY			96X	PALM SIDEPLATE ASSEMBLY
16	WORM SHAFT WASHER	58	CLICKER	98	CONTROL DIAL	
17	E-RING	59	CLICKER PLATE	99	SPOOL COVER	
18	PILLAR	60	CLICK PLATE RETAINER	100	MAGNET HOLDER	
19	LEVELWIND PIN	61	TENSION WASHER	105	SPOOL COVER SCREW-3	
20	SPACER (OPTIONAL)	62	SPOOL SPACER-B	106	SPOOL SPACER-A	
21	LEVELWIND NUT	63	LOCKING PIN	107	BALL BEARING	
22	FRONT COVER	64	E-RING	108	BEARING RETAINER	
23	FRONT COVER SCREW-2	65	LOCKING PIN SPRING	114	WASHER	
24	BALL BEARING	66	GEAR SIDEPLATE SCREW-A	116	CAM PLATE SCREW-B	
25	CRANKSHAFT	67	GEAR SIDEPLATE SCREW-B	121	SLIDE CAM SPRING	
27	IDLER-L	69	LUBE PORT CAP	122	SLIDE CAM-H	
28	IDLER-L WASH-B	70	LUBE PORT CAP SCREW	123	SLIDE CAM SCREW	
29	BEARING PLATE	71	DRAG SPRING WASHER-2	124	SLIDE CAM-D	
30	E-RING	72	CLICK HOLDER	125	CLICK SPRING	
31	BEARING PLATE SCREW-2	73	STAR DRAG	126	SPOOL COVER SPACER (OPT)	
33	CLUTCH CAM	73X STAR DRAG ASSEMBLY			127	LINK PLATE
34	CLUTCH SPRING	74	CLICKER	128	LINK PLATE SCREW	
35	KICK LEVER	75	CLICK PLATE	133	SPEED KEEPER	
36	KICK LEVER SPRING	76	CLICK PLATE RETAINER	134	SPEED KEEPER WASHER (OPTIONAL)	
37	CAM PLATE	77	HANDLE WASHER	135	SPEED KEEPER SCREW	
38	CLUTCH CAM SCREW-2	78	HANDLE	136	SPEED KEEPER SPRING	
39	PINION YOKE	78X HANDLE ASSEMBLY			155	BUSHING
40	PINION GEAR	79	BALL BEARING-2	166	WASHER	
41	PINION YOKE SPRING (2)	80	HANDLE KNOB-2			
42	RATCHET	81	BALL BEARING-2			
43	RATCHET WASHER	82	HANDLE KNOB SCREW-2			
44	DRIVE GEAR	83	HANDLE KNOB CAP-2			
45	DRAG WASHER-L	85	HANDLE NUT			
46	DRAG WASHER-D1	86	HANDLE NUT RETAINER			

MAINTENANCE AND CARE

When applying lubricant to your Speed Spool reel, avoid using multi-purpose oil. Use lightweight oils or greases made for fishing reels. Apply oil to all bearings, the crankshaft and the worm gear. Apply grease to the bushings, pinion gears, drive gears, and crank gears.

After usage, your reel should be inspected for dirt or sand and cleaned if excessive build-up is present. If your reel has come in contact with saltwater it is important to flush all parts with water, dry and re-lubricate your reel. Through diligent cleaning and maintenance your Lew's reel will provide you with years of reliability and sound performance.

To remove palming sideplate pull locking pin (63) away from reel body.





TOURNAMENT MP SPEED SPOOL® LFS

TS1HMPL, TS1SHMPL,
TS1SXMPL

Left Hand / Gaucher
Mano izquierda



Reel Specifications

Model	Weight (oz.)	Line Capacity (yds./lbs.)	Gear Ratio	RPT* (in.)
TS1HMPL	6.9	120/12	6.8:1	28"
TS1SHMPL	6.9	120/12	7.5:1	31"
TS1SXMPL	6.9	120/12	8.3:1	35"

*Rotation per turn

FEATURES:

- One-piece, aluminum frame with graphite sideplates
- Premium 10-bearing system with stainless steel double shielded bearings and Zero Reverse® one-way clutch
- Hard anodized aluminum Speed Gears®, cut on precision Hamai CNC gear hobbing machines
- P2 Super Pinion bearing supported pinion gear provides precise alignment and solid stability
- Externally-adjustable Multi-Setting Brake (MSB) dual cast control system utilizing both an external click-dial for setting the magnetic brake, plus 4 individually disengaging, disk-mounted internal brake shoes that operate on centrifugal force
- Double anodized aluminum spool tension adjustment with audible click
- Rugged carbon fiber drag system provides up to 20lbs. of drag power
- Audible click, bowed, double anodized aluminum star drag
- Bowed, lightweight, 95MM aluminum reel handle with Lew's® Combat Grip® paddle knobs
- Combat Grip thumb bar
- Speed Keeper® hook keeper

Performance — Right out of the Box!

Speed Spool LFS Baitcast reels are designed to be Lighter, Faster, and Stronger.

Your Speed Spool® LFS reel is designed to be Lighter, Faster and Stronger. From the way it conforms to your hand, to the way it reacts crisply and effortlessly to your command, you'll know the minute you grab onto your Speed Spool® LFS that you've got a quality reel. Your Speed Spool LFS reel exploits several new developments which will allow you to set yourself apart from the competition.

One-piece Aluminum Frame Your Speed Spool® reel utilizes a one-piece all aluminum frame so that you'll never have to worry about frame torque or twisting.

Machine Forged Double Anodized Aluminum Spool The machine forged double anodized aluminum spool of your Speed Spool reel is engineered for deep capacity and double anodized for superior oxidation and abrasion resistance.



Speed Gears Lew's Speed Gears® are cut on precision Hamai CNC gear hobbing machines resulting in an efficient drive train with less gear feel.



Speed Keeper Patented Speed Keeper® hook keeper gives convenience a whole new meaning. Swing it out and secure your hook, swing it back and it conveniently tucks back under the reel when not in use.



P2 Bearing The P2 bearing supported pinion maintains precise alignment with the drive gear for improved gear lie. The result is smooth crank power even when under load. An added benefit is reduced friction with the spool shaft resulting in enhanced casting performance.



Zero Reverse Bearing The handle on your Speed Spool reel will only rotate forward for rock solid hook setting. When you release the handle, it will hold its position because of the Zero Reverse® bearing, never losing an inch on your catch; an invaluable property to have when you're pulling it in.



Multi-Setting Braking System (MSB) In order to combat backlash your Speed Spool® reel features both an externally-adjustable, full-release magnetic braking system as well as an internally adjustable centrifugal brake system. The magnetic brakes give consistent braking throughout the entire cast and are adjusted by the palming sideplate dial. The centrifugal brakes provide initial braking at the beginning of the cast to reduce backlash and can be turned off to reduce braking by removing the palming sideplate and pushing the white pin(s) towards the center of the spool until they click. To turn them back on push the white pin(s) away from the center of the spool until they click.

Bowed 95 mm Aluminum Handle Our 95mm bowed aluminum handle will give you all the cranking power you need. The Lew's Combat Grip® knobs are an added bonus known for a comfortable grip for all day fishing.

Driven by innovation — Fueled with Passion Feel the Difference!

ATTENTION BRAIDED LINE USERS!

If your Lew's Baitcast reel has pre-drilled holes in the spool, you may tie your braid directly to the spool, by passing the braid thru the provided holes and tying a uni-knot.

If your Lew's baitcast reel does not have pre-drilled holes in the spool, you will need to first tie on and spool at least 20 revolutions of monofilament line, and then tie your braided line to the monofilament line, with either a back-to-back uni-knot or an Albright knot.

Continue to spool your reel as normal, keeping strong tension on the line to ensure the line is firmly wound onto the spool to keep from "digging in" to underlying line layers when pressure is put on the line from fighting fish.

FAILURE TO PROPERLY SPOOL BRAIDED LINE ONTO YOUR REELS SPOOL WILL RESULT IN LINE SLIPPAGE, AND THE IMPRESSION YOUR DRAG IS NOT WORKING PROPERLY.

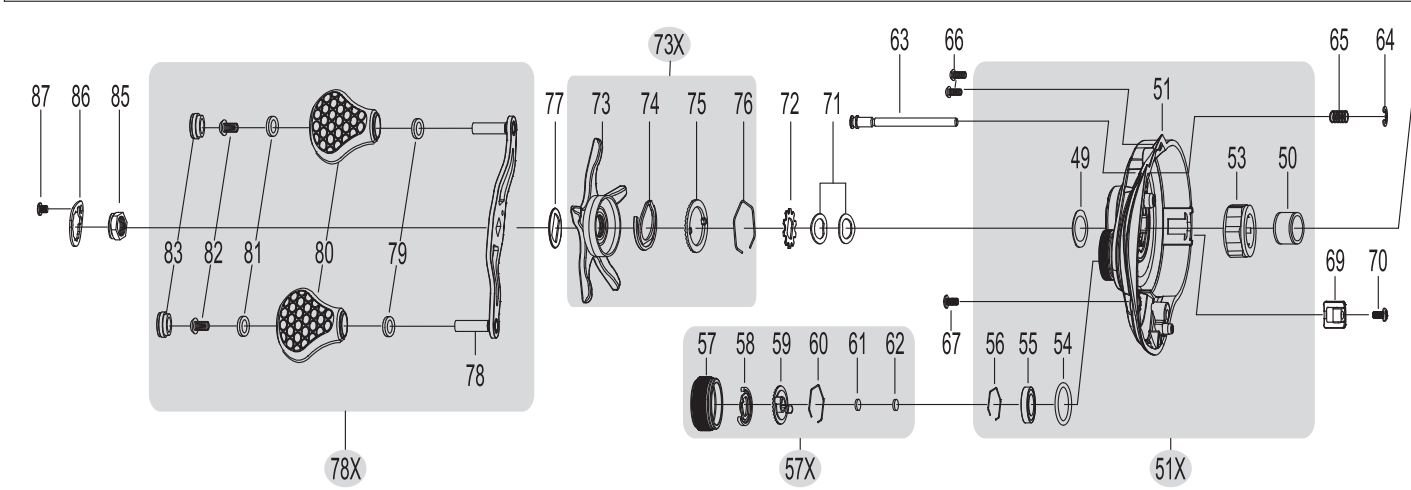
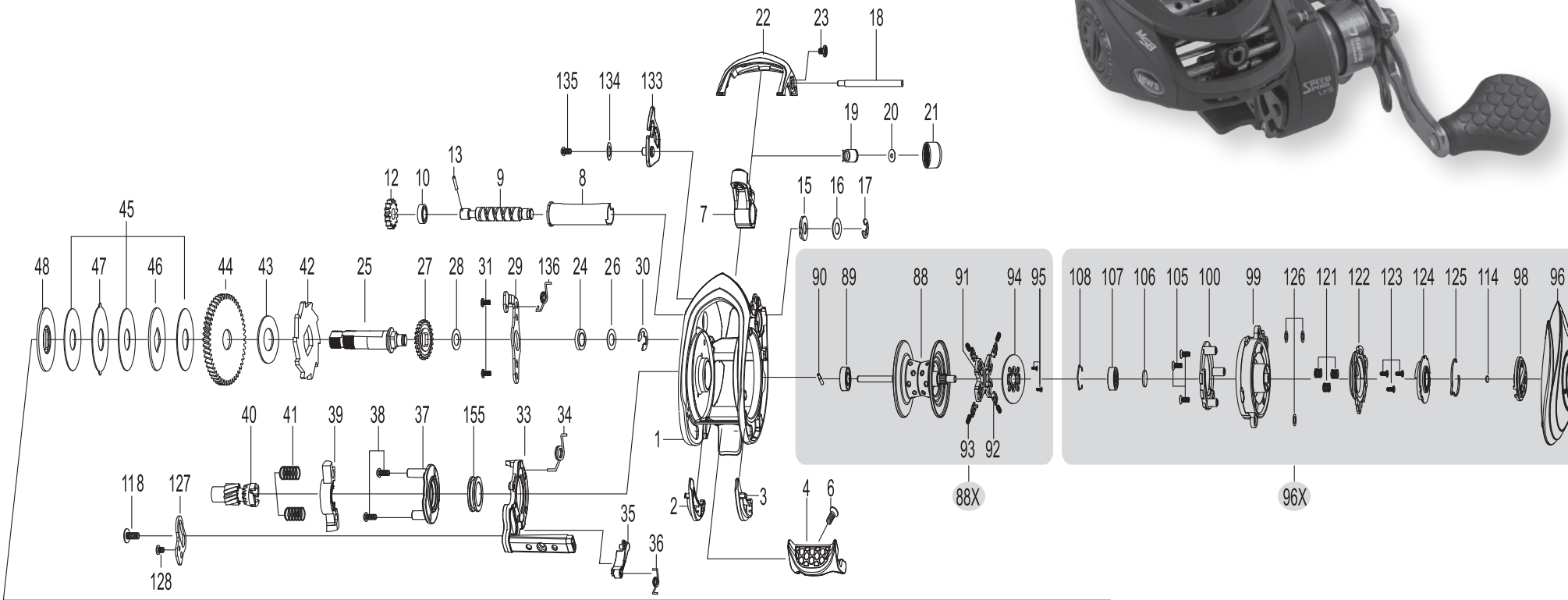


TOURNAMENT MP

SPEED SPOOL® LFS

TS1HMPL, TS1SHMPL, TS1SXMP

Left Hand



KEY #	PART NAME	KEY #	PART NAME	KEY #	PART NAME
1	FRAME	47	DRAG WASHER-A	87	HANDLE NUT RETAINER SCREW
2	CLUTCH BAR PLATE-R	48	DRAG WASHER-D2	88	SPOOL
3	CLUTCH BAR PLATE-L	49	SLEEVE WASHER	88X	SPOOL ASSEMBLY
4	CLUTCH BAR	50	SLEEVE	89	BALL BEARING
6	CLUTCH BAR SCREW	51	GEAR SIDEPLATE	90	PIN
7	LEVELWIND ASSEMBLY	51X	GEAR SIDEPLATE ASSEMBLY	91	BRAKE HOLDER
8	PIPE	53	ONE-WAY CLUTCH	92	BRAKE SHOE
9	WORM SHAFT	54	O-RING	93	BRAKE SHOE SPRING
10	BALL BEARING	55	BALL BEARING	94	MAGNET PLATE
12	IDLER(S)	56	BEARING RETAINER	95	SCREW
13	WORM SHAFT PIN	57	CAST CONTROL CAP	96	PALM SIDEPLATE
15	WORM SHAFT BUSHING (B)	57X	CAST CONTROL CAP ASSEMBLY	96X	PALM SIDEPLATE ASSEMBLY
16	WORM SHAFT WASHER	58	CLICKER	98	CONTROL DIAL
17	E-RING	59	CLICK PLATE	99	SPOOL COVER
18	PILLAR	60	CLICK PLATE RETAINER	100	MAGNET HOLDER
19	LEVELWIND PIN	61	TENSION WASHER	105	SPOOL COVER SCREW-3
20	SPACER (OPTIONAL)	62	SPOOL SPACER-B	106	SPOOL SPACER-A
21	LEVELWIND NUT	63	LOCKING PIN	107	BALL BEARING
22	FRONT COVER	64	E-RING	108	BEARING RETAINER
23	FRONT COVER SCREW-2	65	LOCKING PIN SPRING	114	WASHER
24	BALL BEARING	66	GEAR SIDEPLATE SCREW-A	116	CAM PLATE SCREW-B
25	CRANKSHAFT	67	GEAR SIDEPLATE SCREW-B	121	SLIDE CAM SPRING
27	IDLER-L	69	LUBE PORT CAP	122	SLIDE CAM-H
28	IDLER-L WASH-B	70	LUBE PORT CAP SCREW	123	SLIDE CAM SCREW
29	BEARING PLATE	71	DRAG SPRING WASHER-2	124	SLIDE CAM-D
30	E-RING	72	CLICK HOLDER	125	CLICK SPRING
31	BEARING PLATE SCREW-2	73	STAR DRAG	126	SPOOL COVER SPACER (OPT)
33	CLUTCH CAM	73X	STAR DRAG ASSEMBLY	127	LINK PLATE
34	CLUTCH SPRING	74	CLICKER	128	LINK PLATE SCREW
35	KICK LEVER	75	CLICK PLATE	133	SPEED KEEPER
36	KICK LEVER SPRING	76	CLICK PLATE RETAINER	134	SPEED KEEPER WASHER (OPTIONAL)
37	CAM PLATE	77	HANDLE WASHER	135	SPEED KEEPER SCREW
38	CLUTCH CAM SCREW-2	78	HANDLE	136	SPEED KEEPER SPRING
39	PINION YOKE	78X	HANDLE ASSEMBLY	155	BUSHING
40	PINION GEAR	79	BALL BEARING-2	166	WASHER
41	PINION YOKE SPRING (2)	80	HANDLE KNOB-2		
42	RATCHET	81	BALL BEARING-2		
43	RATCHET WASHER	82	HANDLE KNOB SCREW-2		
44	DRIVE GEAR	83	HANDLE KNOB CAP-2		
45	DRAG WASHER-L	85	HANDLE NUT		
46	DRAG WASHER-D1	86	HANDLE NUT RETAINER		

MAINTENANCE AND CARE

When applying lubricant to your Speed Spool reel, avoid using multi-purpose oil. Use lightweight oils or greases made for fishing reels. Apply oil to all bearings, the crankshaft and the worm gear. Apply grease to the bushings, pinion gears, drive gears, and crank gears.

After usage, your reel should be inspected for dirt or sand and cleaned if excessive build-up is present. If your reel has come in contact with saltwater it is important to flush all parts with water, dry and re-lubricate your reel. Through diligent cleaning and maintenance your Lew's reel will provide you with years of reliability and sound performance.

To remove palming sideplate pull locking pin (63) away from reel body.

fig 1

