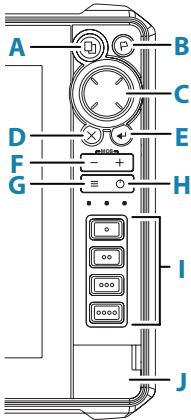


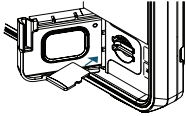
Keys



A	Pages	<ul style="list-style-type: none"> • Press to activate the home page • Repeat short presses to cycle the favorite buttons
B	Waypoint	<ul style="list-style-type: none"> • Press to open the new waypoint dialog • Press twice to save a waypoint • Press and hold to access the find dialog
C	Arrows	<ul style="list-style-type: none"> • Press to position the cursor on the image • Press to pan the image in any direction • Press to navigate menus
D	Exit	<p>Press to clear the cursor or restore the cursor on the chart panel</p> <p>In menus and dialogs:</p> <ul style="list-style-type: none"> • press to return to previous menu level and to exit a dialog
E	Enter	<p>In menus and dialogs:</p> <ul style="list-style-type: none"> • press to confirm a selection
F	Zoom in/out	<ul style="list-style-type: none"> • Press to zoom the image • Simultaneous press both keys to save a Man Overboard (MOB) waypoint at the current vessel position
G	Menu	<ul style="list-style-type: none"> • Press to display the menu • Press twice to access the settings menu • Press and hold to hide the panel menu
H	Power	<ul style="list-style-type: none"> • Press to turn the unit ON • Press and hold to turn the unit OFF • When ON press once to display the system controls dialog <ul style="list-style-type: none"> - Repeat short presses to cycle the backlight brightness
I	Quick access*	<ul style="list-style-type: none"> • Use the configurable keys option in the system settings dialog to configure the keys
J	Card reader door	

*Not available for 7" and 9" units

Card reader



- To insert, carefully slide the card into the slot until it clicks into place
- To remove, carefully push in the card until it clicks out of place

System controls dialog

Used for quick access to system settings.

To activate:

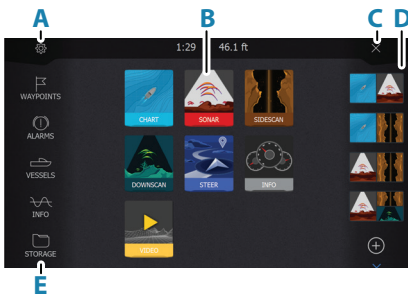
- press the power key

→ **Note:** The content of the system controls dialog depends on connected equipment and active panel.



Home page

Activate the home page by pressing the pages key.



- A. Settings button
- B. Application buttons
- C. Close button
- D. Favorites
- E. Toolbar buttons

Application pages

To activate an application page:

- tap the application button (full page panel)
- tap a favorites button
- press and hold an application button to select a predefined quick split page

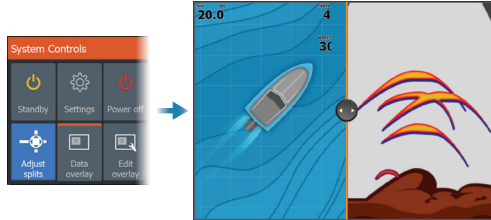


- A. Control bar
- B. Application panel
- C. Menu

Adjust panel size

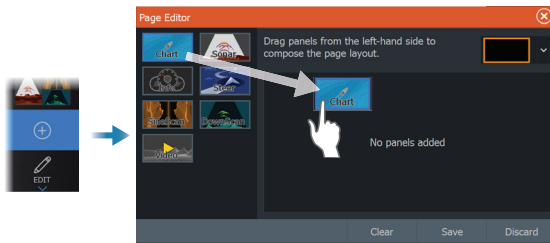
To adjust the panel sizes in a quick split page or favorite pages:

1. Tap the adjust splits button in the System Control dialog to show the resize icon
2. Drag the resize icon to set preferred panel size
3. Save the changes by pressing the enter key, or select the save button

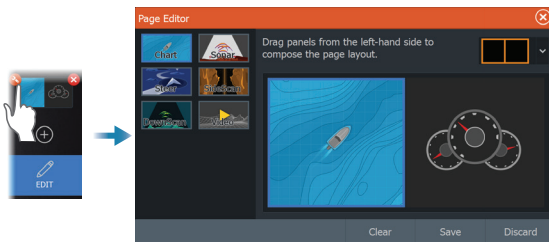


Favorite pages

Add a favorite page



Edit a favorite page

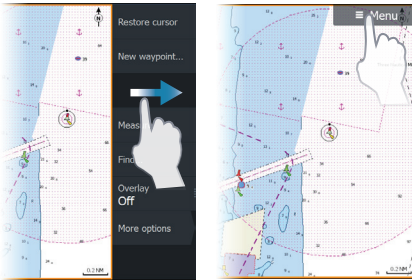


 Edit favorite page

 Delete favorite page

Menus

The panel menu



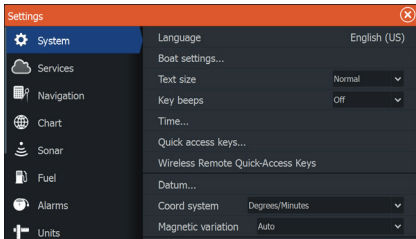
To hide the panel menu:

- swipe the menu to the right
- press and hold the menu key

To restore the panel menu:

- press the menu button
- press the menu key

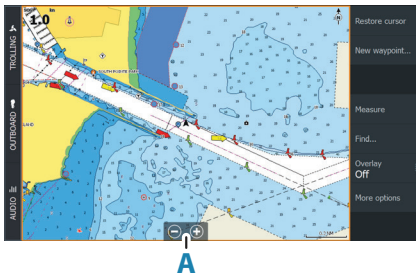
Settings menu



To activate the settings dialog:

- press the menu key twice
- select the settings button in the system controls dialog
- select the settings button on the home page

Chart



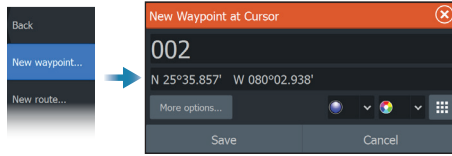
To navigate the chart panel:

- zoom the chart by using spread or pinch gestures, by using the zoom buttons (A), or by using the + or - buttons on the keypad
- move the view in any direction by panning the chart
- display information about a chart item by tapping the item

Waypoints

To create a new waypoint:

- select the new waypoint option in the menu



→ **Note:** With cursor inactive, the waypoint will be placed at vessel's position. With cursor active, the waypoint will be placed at selected cursor position.

Routes

To create a route:

1. Activate the cursor on the chart panel
2. Select the new route option in the menu
3. Tap the chart to position the first route point
4. Repeat point 3 to position additional route points
5. Save the route by selecting the save option from the menu

Navigating

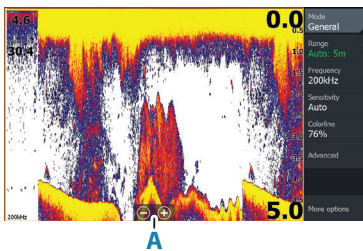
To navigate to cursor position:

- position the cursor at the selected destination on the panel, then select the go to option in the menu

To navigate a route:

- tap the route to make it active, then select the start route option in the menu
- select the route from the routes dialog, then select the start option in the dialog

Sonar

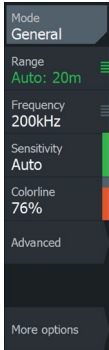


To navigate the sonar image:

- zoom the image by tapping the zoom buttons (A), or by using the + or - buttons on the keypad
- view sonar history by panning the image
- adjust sensitivity and colorline from the panel menu
- toggle available sonar frequencies from the menu

Setting up the image

Use the sonar menu options to set up the image.

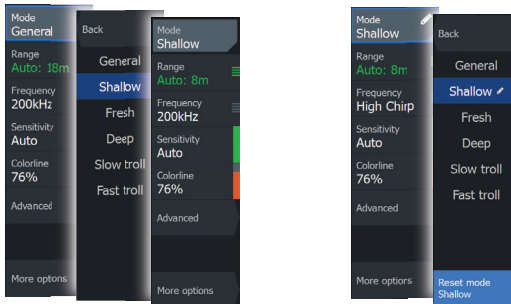


- The range settings determines which water depth that is visible on the screen
- The unit supports several transducer frequencies. Available options depend on type of transducers connected to the system.
- Increasing sensitivity shows more detail on the screen. Decreasing sensitivity displays less. Auto sensitivity automatically adjusts the sonar return to the optimal levels
- Colorline adjust the colors of the display to help differentiate softer targets from harder ones

➔ **Note:** When the cursor is active, some options on the sonar menu are replaced with cursor mode features. Select clear cursor to return to the normal sonar menu.

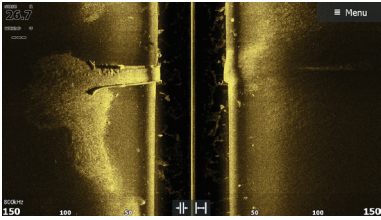
Fishing mode

Used to select predefined sonar settings designed for specific fishing conditions.

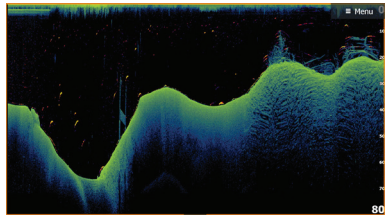


➔ **Note:** Use shallow water fishing mode when fishing in less than 18 meter (60 feet) of water.

SideScan and DownScan



SideScan

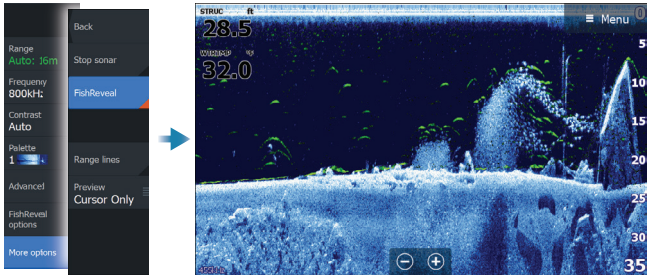


DownScan

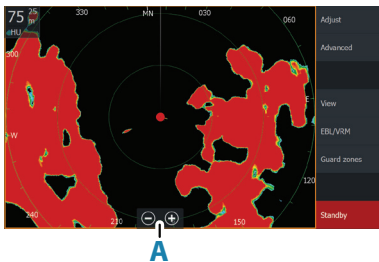
- Zoom the image by using the zoom keys
- View sonar history by using the arrow keys

Fish reveal

Select FishReveal to display fish arches in the DownScan image.



Radar



- Turn the radar transmitting on/off from the menu
- Set the range by using the zoom icons, or by using + or - buttons on the keypad (A)
- Adjust gain, sea clutter and rain clutter settings from the adjust menu