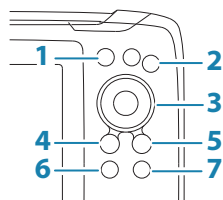


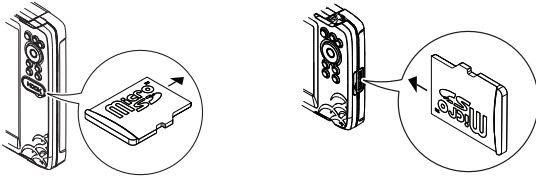
# LOWRANCE Hook Reveal Quick Guide

## Front controls



<b>1</b>	<b>Pages</b>	<ul style="list-style-type: none"> <li>Press to activate the Home page.</li> </ul>
<b>2</b>	<b>Zoom in/out</b>	<ul style="list-style-type: none"> <li>Press to zoom the image.</li> <li>Press both keys simultaneous to create a MOB (Man Over Board) waypoint at the vessel's position.</li> </ul>
<b>3</b>	<b>Arrows</b>	<p>On any full screen page:</p> <ul style="list-style-type: none"> <li>Press to position the cursor on the image.</li> <li>Press to pan the image in any direction.</li> </ul> <p>On multi-panel pages:</p> <ul style="list-style-type: none"> <li>Press to select panel.</li> </ul> <p>In menus and dialogs:</p> <ul style="list-style-type: none"> <li>Press to highlight an option.</li> </ul>
<b>4</b>	<b>Exit (X)</b>	<p>On a maximized multi-panel page:</p> <ul style="list-style-type: none"> <li>Press to return to the multi-panel page.</li> </ul> <p>In menus and dialogs:</p> <ul style="list-style-type: none"> <li>Press to return to previous menu level and to exit a dialog.</li> </ul>
<b>5</b>	<b>Menu/Enter</b>	<p>On any full screen page with no menu or dialog active:</p> <ul style="list-style-type: none"> <li>Press to display the menu.</li> </ul> <p>On multi-panel pages:</p> <ul style="list-style-type: none"> <li>Press to maximize the current selected panel.</li> </ul> <p>In menus and dialogs:</p> <ul style="list-style-type: none"> <li>Press to confirm a selection.</li> </ul>
<b>6</b>	<b>Cursor/ Waypoint</b>	<ul style="list-style-type: none"> <li>Press to activate/deactivate the cursor.</li> <li>Press and hold to save a waypoint.</li> </ul>
<b>7</b>	<b>Power</b>	<ul style="list-style-type: none"> <li>Press to display the System Controls dialog.</li> <li>Press and hold to power the unit on/off .</li> </ul>

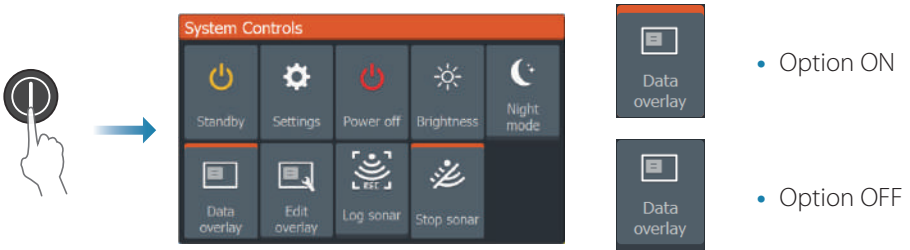
## Micro SD card



The card reader position depends on model.

## System controls dialog

Used for quick access to system settings.

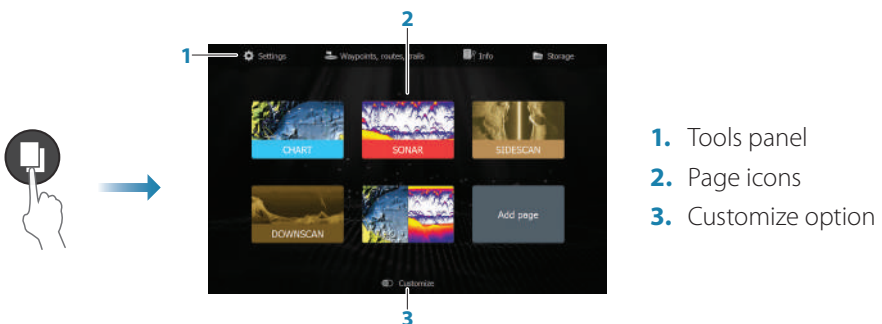


→ **Note:** The content of the System Controls dialog depends on connected equipment and active panel.

## Display illumination

- Set brightness and select day/night mode from the System Controls dialog.
- Repeat short presses on the Power key to cycle the backlight brightness.

## The Home page

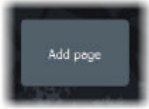


→ **Note:** Page icons on the Home page vary with model type.

## Pages

Select a page icon on the Home page to display a page.

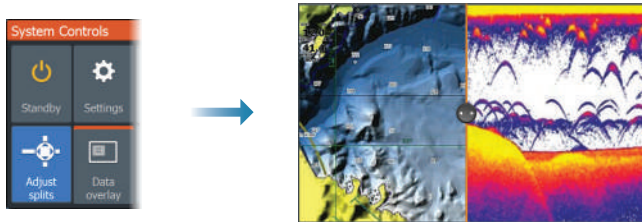
### Custom pages



- Select the **Add Page** icon to create a custom page.
- Switch **Customize** ON to edit custom pages.

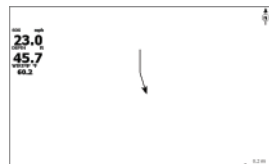
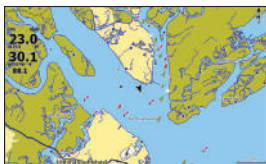
### Multi-panel pages

- With cursor not active on any panel: switch active panel by using the arrow keys. An active panel is indicated with an orange border.
- Activate the cursor by pressing the Cursor/Waypoint key, then use the arrow keys to position the cursor.
- Maximize the active panel by pressing the Menu/Enter key. Press the X key to go back to the multi-panel page.
- Adjust panel size by selecting **Adjust** in the System controls dialog, then use the arrow keys to set preferred panel size. Confirm the layout by pressing the Menu/Enter key.



→ **Note:** You must maximize a panel in a multi-panel page to use the panel menu.

## Charts and GPS plotter pages



*Chart page (only available for Hook Series models)*

*GPS Plotter page (only available for Hook X Series models)*

- Zoom the image by using the Zoom keys.
- Pan the image in any direction by using the arrow keys.
- Display item information by positioning the cursor on an item and then pressing the Menu/Enter key.

## Create a route

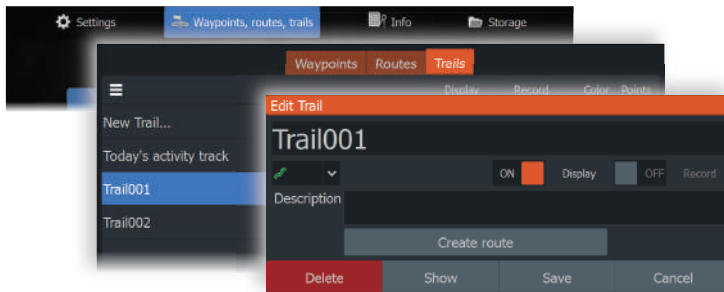
1. Activate a full screen page or maximize the panel on a multi-panel page
2. Press the Menu/Enter key to activate the menu, then select the **New route** option in the menu
3. Press the arrow keys to position the first route point, then press Menu/Enter key to confirm the position
4. Repeat step 3 to position additional route points
5. Press the X key to save the route

## Trails

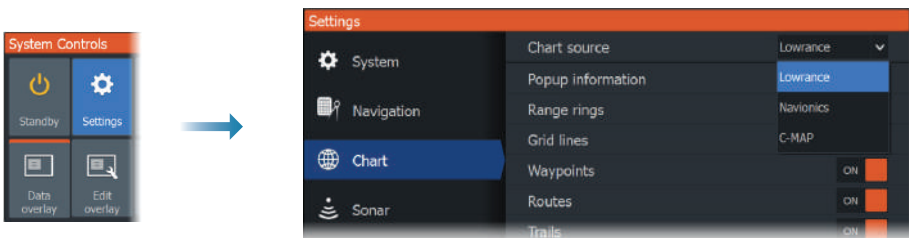
The system automatically tracks and draws the vessel's movement on the chart/GPS Plotter panel. Trails are managed from the Trails dialog.

To display the trails dialog:

1. Select **Waypoints, Routes, Trails** from the Home page
2. Select the **Trails** tab in the dialog
3. Select the trail you want to edit

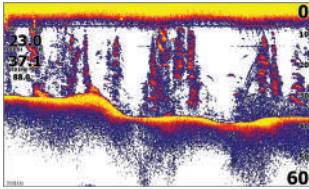


## Change chart source if card is inserted

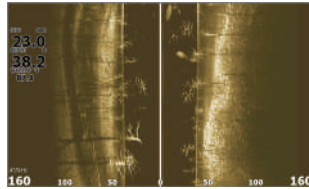


## Sonar, SideScan and DownScan

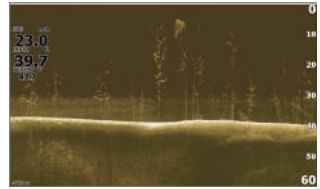
→ **Note:** Available options depend on installed transducer. SideScan is only available on TripleShot models with a SideScan capable transducer connected.



*Sonar*



*SideScan*

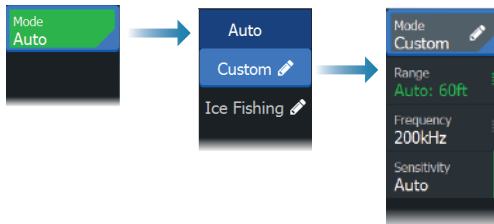


*DownScan*

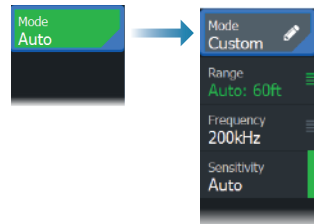
- Zoom the image by using the Zoom keys.
- Use the arrow keys to view the sonar history.

By default the unit is set to **Auto** mode, and all settings are automated.

- Change to **Custom** mode to allow for customizing the settings.



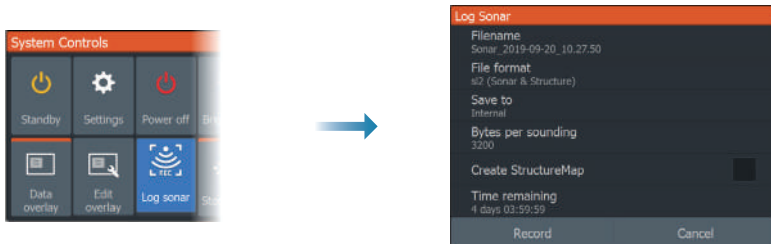
*Sonar*



*SideScan and DownScan*

## Logging sonar data

Sonar data can be logged and saved to internal memory or to a memory card.



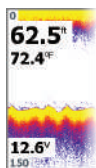
## Create a waypoint

Press and hold the Cursor/Waypoint key to save a new waypoint.

- With cursor inactive, the waypoint is placed at the vessel's position.
- With cursor active, the waypoint is placed at the cursor position.

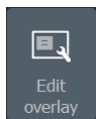


## Overlay data



The data type can be changed, and the item position on the image is selectable.

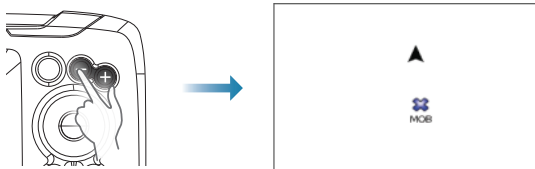
The data items can be turned on/off from the System Controls dialog. Each data item can be removed individually from the panel:



1. Select the **Edit overlay** option in the System Controls dialog to turn the unit into edit mode
2. Press the Menu/Enter key to display edit options
3. Press the X key to leave edit mode

## Create a Man Over Board (MOB) waypoint

Activate a MOB waypoint by pressing both Zoom keys simultaneously.



## Settings dialog

Used for system configuration.

