

## Technical specification

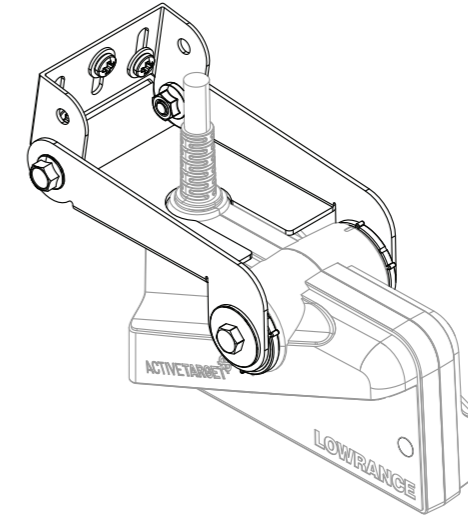
### Recommended speed during operation

Down looking orientation 6 kn (7 mph)

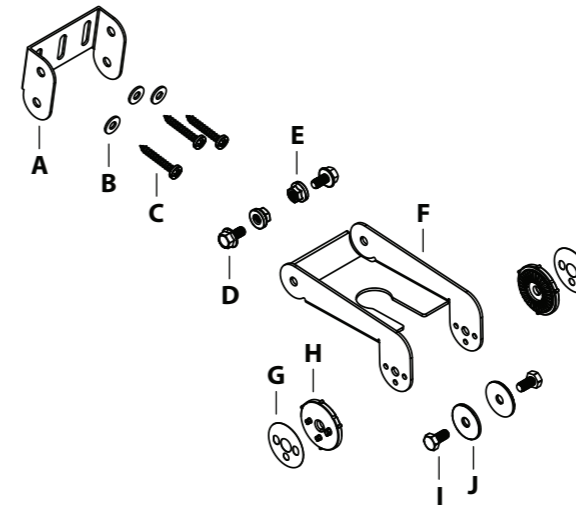
Forward looking orientation 6 kn (7 mph)

# LOWRANCE®

## ACTIVETARGET™ TRANSOM BRACKET INSTALLATION GUIDE



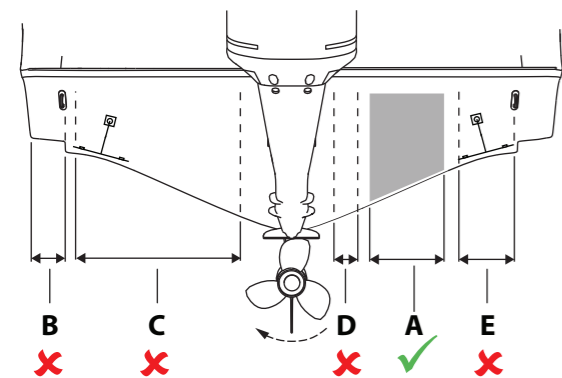
\* Transducer not included.



### PARTS INCLUDED

- A Mounting bracket
- B #10 flat washer, 3x
- C #10 self tapping screw, 3x
- D M6 hex head flange bolt, 2x
- E M6 serrated flange nut, 2x
- F Transducer bracket arm
- G Gimbal retention adhesive, 2x
- H Gimbal interface, 2x
- I M6 screw, 2x
- J M6 washer, 2x

## Mounting guidelines



Mirror the example if your boat has a counterclockwise propeller rotation.

### Best mounting location:

**A** Undisturbed water flow

### Avoid mounting:

**B** Behind planing strake

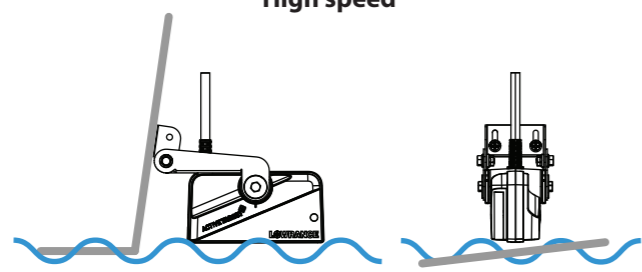
**C** 1 m (3.3') to port (left) of propeller

**D** Within 7.5 cm (3") to starboard of propeller

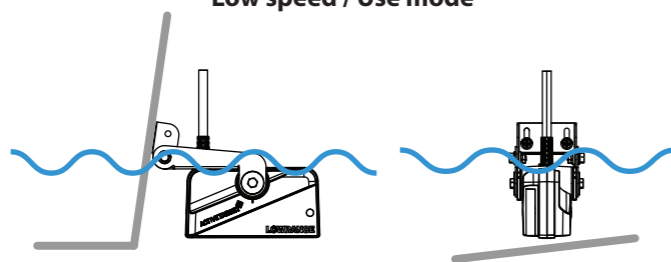
**E** Close to trim tabs

Mount the transducer so that it is fully submerged in low speeds and when in use. At high speeds the transducer should be out of the water as much as possible.

### High speed



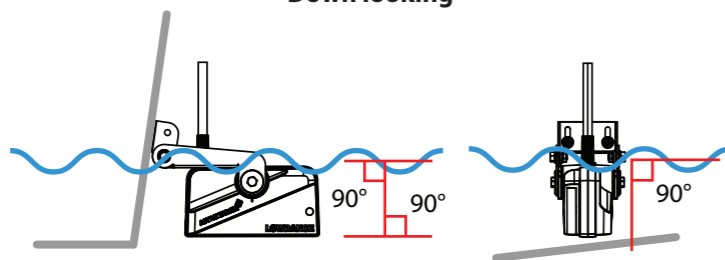
### Low speed / Use mode



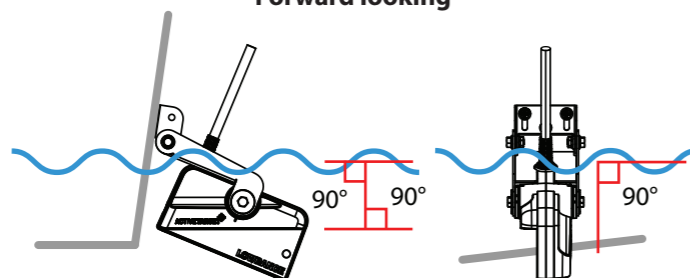
## Mounting options

The transducer can be oriented in two different ways; down looking or forward looking.

### Down looking

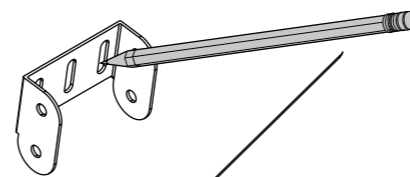


### Forward looking

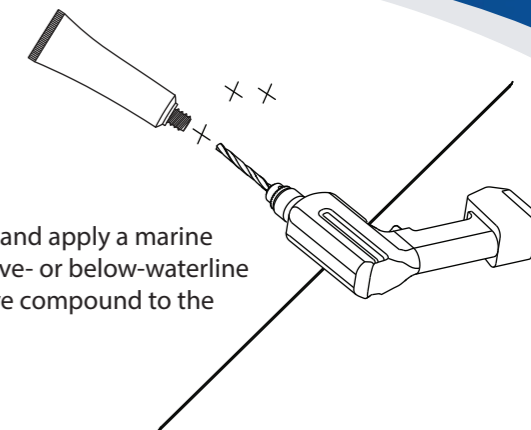


## Mounting

1

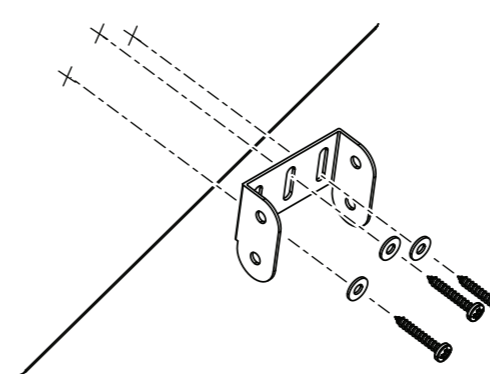


2

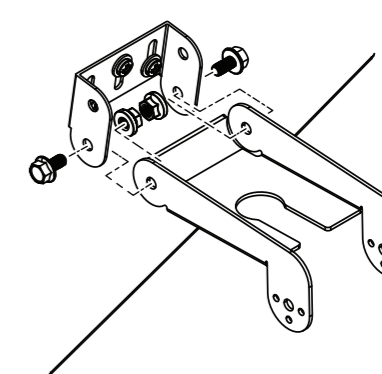


Drill pilot holes and apply a marine high-grade above- or below-waterline sealant/adhesive compound to the pilot holes.

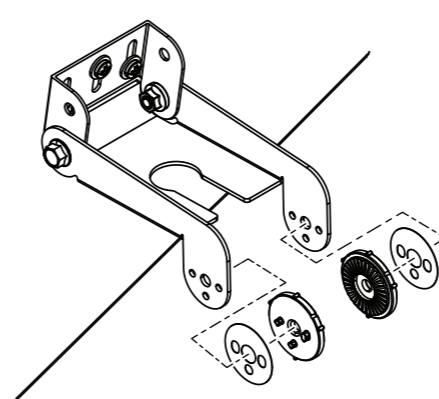
3



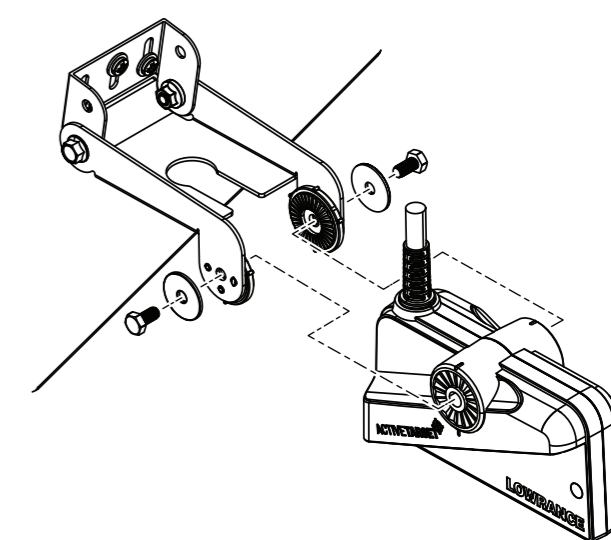
4



5



6



7

