

THE LUX LIGHTING COLLECTION

BY **LUMISHORE**



INTERIOR AND EXTERIOR ILLUMINATION

LUMISHORE



Contents

About Lumishore	2
The Lux Lighting Collection	4
CRGBW	6
Neon Flex	8
Strip Lights	10
Downlights	12
Courtesy Light	14
Livewell Light	14
Speaker Light Driver	16
Flood Lights	18
Lumi-Link Command Center	20
Flexible Display and Control Options	22

LUMISHORE





About Lumishore

A name recognised throughout the world!

Our vision started in 2008 and was simple: to offer the brightest, high-performance marine lighting systems, that innovate and exceed expectations in terms of quality and function, to create the most beautiful and personalised smart lighting effects, above and below the waterline.

Innovation is key to everything we do

It's what makes us different and keeps us pushing our boundaries and standards even further, year after year, to provide you with the most beautiful marine lighting systems.

It all starts with innovation, and with you, our customer, understanding your needs, anticipating how they may change and how we can innovate to stay ahead and exceed your expectations.

Dedication and attention to detail resonates deeply with our world class engineering experts, who ensure that we remain at the forefront of marine lighting innovation.

The premier supplier of underwater and above water marine LED lighting systems, for boats of all sizes, ranging from RIBS to the world's largest superyachts.

LUMISHORE





The Lux Lighting Collection

The first onboard smart lighting system that brings warmth and practicality to onboard lighting for yachts of all sizes.

Lumishore's marine-specific CRGBW Lux Lighting Collection uniquely combines Cold White and Warm White as well as RGB (red, green, blue) in each and every light - **an industry first**, to create a balanced unified look in any installation. Choose from a complete color palette to suit your mood and preference.



Lumishore's collection of CRGBW Downlights, Neon Flex, Strip Lights, Courtesy Lights, Flood Lights and Speaker Light Drivers are all dimmable as standard, reducing brightness to create a more intimate environment that makes dining and living spaces comfortable.

Lux is not just another lighting collection, it's a smart connected lighting system. The smart lights, smart displays and controls will forever change the way you experience light.

LUMISHORE





Industry-first CRGBW illumination

At the heart of every light in the Lux Collection is the CRGBW array.

Combining Cold White and Warm White, as well as RGB (red, green, blue), together with Lumishore's lighting control systems, allows you to create beautiful whites, premium pastel shades and vibrant hues for a more ambient on-water experience.

Why CRGBW?

Controlling the color temperature of your lights with tunable whites allows you to keep the the lighting onboard aligned with circadian rhythms. From cool white - to stimulate daylight conditions, to a warmer white that encourages relaxation, you can instantly create an environment that caters to the intended atmosphere.

Having CRGBW all in the same light unit gives a higher CRI (color rendering index), meaning that colors are not distorted and accurately show the colors of objects it illuminates. This critical aspect of marine LED interior lighting is one which only Lumishore's CRGBW LUX Lighting uniquely delivers.

The benefit of CRGBW in comparison with the industry standard RGB and RGBW is the ability to create a wider range of color blends with 'richer' color tone, delivering a truly premium on-water lighting experience.

LUMISHORE





Neon Flex Strip Light

Where standard strip lights leave visible LED dots in direct line of sight or reflecting on glossy surfaces, the cleverly designed diffusion layer of Lumishore's Lux Superbright Neon Flex Strip Light blends the CRGBW LED light to create a beautiful, homogenous, dot-free experience. Its bend-flex allows it to adjust around curved surfaces making it ideal for installing under gunwales, cabin headliners or T-tops. Neon Flex Strip Lights are dimmable as standard.

Powered by a Strip Light Driver*.

Model type:
SNL180



SNL180	
Colors	White temperature tuneable (2700k to 6500k) and full spectrum RGB in the same Neon Flex Strip
Ingress Protection	IP67
Supply Voltage	10.5 - 31 V DC
Max Current Draw 12/24V DC	0.17 / 0.09 A per ft (0.56 / 0.28 A per m)
Installation location	Exterior / partially covered areas / interior/ for above water applications only
Mechanical installation	Stainless steel screw clips
Salt spray tested and UV resistance	Yes
Control Options	Any combination of compatible MFD, STV 2204-i Display and internet connected device
	Momentary switch (warm white, mid white, cold white, cyan, blue, magenta, green, red)

*Strip Light Driver will power and control up to 10 linear meters/30 feet of SNL180 and/or SL180. Stabilized and non-stabilized Strip Light Drivers available

LUMISHORE

Christ+Craft



Strip Lights

Lumishore's CRGBW Lux Strip Lights are an excellent solution to your mood lighting needs, while providing incredible flexibility. Create your own ambience with a subtle blend of colors – perfect for indirect mood lighting in relaxing areas or to accentuate and highlight architectural features on the boat for a strong visual impact. Lux Strip Lights are dimmable as standard.

The new SL180 Cut and Seal Strip Light allows you to cut your Lux Strip Lights to the length you require*.

Lux Strip Lights are powered by a Strip Light Driver**

Model types:***

SL180 Exterior

SL180 Cut and Seal



	SL180 EXTERIOR	SL180 CUT & SEAL
Colors	White temperature tuneable (2700k to 6500k) and full spectrum RGB.	
Number of LEDs	56 per ft (180 per m)	
Ingress Protection	IP68	
Supply Voltage	10.5 - 31 V DC	
Max Current Draw 12/24V DC	0.17 / 0.09 A per ft (0.56 / 0.28 A per m)	
Installation location	Exterior/ partially covered areas/ interior/ for above water only	
Mechanical installation	Adhesive backing and screw clips	Cut & Seal before install/ Adhesive Backing & Screw Clips*
Salt spray tested & UV resistance	Yes	
Control Options	Any combination of compatible MFD, STV 2204-i Display and internet connected device	
	Momentary switch (warm white, mid white, cold white, cyan, blue, magenta, green, red)	

*Create 2 strips out of any standard Lux Strip Light length. Cut points are spaced at 100mm intervals. A sealing kit is provided, including glue and end caps to seal the cut end of the LED strip, making it completely water tight. Refer to manual to follow the correct process

** Strip Light Driver will power and control up to 10 linear meter/30 feet of SNL180 and/or SL180

*** SL180 IP22 model also available - for interior use only- visit website for information

LUMISHORE





Downlights

Lux Downlights are the perfect combination of quality, performance and style, making them ideal for interior and/or exterior overhead lighting and designed for all cabin ceiling heights! The Lux Lighting Collection offers the first marine-grade CRGBW Downlight with an anti-glare option within the same low-profile unit, ideal for lower ceilings without the space for recessed bodies. Lux Strip Lights are dimmable as standard and finished in stainless steel, white or black bezels with hard-anodized aluminum bodies.

Powered by the Lux Light Control Module*.

Model types:

DL50

DL65

DL65 AG (Anti-Glare)



	DL50	DL65	DL65 AG
Colors	White temperature tuneable (2700k to 6500k) and full spectrum RGB		
Ingress Protection	IP68		IP65
Supply Voltage	10.5 - 31 V DC		
Max Current Draw 12/24V DC	0.5 / 0.25 A	0.6 / 0.3 A	
Installation location	Exterior/ partially covered areas/ interior		Interior only
Mechanical installation	Spring clips (marine adhesive optional)	Spring clips/ screw fitting (optional)/ marine adhesive (optional)	
Salt spray tested and UV resistance	Yes		
Control Options	Any combination of compatible MFD, STV 2204-i Display and internet connected device		
	Momentary switch (warm white, mid white, cold white, cyan, blue, magenta, green, red)		

*The Lux Light Control Module will power and control up to 16 Downlights, Courtesy Lights and/or Livewell Lights

LUMISHORE

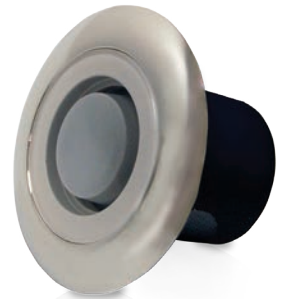


Courtesy Lights

Lumishore's Lux Courtesy Lights are perfect for lighting external walkways, stairs and architectural elements of a boat, while at the same time creating a warm and comfortable atmosphere. Suitable for interior and exterior installation, Lux Courtesy lights will not only enhance any space, they will add visibility and safety onboard. Dimmable as standard.

Powered by the Lux Light Control Module*

Model type:
CL25



Livewell Lights

Lumishore's Lux Livewell Lights are built for the harsh environment of livewells, fish boxes and splash wells. Suitable for any wet place onboard, or submerged underwater, where an internal screw thread/locking nut is desirable. Can be installed with or without stainless steel bezel. Dimmable as standard.

Powered by the Lux Light Control Module*

Model type:
LW25



	CL25	LW25
Colors	White temperature tuneable (2700k to 6500k) and full spectrum RGB	
Ingress Protection	IP68	
Supply Voltage	10.5 - 31 V DC	
Max Current Draw 12/24V DC	0.1 / 0.05 A	
Installation location	Exterior/ partially covered areas/ interior	Livewell/ exterior/ partially covered areas/ interior
Mechanical installation	Screw fixings/ marine adhesive (optional)	Bulkhead panel mount and marine adhesive
Salt spray tested and UV resistance	Yes	
Control Options	Any combination of compatible MFD, STV 2204-i Display and internet connected device	
	Momentary switch (warm white, mid white, cold white, cyan, blue, magenta, green, red)	

*The Lux Light Control Module will power and control up to 16 Courtesy Lights, Downlights and/or Livewell Lights

LUMISHORE





Speaker Light Driver

Double the fun with Lumishore’s Lux Speaker Light Driver! Plug in your quality audio system via the Lumi-Link Command Center’s mini jack and enjoy Lumishore’s unique multi-media sound-to-light experience.

By analyzing music signals and splitting them into 3 frequency bands, the Lux Speaker Light Driver allows you to select colors for each frequency - **a dynamic lighting experience, from one song to the next.**

Wow your guests by pulsing your Lumishore lights to the frequency of the music in any color, color cycle, or oscillating pattern.



SPEAKER LIGHT DRIVER	
Colors	White temperature tuneable (2700k to 6500k) and full spectrum RGB
Ingress Protection	IP68
Supply Voltage	10.5 - 31 V DC
Max Current Draw 12/24V DC	5.6A / 2.8A
Size	113 mm x 79 mm x 27mm (4.44" x 3.1" x 1.1")
Case construction	Powder coated marine grade aluminium
Speakers per driver	Up to 16
Control Options	Any combination of compatible MFD, STV 2204-i Display and internet connected device
	Momentary switch (warm white, mid white, cold white, cyan, blue, magenta, green, red)

LUMISHORE



Flood Lights

Designed to offer a high-intensity light source onboard, wherever you need it. Perfect for deck, cockpit lighting, or for general security purposes. With ultra-wide beam angles for full coverage and custom diffusion optics, creating consistent color and even light beam spread.

Lumishore’s new low-profile articulating LUX Flood Lights are ideal for exterior mounting on cabin tops, t-tops, arches, transoms and radar pedestals. Dimmable as standard.

Powered by the Lux Light Control Module*



FLOOD LIGHT 4"		FLOOD LIGHT 18"
Colors	White temperature tuneable (2700k to 6500k) and full spectrum RGB	
Ingress Protection	IP68	
Supply Voltage	10.5 - 31 V DC	
Max Current Draw 12/24V DC	1.7 A/0.9A	9.2 A/4.6A
Mechanical Installation	Single Stainless Steel Fixing Bracket	
Housing Type	Powder Coated Aluminium Body with Frosted Lens	
Installation Location	Cabin tops, t-tops, arches, transoms and radar pedestals	
Beam Angle	70° - 90° Oval Beam	
Control Options	Any combination of compatible MFD, STV 2204-i Display and internet connected device	
	Momentary switch (warm white, mid white, cold white, cyan, blue, magenta, green, red)	

*The Lux Light Control Module will power and control up to 5 Flood Lights

LUMISHORE





Lumi-Link Command Center

The Lumi-Link Command Center is the heart of the entire system and is the key to controlling the LUX Lighting Collection*.

It is the marine industry's only plug-and-play module with pre-installed interfaces and lighting options straight out of the box. Simply connect the Lumi-Link Command Center to a compatible MFD*, optional STV 2204-i Display and connected smart phone or tablet, and smart control for your lighting fixtures will appear automatically. It's that easy!



LUMI-LINK COMMAND CENTER	
Colors	White temperature tuneable (2700k to 6500k) and full spectrum RGB
Ingress Protection	IP67
Supply Voltage	10.5 - 31 V DC
Max Current Draw 12/24V DC	0.5A
Size	113 mm x 61 mm x 33mm (4.45" x 2.4" x 1.3")
Case construction	Robust weatherproof ABS (flame retardant and halogen free)
Control Options	Any combination of compatible MFD, STV 2204-i Display and internet connected device
	Momentary switch (warm white, mid white, cold white, cyan, blue, magenta, green, red)

*The Lumi-Link Command Center also controls Lumishore's EOS Series Underwater Lights.

LUMISHORE



ZONES

LUMISHORE

top



Intensity

White Balance



GARMIN



Flexible Display and Control Options



GARMIN. Raymarine SIMRAD B&G FURUNO

Connect the Lumi-Link Command Center to one or more compatible MFDs*, optional STV2204-i Display and any internet capable smart phone.

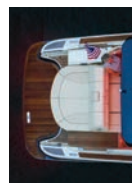
Lumishore's intuitive interface features a simple-to-use color wheel for cold and warm whites as well as full color selection, horizontal slide bars for quick adjustments to lighting intensity and white balance in each color, and control lighting across multiple zones with optional presets. Choose from pre-programmed effect modes like strobe, sweep or cycle and the unique 'Sound-to-Light'.

The Lumi-Link Command Center has an input for "triggers" allowing for programable lighting events' personal to you. For example, a "welcome" lighting scene for your arrival on the boat and a "berthing" scene for when you enter the boat's home port at night. Simple to set up and use, owners can control the lights by zone and create lighting scenes to match any mood.

Zone 1



Zone 2



Zone 3



Zone 4



*Currently compatible with major MFD manufacturers - Garmin, Raymarine, Simrad, B&G and Furuno.



Clarion Craft

LUMISHORE



**UNDERWATER LED
LIGHTING SYSTEMS**

LUMISHORE



Contents

About Lumishore	2
Mounting Types	4
Color Options	6
Beam Angles	8
Online Configurator	8
Lighting Control Systems	10-12
Full Color Change Thru-Hull Underwater Lights	14
Full Color Change Surface Mount Underwater Lights	16
Dual Color Thru-Hull Underwater Lights	18
Dual Color Surface Mount Underwater Lights	20
Single Color Thru-Hull Underwater Lights	22
Single Color Surface Mount Underwater Lights	22
Lumi Cam - Underwater HD Camera	22

LUMISHORE



LUMISHORE



Superyacht Underwater LED Lighting



Lighting your superyacht!

Our passion for designing beautiful underwater lighting effects and our desire to share our mechanical, electrical and electronics expertise is the inspiration that drives us to create the most brilliant underwater lighting systems for superyachts.

Underwater lighting has seen dramatic changes in recent years with the coming of age of LED technology as the clear choice for superyacht underwater lighting systems. This shift has driven a fundamental rethink: today's LEDs are not only far more powerful and efficient than previous traditional 'bulb' technologies, they can also offer a vast array of exciting new and innovative functions and capabilities.

Beautiful, well designed, superyacht underwater lighting systems create nights as beautiful as days, personalizing your superyacht and providing owners and their guests the ultimate ambiance, whether for a special event or an intimate occasion.

Whether the yacht is in build or retro-fit, we're positioned to help you design the highest performing and most functionally advanced underwater lighting system for your yacht. The innovative solutions and advanced features of Lumishore lighting systems have been developed in collaboration with owners, designers, and shipyards to the highest technical and aesthetic standards.

Each project is individual, and our professional team will work with you to help you create your desired underwater lighting effects. We will advise and recommend the correct Lumishore underwater light models, lenses and flanges according to the hull design and in line with your particular requirements. Working with the shipyard, and using hull drawings, we will recommend the optimum light placements, according to your brief.



Why Lumishore superyacht lighting systems?

Lumishore Superyacht Lighting systems have significant advantages over competing lights:

Superior design – engineering excellence is in our company's DNA and at the core of Lumishore's entire product range. Efficient, patented, electro-mechanical designs ensure optimal heat management, ease of installation, efficiency and in-service durability.

Brighter in every individual color – and at least double the brightness of competing underwater lights.

Product portfolio – Lumishore provides the right product for every superyacht application from 24 meter yachts to the worlds largest superyachts, from new build to refit, from weld-in for metal hulls to thru-hull for GRP hulls and tenders. Lumishore also provides underwater HD cameras for both security and entertainment.

Advanced communication protocols – to optimize performance and output and to control individual lights.

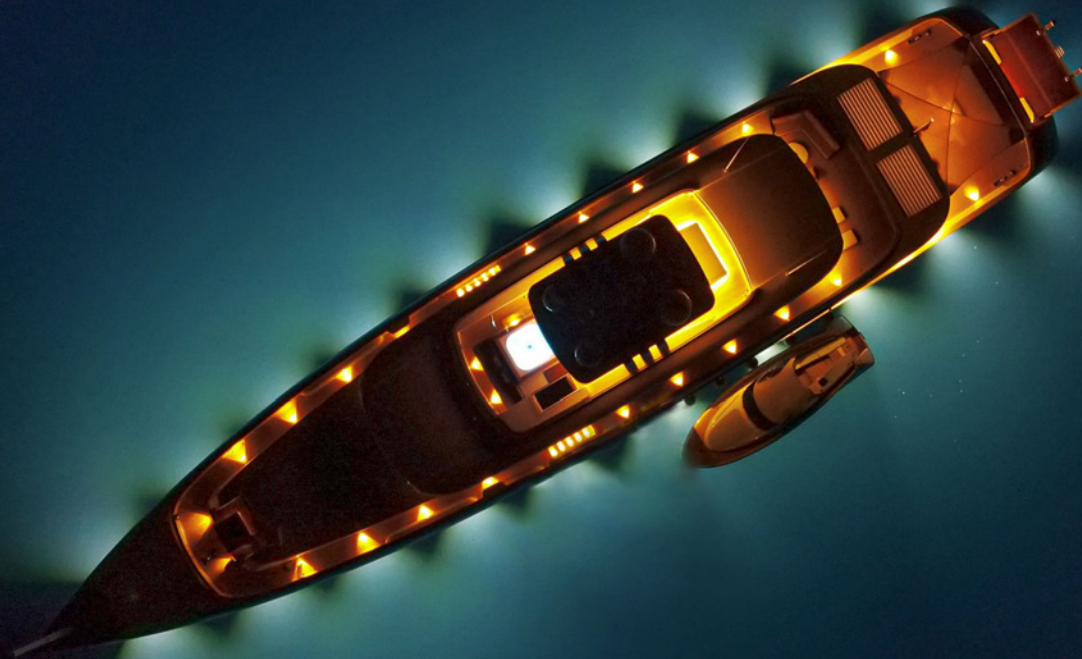
Lumishore quality guarantee – Our UK based manufacturing facility is ISO9001 certified. Our superyacht products are in-house designed, developed and manufactured in our UK facility, and are backed by a 2 or 3-year guarantee and full support.

Type approvals – Lloyd's, ABS and DNV-GL; Lumishore is the only underwater LED lighting provider with full Lloyd's Type Approval including the safety-critical EMC/EMI testing and compliance.

Industry recognized – recipient of multiple awards for product excellence, innovation, and business achievement.

Professional and commercial integrity – is also part of Lumishore's DNA. All technical data, including Fixture Lumens is actual and factual. Lumishore use independently tested integrating spheres, EVERY individual light supplied is measured and tested to exact tolerances. Lumishore is an established, customer-focused and financially sound organization.

Insist on Lumishore - the global leader in design and manufacture of the world's leading high-performance underwater LED lighting systems!



Weld-in lights for aluminum & steel hulls

Lumishore weld-in fixtures provide a perfect flush mount for steel and aluminum hull superyachts. Their ultra-slim internal profile enables easier installation in areas with difficult or restricted access, together with internally or externally accessible light units, to create even hull spacing regardless of tanks or other obstacles inside the vessel. The 'Louvre Lens' weld-in model requires only a standard flange regardless of hull angle. Since the LED array itself is adjusted to optimize light output, there is no need for angled flanges. For all other weld-in models, a range of flange angles are readily available.

Unique benefits to Lumishore systems include the highest light output of any lighting system currently available, for any lighting technology. Accurate, independently ratified test results prove fixture lumens for our superyacht range of between 8,400 and 20,000 fixture lumens.

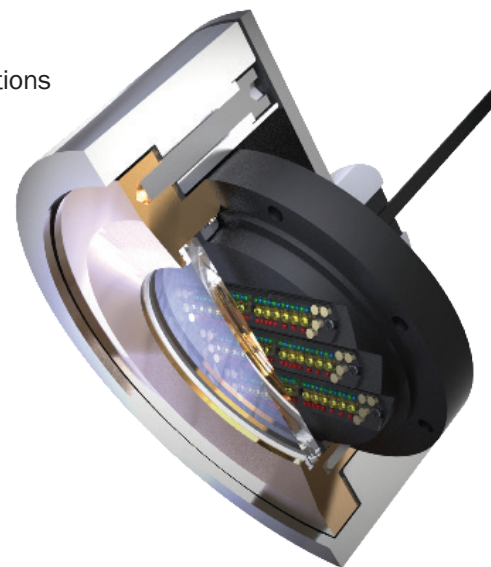
A choice of beam angles – our unique ultra-wide 110° degree or focused 60° degree beam angles are available, to create the desired underwater lighting effects. Our ultra-wide angle is ideal for creating the popular 'Halo Effect' around the hull. Most importantly this combination of vastly superior light outputs and widest beam angles mean Lumishore can recommend wider spacing between lights (3.5 - 4 meters), which allow fewer Lumishore light fixtures to be installed, while still achieving the ultimate underwater illumination.

Lumishore superyacht lights are available in single color (blue, white or warm white), dual-color (blue *and* white/ white and warm white), as well as the award-winning EOS full color change system, which is designed to deliver the very highest standards and color control capabilities.

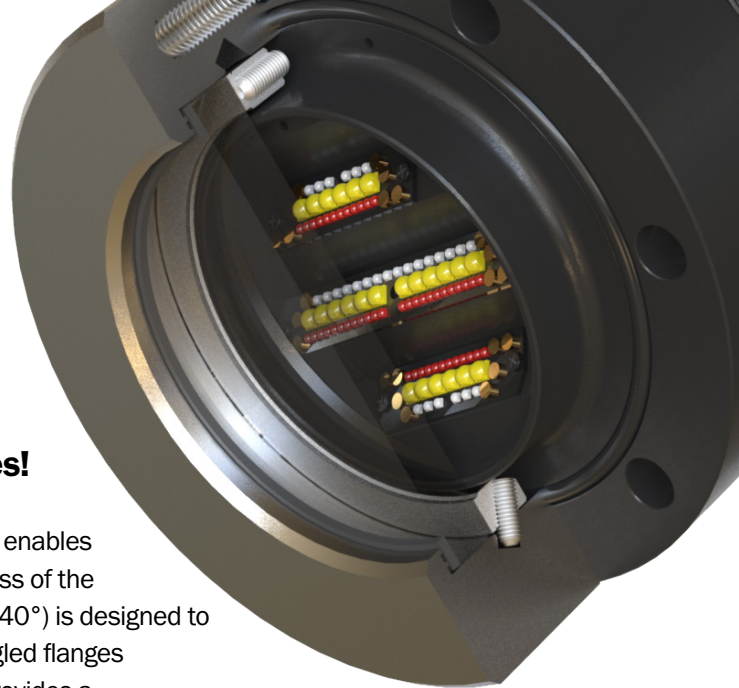


Features & benefits of weld-in models

- » Patented adjustable Louvre lens eliminates the need for long, angled flanges
- » Interchangeable/accessible from inside or outside the vessel
- » Slim-fit internal profile enables easier installation in awkward, restricted-access locations
- » Choice of beam angles including 110° ultra-wide angle for the perfect halo effect
- » Available in ORA single color (blue, white or warm white), SUPRA dual color (blue and white/ white and warm white) and EOS full color change
- » High-power RGBW lighting system controllable via standard communication protocols for easy integration with on-board entertainment systems
- » Advanced Thermal Management, giving greater reliability and longer life
- » Over voltage/current, reverse polarity, and thermal rollback protection
- » Life expectancy of 50,000+ hours
- » ABS and DNV-GL Classification Approvals and the only underwater LED lighting provider with full Lloyd's Register Type Approval including the safety-critical EMC/EMI testing and compliance
- » External driver may be placed away from light and grouped in one enclosure
- » Simple plug-and-play connectors
- » Diagnostic LED's on all drivers



Meet the new SY225 Louvre Compact



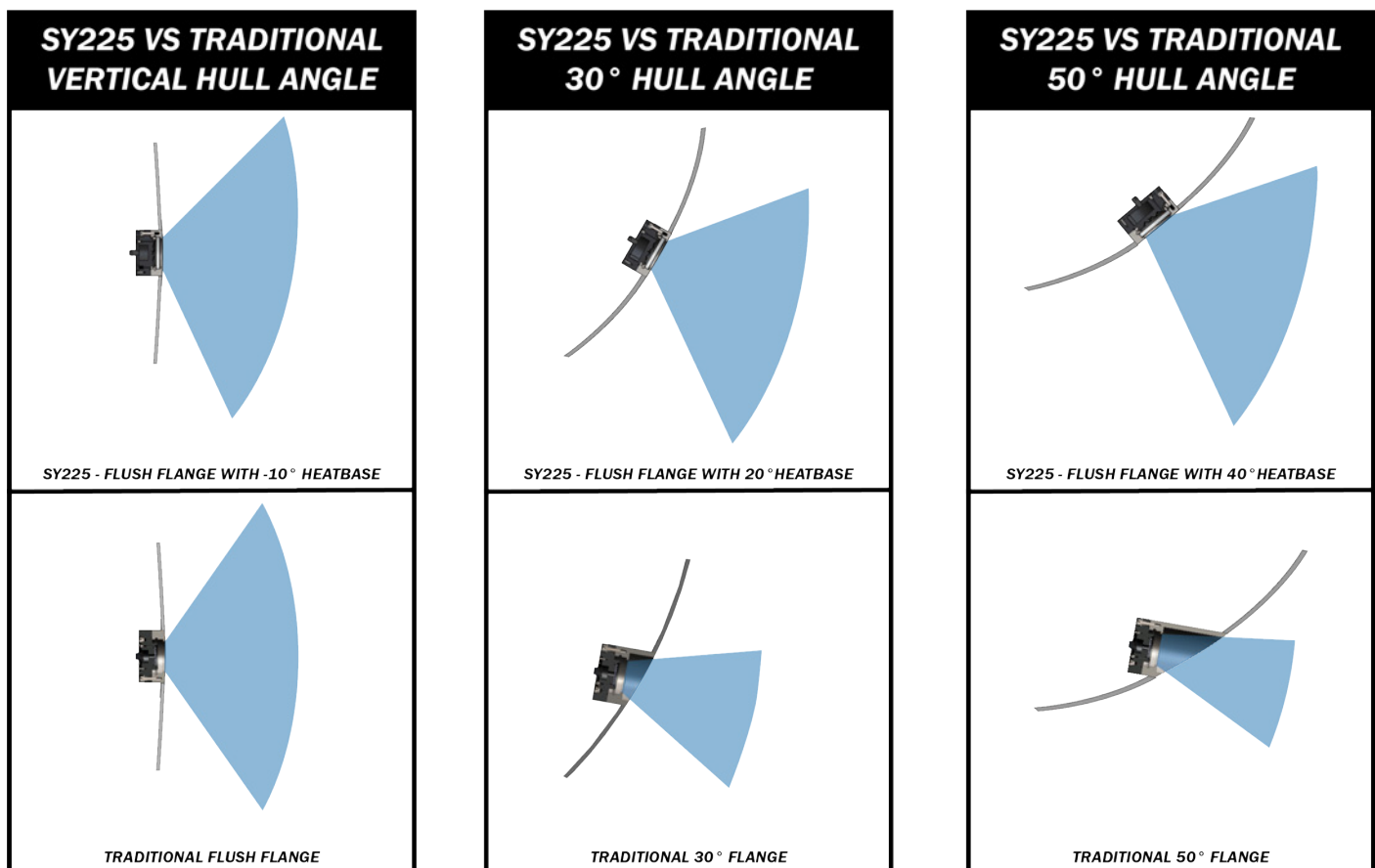
The latest concept in weld-in underwater light fixtures!

Making use of a patented internally adjustable 'Louvre' lens system, this enables a flush-fit, weld-in flange for each and every underwater location regardless of the hull shape. The louvered LED array of each light (available from -10° to $+40^{\circ}$) is designed to account for all hull angles, eliminating the light lost in traditional long, angled flanges and units designed with angled or reflector optics. This new innovation provides a significantly easier installation with multiple benefits to the installer.

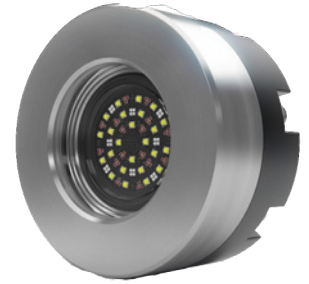
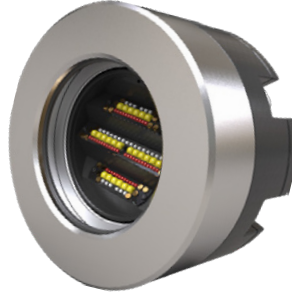
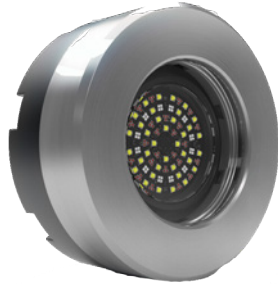
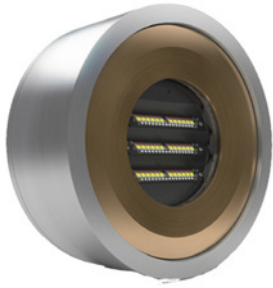
The SY225 Louvre Compact delivers the infamous 'Halo Effect' around the entire hull of the yacht. Easily achieved with a consistent, evenly-spaced pattern, and with fewer lights due to an ultra-wide 110° beam angle.

Available in Lumishore's award winning EOS Full Color Change, SUPRA Dual Color (white and warm white) and ORA Single Color (white or warm white) Series. Each offering 11,000 verified fixture lumens, 24,750 lumens and an optional 3 year warranty.

Lumishore has full Type Approval from Lloyds, with unique safety-critical EMC/EMI compliance, as well as approval from ABS and DNV-GL for superyacht underwater LED lighting.



Lumishore Superyacht Lighting Weld-in Models



SY300/310 LOUVRE	SY250 STANDARD	NEW SY225 LOUVRE COMPACT	SY220 COMPACT
<p>GUIDE : > 25 METERS</p> <p>The brightest superyacht light on the market, in every color</p> <p>Ultra-wide 110° beam angle</p> <p>16,600 - 20,000 fixture lumens</p>	<p>GUIDE : > 25 METERS</p> <p>Compatible with earlier SY150/180 models</p> <p>Ultra-wide 110° or focused 60° beam angle</p> <p>12,400 -15,500 fixture lumens</p>	<p>GUIDE : > 25 METERS</p> <p>The latest concept in weld-in underwater light fixtures</p> <p>Ultra-wide 110° beam angle</p> <p>11,000 fixture lumens beam angle</p>	<p>GUIDE : < 50 METERS</p> <p>Installed using traditional angled flanges</p> <p>Ultra-wide 110° or focused 60° beam angle</p> <p>8,400 -10,000 fixture lumens</p>
KEY FEATURES & BENEFITS			
<ul style="list-style-type: none"> »Internal LED Louvre array angle adjusts to produce a consistent beam from within the light regardless of hull shape »Suitable for all hull shapes, especially shallow angles »Optimizes light output and eliminates the need for long, angled flanges »Consistent light output at every location »Flush weld-in flange may be used for each and every underwater location »Easy installation procedure »Slimmest internal profile »SY300 - internally maintained »SY310 - externally maintained, suitable for tank installations »Available in 2 series: SUPRA - white and blue EOS- RGBW full color change 	<ul style="list-style-type: none"> »Direct, bolt-on upgrade to Lumishore existing SY models: SYX150/180 weld-in underwater lights »Improved light outputs – superior to any competing underwater light supplier »Sealed inner LED array - can be accessed from inside the vessel »Available in 2 series: SUPRA – white and blue EOS – RGBW full color change 	<ul style="list-style-type: none"> »Making use of Lumishore’s patented ‘Louvre’ lens system »A flush-fit, weld-in flange for each and every underwater light location »No loss of light, regardless of hull shape »Simplified installation procedure, saving both time and cost »LED array (available from -10 to +40°) is designed to account for all hull angles »Eliminating light lost in traditional long, angled tube flanges or angled internal components »Achieve ultimate halo effect »Internally maintained »Available in 3 series: ORA – white or warm white SUPRA –white and warm white EOS – RGBW full color change 	<ul style="list-style-type: none"> »Ultra-slim internal profile of just 139mm »Ideal for confined hull locations or where access is restricted (i.e. water tanks and bulbous bow) »LED array may be accessed from inside the vessel »Range of flange angles available »Available in 2 series: ORA – white or blue EOS – RGBW full color change



Retro-fit LED lights for metal halide/HID/LED replacement

Lumishore Retro-fit fixtures have been designed for very quick and easy installation – the Retro-fit light simply screws into the existing weld-in flanges. Now, almost all existing HID/metal halide bulb fixtures and older-generation LED fixtures can easily be replaced with Lumishore Retro-fit lights without having to haul or lift the vessel.

Dual-colored SUPRA lights deliver 8,000 fixture lumens in white mode, making them more powerful than competing lights.

The stunning EOS full color change Retro-fit lights are now available to the refit market for the first time offering even more extraordinary effects. Built-in Wi-Fi, Sound-to-Light, Color Sweep, Color Cycle, Brightness Adjust functions, and much more are easily available and controlled with Lumishore's EOS STV2203-i or STV2204-i.

It has never been easier to take advantage of Lumishore's unrivalled LED lighting systems - retro-fit your existing underwater lights now or during your next refit.



Key features & benefits

For the replacement of existing weld-in Metal Halide/HID and older-generation LED lighting systems

- » Interchangeable/LED array can be accessed from inside the vessel
- » Ultra-wide 110° beam angle (restricted by existing flanges only)
- » Highest output of any competing underwater retro-fit unit available
- » Available in SUPRA dual color (white and blue) and EOS full color change
- » Fully integrated 2-way DMX-512 and RDMX compatible*
- » Automatic light discovery and installation*
- » Individual light operation and diagnostics*
- » Built-in Wi-Fi and 'Sound-to-Light' functionality*
- » Pre-programmed and customizable color modes, strobes, cycles, and sweeps with speed adjust*
- » High-power RGBW lighting system controllable via standard communication protocols for easy integration with on-board entertainment systems*
- » Over voltage/current, reverse polarity, and thermal rollback protection
- » Life expectancy of 50,000+ hours

*EOS Series compatible with Lumi-Link Command Center



Thru-hull lights for GRP superyachts

Lumishore Thru-Hull fixtures for GRP hulls are specifically designed for owners who demand underwater lights with the highest light output and widest beam housed in a durable fixture.

Lumishore engineers have perfected a proprietary thermal management technique to ensure the most powerful, most efficient, and most cost effective Thru-Hull underwater lights on the market.

Our unique ultra-wide 110° degree beam is especially ideal for creating the popular 'Halo Effect' around the hull. Lights with an ultra-wide light beam allow wider spacing between lights (3 - 4 meters – depending on model), meaning fewer fixtures are needed to achieve a superior effect.

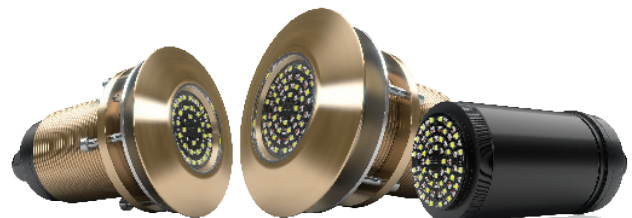
Manufactured from machined aluminum bronze, our Thru-Hull lights adhere to the highest tolerances to withstand the harsh marine environment providing owners peace of mind.

Available in Dual-color (blue and white), as well as our exclusive EOS full color change system which takes color change lighting to a new level with vivid RGBW, industry leading light output, and never-seen-before control of individual lights.

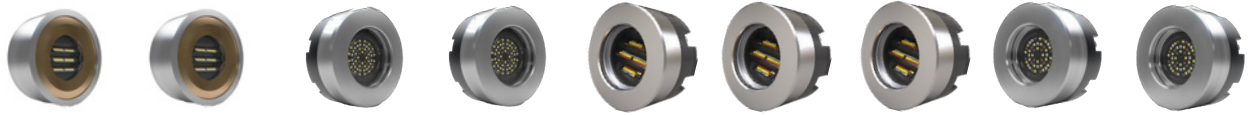
Don't be fooled by imitators, Lumishore is the true leader in high-powered color changing underwater lighting systems.

Key features & benefits

- » Flush-fit Interchangeable Thru-Hull (TIX) models are interchangeable/accessible from inside the vessel without hauling or lifting the vessel
- » Recommended for all GRP vessels over 15m/50'
- » 12/24V DC standard, optional 110/240V AC
- » Available in SUPRA Series (dual color) or EOS Series (full spectrum RGBW color change)
- » EOS model compatible with STV2203-i /2204-i Display
- » SUPRA model compatible with Lumi-Switch
- » Proven fixture lumen range of 10,500 - 17,000
- » Ultra-wide 110° beam angle for the perfect halo effect
- » Over voltage/current, reverse polarity, and thermal rollback protection
- » Life expectancy of 50,000+ hours
- » Lloyd's and RINA Type Approved



Weld-in lighting guide



WELD-IN									
	LOUVRE SY300/310	LOUVRE SY300/310	STANDARD SY250	STANDARD SY250	LOUVRE COMPACT SY225	LOUVRE COMPACT SY225	LOUVRE COMPACT SY225	COMPACT SY220	COMPACT SY220
SERIES	EOS	SUPRA	EOS	SUPRA	EOS	SUPRA	ORA	EOS	ORA
FIXTURE LUMENS	16,600	20,000	12,400	15,500	11,000	11,000	11,000	8,400	10,000
BEAM ANGLE	110°	110°	60° / 110°	60° / 110°	110°	110°	110°	60° / 110°	60° / 110°
SUPPLY VOLTAGE RANGE	Integrated AC Driver (90 - 240 V AC) 24V DC option available	Integrated AC Driver (90-240V AC)	Integrated AC Driver (90 - 240 V AC) 24V DC option available	Integrated AC Driver (90-240V AC)	90-240V AC 24 V DC option also available	90-240V AC	90-240V AC	Integrated AC Driver (90 - 240 V AC) 24V DC option available	Integrated AC Driver (90-240V AC)
MAX CURRENT DRAW (110V AC)	1.8A	1.8A	1.4A	1.4A	1.4 A	1.4 A	1.4 A	1.2A	1.2A
LIGHT ANGLE OPTIONS	-10° to 50°	-10° to 50°	n/a	n/a	-10° to 40°	-10° to 40°	-10° to 40°	n/a	n/a
FLANGE DIAMETER (MM/INCH)	180 mm (7.09")	180 mm (7.09")	160 mm (6.3")	160 mm (6.3")	139mm (5.47")	139mm (5.47")	139mm (5.47")	139mm (5.47")	139mm (5.47")
FLANGE ANGLE OPTIONS	0° (Flush) and 10°	0° (Flush) and 10°	0° (Flush), 10°, 20°, 30°, 40°, 50°	0° (Flush), 10°, 20°, 30°, 40°, 50°	0° (Flush)	0° (Flush)	0° (Flush)	0° (Flush), 10°, 20°, 30°, 40°, 50°	0° (Flush), 10°, 20°, 30°, 40°, 50°
FLANGE MATERIAL	5083L Aluminum (Lloyds 3.1 Certified) 316L Stainless Steel (Lloyds 3.2 Certified)								
INSTALLATION LOCATION	Transom, Side, Bulbous Bow, Water Tank, Fuel Tank (310 Only)	Transom, Side, Bulbous Bow, Water Tank, Fuel Tank (310 Only)	Transom, Side, Bulbous Bow, Water Tank	Transom, Side, Bulbous Bow, Water Tank	Transom and Side Hull	Transom and Side Hul	Transom and Side Hul	Transom, Side, Bulbous Bow, Water Tank	Transom, Side, Bulbous Bow, Water Tank
COLORS	Full Color Change (RGBW)	Dual Color (Blue & White)	Full Color Change (RGBW)	Dual Color (Blue & White)	Full Color Change (RGBW)	Dual Color (White & Warm White)	Single color (White or Warm White)	Full Color Change (RGBW)	Single Color (Blue or White)
TIMED COLOR CYCLE	Yes	n/a	Yes	n/a	Yes	n/a	n/a	Yes	n/a
STROBE	Yes	Yes	Yes	Yes	Yes	Yes	Yes	Yes	Yes
FADE	Yes	n/a	Yes	n/a	Yes	n/a	n/a	Yes	n/a
CONTROLLER	STV2203-i, STV2204-i, DMX Controller (3rd Party)	Enquire	STV2203-i, STV2204-i, DMX Controller (3rd Party)	Enquire	STV2203-i, STV2204-i, DMX Controller (3rd Party)	On/Off/ Colorr Select Switch	On/Off Switch	STV2203-i, STV2204-i, DMX Controller (3rd Party)	Enquire

Retro-fit and interchangeable thru-hull lighting guide

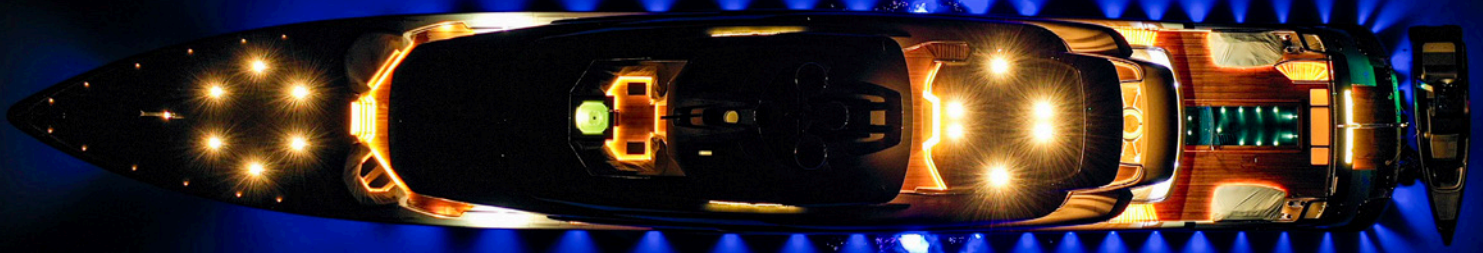


	RETRO-FIT		INTERCHANGEABLE THRU-HULL			
	TRX802	TRX802	TIX802	TIX802	TIX1602	TIX1602
SERIES	EOS	SUPRA	EOS	SUPRA	EOS	SUPRA
FIXTURE LUMENS	8,000	8,000	10,500	12,000	15,500	17,000
BEAM ANGLE	110°	110°	110°	110°	110°	110°
SUPPLY VOLTAGE RANGE	90 - 250 V AC (12 or 24 V DC option available)	90 - 250 V AC (12 or 24 V DC option available)	AC (90 to 240V) 12 / 24 V DC option available	AC (90 to 240V) 12 / 24 V DC option available	AC (90 to 240V) 24 V DC option available	AC (90 to 240V) 24 V DC option available
MAX CURRENT DRAW (110V AC)	0.6A	0.6A	1.2A	1.2A	1.8A	1.8A
LIGHT DIAMETER (MM/INCH)	110mm (4.33")	110mm (4.33")	120 mm (4.72")	120 mm (4.72")	140 mm (5.51")	140 mm (5.51")
SHAFT LENGTH (MM/INCH)	n/a	n/a	184mm (7.24")	184mm (7.24")	184mm (7.24")	184mm (7.24")
CONSTRUCTION	Light Body: Anodized Aluminum (5083), Adaptor Ring: Stainless Steel (316L)	Light Body: Anodized Aluminum (5083), Adaptor Ring: Stainless Steel (316L)	Marine Grade Aluminum Bronze	Marine Grade Aluminum Bronze	Marine Grade Aluminum Bronze	Marine Grade Aluminum Bronze
INSTALLATION LOCATION	Transom, Side, Bottom	Transom, Side, Bottom	Transom, Side, Bottom	Transom, Side, Bottom	Transom, Side, Bottom	Transom, Side, Bottom
COLORS	Full Color Change (RGBW)	Dual Color (Blue & White)	Full Color Change (RGBW)	Dual Color (Blue & White)	Full Color Change (RGBW)	Dual Color (Blue & White)
TIMED COLOR CYCLE	Yes	n/a	Yes	n/a	Yes	n/a
STROBE	Yes	Yes	Yes	Yes	Yes	Yes
FADE	Yes	Yes	Yes	Yes	Yes	Yes
CONTROLLER	STV2203-i, STV2204-i, DMX Controller (3rd Party)	Enquire	STV2203-i, STV2204-i, DMX Controller (3rd Party)	Lumi-Switch or On/Off Switch	STV2203-i, STV2204-i, DMX Controller (3rd Party)	Lumi-Switch or On/Off Switch

Service & support from Lumishore

Superyacht new build and refit projects invariably have bespoke elements which require detailed planning. Lumishore has a dedicated Superyacht Service & Support team who is on hand to ensure immediate support during the entire process – from initial inquiry through installation, commissioning of the lights, and full after-sales support service through our internationally based engineers. This '10-step' process developed with our customers includes initial discussions with the client to determine the required underwater lighting effects, through to selection of the most appropriate Lumishore lighting system for the vessel.

Lumishore provides recommended light placement drawings, flanges size calculations (if required), full equipment listings, and commissioning of underwater lighting systems by Lumishore engineers upon request. Every Lumishore superyacht light is supplied with a standard 2 year warranty, with optional 3 year warranty, subject to inspection and signing off of the installation by a qualified Lumishore technician.



Superyacht Lighting Control Options

Lumi-Link Command Center



Used in conjunction with Lumishore's STV 2204-i Display, Lumishore's Lumi-Link is the world's best marine lighting control system. Take full control of your Lumishore lighting directly from your internet-compatible display device! Simply connect Lumi-Link to the ethernet backbone of the vessel with a single plug-&-play ethernet cable to create a centralized control platform for the entire vessel. Customer-managed "Zones", "Scenes" and "Triggers" can be used to give even greater safety, fun, flexibility and control options. The 3.5mm audio jack also offers our unique sound-to-light functionality.

EOS STV 2204-I Display



The EOS STV 2204-i is a dedicated touch screen glass-bridge full-screen display that can be located anywhere aboard the vessel when connected to the vessels ethernet backbone. Offering simple click-and-play functionality, with easy-to-navigate modern icons and optional full two-way DMX compatibility.

System Control Wherever You Are!



Installing both the Lumi-Link Command Center and STV 2204-i Display enables full connectivity to any Lumishore EOS full color change system, from anywhere aboard the vessel. Using the vessels ethernet and wi-fi network, Lumishore's HTML based control software can be accessed using any mobile device.



Added Value from Lumishore

Rigorous Quality Control - Each Lumishore light is tested four times during manufacture and soak-tested for 48 hours upon completion. The light output of each fixture is measured during the build using specialized Integrating Spheres and our exclusive, specialist-calibrated software, to obtain exact light measurements and accurate fixture lumen outputs. Should any light reading not meet our specified light output parameters, the light is discarded.

Pressure Testing - Every Lumishore superyacht light is equipped with a pressure valve on the rear of the light module. This enables the yard to carry out pressure test before launch to ensure the underwater lights are fully sealed and correctly installed.

Lloyd's 3.2 Certificates - All Lumishore stainless steel/aluminum flanges are supplied with fully-traceable material certificates to EN 10204 3.1 or 3.2.

Lloyd's – EMI/EMC Testing and Compliance - Lumishore is the only underwater LED lighting supplier with full Lloyd's Register Type Approval including EMI/EMC testing and compliance.

Lumishore LED underwater lights out-perform every competing light fixture available on the market today, in their class, in terms of light output, advanced technology, and reliability. We not only welcome side-by-side comparisons with competing light fixtures, we recommend them. This ensures that our customers will make the correct purchasing decision, based on best value.

Lumishore's R&D team are constantly improving our products - we will remain not just one step ahead of the rest, but years.

Every Lumishore superyacht light is supplied with a standard 2 year warranty, with optional 3 year warranty, subject to inspection and signing off of the installation by a qualified Lumishore technician.



About Lumishore

A name recognised throughout the world!

Our vision started in 2008 and was simple: to offer the brightest, high-performance marine lighting systems, that innovate and exceed expectations in terms of quality and function, to create the most beautiful and personalised smart lighting effects, above and below the waterline.

Innovation is key to everything we do

It's what makes us different and keeps us pushing our boundaries and standards even further, year after year, to provide you with the most beautiful marine lighting systems.

It all starts with innovation, and with you, our customer, understanding your needs, anticipating how they may change and how we can innovate to stay ahead and exceed your expectations.

Dedication and attention to detail resonates deeply with our world class Engineering experts, who ensure that we remain at the forefront of marine lighting innovation.

Certification



With Lloyds Type Approval - the first to have full safety critical EMI/EMC compliance testing

LUMISHORE





Mounting Types

How your underwater lights are mounted is important. Lumishore has three light mounting options:

Surface Mount - SMX



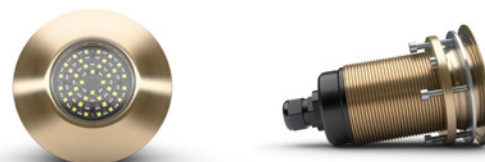
- Compact yet extremely powerful with upto 6,100 Fixture Lumens
- Wide 90° beam angle creates a beautiful lighting effect
- Internal/ built-in driver for ease of installation
- Install to hull surface with 3 screws and small piercing for the cable
- Marine Bronze body with BK7 borosilicate glass lens, to withstand the marine environment
- Transom and side mounting

Thru-Hull - THX



- Most secure mounting type, suitable for transom, side and bottom
- External driver for ease of light unit installation in constrained spaces
- Most powerful Thru-Hull units available - up to 17,000 Fixture Lumens
- Ultra-wide 110° beam angle means the light saturates deep into the water and allows optimum light spacing

Interchangeable Thru-Hull - TIX



- Most secure mounting type, with the added benefit of an internal LED array and integrated driver for the ability to service from inside the hull and easy installation
- Extremely bright, yet compact design is suitable for uniquely minimal hull cut-outs (as small as 1 1/27mm)

LUMISHORE





Color Options

Full Color Control EOS Series and RGBW Full Spectrum

The only fully controllable color change underwater lights available on the market, delivering the greatest range of colors, scenes and zones. Due to Lumishore's intelligent, dynamic channel management, EOS underwater lights are brighter in every color and mixed colors.

Unique light discovery and light auto-install function simplifies the system setup and reduces installation time.

Lumishore's EOS systems are 100% compatible with the world's leading MFD's, as well as smart devices, giving you unprecedented lighting control at your fingertips. No additional programming or software required.



Dual Color Change - SUPRA Series

'2-lights-in-1' in a single high powered fixture. White and blue each run at full power without sacrificing brightness. Synchronized fade and strobe modes, plus unique plug-and-play connectivity to MFDs.



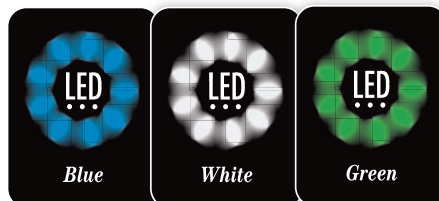
Single Color - ORA Series

The brightest single-colored lights in the most compact fittings:

Blue: most versatile for changing water conditions

White: best in clear, shallow, sandy waters

Green: best for murky, green or brown waters



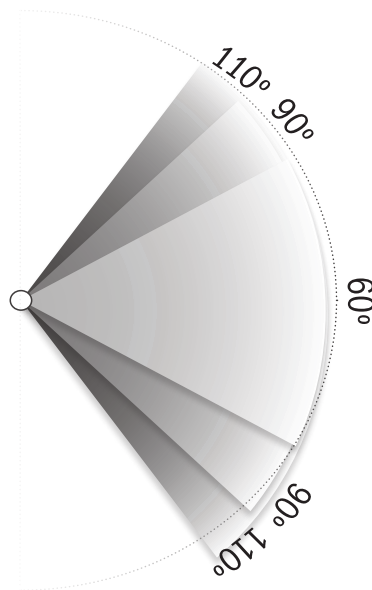
LUMISHORE



Beam Angles

Due to their unrivalled brightness, Lumishore underwater lights have the farthest reach together with widest beam angles, allowing the light to penetrate deep into the water, to create a beautiful, uninterrupted halo of light around your vessel.

- 60° Narrow, focused beam
- 90° Wide beam
- 110° Ultra-wide beam



Configure your lights

Check out our online configurator tool. You can choose your boat style, then test all the various mounting locations, light models, quantity and color options before you buy.



LUMISHORE



Lighting Control Systems

Lumi-Link Command Center



- Take full control of your lighting directly from your MFD, smart device and/or optional Lumishore STV 2204-i Display
- No other controllers or digital switches are necessary
- Over-the-Air (OTA) allows software updates by connecting to laptop or PC via Wi-Fi
- Required for all Full Color Change EOS Series lights (excl. SMX93)

SUPRA Installation/ Upgrade Kit (i-Connect Hub & Switch)



- Enhances function of your Dual Color SUPRA lights
- Required for all TIX/THX models and optional for SMX53
- Plug-&-play junction box makes for easy installation - includes the fuses and easy-connect terminals for the lights and the switch

Lumi-Link SUPRA Bridge



- Full feature control of your Dual Color SUPRA Series light systems from your connected MFD, smart device and/or optional Lumishore STV 2204-i Display (excl. SMX23)
- Lumi-Link's SUPRA Bridge configuration genie will find & configure all lighting fixtures in the system when turned on

Standard on/off switch (customer supplied)



Provides on/off functions for all your Single Color ORA Series models, SUPRA Series Models SMX23, SMX53, and RGBW SMX93

LUMISHORE

LUMISHORE





Lumi-Link MFD Plug-and-Play

Take full control of your Lumishore EOS or SUPRA Series underwater lights and Lumishore LUX above water lights directly from your MFD and/or optional STV2204-i Display. Simply connect the Lumi-Link Command Center to your MFD with a single plug-&-play cable. The intuitive interface includes:

- A simple-to-use color wheel
- Full color selection
- Horizontal slide bars for quick adjustments to lighting intensity and white balance in each color
- Control lighting across multiple zones
- Choose from preprogrammed effect modes like strobe, sweep or cycle and the unique 'Sound-to-Light'

Current* compatible MFD models include:

Garmin OneHelm™

Raymarine Axiom and Axiom Pro

Simrad NSO EVO3 and EVO2, NSS EVO3 and selected Go models (Go7 XSR/ Go9/ Go12)

B&G Zeus3 Glass Helm, Zeus3 and Vulcan

Furuno NavNet TZtouch3 series (TZT12F/ TZT16F/ TZT19F)

STV 2204-i Display

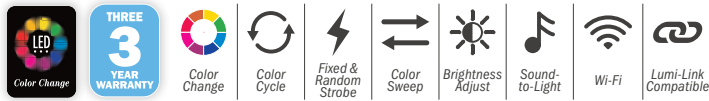
- Optional secondary display**
- Dedicated glass-bridge style touch display and rotary dial
- Easy to manipulate when cruising or with wet/salty hands
- Built in Wi-Fi control
- Compatible with Full Color Change EOS Series and SUPRA Series with Bridge Module (excl. SMX23)

* See website for latest updates

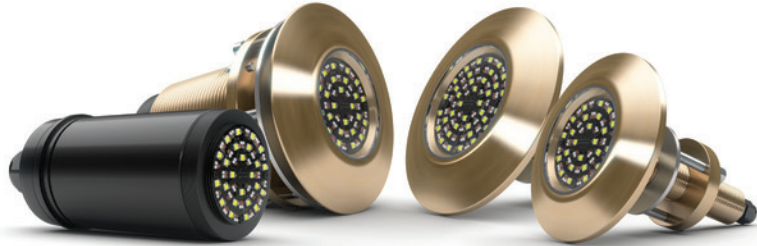
** Can be used in addition to, or instead of an MFD

LUMISHORE





EOS Full Color Control Thru-Hull Underwater Lighting



Undisputed leaders in high-performance full color control underwater lights

Lumishore’s EOS Thru-Hull systems are the brightest color changing lights on the market, with the widest beam angles. Available in two mounting types - standard fit Thru-Hull (THX) and Thru-Hull Interchangeable (TIX). THX models have standard 1” fittings with an external driver and TIX models have an internal driver and can be serviced from inside the hull, without hauling the boat.

- Control colors, modes & special effects directly from your MFD and/or the optional STV 2204-i Display with Lumi-Link Command Center
- Control via any internet capable device connected to the boat’s Wi-Fi via the MFD or optional STV2204i
- Brightness levels up to 15,500 verified fixture lumens
- Flush-fit design and suitable for transom, side and bottom mounting
- All models deliver an ultra-wide 110° beam angle for a beautiful halo effect
- EOS enables automatic light discovery and setup for simple installation

EOS	TIX403	TIX803	THX803	TIX1603	THX1603
LUMENS/ FIXTURE LUMENS	15,570/ 7,000	23,625/ 10,500	23,625/ 10,500	34,875/ 15,500	34,875/ 15,500
BEAM ANGLES	110°	110°	110°	110°	110°
CURRENT (12/24 V DC)	5.8A /2.9A	8.8A / 4.4A	8.8A / 4.4A	6.5A 24 V DC only	6.5A 24 V DC only
RECOMMENDED BOAT SIZE	7-18m/ 25-60ft	7-100m/ 25-330ft	7-100m/ 25-330ft	18m-100m/ 60-330ft	18m-100m/ 60-330ft

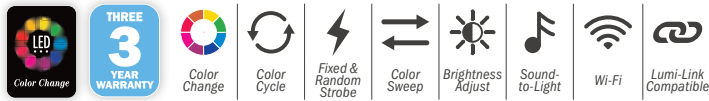
Compatible Controllers/Displays

Take full control of your EOS lighting system directly from your MFD and/or the optional dedicated STV2204i Display. Command Center required.



LUMISHORE





EOS Full Color Control and RGBW Surface Mount Underwater Lighting



Unmatched in ease of installation

Lumishore's marine bronze color-change surface mount lights are available in 2 model types. As well as efficiency and performance, our surface mount lights are unmatched in ease of installation. Whether you are setting the mood for a boating adventure, fishing or having a party on board, you can choose the perfect color to illuminate the water below. Both feature a wide 90° beam angle and an extremely compact low profile.

- SMX153 (EOS full color change) is compatible with Lumi-Link, offering features such as Wi-Fi control, Sound-to-Light, synchronized fade, sweep and strobe, directly from your compatible MFD and/or optional STV2204-i Display
- SMX93 (RGBW color change) uses a standard on/off switch; toggle to freeze or cycle colors
- Brightness levels up to 5,500 verified fixture lumens
- EOS enables automatic light discovery and set up for simple installation
- Can be fitted nearly anywhere on the hull including stepped hulls, transoms, and sides

RGBW & EOS	SMX93	SMX153
LUMENS/ FIXTURE LUMENS	11,475/5,100	12,375/5,500
BEAM ANGLES	90°	90°
CURRENT (12/24 V DC)	3.5A /1.75A	4.0A / 2.0A
RECOMMENDED BOAT SIZE	6-9m / 20-25ft	7.5-12m / 25-40ft

Compatible Controllers/Displays

Control SMX153 lights directly from your MFD and/or optional STV2204-i Display (Lumi-Link required). Control SMX93 lights with a standard on/off switch to toggle on cycled colors.

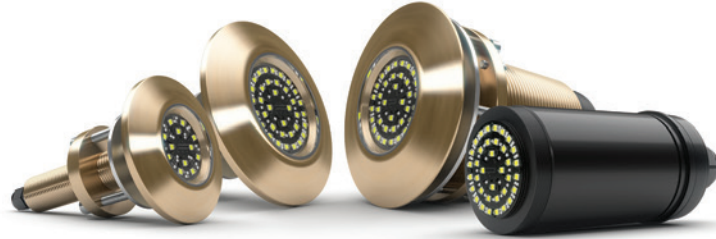


LUMISHORE





SUPRA Dual Color Thru-Hull Underwater Lighting



Full power dual-colored lights without sacrificing brightness

Lumishore's SUPRA Thru-Hull systems are available in two mounting types - standard fit Thru-Hull (THX) and Thru-Hull interchangeable (TIX) with brightness levels up to 17,000 fixture lumens. THX models are standard 1" fittings with an external driver and TIX models have an internal driver and can be serviced from inside the hull, without hauling the boat.

- All deliver an ultra-wide 110° beam angle for the ultimate halo effect
- Easily switch colors, fade colors, adjust brightness, and strobe in two speeds
- Flush-fit design, suitable for transom, side and bottom mounting
- Lumi-Link compatible for direct control from your MFD and/or optional Lumi-Link STV 2204-i Display (requires the Lumi-Link SUPRA Bridge)

SUPRA	TIX403	THX403	TIX803	THX803	TIX1603	THX1603
LUMENS/ FIXTURE LUMENS	16,650/ 7,400	16,650/ 7,400	27,000/ 12,000	27,000/ 12,000	38,250/ 17,000	38,250 17,000
BEAM ANGLES	110°	110°	110°	110°	110°	110°
CURRENT (12/24 V DC)	6.4A/3.2A	6.4A/3.2A	8.8A/4.4A	8.8A/4.4A	6.5A 24V DC only	6.5A 24V DC only
RECOMMENDED BOAT SIZE	7-18m/ 25-60ft	7-18m/ 25-60ft	7-100m/ 25-330ft	7-100m/ 25-330ft	18m-100m/ 60-330ft	18m-100m/ 60-330ft

Compatible Controllers/Displays

Control your SUPRA Series Thru-Hull underwater lights with the SUPRA i-Connect Hub & Switch. For direct control of your lights from your compatible MFD and/or the STV2204-i add the SUPRA Lumi-Link Bridge.



LUMISHORE





SUPRA Dual Color Surface Mount Underwater Lighting



2-in-1 (blue and white) in a single fixture - each color run at full power

Lumishore's bronze surface mount lights are built with the same high-quality marine grade bronze and borosilicate glass lens as the thru-hull range to withstand the harsh marine environment. At just 70-95mm (2-3/4" - 3-3/4") diameter, they can be fitted nearly anywhere on the hull including stepped hulls, transoms, and hull sides of nearly any type of boat.

- Full power dual-colored lights without sacrificing brightness
- Both models feature a wide 90° beam angle
- 2,500- 6,100 tested and proven fixture lumens
- SMX53 is Lumi-Link compatible for direct control from your MFD and/or the optional STV2204-i Display (requires the Lumi-Link SUPRA Bridge)
- Both models feature an internal driver
- Plug-and-play connectors for simplified installation

SUPRA	SMX23	SMX53
LUMENS/ FIXTURE LUMENS	5,625/2,500	13,725/6,100
BEAM ANGLES	90°	90°
CURRENT (12/24 V DC)	2.5A (12 V DC only)	5.3A/2.6A
RECOMMENDED BOAT SIZE	5.5-7.5m/18-25ft	7.5-12m/25-40ft

Compatible Controllers/Displays

Control SMX53 lights with a standard on/off switch or the SUPRA i-Connect Hub & Switch for additional features. For direct control from your compatible MFD add the SUPRA Lumi-Link Bridge Module. Control SMX23 lights with a standard user-supplied on/off switch to toggle on colors and effects.



LUMISHORE





ORA Single Color Thru-Hull Underwater Lighting

TIX202 is the world's slimmest Interchangeable thru-hull light, delivering a focused 60° beam angle and is available in blue, white or green. The TIX404 is a compact, low profile interchangeable thru-hull, with an ultra-wide 110° beam angle - available in single white. Both models can be serviced from inside the hull without hauling and have a 3-year warranty.

THX203 is an ultra-slim thru-hull, with a small hull cut out requirement of only 5/8" (16.5mm). This light features an ultra-wide 110° beam angle, is available in blue or white and has a 2-year warranty.

- Suitable for transom, side hull or bottom installations
- Feature an internal driver



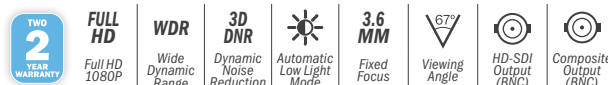
ORA Single Color Surface Mount Underwater Lighting

Specifically designed for smaller boats, the SMX11 offers unmatched light output and optics for a light of its size. Available in blue, white or green, it features 1,100 fixture lumens, a focused 60° beam and a 1 year warranty. SMX53 B is available in blue, delivers 3,000 fixture lumens, a 90° beam and has a 2 year warranty. Both models are suitable for transom mounting.

- Easy to install
- Both models feature an internal driver

ORA	TIX202	TIX404	THX203	SMX11	SMX53 B
LUMENS/ FIXTURE LUMENS	9,225/4,100	10,125/4,500	12,600/5,600	2,475/1,100	6,750/3,000
BEAM ANGLES	60°	110°	110°	60°	90°
CURRENT (12/24 V DC)	4.0A/1.9A	4.0A/2.0A	4.9A/2.4A	1A 12V DC only	1.7A/0.75A
RECOMMENDED BOAT SIZE	7.5-24m/25-80ft	7.5-24m/25-80ft	7.5-24m/25-80ft	4.5-7m/15-24ft	5.5-7.5m/18-25ft

Lumi-Cam Underwater HD Camera



Lumi-Cam brings all the amazing detail of magnificent sea life and beautiful underwater terrain to life in vivid high-definition color. The world's smallest Full HD Mega Pixel (1080p) underwater camera is compact and 'flush-fit' in design, allowing it to be mounted nearly anywhere on the hull. It's integrated internal module makes for simple installation.

ORA Series underwater lights are controlled by a standard user supplied on/off switch

LUMISHORE



Accept no compromises, choose only quality marine lighting.