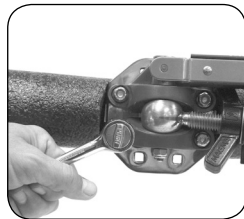
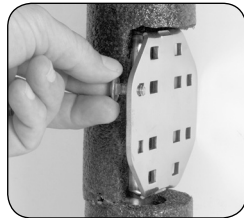
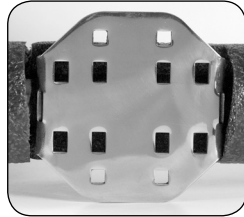


Assembly, Installation, Care & Use Instructions

R10-625

Fish Rod Holder Mounted Removable Kayak/SUP Rack. 100% 18-8 Stainless Steel. Fits Standard Fish Rod Holders (Sold Separately)

- Attach mount to racks mounting plate
- Insert 1/4"-20 x 5/8" bolts through plate assembly and install lock nuts
- Using 7/16" wrench, securely tighten (4) bolts
- Repeat steps for 2nd rack assembly



CONTENTS

- (2) – Rack Arms with Foam Pads and Protective Covers
- (2) – **Pow'rGrip™ / LevelLock®** Rod Holder Mounts
- (8) – 1/4"-20 x 5/8" Carriage Bolts
- (8) – 1/4"-20 Lock Nuts

ADDITIONAL TOOLS REQUIRED

7/16" Socket Wrench
(used for initial setup only)

- Insert mount into rod holder and secure in place by tightening the **Pow'rGrip™** wing nut assembly
- Once mount is secured; adjust **LevelLock®** assembly and lock in place with securing lever

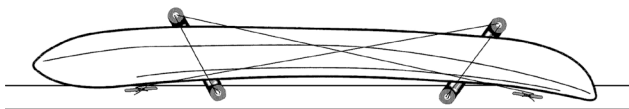
NOTE: Rack should be angled slightly inboard to accommodate weight of equipment



ATTACHING SECURING STRAPS TO TIE-DOWN POINTS

(Securing straps not included)

- Attach line to back securing eyelet, extend over kayak or SUP, pass line through front securing eyelet, once again over kayak or SUP and secure to cleat at opposite rack arm
- Repeat all steps, starting at opposite rack arm



CARE & USE

- Kayak's/SUP's should be evenly balanced in rack prior to securing
- Always secure kayak's/SUP's to rack when underway or at anchor
- Kayak's/SUP's should also be securely tied to rails or cleats
- Periodically wash rack with environmentally friendly boat soap, fresh water, and a clean cloth to remove any debris, wipe dry
- Water toys should always be rinsed with fresh water before storing

MAGMA[®]

U S A