

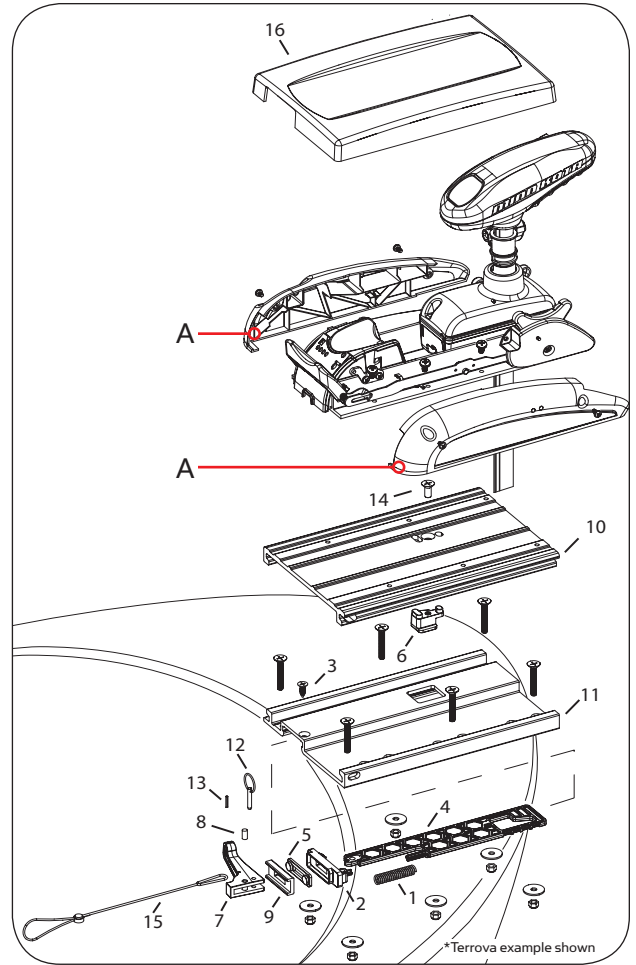


# MKA-32 Quick Release Bracket

For Use with all PowerDrive, Terrova and Ulterra Trolling Motors.

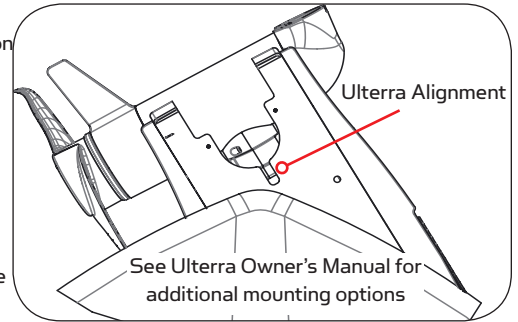
Kit Includes:

Item #	QTY.	Part #	Description
1	1	2222716	Spring, Compression
2	1	2223205	Stop, Draw Bar Quick Attach
3	1	2223452	Screw, 1/4 x 3/4 AB
4	1	2223605	Draw Bar Quick Attach Plate
5	1	2225110	Pad, Urethane
6	1	2228412	Cam Puck
7	1	2228415	Cam Lever
8	1	2262635	Pin Roller
9	1	2371937	Plate, Backer
10	1	2371986	Plate, Top
11	1	2371996	Plate, Base
12	1	2372623	Pin, w/Ring
13	1	2372644	Roll Pin
14	1	2373428	Screw 5/16-18 x 3/4"
15	1	2373650	Lanyard, Plastic
16	1	2770245	Cover, Quick Release Plate
■	1	2994863	Bag Assembly, Includes:
	6	2332104	1/4" x 5/8" Screw
	6	2223446	Flat Head 1/4" x 2" Screw
	6	2263103	1/4" Lock Nut
	6	2261713	1/4" Washer



## Installation Instructions:

- Remove both side covers (marked [A] in the illustration).
- Remove Pin [12] and open Cam Lever [7]. Remove the Top Plate [10] from the Base Plate [11].
- Use the (6) 1/4" x 5/8" Screws to fasten the Top Plate to the bottom of the motor base extrusion.  
**Note:** For Ulterra motors use the hex head screws and clipped washers that came with the Ulterra.
- Re-install both side covers. Assemble the motor and Top Plate onto the Base Plate and latch the Cam Lever.
- Positioning the motor/quick release bracket for mounting location:  
A: For PowerDrive or Terrova motors: Fully deploy the motor and position the bracket/motor on the bow of your boat to check for proper clearance (the motor, as it is lowered into the water or raised into the boat must not encounter any obstructions.)  
B: For Ulterra motors: Position the bracket/motor so the notch in the base is aligned with the rubrail of the boat (for proper clearance the entire notch must be visible beyond the rubrail, as shown to the right.)
- Mark the side edges and rear of the Base Plate on the bow of your boat. Open the Cam Lever and remove the Base Plate. Reposition the Base Plate to the marks. Locate and mark the (6) mounting holes in the Base Plate and drill the holes to 9/32" diameter. Fasten Base Plate to the bow using (6) 1/4" x 2" Flat Head Screws, (6) Fender Washers and (6) Lock Nuts.  
**Note:** Mounting surface for Base Plate must be completely flat. Washers must be used to shim base plate flat before hardware is tightened. Top Plate will not fit correctly unless Base Plate is installed completely flat.
- Install motor/Top Plate to Base Plate and latch Cam Lever.
- Your motor is now mounted. Always check that the Cam Lever is latched always use Pin [12] to ensure cam lever remains latched.
- Cover [16] is available to use when motor is not mounted on the boat. To install the cover, lay cover on top of base plate, apply down pressure to the center of the Cover while latching the Cam Lever. Cover should fit snug to the Base Plate.



WARNING: This product contains chemicals known to the State of California to cause cancer and birth defects or other reproductive harm.



Check out the collection of boat parts & hardware we offer.