



# MKA-42 or MKA-52/62 Quick Release Bracket

For use with Fortrex, Maxxum, Edge and other Scissor Mount Motors.

Kit Includes:

Item #	QTY.	Part #	Description
1	1	▼	Slide Plate
2	1	▼	Base Plate
3	1	2370101	Thumb Screw
4	1	2371718	Lockwasher-1/4" Zinc
■ Includes 1-4	1	2990100 2990101	Slide/Base Plate Assembly MKA-42 Slide/Base Plate Assembly MKA-52/62
	12	2500000	Screw 1/4-20 x 2 1/4" PPH SS
	6	2073408	Screw 1/4-20 x 7/8" PPH SS
	6	2261713	Washer-1/4 Flat 18-8 SS
	12	2014800	Nut
■	1	2994829	Bag Assembly, Hardware

### Installation Instructions:

- A: For Maxxum motors use (6) 1/4" x 2 1/4" Screws and (6) Nuts to fasten the motor mount to the Slide Plate [1].

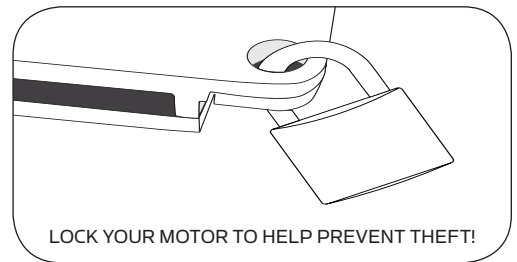
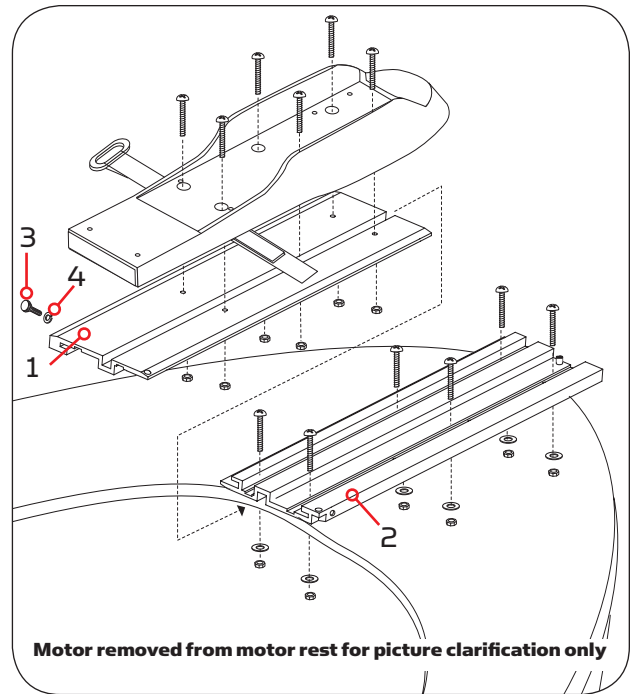
B: For Fortrex, Edge, and other compatible motors use (6) 1/4" x 7/8" Screws and (6) Nuts to fasten the motor mount to the slide plate.

**Note:** Place the stabilizer strap (if included with your motor) between the motor mount and the Slide Plate. For full function the strap should be located between the back and middle pairs of mounting screws as shown in the illustration

**Note:** Slide Plate must be oriented as shown in the illustration.
- Slide the Base Plate into the Slide Plate and secure it with the Thumb Screw [3] and Washer [4].
- With the motor fully deployed (lower unit in the water) set the bracket/motor on the bow of your boat and check for proper clearance to the gunnel of the boat. (The motor, as it is lowered into the water or raised into the boat, must not encounter any obstructions.) Mark the side edges and rear of the Base Plate on the bow of your boat.

**Warning:** For motors with Lift Assist (Fortrex, Riptide SF, Maxxum Pro, and Riptide Pro) the lift cylinder should be disengaged until installation is complete to prevent a possible risk of injury.
- Separate the Base Plate from the Slide Plate. Position the Base Plate on the marks on the bow of the boat to locate the mounting holes. Drill the holes out to 9/32".

**Note:** Mounting surface for Base Plate must be completely flat. Washers must be used to shim the Base Plate flat before the hardware is tightened. Slide Plate will not fit correctly unless the Base Plate is installed completely flat.
- Secure the Base Plate to the deck of the boat using (6) 1/4 x 2 1/4" Screws, (6) Washers and (6) Nuts.
- Slide the Slide Plate with the motor attached into the Base Plate. The Slide Plate slides in from the back end of the Base Plate. Once slid all the way forward, secure the Top Plate to the Base Plate using the Thumb Screw [3] and Lockwasher [4].
- Your motor is now mounted. Always check the thumb screw to verify that it is tight.



WARNING: This product contains chemicals known to the State of California to cause cancer and birth defects or other reproductive harm.



Discover other boat motors on our website.