



DeckHand™

Models: DH 15
DH 25



OWNER'S MANUAL

INSTRUCTIONS FOR DH-15

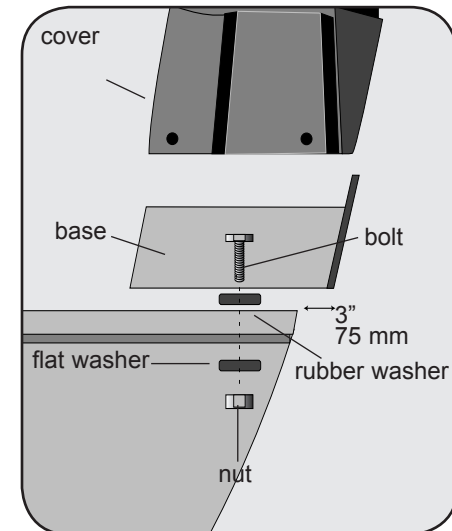
NOTE: Numbers in () are item numbers referring to parts list and diagram.

IMPORTANT: For proper operation, the DeckHand must be mounted on a level surface. Use the rubber washers (27) to create a level surface if necessary. On fishing boats without decks, DeckHand can be mounted on a hardwood platform and then attached to gunwhales.

1. Remove DeckHand cover (1) by removing screws, items (3) and (4).
2. Place the base (18) in your desired mounting location. Make sure the base extends a minimum of 3" over the edge of boat.
3. Mark at least 4 of the 6 pre-drilled bolt hole locations provided in your base for drilling. **Make sure there are no obstructions under the mounting surface prior to**

drilling. Drill through the marked holes using a $\frac{21}{64}$ " drill bit.

4. Once drilled, mount the base using the mounting hardware (bolts and nuts) provided. Use a minimum of four bolts (26) with 1" rubber mounting washers (27), placing the mounting washers between the base and the boat surface. If needed, two extra mounting washers are provided for insuring a level mounting surface. Tighten mounting hardware securely. Do not replace cover (1) at this time. See "Function Test" section.



Item	Part	Description
1	2370206	Cover DH-15 w/ decals
	2370207	Cover DH-25 w/ decals
3	2372121	Screw-#8-18x 1-1/2 Stallgrd (2 .ea)
4	2372111	Screw-#8-18x 3/4 Stallgrd (2 .ea)
■	2377803	Motor Assembly - DeckHand- Includes 6-13
8	350-154	Gear
9	990-077	Washer - Nylatron (3 .ea)
10	990-075	Washer - Steel (3 ea)
11	410-015	Cover- Housing
11a	337-015	Gasket
12	830-036	Screw - 10-32x.375 (4.ea)
13	788-030	Snap Ring
14	2223455	Screw-#10-32x1/2 (3 .ea)
14a	2261718	Washer- Lock Star #10 Ext Tooth 3.ea)
15	2377900	Spool includes 60' rope
16	2370000	Bearing-Spool
17	2263010	E-Ring 3/8 Dia Shaft
18	2371902	Base- Mounting E-Coat
19	2374010	Switch-Momentary Anchor
20	2372130	Screw-#4-40x3/4 PPH (2 .ea)
21	2373100	Nut-Con/Mom Swt Anchor (2 .ea)
22	2372700	Spring-Anchor
23	2372900	Grommet-Anchor Cover Short (2 .ea)
24	2372910	Grommet-Anchor Cover Long (2 .ea)
25	2376300	Wire- Routing Clip (2 .ea)
■	2994803	Bag Assembly (includes 26-30)
26	2153501	Bolt- Mounting 3500 w/stallgd (4 .ea)
27	2301720	Mounting Washer-Rubber (6 .ea)
29	2151726	Washer 5/16 STD SS (4 .ea)
30	2153100	Nut 5/16 (4 .ea)
31		See 2774805
32	2378000	Anchor-Upper Half (DH-15)
33	2378100	Anchor-Lower Half (DH-15)
34	2372100	Screw #8-18x5/8 (as required)
35	2372800	Keeper Block
36	2373600	Lock Pin-Anchor
38	2376700	Plug-Anchor
39	2374000	Switch-Control Anchor
43	2370707	Jumper Wire
44	2370607	Leadwire
45	2371610	Rope Guide
46	2372710	Spring-Rope Guide
47	2151700	Washer- Eye Shaft (2 .ea)
48	2372615	Cotter Pin 3/32x3/4 (2 .ea)
49	2378204	Circuit Breaker
50	2372031	Tubing- Heat Shrink
52	2371413	Connecting Cable 10ga
53	2998411	Davit Assembly
54	2992312	Large Roller Assembly
55	2992306	Small Roller Assembly
56	2991503	Sleeve Roller Assembly
57	2370820	Safety Chain Assembly
57a	2370806	Anchor Shackle
58	2992620	Safety Pin Assembly
59	2774805	Mounting Bolts and Nuts (4 each)
■	2994804	Bag Assembly -DH 18 (anc. plug + screws)

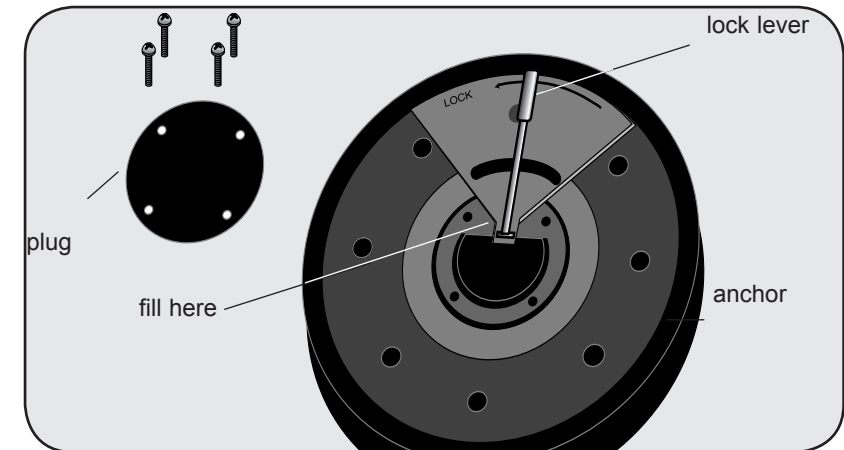
FILLING THE ANCHOR ON THE DH-15

Your DeckHand anchor must be filled with steel shot (not provided). It is recommended to use a shot size of #6 through #9. When filled with steel shot your anchor will weigh approximately 15 pounds.

1. Hold the anchor assembly upside down.
2. Fill the anchor with shot, pack shot manually to achieve a complete fill.
3. Once filled, place the plug (38) in position.
4. Install four of the screws provided (34). Do not over tighten screws.

LOCK LEVER OPERATIONS FOR THE DH-15

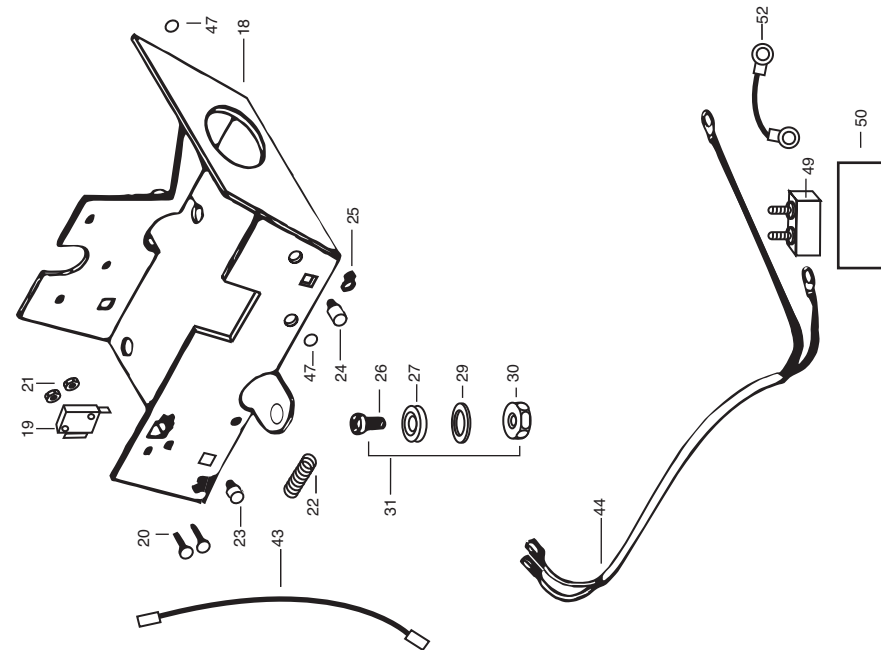
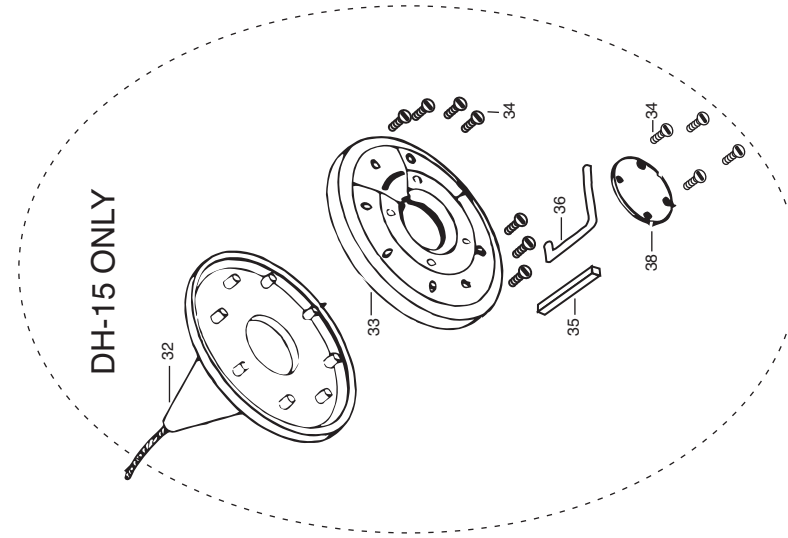
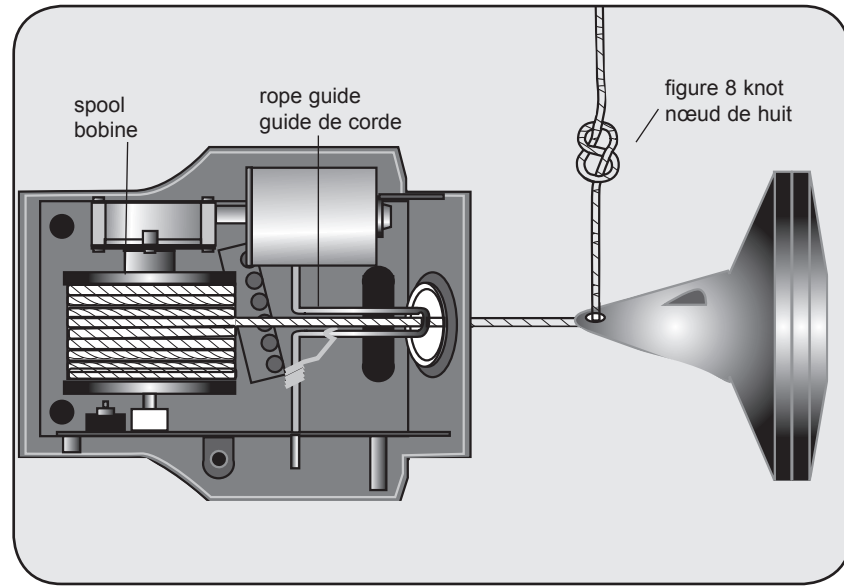
Your DeckHand is provided with a lock lever located on the bottom of your anchor. To operate, retract anchor into base and turn lock lever in direction of arrow to 'Lock' position. Lock lever provides convenient extra security on rough water and when trailering.



ATTACHING THE ANCHOR ON DH-15

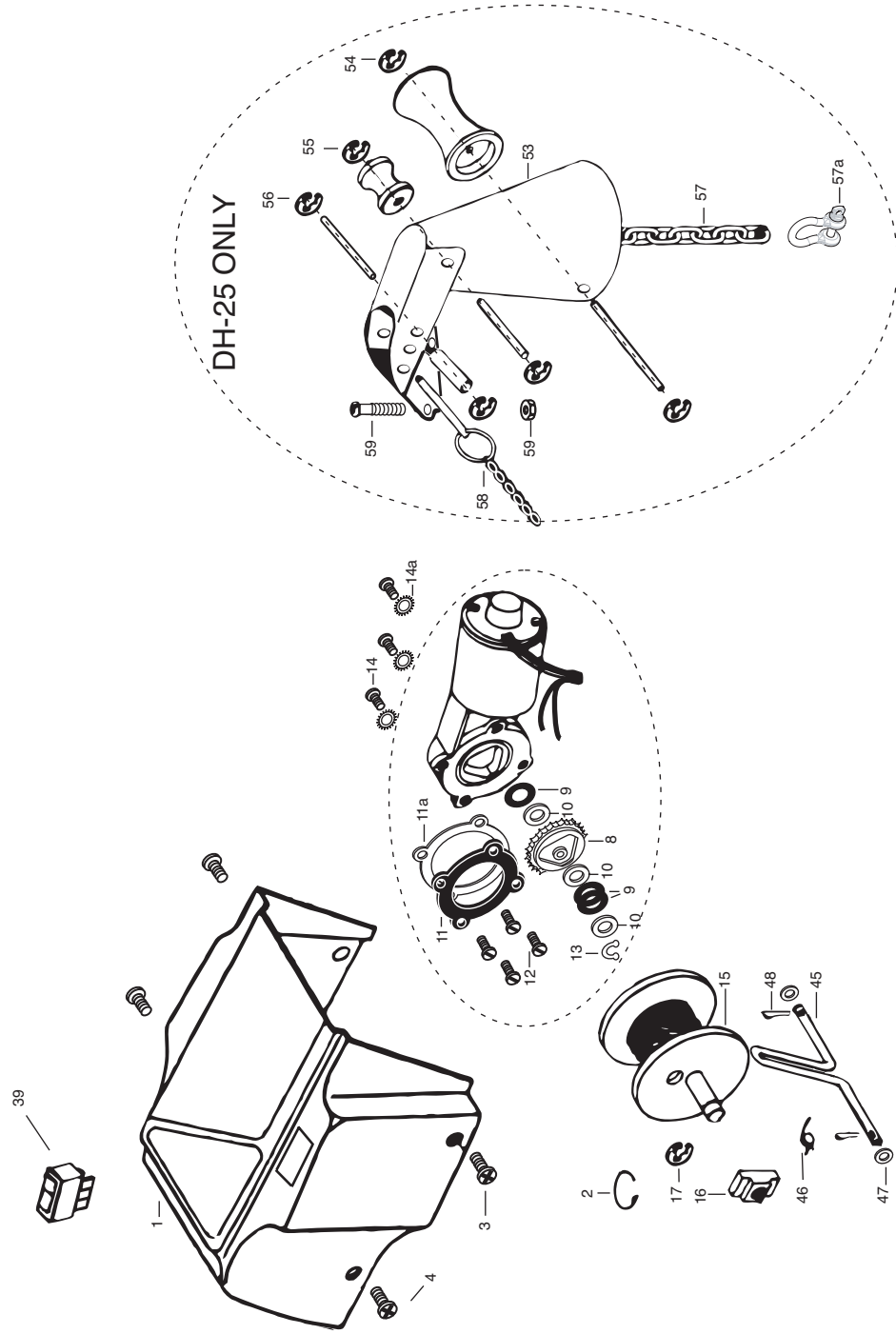
Your DeckHand Electric anchor winch is spooled with sixty-feet of 3/16" diameter rope. The use of smaller diameter or alternate style ropes is not recommended.

1. Release free end of rope from spool (15), unroll a minimum of three-feet from the spool.
2. Thread free end of rope through rope guide (45) then 2 1/2" diameter opening in front of base (18). Pull slack through opening.
3. Thread rope through hole in top of anchor. Pull rope through exit hole.
4. Tie a knot securely in end of rope such that rope will not pull through hole. A figure 8 knot is recommended. (See diagram below.)



This page provides MinnKota® WEEE compliance disassembly instructions. For more information about where you should dispose of your waste equipment for recycling and recovery and/or your European Union member state requirements, please contact your dealer or distributor from which your product was purchased.

Tools required but not limited to: Flat Head screw driver, Phillips screw driver, Socket set, Pliers, wire Cutters.

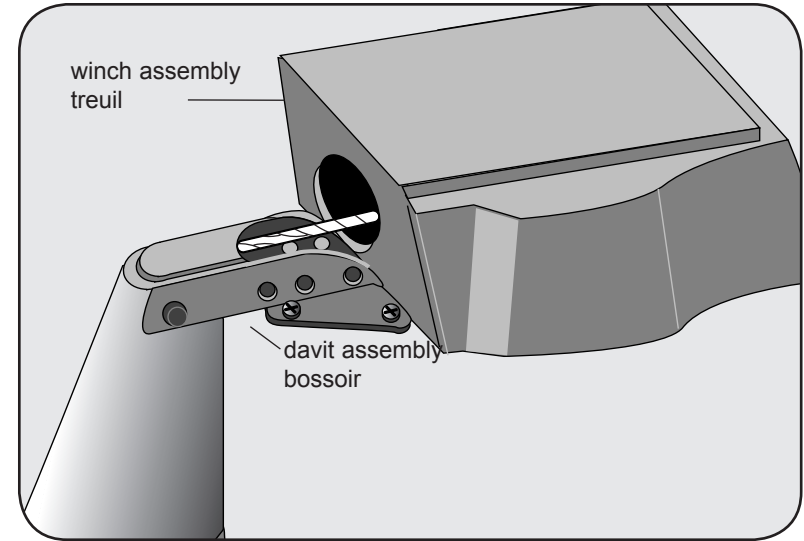


INSTRUCTIONS FOR DH-25

NOTE: Numbers in () are item numbers referring to parts diagram.

A. Winch and Davit mounted together

1. Remove DeckHand cover (1) by removing cover screws, items (3) and (4).
2. Place the base (18) and the davit (53) in your desired mounting location. Make sure that when the DeckHand is operating or in a stowed position, the anchor does not come in contact with the boat.
3. **Make sure there are no obstructions under the mounting surface prior to drilling.** Mark at least 4 of the 6 pre-drilled bolt hole location provided in your base for drilling. Also mark all 4 pre-drilled bolt hole locations provided in your davit for drilling. Drill through the marked holes in the base using a $2\frac{1}{64}$ " drill bit, and through the marked holes in the davit using $1\frac{7}{64}$ " drill bit.



NOTE: Do not install opp. Sleeve Roller (56) until after Davit (53) has been mounted to boat using the four mounting bolts provided.

4. Once drilled, mount the base using the mounting hardware (bolts, washers and nuts) provided with the DeckHand. Use a minimum of 2 of the four bolts (26) with 1" rubber mounting washers (27), placing the mounting washers between the base and the boat surface. If needed, two extra mounting washers are provided for insuring a level mounting surface. Also mount the davit using the mounting hardware provided (bolts and nuts). Tighten mounting hardware securely. Do not replace cover (1) to base at this time. See "Function Test" section.

B. Winch and Davit mounted separate

1. Remove Deckhand cover (1) by removing cover screws, items (3) and (4).
2. For remote mounting, place the base (18) and the davit (53) in your desired mounting location. Keep in mind when positioning the hardware, where the pulleys and rope guides will be located, if needed. After locating, make sure that when the DeckHand operates or is in a stowed position, the anchor does not come in contact with the boat and the anchor rope does not interfere with the oars or motors.
3. Mark at least 4 of the 6 pre-drilled bolt hole locations provided in your base for drilling. Also mark all 4 pre-drilled bolt hole locations provided in your davit for drilling. On boats with a deck or no opening in bow plate, mark a hole directly beneath the rear davit pulley for the anchor line to pass through if no other hole or opening is accessible.

MAINTENANCE

- After use - particularly in salt or brackish water, rinse unit in fresh water and wipe down unit with a damp cloth.
- For prolonged storage, lightly coat metal parts with silicone spray or similar product.
- Avoid spraying switch components with any cleaning, lubricating or moisture absorbing compounds. Check rope periodically for frays or cuts and replace if necessary.

TROUBLESHOOTING

1 Unit fails to operate or lacks power:

- Check battery charge and connections. Be sure terminals are clean and corrosion free. Use a fine grade of sandpaper or emery cloth to clean terminals.

• Check your batteries water level. Add water if needed.

If connections are good and battery has a full charge, obtain service as instructed.

2. Alternate Anchors:

- When using alternate anchors and davits insure that your anchor slides or rolls freely. Lubricate rollers or pulleys if necessary.

3. Anchor does not go down:

- Check lock lever.
- Check battery connections.

CONTROL SWITCH OPERATIONS

WARNING: Keep fingers clear of rope and base when operating. Do not operate in normal use with cover off.

Three position control switch has UP, DOWN and OFF positions. DOWN powers the anchor down. The gear motor automatically stops when anchor touches bottom. With the control switch in DOWN position, electronic anti- drag system lets out necessary slack to prevent anchor drag. The OFF position locks gear motor and rope. The UP position powers anchor up and retracts anchor into the DeckHand base. Releasing the control switch automatically switches to OFF and secures anchor and anchor rope.

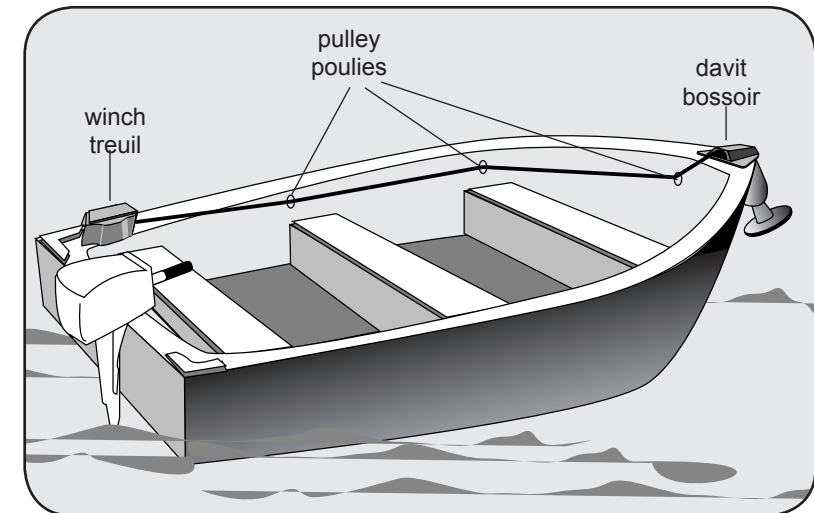
CIRCUIT BREAKER OPERATION

The power control circuitry and gear motor are protected by a manual circuit breaker. Should an operational situation occur where a prolonged overload is present the circuit breaker will disconnect the battery positive supply in approximately ten seconds. The circuit breaker needs to be manually reset by pushing the small black button on the side. Repeated tripping of the circuit breaker indicates an operational or equipment fault that requires correction.

Make sure there are no obstructions under the mounting surfaces prior to drilling. Drill through the marked holes made from base using a $2\frac{1}{64}$ " drill bit, through the marked hole made from davit using a $1\frac{7}{64}$ " drill bit. Also drill through the marked hole beneath the rear davit pulley with a $3/4$ " drill bit if such a hole is needed.

NOTE: Do not install opp. Sleeve Roller (56) until after Davit (53) has been mounted to boat using the four mounting bolts provided.

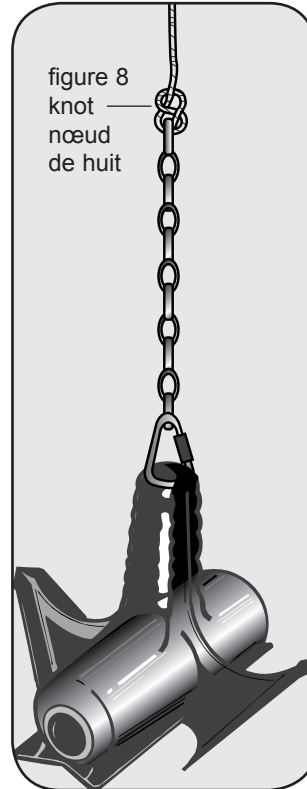
4. After drilling operations are complete, mount the base using the mounting hardware (bolts, washers and nuts) provided with your DeckHand. Mount the base using the bolts (26) and 1" rubber mounting washers (27). Place the mounting washer between the base and boat surface. If needed two extra mounting washers are provided for insuring a level mounting surface. Also mount the davit using the mounting hardware provided (bolts and nuts) Tighten base and davit hardware securely. Do not install cover (1) to base at this time. See "Function Test" section.



5. After base and davit have been fastened, determine location and attach type of pulleys needed. Although rope guides are not necessary, we recommend their use to keep anchor rope along the side of the boat and out of the way. The guides and pulleys are not furnished but are available at most marine dealers. Use as few as possible to keep line drag to a minimum.

ATTACHING THE ANCHOR ON DH-25

1. Release free end of rope from spool (15). Unroll a minimum of four feet from the spool.
2. Thread free end of rope through rope guide (45) then through 2 1/2" diameter opening in front of base (18). Also thread through davit (53) and pull slack through.
3. Thread rope through last chain link. Tie a knot securely in end of rope such that rope will not pull through chain link. A figure 8 knot is recommended.
4. Hook anchor chain connector through eye in anchor, thread connector closed and tighten. The CrabClaw anchor (pictured) is readily available at your Minn Kota dealer.



5. If your DeckHand does not operate properly through function test, recheck wire connections to insure proper hook-up. If your DeckHand operates properly through function test, replace cover and cover screws.

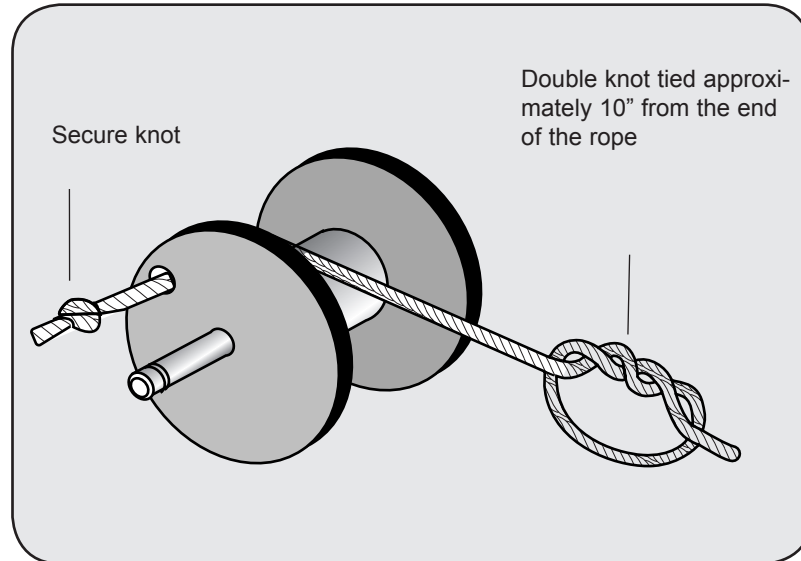
ROPE REPLACEMENT AND INSTALLATION

Spool and rope assemblies may be purchased direct from Minn Kota or authorized Minn Kota Service Centers. Should you decide to replace your own rope, it is recommended to use a 3/16" diameter diamond braid polyester or nylon rope.

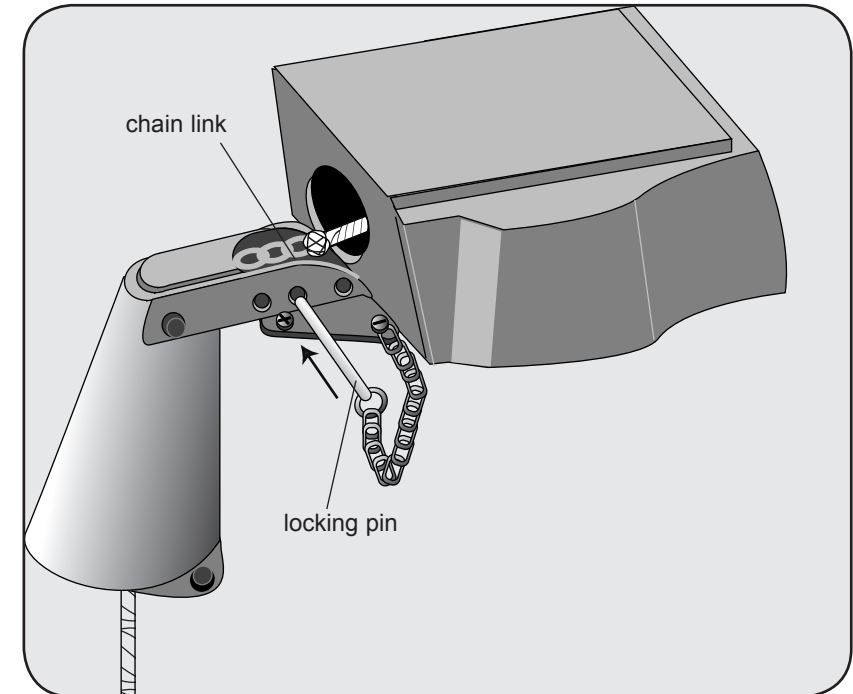
1. Remove existing rope.
2. Thread new rope through front opening in base (18) and then through rope guide (45).
3. Tie one double knot in new rope approximately ten-inches from end of rope as shown in diagram on previous page.
4. Thread end of new rope through spool as shown in the diagram and tie a secure knot in end of rope.

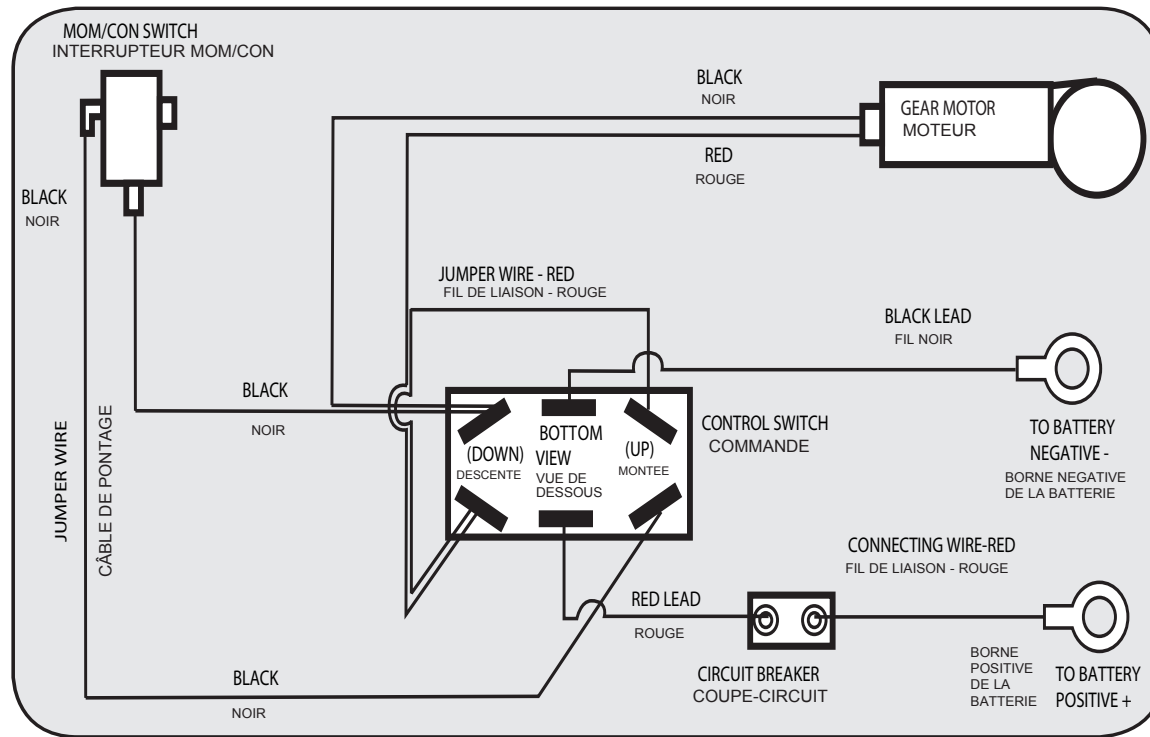
FUNCTION TEST

1. With attached anchor hanging over edge of boat, turn control switch to "UP" position. Anchor should retract into base on DH-15 or into davit on DH-25. Release control switch when anchor is fully seated in base.
2. Turn control switch to "DOWN" position. Anchor should lower automatically. Gear motor will shut off when anchor comes in contact with ground surface.
3. With control switch still in "DOWN" position, pull on rope. Rope should automatically feed out. This is your electronic anti-drag system.
4. Place control switch in "OFF" position with anchor still on ground and repeat pull test. Rope should not feed out. The control switch must be placed in the "OFF" position to prevent rope feed when anchored.

**LOCKING PIN OPERATION FOR DH-25**

1. Your davit is provided with a locking safety pin that is fastened to the davit. The pin is to be installed through both sides of the davit while passing through the chain link located on end of DeckHand rope. The locking pin provides extra security on rough water and when trailering.
2. Because of the variety of mounting positions available when winch and davit are mounted separately, some positions using pulleys will not allow the lock-pin to go through the anchor chain for a secure lock. In this instance, we suggest putting the anchor in the boat when trailering or on rough waters.





BATTERY CONNECTIONS

1. Center control switch in "Off" position.
2. Connect DeckHand leadwire to 12V battery. If additional leadwire length is needed, use a minimum of 10 gauge wire. Connect red (+) to positive (+) battery terminal. Black (-) to negative (-) battery terminal.

CAUTION:

- Improper polarity hook-up of battery leadwire could cause severe damage to gear motor.
- The DeckHand is provided with a sealed control switch and circuit breaker. Substituting switches or installing multiple switches other than those provided will void manufacturers warranty.