

MINN-KOTA®

DeckHand™

Model:
DH 25R

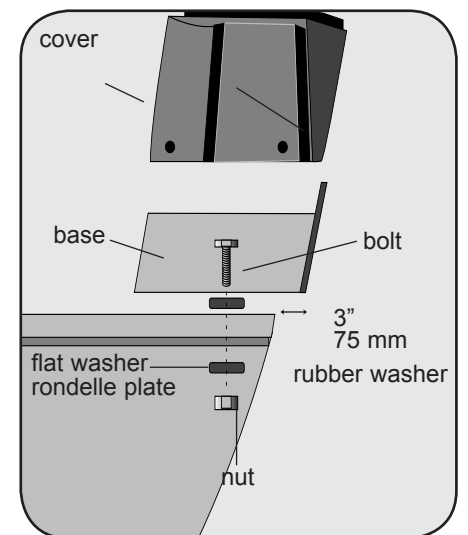
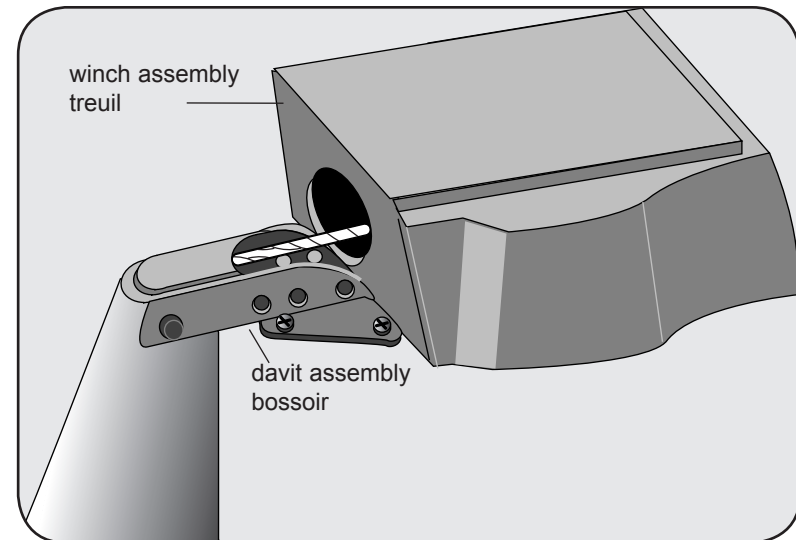


OWNER'S MANUAL

NOTE: Numbers in () are item numbers referring to parts diagram.

A. Winch and Davit mounted together

1. Remove DeckHand cover (1) by removing cover screws, items (3) and (4).
2. Place the base (18) and the davit (53) in your desired mounting location. Make sure that when the DeckHand is operating or in a stowed position, the anchor does not come in contact with the boat.
3. **Make sure there are no obstructions under the mounting surface prior to drilling.** Mark at least 4 of the 6 pre-drilled bolt hole location provided in your base for drilling. Also mark all 4 pre-drilled bolt hole locations provided in your davit for drilling. Drill through the marked holes in the base using a $2\frac{1}{64}$ " drill bit, and through the marked holes in the davit using $1\frac{7}{64}$ " drill bit.

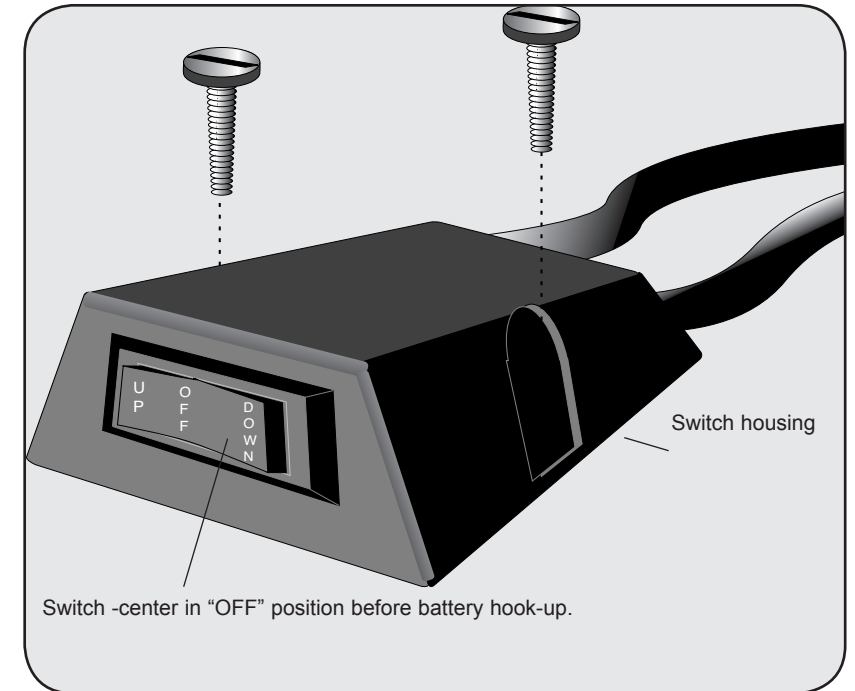


Item	Part	Description
1	2370209	Cover DH-25R
2	2303005	Pig Ring
3	2372121	Screw-#8-18x 1-1/2 Stallgrd (2 .ea)
4	2372111	Screw-#8-18x3/4 Stallgrd (2 .ea)
■	2377803	Motor Assembly - DeckHand- Includes 6-13
6	2375400	Shrink Tube 1/4x1-3/4 (2 .ea)
8	350-154	Gear
9	990-077	Washer - Nylatron (3 .ea)
10	990-075	Washer - Steel (3 .ea)
11	410-015	Cover- Housing
11a	337-015	Gasket
12	830-036	Screw - 10-32x.375 (4.ea)
13	788-030	Retaining Ring
14	2223455	Screw-#10-32x1/2 (3 .ea)
14a	2261718	Washer- Lock Star #10 Ext Tooth 3.ea)
15	2377900	Spool includes 60' rope
16	2370000	Bearing-Spool
17	2263010	E-Ring 3/8 Dia Shaft
18	2371900	Base- Mounting E-Coat
19	2374010	Switch-Momentary Anchor
20	2372130	Screw-#4-40x3/4 PPH (2 .ea)
21	2373100	Nut-Con/Mom Swt Anchor (2 .ea)
22	2372700	Spring-Anchor
23	2372900	Grommet-Anchor Cover Short (2 .ea)
24	2372910	Grommet-Anchor Cover Long (2 .ea)
25	2376300	Wire- Routing Clip (2 .ea)
■	2994803	Bag Assembly (includes 26-30)
26	2153501	Bolt- Mounting 3500 w/stallgd (4 .ea)
27	2301720	Mounting Washer-Rubber (6 .ea)
29	2151726	Washer 5/16 STD SS (4 .ea)
30	2153100	Nut 5/16 (4 .ea)
34	2372100	Screw, #8
39	2374000	Switch-Control Anchor
40	2376500	Switch Housing (DH- 25R)
41	2376510	Switch Plate
42	2372150	Screw-Switch Plate 6-20x1/2 (3 .ea)
43	2370700	Control Wire (DH-25R)
44	2370602	Leadwire (DH- 25R)
45	2371610	Rope Guide
46	2372710	Spring-Rope Guide
47	2151700	Washer- Eye Shaft (2 .ea)
48	2372615	Cotter Pin 3/32x3/4 (2 .ea)
49	2378204	Circuit Breaker
50	2372031	Tubing- Heat Shrink
52	2371412	Connecting Cable 14ga
53	2998411	Davit Assembly
54	2992312	Large Roller Assembly
55	2992306	Small Roller Assembly
56	2991503	Sleeve Roller Assembly
57	2370820	Safety Chain Assembly
57a	2370806	Anchor Shackle
58	2992620	Safety Pin Assembly
59	2774805	Mounting Bolts and Nuts (4 each)

SWITCH INSTALLATION

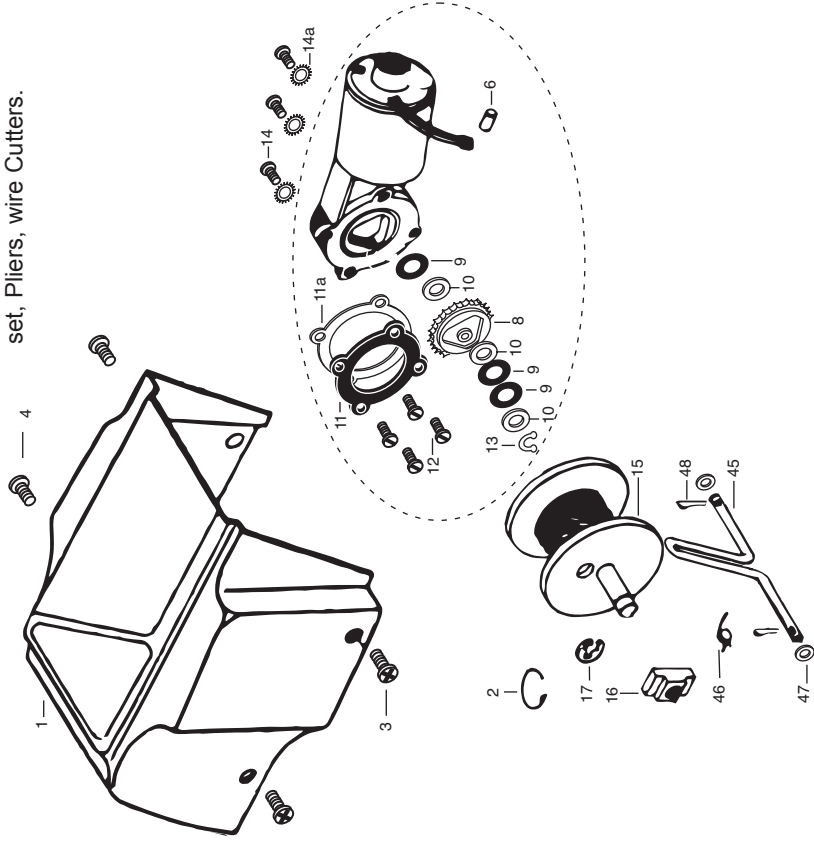
Your DeckHand control switch assembly (39) is equipped with an eighteen foot control wire, allowing convenient mounting almost anywhere in the boat.

1. Select a control switch mounting location. If wire routing or control switch mounting requires disconnecting of wires within switch housing (40), take special care to insure that proper reassembly is achieved- refer to wire diagram on page 11.
2. Securely attach switch housing assembly with the two screws (34) provided.



This page provides MinnKota® WEEE compliance disassembly instructions. For more information about where you should dispose of your waste equipment for recycling and recovery and/or your European Union member state requirements, please contact your dealer or distributor from which your product was purchased.

Tools required but not limited to: Flat Head screw driver, Phillips screw driver, Socket set, Pliers, wire Cutters.

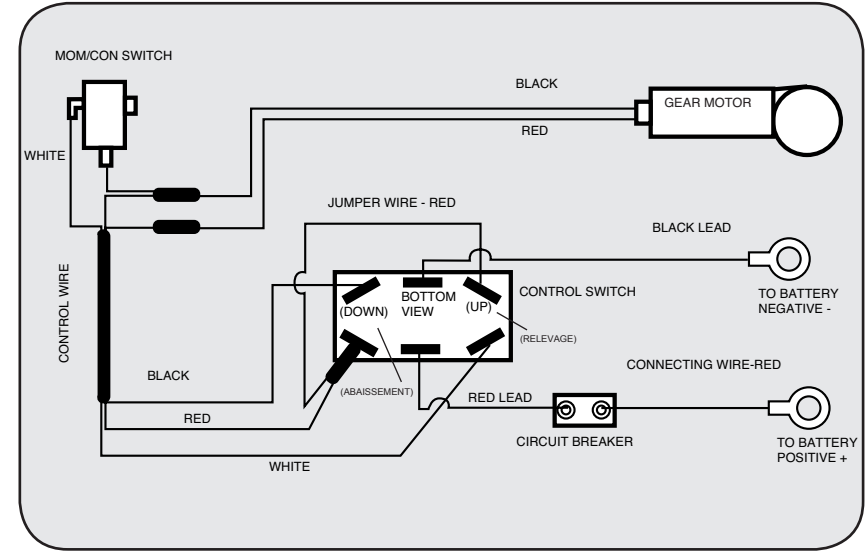


BATTERY CONNECTIONS

1. Center control switch in "Off" position.
2. Connect DeckHand leadwire to 12V battery. If additional leadwire length is needed, use a minimum of 10 gauge wire. Connect red (+) to positive (+) battery terminal. Black (-) to negative (-) battery terminal.

CAUTION:

- Improper polarity hook-up of battery leadwire could cause severe damage to gear motor.
- The DeckHand is provided with a sealed control switch and manual resettable circuit breaker. Substituting switches or installing multiple switches other than those provided will void manufacturers warranty.



CONTROL SWITCH OPERATIONS

WARNING: Keep fingers clear of rope and base when operating. Do not operate in normal use with cover off.

Three position rocker control switch has UP, DOWN and OFF positions. DOWN powers the anchor down. The gear motor automatically stops when anchor touches bottom. With the control switch in DOWN position, electronic anti-drag system lets out necessary slack to prevent anchor drag. The OFF position locks gear motor and rope. The UP position powers anchor up and retracts anchor into the DeckHand base. Releasing the control switch automatically switches to OFF and secures anchor and anchor rope.

CIRCUIT BREAKER OPERATION

The power control circuitry and gear motor are protected by a manual resettable circuit breaker. Should an operational situation occur where a prolonged overload is present the circuit breaker will disconnect the battery positive supply in approximately ten seconds. The circuit breaker needs to be manually reset by pushing the small black button on the side. Repeated tripping of the circuit breaker indicates an operational or equipment fault that requires correction.

MAINTENANCE

- After use, rinse unit in fresh water and wipe down unit with a damp cloth. This unit is not intended for saltwater use. Saltwater use will void your warranty.
- For prolonged storage, lightly coat metal parts with silicone spray or similar product.
- Avoid spraying switch components with any cleaning, lubricating or moisture absorbing compounds. Check rope periodically for frays or cuts and replace if necessary.

TROUBLESHOOTING

1. Unit fails to operate or lacks power:
 - Check circuit breaker, be sure button is pressed. If circuit breaker is tripped, investigate the cause of the problem before resetting.
 - Check battery charge and connections. Be sure terminals are clean and corrosion free. Use a fine grade of sandpaper or emery cloth to clean terminals.
 - Check your batteries water level. Add water if needed. If connections are good and battery has a full charge, obtain service as instructed.
2. Alternate Anchors:
 - When using alternate anchors and davits insure that your anchor slides or rolls freely. Lubricate rollers or pulleys if necessary.
3. Anchor does not go down:
 - Check circuit breaker, be sure button is pressed.
 - Check battery connections.