

MotorGuide®

2018



Built to Earn You Bragging Rights.

MotorGuide knows that your trolling motor should be the least of your worries when you hit the water. In fact, we believe it should help you catch more fish. That’s why we’re committed to building trolling motors that make your precious time on the water as rewarding as possible.

We do that by making quiet motors, so you can maneuver stealthily and confidently in pursuit of fish. We focus on steering systems that are precise and responsive, so you can stay in control—even in challenging conditions. And we’re passionate about making durable, easy-to-use motors that you can rely on.

Look over our complete lineup and find the motor that’s best for your boat and for how you fish. And then put it to work to bring in the catch—and the bragging rights.

We have the motor for how you fish.

We’re sure to have the power, mount location, and steering type that matches your boat and fishing style.

X Series Bow Mount Motors

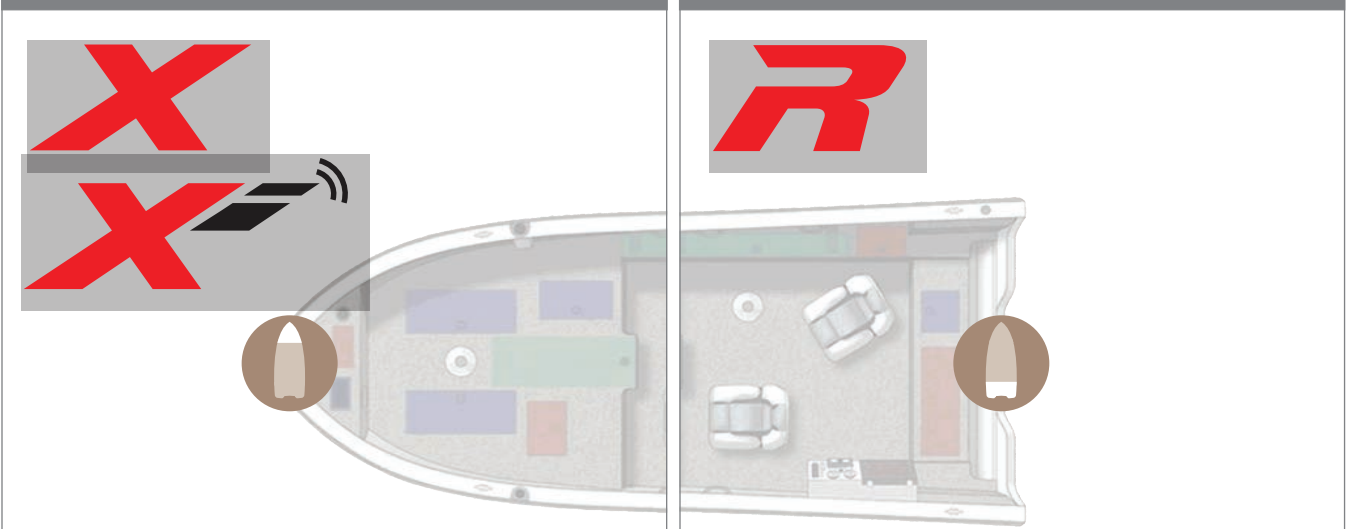








Foot-control models come standard with Variable Ratio Steering (VRS) for reduced torque steering and improved boat control to help you stay on fish, even in challenging conditions. All are built with robust components for quiet, reliable operation. There are also several hand-control models to meet your needs.

Xi Series Bow Mount Motors

Wireless capability right out-of-the box for versatility and control. Available with Pinpoint® GPS and connectivity to compatible Lowrance® displays for enhanced functionality. Best-in-class steering, quiet operation, and ease of use.

R Series Transom Mount Motors

Available in a wide range of power levels and speed control options with performance and value in mind.

Bow Mount		Transom Mount	
			
Freshwater	Saltwater	Freshwater	Saltwater
 <i>Hand Control</i> X3 page 16 X5 page 16	 <i>Hand Control</i> X3 page 22 X5 page 23	 <i>Hand Control</i> R3 page 17 R5 page 17	 <i>Hand Control</i> R3 page 24 R5 page 25
 <i>Foot Control</i> X3 page 12-13 X5 page 14-15	 <i>Wireless</i> Xi3 page 20 Xi5 page 21	 <i>Foot Control</i> Bulldog page 18	
 <i>Wireless</i> Xi3 page 8-9 Xi5 page 10-11			

Selecting Your Trolling Motor

Trolling Motor Power Needs

A general guideline is 2 lbs. thrust for every 100 lbs. of total weight (boat, fuel, occupants, gear). If you fish in wind or strong current, add 10 lbs. thrust.

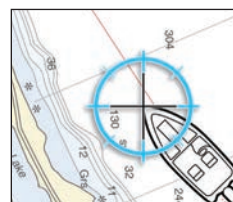
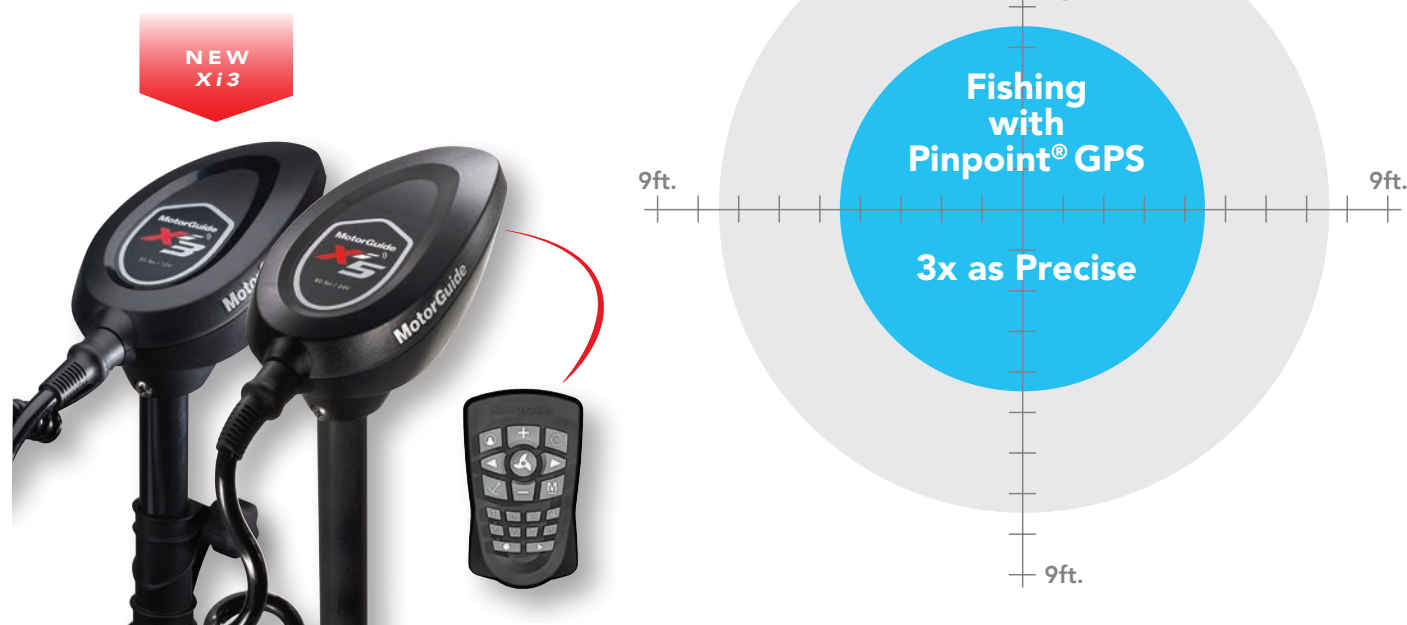
Determine Shaft Length

Measure from the top of the bow where the motor is mounted to the water line. Then add 20” to this measurement. The shaft length should be equal to or greater than this sum.

Pinpoint®_{GPS}

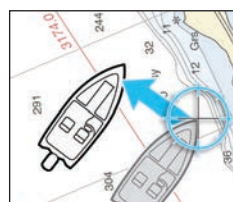
Most Accurate GPS. Period.

Get serious about your game with the industry's most accurate GPS. We've compared, Pinpoint® GPS is proven to be **3x as precise** as our competition. With a tighter hold on your anchor point, Pinpoint® GPS on Xi Series motors lets you focus on what really matters – catching fish. The competition likes to say they run circles around us, and for once, they're right.



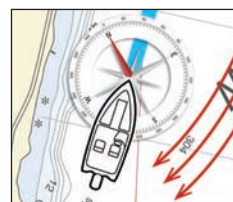
ANCHOR

When at a desired spot, you can lock in the GPS coordinate and remain "anchored" within four feet, even in wind and current.



JOG

While in Anchor mode, use the Jog feature to shift your position five feet in any direction, as often as you want.



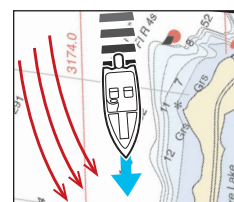
HEADING LOCK

Choose a heading and Pinpoint® GPS keeps you on a straight-line course until Heading Lock is released.



ROUTE RECORD/PLAYBACK

Record and store eight routes up to four miles long. Return to and replay a stored route from anywhere.



CRUISE CONTROL

While underway using Heading Lock or Route Playback, Cruise Control will maintain a constant boat speed.

LOWRANCE®

The Ultimate in Boat Control.

Connect our Xi Series motors with Pinpoint® GPS to compatible Lowrance® displays for the ultimate in boat control. This seamless technology interface makes it easy to maximize Pinpoint® GPS functionality and create new fishing strategies.

- There's no limit to the number of waypoints you can save, which makes it easy to hit your favorite spots.
- Program your favorite trolling routes, set your speed, and fish like a pro.
- Target promising locations by using real-time data on structure and more.



Trolling Motor Status at a Glance and Enhanced Anchor Mode Functionality



Use Sonar History to Trackback and Target Fish or Structure



Follow Depth and Structure with Programmable Routes

SYSTEM REQUIREMENTS



Requires MotorGuide Pinpoint® GPS Gateway Kit (8M0092085)

Requires existing NMEA 2000® network or MotorGuide NMEA 2000® Starter Kit (8M0107522)

VARIABLE RATIO STEERING (VRS)



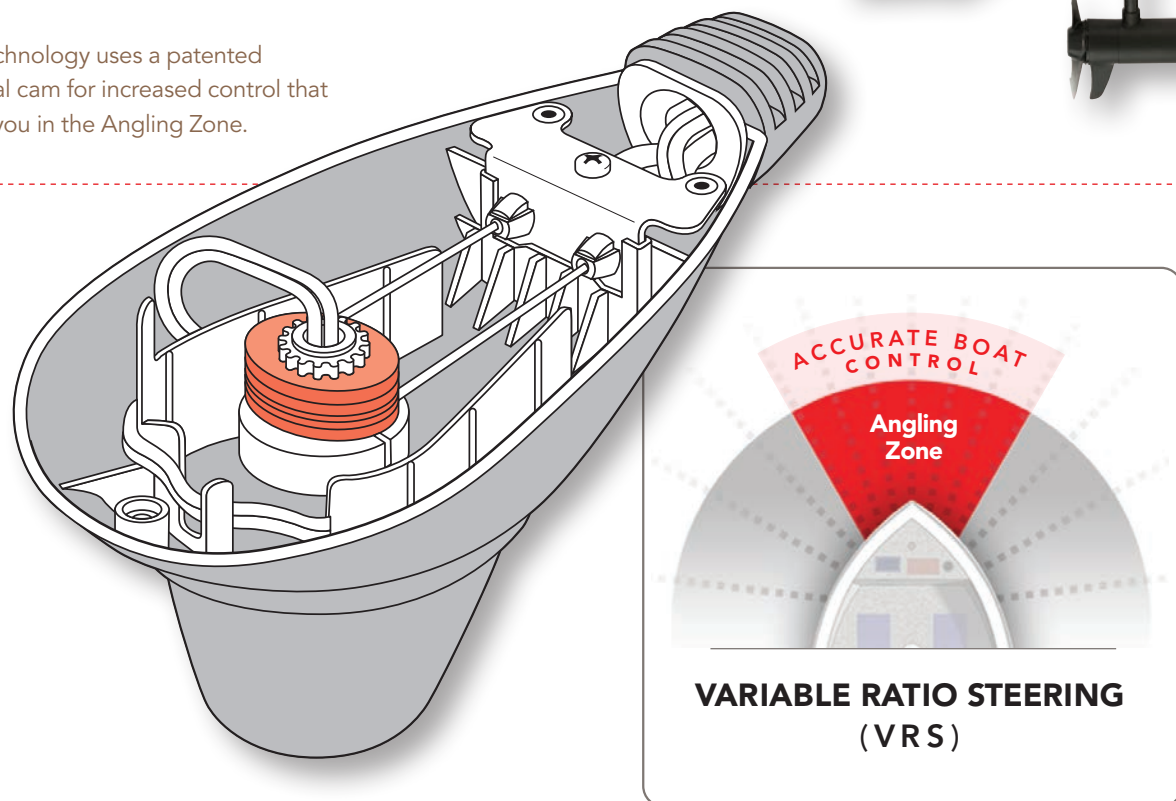
Only from
MotorGuide.

Fight the Fish—Not Your Trolling Motor.

The X Series foot-control motors feature patented Variable Ratio Steering (VRS) technology that makes it easy to position your boat in challenging conditions like wind, rough water, and heavy cover that typically create problems from torque steering. VRS keeps you in control, so you can fight the fish, instead of the motor.



VRS technology uses a patented elliptical cam for increased control that keeps you in the Angling Zone.

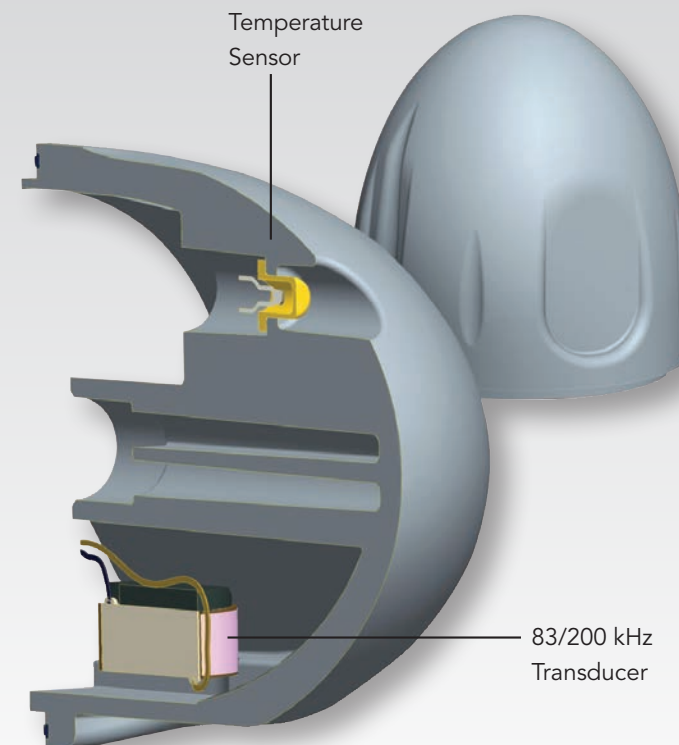


SONAR / DIGITAL



Unrivalled Sonar Performance.

Our built-in 83/200 kHz sonar transducer delivers industry-leading clarity and detail, so you can pinpoint more fish and structure. It has an integrated temperature sensor and epoxy-potted nose cone for maximum protection. Compatibility with most leading sonar brands is easy with our Sonar Adapter cables.



Run the Digital Difference.

Smooth and precise variable speed control from 0% - 100% throttle and extended battery life (up to five times longer) are two reasons why more anglers are choosing motors with our Digital Power Management technology. Digital's highly efficient, state of the art components run at lower temperatures, which means more thrust to the motor. Plus, smart safeguards protect the motor when operating under severe conditions.



NEW



WIRELESS / Xi3

Xi3

Locked, Loaded, and Ready to Stay on Fish.

There are plenty of reasons to fish with the new Xi3. For starters, it has wireless control out of the box—so there's no need for an expensive add-on. Right from the start you'll be fishing from anywhere on the boat with the convenient hand-held remote. You'll also get best-in-class quiet operation that's up to **40% quieter** than the leading competitor. With our SecureStep system, stowing and deploying the Xi3 is safe and easy. Releasing the motor from its locked position, and raising it to stow and go, takes just a single step on the release lever from a comfortable standing position.



Large release lever triggers both stow and deploy functions from a standing position for easy and safe operation. Visual and audible cues indicate when the motor is locked in the stowed position.



Available Thrust (lbs.):
45, 55, 70

Speed Control:
Digital Variable

Shaft Length (in.):
48, 54, 60

Pinpoint[®] GPS

DIGITAL



Compact hand-held remote controls Xi3 from anywhere on the boat. A wireless foot pedal is available as an accessory.



LED status indicators help you monitor four key motor functions at a glance, including three levels of battery life.

**Pinpoint[®] GPS**

Available Pinpoint[®] GPS navigates your boat so you can focus on fishing. Features include Anchor, Jog, Heading Lock, Route Record, and Cruise Control.



For the ultimate in boat control, connect Xi3 with Pinpoint[®] GPS to compatible Lowrance[®] displays and fish like never before.





WIRELESS / Xi5



Built to Satisfy Control Freaks.

Whether you're fishing in big water or navigating strong river currents, the Xi5 is up to the job. It's our most precise and responsive motor—and the **quietest on the market**. So you won't worry about spooking fish. The standard foot pedal, or optional hand-held remote, makes it easy to fish from anywhere on the boat. Our SecureStep system makes stowing and deploying safe and easy. It just takes one step on the release lever from a comfortable standing position.

To up your game, add the unmatched accuracy of Pinpoint® GPS. Then connect seamlessly to compatible Lowrance® displays for more advanced features and functionality. The proven Xi5 is all about helping you take control of your fishing strategies.



Available Thrust (lbs.):
55, 80, 105
Speed Control:
Digital Variable
Shaft Length (in.):
45, 48, 54, 60, 72



**72" Shaft
Now Available**

DURABLE LOWER UNIT
is constructed of solid steel
and aluminum with a powder
coat finish.



Wireless foot pedal for outstanding control from anywhere on the boat. Steering is the quietest and most responsive available, with 50% faster rotation than the competition.



A unique dual stow cradle design guides and secures the motor into the stowed position. A secondary safety catch prevents the motor from deploying and striking the boat.



LED status indicators help you monitor four key motor functions at a glance, including three levels of battery life.

Pinpoint® GPS



Available Pinpoint® GPS navigates your boat so you can focus on fishing. Features include Anchor, Jog, Heading Lock, Route Record, and Cruise Control.



For the ultimate in boat control, connect Xi5 with Pinpoint® GPS to compatible Lowrance® displays and fish like never before.

"The Xi5 is the standard for big-water walleye fishermen."

— Keith Kavajecz, professional angler
and host of The Next Bite





X3

The Performance and Value Standard.

The rugged X3 is constructed with durable components and is loaded with premium features, like our patented Variable Ratio Steering (VRS) and available Digital Power Management technology for smooth operation and longer battery life. The X3's winning combination of performance and value make it a popular choice for serious anglers.



Available Thrust (lbs.):
45, 55, 70
Speed Control:
5 Speed, Digital Variable
Shaft Length (in.):
36, 45, 50

DIGITAL



ERGONOMIC, heel-toe foot pedal is easy to use.



Durable and reliable with a rigid aircraft-grade aluminum mount and stainless steel bushings in key wear areas, a rugged composite inner shaft, and a large-diameter stainless steel outer shaft.



Quiet on the water with a composite locking pin that maintains a tight fit with the mount. Composite bushings in key areas also reduce noise while operating and during stowing and deploying.



Foot control models feature a lighted steering indicator illuminated with LEDs. (Digital models only)



Only from MotorGuide.

Patented Variable Ratio Steering (VRS) makes it easy to accurately position your boat, even in wind, rough water, and heavy cover that typically create torque steering problems. With VRS, you can stay in position and fight the fish, instead of your trolling motor.



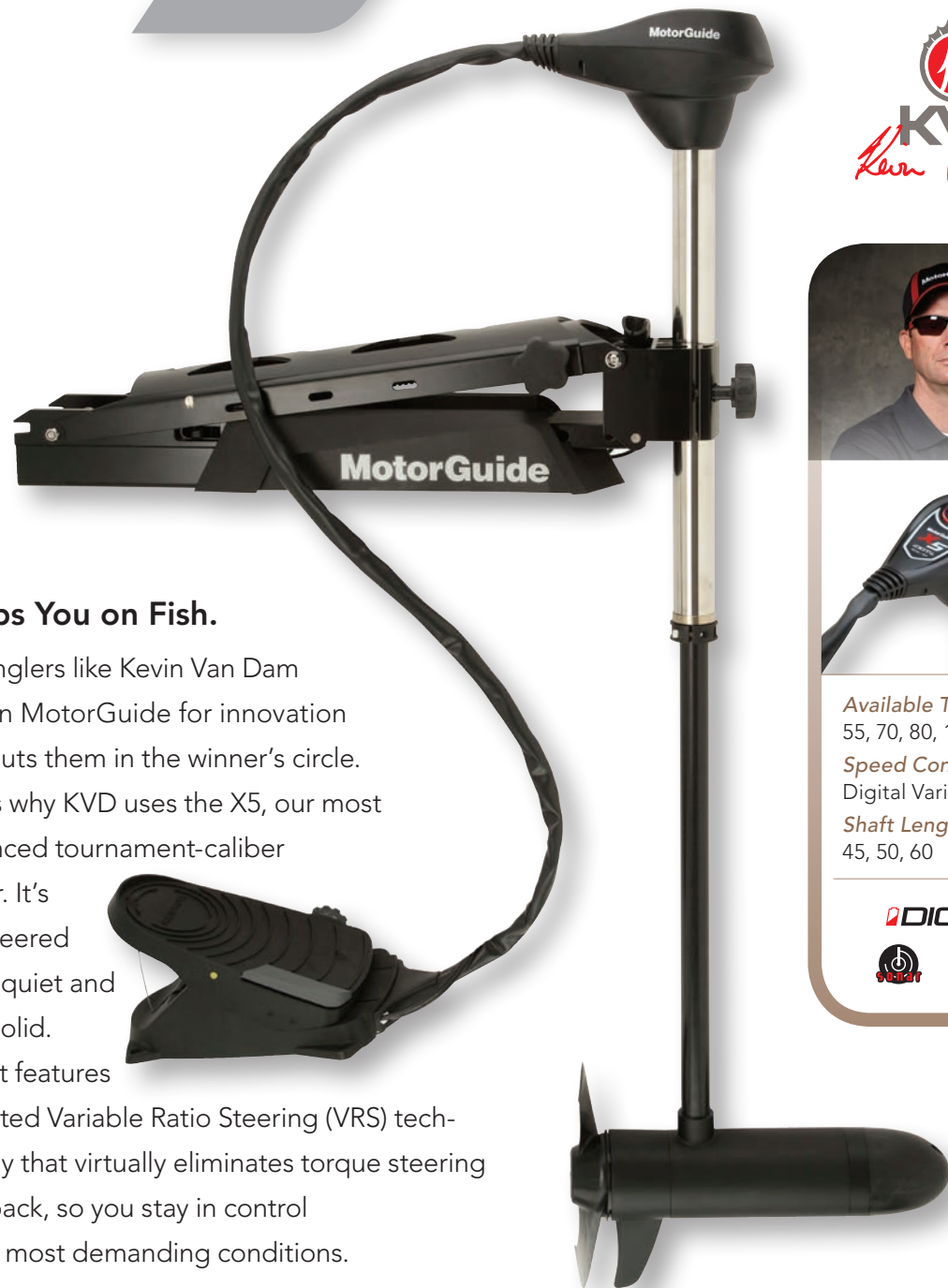
VARIABLE RATIO STEERING (VRS)





FOOT CONTROL / X5

X5



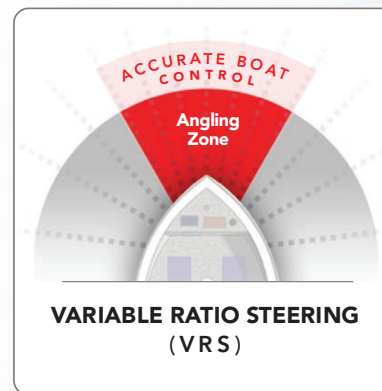
Available Thrust (lbs.):
55, 70, 80, 105

Speed Control:
Digital Variable

Shaft Length (in.):
45, 50, 60

Keeps You on Fish.

Pro anglers like Kevin Van Dam rely on MotorGuide for innovation that puts them in the winner's circle. That's why KVD uses the X5, our most advanced tournament-caliber motor. It's engineered to be quiet and rock solid. Plus, it features patented Variable Ratio Steering (VRS) technology that virtually eliminates torque steering feedback, so you stay in control in the most demanding conditions.



Only from MotorGuide.

Patented Variable Ratio Steering (VRS) makes it easy to accurately position your boat, even in wind, rough water, and heavy cover that typically create torque steering problems. With VRS, you can stay in position and fight the fish, instead of your trolling motor.



Shock-absorbing polymer washers, and composite locking pin and bushings make the X5 quiet on the water.



Wide breakaway mount, oversized stainless steel outer shaft, and premium composite inner shaft for strength and durability.



Foot control models feature a lighted steering indicator illuminated with LEDs. (Digital models only)



X3HAND CONTROL / **X3-X5**

Available Thrust (lbs.):
45, 55, 70
Speed Control:
5/2, Digital Variable
Shaft Length (in.):
50

DIGITAL

Performance and Value.

- Twist handle extends for improved control
- Composite shaft is guaranteed for life
- Quiet 3-Blade Machete prop

Twist-tiller operation with ergonomic extending handle.



The powerful **new X5** moves your boat where you want, when you want, so you can stay on track. And its rugged construction lets you move in and out of those treacherous hot spots with confidence. Just be sure to have your net ready.

HAND CONTROL / **R3-R5****R3**

Durable lower units on the X and R Series are constructed of solid steel and aluminum with a powder coat finish.

A Versatile Performer.

- Classic twist-tiller operation
- Reversible motor head for bow or backtrolling operation
- Tough aluminum seven-position transom mount

The **new R5** offers the most power in a transom mount motor, so you can fish with a bold new attitude. Plus, Digital technology delivers the power smoothly—and keeps you on the water longer. Just think about all the places the new R5 will take you.



Available Thrust (lbs.):
30, 40, 45, 55
Speed Control:
5/2, Digital Variable
Shaft Length (in.):
30, 36, 42

DIGITAL

Power to Spare, with Digital Control.

- Rigid, wide-stance aluminum mount
- Digital Power Management for long battery life
- Quiet 3-Blade Machete prop



Available Thrust (lbs.):
80
Speed Control:
Digital Variable
Shaft Length (in.):
50

DIGITAL

Power that Works Overtime.

- New robust transom mount design
- Reversible motor head for bow or backtrolling operation
- Digital Power Management for long battery life



Available Thrust (lbs.):
70, 80, 105
Speed Control:
Digital Variable
Shaft Length (in.):
42

DIGITAL



Bulldog

Small Boat Workhorse.

The Bulldog is specialized for small boat, transom mount applications. It has plenty of power to get the job done whether you're fishing, or just motoring around on your favorite lake.

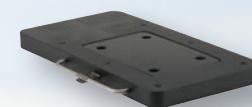


Versatile transom mount can be modified for backtrolling from the bow

Pontoon

Pontoon Perfect.

With a MotorGuide moving your pontoon, you can kick back and enjoy the ride. Our pontoon-specific motors feature Digital Power Management, so you'll get the maximum run time from your battery.



Quick release bracket (8M0120717, pg 27) makes it easy to remove the Xi3.



DIGITAL
POWER MANAGEMENT

Digital Power Management extends battery life up to five times, so you can run longer. Plus, the variable speed control is smooth and precise.

NEW



WIRELESS / Xi3



Locked, Loaded, and Ready to Stay on Fish.

The new Xi3 is the latest in the Xi Series. It's wireless out of the box, so you're immediately in control from anywhere on the boat. You'll be free to move around to scan the flats, or find the best position for casting. And during a long day of fishing, you'll really appreciate our SecureStep system, which makes stowing and deploying safe and easy. Releasing the motor from its locked position, and raising it to stow and go, takes just a single step on the release lever from a comfortable standing position. You'll also get best-in-class quiet operation that's up to **40% quieter** than the competition.



Large release lever triggers both stow and deploy functions from a standing position. Visual and audible cues indicate when the motor is locked in the stowed position.



Compact hand-held remote controls Xi3 and Xi5 from anywhere on the boat. A wireless foot pedal is available as an accessory.



Xi Series shafts are made of a premium composite material with a lifetime warranty. Lower units are protected with a proprietary three-coating process to withstand corrosion.



Available Thrust (lbs.):
55, 70
Speed Control:
Digital Variable
Shaft Length (in.):
48, 54, 60

Pinpoint[®]GPS**DIGITAL**

WIRELESS / Xi5



Designed to Give You an Edge.

Anglers from the bayous to the Keys are putting the proven Xi5 to work. Our most precise and responsive motor is the **quietest on the market**. Stowing and deploying is safe and easy with our SecureStep system. It only takes one step on the release lever from a comfortable standing position to unlock the motor. Xi5 packs plenty of power for moving your boat, while Digital Power Management technology ensures you can stay out for the long haul.



Available Thrust (lbs.):
55, 80, 105
Speed Control:
Digital Variable
Shaft Length (in.):
48, 54, 60, 72

Pinpoint[®]GPS**DIGITAL****Pinpoint[®]GPS**

Available Pinpoint[®] GPS navigates your boat so you can focus on fishing. Features include Anchor, Jog, Heading Lock, Route Record, and Cruise Control.

For the ultimate in boat control, connect Xi Series with Pinpoint[®] GPS to compatible Lowrance[®] displays and fish like never before.



LED status indicators help you monitor four key motor functions at a glance, including three levels of battery life.

**72" Shaft
Now Available**



HAND CONTROL / X3

X3**Performance and Value Leader.**

The X3 is a versatile everyday performer that quietly gets the job done. You can count on its rugged construction and unbreakable composite shaft to take you in and out of the tough spots. And the smooth-operating Digital Power Management technology extends battery life up to five times, so you can plan on staying out longer in pursuit of your favorite fish.



Classic twist-tiller operation and ergonomic extending handle for added control and comfort.



Rigid wide-stance mount is made of aircraft-grade aluminum alloy with composite bushings in key wear areas for durability and quiet operation.



Shaft is made of a premium composite material with a lifetime warranty. Lower unit is protected with a proprietary three-coating process to withstand corrosion.



Available Thrust (lbs.):
55, 70
Speed Control:
Digital Variable
Shaft Length (in.):
50

DIGITAL**TWO YEAR WARRANTY****NEW**

HAND CONTROL / X5

**X5****Power to Spare, with Digital Control**

The new X5 continues MotorGuide's legacy of building powerful and smooth-operating saltwater motors that you can count on for top performance in the harshest conditions. The X5 has the available thrust to move you over long stretches on the flats, whether you're running a skiff or a big bay boat. And with Digital Power Management technology extending the battery life, you can plan on spending more time fishing. Power, refinement, and durability. It's what you'd expect from the company that invented saltwater-specific motors.



A robust and rigid wide-stance mount is made of aircraft-grade aluminum alloy with composite bushings in key wear areas for durability and quiet operation.



Available Thrust (lbs.):
80, 105
Speed Control:
Digital Variable
Shaft Length (in.):
50, 60

DIGITAL**TWO YEAR WARRANTY****DIGITAL**
POWER MANAGEMENT

Digital Power Management extends battery life up to five times, so you can run longer. Plus, the variable speed control is smooth and precise.



HAND CONTROL / R3

R3

A Versatile Performer.

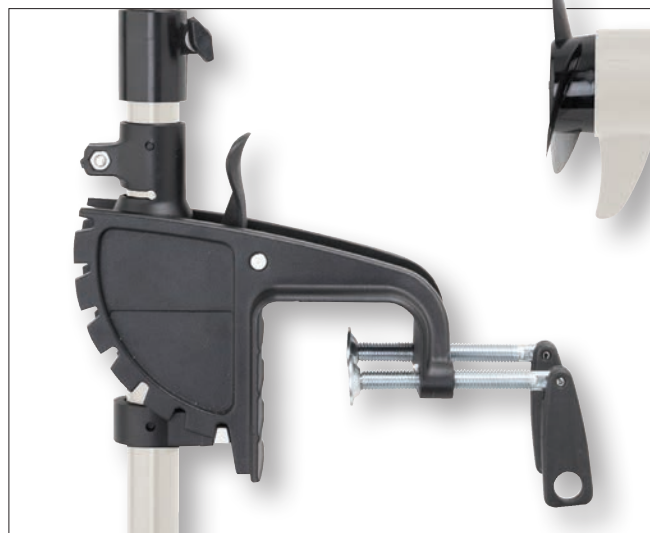
The R3 gets the job done for anglers looking for a transom mount motor that combines workhorse operation with the right level of refinement. Its smooth-running Digital Power Management technology ensures longer run time between battery charges. For even more flexibility, the motor head is reversible for bow-mount operation.



Classic twist-tiller operation and ergonomic extending handle for added control and comfort.



Available Thrust (lbs.):
45, 55
Speed Control:
Digital Variable
Shaft Length (in.):
18, 36



The powder-coated aluminum alloy transom mount has stainless steel locking pins for strength and solid engagement in seven positions.

HAND CONTROL / R5



NEW

R5

Power that Works Overtime.

You can count on the new R5 transom mount to deliver the thrust to move you effortlessly over long stretches. And with Digital Power Management technology extending the battery life, you can plan on spending more time fishing your favorite areas. Plus, MotorGuide invented saltwater-specific trolling motors, so we know a thing or two about protecting your investment from corrosion. Fish with more purpose and confidence than ever before with the all-new R5.

The rigid aluminum alloy mount features an easy-to-use tilt/stow/deploy mechanism that also allows the motor to be locked to the transom.



Available Thrust (lbs.):
80, 105
Speed Control:
Digital Variable
Shaft Length (in.):
42, 50



Shaft is made of a premium composite material with a lifetime warranty. Lower unit is protected with a proprietary three-coating process to withstand corrosion.



ACCESSORIES

Pinpoint® GPS

PINPOINT® GPS NAVIGATION SYSTEM
Ultra-precise GPS receiver and two digital compasses for incredibly accurate performance. **8M0092070**



PINPOINT® GPS
REPLACEMENT
REMOTE
8M0092071



NMEA 2000® STARTER KIT
For setting up an NMEA 2000® network required for a Pinpoint® GPS Gateway connection. **8M0107522**



PINPOINT® GPS GATEWAY
KIT Seamlessly integrates MotorGuide® and Lowrance® technologies. **8M0092085**



Rigging

TROLLING
MOTOR POWER
PLUG

Two-prong 12-, 24- or 36-volt power plug provides a solid, safe connection. **8M4000953**



TROLLING MOTOR POWER RECEPTACLE
Matching two-prong 12-, 24- or 36-volt trolling motor receptacle for bow-panel installation. **8M4000954**



8-GAUGE BATTERY CABLE AND TERMINALS WITH 50-AMP MANUAL RESET BREAKER Protect your investment with this 50-amp manual reset breaker and heavy-duty 8-ga. battery cable and terminal. **MM309922T**



LOWRANCE (6-Pin)
8M4001959



GARMIN (6-Pin)
8M4001961



VEXILAR (3-Pin)
8M4001960



HUMMINBIRD (7-Pin)
8M4001962



SONAR ADAPTERS WITH 7-PIN BLUE/GRAY CONNECTOR
The Sonar Adapters are designed to provide clean, clear signals for the leading sonar brands. For use with MotorGuide motors with blue/gray 7-pin sonar connector.

MANUAL RESET BREAKERS Protect your motor and boat wiring from connection failures. Simple, durable push button reset.



(50-amp) **MM5870**



(60-amp) **8M0064076**

QUICK CLAMP BATTERY CONNECTORS
Heavy-duty connectors for quick battery removal, charging, and storage. **8M0092072**



TROLLING MOTOR REPLACEMENT PLUG
Use with 16- to 8-gauge wire. Easy to connect with Trolling Motor Receptacle **8M0092066**. **8M0092065**



TROLLING MOTOR RECEPTACLE
Use with 10-gauge and 8-gauge wire. Includes composite mounting plate. **8M0092066**



TROLLING MOTOR RECEPTACLE 6-GAUGE ADAPTER
Accepts 6-gauge wire. For use with Trolling Motor Receptacle **8M0092066**. **8M0092067**



Mounting

UNIVERSAL QUICK RELEASE BRACKET
Quickly attach or remove any cable or electric steer motors. **8M0095972**



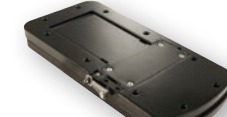
UNIVERSAL QUICK RELEASE BRACKET TOP PLATE
Flexibility to quickly and easily switch between motors. **8M0095973**



Xi SERIES QUICK-RELEASE BRACKETS
(Hardware included)
Composite, White
8M0092063



Composite, Black
8M0120717



Aluminum, Black
8M0092064

MOTORGUIDE® RAM® MOUNT
TROLLING MOTOR STABILIZERS Considered essential by northern anglers and saltwater fishermen alike. Prevents damage to motor, shaft and head in rough water conditions.

STANDARD
8M4000977
LONG
8M4000978



REMOVABLE MOUNT Makes motor removal and installation fast and simple. Universal hole patterns. Fits Gator® Flex 360, 20.8, 21, 21R, 24, 24R, X3, X3D, and X5 mounts.



MGA515A2



MGA501A2

UNIVERSAL EXTENSION HANDLES Locks into place to fit transom-mount trolling motors and most popular tiller engines.



MGA503A1



MGA504A1

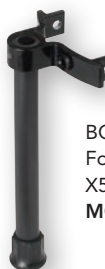
MOUNTING ISOLATORS
Absorbs shock and protects electronics. Four per package. **MGA015PB6**



TIE DOWN STRAPS
The adjustable hook and loop strap keeps your trolling motor safely secured while trailering or on the water. **MGA507A1**



TROLLING MOTOR MOUNTING KIT Absorbs shock and protects electronics. Steel bolts and washers fit all trolling motors. Four per package. **8M4000873**



BOUNCE BUSTER™ II
For Tour and X5 Mounts.
MGA097B6

Wireless Controls

Xi SERIES WIRELESS REMOTE Before operation, the handheld remote must be synced with the trolling motor. 2.4 GHZ
8M0092068



Xi SERIES WIRELESS FOOT PEDAL
Intuitive, pro-style "heel-toe" operation controls steering, makes it extremely quiet, precise, and 50% faster than the competition. 2.4 GHZ
8M0092069



PROPS

Fine-tuned Props.

MotorGuide® offers a complete line of performance-tuned propellers to enhance your motor's all-around performance in any application. MotorGuide custom props were designed with the input of the Mercury® Propeller engineers and include weedless, power, and shallow water options.

Our exclusive Machete® III prop runs quiet and is the ultimate shallow-water performer.

The Safari™ weedless delivers quiet power.

2-Blade Power Prop
Hub Size: 3"
Application: Power & Efficiency
MGA0476B



2-Blade Power Prop
Hub Size: 3.5"
Application: Power & Efficiency
MGA0495B



3-Blade Aluminum Machete
Hub Size: 3.5"
Application: Shallow & Durability
MGA087M



3-Blade Machete III Black
Hub Size: 3.5"
Application: Speed & Efficiency
MGA089B



3-Blade Machete III Grey
Glass-Filled
Hub Size: 3.5"
Application: Shallow & Durability
MGA089G



3-Blade Machete III White
Glass-Filled
Hub Size: 3.5"
Application: Speed & Efficiency
MGA089W



Safari™ Weedless
Hub Size: 3.5"
Application: Weedless & Power
8M0028330



Ninja™ Prop Wrench
Comes complete with spare prop nut and two prop pins, allowing fast prop changes.
MGA050B6



APPAREL



Mesh Back Cap
Unstructured, low profile. Adjustable hook and loop fastener closure.



Logo Long-sleeve Tee
100% cotton.
Sizes S-3X



Performance Tee
Moisture wicking
100% polyester
with UPF 30+
sun protection
Sizes S-3X



Sport Wick Hoodie
Moisture wicking
100% polyester
and anti-static. Sizes
S-2X



Backpack
Top-entry padded laptop compartment. Media pocket. Organization panel. Dual side beverage/accessory holsters. Adjustable shoulder straps.
19.25"H x 13"W x 9.5"D.
Fits most 15" laptops.



Logo Tee
100% cotton.
Sizes S-3X



Core Polo
Moisture wicking
100% Polyester.
Sizes M-2X



Neoprene Koozie
Available in red or black.



Floating Keychain
Neoprene key tag with floating foam insert. Max of 2 keys recommended.

SPECIFICATIONS

MotorGuide Motor Selection Chart - Freshwater Motors

Model	Part Number	Mount	Peak Thrust	Shaft	Shaft Material	Max AMP Draw	Volts
X5 FOOT-CONTROL BOW MOUNT							
X5-55FW FB 45" DIGITAL 12V	940500010	X5 Mount	55	45"	Composite	52	12
X5-55FW FB 45" DIGITAL 12V SNR	940500080	X5 Mount	55	45"	Composite	52	12
X5-70FW FB 45" DIGITAL 24V	940500170	X5 Mount	70	45"	Composite	42	24
X5-70FW FB 45" DIGITAL 24V SNR	940500180	X5 Mount	70	45"	Composite	42	24
X5-80FW FB 45" DIGITAL 24V	940500020	X5 Mount	80	45"	Composite	56	24
X5-80FW FB 45" DIGITAL 24V SNR	940500090	X5 Mount	80	45"	Composite	56	24
X5-80FW FB 50" DIGITAL 24V	940500030	X5 Mount	80	50"	Composite	56	24
X5-80FW FB 50" DIGITAL 24V SNR	940500100	X5 Mount	80	50"	Composite	56	24
X5-80FW FB 60" DIGITAL 24V	940500040	X5 Mount	80	60"	Composite	56	24
X5-80FW FB 60" DIGITAL 24V SNR	940500110	X5 Mount	80	60"	Composite	56	24
X5-105FW FB 45" DIGITAL 36V	940500050	X5 Mount	105	45"	Composite	36	36
X5-105FW FB 45" DIGITAL 36V SNR	940500120	X5 Mount	105	45"	Composite	36	36
X5-105FW FB 50" DIGITAL 36V	940500060	X5 Mount	105	50"	Composite	36	36
X5-105FW FB 50" DIGITAL 36V SNR	940500130	X5 Mount	105	50"	Composite	36	36
X5-105FW FB 60" DIGITAL 36V	940500070	X5 Mount	105	60"	Composite	36	36
X5-105FW FB 60" DIGITAL 36V SNR	940500140	X5 Mount	105	60"	Composite	36	36
X5 HAND-CONTROL BOW MOUNT							
X5-80FW HB 50" DIGITAL 24V	940500220	X5 Mount	80	50"	Composite	56	24
X3 FOOT-CONTROL BOW MOUNT							
X3-45FW 36" 12V	940200050	X3 Mount	45	36"	Composite	38	12
X3-45FW 45" 12V	940200060	X3 Mount	45	45"	Composite	38	12
X3-45FW 50" 12V	940200070	X3 Mount	45	50"	Composite	38	12
X3-55FW 36" 12V	940200080	X3 Mount	55	36"	Composite	52	12
X3-55FW 45" 12V	940200090	X3 Mount	55	45"	Composite	52	12
X3-55FW 50" 12V	940200100	X3 Mount	55	50"	Composite	52	12
X3-70FW 45" 24V	940200110	X3 Mount	70	45"	Composite	42	24
X3-70FW 50" 24V	940200120	X3 Mount	70	50"	Composite	42	24
X3-55FW 36" 12V DIGITAL	940200220	X3 Mount	55	36"	Composite	52	12
X3-55FW 45" 12V DIGITAL	940200170	X3 Mount	55	45"	Composite	52	12
X3-70FW 45" 24V DIGITAL	940200180	X3 Mount	70	45"	Composite	42	24
X3 HAND-CONTROL BOW MOUNT							
X3-45FW 50" HB 12V, HAND	940200200	X3 Mount	45	50"	Composite	44	12
X3-55FW 50" HB 12V, HAND	940200210	X3 Mount	55	50"	Composite	49	12
X3-55FW 50" HB 12V DIGITAL, HAND	940200190	X3 Mount	55	50"	Composite	49	12
X3-55FW 50" HB 12V DIGITAL PONTTOON	940200230	Pontoon Mount	55	50"	Composite	49	12
X3-70FW 50" HB 24V, HAND	940200250	X3 Mount	70	50"	Composite	42	24
X3-70FW 50" HB 24V, DIGITAL, HAND	940200260	X3 Mount	70	50"	Composite	42	24
X3-70FW 50" HB 24V, DIGITAL, PONTTOON	940200270	Pontoon Mount	70	50"	Composite	42	24

SPECIFICATIONS

Speed Control	Motor Directions	Directional Indicator	Steering	Propeller	Integrated Sonar	Pinpoint® GPS	Pinpoint® GPS Gateway	Battery Meter
Digital Variable	Forward	Lighted	Dual Cable/VRS	2bl Safari	No	No	No	Yes
Digital Variable	Forward	Lighted	Dual Cable/VRS	2bl Safari	Yes	No	No	Yes
Digital Variable	Forward	Lighted	Dual Cable/VRS	2bl Safari	No	No	No	Yes
Digital Variable	Forward	Lighted	Dual Cable/VRS	2bl Safari	Yes	No	No	Yes
Digital Variable	Forward	Lighted	Dual Cable/VRS	2bl Safari	No	No	No	Yes
Digital Variable	Forward	Lighted	Dual Cable/VRS	2bl Safari	Yes	No	No	Yes
Digital Variable	Forward	Lighted	Dual Cable/VRS	2bl Safari	No	No	No	Yes
Digital Variable	Forward	Lighted	Dual Cable/VRS	2bl Safari	Yes	No	No	Yes
Digital Variable	Forward	Lighted	Dual Cable/VRS	2bl Safari	No	No	No	Yes
Digital Variable	Forward	Lighted	Dual Cable/VRS	2bl Safari	Yes	No	No	Yes
Digital Variable	Forward	Lighted	Dual Cable/VRS	2bl Safari	No	No	No	Yes
Digital Variable	Forward	Lighted	Dual Cable/VRS	2bl Safari	Yes	No	No	Yes
Digital Variable	Forward	Lighted	Dual Cable/VRS	2bl Safari	No	No	No	Yes
Digital Variable	Forward	Lighted	Dual Cable/VRS	2bl Safari	Yes	No	No	Yes
Digital Variable	Forward	Lighted	Dual Cable/VRS	2bl Safari	No	No	No	Yes
Digital Variable	Forward	Lighted	Dual Cable/VRS	2bl Safari	Yes	No	No	Yes
Digital Variable	Forward/Reverse	No	Twist/Extendable	3bl Machete	No	No	No	Yes
5	Forward	Yes	Dual Cable/VRS	2bl Safari	No	No	No	Yes
5	Forward	Yes	Dual Cable/VRS	2bl Safari	No	No	No	Yes
5	Forward	Yes	Dual Cable/VRS	2bl Safari	No	No	No	Yes
5	Forward	Yes	Dual Cable/VRS	2bl Safari	No	No	No	Yes
5	Forward	Yes	Dual Cable/VRS	2bl Safari	No	No	No	Yes
5	Forward	Yes	Dual Cable/VRS	2bl Safari	No	No	No	Yes
5	Forward	Yes	Dual Cable/VRS	2bl Safari	No	No	No	Yes
Digital Variable	Forward	Lighted	Dual Cable/VRS	2bl Safari	No	No	No	Yes
Digital Variable	Forward	Lighted	Dual Cable/VRS	2bl Safari	No	No	No	Yes
Digital Variable	Forward	Lighted	Dual Cable/VRS	2bl Safari	No	No	No	Yes
5/2	Forward/Reverse	No	Twist/Extendable	3bl Machete	No	No	No	No
5/2	Forward/Reverse	No	Twist/Extendable	3bl Machete	No	No	No	No
Digital Variable	Forward/Reverse	No	Twist/Extendable	3bl Machete	No	No	No	Yes
Digital Variable	Forward/Reverse	No	Twist/Extendable	3bl Machete	No	No	No	Yes
5/2	Forward/Reverse	No	Twist/Extendable	3bl Machete	No	No	No	No
Digital Variable	Forward/Reverse	No	Twist/Extendable	3bl Machete	No	No	No	Yes
Digital Variable	Forward/Reverse	No	Twist/Extendable	3bl Machete	No	No	No	Yes

SPECIFICATIONS

MotorGuide Motor Selection Chart - Freshwater Motors

Model	Part Number	Mount	Peak Thrust	Shaft	Shaft Material	Max AMP Draw	Volts
Xi5 WIRELESS ELECTRIC STEER BOW MOUNT							
Xi5-55FW 45" 12V FP SNR GPS	940800210	Xi5 Mount	55	45"	Composite	52	12
Xi5-55FW 48" 12V FP	940800170	Xi5 Mount	55	48"	Composite	52	12
Xi5-55FW 48" 12V FP SNR GPS	940800211	Xi5 Mount	55	48"	Composite	52	12
Xi5-55FW 54" 12V FP	940800180	Xi5 Mount	55	54"	Composite	52	12
Xi5-55FW 54" 12V FP SNR GPS	940800220	Xi5 Mount	55	54"	Composite	52	12
Xi5-80FW 45" 24V FP SNR GPS	940800270	Xi5 Mount	80	45"	Composite	56	24
Xi5-80FW 54" 24V FP	940800080	Xi5 Mount	80	54"	Composite	56	24
Xi5-80FW 54" 24V FP SNR GPS	940800230	Xi5 Mount	80	54"	Composite	56	24
Xi5-80FW 60" 24V FP	940800090	Xi5 Mount	80	60"	Composite	56	24
Xi5-80FW 60" 24V FP SNR GPS	940800240	Xi5 Mount	80	60"	Composite	56	24
Xi5-80FW 72" 24V FP SNR GPS	940800350	Xi5 Mount	80	72"	Composite	56	24
Xi5-105FW 48" 36V FP SNR GPS	940800280	Xi5 Mount	105	48"	Composite	41	36
Xi5-105FW 54" 36V FP	940800130	Xi5 Mount	105	54"	Composite	41	36
Xi5-105FW 54" 36V FP SNR GPS	940800250	Xi5 Mount	105	54"	Composite	41	36
Xi5-105FW 60" 36V FP	940800140	Xi5 Mount	105	60"	Composite	41	36
Xi5-105FW 60" 36V FP SNR GPS	940800260	Xi5 Mount	105	54"	Composite	41	36
Xi5-105FW 72" 36V FP SNR GPS	940800360	Xi5 Mount	105	72"	Composite	41	36
Xi3 WIRELESS ELECTRIC STEER BOW MOUNT							
Xi3-45FW 48"	940700140	Xi3 Mount	45	48"	Composite	38	12
Xi3-54FW 48" PONTOON	940700210	Xi3 Mount	54	48"	Composite	52	12
Xi3-55FW 48" GPS	940700010	Xi3 Mount	55	48"	Composite	52	12
Xi3-55FW 54" GPS	940700020	Xi3 Mount	55	54"	Composite	52	12
Xi3-55FW 54" SNR	940700060	Xi3 Mount	55	54"	Composite	52	12
Xi3-55FW 54" SNR/GPS	940700100	Xi3 Mount	55	54"	Composite	52	12
Xi3-55FW 48"	940700160	Xi3 Mount	55	48"	Composite	52	12
Xi3-55FW 54"	940700170	Xi3 Mount	55	54"	Composite	52	12
Xi3-55FW 60"	940700180	Xi3 Mount	55	60"	Composite	52	12
Xi3-68FW 48" PONTOON	940700220	Xi3 Mount	68	48"	Composite	42	24
Xi3-70FW 54" GPS	940700030	Xi3 Mount	70	54"	Composite	42	24
Xi3-70FW 54" SNR	940700070	Xi3 Mount	70	54"	Composite	42	24
Xi3-70FW 60" SNR	940700080	Xi3 Mount	70	60"	Composite	42	24
Xi3-70FW 54" SNR/GPS	940700120	Xi3 Mount	70	54"	Composite	42	24
Xi3-70FW 60" SNR/GPS	940700130	Xi3 Mount	70	60"	Composite	42	24
Xi3-70FW 54"	940700190	Xi3 Mount	70	54"	Composite	42	24
Xi3-70FW 60"	940700200	Xi3 Mount	70	60"	Composite	42	24
R5 HAND-CONTROL TRANSOM MOUNT							
R5-70FW HT 42" 24V	940300030	#09 Transom Wide-Bite®	70	42"	Composite	42	24
R5-80FW HT 42" 24V	940300040	#09 Transom Wide-Bite®	80	42"	Composite	56	24
R5-105FW HT 42" 36V	940300050	#09 Transom Wide-Bite®	105	42"	Composite	36	36
R3 HAND-CONTROL TRANSOM MOUNT							
R3-30 HT 30" 12V 03MT	940100170	#03 Transom	30	30"	Aluminum	36	12
R3-40 HT 36" 12V 03MT	940100160	#03 Transom	40	36"	Aluminum	43	12
R3-40 HT 36" 12V DIGITAL 03MT	940100200	#03 Transom	40	36"	Aluminum	43	12
R3-45 HT 36" 12V 09MT	940100150	#09 Transom Wide-Bite®	45	36"	Composite	44	12
R3-45 HT 36" 12V DIGITAL 09MT	940100180	#09 Transom Wide-Bite®	45	36"	Composite	44	12
R3-55 HT 36" 12V 09MT	940100140	#09 Transom Wide-Bite®	55	36"	Composite	49	12
R3-55 HT 36" 12V DIGITAL 09MT	940100190	#09 Transom Wide-Bite®	55	36"	Composite	49	12
R3-55 HT 42" 12V DIGITAL 09MT	940100210	#09 Transom Wide-Bite®	55	42"	Composite	49	12
BULLDOG FOOT-CONTROL TRANSOM MOUNT							
BULLDOG 40 30" 03MT	921500020	#09 Transom Wide-Bite®	40	30"	Aluminum	38	12
BULLDOG 54 30" 09MT	921500090	#09 Transom Wide-Bite®	54	30"	Aluminum	52	12

SPECIFICATIONS

Speed Control	Motor Directions	Directional Indicator	Steering	Propeller	Integrated Sonar	Pinpoint® GPS	Pinpoint® GPS Gateway	Battery Meter
Digital Variable	Forward	No	Wireless Pedal/Remote	2bl Safari	Yes	Yes	Compatible	Yes
Digital Variable	Forward	No	Wireless Pedal	2bl Safari	No	Compatible	Compatible	Yes
Digital Variable	Forward	No	Wireless Pedal/Remote	2bl Safari	Yes	Yes	Compatible	Yes
Digital Variable	Forward	No	Wireless Pedal	2bl Safari	No	Compatible	Compatible	Yes
Digital Variable	Forward	No	Wireless Pedal/Remote	2bl Safari	Yes	Yes	Compatible	Yes
Digital Variable	Forward	No	Wireless Pedal/Remote	2bl Safari	Yes	Yes	Compatible	Yes
Digital Variable	Forward	No	Wireless Pedal	2bl Safari	No	Compatible	Compatible	Yes
Digital Variable	Forward	No	Wireless Pedal/Remote	2bl Safari	Yes	Yes	Compatible	Yes
Digital Variable	Forward	No	Wireless Pedal/Remote	2bl Safari	Yes	Yes	Compatible	Yes
Digital Variable	Forward	No	Wireless Pedal/Remote	2bl Safari	Yes	Yes	Compatible	Yes
Digital Variable	Forward	No	Wireless Pedal	2bl Safari	No	Compatible	Compatible	Yes
Digital Variable	Forward	No	Wireless Pedal/Remote	2bl Safari	Yes	Yes	Compatible	Yes
Digital Variable	Forward	No	Wireless Pedal/Remote	2bl Safari	Yes	Yes	Compatible	Yes
Digital Variable	Forward	No	Wireless Pedal	2bl Safari	No	Compatible	Compatible	Yes
Digital Variable	Forward	No	Wireless Pedal/Remote	2bl Safari	Yes	Yes	Compatible	Yes
Digital Variable	Forward	No	Wireless Pedal/Remote	2bl Safari	Yes	Yes	Compatible	Yes
Digital Variable	Forward	No	Wireless Remote	3bl Machete	No	Compatible	Compatible	Yes
Digital Variable	Forward	No	Wireless Remote	3bl Machete	No	Compatible	Compatible	Yes
Digital Variable	Forward	No	Wireless Remote	3bl Machete	No	Yes	Compatible	Yes
Digital Variable	Forward	No	Wireless Remote	3bl Machete	No	Yes	Compatible	Yes
Digital Variable	Forward	No	Wireless Remote	3bl Machete	Yes	Compatible	Compatible	Yes
Digital Variable	Forward	No	Wireless Remote	3bl Machete	Yes	Yes	Compatible	Yes
Digital Variable	Forward	No	Wireless Remote	3bl Machete	No	Compatible	Compatible	Yes
Digital Variable	Forward	No	Wireless Remote	3bl Machete	No	Yes	Compatible	Yes
Digital Variable	Forward	No	Wireless Remote	3bl Machete	Yes	Compatible	Compatible	Yes
Digital Variable	Forward	No	Wireless Remote	3bl Machete	Yes	Yes	Compatible	Yes
Digital Variable	Forward	No	Wireless Remote	3bl Machete	No	Compatible	Compatible	Yes
Digital Variable	Forward	No	Wireless Remote	3bl Machete	No	Compatible	Compatible	Yes
Digital Variable	Forward	No	Twist/Extendable	3bl Machete	No	No	No	Yes
Digital Variable	Forward	No	Twist/Extendable	3bl Machete	No	No	No	Yes
Digital Variable	Forward	No	Twist/Extendable	3bl Machete	No	No	No	Yes
5/2	Forward/Reverse	No	Twist/Extendable	2bl	No	No	No	No
5/2	Forward/Reverse	No	Twist/Extendable	3bl Machete	No	No	No	No
Digital Variable	Forward/Reverse	No	Twist/Extendable	3bl Machete	No	No	No	Yes
5/2	Forward/Reverse	No	Twist/Extendable	3bl Machete	No	No	No	No
Digital Variable	Forward/Reverse	No	Twist/Extendable	3bl Machete	No	No	No	Yes
5/2	Forward/Reverse	No	Twist/Extendable	3bl Machete	No	No	No	No
Digital Variable	Forward/Reverse	No	Twist/Extendable	3bl Machete	No	No	No	Yes
Digital Variable	Forward/Reverse	No	Twist/Extendable	3bl Machete	No	No	No	Yes
5	Forward	Yes	Single Cable	3bl Machete	No	No	No	No
5	Forward	Yes	Single Cable	3bl Machete	No	No	No	No

SPECIFICATIONS

MotorGuide Motor Selection Chart - Saltwater Motors

Model	Part Number	Mount	Peak Thrust	Shaft	Shaft Material	Max AMP Draw	Volts
X5 HAND-CONTROL BOW MOUNT							
X5-80SW HB 50"	941400040	X5 Mount	80	50"	Composite	56	24
X5-80SW HB 60"	941400050	X5 Mount	80	60"	Composite	56	24
X5-105SW HB 50"	941400060	X5 Mount	105	50"	Composite	36	36
X5-105SW HB 60"	941400070	X5 Mount	105	60"	Composite	36	36
X3 HAND-CONTROL BOW MOUNT							
X3-55SW 50" HB 12V DIGITAL, HAND	941300010	X3 Mount	55	50"	Composite	49	12
X3-70SW 50" HB 12V DIGITAL, HAND	941300020	X3 Mount	70	50"	Composite	42	24
Xi5 WIRELESS ELECTRIC STEER BOW MOUNT							
Xi5-55SW 48" 12V FOB	941700060	Xi5 Mount	55	48"	Composite	52	12
Xi5-55SW 54" 12V FOB	941700070	Xi5 Mount	55	54"	Composite	52	12
Xi5-55SW 54" 12V GPS	941700080	Xi5 Mount	55	54"	Composite	52	12
Xi5-80SW 54" 24V FOB	941700020	Xi5 Mount	80	54"	Composite	56	24
Xi5-80SW 60" 24V FOB	941700030	Xi5 Mount	80	60"	Composite	56	24
Xi5-80SW 48" 24V GPS	941700110	Xi5 Mount	80	48"	Composite	56	24
Xi5-80SW 60" 24V GPS	941700090	Xi5 Mount	80	60"	Composite	56	24
Xi5-105SW 54" 36V FOB	941700040	Xi5 Mount	105	54"	Composite	41	36
Xi5-105SW 60" 36V FOB	941700050	Xi5 Mount	105	60"	Composite	41	36
Xi5-105SW 60" 36V GPS	941700100	Xi5 Mount	105	60"	Composite	41	36
Xi5-105SW 72" 36V GPS	941700170	Xi5 Mount	105	72"	Composite	41	36
Xi3 WIRELESS ELECTRIC STEER BOW MOUNT							
Xi3-55SW 48"	941600010	Xi3 Mount	55	48"	Composite	52	12
Xi3-55SW 54"	941600020	Xi3 Mount	55	54"	Composite	52	12
Xi3-55SW 48" GPS	941600050	Xi3 Mount	55	48"	Composite	52	12
Xi3-55SW 54" GPS	941600060	Xi3 Mount	55	54"	Composite	52	12
Xi3-70SW 54"	941600030	Xi3 Mount	70	54"	Composite	42	24
Xi3-70SW 60"	941600040	Xi3 Mount	70	60"	Composite	42	24
Xi3-70SW 54" GPS	941600070	Xi3 Mount	70	54"	Composite	42	24
Xi3-70SW 60" GPS	941600080	Xi3 Mount	70	60"	Composite	42	24
R5 HAND-CONTROL TRANSOM MOUNT							
R5-80SW HT 42"	941100010	#09 Transom Wide-Bite	80	42"	Composite	56	24
R5-105SW HT 50"	941100020	#09 Transom Wide-Bite	105	50"	Composite	36	36
R3 HAND-CONTROL TRANSOM MOUNT							
R3-45SW HT 18" 12V DIGITAL 09MT	941000030	#09 Transom Wide-Bite	45	18"	Composite	44	12
R3-45SW HT 36" 12V DIGITAL 09MT	941000010	#09 Transom Wide-Bite	45	36"	Composite	44	12
R3-55SW HT 36" 12V DIGITAL 09MT	941000020	#09 Transom Wide-Bite	55	36"	Composite	49	12

SPECIFICATIONS

Speed Control	Motor Directions	Directional Indicator	Steering	Propeller	Integrated Sonar	Pinpoint® GPS	Pinpoint® GPS Gateway	Battery Meter
Digital Variable	Forward	No	Twist/Extendable	3bl Machete	No	No	No	Yes
Digital Variable	Forward	No	Twist/Extendable	3bl Machete	No	No	No	Yes
Digital Variable	Forward	No	Twist/Extendable	3bl Machete	No	No	No	Yes
Digital Variable	Forward	No	Twist/Extendable	3bl Machete	No	No	No	Yes
Digital Variable	Forward/Reverse	No	Twist/Extendable	3bl Machete	No	No	No	Yes
Digital Variable	Forward/Reverse	No	Twist/Extendable	3bl Machete	No	No	No	Yes
Digital Variable	Forward	No	Wireless Remote	2bl Safari	No	Compatible	Compatible	Yes
Digital Variable	Forward	No	Wireless Remote	2bl Safari	No	Compatible	Compatible	Yes
Digital Variable	Forward	No	GPS Remote	2bl Safari	No	Yes	Compatible	Yes
Digital Variable	Forward	No	Wireless Remote	2bl Safari	No	Compatible	Compatible	Yes
Digital Variable	Forward	No	Wireless Remote	2bl Safari	No	Compatible	Compatible	Yes
Digital Variable	Forward	No	GPS Remote	2bl Safari	No	Yes	Compatible	Yes
Digital Variable	Forward	No	GPS Remote	2bl Safari	No	Yes	Compatible	Yes
Digital Variable	Forward	No	Wireless Remote	2bl Safari	No	Compatible	Compatible	Yes
Digital Variable	Forward	No	Wireless Remote	2bl Safari	No	Compatible	Compatible	Yes
Digital Variable	Forward	No	GPS Remote	2bl Safari	No	Yes	Compatible	Yes
Digital Variable	Forward	No	GPS Remote	2bl Safari	No	Yes	Compatible	Yes
Digital Variable	Forward	No	Wireless Remote	3bl Machete	No	Compatible	Compatible	Yes
Digital Variable	Forward	No	Wireless Remote	3bl Machete	No	Compatible	Compatible	Yes
Digital Variable	Forward	No	Wireless Remote	3bl Machete	No	Yes	Compatible	Yes
Digital Variable	Forward	No	Wireless Remote	3bl Machete	No	Yes	Compatible	Yes
Digital Variable	Forward	No	Wireless Remote	3bl Machete	No	Yes	Compatible	Yes
Digital Variable	Forward	No	Wireless Remote	3bl Machete	No	Yes	Compatible	Yes
Digital Variable	Forward	No	Twist/Extendable	3bl Machete	No	No	No	Yes
Digital Variable	Forward	No	Twist/Extendable	3bl Machete	No	No	No	Yes
Digital Variable	Forward/Reverse	No	Twist/Extendable	3bl Machete	No	No	No	Yes
Digital Variable	Forward/Reverse	No	Twist/Extendable	3bl Machete	No	No	No	Yes
Digital Variable	Forward/Reverse	No	Twist/Extendable	3bl Machete	No	No	No	Yes