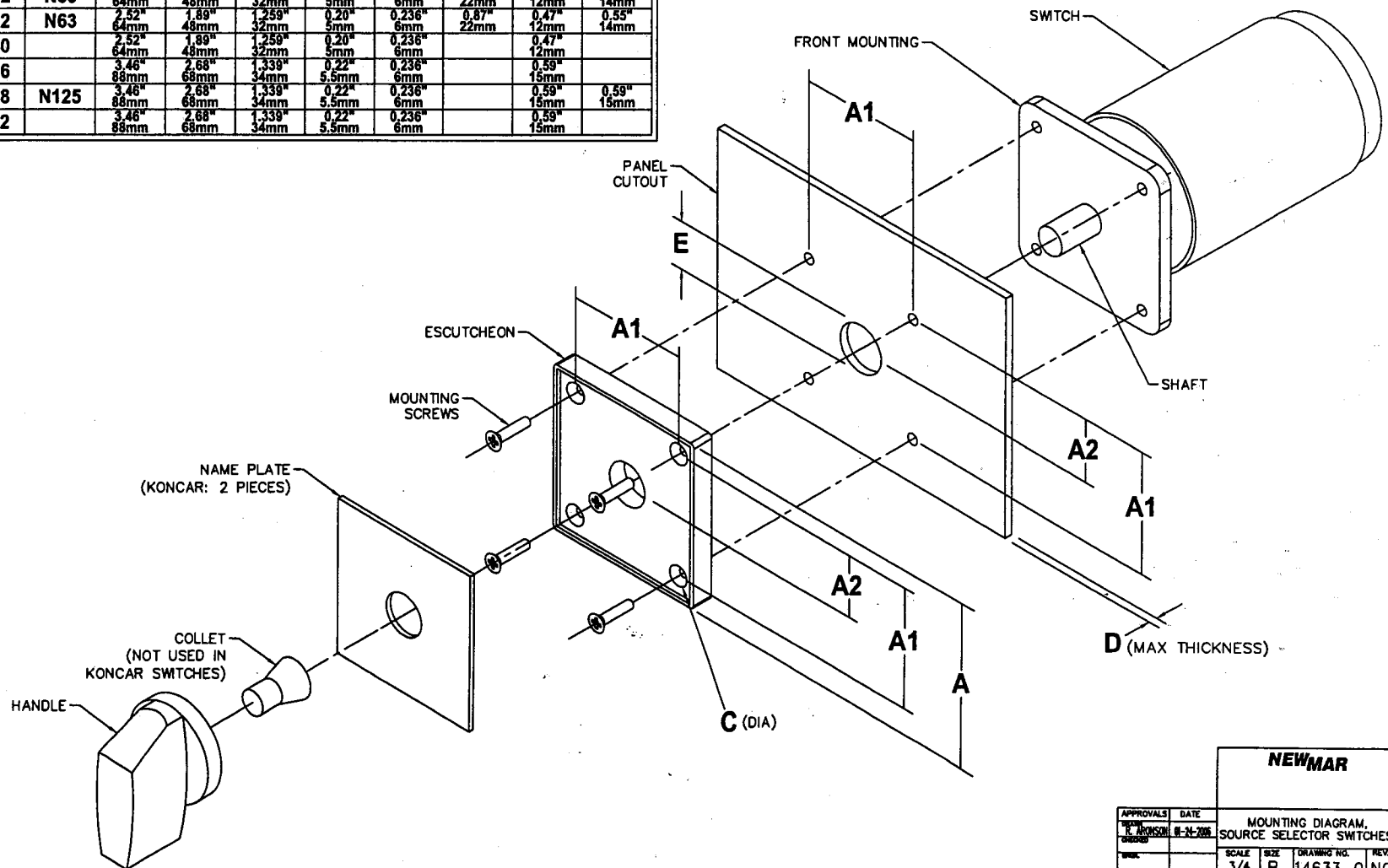


REVISIONS			
REV	DESCRIPTION	DATE	APPROVED
NC	INITIAL RELEASE	01-24-06	

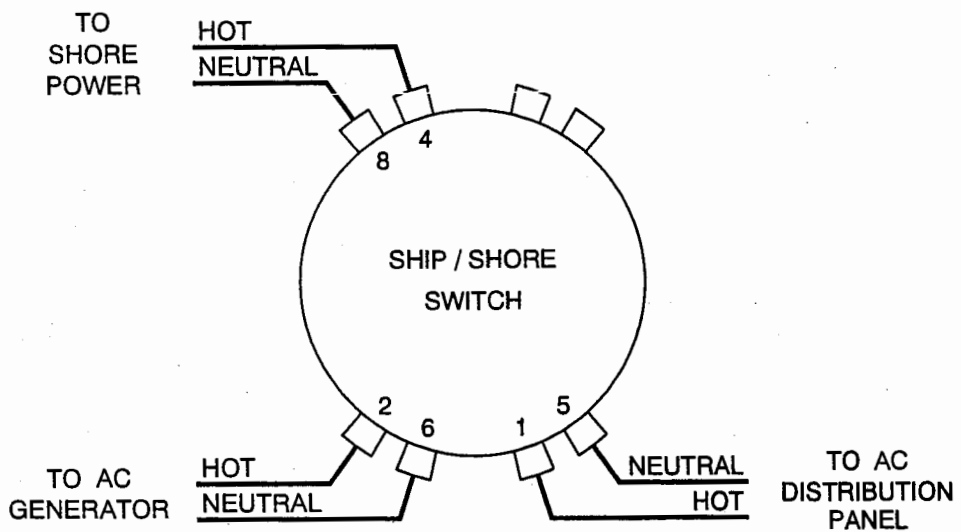
AC SOURCE SELECTOR SWITCHES												
		MANFACT'S MODEL			MOUNTING DIMENSIONS							
Model	Rating	K-N	Salzer	Koncar	A	A1	A2	C	D	E Shaft		
										K-N	Salzer	Koncar
SS 3.0	30 AMP	CA20	S225	N32	2.52" 64mm	1.89" 48mm	1.259" 32mm	0.20" 5mm	0.236" 6mm	0.71" 18mm	0.78" 4.5mm	0.55" 14mm
SS 7.5	63 AMP	CA32	S432	N63	2.52" 64mm	1.89" 48mm	1.259" 32mm	0.20" 5mm	0.236" 6mm	0.87" 22mm	0.47" 12mm	0.55" 14mm
SS7.5 INV	63 AMP	CA32	S432	N63	2.52" 64mm	1.89" 48mm	1.259" 32mm	0.20" 5mm	0.236" 6mm	0.87" 22mm	0.47" 12mm	0.55" 14mm
SS15	126 AMP	CA32	S432	N63	2.52" 64mm	1.89" 48mm	1.259" 32mm	0.20" 5mm	0.236" 6mm	0.87" 22mm	0.47" 12mm	0.55" 14mm
Special	80 AMP		S440		2.52" 64mm	1.89" 48mm	1.259" 32mm	0.20" 5mm	0.236" 6mm		0.47" 12mm	
Special	100 AMP		S606		3.46" 88mm	2.68" 68mm	1.339" 34mm	0.22" 5.5mm	0.236" 6mm		0.59" 15mm	
Special	125 AMP		S608	N125	3.46" 88mm	2.68" 68mm	1.339" 34mm	0.22" 5.5mm	0.236" 6mm		0.59" 15mm	0.59" 15mm
Special	200 AMP		S612		3.46" 88mm	2.68" 68mm	1.339" 34mm	0.22" 5.5mm	0.236" 6mm		0.59" 15mm	



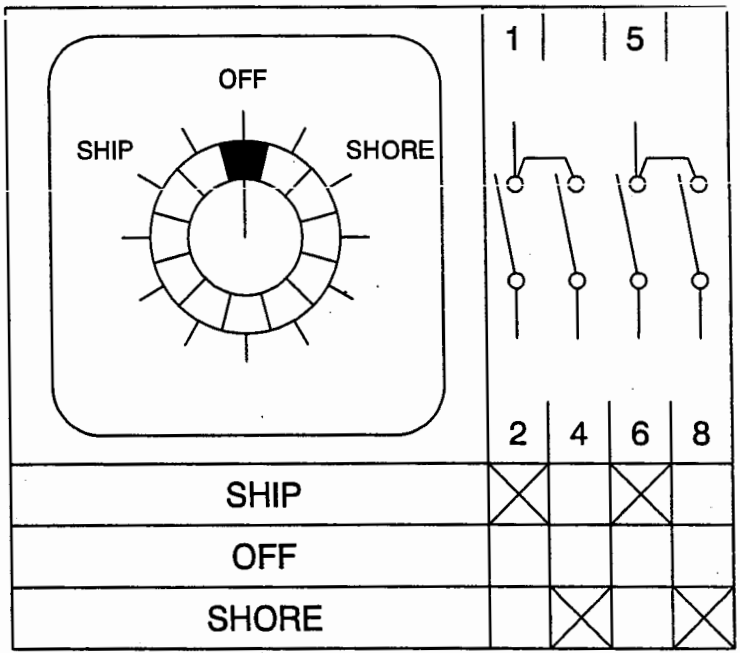
APPROVALS		DATE	NEWMAR	
T. JOHNSON		8-11-2006	MOUNTING DIAGRAM, SOURCE SELECTOR SWITCHES.	
SCALE	SIZE	DRAWING NO.	REV.	
3/4	B	14633-0	NC	
SHEET 1 OF 1				

THIS DOCUMENT AND THE INFORMATION CONTAINED THEREIN IS PROPRIETARY TO NEWMAR CORPORATION AND SHALL NOT BE USED OR DISCLOSED TO OTHERS, IN WHOLE OR IN PART, WITHOUT THE WRITTEN AUTHORIZATION OF NEWMAR CORPORATION.

REVISIONS			
REV	DESCRIPTION	DATE	APPROVED
NC	INITIAL RELEASE	09-13-04	



WIRING DIAGRAM



CONTACT CONFIGURATION

-SHIP / SHORE SELECTOR WIRING DIAGRAM-

MODEL SS-7.5; RATED @ 120/240 VAC, 63 AMPS, MAX
 MODEL SS-3.0; RATED @ 120/240 VAC, 30 AMPS, MAX

NEWMAR

WIRING PICTORIAL
 SHIP / SHORE SWITCHES
 MODELS SS-7.5 & SS-3.0

APPROVALS	DATE
DRAWN R. ARONSON	09-13-2004
CHECKED	
ENGR.	

SCALE	SIZE	DRAWING NO.	REV.
NONE	A	14531-0	NC

HEET 1 OF 1