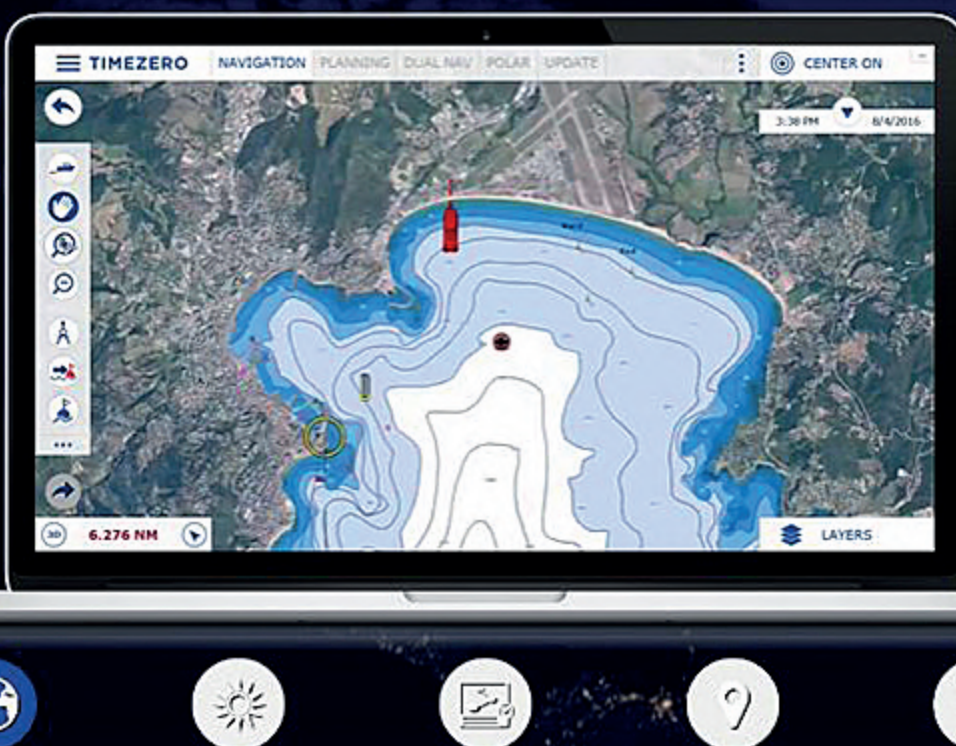
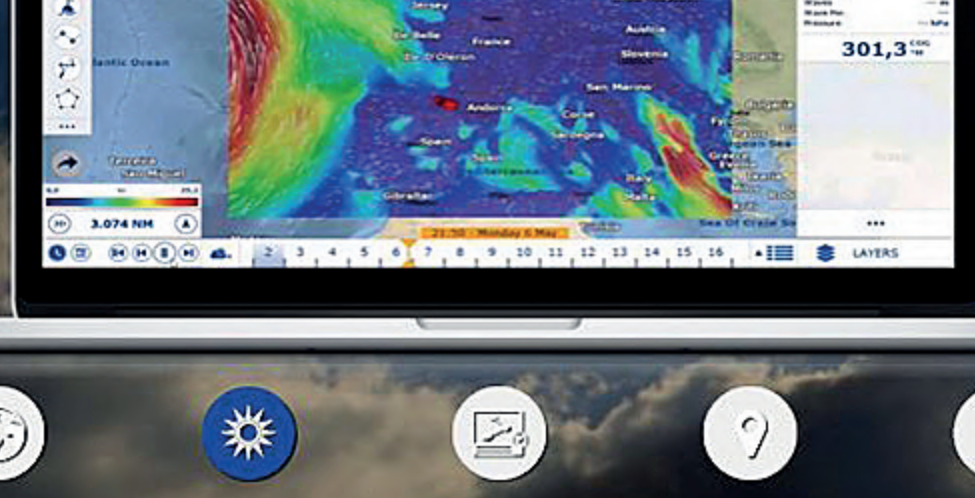


# Why should you choose TZ Navigator?



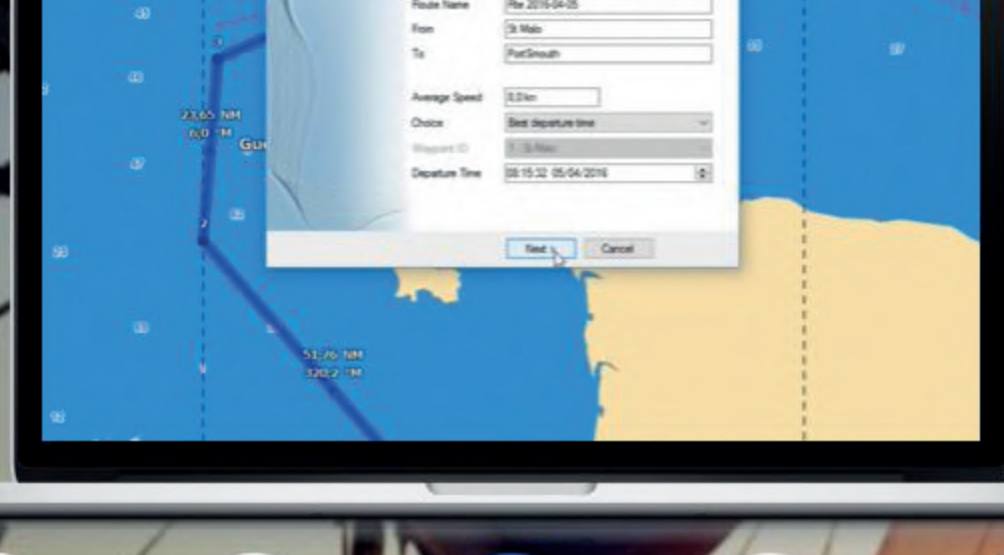
- Maps
- Weather & Tides
- Route Planning
- Targets & POIs
- Interface

Have the world at your fingertips thanks to the mm3d charts catalog compatible with TZ Navigator. Its worldwide coverage is available with raster charts and vector charts (C-MAP and Datacore by Navionics). In addition, the TIMEZERO technology integrate an unparalleled chart engine where marine charts, 3D data and satellites photo are wisely mixed through PhotoFusion.



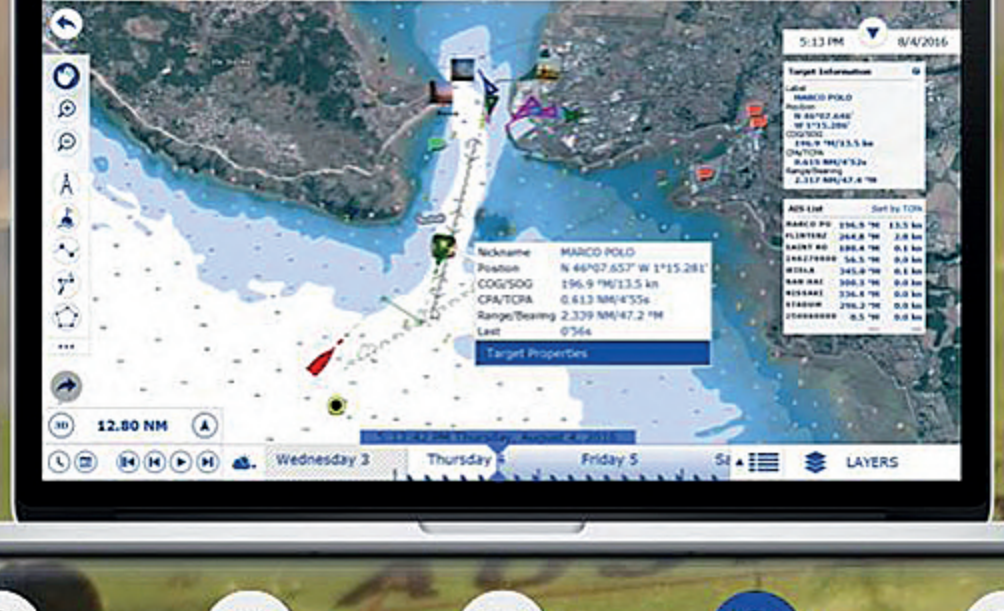
- Maps
- Weather & Tides
- Route Planning
- Targets & POIs
- Interface

Enjoy our free Weather Forecast and tide database wherever you are navigating around the world.



- Maps
- Weather & Tides
- Route Planning
- Targets & POIs
- Interface

The Route Planning Wizard allows you to compute departure time according to various conditions (Tides, Currents, Transit Time, etc.). Arrive at high tide or leave the harbor with optimal currents conditions has never been this easy!



- Maps
- Weather & Tides
- Route Planning
- Targets & POIs
- Interface

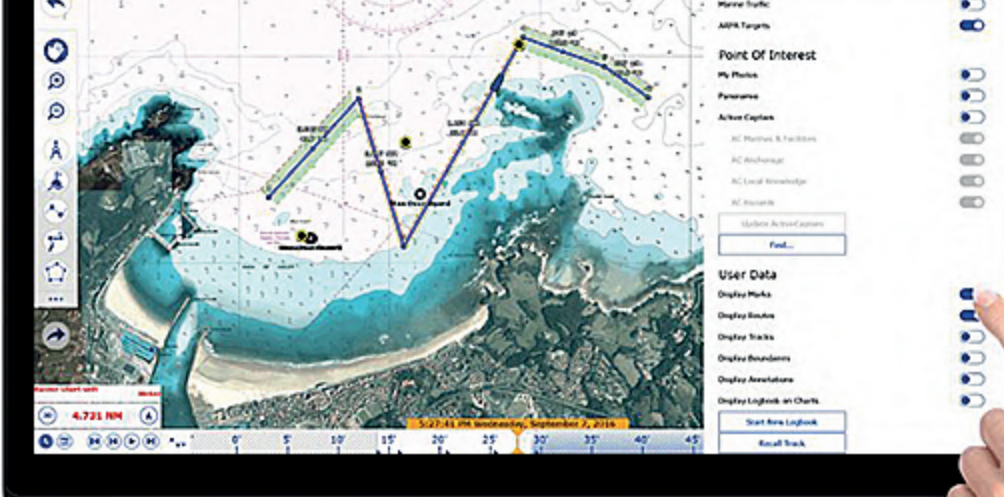
Navigate safely with total peace of mind! TIMEZERO is the first navigation software to offer ActiveCaptain Points-of-Interest (POI) integration and real-time updating. The AIS function is also included by default in your features.



- Maps
- Weather & Tides
- Route Planning
- Targets & POIs
- Interface

Because your software should be as comfortable as your boat, the latest generation of user-friendly interface is fully adapted to be used on touchscreen.

## The latest generation of user interface



The user interface of TZ Navigator is intuitive and fully adapted to be used on touch screens! Touch screen makes your life much easier when it comes to route planning as well as all the other features which have made TIMEZERO a huge success for more than 30 years.

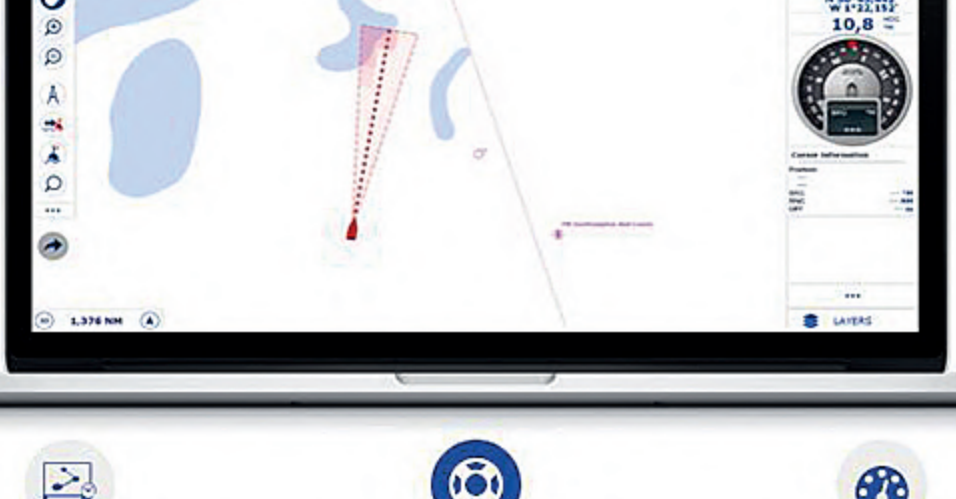
## Your safety matters!



- Route Planning
- Security Cone
- Odometer

TZ Navigator comes with a suite of new features that will dramatically increase your safety onboard.

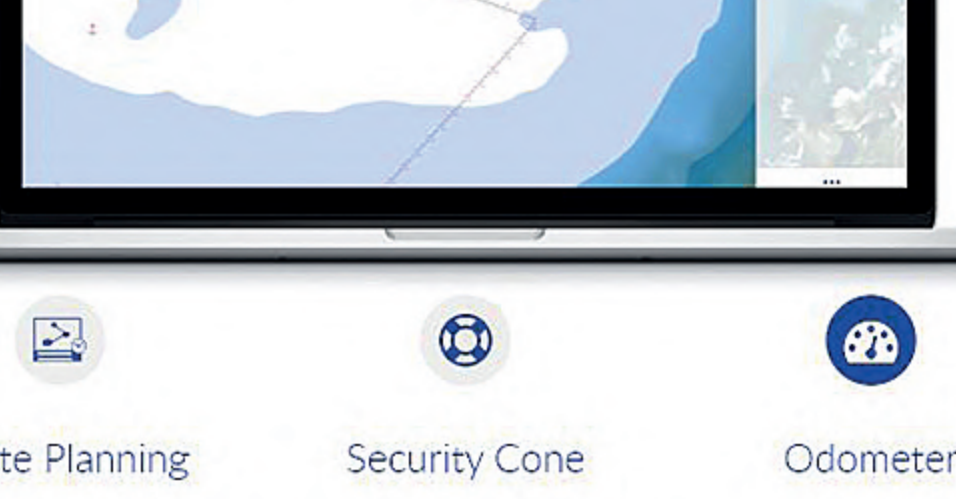
**Route Planning** is of the utmost importance for every boater. Our new technology assures the security of a route upon creation: Through color codes (green/red) it is instantaneously possible to know if the depth is sufficient for the safe passing of your boat.



- Route Planning
- Security Cone
- Odometer

TZ Navigator comes with a suite of new features that will dramatically increase your safety onboard.

The **new security cone** is a feature in adherence with the official rules of the IMO. It takes into account the information of vector charts in order to detect isolated dangers and shallow areas. If an obstacle is detected inside this cone in front of the boat's trajectory, an anti-grounding alarm will automatically be triggered.



- Route Planning
- Security Cone
- Odometer

TZ Navigator comes with a suite of new features that will dramatically increase your safety onboard.

In addition, our new **Odometer NavData** will automatically display your trip information including Duration, Distance, Max Speed and Average speed.

Learn more about [other marine electronics & navigation](#) by Nobeltec on our website.