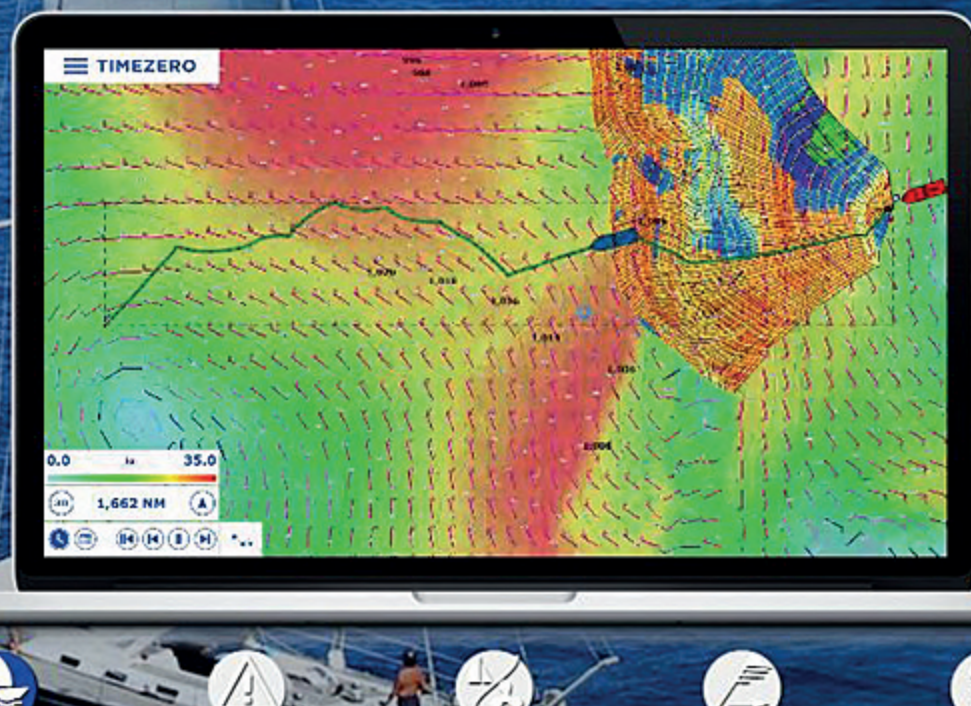
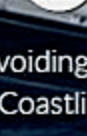


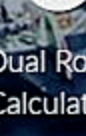
Enjoy the route while the module makes the calculation



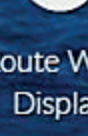
Weather Routing



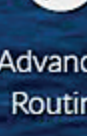
Avoiding the Coastline



Dual Route Calculation

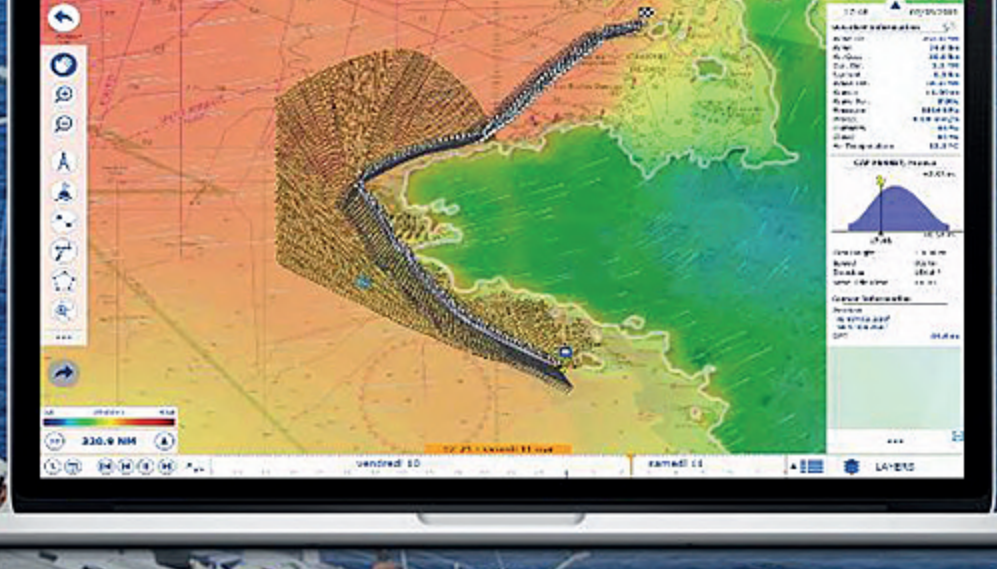


Route Wind Display



Advanced Routing

Be prepared whatever the weather throws at you. The Weather Routing module is a simple yet powerful tool which calculates the fastest route for a sailboat. Weather forecasts and polars allow the TIMEZERO software to provide an extremely accurate calculation on the fastest route from point A to point B.



Weather Routing



Avoiding the Coastline



Dual Route Calculation

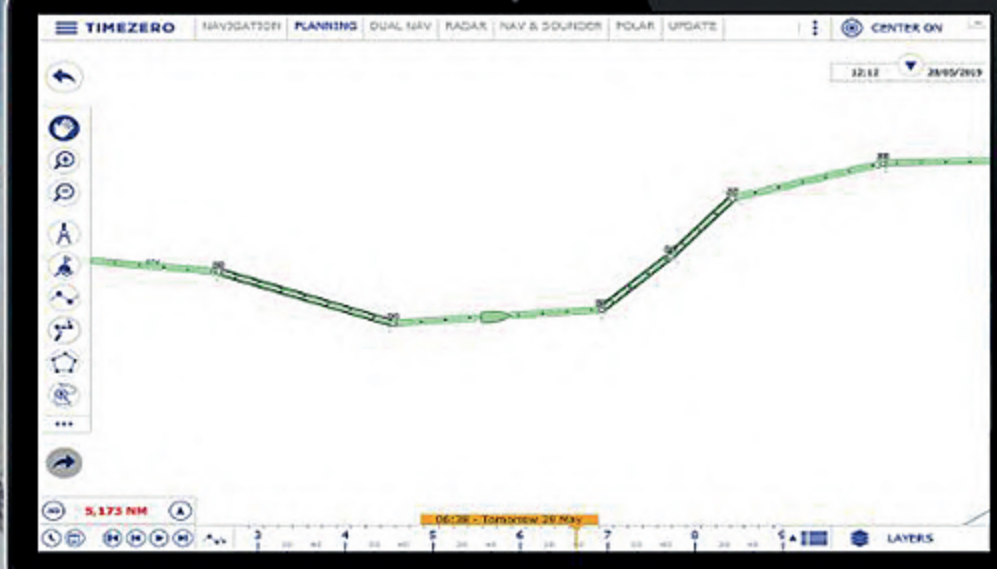


Route Wind Display



Advanced Routing

Your coastal navigation has never been this easy, safe and optimized. Our Routing calculation automatically avoids the coastline for the best route and can be done in only two clicks: one on your departure point and the other one on your arrival point!



Weather Routing



Avoiding the Coastline



Dual Route Calculation

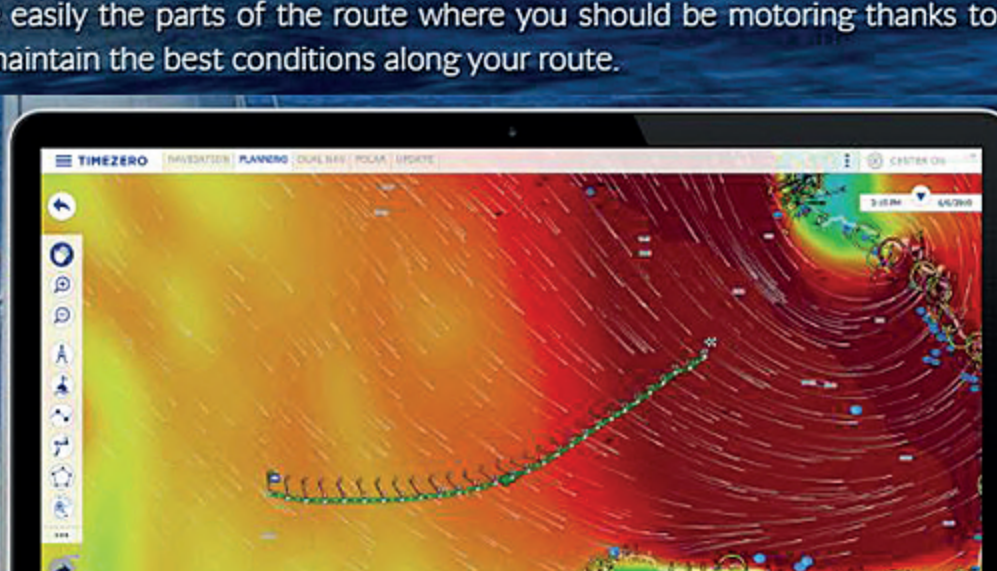


Route Wind Display

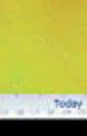


Advanced Routing

Anticipate easily the parts of the route where you should be motoring thanks to the colored legs and maintain the best conditions along your route.



Weather Routing



Avoiding the Coastline



Dual Route Calculation

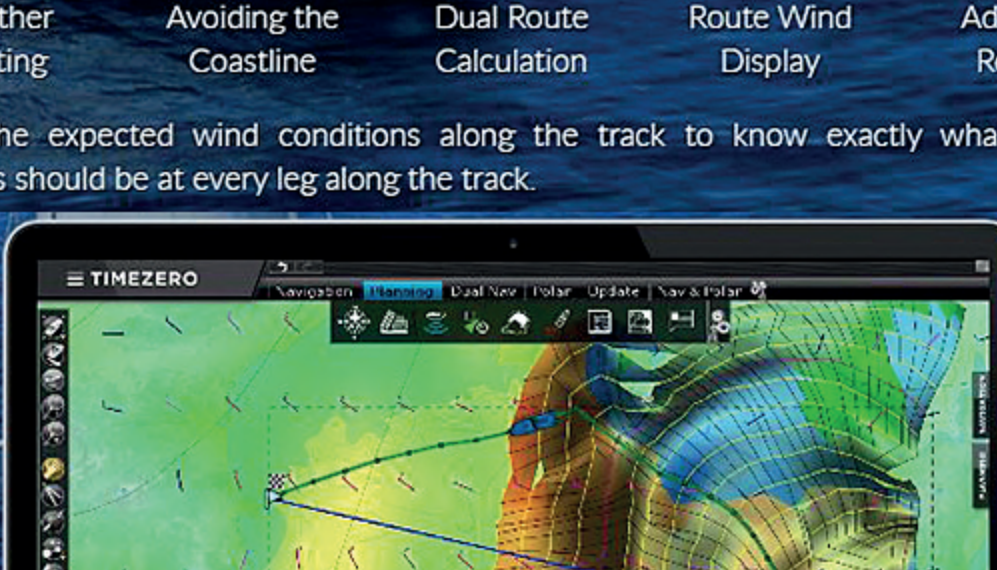


Route Wind Display



Advanced Routing

Display the expected wind conditions along the track to know exactly what the wind conditions should be at every leg along the track.



Weather Routing



Avoiding the Coastline



Dual Route Calculation



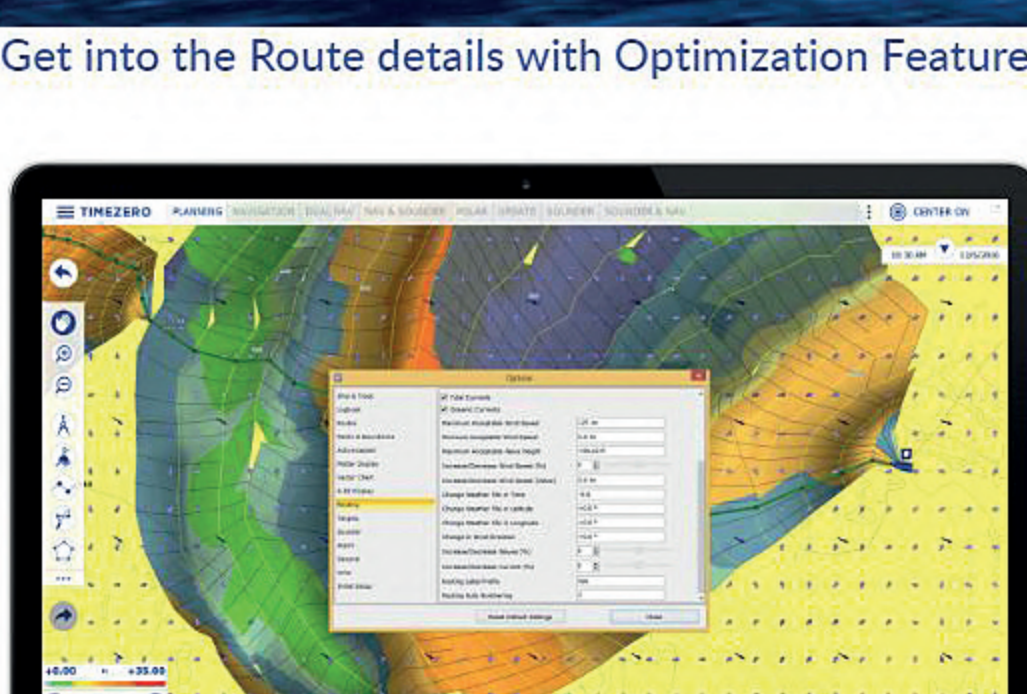
Route Wind Display



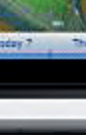
Advanced Routing

This takes the leg work out of deciding your route and lets you relax in the knowledge that you will get to your destination in the quickest time possible. Whether you are sailing to win that race or simply setting sail for new destinations, take the Weather Routing module with you.

Get into the Route details with Optimization Features



Wind Speed and direction



Alternative Routing



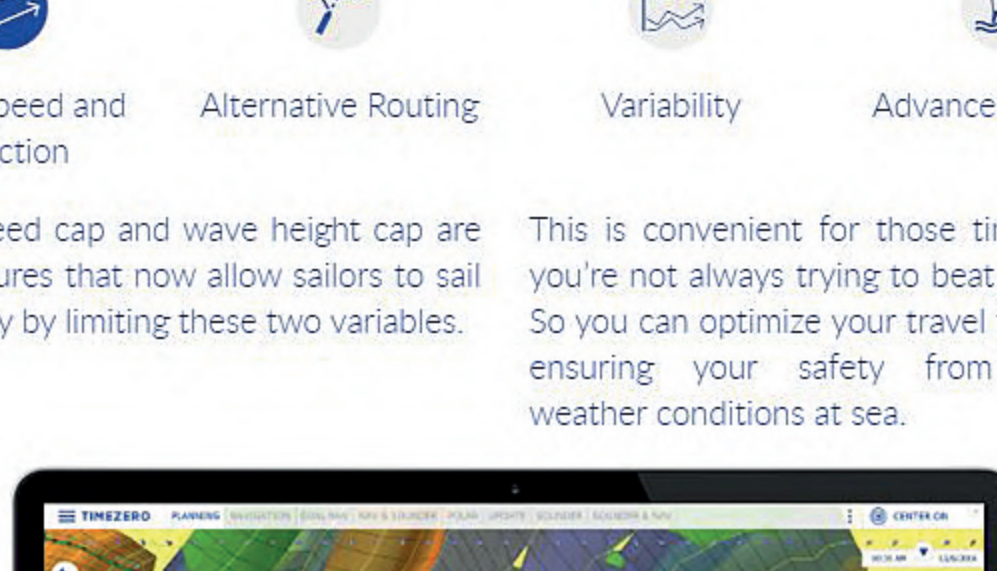
Variability



Advanced Routing

Wind speed cap and wave height cap are new features that now allow sailors to sail in security by limiting these two variables.

This is convenient for those times when you're not always trying to beat the clock. So you can optimize your travel time while ensuring your safety from adverse weather conditions at sea.



Wind Speed and direction



Alternative Routing

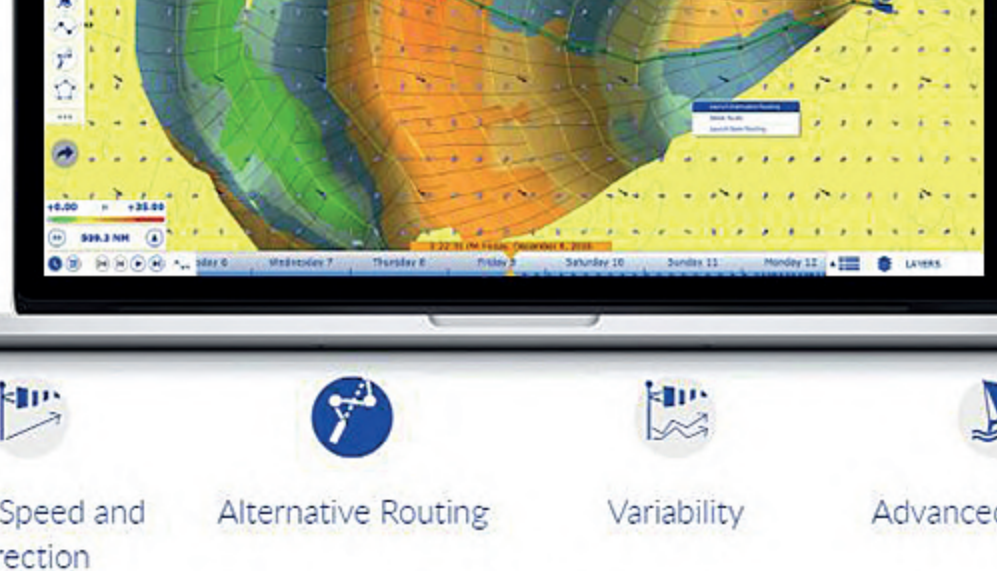


Variability



Advanced Routing

You now have the ability to check for an alternative route. A great addition if you want to avoid a certain zone such as when sailing near the coast line.



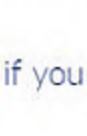
Wind Speed and direction



Alternative Routing



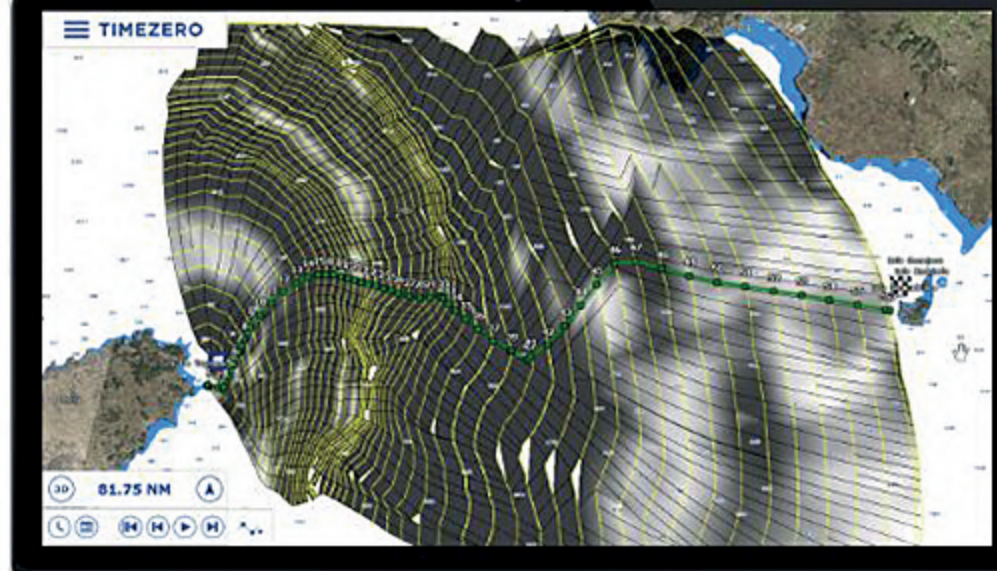
Variability



Advanced Routing

The new version of the Weather Routing module goes even further by allowing you to fine tune the calculations with even more precision. This module now includes a risk variable, a feature developed while working closely with Michel Desjoyeaux, two time Vendée Globe winner.

This feature displays zones with high risk, such as a dramatic change in wind speed and direction. It does this using an easy to identify shading spectrum, from which a decision can be made to launch an alternative route.



Wind Speed and direction



Alternative Routing



Variability



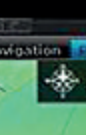
Advanced Routing

The professional version of TIMEZERO allows you to accede to advanced features, critical for sports competitions. Thanks to TZ Professional combined with the Weather Routing module, you will be able to follow targets to work on your competitors routing.

In addition, you can save your routing and those of your competitors using the layers, this way you can analyse strategies and optimize yours.



Wind Speed and direction



Alternative Routing



Variability



Advanced Routing

Learn more about other marine electronics & navigation by Nobeltec on our website.