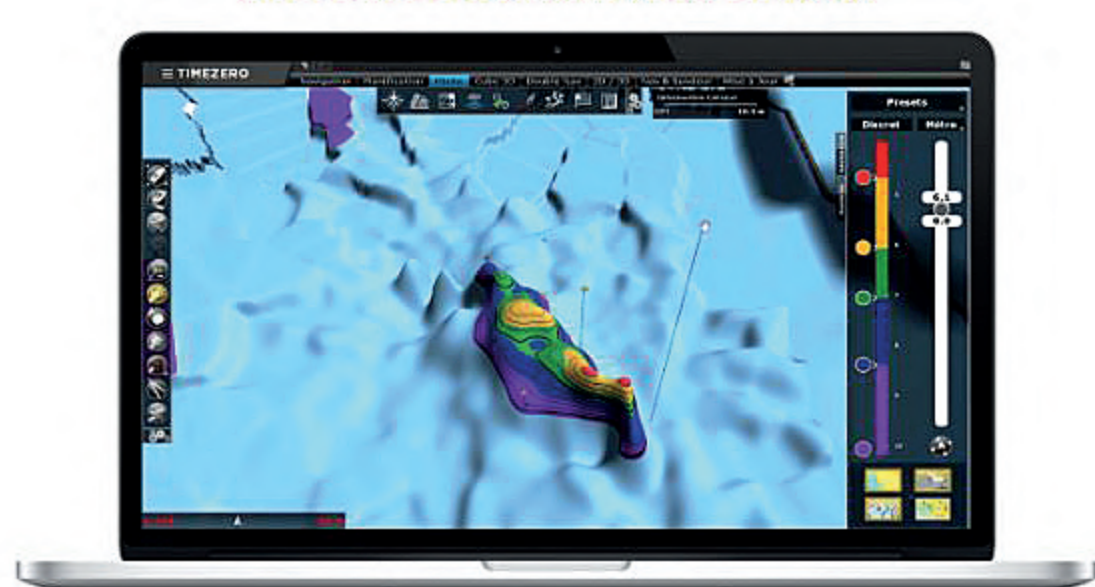


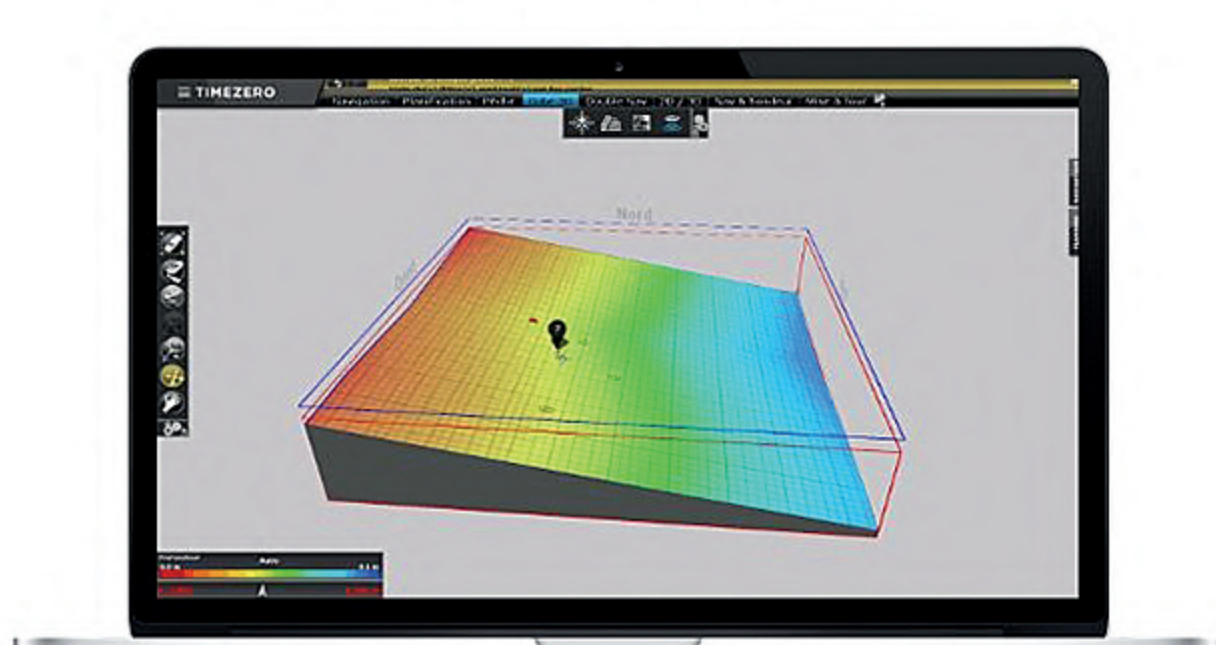
## Bottom Discrimination Display



When connected to a sounder which has a bottom discrimination feature, the PBG Module allows TIMEZERO to register the seabed information in addition to the depth. TIMEZERO can then display Bottom Classification as well as bottom hardness using a color scale on the chart.

## Data rendering optimization

TIMEZERO provides 3 different 3D databases:



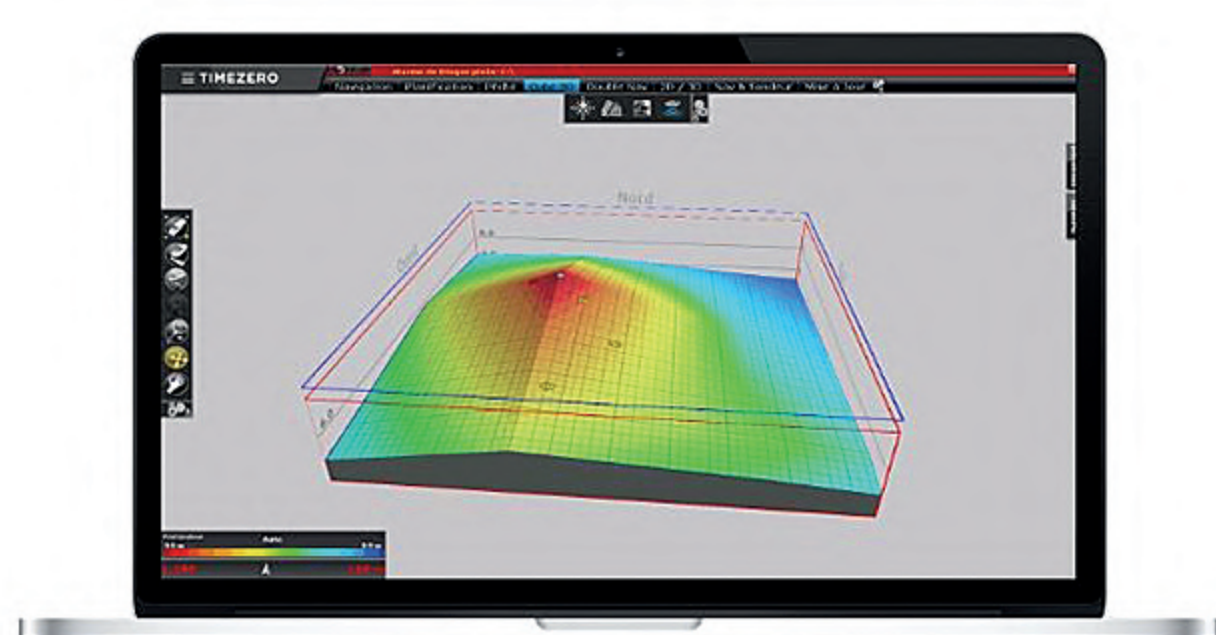
The 3D data from the chart



The 3D data from file import



The 3D data from the PBG database



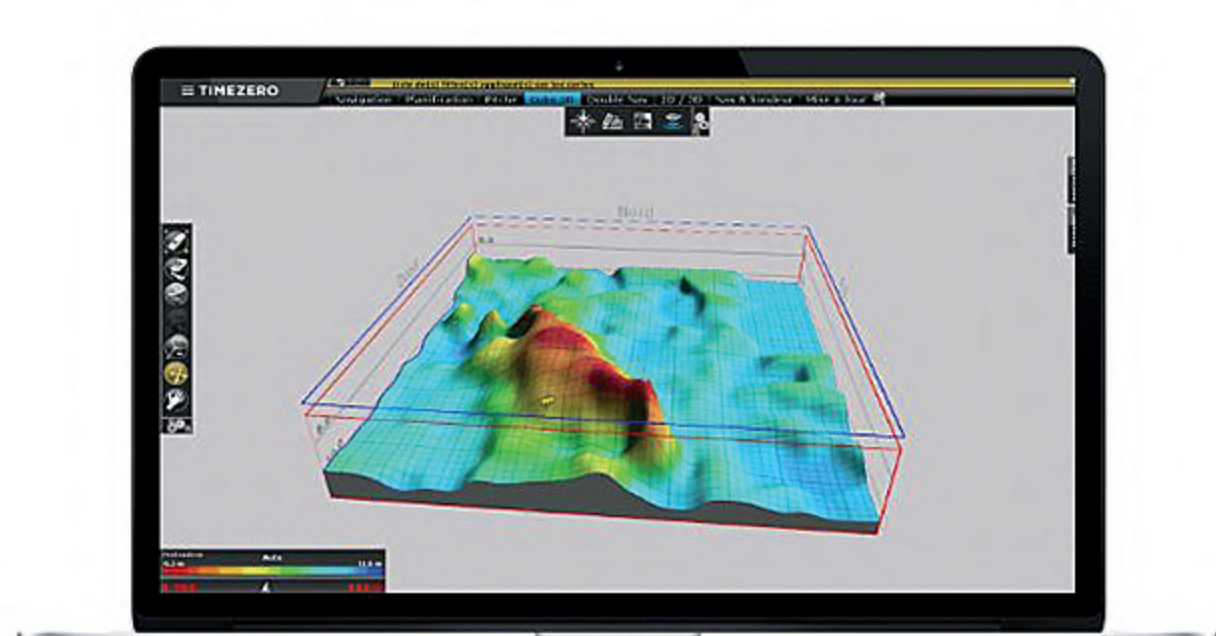
The 3D data from the chart



The 3D data from file import



The 3D data from the PBG database



The 3D data from the chart



The 3D data from file import

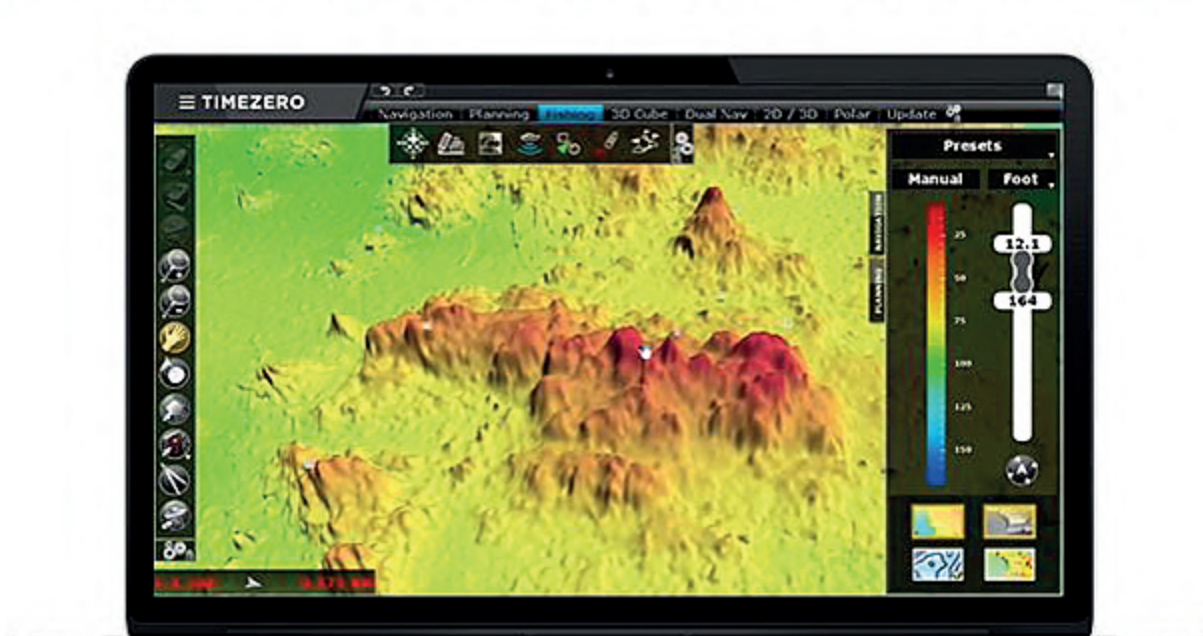


The 3D data from the PBG database

Each of these 3D databases can be activated or disabled independently. When several are selected, TIMEZERO merges them in real time on screen and automatically selecting the most accurate data available in the area.

## Data rendering optimization settings

Various settings let you adjust the display depending on the quality of data in the database:



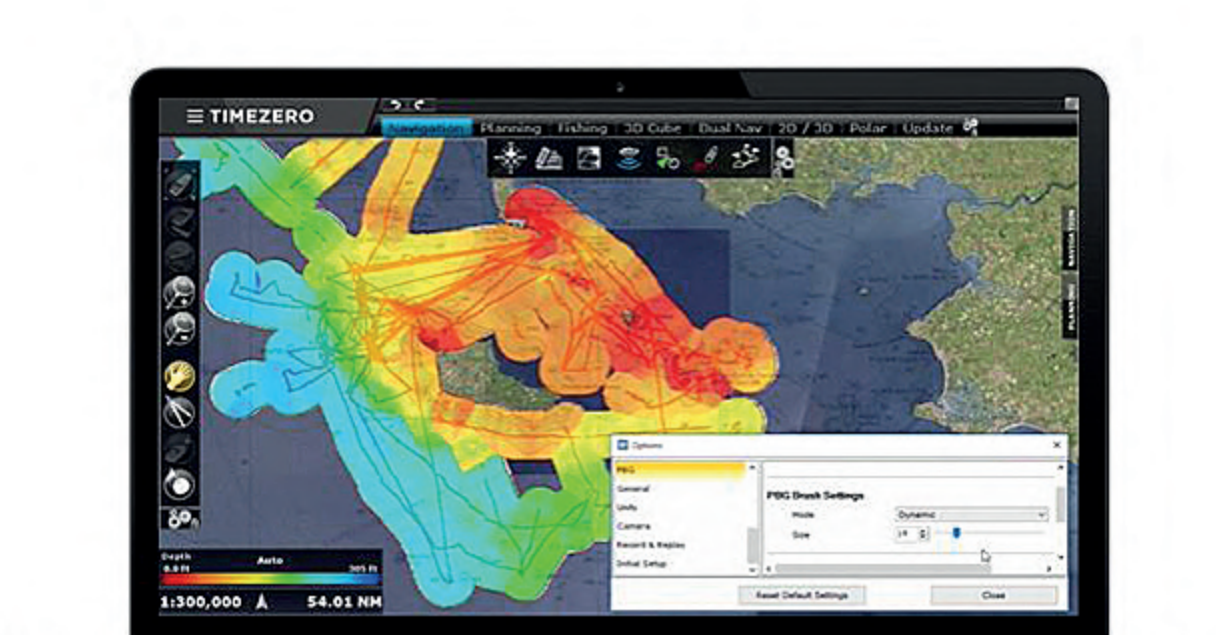
Terrain Shading



The PBG Brush Mode Setting



The PBG Brush Size Setting



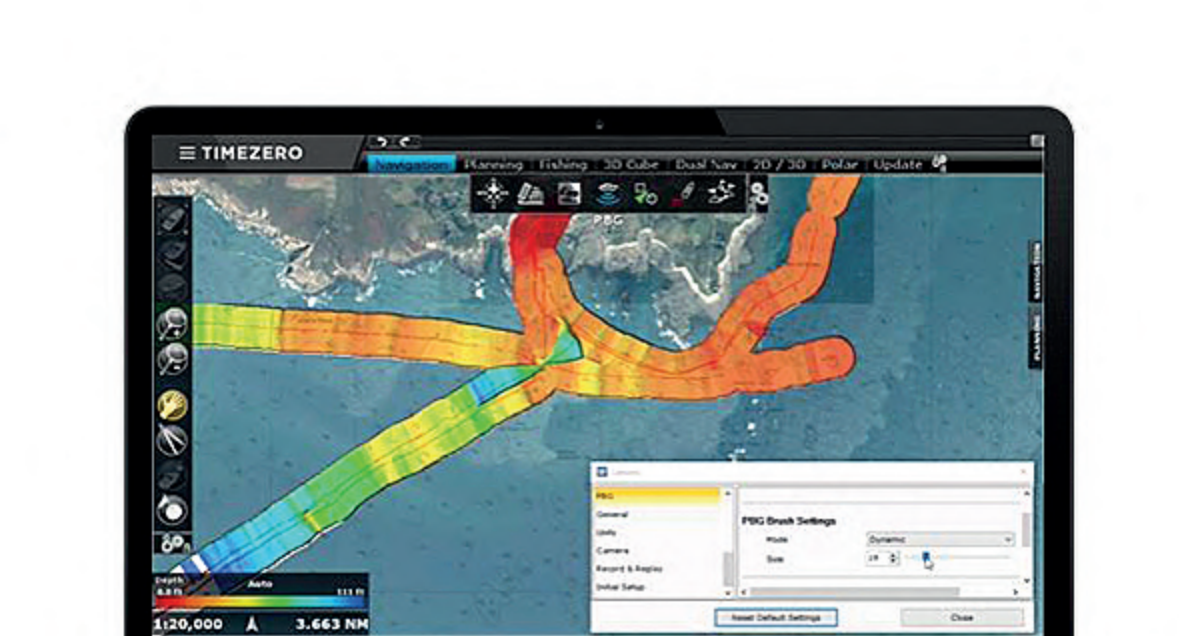
Terrain Shading



The PBG Brush Mode Setting



The PBG Brush Size Setting



Terrain Shading



The PBG Brush Mode Setting



The PBG Brush Size Setting

This cutting-edge module allows to adjust the overall "width" of PBG tracks, even when set to dynamic! Creating superior databases in less time allows to fish better in known areas (closer to the rocks) as well as discovering new fishing spots. It won't take long for you to see just how beneficial it is and how quickly you will recover your investment.