

WASSP is designed for those who need faster mapping of the seafloor



Create your bathymetric (PBG) map rapidly with the multi-beam WASSP Sonar. As the name suggests, multiple beams are sent out by the sonar at all times, in many different directions. These beams return depth data for the area all around the boat covering a much larger area in one pass, as opposed to just directly beneath your boat as is the case with "single beam" sonars. Instead of just registering a single depth reading per boat position, this Multi-Beam sonar allows you to record 112 to 224 points at a time, saving you time so that you can identify the best fishing spots sooner.

WASSP Sounder Integration

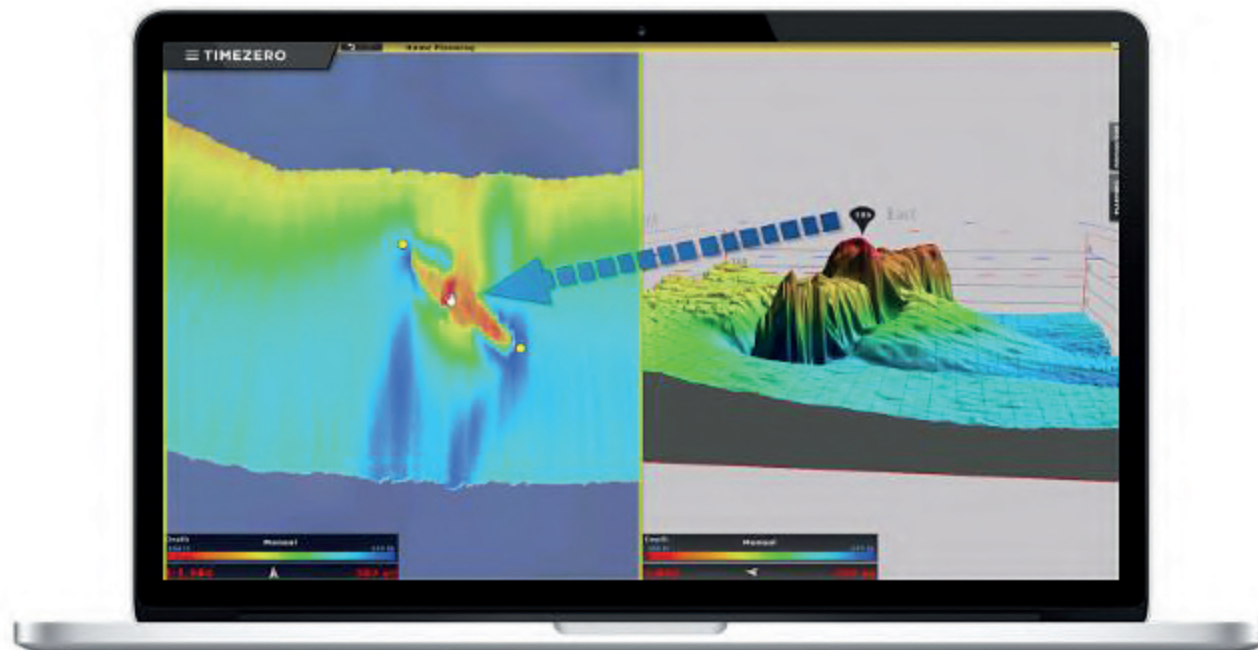
The WASSP Sonar is sold with a dedicated computer. However, you will truly transform the WASSP system by connecting a second computer running TIMEZERO with PBG Module to the sonar.

This will provide a much more powerful and detailed display of the sonar as well as the ability to view additional types of information. Take your WASSP Sonar to a new level of functionality by integrating it with TIMEZERO.



The most powerful professional tool for better results

Scanning, drawing, perfecting and analyzing the seafloor has never been more reliable. More than just estimating data, get factual insights and process them smarter.



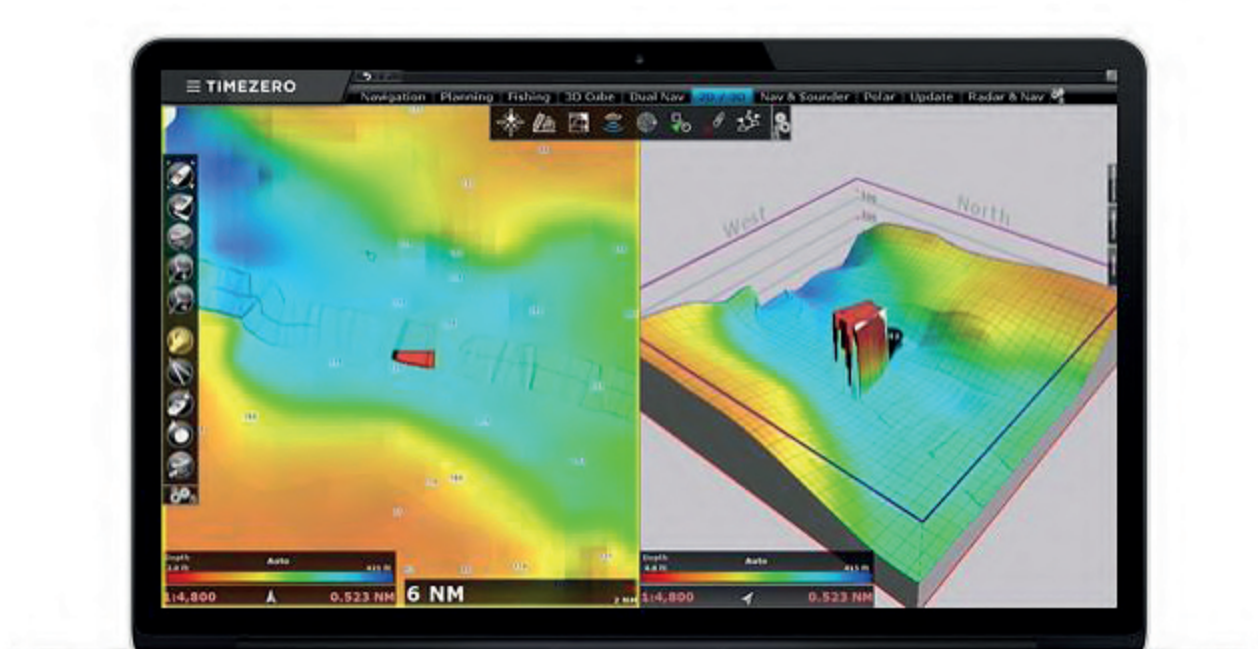
- 
 Highlights
- 
 BackScatter -
Bottom
Hardness
- 
 Extremely
Accurate
- 
 WASSP
Sonars





Much greater display resolution
 Better 3D presentation (display)
 Access to all the advanced features of TIMEZERO such as Depth Shading, Discrete Color Shading, Contour Lines, Marks Management, etc.



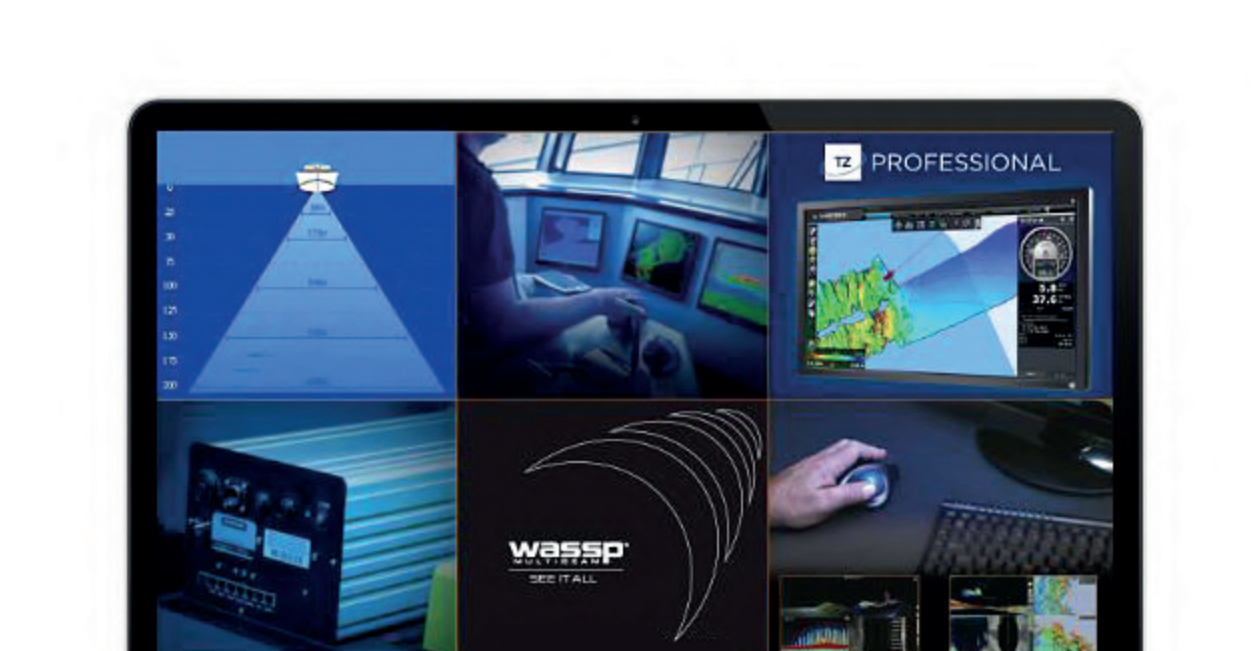
- 
 Highlights
- 
 BackScatter -
Bottom
Hardness
- 
 Extremely
Accurate
- 
 WASSP
Sonars





In addition to sending 112 to 224 depth points at the same time, WASSP also sends "Backscatter" data to TIMEZERO. This Backscatter provides information about the Bottom Hardness of the area. This means that when you integrate a WASSP Sonar with TIMEZERO, you will have 3D data and bottom hardness information (that can also be displayed in color directly on your chart). It is possible to display Backscatter data in either manual or automatic mode.



- 
 Highlights
- 
 BackScatter -
Bottom
Hardness
- 
 Extremely
Accurate
- 
 WASSP
Sonars

If for any reason you believe that any of the PBG points are erroneous, it is possible to delete WASSP PBG points in TIMEZERO by using the 'Delete PBG' tool and by drawing a free-hand area on the chart.



- 
 Highlights
- 
 BackScatter -
Bottom
Hardness
- 
 Extremely
Accurate
- 
 WASSP
Sonars

TIMEZERO is compatible with fishing WASSP models, including the legacy range. WASSP Sonars are distributed by Furuno.