

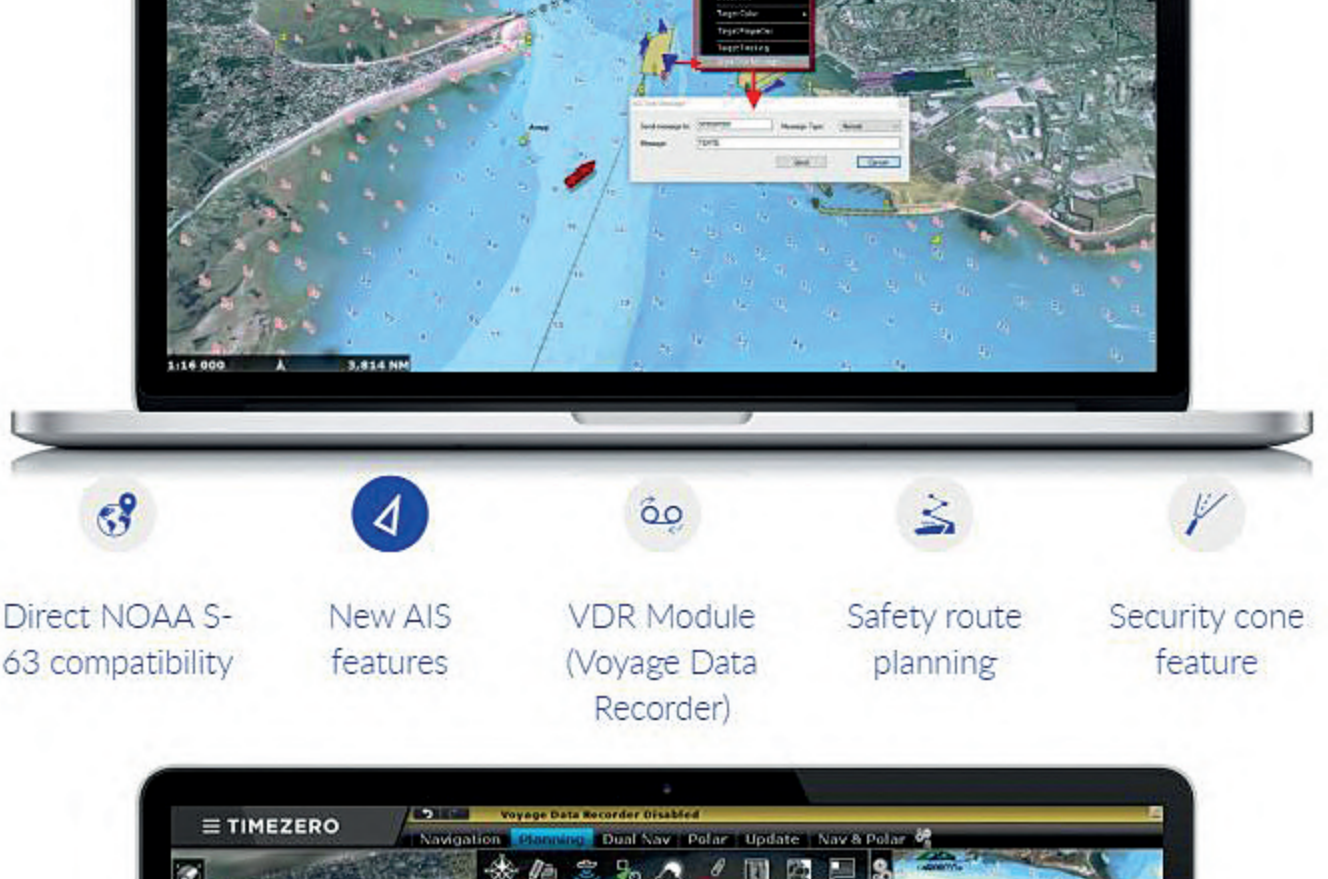
Why upgrade TZ Trident to TZ Professional?

With TIMEZERO Trident, you already had the optimized User Interface that you will keep enjoying with TZ Professional. This upgrade will also allow you using multiple monitors. Cameras, use Oceanic Weather data or display Fuel data as you may be used to.

Wondering what you will gain in addition? Here we go!



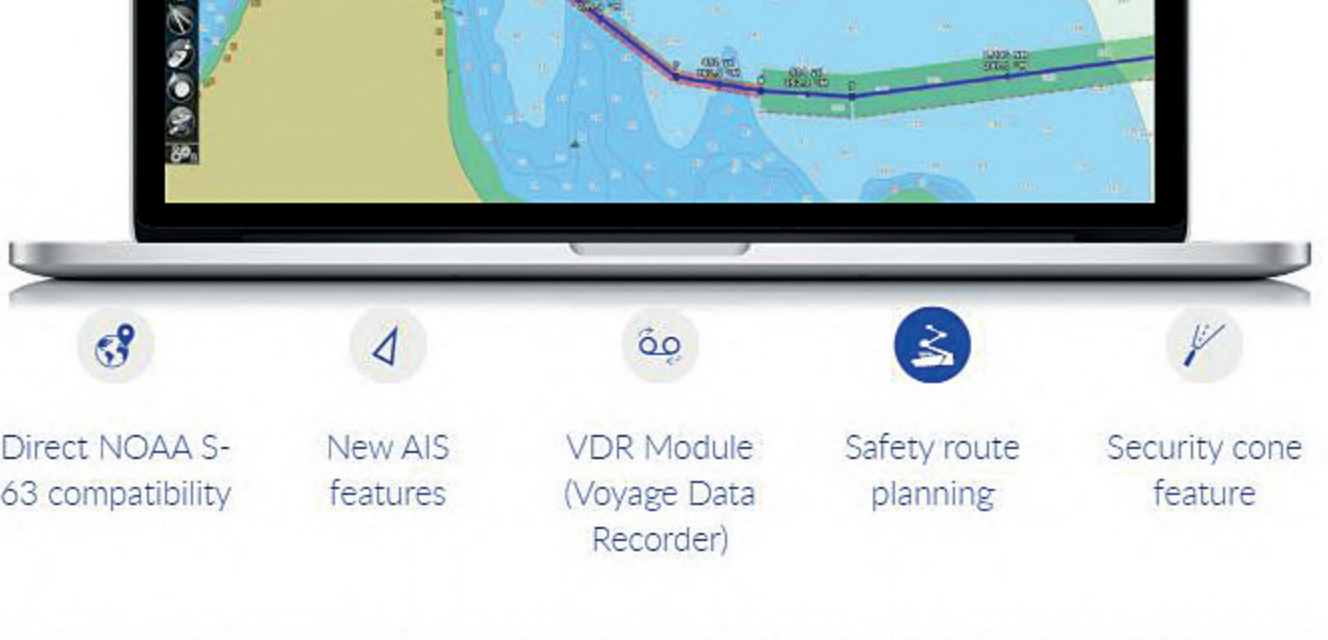
- Direct NOAA S-63 compatibility
- New AIS features
- VDR Module (Voyage Data Recorder)
- Safety route planning
- Security cone feature



- Direct NOAA S-63 compatibility
- New AIS features
- VDR Module (Voyage Data Recorder)
- Safety route planning
- Security cone feature

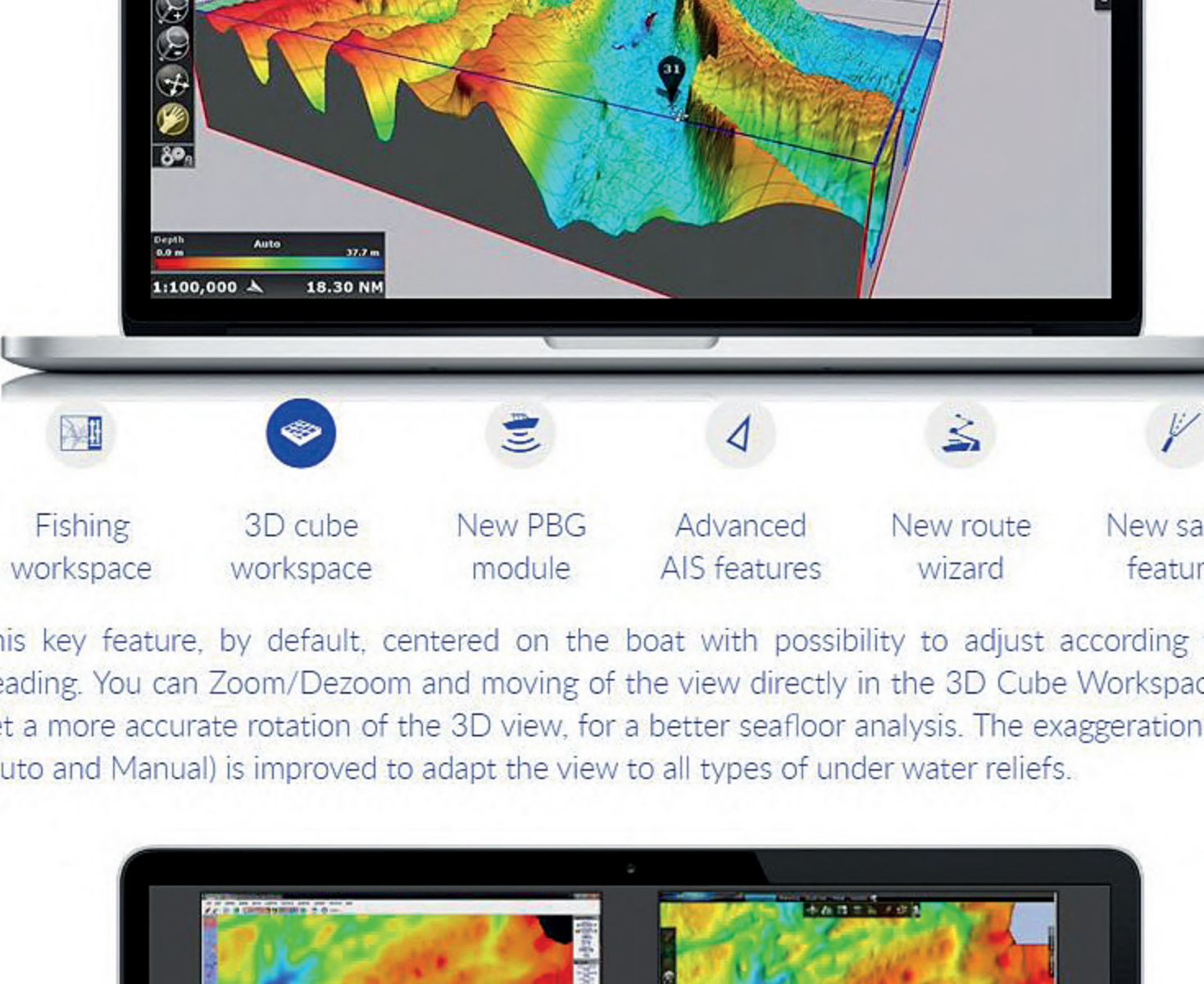


- Direct NOAA S-63 compatibility
- New AIS features
- VDR Module (Voyage Data Recorder)
- Safety route planning
- Security cone feature



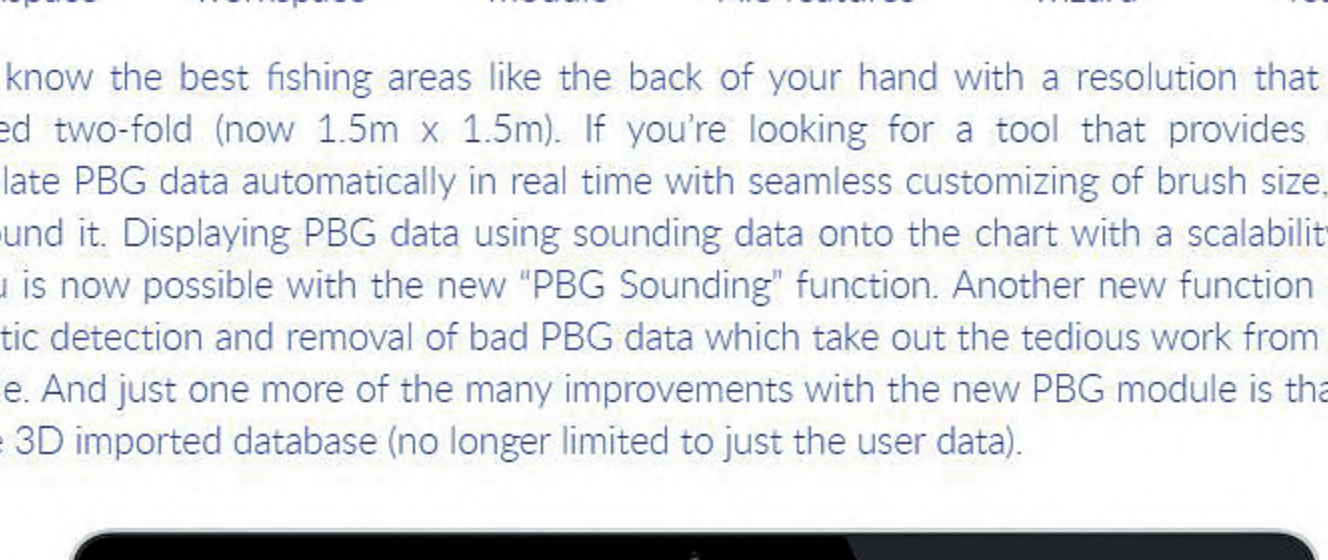
- Direct NOAA S-63 compatibility
- New AIS features
- VDR Module (Voyage Data Recorder)
- Safety route planning
- Security cone feature

Why upgrade TZ SportFishing / TZ Catch / TZ Plot to TZ Professional?

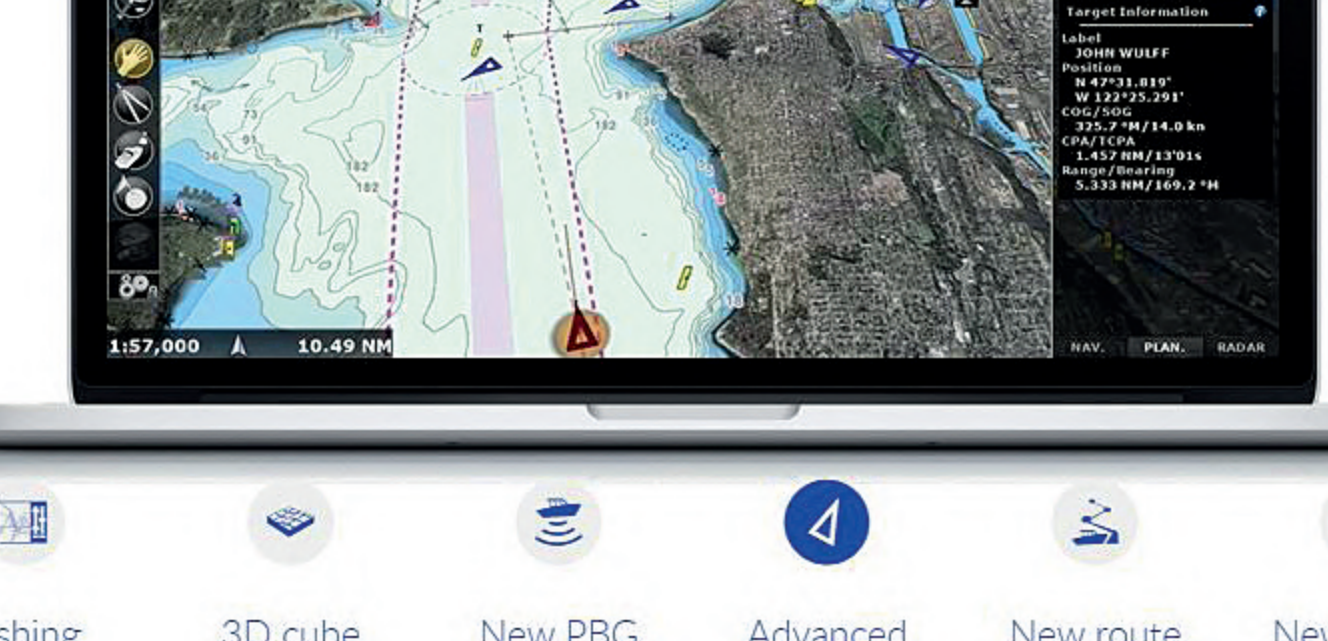


If you're always looking to get an edge in searching out the best fishing software tools then **TZ Professional** is the upgrade for Sport fishing and Commercial fishing (**TZ Plot / TZ Catch / TZ SportFishing**) that will take you further. New features plus improvements made across the board so that you can take your activity to a higher level of precision!

New features plus improvements made across the board so that you can take your activity to a higher level of precision! But how you ask? Let's take a look!

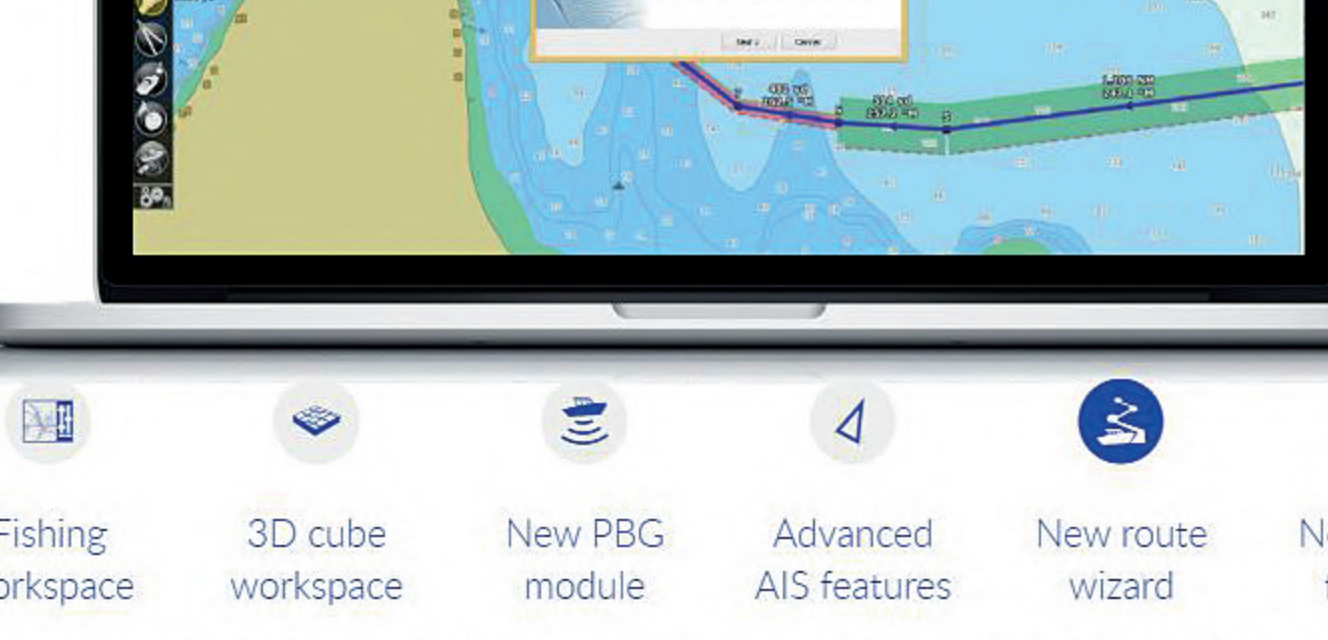


- Direct NOAA S-63 compatibility
- New AIS features
- VDR Module (Voyage Data Recorder)
- Safety route planning
- Security cone feature



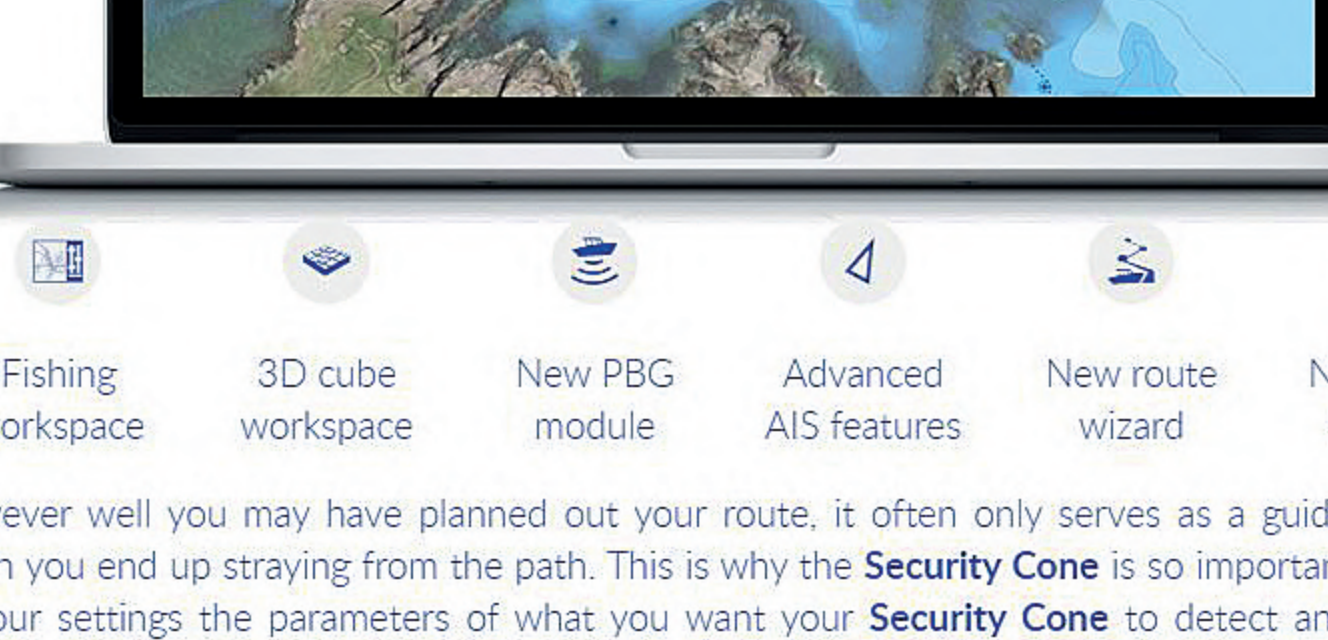
- Fishing workspace
- 3D cube workspace
- New PBG module
- Advanced AIS features
- New route wizard
- New safety features

This new Fishing Workspace is exclusively dedicated to you, the commercial fishing and sport fishing navigators (PBG module required). It simplifies the adjustment of the display settings for bathymetry and depth lines. You can now customize the seafloor display with unlimited color scale in the « Discrete » range. One of the greatest parts of this new feature is how easy it is to select and display the bathymetry of a certain depth range. Once the fishing area has been configured, you can manually configure the contour lines to be as precise as 0.2m which will display a new contour line up to every 5th contour. Moreover, if the bathymetry is not easy to see, depth lines can be manually color coded which is important if you want to be as precise as a Swiss watchmaker.



- Fishing workspace
- 3D cube workspace
- New PBG module
- Advanced AIS features
- New route wizard
- New safety features

This key feature, by default, centered on the boat with possibility to adjust according to the heading. You can Zoom/Dezoom and moving of the view directly in the 3D Workspace. You get a more accurate 3D view, for a better seafloor analysis. The exaggeration factor (Auto and Manual) is improved to adapt the view to all types of under water reliefs.



- Fishing workspace
- 3D cube workspace
- New PBG module
- Advanced AIS features
- New route wizard
- New safety features

Get to know the best fishing areas like the back of your hand with a resolution that has been increased two-fold (now 1.5m x 1.5m). If you're using a tool that provides that has been extrapolate PBG data automatically in real time with seamless customizing of brush size, then you have found it. Displaying PBG data using sounding data onto the chart with a scalability that will suit you is now possible with the new "PBG Sounding" function. Another new function allows for automatic detection and removal of bad PBG data which take out the tedious work from your daily schedule. And just one more of the many improvements with the new PBG module is that you can edit the 3D imported database (no longer limited to just the user data).

- Fishing workspace
- 3D cube workspace
- New PBG module
- Advanced AIS features
- New route wizard
- New safety features

Get the advanced AIS features with TZ Professional. You can configure your AIS class A settings with the AIS MKD feature to set up the status of an AIS class A directly within TZ Professional! We have rethought the way AIS class A status and messaging should take place to make life easier and added a simple dialog box in which you can enter and modify AIS voyage status, as well as send AIS text messages.

- Fishing workspace
- 3D cube workspace
- New PBG module
- Advanced AIS features
- New route wizard
- New safety features

A **route wizard** is displayed when a route is created offering a calculation for the optimal route based upon tides and currents (optimal departure time, arrival at high tide, etc.).

- Fishing workspace
- 3D cube workspace
- New PBG module
- Advanced AIS features
- New route wizard
- New safety features

However well you may have planned out your route, it often only serves as a guideline as and when you end up straying from the path. This is why the **Security Cone** is so important. Configure in your settings the parameters of what you want your **Security Cone** to detect and be told in advance when a potential hazard presents itself. The alarm will alert you in real time and save you from disaster. Note that these features use information within the charts based on depth and vector chart objects (obstructions, wrecks, rocks, etc.) which means they do not need any additional hardware.

Learn more about other marine electronics & navigation by Nobeltec on our website.