



PATRIOT LOW-PRO STATIONARY DOCK ASSEMBLY INSTRUCTIONS

Congratulations on your new Patriot Dock purchase! This manual contains instructions to assemble basic dock configurations for use along a typical residential shoreline. Please read through entire instruction manual before starting.



General Guidelines:

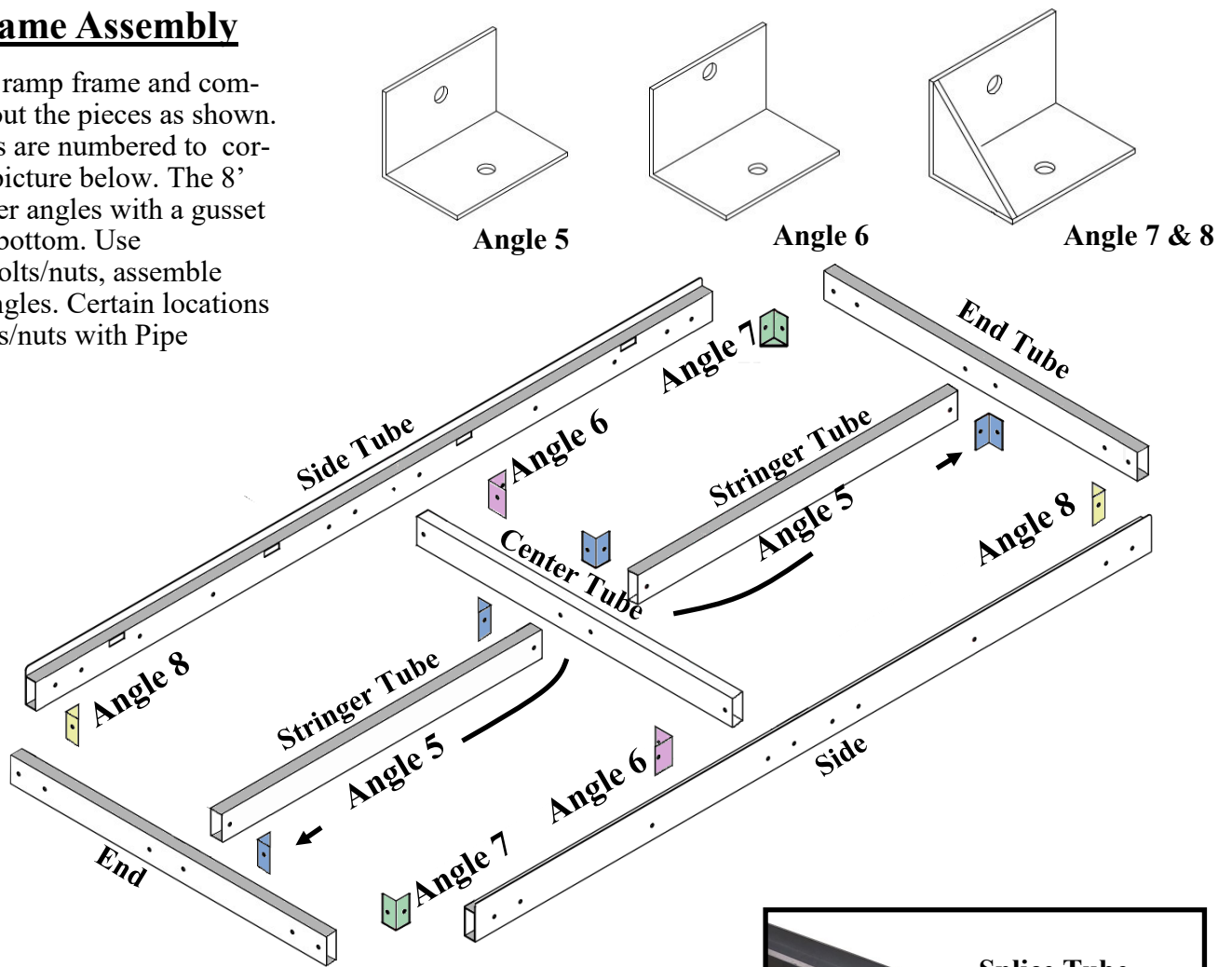
- * Wear protective gloves and appropriate safety glasses when assembling the Patriot Dock.
- * Failure to assemble the dock according to the manufacturer's instructions may cause damage to the product and will void the warranty.
- * **The Low-Pro Patriot Aluminum Dock Frames must be supported at every frame joint in the water or while in storage.** The dock is designed to carry a maximum of 500 pounds over any 4 ft x 4 ft part of the deck and a maximum of 1000 pounds between supports.
- * Never push or pull the aluminum dock with a winch, ATV or vehicle.
- * Always remove decking panels and raise pipes not supported by wheels when pulling the frame in or out of the water.
- * Docks are not to be left in freezing water.
- * All dock surfaces can be slippery when wet. Please use caution when stepping or walking on any dock surface.
- * Never leave the lake end of the dock unsupported. Always support corners of the Patio platform.
- * Roll-in kits should be installed at the very end of the dock for best stability.
- * Patriot Low-Pro docks are modular allowing for the flexibility to add length or change the configuration as desired. Additional parts may be required for certain configurations.

Tools Required: M14, M15 and M19 metric size or 9/16", 5/8" and 3/4" SAE size wrenches or ratchet w/ sockets, Rubber Mallet

Recommended Tools: Cordless Impact wrench / drill with above socket sizes, work gloves, safety glasses

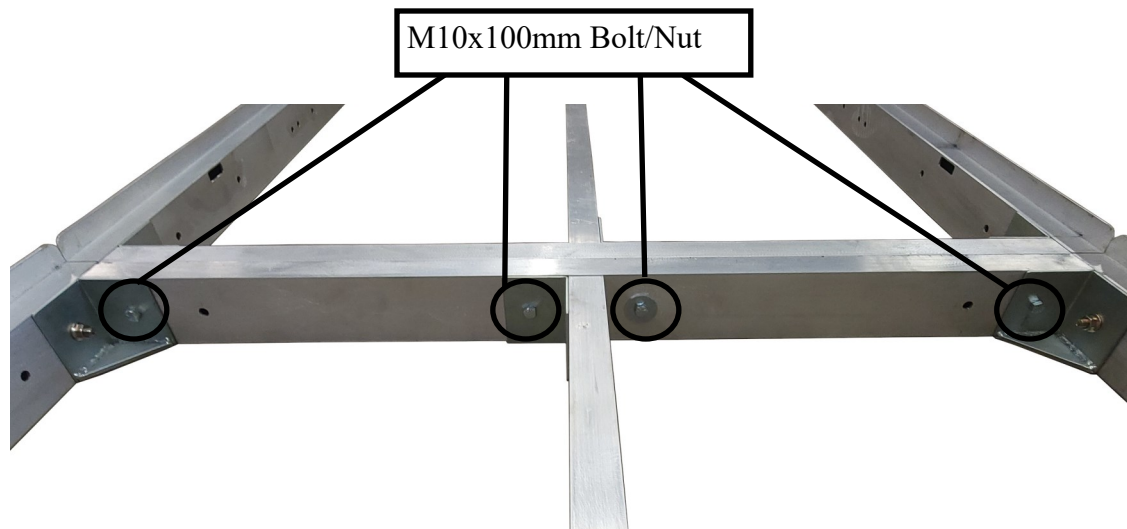
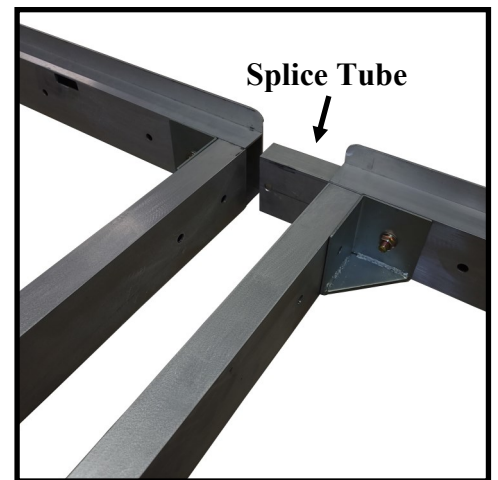
Step 1: Frame Assembly

Unwrap shore ramp frame and components. Lay out the pieces as shown. Angle brackets are numbered to correspond with picture below. The 8' ramp has corner angles with a gusset welded to the bottom. Use M10x60mm bolts/nuts, assemble frame using angles. Certain locations will share bolts/nuts with Pipe Bracket.



Step 2:

4'x8' Low-Pro Frames can be joined end-to-end (See image below) or side-by-side using four M10x100mm bolt/nut to create the desired configuration. **Fender washers must be used on both sides of the connection in locations where frames are being bolted together.** (anywhere the bolt head or nut would contact the frame without an additional material thickness like a Pipe Bracket, Hinge set, or assembly angles). When combining frames end-to-end use included Splice Tubes for extra rigidity. Splice tube will share Low Pro Frame assembly bolts.



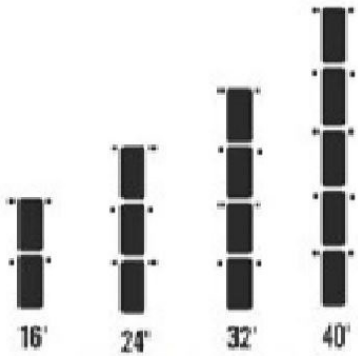
Step 3:

Attach pipe brackets to frame, some brackets will share bolts/nuts used to assemble Low Pro frame. Follow the guide below for support locations. Low pro frames must be supported every 8' extending straight, and every 4' when adding patio or "T" sections. Sleeve pipe through pipe bracket into foot plate, secure by tightening bolts. Level dock by loosening/tightening pipe bracket bolts until desired height is obtained. Cap top of pipe with Patriot Pipe Cap.

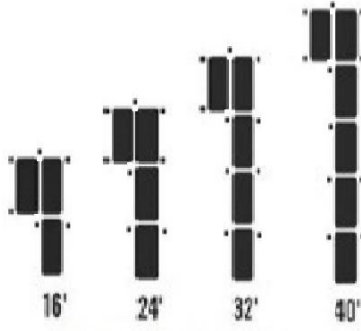
-See below for extra accessories.

-See Page 4 for Decking installation instructions.

Support Locations Straight:

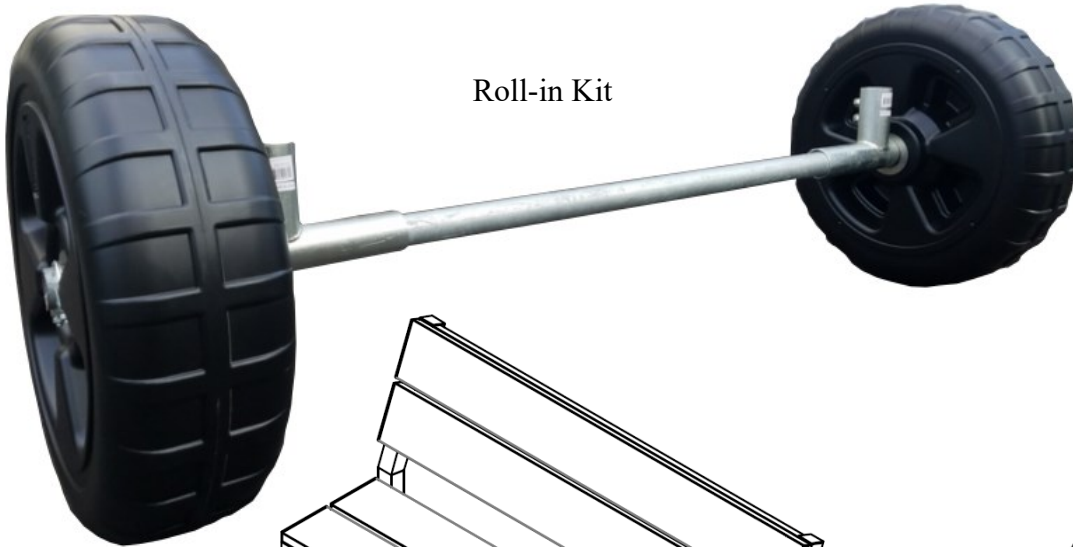


Support Locations Patio:

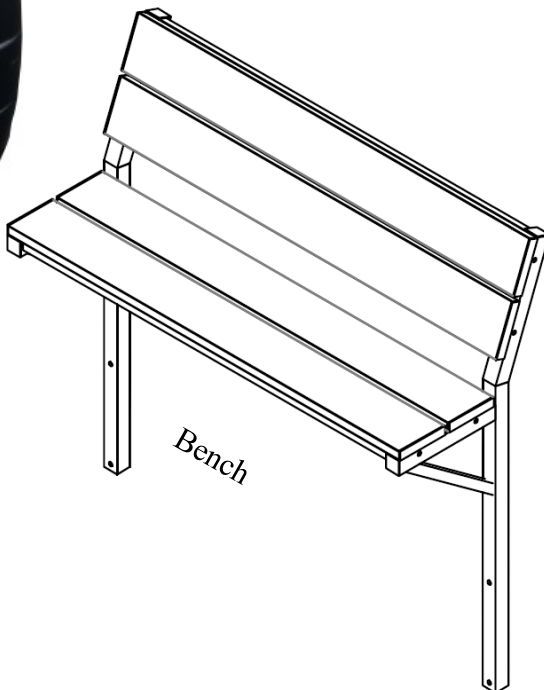


Accessories

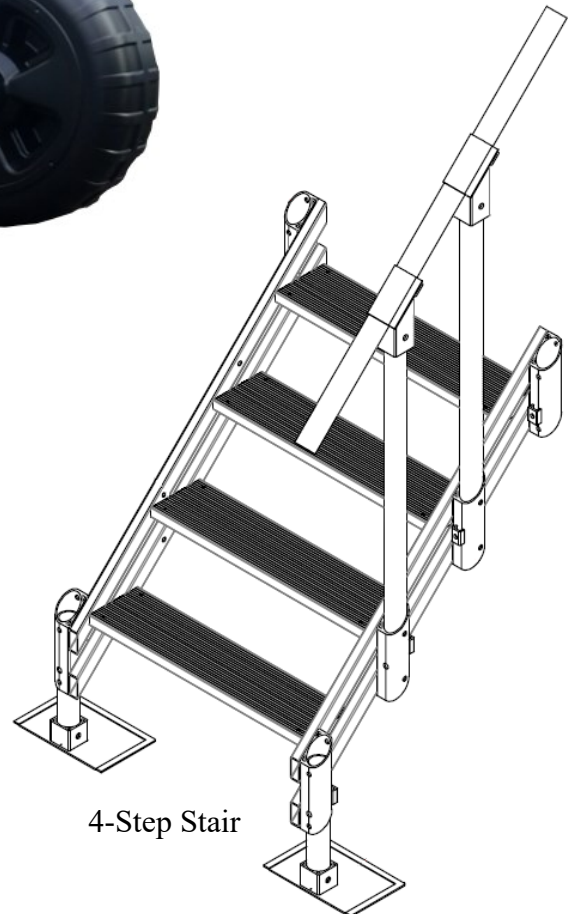
Roll-in Kit



Bench

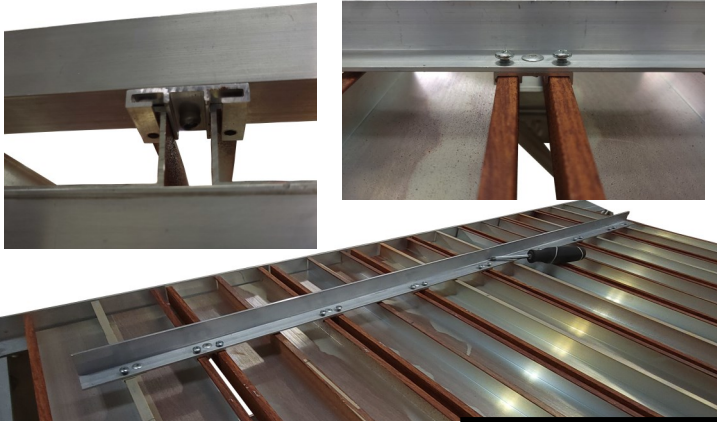


4-Step Stair



Decking Installation

Lastly, after the dock has been assembled completely, installed in the water and leveled throughout, then the pier is ready for the decking to be installed. The most efficient way to set the decking in place is to start at the shore end of the dock and set each panel in place, working towards the lake end. Removal is the opposite of installation.

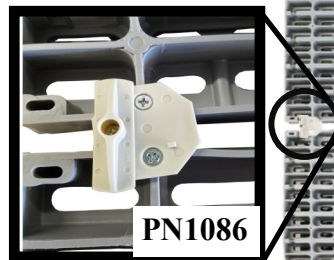
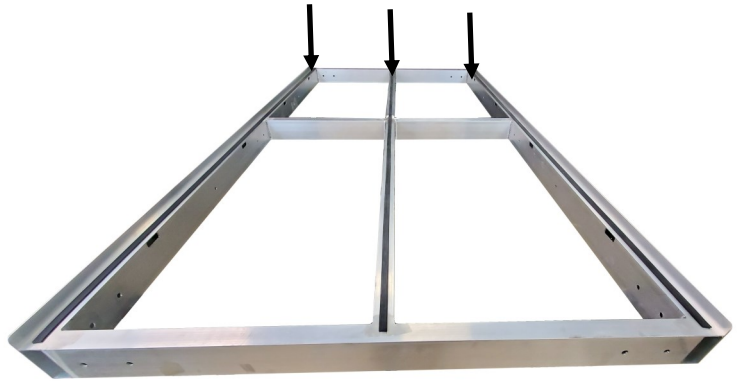


When installing Aluminum Deck Panels, first apply the adhesive backed Rubber or Cork Insulator to the aluminum frames. The Insulator is installed down the length of the 8' Side Rails and down the length of the Center Support Tubes. **(Only used with Aluminum Decking)** The Rubber Insulator is not to be installed in the direction of the 4 ft. width, only lengthwise.

To assemble the **aluminum deck panel**, lay out the deck boards, slide stinger onto boards. Position stinger approx. 12" from edge. Repeat with other stinger on opposite side. Ensure board ends are flush. Tighten set screws to secure panel.

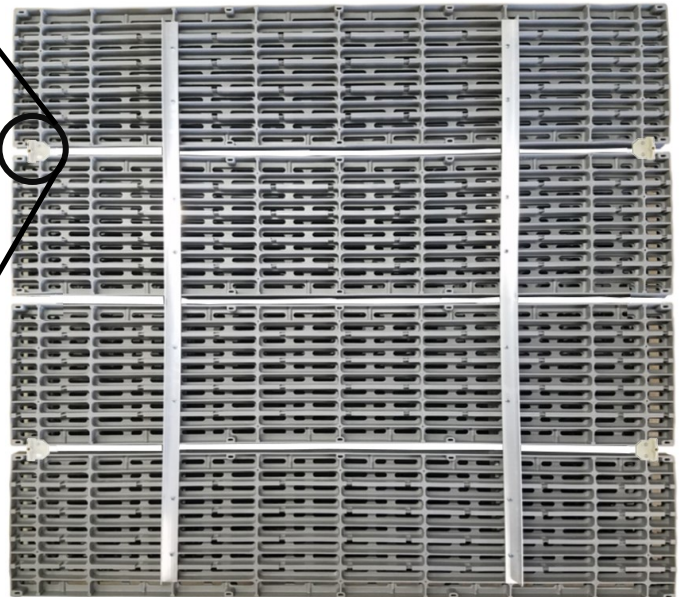
PN10868: Aluminum Deck Lockers can be installed on the panel to secure the decking to the frame.

Sold Separately



To assemble the **poly deck panel**, lay out deck boards. Align stinger with pre drilled hole on bottom side of poly board. Roughly 11-3/4" from edge. Secure with included screw.

PN10867: Deck Locker - Use the optional Deck Locker to secure the 4x4' poly deck panel onto the dock frame.



The Cedar Deck Panel is simply set in place. The cedar panels are sold untreated and can be installed as is. To extend the service life of the cedar deck, a water repellant sealant can be applied (for best results, do not use colored stain).

The Cedar Decking does not utilize a deck locker mechanism but it is recommended that the panels be secured to the frame in some capacity. (zip-ties are commonly used)

Learn more about anchors we have.