

## Scuppers & Shower Drain

### Thru-Hull Scupper for Use with Hose

- Material: Cast Bronze with Recessed Flapper  
 Finish: Plain or Chrome Plated  
 For Hose Sizes: 1-1/2" & 2"  
 Features:
- "A" Style for thinner hull thickness
  - "B" Style for greater hull thickness
  - Flange is machined to fit hull and grooved to retain bedding compound



Illustration Of Bedding Groove

Finish	Hose Size	Mounting Hole Dia.	Max. Hull Thickness	O.D. Flange	OEM Bulk Pkg.
Chrome	1-1/2"	1-7/8"	1-3/4"	3-1/8"	0377A08CHR
Plain	1-1/2"	1-7/8"	1-3/4"	3-1/8"	0377A08PLB
Chrome	2"	2-3/8"	2"	3-3/4"	0377A09CHR
Chrome	1-1/2"	1-7/8"	3"	3-1/8"	0377B08CHR
Plain	1-1/2"	1-7/8"	3"	3-1/8"	0377B08PLB



Fig. 0377A Chrome

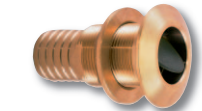


Fig. 0377A Plain



Fig. 0377B Plain & Chrome

Spare Flanged Nut See Fig. 0075, on page 105, Spare Flapper: 0333DP099A

NOTE: The Above Thru-Hull Connections For Use With Hose Are Not Recommended For Use Below The Waterline Per A.B.Y.C. "Safety Standards For Small Craft" Section H-27.



### In Hose Scupper Valve - A NEW Approach

- Material: Polymer Body and Flapper  
 Finish: Blue Body with Black Flapper Valve  
 For Hose Size: 1-1/2" and 2"  
 Installation:
- Mounts inside standard 1-1/2" or 2" hose
  - Simple replacement (if needed)



Fig. 0345 for 1-1/2" Hose (Shown)

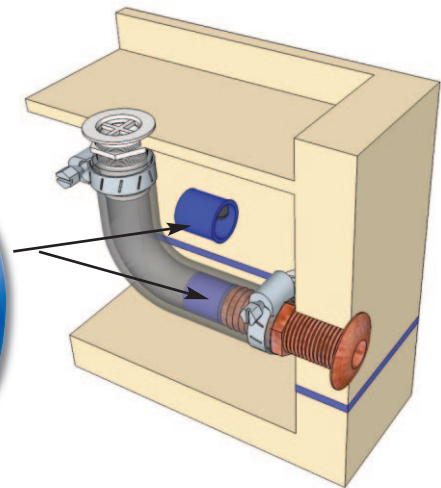


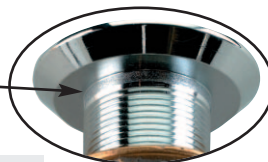
Illustration of In-Line Scupper Valve Installed

Hose Connection	Length	Width	Retail Pkg.	OEM Bulk Pkg.
1-1/2"	1-1/4"	1-9/16" Dia.	0345DP	0345
2"	1-1/4"	1-15/16" Dia.	0345DP2	0345002

### Flush Mount Drain for Use with Pipe

- Material: Cast Bronze with Brass Screen  
 Finish: Chrome Plated  
 For Pipe Sizes: 3/4" & 1-1/4" NPT/S

The exterior surface of the flange is machined flat and designed to be countersunk into the hull, resulting in a smooth external fit.



Pipe Size	Mounting Hole Dia.	Maximum Thickness	O.D. Flange	Standard Pkg.
3/4"	1"	2-3/8"	2"	0361005CHR
1-1/4"	1-5/8"	2-15/16"	2-7/8"	0361007CHR

Fig. 0361

