

polkaudio®



MOBILE MONITOR SERIES DESIGNED TO PERFORM

COAXIALS • SYSTEMS • SUBWOOFERS



Mobile Monitor Series. The new fit and performance standard is here.

If four wheels are your favorite kind of concert hall, then Polk Audio's new high-performance Mobile Monitor Series is your ticket to the best seat in the house. Using the most advanced designs and materials available, as well as the same technology found in Polk's award-winning Signature Reference Series, Polk Audio's MM Series offers you unmatched performance at a price you have to hear to believe.

Real performance is in the countless details we obsess over.

Our Research & Development department optimized every performance parameter so every MM speaker would work with the latest thinking in automobile design. All models in the MM Series use newly developed carbon composite basket structures for lighter weight, shallower mounting depth and superior rigidity. Unlike stamped steel designs found at the same price, Polk's MM Series carbon composite baskets are significantly more rigid and robust, which results in lower distortion and countless years of reliability. And the MM Series' extra-shallow mounting depth means they'll fit into virtually any installation and take up less space with half the weight of most other speakers.

The legendary Polk® sound comes with years of legendary Polk reliability.

Butyl nitrate rubber surrounds provide superb reliability in any mobile environment for years of great Polk sound. All models also feature oversized voice coils and polyamide/fiberglass formers for superior power handling and lower distortion. All full range models (except the MM461P) employ incredibly strong and efficient neodymium magnets instead of the bulky conventional ceramic ferrite structures normally used. This technology was first used in the Polk Audio Signature Reference Series and results in much lower weight and size, resulting in greatly improved fit and ease of installation.

The new Mobile Monitor Series high-performance speakers truly offer the best of both worlds in value and performance and are waiting for a test drive at your local Polk Audio dealer.



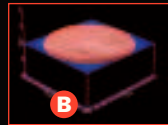
The MM's extra-shallow mounting depth means every speaker will fit into virtually any installation and take up less space with half the weight of most other speakers.

Unlike stamped steel designs found at the same price, Polk's MM Series carbon composite baskets are dramatically more rigid and robust, which results in lower distortion and countless years of reliability.

All Mobile Monitor Speakers have these proven high performance features:

High efficiency design means less amplifier power is needed for more audio output. While a separate amp is recommended on full range models for the ultimate in performance, MM Loudspeakers will sound wonderful when driven by aftermarket head units or factory installed electronics.

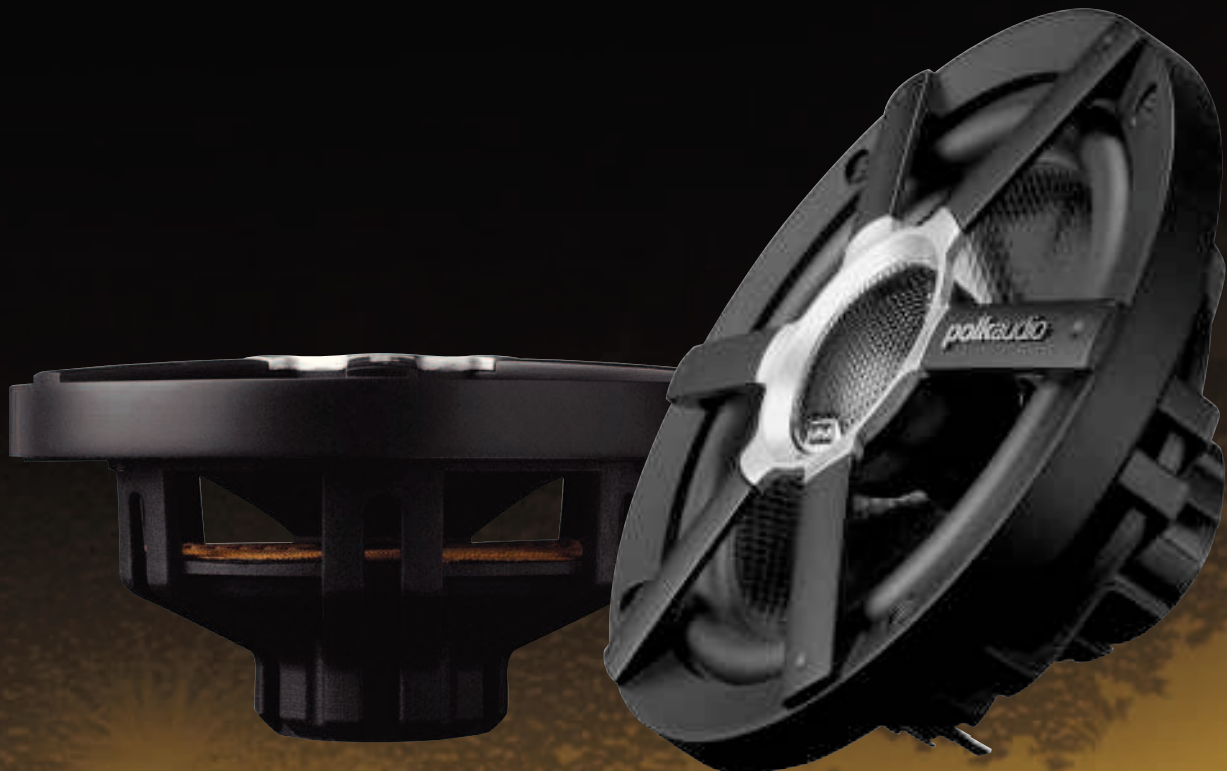
Dynamic Balance® driver technology—All MM Series drivers, tweeters and subwoofers incorporate Dynamic Balance technology, which is a state-of-the-art proprietary Polk technology developed in conjunction with the Johns Hopkins University. The goal was to perfect the method of analyzing a speaker's microscopic behavior using laser Interferometry in order to optimize the system's performance. Polk engineers were able to view the entire vibrating surface of a driver or tweeter and see the resonance which develops on speaker cones as they move. Resonance is the root cause of frequency response distortions (A). Dynamic Balance enables us to tune out unwanted resonance and distortion with the perfect combination of materials, geometry and construction techniques (B). The result is pure, distortion free sound.



Klippel Optimization—In order for a driver to reproduce complex sounds accurately, the cone must move in exactly the same distance and manner in both directions of travel.



The Klippel distortion analyzer—a device that uses a laser and sophisticated software to do large-scale analysis of drivers in motion, enables us to optimize the motor structure, voice coil alignment and suspension to yield the best possible performance.



polkaudio®



MOBILE MONITOR



“Hats off to the engineers at Polk—
the MM1240 is definitely a winner...”

—Dave MacKinnon, Performance Auto & Sound,
August 2008





MM Series Full Range Speakers. All the performance without the weight.

MM Series full range speakers include configurations from oval models, coaxial speakers and component systems covering a wide variety of applications. Every component has been meticulously optimized to bring you the best sound quality. Compact in-line crossovers are easy to hide and use precision components such as air core inductors. The speaker's 1" silk dome tweeters provide optimal dispersion, while glass composite cones provide superior midrange and bass punch. The speakers use advanced materials such as neodymium magnets, glass composite cones and carbon composite baskets. The benefits are a lighter and slimmer speaker that fits more applications. And less weight in your sound system also means higher performance for your vehicle.

Woven glass composite cones feature tremendous stiffness-to-mass ratio. Lower cone mass brings you faster transient response and finer detail.

Rugged high quality grilles are included with round models and MM691.

Large diameter voice coils (30mm) and polyamide/fiberglass former increase reliability and power handling so you can crank up your tunes.

Swivel tweeters on coax models allow you to precisely direct the highs. Flush and surface mount tweeter cups are included with component systems.

Neodymium magnets are a rare material found on both the tweeter and driver*. It replaces the traditional bulky ceramic magnet with a much more powerful unit at half the weight. *except MM461P

In-line crossovers use high quality components such as air core inductors for superior signal transfer. The crossover is easily hidden for simple installation. Component models feature tweeter level adjustment.



MM691



MM Series High Performance Subwoofers. Don't be fooled by their light weight and easy installation. They pound.

MM Series subwoofers are the latest and greatest. We've reduced the mounting depth to near 4 1/2" and raised the performance in a very small box.

Polymer woofer cones and butyl rubber surrounds will survive the rigors of harsh automotive environments and not break down over time.

Catenary shaped cone provides rigidity and strength. At each point in a catenary structure, opposing tension and compression forces are balanced. A catenary shape maximizes the stiffness of the cone without resorting to using more material that would add mass. The woofer cone won't flex giving you tight, accurate bass.

High temperature copper voice coil (50mm) and polyamide former withstands high powered use while maintaining extremely low distortion for bass punch and output.

Available in single and dual voice coil configurations allowing flexible wiring options in all sizes.

Heavy duty input terminals accommodate speaker wire up to 8 AWG or twisted pairs of 12 AWG.

Super shallow mounting depth thanks to advanced carbon composite basket materials. All models require a top mounting depth around 4 1/2" (see spec sheet for actual mounting depths).

Available matching grilles add style and protection to your subwoofer.



MM1040



MM461P



MM521



MM571



MM651

Full Range

MM461P	4" x 6" Plate	Power Handling: 150W Peak Power Handling: 50W RMS Frequency Response: 70Hz - 25kHz Sensitivity: 90dB Impedance: 4 Ohms	Driver Complement: 3 1/2" (87.5mm) mid/woofer Tweeter Complement: 3/4" (19mm) soft dome tweeter Cutout Dimensions: 3 7/8" x 5 15/16" (115.6mm x 179.7mm) Mounting Depth (top): 1 11/16" (43mm) Mounting Depth (bottom): n/a
MM521	5 1/4" Coaxial	Power Handling: 200W Peak Power Handling: 90W RMS Frequency Response: 50Hz - 25kHz Sensitivity: 92dB Impedance: 2.7 Ohms	Driver Complement: 5 1/4" (131.03mm) mid/woofer Tweeter Complement: 1" (25mm) soft dome tweeter Cutout Dimensions: 4 5/8" (117mm) Mounting Depth (top): 2 3/8" (60mm) Mounting Depth (bottom): 2 13/16" (71mm)
MM571	5" x 7" Coaxial	Power Handling: 200W Peak Power Handling: 90W RMS Frequency Response: 38Hz - 25kHz Sensitivity: 92dB Impedance: 2.7 Ohms	Driver Complement: 5" x 7" (125mm x 175mm) mid/woofer Tweeter Complement: 1" (25mm) soft dome tweeter Cutout Dimensions: 4 5/8" x 7 3/16" (117.5mm x 182.6mm) Mounting Depth (top): 2 5/8" (67mm) Mounting Depth (bottom): 3" (76mm)
MM651	6 1/2" Coaxial	Power Handling: 200W Peak Power Handling: 100W RMS Frequency Response: 40Hz - 25kHz Sensitivity: 94dB Impedance: 2.7 Ohms	Driver Complement: 6 1/2" (162.5mm) mid/woofer Tweeter Complement: 1" (25mm) soft dome tweeter Cutout Dimensions: 5 1/16" (128.6mm) Mounting Depth (top): 2 5/8" (67mm) Mounting Depth (bottom): 2 7/8" (73mm)
MM691	6" x 9" 3-Way	Power Handling: 300W Peak Power Handling: 125W RMS Frequency Response: 30Hz - 25kHz Sensitivity: 94dB Impedance: 2.7 Ohms	Driver Complement: 6" x 9" (150mm x 225mm) mid/woofer Tweeter Complement: (1) 3/4" (19mm) & (1) 1" (25mm) soft dome tweeter Cutout Dimensions: 5 1/2" x 8 3/8" (140mm x 213mm) Mounting Depth (top): 3 3/16" (81mm) Mounting Depth (bottom): 3 1/2" (89mm)
MM5251	5 1/4" Component System	Power Handling: 200W Peak Power Handling: 90W RMS Frequency Response: 50Hz - 25kHz Sensitivity: 92dB Impedance: 2.7 Ohms	Driver Complement: 5 1/4" (131.03mm) mid/woofer Tweeter Complement: 1" (25mm) soft dome tweeter Cutout Dimensions: 4 5/8" (117.5mm) Mounting Depth (top): 2 3/8" (60mm) Mounting Depth (bottom): 2 13/16" (71mm)
MM6501	6 1/2" Component System	Power Handling: 250W Peak Power Handling: 125W RMS Frequency Response: 40Hz - 25kHz Sensitivity: 94dB Impedance: 2.7 Ohms	Driver Complement: 6 1/2" (162.5mm) mid/woofer Tweeter Complement: 1" (25mm) soft dome tweeter Cutout Dimensions: 5 1/16" (128.6mm) Mounting Depth (top): 2 5/8" (67mm) Mounting Depth (bottom): 2 7/8" (73mm)

MM691



MM5251



MM6501





MM840 & MM840DVC



MM1040 & MM1040DVC



MM1240 & MM1240DVC



MM1540 & MM1540DVC

Subwoofer

MM840	8" Subwoofer	Power Handling: 500W Peak Power Handling: 250W RMS Frequency Response: 26Hz - 200Hz Sensitivity: 90dB Impedance: 4 Ohms	Oneway/Excursion (Linear): 3/4" (20mm) Voicecoil Diameter: 1 1/2" (38.1mm) Mounting Depth (top mount): 4 1/8" (105mm) Mounting Depth (bottom mount): 4 11/16" (119mm) Cutout Diameter: 7 1/8" (181mm)	Fs (Hz): 35Hz Re: 3.25 Ohms Le: 2.3mH Qms: 5.5 Qes: 0.7	Qts: 0.6 Vas: 0.54ft ³ (15.4L) Sd: 35.65in ² (230cm ²)
MM840DVC	Dual 4 Ω Voice Coil 8" Subwoofer	Power Handling: 500W Peak Power Handling: 250W RMS Frequency Response: 26Hz - 200Hz Sensitivity: 90dB Impedance: 8 Ohms (Series); 2 Ohms (Parallel)	Oneway/Excursion (Linear): 3/4" (20mm) Voicecoil Diameter: 1 1/2" (38.1mm) Mounting Depth (top mount): 4 1/8" (105mm) Mounting Depth (bottom mount): 4 11/16" (119mm) Cutout Diameter: 7 1/8" (181mm)	Fs (Hz): 35Hz Re: 6.25 Ohms Le: 2.47mH Qms: 5.5 Qes: 0.62	Qts: 0.59 Vas: 0.55ft ³ (15.8L) Sd: 35.65in ² (230cm ²)
MM1040	10" Subwoofer	Power Handling: 700W Peak Power Handling: 350W RMS Frequency Response: 24Hz - 200Hz Sensitivity: 91dB Impedance: 4 Ohms	Oneway/Excursion (Linear): 1" (25mm) Voicecoil Diameter: 2" (50mm) Mounting Depth (top mount): 4 1/2" (114mm) Mounting Depth (bottom mount): 5 1/8" (130mm) Cutout Diameter: 9 1/16" (230mm)	Fs (Hz): 35Hz Re: 3.25 Ohms Le: 3.0mH Qms: 3.0 Qes: 0.53	Qts: 0.45 Vas: 0.65ft ³ (18L) Sd: 54.25in ² (350cm ²)
MM1040DVC	Dual 4 Ω Voice Coil 10" Subwoofer	Power Handling: 700W Peak Power Handling: 350W RMS Frequency Response: 24Hz - 200Hz Sensitivity: 91dB Impedance: 8 Ohms (Series); 2 Ohms (Parallel)	Oneway/Excursion (Linear): 1" (25mm) Voicecoil Diameter: 2" (50mm) Mounting Depth (top mount): 4 1/2" (114mm) Mounting Depth (bottom mount): 5 1/8" (130mm) Cutout Diameter: 9 1/16" (230mm)	Fs (Hz): 35Hz Re: 6.25 Ohms Le: 5.1mH Qms: 3.0 Qes: 0.59	Qts: 0.5 Vas: 0.65ft ³ (18L) Sd: 54.25in ² (350cm ²)
MM1240	12" Subwoofer	Power Handling: 850W Peak Power Handling: 425W RMS Frequency Response: 22Hz - 200Hz Sensitivity: 92dB Impedance: 4 Ohms	Oneway/Excursion (Linear): 1" (25mm) Voicecoil Diameter: 2" (50mm) Mounting Depth (top mount): 4 5/8" (117.5mm) Mounting Depth (bottom mount): 5 1/4" (133mm) Cutout Diameter: 11" (279mm)	Fs (Hz): 35Hz Re: 3.25 Ohms Le: 3.0mH Qms: 5.5 Qes: 0.63	Qts: 0.53 Vas: 1.3ft ³ (38L) Sd: 80.6in ² (520cm ²)
MM1240DVC	Dual 4 Ω Voice Coil 12" Subwoofer	Power Handling: 850W Peak Power Handling: 425W RMS Frequency Response: 22Hz - 200Hz Sensitivity: 92dB Impedance: 8 Ohms (Series); 2 Ohms (Parallel)	Oneway/Excursion (Linear): 1" (25mm) Voicecoil Diameter: 2" (50mm) Mounting Depth (top mount): 4 5/8" (117.5mm) Mounting Depth (bottom mount): 5 1/4" (133mm) Cutout Diameter: 11" (279mm)	Fs (Hz): 35Hz Re: 6.25 Ohms Le: 5.1mH Qms: 5.0 Qes: 0.70	Qts: 0.6 Vas: 1.3ft ³ (38L) Sd: 80.6in ² (520cm ²)
MM1540	15" Subwoofer	Power Handling: 850W Peak Power Handling: 425W RMS Frequency Response: 18Hz - 150Hz Sensitivity: 93dB Impedance: 4 Ohms	Oneway/Excursion (Linear): 3/4" (20mm) Voicecoil Diameter: 2" (50mm) Mounting Depth (top mount): 4 5/8" (117.5mm) Mounting Depth (bottom mount): 5 1/4" (133mm) Cutout Diameter: 13 7/8" (352mm)	Fs (Hz): 27Hz Re: 3.25 Ohms Le: 3.0mH Qms: 5.0 Qes: 0.56	Qts: 0.5 Vas: 3.5.ft ³ (100L) Sd: 128.5in ² (829cm ²)
MM1540DVC	Dual 4 Ω Voice Coil 15" Subwoofer	Power Handling: 850W Peak Power Handling: 425W RMS Frequency Response: 18Hz - 150Hz Sensitivity: 93dB Impedance: 8 Ohms (Series); 2 Ohms (Parallel)	Oneway/Excursion (Linear): 3/4" (20mm) Voicecoil Diameter: 2" (50mm) Mounting Depth (top mount): 4 5/8" (117.5mm) Mounting Depth (bottom mount): 5 1/4" (133mm) Cutout Diameter: 13 7/8" (352mm)	Fs (Hz): 27Hz Re: 6.25 Ohms Le: 5.1mH Qms: 5.0 Qes: 0.56	Qts: 0.5 Vas: 3.5.ft ³ (100L) Sd: 128.5in ² (829cm ²)

Ultra Performance. Ultra Reliability. Ultra Marine.

Although any of the MM Series may be used in a marine environment, we've made five premium models specifically for use on boats and other watercraft. With a 6 1/2" coaxial, a 6 1/2" component, two 8" subwoofers and a 10" subwoofer available, you can put together a complete on-the-water system. We've thoroughly tested them in the lab and out on the open sea to make sure they'll sound great while surviving life on water. In fact, they're so good, top watercraft manufacturers like Correct Craft and Sea Ray install Polk Ultra Marine Series from their factories.

Rugged, built-on grilles provide protection and integrates the tweeter mount—eliminating the need for a traditional tweeter post. The front of the speaker is then completely sealed preventing water intrusion.

Sealed crossover assembly is built into the back of the speaker means there's no need to find room to hide an extra box making installation easier.

Stainless steel heavy duty input terminals will not corrode or tarnish from humidity or salt water. They'll accept heavy gauge cable for maximum signal transfer.

Passes the most rigorous 600 hours of salt fog and UV testing—ATSM B117-03 standard practice for operating salt spray (fog) apparatus, and D4329-99 standard practice for fluorescent UV exposure of plastics—a stringent standardized test of reliability and longevity. In other words, they're built like a tank.

Marine Certified means specific MM models are suitable for use on watercraft and land vehicles. These models come with the Ultra Marine (UM) model designator. MM Ultra Marine speakers were subjected to a series of grueling real world and accelerated weathering lab tests to see if they could stand up to harsh marine and automotive environments. We exposed them to hundreds of hours of salt fog, intense ultraviolet light and extreme temperatures from -40° to 185° F (-40° to 85° C), then gave them a listen. All MM Ultra Marine speakers and subwoofers passed the torture tests with flying colors.

**MARINE
CERTIFIED**



MM651UM



MM651UM



MM6501UM



MM840UM & MM840UM-DVC



MM1040UM

Ultra Marine

MM651UM	Ultra Marine 6 1/2" Coaxial	Power Handling: 200W Peak Power Handling: 100W RMS Frequency Response: 40Hz - 25kHz Sensitivity: 92dB Impedance: 4 Ohms	Driver Complement: 6 1/2" (162.5mm) mid/woofer Tweeter Complement: 1" (25mm) soft dome tweeter Cutout Dimensions: 5 1/16" (128.6mm) Mounting Depth (top): 2 5/8" (67mm) Mounting Depth (bottom): 2 7/8" (73mm)		
MM6501UM	Ultra Marine 6 1/2" Component System	Power Handling: 250W Peak Power Handling: 125W RMS Frequency Response: 40Hz - 25kHz Sensitivity: 92dB Impedance: 4 Ohms	Driver Complement: 6 1/2" (162.5mm) mid/woofer Tweeter Complement: 1" (25mm) soft dome tweeter Cutout Dimensions: 5 1/16" (128.6mm) Mounting Depth (top): 2 5/8" (67mm) Mounting Depth (bottom): 2 7/8" (73mm)		
MM840UM	Ultra Marine 8" Subwoofer	Power Handling: 500W Peak Power Handling: 250W RMS Frequency Response: 26Hz - 200Hz Sensitivity: 90dB Impedance: 4 Ohms	Oneway/Excursion (Linear): 3/4" (20mm) Voicecoil Diameter: 1 1/2" (38.1mm) Mounting Depth (top mount): 4 5/8" (117.5mm) Mounting Depth (bottom mount): 4 11/16" (119mm) Cutout Diameter: 7 1/8" (181mm)	Fs (Hz): 35Hz Re: 3.25 Ohms Le: 2.3mH Qms: 5.5 Qes: 0.7	Qts: 0.6 Vas: 0.54ft ³ (15.4L) Sd: 35.65in ² (230cm ²)
MM840UM-DVC	Ultra Marine Dual 4 Ω Voice Coil 8" Subwoofer	Power Handling: 500W Peak Power Handling: 250W RMS Frequency Response: 26Hz - 200Hz Sensitivity: 90dB Impedance: 8 Ohms (Series); 2 Ohms (Parallel)	Oneway/Excursion (Linear): 3/4" (20mm) Voicecoil Diameter: 1 1/2" (38.1mm) Mounting Depth (top mount): 4 5/8" (117.5mm) Mounting Depth (bottom mount): 4 11/16" (119mm) Cutout Diameter: 7 1/8" (181mm)	Fs (Hz): 35Hz Re: 6.25 Ohms Le: 2.47mH Qms: 5.5 Qes: 0.62	Qts: 0.59 Vas: 0.55ft ³ (15.8L) Sd: 35.65in ² (230cm ²)
MM1040UM	Ultra Marine 10" Subwoofer	Power Handling: 700W Peak Power Handling: 350W RMS Frequency Response: 24Hz - 200Hz Sensitivity: 91dB Impedance: 4 Ohms	Oneway/Excursion (Linear): 1" (25mm) Voicecoil Diameter: 2" (50mm) Mounting Depth (top mount): 4 5/8" (117.5mm) Mounting Depth (bottom mount): 5 3/16" (132mm) Cutout Diameter: 9 1/8" (231.8mm)	Fs (Hz): 40Hz Re: 3.25 Ohms Le: 3.0mH Qms: 3.0 Qes: 0.53	Qts: 0.45 Vas: 0.65ft ³ (18L) Sd: 54.25in ² (350cm ²)

