

EMC Compliance — Transducer cable suppression ferrite



Warning: Product installation and operation

This product must be installed and operated in accordance with the instructions provided. Failure to do so could result in personal injury, damage to your vessel and/or poor product performance.

Technical accuracy

To the best of our knowledge, the information in this document was correct at the time it was produced. However, Raymarine cannot accept liability for any inaccuracies or omissions it may contain. In addition, our policy of continuous product improvement may change specifications without notice. As a result, Raymarine cannot accept liability for any differences between the product and this document. Please check the Raymarine website to ensure you have the most up-to-date version(s) of the documentation for your product.

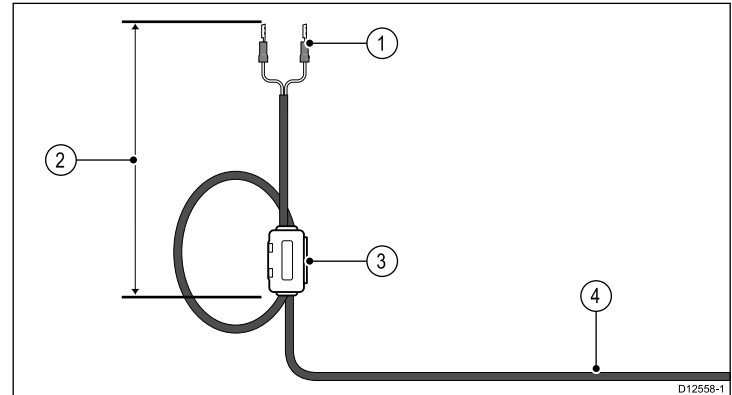
EMC conformance

Raymarine equipment and accessories conform to the appropriate Electromagnetic Compatibility (EMC) regulations for use in the recreational marine environment.

Correct installation is required to ensure that EMC performance is not compromised.

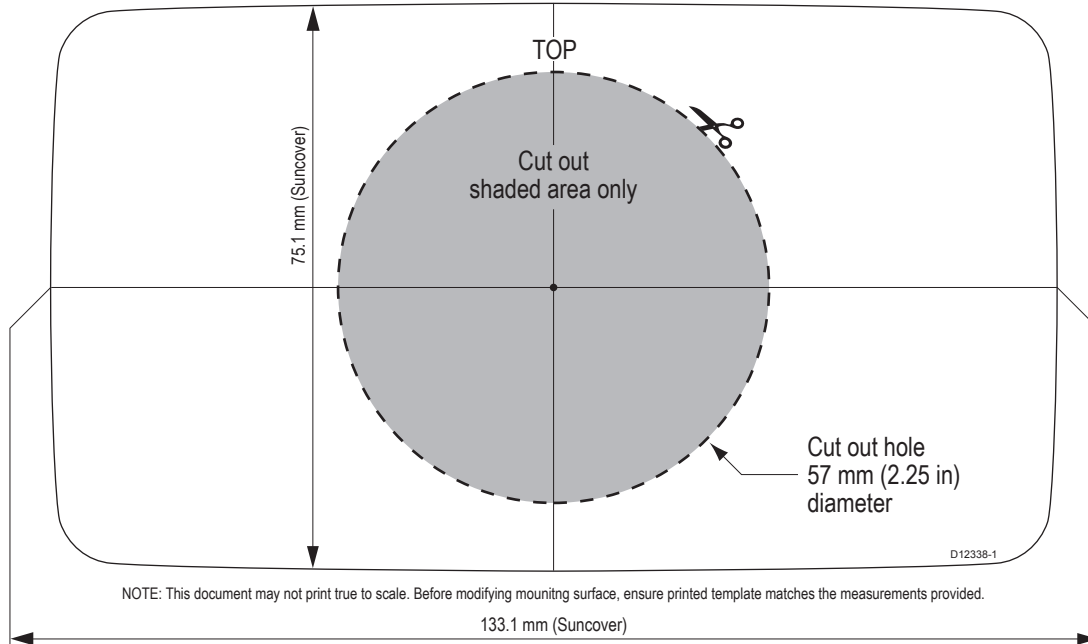
Transducer cable suppression ferrite

Fit the supplied ferrite to the transducer cable so that the transducer cable loops through the ferrite clamp once and is no more than 75 mm (3") from the transducer cable's spade terminals (as shown below).

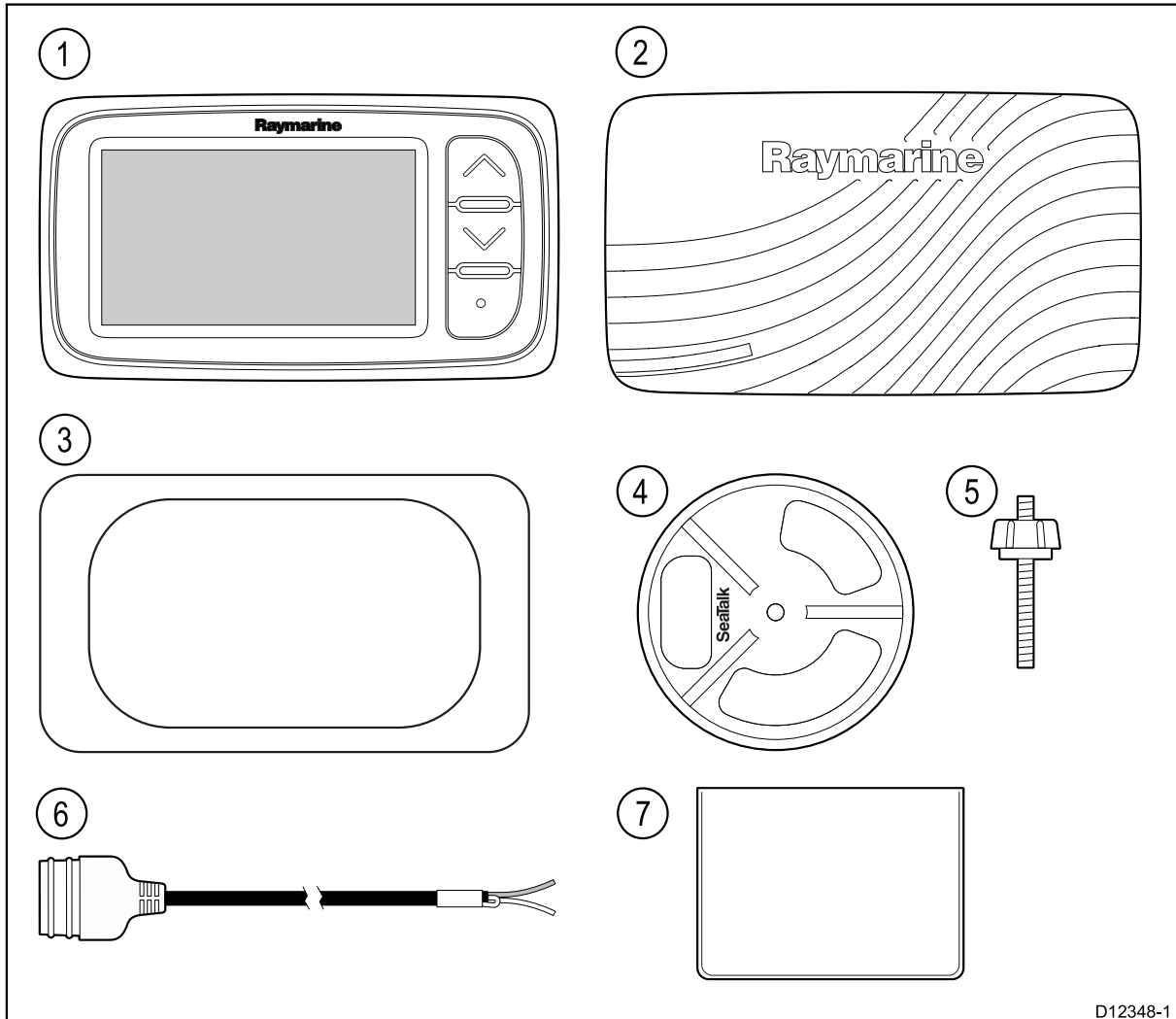


Item	Description
1	Transducer cable spade terminals (Connection to product)
2	75 mm (3") maximum distance
3	Suppression ferrite (supplied)
4	Cable to wind transducer

i40 Instrument Mounting Template



Parts supplied



1	i40 Instrument
2	i40 Sun cover
3	Mounting gasket
4	Clamping bracket
5	Fixing stud and thumb nut
6	SeaTalk power cable
7	Document pack