

AXIOM™

A Powerful New Multifunction Navigation System from Raymarine



Raymarine

SIMPLY SUPERIOR™

AXIOM™

BLAZING FAST PERFORMANCE AND POWER AT YOUR FINGER TIPS



AXIOM™ – a powerful new multifunction navigation system from Raymarine. With available built-in RealVision 3D™ sonar, the all new LightHouse 3 operating system, and blazing fast quad core performance, AXIOM will transform your time on the water.

Choice of 3 display sizes

7,0"

9,0"

12,1"

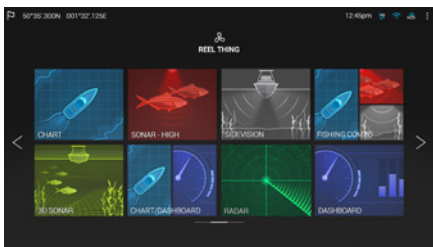


Axiom is expandable so its capabilities can grow as needed. It supports the full range of Raymarine accessories, including Quantum radar, CHIRP Sonar, FLIR thermal cameras, audio integration, instruments, cameras, and Evolution autopilot. Standard Wi-Fi and Bluetooth connectivity allows connection to the latest Raymarine apps for tablets and smartphones.

Axiom includes surface and trunnion mounting kits, mounting hardware, power/data cable, and installation instructions.



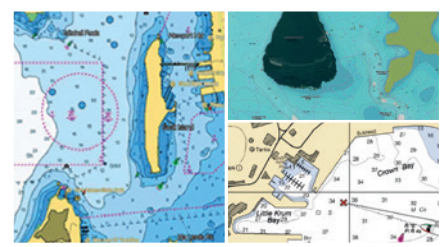
Fast 10 Hz 72 Channel GPS/GLONASS Receiver for rapid position updates and smooth on screen tracking.



New LightHouse 3 OS is fast, fluid, and easy to learn. An uncluttered interface that is easily personalized for your style of navigating.



Rugged All-Glass Display optimized for flush or surface mounting. Sleek buttonless design with swipe to power control.



Support for the best charts from Navionics and LightHouse Raster and Vector Charts sourced from leading map makers like NV Digital, Blue Latitude, and more.

AXIOM™

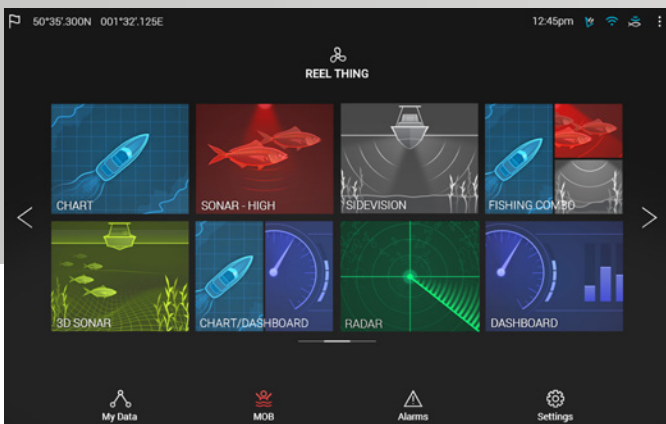


LIGHTHOUSE 3

INTUITIVE AND POWERFUL

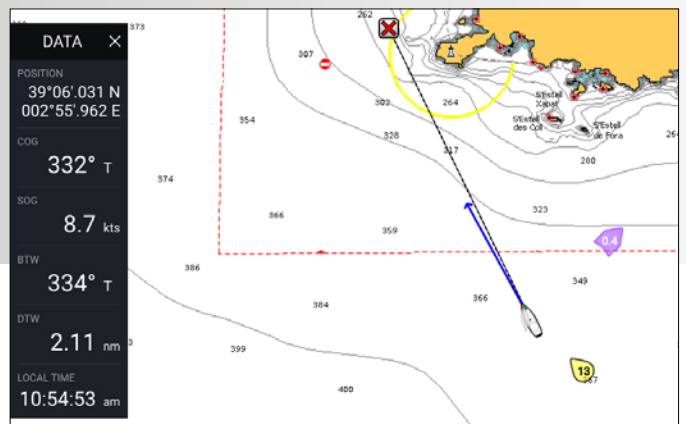


LightHouse 3 is fast, fluid, and easy to learn. The uncluttered interface is easily personalized for your style of navigating.



Home screen

The LightHouse 3 home screen offers bold and simple app icons. Customize the home screen with your favourite apps.



Your Data – Just a Swipe Away

Simply swipe the side of the display to reveal the Side Bar data display. The Side Bar also appears automatically if a GOTO command is initiated.

Beautiful Data

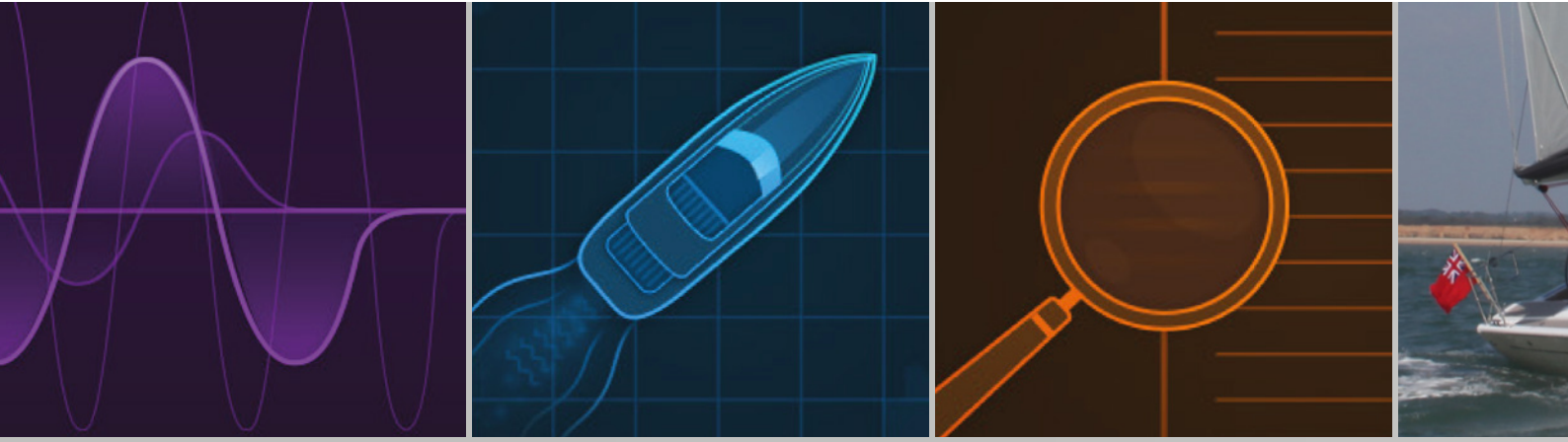
Drag and drop your databoxes anywhere on your screen. Choose from 4 different size options and up to 14 different data types.



User Profiles

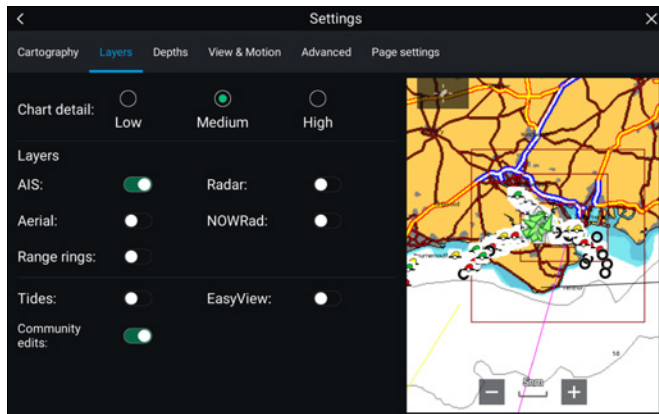
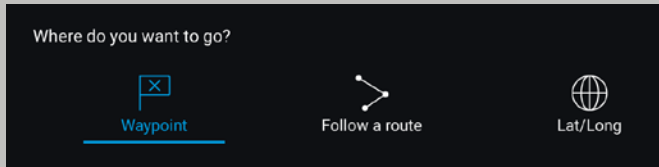
LightHouse 3 User Profiles saves your personal home screen and configuration preferences.

AXIOM™



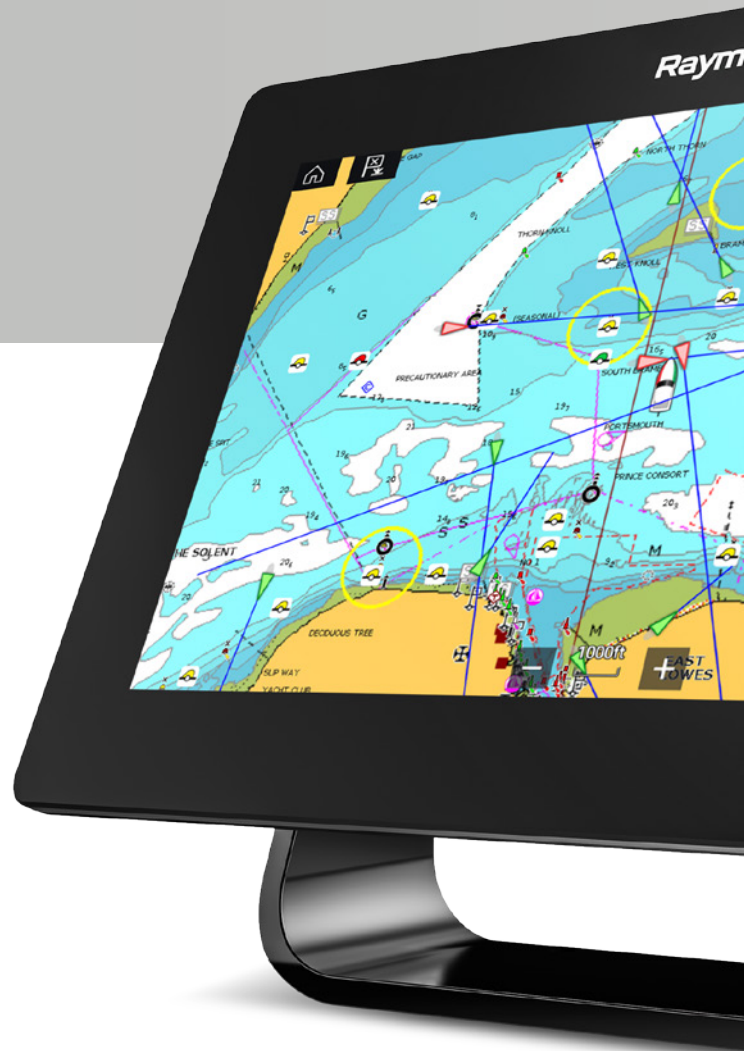
Take Command

LightHouse 3's easy-to-use interface will put you in complete command with just a few touches.



LightHouse LiveView Menu™ Controls

Easily customize the chart and see the navigation display change in real time.



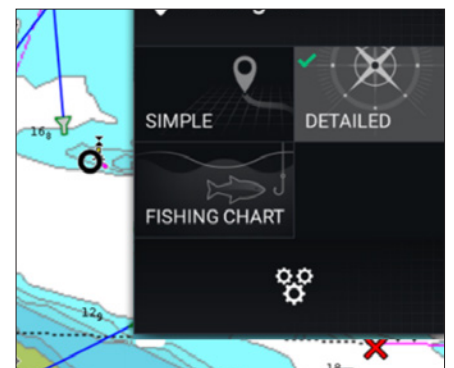
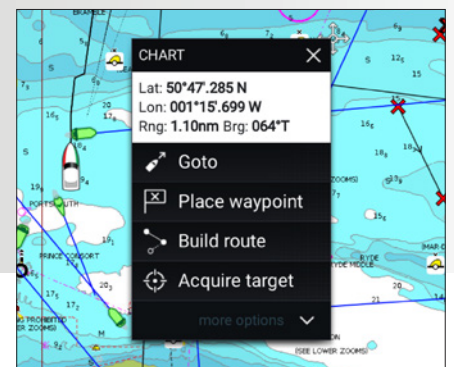
LIGHTHOUSE 3

INTUITIVE AND POWERFUL



Smart Context Menus

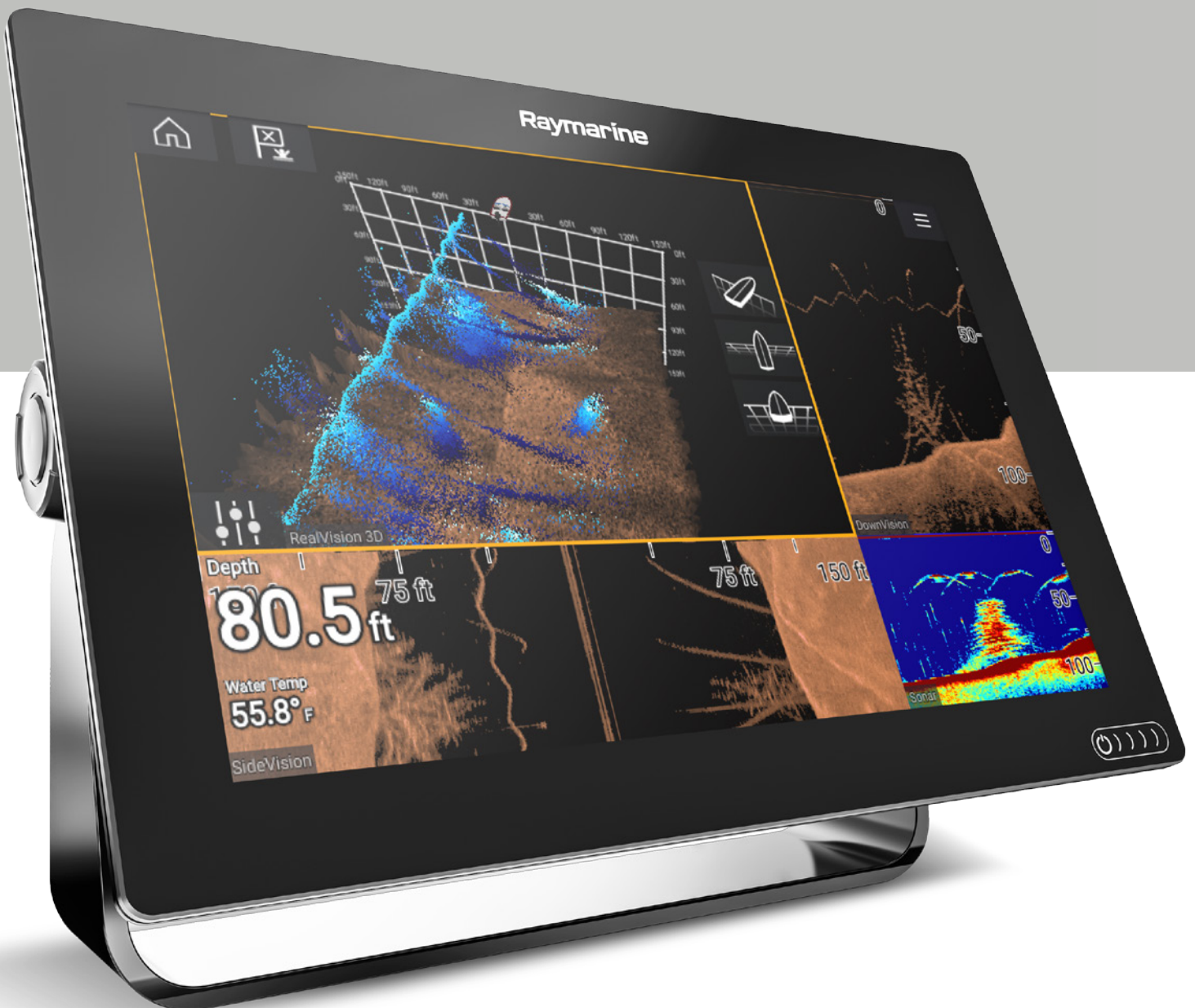
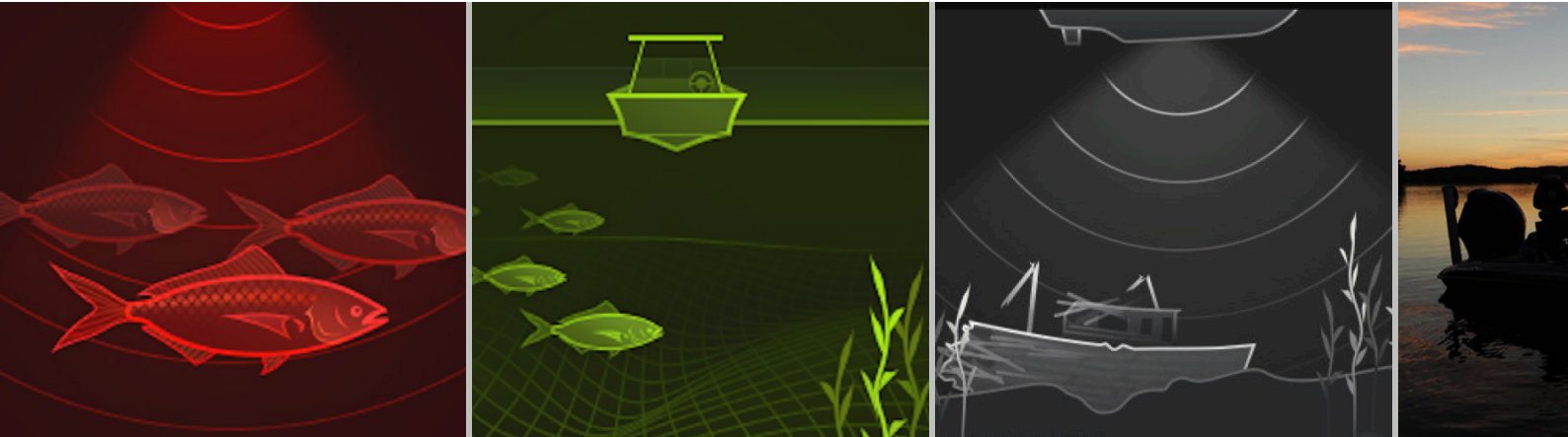
Tap the chart to position the cursor or Press chart to open the menu.



New Chart Modes

Uncluttered menus with quick access to Simple, Detailed, and Fishing chart modes.

AXIOM™



NEW REALVISION™ 3D SONAR

SIMPLY SUPERIOR SONAR

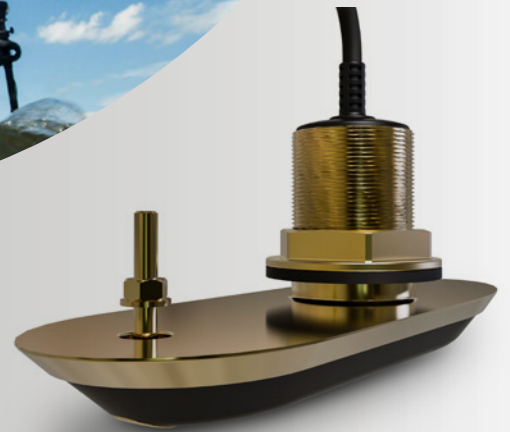


Gyro Stabilised Sonar Technology

Gyro stabilisation compensates for boat movement, delivering life-like 3D sonar imagery

All-in-One Transducer

RealVision 3D Transducers combine CHIRP DownVision, CHIRP SideVision, High Frequency CHIRP, and RealVision 3D into a single transducer housing.



Easy Fish Identification

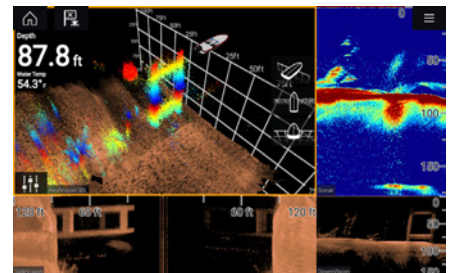
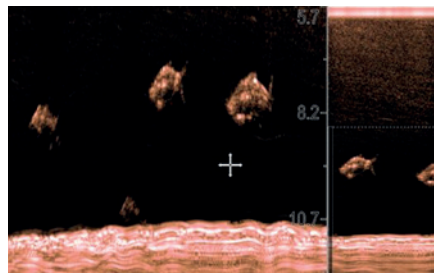
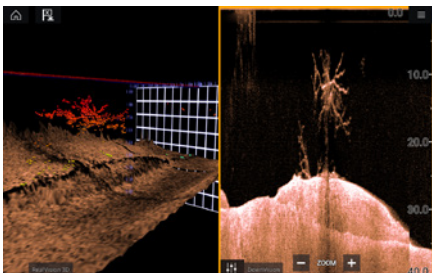
Easily identify structure and locate fish with the life-like clarity of RealVision™ 3D sonar.

Wide Spectrum CHIRP sonar

Transmits on 60 different frequencies for the most life-like sonar imagery and simply the best fish targeting—hands down!

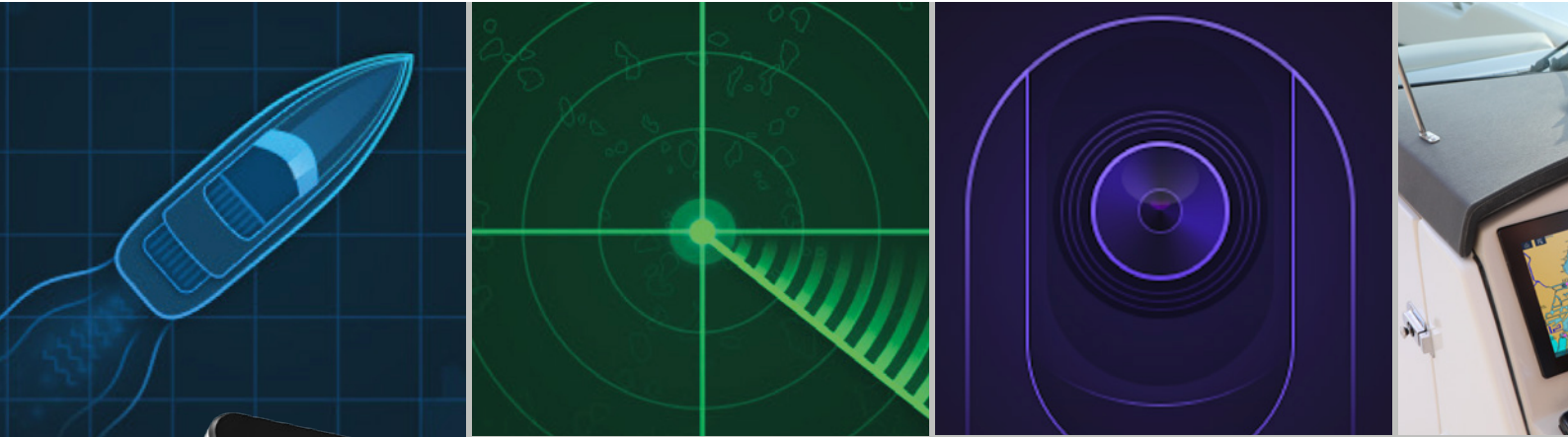
Powerful 4 Channel Sonar

Supports RealVision 3D, CHIRP DownVision, SideVision, High Frequency CHIRP with 600 Watt (50/200 kHz) sonar.



Images for illustrative purposes only

AXIOM™



ENHANCED AWARENESS

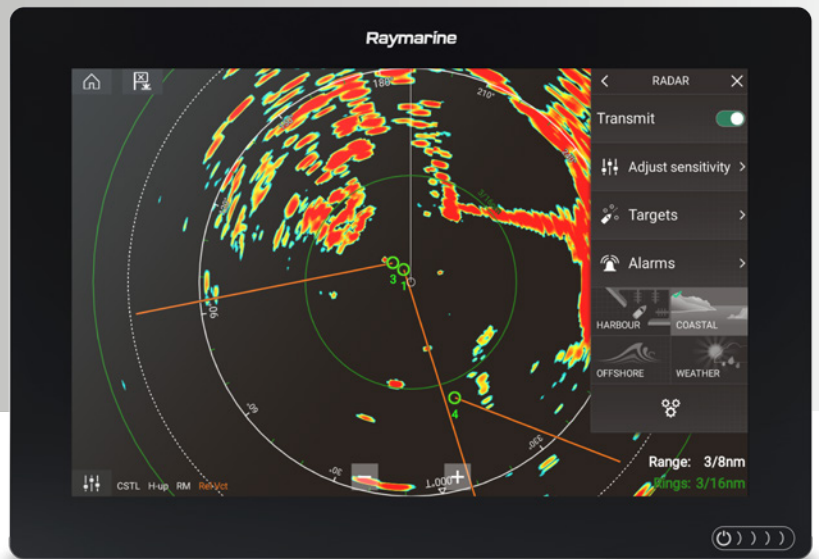
STAY SAFE WITH FLIR THERMAL AND RADAR



Uncluttered Radar

New radar modes simplify operation along with quick access to sensitivity controls and enhanced status and range displays.

LightHouse Live View Menu™ lets you see radar adjustments in real time.



Dedicated mode buttons



M100/M200 Thermal Cameras

Exclusive FLIR Clear Cruise™ thermal video analytics technology actively monitors the scene and provides alerts when any non-water objects enter the camera's field of view.

FLIR M100/200 Series

AXIOM™



Navigate Safely at Night when connected to the FLIR M100 and M200 compact marine thermal cameras.



High-Powered Black Box Sonar
Axiom is compatible with CP470 and CP570 CHIRP sonar modules.



Video Monitoring – Make Axiom your video observation center. Add docking cameras or keep watch on the crew. View 4 video over IP cameras simultaneously.

Connect Axiom with NMEA2000 and SeaTalk^{ng} compatible devices.



GENERAL FEATURES

A FEATURE-PACKED MULTIFUNCTION DISPLAY



Radar

Compatible with Quantum CHIRP Radar and Raymarine's family of Digital, HD, and Super HD radars.



USB Port for external drives, remote card readers and Smartphone charging.

Ready to Network with Raynet Ethernet and NMEA2000. Connect multiple Axiom displays or expand with Quantum, HD radar, IP cameras, engine gauges, autopilots, instruments, and more.

microSD Card Reader for charts (up to 128GB)

Marine Audio Control – Turn up the volume and control NMEA2000 compatible marine audio systems like Rockford Fosgate.



AXIOM PRICE LIST

The information contained in this price list, to the best of our knowledge, was correct as it went to press. However, the Raymarine policy of continuous improvement and updating may change product information and pricing without prior notice. Therefore, differences in products and prices may occur from time to time, for which liability cannot be accepted by Raymarine.

PART NO.	DESCRIPTION
AXIOM 7 CHARTPLOTTER	
E70363	AXIOM 7, Multi-function 7" Display
E70363-00-NSD	AXIOM 7, Multi-function 7" Display with Navionics+ Small Download Chart
AXIOM 7 DOWNVISION	
E70364	AXIOM 7 DV, Multi-function 7" Display with integrated 600W Sonar and DownVision
E70364-00-NSD	AXIOM 7 DV, Multi-function 7" Display with integrated DownVision, 600W Sonar and Navionics+ Small Download Chart
E70364-01	AXIOM 7 DV, Multi-function 7" Display with integrated DownVision, 600W Sonar including CPT-S transducer
E70364-01-NSD	AXIOM 7 DV, Multi-function 7" Display with integrated DownVision, 600W Sonar including CPT-S transducer and Navionics+ Small Download Chart
E70364-02	AXIOM 7 DV, Multi-function 7" Display with integrated DownVision, 600W Sonar including CPT-100DVS transducer
E70364-02-NSD	AXIOM 7 DV, Multi-function 7" Display with integrated DownVision, 600W Sonar including CPT-100DVS transducer and Navionics+ Small DownloadChart
AXIOM 7 REALVISION 3D	
E70365	AXIOM 7 RV, Multi-function 7" Display with integrated RealVision 3D, 600W Sonar, no transducer
E70365-00-NSD	AXIOM 7 RV, Multi-function 7" Display with integrated RealVision 3D, 600W Sonar with Navionics+ Small Download Chart
E70365-03	AXIOM 7 RV, Multi-function 7" Display with integrated RealVision 3D, 600W Sonar with RV-100 transducer
E70365-03-NSD	AXIOM 7 RV, Multi-function 7" Display with integrated RealVision 3D,600W Sonar with RV-100 transducer and Navionics+ Small Download Chart
AXIOM FRONT MOUNT ACCESSORIES	
A80498	Front Mounting Kit for AXIOM 7
A80499	Suncover for AXIOM 7 when using Front Mounting Kit
AXIOM REAR MOUNT ACCESSORIES	
R70528	AXIOM 7 Metal brackets for Rear Mounting x 2
R70527	Suncover for AXIOM 7 when Rear Mounted (Surface)
AXIOM 9 CHARTPLOTTER	
E70366	AXIOM 9, Multi-function 9" Display
E70366-00-NSD	AXIOM 9, Multi-function 9" Display with Navionics+ Small Download Chart
AXIOM 9 REALVISION 3D	
E70367	AXIOM 9 RV, Multi-function 9" Display with integrated RealVision 3D, 600W Sonar, no transducer
E70367-00-NSD	AXIOM 9 RV, Multi-function 9" Display with integrated RealVision 3D,600W Sonar, no transducer but with Navionics+ Small Download Chart
E70367-02	AXIOM 9 RV, Multi-function 9" Display with integrated RealVision 3D, 600W Sonar with CPT-100DVS transducer
E70367-02-NSD	AXIOM 9 RV, Multi-function 9" Display with integrated RealVision 3D,600W Sonar including CPT-100DVS transducer and Navionics+ Small DownloadChart
E70367-03	AXIOM 9 RV, Multi-function 9" Display with integrated RealVision 3D, 600W Sonar with RV-100 transducer
E70367-03-NSD	AXIOM 9 RV, Multi-function 9" Display with integrated RealVision 3D,600W Sonar with RV-100 transducer and Navionics+ Small Download Chart
AXIOM FRONT MOUNT ACCESSORIES	
A80500	Front Mounting Kit for AXIOM 9
A80501	Suncover for AXIOM 9 when using Front Mounting Kit
AXIOM REAR MOUNT ACCESSORIES	
R70531	Rear Mounting Kit for AXIOM 9 (Incl. Rear Brackets, Bolts and Thumbnuts)
R70530	Suncover for AXIOM 9 when Trunnion or Surface Mounted
AXIOM 12 CHARTPLOTTER	
E70368	AXIOM 12, Multi-function 12" Display
E70368-00-NSD	AXIOM 12, Multi-function 12" Display with Navionics+ Small Download Chart
AXIOM 12 REALVISION 3D	
E70369	AXIOM 12 RV, Multi-function 12" Display with integrated RealVision 3D, 600W Sonar, no transducer
E70369-00-NSD	AXIOM 12 RV, Multi-function 12" Display with integrated RealVision 3D,600W Sonar, no transducer but with Navionics+ Small Download Chart
E70369-03	AXIOM 12 RV, Multi-function 12" Display with integrated RealVision 3D, 600W Sonar with RV-100 transducer
E70369-03-NSD	AXIOM 12 RV, Multi-function 12" Display with integrated RealVision 3D,600W Sonar with RV-100 transducer and Navionics+ Small Download Chart
AXIOM FRONT MOUNT ACCESSORIES	
A80502	Front Mounting Kit for AXIOM 12
A80503	Suncover for AXIOM 12 when using Front Mounting Kit
AXIOM REAR MOUNT ACCESSORIES	
R70534	Rear Mounting Kit for AXIOM 12 (Incl. Rear Brackets, Bolts and Thumbnuts)
R70533	Suncover for AXIOM 12 when Trunnion or Surface Mounted

AXIOM TRANSOM TRANSDUCERS	
E70342	CPT-S Plastic Conical HIGH CHIRP Transom Mount Transducer
A80507	CPT-90DVS Transom Mount Chirp Transducer, Depth & Temp, Direct connect to AXIOM MFDs (10m cable)
A80464	RV-100 RealVision 3D Transom Mount Transducer, Direct connect to AXIOM MFDs (8m cable)
AXIOM PLASTIC THROUGH HULL TRANSDUCERS	
A80470	RV-300 RealVision 3D Plastic Through Hull Transducer 0°, Direct connect to AXIOM (8m cable)
T70320	Pack of RV-312 RealVision 3D Plastic Thru Hull Txds, Port & Starboard 12°, Direct connect to AXIOM (2 x 2m, Y-cable and 8m extension cable)
A80471	RV-312P RealVision 3D Plastic Through Hull Transducer Port 12°, Direct connect to AXIOM (2m cable)
A80472	RV-312S RealVision 3D Plastic Through Hull Transducer Starboard 12°, Direct connect to AXIOM (2m cable)
T70321	Pack of RV-320 RealVision 3D Plastic Thru Hull Txds, Port & Starboard 20°, Direct connect to AXIOM (2 x 2m, Y-cable and 8m extension cable)
A80473	RV-320P RealVision 3D Plastic Through Hull Transducer Port 20°, Direct connect to AXIOM (2m cable)
A80474	RV-320S RealVision 3D Plastic Through Hull Transducer Starboard 20°, Direct connect to AXIOM (2m cable)
AXIOM BRONZE THROUGH HULL TRANSDUCERS	
A80465	RV-200 RealVision 3D Bronze Through Hull Transducer 0°, Direct connect to AXIOM (8m cable)
T70318	Pack of RV-212 RealVision 3D Bronze Thru Hull Txds, Port & Starboard 12°, Direct connect to AXIOM (2 x 2m, Y-cable and 8m extension cable)
A80466	RV-212P RealVision 3D Bronze Through Hull Transducer Port 12°, Direct connect to AXIOM (2m cable)
A80467	RV-212S RealVision 3D Bronze Through Hull Transducer Starboard 12°, Direct connect to AXIOM (2m cable)
T70319	Pack of RV-220 RealVision 3D Bronze Thru Hull Txds, Port & Starboard 20°, Direct connect to AXIOM (2 x 2m, Y-cable and 8m extension cable)
A80468	RV-220P RealVision 3D Bronze Through Hull Transducer Port 20°, Direct connect to AXIOM (2m cable)
A80469	RV-220S RealVision 3D Bronze Through Hull Transducer Starboard 20°, Direct connect to AXIOM (2m cable)
AXIOM ACCESSORIES	
T70293	System Remote Control Keypad (RMK-10) Portrait & Landscape
A80440	RCR - Remote SD Card Reader and USB Socket
R70561	AXIOM Power Cable 1.5m Right Angled with NMEA 2000 Connector
R70523	AXIOM Power Cable 1.5m Straight with NMEA 2000 Connector
A80475	3m RealVision 3D Transducer Extension Cable
A80476	5m RealVision 3D Transducer Extension Cable
A80477	8m RealVision 3D Transducer Extension Cable
A80478	0.3m Y-Cable for RealVision 3D Transducers
R70521	RV-100 Transom Mounting Bracket
A80479	Step Mount for RV-100 RealVision 3D transom Mount Transducer
A80480	Jack Plate Mount for RV-100 RealVision 3D transom Mount Transducer
A80482	Spacer Kit for Jack Plate Mount for RV-100 RealVision 3D transom Mount Transducer
A80483	Trolling Motor Mount for RV-100 RealVision 3D transom Mount Transducer
AXIOM ADAPTOR CABLES	
A80484	Adaptor Cable (9 pin to 7 pin) to attach an existing 7 pin Airmar (direct connect to ax7/eSx7 MFD) transducer to AXIOM 7 DV
A80485	Adaptor Cable (9 pin to 8 pin) to attach an existing 8 pin Airmar (CP370 style connector) transducer to AXIOM 7 DV
A80486	Y-Cable (9 pin to 9 & 7 pin) to attach a DownVision (CPT-1xx) Transducer & an Airmar (direct connect to ax7/eSx7 MFD) transducer to AXIOM 7DV
A80487	Y-Cable (9 pin to 9 & 8 pin) to attach a DownVision (CPT-1xx) Transducer & an Airmar (CP370 Style connector) transducer to AXIOM 7DV
A80488	Adaptor Cable (25 pin to 7 pin) to attach an existing 7 pin Airmar (direct connect to ax7/eSx7 MFD) transducer to AXIOM RV
A80489	Adaptor Cable (25 pin to 8 pin) to attach an existing 8 pin Airmar (CP370 style connector) transducer to AXIOM RV
A80490	Adaptor Cable (25 pin to 9 pin) attach DownVision (CPT-1xx) transducer to AXIOM RV
A80491	Y-Cable (25 pin to 25 & 7 pin) to attach a RealVision 3D (RV-xxx) Transducer & an Airmar (direct connect to ax7/eSx7 MFD) transducerto AXIOM RV
A80492	Y-Cable (25 pin to 25 & 8 pin) to attach a RealVision 3D (RV-xxx) Transducer & an Airmar (CP370 style connector) transducer to AXIOM RV
A80493	Y-Cable (25 pin to 9 & 7 pin) to attach a DownVision (CPT-1xx) Transducer & an Airmar (direct connect to ax7/eSx7 MFD) transducerto AXIOM RV
A80494	Y-Cable (25 pin to 9 & 8 pin) to attach a DownVision (CPT-1xx) Transducer & an Airmar (CP370 style connector) transducer to AXIOM RV
A80490	Adaptor Cable (25 pin to 9 pin) attach DownVision (CPT-1xx) transducer to AXIOM RV

AXIOM Specifications

	AXIOM 7	AXIOM 9	AXIOM 12
Screen Size	7.0" Optically Bonded LCD	9.0" Optically Bonded LCD	12.1" Optically Bonded LCD
Display Resolution	800 x 480 WVGA	800 x 480 WVGA	1280 x 800 WXGA
Screen Type	Touchscreen		
Mounting Options	Top / Flush / Bracket / Rear Mounting		
Networking	1 x 10/100 Mbps/ Network (RayNet)		
Waterproofing	IPX6 / IPX7	IPX6 / IPX7	IPX6 / IPX7
Memory Card Slot	1x MicroSD		
Wi-Fi	WiFi - 802.11 b / g		
Bluetooth	Bluetooth 2.1+ EDR power class 1.5 (supports AVRCP 1.0)		
Radar Compatible	Yes		
Thermal Night Vision Compatible	Yes – compatible with FLIR M100 and M200 cameras		
Video over IP Camera Support	Add up to 10 Video over IP network cameras		
Built-in Sonar	Model dependent		
External Sonar Compatible	Yes – support for Digital and CHIRP sonar modules		
GPS	Built-in GNSS Receiver: GPS/GLONASS/Beidou* - 10Hz 72 Channel		
Optional Remote Controls	RMK-10		
AIS	With optional receivers and transceivers		
Audio Integration	Support for NMEA2000 compatible audio devices		
Voltage	12V DC (8 V to 16 VDC)		
Operating Temperature	-13° F to +131° F (-25° C to +55° C)		
NMEA2000	NMEA2000 via DeviceNet port. SeaTalk [®] compatible using an optional adapter		

	DIMENSIONS					
	AXIOM 7		AXIOM 9		AXIOM 12	
	mm	in	mm	in	mm	in
A	250.4	9.86	265.03	10.43	314	12.36
B	133	5.24	157.78	6.21	217	8.54
C	162.5	6.4	187.8	7.39	226.8	8.93
D	76.4	3.0	74.9	2.96	79.3	3.12
E	218	8.59	177	6.97	183	7.2

Safety Notices

Raymarine products are intended to be used as aids to navigation and must never be used in preference to sound navigational judgement. Their accuracy can be affected by many factors, including environmental conditions, equipment failure or defects, and incorrect installation, handling or use.

Only official government charts and notices to mariners contain all the current information needed for safe navigation, and the captain is responsible for their prudent use. It is the user's responsibility to use official government charts, notices to mariners, caution and proper navigational skill when operating any Raymarine product.

Content Note

The technical and graphical information contained in this brochure, to the best of our knowledge, was correct as it went to press. However, the Raymarine policy of continuous improvement and updating may change product specifications without prior notice. Therefore, unavoidable differences between the product and this brochure may occur from time to time, for which liability cannot be accepted by Raymarine.

Some images in this brochure have been used for illustration purposes only.

Raymarine[®]

a brand by FLIR[®]

Accept no compromises, choose only quality marine electronics and navigation.