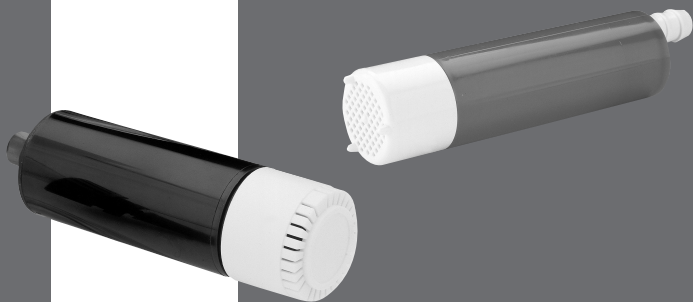
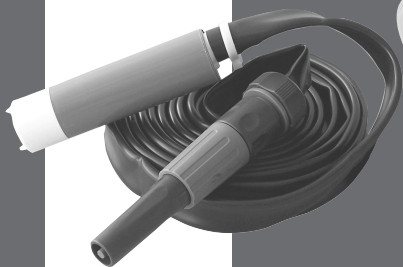


rule®



Portable Pumping Kits

Features

- Pumps fresh and sea water.
- Wash down for cars, RVs, anchors and boats.
- Deck shower.
- Bilge or storm water emptying.
- Diesel refuelling and transfer (models iL500PK and iL280PK only).
- Garden watering.
- Container filling and emptying.

Instructions

Immerse the complete pump in liquid. Connect the battery clips to the battery terminals (+) positive to (+) positive and (-) negative to (-) negative (if powering from a car or boat battery do not use with engine running). The pump will deliver immediately. Adjust spray nozzle to obtain required flow.

For an in-line installation unclip the filter to expose the inlet nozzle. Connect a length of hose between the tank and nozzle. The pump must be fitted below the tank.

- Avoid dry running for long periods.
- For drinking water applications sterilize regularly.
- Store away from excessive heat and direct sunlight to avoid external damage.
- If the pump fails to perform, check for blockages (including filter), leaks and correct hose & electrical connections.

Specifications

Model	iL500 ^{Plus} Kit	iL280 ^{Plus} Kit	iL200 Kit
Part No.:	iL500PK iL500PK-24	iL280PK iL280PK-24	iL200K
Pump Type:	Centrifugal submersible / in-line portable pumping kit		
Current:	12V (6amp) 24V (3amp)	12V (4.5amp) 24V (2.5amp)	12V (2.8amp)
Head:	32ft (9.7m)	32ft (9.7m)	25ft (7.6m)
Flow rate:	500 gph (1920 lph)	280 gph (1080 lph)	200 gph (760 lph)
Rating:	Continuous*	Continuous*	Intermittent ^
Outlets (id hose):	3/4 (19mm)	1/2 (13mm)	3/8 (10mm) & 1/2 (13mm)
Hose:	13ft (4m) lay flat pvc / nitrile hose	13ft (4m) lay flat pvc / nitrile hose	9ft (3m) lay flat food quality hose
Pressure:	14psi (0.96bar)	14psi (0.96bar)	14psi (0.96bar)
Pump Body:	POM	POM	HIP
Pump Length:	6.5" (165mm)	6.5" (165mm)	5.1" (130mm)
Pump Diameter:	1.5" (38mm)	1.5" (38mm)	1.4" (36mm)
Cable Length:	13ft (4m)	13ft (4m)	3ft (1m)
Weight:	2.2lbs (1kg)	1.8lbs (800g)	1.4lbs (650g)
Liquid:	Fresh & Sea Water / Diesel		Fresh & Sea Water
Operating Temp:	Diesel to 104°F (40°C) Water to 176°F (80°C)		Water to 140°F (60°C)

WARNING

DO NOT use any Rule pump for petrol, petroleum products or any products with a flash point below 37°C (98°F).

* Continuous Duty - Should not be run dry for long periods of time.

^ Intermittent Duty - Should not be run for more than 20mins and rested for equal time.

Rule Submersible and Inline Pump

Features

- Pumps fresh and sea water.
- Rapid diesel refuelling and transfer with no spillage (models iL500^{Plus}, iL280^{Plus} and iL200^{Plus} only).
- Bilge pump-out in tight areas.
- Water Transfer; Deck Showers; Deck, Anchor & General Wash-down.
- Robust, slim line with clip-on easily cleaned filter.

Instructions

Fit a length of appropriate size hose (see specification table for details) to the outlet nozzle and immerse the complete pump in liquid. Connect the battery clips to the battery terminals (+) positive to (+) positive and (-) negative to (-) negative (if powering from a car or boat battery do not use with engine running). The pump will deliver immediately.

For an in-line installation unclip the filter to expose the inlet nozzle. Connect a length of hose between the tank and nozzle. The pump must be fitted below the tank.

- Avoid dry running for long periods.
- For drinking water applications sterilize regularly.
- Store away from excessive heat and direct sunlight to avoid external damage.
- If the pump fails to perform, check for blockages (including filter), leaks and correct hose & electrical connections.

Specifications

Model	iL500 ^{Plus}	iL280 ^{Plus}	iL200 ^{Plus}	iL200
Part No.:	iL500P iL500P-24	iL280P iL280P-24	iL200P iL200P-24	iL200
Pump Type:	Centrifugal submersible and in-line pump			
Current:	12V (6amp) 24V (3amp)	12V (4.5amp) 24V (2.5amp)	12V (4.5amp) 24V (2.5amp)	12V (2.8amp)
Head:	32ft (9.7m)	32ft (9.7m)	32ft (9.7m)	25ft (7.6m)
Flow rate:	500 gph (1920 lph)	280 gph (1080 lph)	200 gph (760 lph)	200 gph (760 lph)
Rating:	Continuous*	Continuous*	Continuous*	Intermittent ^
Outlets (id hose):	3/4 (19mm)	1/2 (13mm)	1/2 (13mm)	3/8 (10mm) & 1/2 (13mm)
Pressure:	14psi (0.96bar)	14psi (0.96bar)	11psi (0.76bar)	14psi (0.96bar)
Body:	POM	POM	POM	HIP
Length:	6.5" (165mm)	6.5" (165mm)	5.6" (165mm)	5.1" (130mm)
Diameter:	1.5" (38mm)	1.5" (38mm)	1.5" (38mm)	1.4" (36mm)
Cable Length:	13ft (4m)	13ft (4m)	3ft (1m)	3ft (1m)
Weight:	1.1lbs (500g)	1.1lbs (500g)	0.5lbs (227g)	0.25lbs (113g)
Liquid:	Fresh & Sea Water / Diesel			Fresh & Sea Water
Operating Temp:	Diesel to 104°F (40°C) Water to 176°F (80°C)			Water to 140°F (60°C)

* Continuous Duty - Should not be run dry for long periods of time.

^ Intermittent Duty - Should not be run for more than 20mins and rested for equal time.

Check out the collection of boat plumbing we offer.

WARNING

DO NOT use any Rule pump for petrol, petroleum products or any products with a flash point below 37°C (98°F).