



SCANSTRUT®








designed for life at sea

*Experts in Installation Solutions
for Marine Electronics*

30 Years: 1986 - 2016

Product Guide
2016

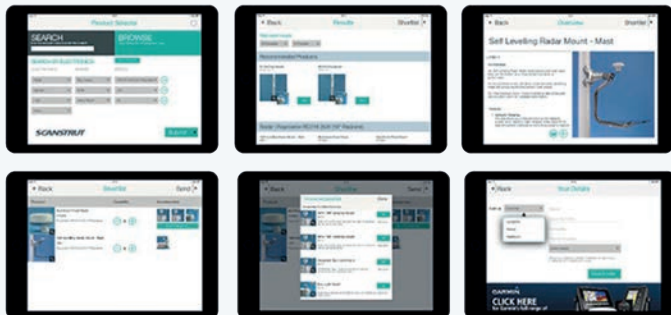
Contents

								
		Radar	Satcom	Displays & instruments	GPS/VHF antenna	Lights	Cameras	Cabling Solutions
Electrical Accessories	1							
Mast Mounts	3	•	•					
Self-Levelling Radar Mount	3	•						
SC100 Pole Mount	5	•	•					
SC2 Pole Mount	5	•	•					
Tapered Mast	6	•	•	•	•	•	•	
PowerTower	7	•	•					
Satcom Antenna Mount	9				•			
Passive Hinge Kit	9						•	
Camera Mounts	9		•					
GPS Mounts	9		•					
Scanpod	11			•				
ROKK MINI	13			•				
ROKK MIDI	15							
Lifedge Waterproof Cases and Cables	17							•
Product Guide	18							

Product Finder App

Just enter your marine electronics wish list and the app will recommend the best Scanstrut products for your installation.

Easy to Use & Intuitive!



Supporting the world's leading marine electronics manufacturers

KIVIH

B&G

GARMIN

HUMMINBIRD

FURUNO

Intellian

Raymarine

LOWRANCE

SIMRAD

KODEN
Koden Electronics Co., Ltd.

Electrical Accessories

Deck Seals

The only guaranteed and proven watertight installation for your antenna and navlight cables.

Intuitive Design

A low profile shape makes for a stronger, impact resistant seal; no sharp edges to hit your foot on.

Easy Install

Each deck seal supplied with blank and pre-drilled inner seals to suit your requirements.

No Need to Remove Connectors

Split seal eliminates need to remove cable connectors during installation.

Choice of Finish

All models are available in impact resistant, UV stable plastic or Marine Grade 316 Stainless Steel.

Micro and Horizontal Deck Seals

New mini Deck Seal models designed to fit cable diameters from 2mm – 6mm (0.08” – 0.24”).



Micro Deck Seal

Designed with the same great aesthetics and marine grade materials as the standard Deck Seal range, and with a 100% waterproof rating.

Part no. **DS6-P**



Horizontal Deck Seal

Waterproof Deck Seal with horizontal cable entry; designed to incorporate an innovative compact seal compression system.

Part no. **DS-H6**



Multi Deck Seal

Fit multiple cables up to 15mm (0.59”) diameter in one installation. Supplied with an undrilled seal and made from marine grade aluminium with a hard anodised finish to resist impact marks.

Part no. **DS-MULTI**



Waterproof Guarantee

– IPX6 & IPX7
Tested & Approved

Connector Size	3 (.12)	4 (.16)	5 (.20)	6 (.24)	7 (.28)	8 (.31)	9 (.35)	10 (.39)	11 (.43)	12 (.47)	13 (.51)	14 (.55)	15 (.59)
Up to 16mm (0.63")	x	x	x	x	x	x							
Up to 21mm (0.83")		x	x	x	x	x	x	x	x	x	x	x	
Up to 30mm (1.18")							x	x	x	x	x	x	
Up to 40mm (1.57")										x	x	x	x

DS16 DS21A DS21B DS30 DS40 Add 'P' for Plastic and 'S' for Stainless Steel e.g. DS16-P

Through Bulkhead Cable Seal

Eliminate time consuming, sub-standard routing of electrical cables through watertight bulkheads.

Fit Multiple Cables

- Fit up to 10 cables to any bulkhead from 10mm to 35mm diameter

Easy Install

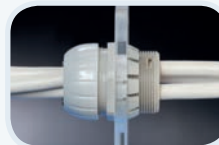
- Can be completed by just one person from one side of the bulkhead

Premium Materials

- Moulded in high strength nylon with an over-moulded internal seal

Part no. **TBH-4** (For 4 x 16mm (0.63”) cables

Part no. **TBH-10** (For 10 x 7mm (0.28”) cables



“The design is clever: it’s so easy and quick to fit by just one person and yet it clamps the cables securely for a repeatable, long term IP67 seal every time. Our engineers are very happy to work with the Scanstrut TBH”

Purchasing, Hanse Yachts

Junction Box

This ‘Fit & Forget’ range is the perfect sailing accessory for anyone planning boat maintenance; provides a secure, IP66 watertight connection for all marine electrical cables.

Choose Your Size

Choice of ‘standard’ box with 5 screw-down terminals or a ‘deluxe’ version which includes 10 fast-fit terminals for a quicker install.

Install Options

Fit directly to a chosen surface. A mounting bracket is included to allow easy removal for inspection.



Upgrade

A Cable Seal Upgrade Kit is available to achieve an IP67 rated installation

Part no. **SB-8-5** - Standard Junction Box – 5 Screw-Down Terminals

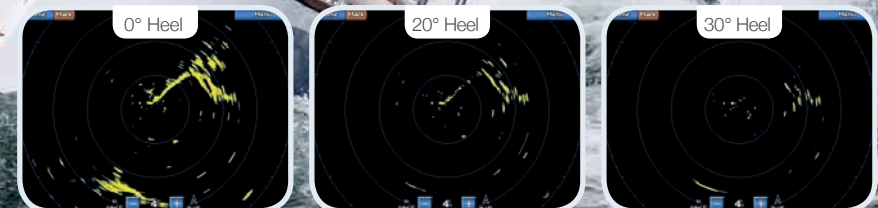
Part no. **SB-8-10** - Deluxe Junction Box – 10 Fast-Fit Terminals

Part no. **SB-2G** - Cable Seal Pack (x 2 per pack)

“Sirius Yacht owners like the pleasant, high quality look of the Self-Levelling Backstay Mount, which offers an ideal and unique installation solution for sailboats”

Sven Duneser - Sirius Yachts

As tested by
YACHTING
MONTHLY



“Picture perfect radar performance”

Mast Mounts

The original and first choice for boat owners around the world, Scanstrut Mast Mounts are a cost-effective and space-saving solution for installing your radome or satcom antenna.

Larger mounting foot is stronger, stiffer and now easier to fit than ever.

Universal Mounting

Attaches to the mast with four swivel feet, matching a variety of mast profiles.

Safety Wire Kit

Safety wire kit independently attaches scanner to mast.

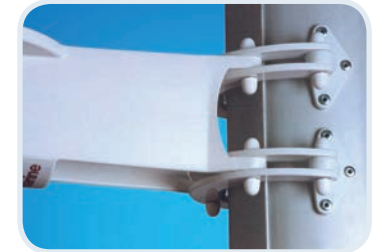
Scanstrut Mast Mounts are officially approved and sold by Raymarine, Garmin, Simrad, B&G, Lowrance and Furuno.



Accessories

Mast Mount Adapter Kit

- For masts with an integral track at the front making it difficult to fit a Scanstrut Mast Mount
- Use with Z-Spars, Selden, Isomat and Eurospars Masts
- Part no. **50100**



Radar Guards

- Polished stainless guards protect radome from damage and reduces wear on the sails
- Mounted using radome bolts so no extra fastenings are required
- Contact Scanstrut Office to confirm part number required



Self-Levelling Radar Mounts

Beautifully styled and expertly engineered to ensure your radar stays level with the horizon at all times for optimum antenna performance.

As the boat heels or rolls, the radar is kept horizontal preventing target loss whilst providing the best possible radar picture.

Completely maintenance free; no power required.

Accessories

GPS/ VHF Mount for Leveller

- Single mount for installing 1 additional GPS/ VHF antenna above the radar
- 1" x 14 tpi thread
- Part no. **LM-GPS** (for all leveller models)



Backstay Mounted

- Install on both adjustable and split backstays either fore or aft of the backstay
- 2.6m (8'6") aluminium mounting pole – supplied in 2 lengths with hidden joiner piece
- Can be deck, transom or chainplate mounted



Mast Mounted

- Radome cradle with fine tune adjustment for different mast rake angles



Installation options

Pole Mounted

- Based on SC100 Pole Mount
- Adapter unit attaches levelling mechanism onto top of pole



Dual Pole Mounted

- Combines SC100 Pole Mount with Self-Levelling Mast Mount for dual mounting solution
- Two deck struts support additional loading





“The Scanstrut SC100 Pole is fantastic! It offers an effortless fit and can be installed easily by just one engineer. This is a practical and aesthetic solution and is significantly more cost-effective than a customer steel pole.”

SC100 Pole Mount

A versatile pole mount for deck or transom mounting. No customisation or adjustment required.

Choice of Heights

1.9m (6.4') recommended for level deck mounting.

2.5m (8.3') recommended for sloping transoms.

Hidden Cables

Accommodates two cable channels with a cover strip to hold cables in place and out of view.

Additional Support

Two supports provide maximum fore/aft and sideways support.

Easy Storage

Unscrew base and remove pole for racing or winter storage, leaving just a low profile base on deck.

Adjustable Base

Allows for installation on a surface with an angle of up to 90 degrees.

Pole Clamp



Deck Strut



Rail Stand Off



Accessories for SC100 & SC2 Pole

Deck Flood Light

- High performance, 55W sealed beam halogen deck light
- Part no. **SC117** – for use with SC100 Pole Mount
- Part no. **SC117-4** – for use with SC2 Pole Mount

Lifting Crane

- Ideal for lifting heavy outboards, luggage, supplies on-board
- For lifting up to 30kg (66lbs) in weight
- Quick release pins allow easy removal for storage
- Part no. **SC120** – for use with SC100 Pole Mount
- Part no. **SC120-4** – for use with SC2 Pole Mount



SC2 Pole Mount

Offering a 100% reliability track record through the toughest sailing conditions, making it the perfect choice for offshore sailors the world over.

Deck Mounted

Ideal for installation on decks, cabin roofs, low arches and other areas where minimal elevation is required.

Through Deck Mounted

Perfect for blue water yachting and designed for yachts from 12m (40') upwards.

***an additional Satcom Antenna Mount will be required to install 40cm and 60cm satcom antenna.**

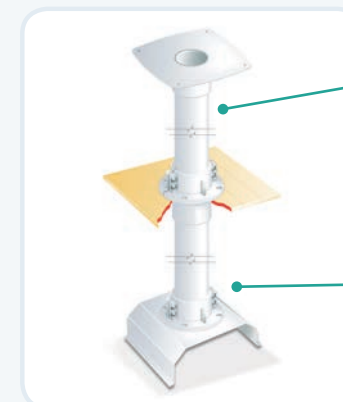
Installation options

Deck Mounted



1.0m (3.3') height

Through Deck Mounted



Choice of height 3.0m / 4.0m

A unique collar system clamps pole at deck level and also at its GRP base inside the boat



Tapered Mast

Single combination mount for multiple marine electronics.

Each item is positioned for maximum performance.

Multiple Install

Install up to 4 GPS/ VHF antennas.

- Options to mount your radome with either a camera or satcom in the same installation

Undrilled top plate to fit any light



Hollow wings and stem for internal cable routing

Satcom Tapered Mast



Options available to mount additional 30cm/ 40cm satcom at the top of the mast

PowerTower



Install your antenna on the cabin roof, flybridge or radar arch of your powerboat.

Antenna fastens to PowerTower using own mounting bolts.

Easy Install

Pre-drilled mounting holes for easy installation.

Hidden Cables

Internal cable management across all models.

No Sealant Required

Watertight base seal included; no need for messy sealant to be used.

NEW Aluminium PowerTower

Strong for heavier equipment.

- White Powder Coated
- **NEW** 25 degree aft models have optional Central Accessory Bar
- Choice of 150mm (6") or 250 (10") heights
- Internally mounted Scanstrut DS-30 cable seal



Composite PowerTower

Lightweight, suits any boat.

- Gloss white finish
- 30 degree aft leaning
- Choice of 150mm (6") or 350mm (14") heights



Stainless PowerTower

Ideal for narrow RIB arches.

- Highly polished mirror finish
- 30 degree aft leaning
- 150mm (6") height



Satcom PowerTower

Elevated antenna mounting with small footprint.

- Option of vertical aluminium or aft leaning stainless steel mount
- 300mm (12") height



Dual PowerTower

Elevates the satcom antenna above the radar.

- Eliminates antenna interference
- Ensures maximum performance from both applications
- Space saving solution



Compact Dual PowerTower

Adjustable mounting plate allows for variation in radome size.

- Positions the radar as close as possible to the structural centre of gravity
- Ensures minimal load is placed on the radar arch



Accessories

Nav Light Mount & GPS/ VHF Antenna Mount

- Part no. **SC110**
For Nav Lights (mount port of radar)
- Part no. **SC111** – For GPS/ VHF Antenna (starboard side)
- Part no. **SC112** – For GPS/ VHF Antenna (port side)
- Part no. **SC113** – Pre-fitted Hella Marine NaviLED 360 degree all round white light (port side)
- **SC110, SC111, SC112 & SC113**
compatible with PowerTower & SC100 pole.



Central Accessory Bars

- APT-GPS-01 **NEW** Central GPS / VHF Antenna Bar - For APT-150/250 ONLY
- APT-LB-01 **NEW** Central Lightbar - For use with the APT-150/250 ONLY
- APT-LB-GPS2-01 **NEW** Central Bar for 2 x Antenna + 1 x Navlight - For APT-150-01/250-01 ONLY



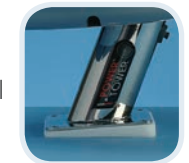
Gantry Mount

- Combined mounting solution for navigation and search lights, GPS and VHF antenna
- Part no. **SC118** – Compatible with Aluminium and Stainless PowerTowers only.
- **Gantry Mount**
(for Dual PowerTower ONLY)
- Mounts anchor lights, all round white lights, steaming and aft lights
- Part no. **SC114-40** (40cm Satcoms)
- Part no. **SC114-60** (60cm Satcoms)



4 Degree Base Wedge

- Angles your radar down 4 degrees below horizontal providing a level horizon for your radar when the boat is bow's up underway
- Fits under PowerTower with a base seal to ensure a watertight install
- Part no. **PT3010** (For Composite and Aluminium PowerTower)
- Part no. **SPT2010** (For Stainless PowerTower)





SIMRAD



SCANSTRUT

Raymarine



SIMRAD



SCANSTRUT

Satcom Antenna Mount

Reduces the footprint size of your satcom antenna by up to 60%.



Strong & Long Lasting

- Single piece composite GRP moulding for high strength
- Corrosion resistant

Watertight

- Seal fits between the mount and antenna to ensure a watertight installation

Easy Access

- Antenna fixings are external to aid installation and maintenance

Additional Mounting Options

- Stainless Steel mounts available to install larger KVH M9 and Intellian i9 antenna

TIP: Mounting on a curved arch? The Adjustable Base Wedge will solve your problem and level your installation. Accessories Available (for Satcom Antenna Mount Only).

Adjustable Base Wedge

Provides a level mounting platform on slopes from 0 to 12 degree.

Part no. **SC50**



Passive Hinge Kit

Designed to lower the height of your installation for boat stacking or passing under bridges.

- For 30cm Satcom Antenna Only
- Fastened by hand so no tools required

Part no. **HS-01**



Camera Mounts



Mast Mount

Compact Mast Mount for installation onto yacht masts.

- Compatible with selected FLIR and Raymarine cameras

Part no. **CAM-MM-01**

PowerTower

Raise your camera from the deck to ensure clear visibility at all times.

- Compatible with selected FLIR, Raymarine and VEI cameras + lights from NVTI, Sanshin & ACR

Part no. **CAM-PT-150** (150mm, 6" height)

Part no. **CAM-PT-300** (300mm, 12" height)



GPS Mounts



Cost effective mounts for up to 4 GPS/ VHF antennas.

Easy to install

- Options for pushpit rails, cabin roof and decks

Strong and Sturdy

- Made from Marine Grade 316 Stainless Steel

Neat and Compact

- Cables all internally routed and hidden away for neat install

T-Pole

Fully adjustable deck base fits any surface; sloping or flat.

Adjustable Height

- 1.5m (5') pole can be shortened if necessary upon installation

Optimum View

- Rotate aerial bar to orientate the antennas during install

Part no. **TP-01**



T-Bar

Perfect for mounting onto a variety of surfaces.

Rotate aerial bar during install to orientate antennas.

Part no. **TB-01**

Mount up to 4 GPS/ VHF Antenna



Rail Mount

Attach a single antenna to a pushpit rail.

Part no. **RA-01**

Fits to rails of 25.4mm (1") diameter



TIP: Use a Scanstrut Deck Seal to secure cables through the deck or transom. See pg. 1 for details.

“ We recommend Scanpods...as they allow more flexible options for mounting, protecting and combining multiple instruments for our customers. Garmin only wish to work with the best and Scanstrut continually prove themselves to be just that ”

Nigel Craine - European Marine OEM Sales Manager, Garmin

Scanstrut Scanpod Pre-Cut Service

Available now

Take the hassle out of having to cut the front of your new Scanpod with the Scanstrut Pre-Cut Service. Fronts are cut to fit your electronics and delivered to you ready to install!

Which displays and instruments can you fit in a Scanpod?



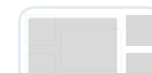
1 Standard Instrument
Part no. **SPR-1i-AM**
or **SPR-1i-RM**



7" to 15" Standard Displays
Part no. **SPD-7(S)-W,**
SPR-7(S)-RM,
SPR-7(S)-AM,
SPD-8(D)-W,
SPH-8(D)-W,
SPD-12(D)-W,
SPH-12(D)-W,
SPD-15D-W



8" Display & 2 Standard Instruments
Part no. **SPD-15D-W,**
SPH-15D-W



12" Display & 2 Standard Instruments/
8" Display & 4 Standard Instruments
Part no. **SPH-SYSTEM-W**



7" Display & 2 Standard Instruments
Part no. **SPH-4Xi-W**



3 Standard Instruments
Part no. **SPH-3i-W**
or **SPM-3i-W**



4 Standard Instruments
Part no. **SPH-4i-W,**
SPD-4Xi-W,
SPM-4i-W



7" Display & 2 Standard Instruments
Part no. **SPD-4Xi-W**



2 Maxi Instruments
Part no. **SPM-2MAXI-W**



3 or 4 Maxi Instruments
Part no. **SPM-MAXI-W**

Scanpod



Helm Pod

The perfect choice for all cockpit configurations.

Universal Helm Fixing

- Fits pedestal rails from 25.4 to 33.7mm (1" – 1 1/4")
- Fits rail widths from 178mm (7")

No Drill Fixing Kit

- Customised U-Bolts fit around the rail and through the saddles into the back of the pod
- Time consuming, awkward drilling of the stainless rail is eliminated



FREE SUNCOVER



Secure and Watertight Install

- A saddle system supports the stainless tubing to allow a secure and rigid fit onto any pedestal
- Ensures a watertight seal at cable entry

Deck Pod

Solve the challenge of finding a level mounting surface to install your displays onto your powerboat, RIB or sailboat wheelhouse.

Fully Adjustable

- Easy-to-release lever can be operated with one hand
- Swivel the pod, tilt to your requirements, then lock back into position

Optimum Viewing Angle

- An adjustable ball joint allows a range of movement and multiple mounting angles

Added Strength

- An inner bracing plate secures the Deck Pod base to the Pod and adds rigidity to the assembly
- Also eliminates potential damage from shock and vibration

TIP: Wheelhouse fishing boat? Simply rotate to view in wheelhouse or on deck.



Flex Mount System Accessory

Use in combination with the Scanstrut Helm Pod. Simply clamp onto your existing rail or steering binnacle and install your helm pod as normal.



Tilt or rotate as required for the optimum view of your screen.

- For 1 and 1 1/4 rail sizes
- Requires 60mm (2.4") of straight rail to mount
- Quick release lever means you can simply unlock, adjust angle of screen, then relock into position



Flex Mount Part Nos.

Part No. Use With Helm Pod

SPFM-RM1-8*	SPH-8D
SPFM-RM1-12*	SPH-12D
SPFM-RM1-15	SPH-15D

*Compatible with Deep Pod ONLY.

Rail Pod

Allows smaller instruments and chartplotters to be rail mounted anywhere onboard.

Options to Install

- Designed to install 7" displays or 1 standard instrument

Neat Cable Management

- Cables are routed internally through clamp and into the rail

Arm Mounted

Extend the pod away from narrow or crowded rails for optimum viewing.



Rail Mounted

Fit your display onto standard or curved rails. Viewing angle can be set upon installation and cables are routed internally.



Mast Pod

Whether racing or cruising, our Mast Pods give you the best view of our instruments.



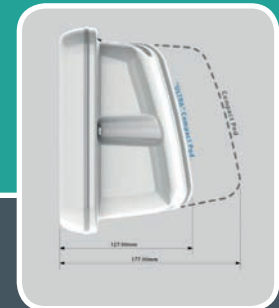
Universal Mount

- Designed to fit mast sizes from 76mm (3") to 223mm (8.8")

Rigid Install

- Mast arms pivot around semi circular washers and a cross-brace prevents sideways movement of the pod

NEW for 2016



Brand New Ultra Compact 7" Scanpods

Designed with the latest generation screens in mind, the new Ultra Compact 7" Scanpod Range is as low profile as it can get.

- Achieves a neat and streamlined look
- Perfect for installations where there is limited space available
- Rail, Arm and Deck Mount options available

NEW for 2016

A universal, compact and adjustable mounting system for smart phones, tablets, small fish finders, digital & action cameras



ROKK™

“ I am very impressed with the ROKK Mini mounting system! I especially like the locking features of the adjustable body as well as the quality of the range of base and top plate options. Built from high quality materials and easy to install with great flexibility for many different size electronics, I definitely recommend the ROKK Mini ”

Gene Ellison - The Fishing Machine



Top Plate*	iPad, iPad Air, iPad Mini	Google Nexus 7	Samsung Galaxy Note	iPhone 4, 5, 6, 6+, 6s	Samsung Galaxy 3, 4 Note	HTC 1	Handheld VHF Radios	Handheld GPS	GoPro, Garmin Virb X/XE	All Cameras with 1/4" thread	Raymarine Dragonfly 4/5
RL-508	X	X	X								
RL-509				X	X	X	X	X			
RL-510									X		
RL-511										X	
RL-512											X

For any devices or electronics not listed above, please contact the Scanstrut Office to confirm compatibility.

*ROKK Mini Body & Base Plate Sold Separately.

NEW ROKK Mini

ROKK Mini is a compact and multi adjustable mounting system for smart phones, tablets, small fish finders, digital and action cameras.

Small in size but big on features, ROKK Mini is simply the toughest, most reliable mount for your tech onboard. No compromise.

ROKK Mini Adjustable Body

Versatile

A choice of base mounts to mount your devices how you want, where you want.

More than a Mount

Designed, not just made; with features that you'll feel and hear more than you'll see.

Quick Fit | Quick Release

Install your devices instantly onboard. With one reassuring click your tech is both secured and released.

Solid Install

A metal-on-metal locking system multiplies your clamping efforts to achieve 100% locking force. Your electronics will never move; until you want them to.



1. What do you want to mount?

"Choose which electronic you would like to mount"

Universal Tablet Clamp

Secure mount for mini and full size tablets. Ratchet Adjustable.

Fits devices from 125mm to 210mm (5 – 8 1/4").

Part no. **RL-508**



Universal Phone Clamp

Secure mount for smart phones, handheld GPS and other small devices. Ratchet adjustable.

Fits devices from 45mm to 95mm (1 3/4" – 3 3/4").

Part no. **RL-509**



GoPro Plate

Fits directly to GoPro Camera (all models) + Garmin Virb X/XE.

Part no. **RL-510**



1/4" Thread Camera Plate

Standard 1/4" thread mount for digital and action cameras.

Fits a wide range of devices featuring a 1/4" thread mounting point.

Part no. **RL-511**



Raymarine Dragonfly 4 & 5 Mount

Fits directly to Raymarine Dragonfly 4 & 5 for a low profile install.

Standard Raymarine ball & socket mount not required.

Part no. **RL-512**



**All ROKK Mini Top Plates are also compatible with the ROKK Midi Range*

2. How do you want to mount it?

"Wherever and however you want to mount your electronics, there's an option for you"

ROKK Mini Surface Mount

Screw Down Base Mount.

Fits any flat surface.

Part no. **RLS-401**



ROKK Mini Rail Mount

Rail Mount Base.

Fits wide range of rails from 19mm – 34mm (3/4" – 1 1/4").

Includes 3 x soft rail grip pad inserts for the perfect fit.

Part no. **RLS-402**



ROKK Mini Cable Tie Mount

Over-size rail mount base.

Fits wide range of non standard rail sizes.

Includes soft rail grip pad inserts.

Part no. **RLS-403**



ROKK Mini Self Adhesive Surface Mount

3M self-adhesive base mount.

Fits any flat surface.

No drilling required to install.

Part no. **RLS-404**



Accessories

ROKK Mini Safety Tether

Use your devices safely and in confidence after detaching from ROKK Mini Body. Attaches to fixture point on ROKK Mini Body Base.

Part no. **RL-TETH**



ROKK™

“ROKK is an apt name for Scanstrut’s adjustable mount system. The fine machining of the metal-on-metal ball and socket joints makes it easy to precisely position your electronics. A modest twist on the white handle then renders the whole installation rock solid.”



ROKK Midi

A multi position mount for small electronic devices onboard.

Install fishfinders and chartplotters at the helm, RIB console, fishing boat dashboard, nav station and more!

Modular Design

- Designed to be versatile. Mount anywhere onboard
- Corrosion resistant alloy castings, anodised and powder coated for extreme marine durability

- Engineered to withstand high shock loads of up to 3g



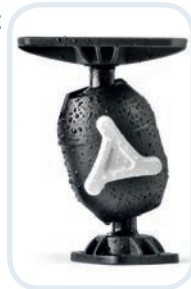
How to order

Step 1: Select ROKK 'body'. Choice of 4 options:

Adjustable Deck Mount

With 360 degree of rotation, this 'Set & Forget' system ensures zero loss of clamping force over time with minimal user effort.

Part no. **RL-ADM**



Adjustable Rail Mount

Fit the Adjustable Rail Mount to rails from 24.4mm to 33.7mm (1 – 1 ¼") diameter.

Part no. **RL-ARM**



Rail Mount

Install instruments directly onto pushpit or pedestal rails.

Fits rails from 25.4mm to 33.7mm (1" to 1 ¼") diameter.

Part no. **RL-RM**

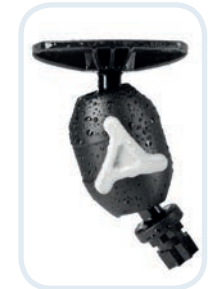


Adjustable Mount for Railblaza

All the functionality of the Adjustable Deck Mount with a Railblaza Starport Compatible Base.

Fit and remove your marine electronics with ease.

Part no. **RL-ARB**



Step 2: Choose compatible 'top plate' for your marine electronics:

Part No.	Humminbird			Garmin		Raymarine				Lowrance			B&G	Lifedge	AMPS	
	300 - 700 Series	800 Series	900 Series	GPS Map 700, EchoMap 70 Series, EchoMap 9 Series, GPSMap 7407/7607	EchoMap 4 Series, EchoMap 5 Series	Dragonfly, Dragonfly 7	E7, E7D	A6/A7	Elite 4	HDS-5 (Gen, 1,2 & 3), HDS-7 (Gen 1 & 2)	Elite 5, Mark 5	Elite 7	HDS-9 (Gen 3)	Zeus2 7, Zeus T8	Surface Mount Kit	Universal
RL-501	X															
RL-502					X	X										
RL-503									X		X					
RL-504		X	X				X			X		X	X	X		
RL-505															X	X
RL-506								X								
RL-507				X												
RL-507																

For additional compatibility please see the ROKK Mini Product Table on Page 13. New Mounting Options for GoPro, Raymarine Dragonfly and more!

“My iPhone 5 case from Lifedge protected my iPhone completely! The best bit of kit I took with me”

lifedge[®]

“The Multiclip was great for swinging in the trees at GoApe and the iPhone case worked perfectly for keeping my phone protected from mud and rain”

NEW Lifedge Ultimate Charge/ Sync Cable

Ultra-tough, completely weatherproof and 2.0m (6.5ft) long for real-world convenience, stay connected wherever you are and whatever you're doing with the Lifedge Lightning to USB Charge Cable. Supplied with a Lifetime Guarantee and tangle-free cable carrier, the Lifedge Cable is officially approved by Apple and compatible with iPhone, iPad and iPod. Say hello to a new freedom outdoors, today.

- Fully sealed and 100% waterproof
- Corrosion Resistant
- Fray Proof
- Compatible with all Lifedge iPhone and iPad cases



Point of Sale
Available Now!



Lifedge Waterproof Cases

Lifedge iPad and iPhone cases are 100% waterproof, shockproof and corrosion resistant. Perfect for use onboard and outdoors.

With your technology safe in a Lifedge case you are free to run apps, navigate, check the forecast, take photos and much more; all in complete confidence that your iPhone or iPad is completely protected.

Waterproof Case for iPad

Fits iPad 2, 3 & 4



Waterproof Case for iPhone

Fits iPhone 5 & 5s



Lifedge Accessories

Bike Mount

- Fits bars or rails from 22mm to 34mm (0.85 to 1.28")
- Safe, strong clamp keeps iPhone securely in place



Multiclip

- Mounts iPhone case forward or rear facing for choice of cameras
- Fix to a backpack, belt loop or carabiner



Headphone Connector

- 100% waterproof. Use with Lifedge iPhone or iPad case for great, all weather sound
- Universal. Fits Apple and all other standard headphones



Float

- Adjustable strap fits comfortably on your wrist or secure point onboard
- Gives buoyancy to your tech when on the water



Displays & Instruments Compatibility

Brand	Display	Size	ROKK	HELM POD		RAIL POD		Deck Pod	Mast Pod	
			Top Plate **	Displays	Instruments (3 x / 4 x)	Arm Mounted	Rail Mounted		Instruments (3 x / 4 x)	Maxi Instruments (3 x / 4 x)
B&G	Zeus T7/ Zeus2 7	Display	X	X	X	NEW SPR-7S-AM	NEW SPR-7S-RM	NEW SPD-7S-W	X	X
	Zeus T8/ Zeus 2	Display	X	SPH-8-W	X	X	X	SPD-8-W	X	X
	Zeus 8	Display	X	SPH-8D-W	X	X	X	SPD-8D-W	X	X
	Zeus 9	Display	X	SPH-12-W	X	X	X	SPD-12-W	X	X
	Zeus 12/ Zeus2 12	Display	X	SPH-12D-W	X	X	X	SPD-12D-W	X	X
	Zeus2 16	Display	X	SPH-15D-W	X	X	X	SPD-15D-W	X	X
	H3000 GDP/ GFD	Instrument	X	X	SPH-3i-W/ -4i-W	X	X	X	SPM-3i-W/ -4i-W	SPM-2MAXI-W/-MAXI-W
	H3000 Analogue/ Triton	Instrument	X	X	SPH-3i-W/ -4i-W	SPR-1i-AM	SPR-1i-RM	X	SPM-3i-W/ -4i-W	X
	10/10	Instrument	X	X	SPH-3i-W/ -4i-W	X	X	X	SPM-3i-W/ -4i-W	X
	20/20	Maxi Instrument	X	X	SPH-4i-W	X	X	X	X	SPM-2MAXI-W/- MAXI-W
Vulcan 7	X	X	X	SPH-8-W	X	NEW SPR-7S-AM	NEW SPR-7S-RM	NEW SPD-7S*-W/8-W	X	X
Furuno	MFD8	8" Display	X	SPH-8D-W	X	X	X	SPD-8D-W	X	X
	MFD12	12" Display	X	SPH-12D-W	X	X	X	SPD-12D-W	X	X
	MU-155C	15" Display	X	SPH-15D-W	X	X	X	SPD-15D-W	X	X
	TZ Touch - TZT9	9" Display	X	SPH-12D-W	X	X	X	SPD-15D-W	X	X
	TZ Touch - TZT12	12" Display	X	SPH-15D-W	X	X	X	SPD-15D-W	X	X
	TZTL12F	12" Display	X	SPH-12D-W	X	X	X	SPD-12D-W	X	X
	TZT15F	15" Display	X	SPH-15D-W	X	X	X	SPD-15D-W	X	X
	FI-50 STD Instruments	Instrument	X	X	SPH-3i-W/-4i-W	SPR-1i-AM	SPR-1i-RM	X	SPM-3i-W/ -4i-W	X
	FI-50 Multi XL	Maxi Instrument	X	X	X	X	X	X	X	SPM-2MAXI-W/-MAXI-W
	O-Chart Series 5/5F, 7/7F	Instrument	X	SPH-8-W	X	X	X	SPD-8-W	X	X
GP1870/ 1870-F	Instrument	X	SPH-8-W	X	X	X	SPD-8-W	X	X	
Garmin	All 700 Series/ Echo Map 70s	7" Display	RL-507	SPH-8-W	X	NEW SPR-7S-AM	NEW SPR-7S-RM	NEW SPD-7S-W	X	X
	820/840/ GPSMap 8	8" Display	X	SPH-8-W	X	X	X	SPD-8-W	X	X
	4008/5008/6008	8" Display	X	SPH-8D-W	X	X	X	SPD-8D-W	X	X
	1020/1040	10" Display	X	SPH-12D-W	X	X	X	SPD-12D-W	X	X
	4010	10" Display	X	SPH-12D-W	X	X	X	SPD-12D-W	X	X
	4012/5012/6012/7012	12" Display	X	SPH-12D-W	X	X	X	SPD-12D-W	X	X
Garmin cont.	5015/7015	15" Display	X	SPH-15D-W	X	X	X	SPD-15D-W	X	X
	Garmin GPSMap 400-600/ Echo 100-550/ EchoMap 50s	Display	RL-502	X	X	X	X	X	X	X
	EchoMap 7X	Display	X	SPH-8-W	X	X	X	SPD-8-W	X	X
	EchoMap 4 & 5 Series	Display	RL-502	X	X	X	X	X	X	X
	Echomap 7 Series	Display	RL-507	X	X	SPR-7-AM	SPR-7-RM	SPD-7-W	X	X
	Echomap 9 Series	Display	RL-507	SPH-8-W	X	X	X	SPD-8-D	X	X
	GPSMap 10 & 12	10" Display	X	SPH-12-W	X	X	X	SPD-12-W	X	X
	8012/ 8212	Display	X	SPH-12D-W	X	X	X	SPD-12D-W	X	X

Brand	Display	Size	ROKK	HELM POD		RAIL POD		Deck Pod	Mast Pod	
	GMI10	Instrument	X	X	SPH-3i-W/-4i-W	SPR-1i-AM	SPR-1i-RM	X	SPM-3i-W/-4i-W	X
Humminbird	800 Series	Display	X	X	X	SPR-7-AM	SPR-7-RM	SPD-7-W	X	X
	900 Series	Display	X	SPH-8-W	X	X	X	SPD-8-W	X	X
	1100 Series	Display	X	SPH-12-W	X	X	X	SPD-12-W	X	X
	998cx SI	8" Display	X	SPH-8D-W	X	X	X	SPD-8D-W	X	X
	300-700	Instrument	RL-501	X	X	X	X	X	X	X
	Ion 10 & 12	Instrument	X	SPH-12D-W	X	X	X	SPD-12D-W	X	X
	Onix 8 & 10	Instrument	X	SPH-8D-W	X	X	X	SPD-8D-W	X	X
	Helix 7	Instrument	X	SPH-8-W	X	X	X	SPD-8-W	X	X
Lowrance	HDS-5/ HDS-5m/ HDS-5x	5" Display	RL-504	SPH-8-W	X	NEW SPR-7S-AM	NEW SPR-7S-RM	NEW SPD-7S-W	X	X
	Elite 4/ Elite 4 DSI	4" Display	RL-503	X	X	X	X	X	X	X
	Elite 5/ Mark 5	5" Display	RL-503	X	X	NEW SPR-7S-AM	NEW SPR-7S-RM	NEW SPD-7S-W	X	X
	Elite 7	6.4" Display	RL-504	SPH-8-W	X	NEW SPR-7S-AM	NEW SPR-7S-RM	NEW SPD-7S-W	X	X
	HDS-7 (Gen 3) / HDS-7m (Gen 2 Touch)	6.4" Display	RL-504	SPH-8D-W	X	NEW SPR-7S-AM	NEW SPR-7S-RM	NEW SPD-7S-W	X	X
	HDS-8/ HDS-8m	8.4" Display	X	SPH-8D-W	X	X	X	SPD-8D-W	X	X
	HDS-10/ HDS-10m	10.4 Display	X	SPH-12D-W	X	X	X	SPD-12D-W	X	X
	HDS-12	12" Display	X	SPH-12D-W	X	X	X	SPD-12D-W	X	X
Nexus	NX, NX2 Digital, NX2 Analogue	Instrument	X	X	SPH-3i-W/-4i-W	SPR-1i-AM	SPR-1i-RM	X	SPM-3i-W/-4i-W	X
	NX2 Multi XL, NXR Multi	Maxi Instrument	X	X	X	X	X	X	X	SPM-2MAXI-W/-MAXI-W
Raymarine	G120/ G150	12" Display	X	SPH-15D-W	X	X	X	SPD-15D-W	X	X
	e7 & E7D	7" Display	RL-504	SPH-8-W	X	SPR-7-AM	SPR-7-RM	SPD-7-W	X	X
	E90W/ a95	9" Display	X	SPH-8D-W	X	X	X	SPD-8D-W	X	X
	C95/ C97/ E95/ E97	9" Display	X	SPH-8-W/-8D-W	X	X	X	SPD-8-W/-8D-W	X	X
	E120W	12" Display	X	SPH-12D-W	X	X	X	SPD-12D-W	X	X
	a125/ C125/ C127	12" Display	X	SPH-12-W	X	X	X	SPD-12-W	X	X
	E140W/ E165W	15" Display	X	SPH-15D-W	X	X	X	SPD-15D-W	X	X
	i50/ i60/ i70/ p70/ p70R	Instrument	X	X	SPH-3i-W/-4i-W	SPR-1i-AM	SPR-1i-RM	X	SPM-3i-W/-4i-W	X
	ST70+	Maxi Instrument	X	X	X	X	X	X	X	SPM-2MAXI-W
	A65/ A67/ A68	6" Display	RL-506	SPH-8-W	X	SPR-7-AM	SPR-7-RM	SPD-7-W	X	X
	Maxi Display T200 Series	Maxi Instrument	X	X	X	X	X	X	X	SPM-2MAXI-W
	T100 Series	Display	X	X	SPH-3i-W/-4i-W	SPR-1i-AM	SPR-1i-RM	X	SPM-3i-W/-4i-W	X
	Dragonfly/ Dragonfly 7	Display	RL-502	X	X	X	X	X	X	X
	A127/ A128	Display	X	SPH-12-W	X	X	X	SPD-12-W	X	X
	GS125	Display	X	SPH-12-W/-15-W	X	X	X	SPD-12-W/-15-W	X	X
	eS75/ 77/ 78	Display	X	SPH-8-W	X	SPR-7-AM	SPR-7-RM	SPD-7-W	X	X
	eS95/ 97/ 98	Display	X	SPH-8D-W	X	X	X	SPD-8D-W	X	X

* = only if panel mounting

** Order ROKK 'Body' Separately (see page [15])

Please note SPH-8-W Scanpod fits 6-8" centre pedestal rails. To fit rail from 7" upwards please order SPH-8D-W
Fit multiple instruments and displays in one Scanpod. See page [11] for further information.

Displays & Instruments Compatibility

Brand	Display	Size	ROKK	HELM POD		RAIL POD		Deck Pod	Mast Pod	
	ES125/ 127/ 128	Display	X	SPH-12D-W	X	X	X	SPD-12D-W	X	X
Simrad	IS70/ IS80	Instrument	X	X	SPH-3i-W/ 4i-W	SPR-1i-AM	SPR-1i-RM	X	X	X
	NSE-8	8" Display	X	SPH-8D-W	X	X	X	SPD-8D-W	X	X
	NSE-12	12" Display	X	SPH-12D-W	X	X	X	SPD-12D-W	X	X
	NSS-7/ NSS-7 Evo 2, GO7	7" Display	X	SPH-8-W	X	NEW SPR-7S-AM	NEW SPR-7S-AM	NEW SPD-7S-W	X	X
	NSS-8/ NSS-9 Evo 2	8" Display	X	SPH-8-W	X	X	X	SPD-8-W	X	X
	NSS-12/ NSS-12 Evo 2	12" Display	X	SPH-12-W	X	X	X	SPD-12-W	X	X
	NSS16 Evo 2	15" Display	X	SPH-15D-W	X	X	X	SPD-15D-W	X	X

Radar & Satcom Compatibility

Brand	Model	Scanner Type	Mast Mount	Self Levelling Radar Mount				SC100 Pole		PowerTower				Tapered Mast		Satcom Antenna Mount
				BACKSTAY Fwd (F)/ Aft (A)	POLE	MAST	DUAL POLE (? = Satcom)	1.9m (6.5')/ 2.5m (8.4')	Composite 150mm (6")/ 350mm (14")	S/Steel 150mm (6")	Aluminium 130mm (5")/ 250mm (10")	S/Steel-Satcom Aluminium	Dual PowerTower	RADAR ONLY	WITH SATCOM	
B&G	BR24/3G/4G	18" Radome	SC20	LMB-F1/ A1	LMP-1	LMM-1	DLMP-1-?	SC101/2	PT2004/PT2001	SPT1001	APT-150-01/ APT-250-01	X	Satcom -30/ -40/ -60	PTM-R1-1	PTM-R1-S40	X
Furuno	DRS2D/ DRS4W	18" Radome	SC12	LMB-F2/A2	LMP-2	LMM-2	DLMP-2-?	SC103/4	PT2005/PT2002	SPT1002	APT5U*	X	DPT-SR1-30/-40/-60	PTM-R1-2	PTM-R2-S40	X
	DRS4D/ 1835	24" Radome	SC21	LMB-F2/A2	LMP-2	LMM-2	DLMP-2-?	SC103/4	PT2005	SPT1002	APT5U*	X	DPT-SR1-30/-40/-60	PTM-R1-2	PTM-R2-S40	X
	DRS4A/ 1935	3.5' Open-Array	X	X	X	X	X	X	X	SPT1005	APT6003	X	DPT-40-SO3/-60	X	X	X
	DRS6A/ DRS12A	4' Open Array	X	X	X	X	X	X	X	SPT1005	APT6003	X	DPT-40-SO3/-60	X	X	X
	SC30	Sat Compass	X	X	X	X	X	SC103/4	PT2005/ PT2002	SPT1002	APT5U*	X	DPT-40-SO3/-60	X	X	X
Garmin	GMR18/ 18HD	18" 4kW Radome	SC20	LMB-F1/A1	LMP-1	LMM-1	DLMP-1-?	SC101/2	PT2004/ PT2001	SPT1001	APT-150-01/-250-01	X	DPT-SR1-30/-40/-60	PTM-R1-1	PTM-R1-S40	
	GMR24/ 24HD	24" 4kW Radome	SC21	LMB-F1/A1	LMP-1	LMM-1	DLMP-1-?	SC101/2	PT2004/ PT2001	SPT1001	APT-150-01/-250-01	X	DPT-SR1-30/-40/-60	PTM-R1-1	PTM-R1-S40	X
	GMR2524xHD2	4' Open Array	X	X	SC2	X	X	X	X	SPT1005	APT6003	X	DPT-SO2-40/60	X	X	X
	GMR424 / 624 / 1224 xHD2	6' Open Array	X	X	SC2	X	X	X	X	SPT1005	APT6003	X	X	X	X	X
Intellian	i2	Satcom	SC12	X	X	X	YES (-U)	SC103/4	PT2005/ PT2002	X	X	SATPT-40(S)	YES (-30)	X	X	SC30
	i3	Satcom	SC20	X	X	X	YES (-30)	SC105-35/6-35	PT2004/ PT2001	X	X	SATPT-40 (S)	YES (-30/-40)	X	X	SC35
	i4	Satcom	X	X	X	X	YES (-45R)	SC105-45R/6-45R	X	X	X	SATPT-40 (S)	YES (-40)	X	PTM-R1-S40/-R2-S40	SC45R
	i6/ i6p	Satcom	X	X	X	X	X	X	X	X	X	SATPT-60 (S)	YES (-60)	X	X	SC65
	i9/ i9p	Satcom	X	X	X	X	X	X	X	X	X	X	X	X	X	SC90
Iridium	Pilot Antenna	22" Radome	X	X	X	X	X	SC107/9	X	X	X	X	X	X	X	X

Brand	Model	Scanner Type	Mast Mount	Self Levelling Radar Mount				SC100 Pole	PowerTower					Tapered Mast		Satcom Antenna Mount
				BACKSTAY Fwd (F)/ Aft (A)	POLE	MAST	DUAL POLE (? = Satcom)	1.9m (6.5')/ 2.5m (8.4')	Composite 150mm (6")/ 350mm (14")	S/Steel 150mm (6")	Aluminium 130mm (5")/ 250mm (10")	S/Steel-Satcom Aluminium	Dual PowerTower	RADAR ONLY	WITH SATCOM	
KVH	TracVision M1/ TV1	Satcom	SC12	X	X	X	YES (-U)	SC103/4	PT2005/ PT2002	X	X	SATPT-40 (S)	YES (-30)	X	X	SC30
	TracVision M3/ TV3	Satcom	SC20	X	X	X	YES (-30)	SC105-35/6-35	PT2004/ PT2001	SPT1001	APT-150-1/-250-01	SATPT-40 (S)	YES (-30/-40)	X	X	SC35
	TracVision M5/ TV5/ FB250	Satcom	X	X	X	X	YES (-45)	SC105-45/6-45	X	X	X	SATPT-40 (S)	YES (-40)	X	PTM-R1-S40/-R2-S40	SC30
	TracVision M7/ TV6/ FB500	Satcom	X	X	X	X	X	X	X	X	X	SATPT-60 (S)	YES (-60)	X	X	SC30
	TracVision M9/ F77	Satcom	X	X	X	X	X	X	X	X	X	X	X	X	X	SC45
	TracVision V7	Satcom	X	X	X	X	X	X	X	X	X	X	X	X	X	SC65
	Fleet Broadband 150	Satcom	SC16	X	X	X	YES (-30F)	SC105/6	X	X	X	SATPT-33	X	X	X	SC80
	Fleet Broadband 250	Satcom	SC16	X	X	X	YES (-30F)	SC105/6	X	X	X	SATPT-33	X	X	X	SC80
	Lowrance	BR24-3G/ 4G	18" Radome	SC20	LMB-F1/A1	LMP-1	LMM-1	DLMP-1-?	SC101/2	PT2004/ PT2001	SPT1001	APT-150-01/-250-01	X	DPT-SR1-30/-40/-60	PTM-R1-1	PTM-R1-S40
LRA 4000		4" 4kW Radome	X	X	X	X	X	X	X	X	APT6002	X	DPT-SR1-30/-40/-60	X	X	X
Raymarine	RD418D/ RD418HD	2kW 18" Radome	M92722	LMB-F1/A1	LMP-1	LMM-1	DLMP-1-?	SC101/2	PT2004/ PT2001	SPT1001	APT-150-01/-250-01	X	DPT-SR1-30/-40/-60	PTM-R1-1	PTM-R1-S40	X
	RD424D/ RD424HD	4kW 24" Radome	M92698	LMB-F1/A1	LMP-1	LMM-1	DLMP-1-?	SC101/2	PT2004/ PT2001	SPT1001	APT-150-01/-250-01	X	DPT-SR1-30/-40/-60	PTM-R1-1	PTM-R1-S40	X
	5S/ 9S	4' Open Array	X	X	X	X	X	X	X	SPT1004	APT6001	X	DPT-SO1-40/-60	X	X	X
	33STV	Satcom	SC12	X	X	X	YES (-U)	SC103/4	PT2005/ PT2002	X	X	SATPT-40 (S)	YES (-30)	X	X	SC30
	37STV	Satcom	SC20	X	X	X	YES (-30)	SC105-35/6-35	PT2004/ PT2001	X	X	SATPT-40 (S)	YES (-30/-40)	X	X	SC35
	45STV	Satcom	X	X	X	X	YES (-45R)	SC105-45R/6-45R	X	X	X	SATPT-40 (S)	YES (-40)	X	PTM-R1-S40/-R2-S40	SC45R
60STV	Satcom	X	X	X	X	X	X	X	X	X	SATPT-60 (S)	YES (-60)	X	X	SC65	
Simrad	BR24-3G/ 4G	18" Radome	SC20	LMB-F1/A1	LMP-F1/A1	LMM-1	DLMP-1-?	SC101/2	PT2004/ PT2001	SPT1001	APT-150-01/-250-01	X	DPT-SR1-30/-40/-60	PTM-R1-1	PTM-R1-S40	X
	GB40/ NX40/ 45	4' 6kW Open Array	X	X	X	X	X	X	X	X	APT6002	X	DPT-40-SO3/-60	X	X	X
	NSEB/ 12TXO6S	4' 6kW Open Array	X	X	X	X	X	X	X	X	APT6002	X	DPT-40-SO3/-60	X	X	X
	Halo 3' 4' 6'	3' 4' 6' 25W Open Array	X	X	X	X	X	X	X	X	APT6003	X	DPT-40-SO3/-60	X	X	X