

SCANSTRUT

outdoor . technologies .



PRODUCT GUIDE

New additions to the range.

ROKK™
WIRELESS.



SC-CW-04E

ROKK Wireless - Active

12/24V wireless waterproof charger.
Designed for an active environment
IPX6 waterproof.
Qi certified.

ROKK™
WIRELESS.

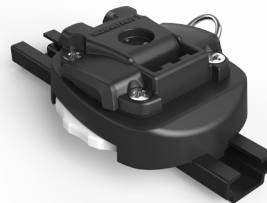


SC-CW-01E/02E/03E

ROKK Wireless

12/24V wireless waterproof charger.
Marine grade materials.
IPX6 waterproof.
Qi certified.

ROKK™
MINI.



RLS-407

Kayak Track Base

Slide. Twist. Lock.
Compatible with all kayak track systems.
Quick and easy one hand install.
ROKK mini compatible.

ROKK™

MINI.



RLS-521-401/2/7

HOOK2 Pro Mount Kit

Grip. Click. Lock.

Designed with Lowrance for HOOK2 4x/5x.

Quick release & adjustable.

3 base options.

SC-100 Pole - Update



SC-100

Product Update

Less tools required.

Upgraded strut base, quicker to install.

One-piece, mirror polished 316 Stainless steel clamps.

Pod 9" & 13"



SPD/SPH-9/13-W

9" & 13" Deck & Helm

Most compact installation.

Sleek modern design.

Easiest installation.

ROKK™


mount.




charge.



ROKK™

WIRELESS.

active.

High-performance 12/24V waterproof wireless charging phone mount, engineered for an active marine environment.

- IPX6 waterproof sealed unit
- Charge your phone up to 6G
- Self-centralizing for optimum charge position
- High friction sliding grip
- Anodized aluminium chassis
- Single handed docking
- Install on any flat surface

NEW



active.

SC-CW-04E

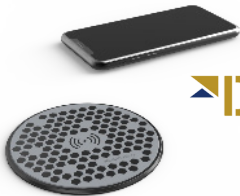
available
spring
2019

ROKK™

WIRELESS.

The IPX6 waterproof 12/24V Qi certified wireless charger range enables phone charging on board. Choose the right mounting preference for your installation from one of our 3 easy install options.

- 12/24V wireless waterproof Qi certified charger
- Qi certified
- IPX6 waterproof
- Easy install
- U.V stable
- Non slip surface
- No sealant required



DAME
NOMINATED
2018

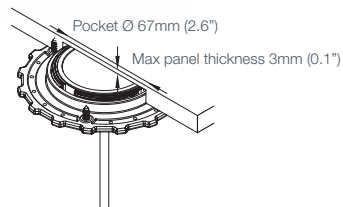
IPX6 CE Qi FC RoHS ECE R10.05

hidden.

SC-CW-01E



Engineered to be installed under the surface and leave the top surface un-cluttered and looking perfect.



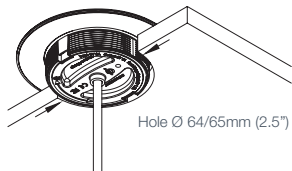


surface.

SC-CW-02E



Low-profile, flush-mounted charge pad with an ultra grippy, non-slip surface.

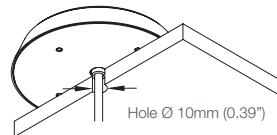


bezel.

SC-CW-03E



The easiest to install, this option includes the non-slip surface pad but simplifies installation even further.



ROKK™

CHARGE+.

12/24V Waterproof USB Charge Socket

SC-USB-02

The ultimate rapid charge waterproof USB charger with dual socket connectivity that can charge devices up to 3x faster than standard USB sockets.

Featuring an ultra low profile, that's perfect for any outdoor application.

- Universal fit for any USB Type-A connector.
- Click & Lock Lid.
- Output current 4.2A (total).
- IPX6 waterproof while in use.
- Up to 3x faster than standard USB sockets.



Selected by



DAME
NOMINATED
2017



OCEAN NAVIGATOR
CHUCK
HUSICK
AWARD
2017

WINNER

ROKK™

CHARGE .

12/24V Waterproof USB Charge Socket

SC-USB-01

Waterproof on-board charging, whatever the weather.

Dual socket will connect and charge devices including phones, tablets, fish finders, chart plotters and more.

Perfect for RIBs, kayaks, sail and powerboats.



ROKK™

CABLE .

USB Charge / Sync Cable Range

CBL-LU-2000 2.0m (6.5ft) Lightning

CBL-MU-2000 2.0m (6.5ft) Micro

CBL-LU-600 60cm (2ft) Lightning

CBL-MU-600 60cm (2ft) Micro

Lightning to USB

- Fast 2.4A Charge Speed
- 2 lengths - 2m/6.5ft & 0.6/2ft
- Rugged and tough
- Approved by Apple

Micro USB to USB

- Fast 2.4A Charge Speed
- 2 lengths - 2m/6.5ft & 0.6/2ft
- Rugged and tough



ROKK™ MINI.

The hi-performance ROKK mini modular system allows you to mount your electronics to boats, cars, off-road vehicles, aircraft and more. Move your device conveniently between different types of base mounts in different locations in one easy click.



Tablet.

Phone.

Fish Finder.

Available as starter kits or individual parts.



NEW

1. Top



2. Body



3. Base





Universal Tablet Clamp
RL-508



Universal Phone Clamp
RL-509



GoPro & Garmin
RL-510



1/4" Camera Thread
RL-511



Raymarine Dragonfly
RL-512



**Lowrance HOOK2
Quick Release Adapter**
RL-521



Screen Track Plate
RL-514

Tops

For devices up to 1.2 KG



Surface Mount
RLS-401



Rail Mount
RLS-402



Cable-Tie
RLS-403



Self-Adhesive
RLS-404



Suction Cup
RLS-405



AMPS base adapter
RLS-406



Kayak T-track
RLS-407

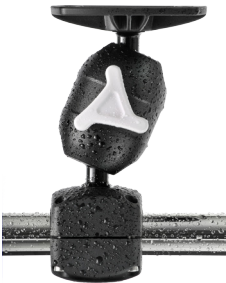
Bases

ROKK™

MIDI.



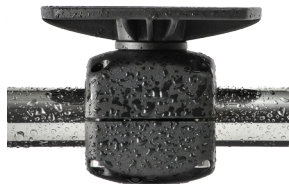
For devices up to 3KG



Adjustable Rail Mount
RL-ARM



Adjustable Deck Mount
RL-ADM



Rail Mount
RL-RM



**Adjustable Mount
for Railblaza**
RL-ARB

A multi-position mount for small electronic devices on board.
Compatible with Garmin, Raymarine, Humminbird, Lowrance, B&G and AMPS screens up to 7”.

ROKK™

TOP PLATES.

Check our online Buyer's Guide for latest compatibility.



Compatible with MINI and MIDI, designed to work with a large range of screens, fishfinders & chartplotters.



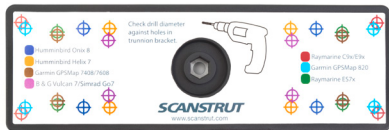
RL-507



RL-506



RL-504



RL-513



RL-519



RL-517



RL-520



RL-503



RL-501



RL-502



RL-515



RL-505



RL-516



RL-518

Waterproof Cable Seals

IPX6 and IPX7 tested and approved.

Guaranteed watertight installation.

Split seal eliminates need to remove cable connectors during installation.



Horizontal Deck Seal

Horizontal entry plastic cable seal,
for cables from 2-10mm.



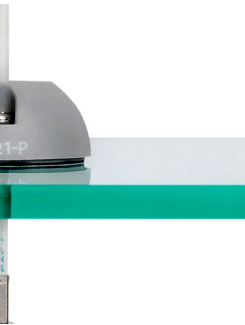
Stainless Steel Deck Seal

For connectors ranging from 16mm - 40mm (.62 - 1.57")
For cables from 2mm - 15mm (.07 - .59")



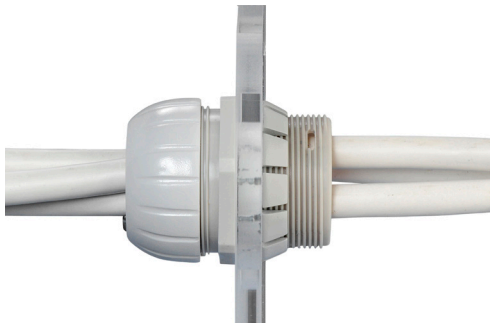
Plastic Deck Seal

For connectors ranging from 16mm - 40mm (.62 - 1.57")
For cables from 2mm - 15mm (.07 - .59")



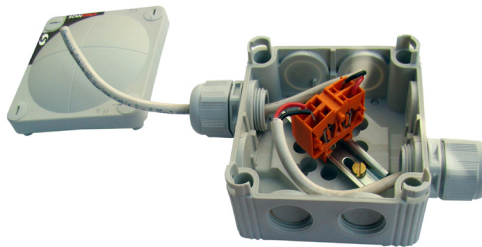
Deck Seal

Up to 16mm - 40mm (.62 - 1.57")
Up to 15mm (.07 - .59")



Through Bulkhead Cable Seal

Up to 4 x cables Ø 7mm (0.28") - Ø 15mm (0.6")
Up to 10 x cables Ø 5mm (0.2") - Ø 7mm (0.28")



Junction Box

Waterproof connections.

Scanpod

Solution for standard instruments up to 15" screens.

Compatible with all major brands.

Check the online Buyer's Guide for latest compatability



Deck Pod

The perfect choice for all cockpit configurations.



Helm Pod

Fits any rail spacing for perfect screen position.



Rail Pod

Fits your display onto any curved rail.



Arm Pod

Fits your display onto any rail.

Radar Mount

A cost-effective and space-saving solution for installing your radome or satcom antenna.

Fixed



Mast Mounted

Self-levelling



Backstay Mounted



Mast Mounted



Pole Mounted
(satcom optional)

Pole Mount

A versatile pole mount for deck or transom mounting. No customisation or adjustment needed. Two heights available. Adjustable base allows for installation on any surface from horizontal to vertical.



Stainless steel deck strut and rail stand-off provide outstanding support.

PowerTower

Central Aluminium Accessory Bars

For APT-150/250 only.



Aluminium PowerTower
For radar and satcom. Ideal for central cable routing as Cable Seal is included.



Composite PowerTower
Lightweight, suits any boat.

Stainless Accessory Bars

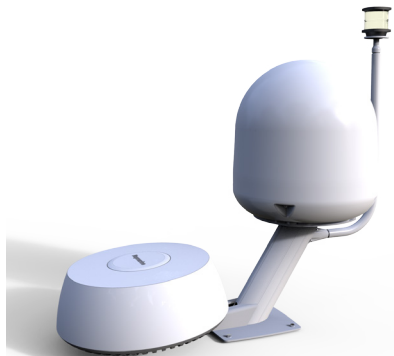
For all PowerTowers.



Stainless PowerTower
Ideal for narrow RIB arches.

Modular Dual PowerTower

NEW



DPT-R-COMP

NEW



DPT-R

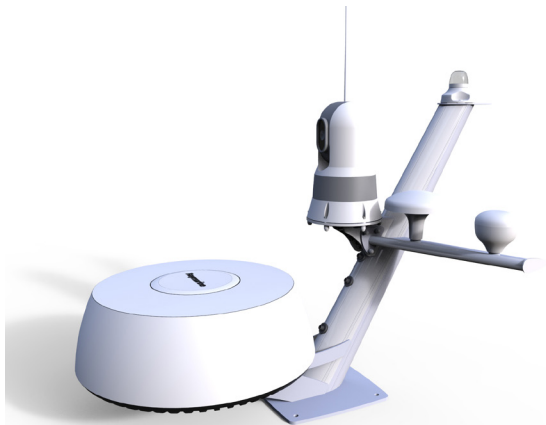
NEW



DPT-OA

Modular mounting system for combining open array, radome, satcom, cameras and lights in one single space saving installation.

Tapered Mast



Single combination mount for radar, lights, GPS/VHF antennas, cameras or search lights.

Now compatible with FLIR M100 & M200 series as standard.

Custom Projects



Full service custom product development: Award-winning, one-stop provider from concept to manufacture.



Satcom Antenna Mount

Reduces the footprint of your satcom by up to 60%.



Passive Hinge Kit

Designed to lower the height of your installation for boat stacking or passing under bridges.



Adjustable Base Wedge

Provides a level mounting platform on slopes from 0-12°.



Camera Mount

Compact mount compatible with selected FLIR and Raymarine cameras.



GPS Mount

Perfect for mounting up to 4 GPS/VHF antennas.

Learn more about marine electronics and navigation on our website.