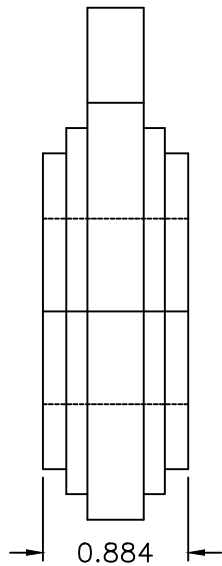


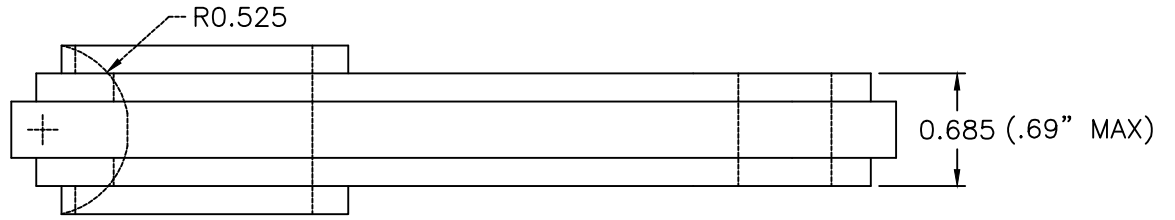
Fill-in welding to radius .5" and grind.

Section A-A

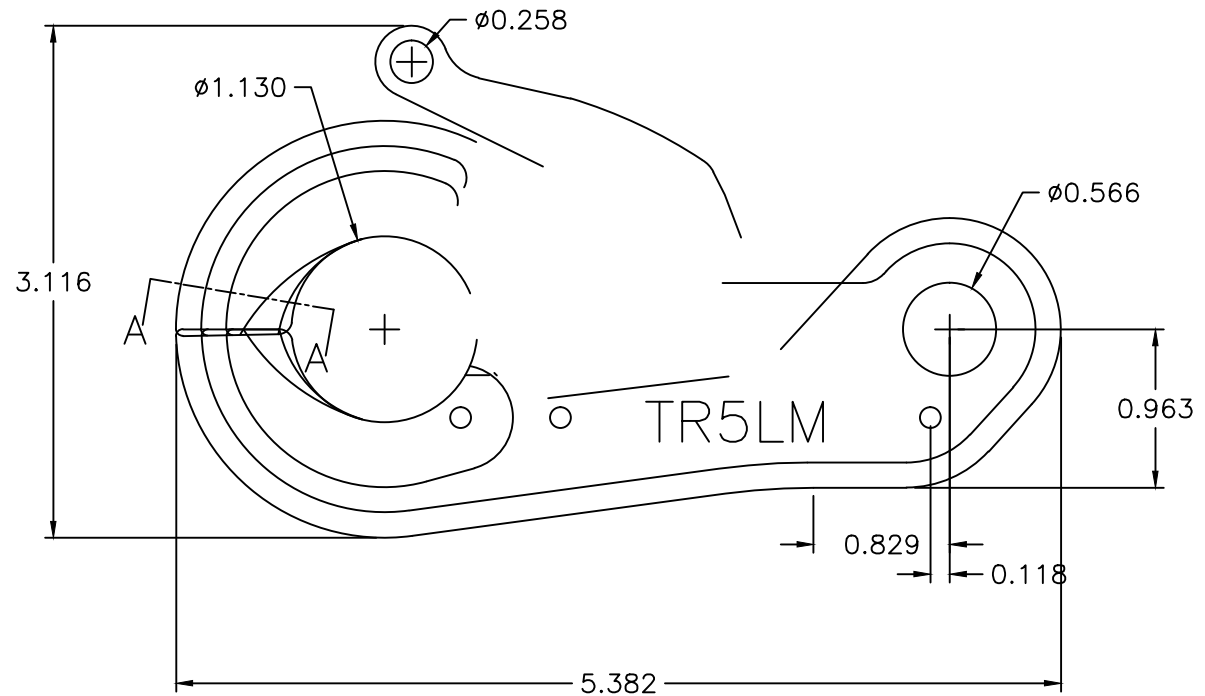
.375



Front End View



Top View



Side View

Material: 15-5 PH Stainless Plate in 1/8" and 3/8" nominal thickness.

OPEN JAW OPENING: .918" (23.31mm)

SWL: 3,323 lbs

**McMillan**  
DESIGN, INC.

Sea Catch TR5LM

SCALE: NTS

DRAWN BY JHM

DATE: 12-25-98

REVISED: 09-28-04

© 2010 JOHN McMILLAN

DRAWING NO. 092804B

CONFIDENTIAL: THIS DESCRIPTION OR DRAWING CONTAINS PROPRIETARY INFORMATION OF JOHN MCMILLAN AND IS LOANED FOR USE ONLY IN EVALUATING OR BUILDING AN INVENTION OF JOHN MCMILLAN AND MUST BE RETURNED UPON DEMAND. BY ACCEPTANCE HEREOF, RECIPIENT AGREES TO ALL OF THE ABOVE CONDITIONS. © 2010 JOHN MCMILLAN