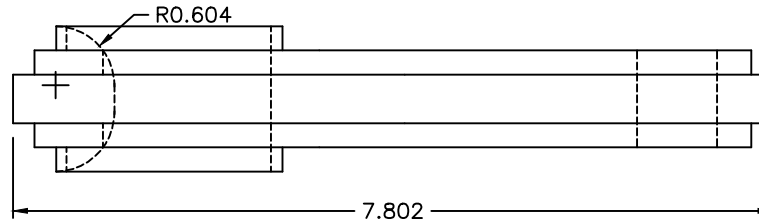
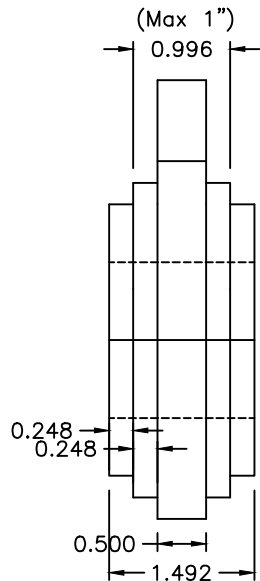


Section A-A

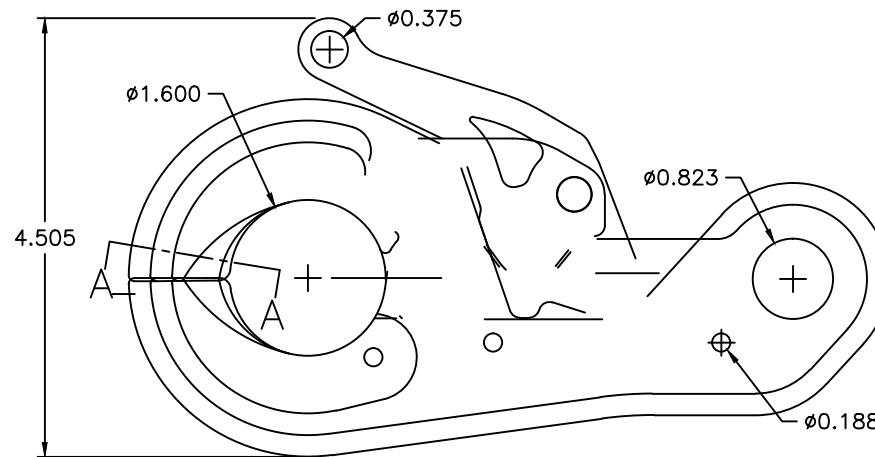
Fill-in welding to radius .6" and grind.



Top View



Front End View



Sea Catch TR7LM Assembly

Specs:
 Weight: 4.8 lbs
 Breakload: 35,210 lbs
 SWL: 7,042 lbs
 Recommended shackle (rear): 5/8"
 Open Jaw Opening: 1.25"

Material: 15-5 PH
 Stainless Plate in
 1/2" and 3/16"
 nominal thickness.

Approx. unit weight: 4.5 lbs.

McMillan
 DESIGN, INC.

TR7LM

CONFIDENTIAL: THIS DESCRIPTION OR DRAWING CONTAINS PROPRIETARY INFORMATION OF JOHN MCMILLAN AND IS LOANED FOR USE ONLY IN EVALUATING OR BUILDING AN INVENTION OF JOHN MCMILLAN AND MUST BE RETURNED UPON DEMAND. BY ACCEPTANCE HEREOF, RECIPIENT AGREES TO ALL OF THE ABOVE CONDITIONS.

SCALE: NTS

DRAWN BY JHM

REVISED: 03/05/04

© 2002 JOHN MCMILLAN

DRAWING NO. 030504A