



SB27263/SB27265/SB27267

BIG-T BEZEL KIT INSTRUCTIONS

INSTALLER: THESE INSTRUCTIONS CONTAIN IMPORTANT SAFETY INFORMATION AND MUST BE FORWARDED TO THE BOAT OWNER.

THIS KIT CONTAINS THE PARTS REQUIRED TO INSTALL A BIG-T HELM TO A BOAT DASHBOARD OR CONSOLE.

Additional items required to complete the installation are:

BIG-T Helm Part No. SH5000
Steering Wheel (See catalog), selected in accordance with BIA helm rating standards.

CAUTION

READ THESE INSTRUCTIONS THOROUGHLY BEFORE PROCEEDING WITH INSTALLATION. CHECK CONTENTS OF KIT AGAINST PARTS LIST ON THIS INSTRUCTION SHEET. PARTS SUPPLIED MUST BE USED PER INSTRUCTIONS. THE COMPANY CANNOT ACCEPT RESPONSIBILITY FOR THE INTEGRITY OF INSTALLATIONS IN WHICH SUBSTITUTE PARTS ARE USED.

PREPARATION FOR INSTALLATION

1. Steering cables, if possible, should be routed to the starboard side of the boat in order to balance engine torque. A minimum horizontal clearance of 12" (300mm) is required from the gunnel to the center of the Helm steering shaft (See Figure 1).

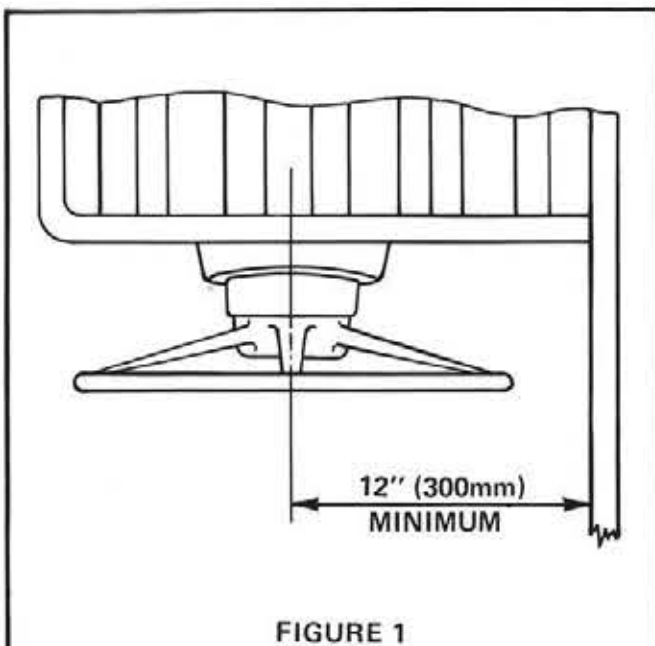


FIGURE 1

This dimension controls the minimum acceptable bend radius of 8" (200mm). If the dimension is reduced a smaller bend radius will result, which reduces steering performance and may result in premature cable failure.

2. The Helm may be installed to the Bezel for either starboard cable entry (Shown in Figure 4) or port entry.

NOTE: DIMENSIONS SHOWN IN FIGURES 1 AND 4 MUST BE MAINTAINED TO PROVIDE PROPER CLEARANCES FOR HELM.

3. Locate the approximate position for the Bezel on the console or dashboard. Using the template supplied (Figure 6) mark locations of holes.

4. Drill four holes 3/8" (10mm) diameter and one hole 3-1/2" (87mm) diameter thru the dash per template.

BEZEL ASSEMBLY

The Bezel may be assembled to provide a Helm mounting normal to the dash, shown in Figure 2 or at a 20 degree angle from normal, shown in Figure 3.

Place the Barrel Mounting Plate (Item 1) on the Dash Mounting Plate (Item 2) in the desired orientation. Assemble using 4 Hex Head Screws (Item 3). Torque screws evenly to 100 inch/pounds. **DO NOT EXCEED 135 INCH/POUNDS.**

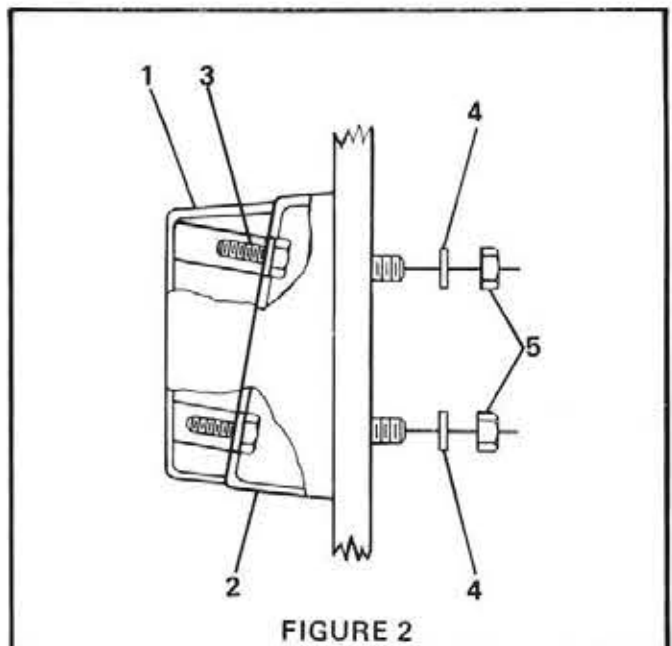
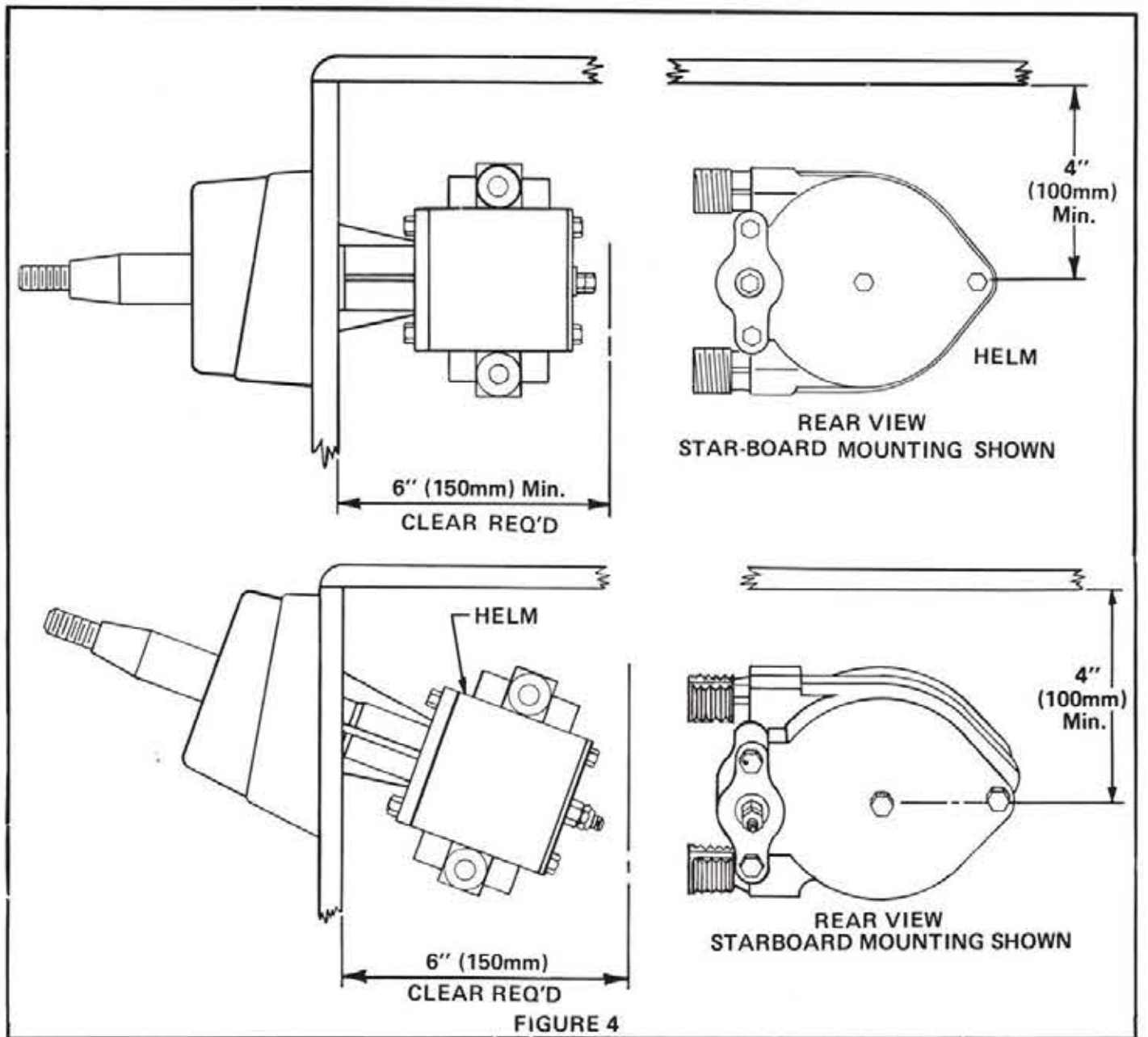
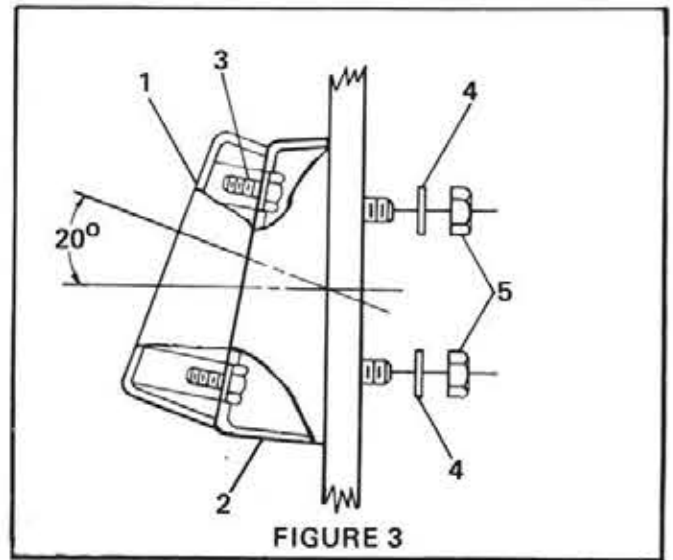
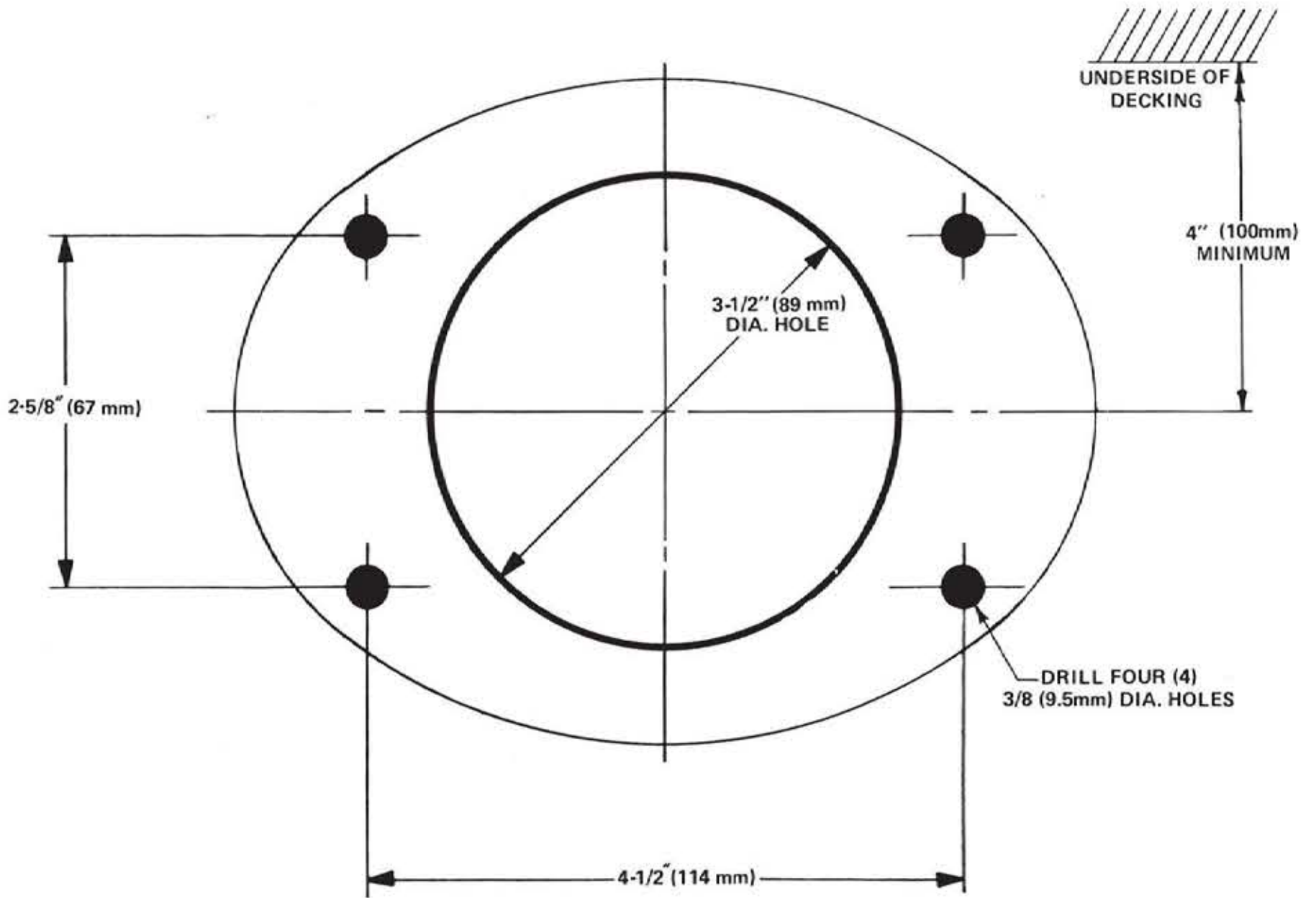


FIGURE 2

BEZEL MOUNTING

1. Place Bezel Assembly in position on dash as shown in Figure 2 or 4. Place a Flatwasher (Item 4) on each stud and thread on Locknuts (Item 5). Torque Locknuts evenly to 110 inch/pounds minimum. DO NOT EXCEED 145 INCH/POUNDS.

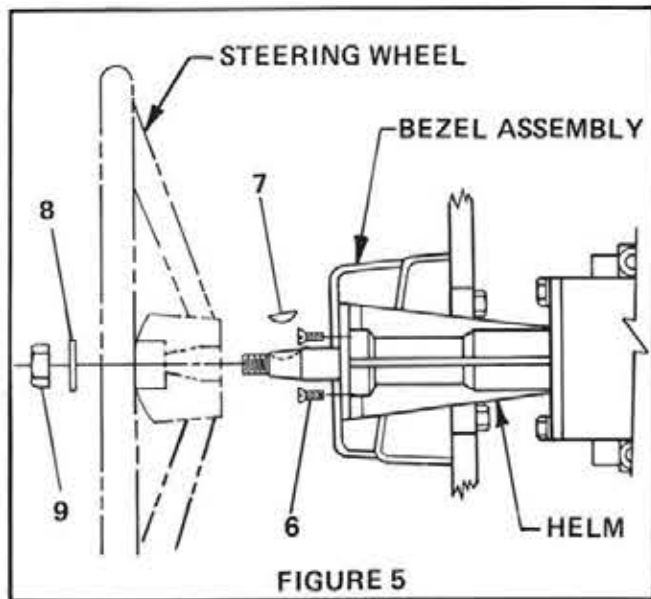




DASH MOUNT DRILL TEMPLATE
FIGURE 6

HELM MOUNTING

1. Insert Big-T Helm steering shaft thru hole in Bezel as shown in Figure 5 orienting Helm in the proper direction for cable entry. Align mounting holes in Helm with holes in Bezel.
2. Attach Helm to Bezel using four Flat Head Screws (Item 6) as shown in Figure 5. **TIGHTEN SECURELY.**



STEERING WHEEL INSTALLATION

1. Insert Woodruff Key (Item 7) into slot in Helm steering shaft. Slide Steering Wheel over shaft, aligning keyway with Woodruff Key. Add Flatwasher (Item 8) and thread on Locknut (Item 9). Torque to 240 inch/pounds minimum. **DO NOT EXCEED 320 INCH/POUNDS.**

NOTE: Check to make sure that the Steering Wheel being installed does not exceed the diameter or dish requirements specified on the helm.

The installation is now complete.

CAUTION

RE-TORQUE ALL ATTACHING BOLTS AND HARDWARE AFTER A FEW HOURS RUNNING AND AT REGULAR INTERVALS THEREAFTER. LOOSENING OR SEPARATION OF ONE OR MORE FASTENERS MAY CAUSE FAILURE OF THE STEERING SYSTEM RESULTING IN PROPERTY DAMAGE AND/OR PERSONAL INJURY.

PARTS LIST

Item	Description	Quan.
1	Barrel Mounting Plate	1
2	Dash Mounting Plate	1
3	Hex Hd. Screw 5/16-18 x 5/8"	4
4	Flatwasher 5/16" ID	4
5	Locknut 5/16-24	4
6	Flat Hd. Screw 1/4-28 x 5/8"	4
7	Woodruff Key No. 9	1
8	Flatwasher 1/2" ID	1
9	Locknut 1/2-20	1

