



Our Vision is Your Vision

2022 Marine Catalog

CONTENTS

PANEL MOUNT	
VSRT Series	Sunlight Readable Marine Touchscreen DisplaysPage 3
CD Series	LCD Commercial Displays.....Page 6
PANEL MOUNT WITH VESA MOUNT	
SRT/PHT Series	LCD Marine/Industrial Displays (SRT-Sunlight Readable; PHT-Pilot House).....Page 8
MO-EX-XX Series	Extreme Mobile Monitors.....Page 12
PANEL MOUNT WITH VESA MOUNT	
IND Series	LED Sunlight Readable Industrial DisplaysPage 13
Extreme Series	100% Sealed IP68 Waterproof Sunlight Readable DisplayPage 15
RRD-19T	River Radar Display.....Page 17
RACK DRAWER MOUNT	
MDRM-19	19" 1280x1024 LCD Multi-Display Rack Mount, Dual or Triple Display OptionslPage 19
IND-XX-RDKB-20	20" Depth, Rack Drawer with Rugged Clamshell DesignPage 6
IND-XX-RD1U-24	24" Depth, Rack Drawer with Rugged Clamshell DesignPage 19
IND-XX-RD1U-20	20" Depth, 1U KVM Rack Drawer with the Keyboard and Monitor MovingPage 19
IND-XX-RDKB-KVM-20	20" Depth, KVM Rack-Drawer with Keyboard and MonitorPage 19
IND-XX-RDKBMP-24	24" Depth, KVM Rack-Drawer with Keyboard and MonitorPage 19
RD-KB-XX	17" Depth, Rack-Drawer for Keyboard Only.....Page 19
RD-KB-KVM-XX	KVM Rack-Drawer for Keyboard Only.....Page 19
FD-MP-XX	Fold-Down Multi-position; 1U LCD Display Drawer with 17" LCD MonitorPage 20
FD-MP-20	1 U Military Drawer Mount, Multi-position Fold-Down, 19" RackPage 20
PORTABLE	
MO-R1Q	Rugged Mobile Monitors.....Page 21
MDMOWT-XXXX	Rugged Mobile Monitors with Multi-Display Options and Watertight CasePage 21
RVT-7	Sunlight Readable Rugged Tablet.....Page 22
DIGITAL CONTROLS	
SCC	SCC - Seatronx Command ControlPage 23
PHT-SRT-CTL	Remote Control Unit for PHT/SRT Monitors.....Page 25
SEA-BV7	7" Monitor Management InterfacePage 26
COMPUTERS	
MPPC Series	LCD Marine Panel PCsPage 27
SSPPC Series	Stainless Steel Panel PCs.....Page 29
MPC Series	Seatronx Marine & Industrial PCsPage 31
ANTENNAS & ROUTERS	
TRACKBALLS & KEYBOARDS	MBA-400 Series Antenna, Connect-Route and SEA Series RoutersPage 34
SURFVISON HD	Waterproof Trackballs and Waterproof KeyboardsPage 35
EXPLOSION PROOF CAMERAS	Camera and Recording SystemPage 40
Commercial Marine Cameras	Explosion Proof Compact and AF-Zoom Cameras.....Page 42
	Professional PAL/NTSC CamerasPage 44

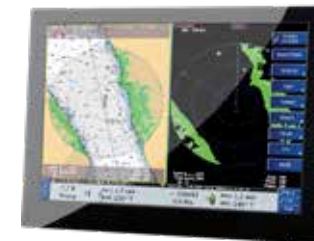


VSRT Series

The Undisputed Champion of Sunlight Readable Marine Displays

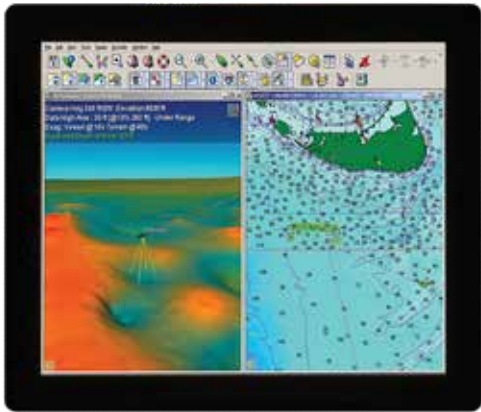
The V Series Sunlight Readable Touchscreen (VSRT) Displays are designed for the Marine industry. These rugged displays deliver crisp text, fast response and optimized viewing angles under any outdoor lighting conditions due to our bonding technology. The VSRT series is ideal for high sunlight areas such as cockpits, decks and bright pilothouses. The sleek design allows maximum screen size in the smallest spaces available. Available Screen Sizes: 15", 17", 19", 21" (wide), 24" (wide)

- *Amazing 8 Inputs*
- *Night Mode with Backlight (optional colors)*
- *Red Mode*
- *Unmatched Clarity*
- *Exceptional Viewing Angles*
- *Compatible with SCC Control Command System*



Seatronx Part Numbers	VSRT-15	VSRT-17	VSRT-19	VSRT-21W
FEATURES				
Diagonal (active area) Inch	15.0	17.0	19.0	21.5
Native Resolution (Pixels)	1024x 768	1280x1024	1280x 1024	1920x1080
Colors	16.2M	16.7M	16.7M	16.7
IPS Technology	YES	YES	YES	YES
Contrast Ratio	2000:1	1000:1	1500:1	5000:1
Sunlight Readable	1000+	1000+	1000+	1000+
Viewing Angle (left, right)	89,89	89,89	89, 89	89, 89
Viewing Angle (up, down)	89,89	89,89	89, 89	89, 89
Backlight Lifetime (Hrs)	50000+	50000+	50000+	50000+
Backlight Dimming	0 - max	0 - max	0 - max	0 - max
Inputs	2xDVID, 2xVGA, 1xDP,4xComp	2xDVID, 2xVGA, 1xDP,4xComp	2xDVID, 2xVGA, 1xDP,4xComp	2xDVID, 2xVGA, 1xDP,4xComp
Power Source	9-36V + and -	9-36V + and -	9-36V + and -	9-36V + and -
Voltage converter	9-36V (isolated)	9-36V (isolated)	9-36V (isolated)	9-36V (isolated)
Power consumption AMPS at 24vdc	2.8	3	3.5	3.5
Inlet plug dc power	Screw Terminal	Screw Terminal	Screw Terminal	Screw Terminal
Dimensions front (w x h x d) mm (inches)	365.02 x 287.21 x 76.20mm (14.371 x 11.328 x 3)	399.78 x 331.91 x76.20mm (15.70 x 13.039 x 3)	437.35 x 362.10 x 76.20mm (17.219 x 14.256 x 3)	532.92 x 328.92 x 76.20mm (20.981 x 12.950 x 3)
Cutout Dimensions (w x h x d) mm (inches)	350.37 x 274.61 x 76mm (13.794 x 10.81 x 2.992)	384.24 x 318.69 x 76.20mm (15.127x 12.547 x 3)	430.04 x 356.22 x 76.20mm (16.931 x 14.024 x 3)	518.39 x 315.03 x 76.20mm (20.409 x 12.403 x 3)
Sealing front	IP65	IP65	IP65	IP65
Mounting	Panel Mount	Panel Mount	Panel Mount	Panel Mount
Operating temperature (°C)	-20 to +70	-10 to 70	-10 to 70	0 to +60
Storage temperature (°C)	-30 to 80	-20 to 80	-20 to 80	-20 to 70
Parameter adjustment	Remote Keypad	Remote Keypad	Remote Keypad	Remote Keypad
Power on/off	Remote Keypad	Remote Keypad	Remote Keypad	Remote Keypad
Projected Capacitive touch	YES	YES	YES	YES
Optical bonding	YES	YES	YES	YES
Remote control VIA RS232 or IP	YES	YES	YES	YES

Seatronx V Series Sunlight Readable Marine Displays	
Part Number:	Description :
VSRT-15	15" IPS 1024x768 Sunlight readable touch screen display, 9-36vdc, 2 DVID, 1 DP, , 1 VGA, 4 Composite, PIP, HDCPCompliant, wide dimming range and RS232/Ethernet Communications
VSRT-17	17" IPS 1280x1024 Sunlight readable touch screen display, 9-36vdc, 2 DVID, 1 DP, , 1 VGA, 4 Composite, PIP, HDCPCompliant ,wide dimming range and RS232/Ethernet Communications
VSRT-19	19" IPS 1280x1024 Sunlight readable touch screen display, 9-36vdc, 2 DVID, 1 DP, , 1 VGA, 4 Composite, PIP, HDCPCompliant, wide dimming range and RS232/Ethernet Communications
VSRT-21W	21.5" IPS 1920x1080 Sunlight readable touch screen display, 9-36vdc, 2 DVID, 1 DP, , 1 VGA, 4 Composite, PIP, HDCPCompliant, wide dimming range and RS232/Ethernet Communications



FRONT VIEW



REAR VIEW



KEYPAD INCLUDED

Optional Digital Controls Available - SCC Series and SEA-BV7. See details on the following pages.

CD Series

LCD Commercial Displays

CD Series

Displays Designed for Commercial Industries.



- 19" (1280x1040), 24" (1920x1080) and 26" (1920x1200) Commercial Displays With Projective Capacitive Multi-Touch Screen
- Color Calibrated For Ecdis Compliance (Optional)
- Capacitive Touch Keys For Quick Function Access and Display Control (Support Ecdis Day, Dusk, and Night Mode Switching)
- Meets The Requirements Of Industrial Marine Standards, Including IEC60945 4th Edition, DNVGL-CG-0339, IACS E10

Seatronx Commercial Displays



PANEL MOUNT

SPECIFICATIONS:

Marine ECDIS Displays	CD-19T	CD-24T	CD-26T
Diagonal (active area) Inch	19	24	26
Native Resolution (Pixels)	1280 x1024	1920 x 1080	1920 x 1200
Colors	16.7M	16.7M	16.7M
Contrast Ratio	1200:1	5000:1	1500:1
Brightness	350	350	350
Viewing Angle (left, right)	89, 89	89, 89	89, 89
Viewing Angle (up, down)	89, 89	89, 89	89, 89
Backlight Dimming	-0 (3 Stage ECDIS Option)	-0 (3 Stage ECDIS Option)	-0 (3 Stage ECDIS Option)
Inputs	1 x VGA, 1 x DVD-D, 1 x HDMI 2.0, 1 x HDMI 1.4, 1 x Display Port 1.2	1 x VGA, 1 x DVD-D, 1 x HDMI 2.0, 1 x HDMI 1.4, 1 x Display Port 1.2	1 x VGA, 1 x DVD-D, 1 x HDMI 2.0, 1 x HDMI 1.4, 1 x Display Port 1.2
Remote Control	RS232	RS232	RS232
USB For Touch Screen	YES	YES	YES
Speaker	2x 2W Speaker	2x 2W Speaker	2x 2W Speaker
Buzzer	75 dB~80 dB, 230 Hz, 1m	76 dB~80 dB, 230 Hz, 1m	77 dB~80 dB, 230 Hz, 1m
Power	9-36VDC Isolated power supply 60W (Max)	9-36VDC Isolated power supply 70W (Max)	9-36VDC Isolated power supply 80W (Max)
Power on/off dimming control	Front Bezel	Front Bezel	Front Bezel
Projected Capacitive touch	YES	YES	YES
ECDIS Color Calibration	Optional	Optional	Optional
Mounting	Panel Mount , Vesa Mount	Panel Mount , Vesa Mount	Panel Mount , Vesa Mount
Dimensions	429mm X 392mm X 72.8mm 16.889 X 15.433 X 2.866	595mm X 385mm X 63.8mm 23.43 X 15.16 X 2.51	621mm X 432.4mm X 85.5 24.44 X 17.02 X 3.66
Cutout	408mm X 359mm 16.03 X 14.13	572mm x 363mm 22.51 X 14.29	598mm X 408mm 23.54 X 16.06
IP Rating	IP65 Front	IP65 Front	IP65 Front
IEC60945, DNV, IACS E10, CE,FCC	YES	YES	YES
Operating Temperature	-15 to 55 c	-15 to 55 c	-15 to 55 c

ORDERING INFORMATION:

Commercial Display ECDIS Touch Screen Displays:	
Part Number:	Description :
CD-19T	19" 1280x1024 Commercial touch screen display, 1 each VGA,DVID,HDMI 1.4,HDMI 2.1, Display Port 1.2, 9-36vdc, wide dimming range, three stage ECDIS dimming Night,Dusk,Day
CD-24T	24" 1920x1080 Commercial touch screen display, 1 each VGA,DVID,HDMI 1.4,HDMI 2.1, Display Port 1.2, 9-36vdc, wide dimming range
CD-26T	26" 1920x1200 Commercial touch screen display, 1 each VGA,DVID,HDMI 1.4,HDMI 2.1, Display Port 1.2, 9-36vdc, wide dimming range
ECDIS Option*	ECDIS Color Calibration

*For ECDIS option Add -ECDIS at the end of the above part numbers (sample CD-19T-ECDIS)

SRT/PHT Series

LCD Marine/Industrial Displays

Sunlight Readable Touchscreen (SRT) & Pilot House Touchscreen (PHT)
Displays Designed for the Industrial and Marine Industries.

PANEL MOUNT W/ VESA



10" Display
SRT-10/PHT-10

12" Display
SRT-12/PHT-12

15" Display
SRT-15/PHT-15

15" Wide
SRT-15W/PHT-15W

17" Display
SRT-17/PHT-17

18.5" Wide
SRT-185W/PHT-185W

19" Display
SRT-19/PHT-19

21" Wide
SRT-21W/PHT-21W

24" Display
SRT-24/PHT-24

24" Wide
SRT-24W/PHT-24W

- Cost Effective Glass Bridge Displays
- Up to 1500 Nits Sunlight Readable
- Wide Dimming Range
- IEC60945 Certified
- NEMA 4, IP65 Sealed Front Panel
- Front Brightness Controls

- HDMI, DVID, VGA & Composite Video Input
- Red Mode
- Standard PCAP Touch Screen
- HDCP Compliant
- Low Power LED Backlighting

Standard Displays



PANEL MOUNT W/ VESA

Seatronx Part Numbers:	SRT-10 &PHT-10	SRT-12 & PHT-12	SRT-15 & PHT-15	SRT-17 &PHT-17	SRT-19 &PHT-19	SRT-24 & PHT-24
FEATURES						
Diagonal (active area) Inch	10.4	12.1	15.0	17.0	19.0	24.1
Native Resolution (Pixels)	1024 x 768	1024x768	1024x 768	1280x1024	1280x 1024	1920x 1200
Colors	16.2M	16.2M	16.2M	16.7M	16.7M	16.7M
Contrast Ratio	1200	700	700	1000	1000	1000
Brightness Sunlight Readable (SRT)	1500	1500	1800	1500	1500	1000
Brightness Pilot House (PHT)	500	700	700	350	300	350
Viewing Angle (left, right)	89, 89	80,80	80, 80	85,85	89, 89	89, 89
Viewing Angle (up, down)	89, 89	80,80	60, 80	80,80	89, 89	89, 89
Backlight Lifetime (Hrs)	50000	50000	50000	50000	50000	50000
Backlight Dimming	0 - max	0 - max	0 - max	0 - max	0 - max	0 - max
Input terminal x1 HDCP HDMI	HDMI,DVI,VGA, Comp	HDMI,DVI,VGA, Comp	HDMI,DVI,VGA, Comp	HDMI,DVI,VGA, Comp	HDMI,DVI,VGA, Comp	HDMI,DVI,VGA, Comp
Power Source	9-34V + and -	9-34V + and -	9-34V + and -	9-34V + and -	9-34V + and -	9-34V + and -
Voltage Converter	9-34V (isolated)	9-34V (isolated)	9-34V (isolated)	9-34V (isolated)	9-34V (isolated)	9-34V (isolated)
Power Consumption (AMPS @ 24VDC)	SRT 2.5 / PHT 1.5	SRT 2.5 / PHT 1.5	SRT 2.8 / PHT 1.5	SRT 3 / PHT 1.5	SRT 3.5 / PHT 1.5	SRT 3.5 / PHT 1.8
Inlet Plug DC Power	Screw Terminal	Screw Terminal	Screw Terminal	Screw Terminal	Screw Terminal	Screw Terminal
Dimensions Front (w x h x d mm)	262.6 x 227.6 x 58mm (10.34 x 8.960 x 2.28)	301.8 x 257.3 x 58mm (11.88 x 10.13 x2.28)	363.1 x 305.1 x 58mm (14.295 x 12.02 x 2.28)	396.9 x 342 x 58mm (15.62 x 13.46 x 2.28)	432.6 x 377.2 x 58mm (17.03 x 14.85 x 2.28)	587 x 404.2 x 58mm (23.11 x 15.91 x 2.28)
Cutout Dimensions (w x h x d mm)	244.4 x 209.4 x 61mm (9.623 x 8.224 x 2.40)	283.6 x 239.1 x 61mm (11.16 x 9.43 x 2.40)	345.1 x 287.1 x 61mm (13.58 x 11.30 x 2.40)	378.9 x 324 x 61mm (14.92 x 12.75 x 2.40)	414.6 x 359.2 x 61mm (16.32 x 14.14 x 2.40)	569 x 386.2 x 61mm (22.41 x 15.20 x 2.40)
Sealing Front	ip68 with potentiometer	ip68 with potentiometer	ip68 with potentiometer	ip68 with potentiometer	ip68 with potentiometer	ip68 with potentiometer
Mounting	panel mount/Vesa	panel mount/Vesa	panel mount/Vesa	panel mount/Vesa	panel mount/Vesa	panel mount/Vesa
Operating Temperature (°C)	-30 to 70	-30 to 85	-30 to 85	-30 to 85	0 to 70	0 to 50
Storage Temperature (°C)	-30 to 80	-30 to 80	-30 to 85	-30 to 85	-20 to 70	-20 to 60
Parameter Adjustment	front knob and osd at backside	front knob and osd at back-side	front knob and osd at backside	front knob and osd at backside	front knob and osd at backside	front knob and osd at backside
Power On/Off	front knob and osd at backside	front knob and osd at back-side	front knob and osd at backside	front knob and osd at backside	front knob and osd at backside	front knob and osd at backside
Projected Capacitive Touch	YES	YES	YES	YES	YES	YES
Optical Bonding	YES	YES	YES	YES	YES	YES
Remote Control	Optional	Optional	Optional	Optional	Optional	Optional

Standard USB Touchscreen Connection; RS-232 Touchscreen Connection Available Add -232 To Part Number (Example: SRT-19-232)
Available With External Power Dimming Control; Consult Factor For Details

Wide Screen Displays



PANEL MOUNT W/ VESA

Seatronx Part Numbers:	SRT-15W & PHT-15W	SRT-185W & PHT-185W	SRT-21W & PHT-21W	SRT-24W-1080 & PHT-24W-1080	SRT-27W-1080 & PHT-27W-1080
FEATURES					
Diagonal (active area) Inch	15.6	18.5	21.5	24.0	27.0
Native Resolution (Pixels)	1920x1080	1920 x 1080	1920 x1080	1920 x 1080	1900 x 1080
Colors	16.2M	16.7M	16.7	16.7M	16.7M
Contrast Ratio	1500	1000	5000	1000	1000
Brightness Sunlight Readable (SRT)	1500	1500	1000	1000	1000
Brightness Pilot House (PHT)	400	300	300	350	350
Viewing Angle (left, right)	89,89	89, 89	89, 89	89, 89	89, 89
Viewing Angle (up, down)	89,89	89, 89	89, 89	89, 89	89, 89
Backlight Lifetime (Hrs)	50000	50000	50001	50000	50000
Backlight Dimming	0 - max	0 - max	0 - max	0 - max	0 - max
Input terminal x1 HDCP HDMI	HDMI,DVI,VGA, Comp	HDMI,DVI,VGA, Comp	HDMI,DVI,VGA, Comp	HDMI,DVI,VGA, Comp	HDMI,DVI,VGA, Comp
Power Source	9-34V + and -	9-34V + and -	9-34V + and -	9-34V + and -	9-34V + and -
Voltage Converter	9-34V (isolated)	9-34V (isolated)	9-34V (isolated)	9-34V (isolated)	9-34V (isolated)
Power Consumption (AMPS @ 24VDC)	SRT 3.2 / PHT 2	SRT 3.5 / PHT 1.5	SRT 3.5 / PHT 1.8	SRT 3.5 / PHT 1.8	SRT 3.5 / PHT 1.8
Inlet Plug DC Power	Screw Terminal	Screw Terminal	Screw Terminal	Screw Terminal	Screw Terminal
Dimensions Front (w x h x d mm)	403.8 x 272.5 x 58 mm (15.89 x 10.72 x 2.28)	466.2 x 307.4 x 61mm (18.35 x 12.1 x 2.40)	538 x 345.4 x 58mm (22.95 x 13.59 x 2.28)	598.6 x 382.8 x 61mm (23.57 x 15.07 x 2.40)	660.6 x 418.0 x 61mm (26.01 x 16.46 x 2.40)
Cutout Dimensions (w x h x d mm)	385.8 x 254.5 x 61 mm (15.18 x 10.01 x 2.40)	448.2 x 289.4 x 61mm (17.65 x 11.39 x 2.40)	520 x 327.4 x 61mm (20.47 x 12.88 x 2.40)	580.6 x 364.8 x 61mm (22.86 x 14.36 x 2.40)	642.6 x 400 x 61mm (25.3 x 15.75 x 2.40)
Sealing Front	ip68 with potentiometer	ip68 with potentiometer	ip68 with potentiometer	ip68 with potentiometer	ip68 with potentiometer
Mounting	panel mount/Vesa	panel mount/Vesa	panel mount/Vesa	panel mount/Vesa	panel mount/Vesa
Operating Temperature (°C)	-20 to 75	0 to 70	to 50	0 to 50	0 to 50
Storage Temperature (°C)	-20 to 80	-20 to 70	-20 to 60	-20 to 60	-20 to 60
Parameter Adjustment	front knob and osd at backside	front knob and osd at backside	front knob and osd at backside	front knob and osd at backside	front knob and osd at backside
Power On/Off	front knob and osd at backside	front knob and osd at backside	front knob and osd at backside	front knob and osd at backside	front knob and osd at backside
Projected Capacitive Touch	YES	YES	YES	YES	YES
Optical Bonding	YES	YES	YES	YES	YES
Remote Control	Optional	Optional	Optional	Optional	Optional

SRT Series Sunlight Readable Touch Screen Displays	
Part #:	Description :
SRT-10	10" 1024x768 Sunlight readable touch screen display, 9-36vdc, 1 HDMI, 1 DVDI, 1 VGA, 1 Composite, wide dimming range
SRT-12	12" 1024x768 Sunlight readable touch screen display, 9-36vdc, 1 HDMI, 1 DVDI, 1 VGA, 1 Composite, wide dimming range
SRT-15	15" 1024x768 Sunlight readable touch screen display, 9-36vdc, 1 HDMI, 1 DVDI, 1 VGA, 1 Composite, wide dimming range
SRT-17	17" 1280x1024 Sunlight readable touch screen display, 9-36vdc, 1 HDMI, 1 DVDI, 1 VGA, 1 Composite, wide dimming range
SRT-19	19" 1280x1024 Sunlight readable touch screen display, 9-36vdc, 1 HDMI, 1 DVDI, 1 VGA, 1 Composite, wide dimming range
SRT-24	24" 1920x1200 Sunlight readable touch screen display, 9-36vdc, 1 HDMI, 1 DVDI, 1 VGA, 1 Composite, wide dimming range
Wide Screen	
SRT-15W	15" Wide Screen 1920x1080 Sunlight readable touch screen display, 9-36vdc, 1 HDMI, 1 DVDI, 1 VGA, 1 Composite, wide dimming range
SRT-185W	18.5" Wide Screen 1920x1200 Sunlight readable touch screen display, 9-36vdc, 1 HDMI, 1 DVDI, 1 VGA, 1 Composite, wide dimming range
SRT-21W	21" Wide Screen 1920x1080 Sunlight readable touch screen display, 9-36vdc, 1 HDMI, 1 DVDI, 1 VGA, 1 Composite, wide dimming range
SRT-24W-1080	24" Wide Screen 1920x1080 Sunlight readable touch screen display, 9-36vdc, 1 HDMI, 1 DVDI, 1 VGA, 1 Composite, wide dimming range
SRT-27	27" Wide Screen 1920x1080 Sunlight readable touch screen AG glass only display, 9-36vdc, 1 HDMI, 1 DVDI, 1 VGA, 1 Composite, wide dimming range
PHT Series Pilot House Touch Screen Displays	
Part #:	Description :
PHT-12	12" 1024x768 Pilothouse touch screen display, 9-36vdc, 1 HDMI, 1 DVDI, 1 VGA, 1 Composite, wide dimming range
PHT-15	15" 1024x768 Pilothouse touch screen display, 9-36vdc, 1 HDMI, 1 DVDI, 1 VGA, 1 Composite, wide dimming range
PHT-17	17" 1280x1024 Pilothouse touch screen display, 9-36vdc, 1 HDMI, 1 DVDI, 1 VGA, 1 Composite, wide dimming range
PHT-19	19" 1280x1024 Pilothouse touch screen display, 9-36vdc, 1 HDMI, 1 DVDI, 1 VGA, 1 Composite, wide dimming range
PHT-24	24" 1920x1200 Pilothouse touch screen display, 9-36vdc, 1 HDMI, 1 DVDI, 1 VGA, 1 Composite, wide dimming range
Wide Screen	
PHT-15W	15" Wide Screen 1920x1080 Pilothouse touch screen display, 9-36vdc, 1 HDMI, 1 DVDI, 1 VGA, 1 Composite, wide dimming range
PHT-185W	18.5" Wide Screen 1920x1200 Pilothouse touch screen display, 9-36vdc, 1 HDMI, 1 DVDI, 1 VGA, 1 Composite, wide dimming range
PHT-21W	21" 1920x1080 Pilothouse touch screen display, 9-36vdc, 1 HDMI, 1 DVDI, 1 VGA, 1 Composite, wide dimming range
PHT-24W-1080	24" Wide Screen 1920x1080 Pilothouse touch screen display, 9-36vdc, 1 HDMI, 1 DVDI, 1 VGA, 1 Composite, wide dimming range
PHT-27W	27" Wide Screen 1920x1080 Pilothouse touch screen AG glass only display, 9-36vdc, 1 HDMI, 1 DVDI, 1 VGA, 1 Composite, wide dimming range
Low Cost AC Powered PH Series Pilot House NON TOUCH Displays	
Part #:	Description :
PH-15-AC	15" 1024x768 Pilothouse display, AC 110 Power Supply Included , 1 HDMI, 1 DVDI, 1 VGA, 1 Composite, wide dimming range
PH-17-AC	17" 1280x1024 Pilothouse display, 12VDC AC 110 Power Supply Included , 1 HDMI, 1 DVDI, 1 VGA, 1 Composite, wide dimming range
PH-19-AC	19" 1280x1024 Pilothouse display, AC110 Power Supply Included , 1 HDMI, 1 DVDI, 1 VGA, 1 Composite, wide dimming range
PH-24-AC	24" 1920x1200 Pilothouse display, AC 110 Power Supply Included , 1 HDMI, 1 DVDI, 1 VGA, 1 Composite, wide dimming range
Accessories	
SRT/PHT Universal Control For Up to 12 SRT/PHT Displays Power, Dimming and Input Selection	

MO-EX-XX Series

Extreme Mobile Monitors - Sizes: 12.1", 17.3"

PANEL MOUNT W/ VESA

MO-EX-XX Series

Broadcast, Film, IT, Military, and Mobile Command, and now...under-water. The MO-EX-XX portable display solution adds a new dimension to our ever-expanding rugged monitor line. The MO-EX-XX is professionally sealed and rated IP68, rendering it submersible to a depth of 5 feet. Power and connective cables run through an umbilical line, making it great for short-term, shallow depth submersion and high-splash environments. Some example uses include theme parks, on-set or location filming, and news productions. The MO-EX-XX has been, and continues to be employed in a variety of high-profile settings and environments.



MO-EX-XX Series Options and Specifications

MO-EX-XX Series Options and Specifications	
Video Controllers	
V257xSDI (.02) Broadcast Premier	Max Resolution: 1920 x 1200 • Input Options Available: HDMI, 3G SDI
V258xSDI (.03) Broadcast Premier Plus	Max Resolution: 1920 x 1200 • Input Options Available: HDMI, 3G SDI
LCD Modules	
121HB FHD 1280x800 (Max Res)	<ul style="list-style-type: none"> • 12.1" WIDE LED BACKLIT LCD W/ ANTI-GLARE • VIEWING ANGLES: 80L/80R/80U/60D • CONTRAST RATIO: 700:1 • BRIGHTNESS: 1500 NITS • RESPONSE TIME: 4MS • SURFACE FINISH: ANTI GLARE WITH HARD COATING • SURFACE FINISH: ANTIGLARE, HARD COATING (3H) • COLOR: 262K/16.7M (6 BIT + HI-FRC) • TYPE: AFFS
173HB FHD 1920x1200 (Max Res)	<ul style="list-style-type: none"> • 17.3" WIDE LED BACKLIT LCD W/ ANTI-GLARE • VIEWING ANGLES: 80L/80R/60U/60D • CONTRAST RATIO: 600:1 • BRIGHTNESS: 1000+ NITS • RESPONSE TIME: 37TR/3TD • SURFACE FINISH: ANTI GLARE WITH ACRYLIC LENS • COLOR: 6-BIT + HI-FRC • TYPE: A-SI
Options	<ul style="list-style-type: none"> • OPTICALLY BONDED LENS • YOKE MOUNT • PCAP TOUCH
Specifications	<ul style="list-style-type: none"> • DIMENSIONS: 12" X 9" X 1.2" • WEIGHT: 6 LBS • POWER CONSUMPTION: 30 WATTS • SHIPPING WEIGHT: 16 LBS • SHIPPING DIMENSIONS 18" X 13.5" X 7"

IND Series

Rugged LED Sunlight Readable Industrial Displays

IND Series

Displays Designed for Industrial Applications.



PANEL MOUNT W/ BRACKET

LED- Sunlight Readable Industrial/Marine LCD Monitors These products feature the latest in LCD technology with 1,500nit LED backlights rated at 100,000 hours life. They feature optically bonded anti -reflective glass, perfect 1000:1 dimming, DVI, VGA, HDMI and Mil Spec. OSD controls.

- **IND-19: 19" TFT LCD; 1,280 X 1,024 Resolution(SXGA)**
- **IND-23: 23" TFT LCD; 1,920 X 1,080 Resolution(FHD)**
- **AC or DC Powered (10 to 38VDC; AC/DC Brick Power Supply Included)**
- **Heavy Duty Mounting Bracket Included**



PANEL MOUNT W/ BRACKET

SPECIFICATIONS:

IND Series	IND-19	IND-24W
LCD Type	TFT Active Matrix LCD (16.7 Million colors)	TFT Active Matrix LCD (2.07 Million colors)
Display Size	19.0"	24.07"
Resolution	1,280 x 1,024(SXGA)	1,920 x 1,200(WUXGA)
Contrast Ratio	1,000:1	1,000:1
Brightness	LED Backlight Type- 1,500 nit(min.)	LED Backlight Type- 900 nit(min.)
Panel Surface	Anti-Glare Coating with Tempered Glass	Anti-Glare Coating with Tempered Glass
Inputs	DVI, VGA, HDMI(With PIP/POP)	DVI, VGA, HDMI(With PIP/POP)
Mounting Options	VESA / Flush/U-Bracket mounted	VESA / Flush/U-Bracket mounted
View Angle	170(H) 170 (V)	178(H) 1708(V)
Response Time	3m/sec	14m/sec
Light Source	Light Emitting Diodes	Light Emitting Diodes
Input Voltage	10 to 38VDC Power Input, AC/DC brick power supply included	10 to 38VDC Power Input, AC/DC brick power supply included
Power Consumption	34W	60W
Dimensions	17.51"(W)x14.96"(H)x2.23"(D), 445(W)x380(H)x56.8(D)mm	23.4"(W)x16.61"(H)x2.56"(D), 595(W)x422(H)x65(D)mm
Operating Range	-10C ~ 60C	-0C ~ 50C
Cases Color	Black ,Dark Gray	Black ,Dark Gray
IP Rating	Front Side:IP65, Rear Side:IP32	Front Side:IP65, Rear Side:IP32
Warranty	2 yrs	2 yrs
Dimming Range	1000:1 (dimming control to dark to full bright)	1000:1 (dimming control to dark to full bright)
Weight	13.67 LBS(6.2Kg)	22 LBS(10Kg)

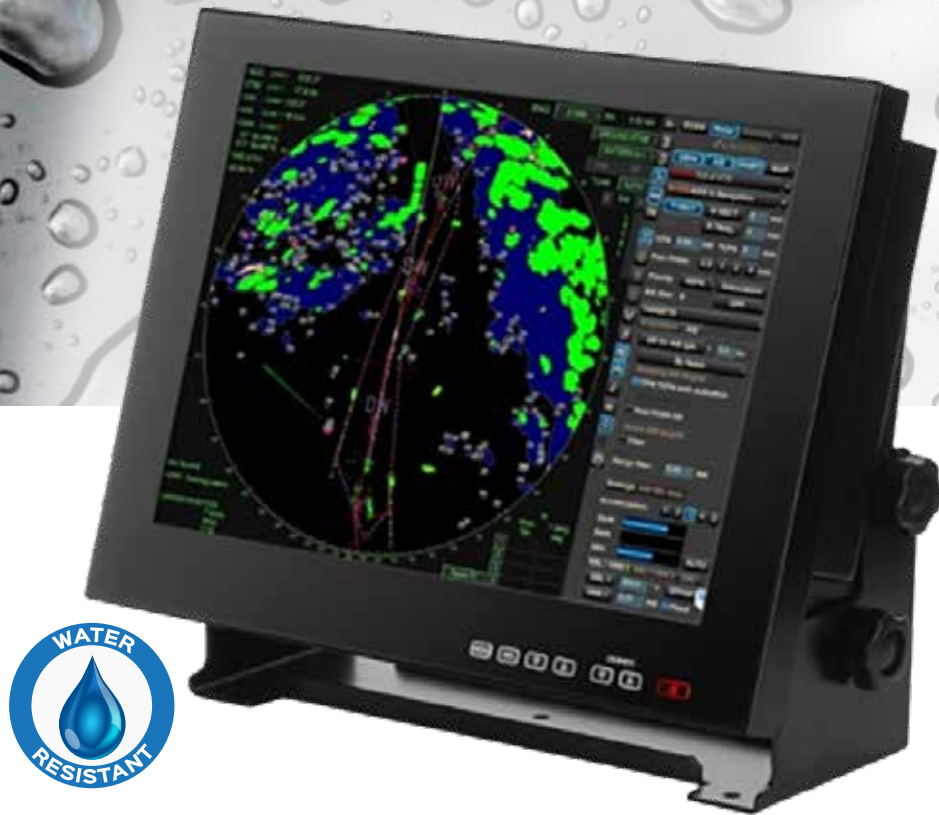
ORDERING INFORMATION:

Industrial Displays	
Part Number:	Description :
IND-19	19.0" TFT LCD • 1,280 X 1,024 Resolution(SXGA) • 10 to 38VDC Power Input, AC/DC Brick Power Supply Included
IND-24W	24.07" TFT LCD • 1,920 X 1,200 Resolution(WUXGA) • 10 to 38VDC Power Input, AC/DC Brick Power Supply Included

EXTREAM SERIES

100% SEALED IP68 WATER-PROOF
SUNLIGHT READABLE DISPLAYS

PANEL MOUNT W/ BRACKET



SPECIFICATIONS:

PANEL MOUNT W/ BRACKET

LCD Size (Model Number)	Resolution	cd/m2	View Angle	Contrast Ratio	Power Consumption
8.4" (XT-8)	SVGA (800×600)	1,000 cd/m2	160° (H) x 160° (V)	900:1	18 Watts
10.4" (XT-10)	XGA (1,024×768)	1,000 cd/m2	160° (H) x 130° (V)	700:1	20 Watts
12.1" (XT-12)	XGA (1,024×768)	1,000 cd/m2	160° (H) x 160° (V)	1,200:1	22 Watts
15.0" (XT-15)	XGA (1,024×768)	1,000 cd/m2	160° (H) x 160° (V)	800:1	26 Watts
17.0" (XT-17)	SXGA(1,280×1,024)	1,000 cd/m2	160° (H) x 160° (V)	1,000:1	30Watts
19.0" (XT-19)	SXGA(1,280×1,024)	1,000 cd/m2	170° (H) x 160° (V)	1,000:1	34Watts

Technical Specifications	
Display	8-bit, 16.7 Million colors
Dimming Ratio	1,000:1
Signal Input	RGB(HD15), DVI, HDMI (Optional: Display portx1)
Power Input	DC10-38V(DC12V,24V,28V nominal usage)
Housing	Machined Aluminum alloy, Black powder coated
Mounting	VESA, Flush, Panel, U- Bracket mount(optional)
DC Power Input	DC10-38V(DC12V,24V,28Vnominal usage) Harsh duty variable power supply
Power Conditioning	Protected against Internal short circuit, load dump, over voltage, reverse polarity
Environmental Specifications	
IP Rating	IP68 (NEMA 6 Submersible)
Operating Temperature	-10°C to 60°C (-14°F to 140°F)
Storage Temperature	-30°C to 80°C (-40°F to 176°F)
Humidity	0-100%
Shock	1.5G RMS
Vibration	5G
Altitude	10,000 ft.
EMI/EMC	Meet to UL, FCC standard level(Not certificated)
Electronics Circuit	RoHS Compliant

ORDERING INFORMATION:

Industrial Displays	
Part Number:	Description :
XT-8	8.4" SVGA (800×600) Sunlight readable display
XT-10	10.4" XGA (1,024×768) Sunlight readable display
XT-12	12.1" XGA (1,024×768) Sunlight readable display
XT-15	15.0" XGA (1,024×768) Sunlight readable display
XT-17	17.0" SXGA(1,280×1,024) Sunlight readable display
XT-19	19.0" SXGA(1,280×1,024) Sunlight readable display
OPTIONS	
-TUSB (8" to 12") (15" to 19")	Add -TUSB to part number for USB Touchscreen
-T232 (8" to 12") (15" to 19")	Add - T232 to part number for RS-232 Touchscreen

EXAMPLE: XT-8-TUSB = 8.4" Sunlight readable display with USB Touchscreen



RRD-19T River Radar Display

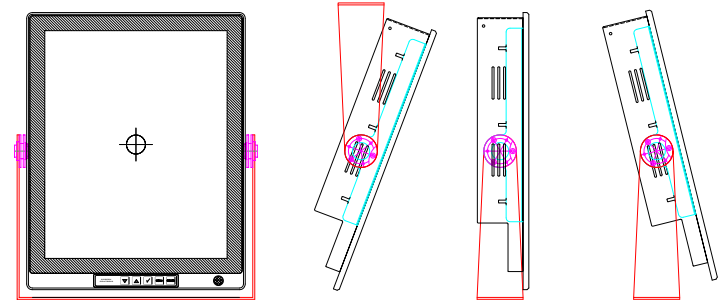
19" Vertical Marine Display

The RRD-19T is a 19" display with portrait orientation for River Radar systems. This portrait-oriented River Radar Display is simple to install in panel mount installations or using the optional UB mounting bracket. The 19" (vertical) LED TFT screen produces a clear and contrast-strong image both day and night, and offers wide range dimming to accommodate any lighting condition. The RRD-19T River Radar Display is incredibly easy to install and use.

SPECIFICATIONS:

PANEL MOUNT W/ BRACKET

Seatronx Part Number	RRD-19T Series
RRD-19T	19" Touchscreen, Panel Mount
RRD-19T-UB	Heavy Duty U-Bracket
Diagonal (active area) Inch	19.0
Native Resolution (Pixels)	1024 x 1280
Colors	16.7M
IPS Technology	YES
Contrast Ratio	1500:1
Brightness	700+
Viewing Angle (left, right)	89, 89
Viewing Angle (up, down)	89, 89
Backlight Lifetime (Hrs)	50000+
Backlight Dimming	0 - max
Inputs	2xDVID, 2xVGA, 1xDP,4xComp
Power Source	9-36V + and -
Voltage converter	9-36V (isolated)
Power consumption AMPS at 24vdc	3.5
Inlet plug dc power	Screw Terminal
Dimensions front (w x h x d) mm (inches)	362.10 x 437.35 x 76.20mm (14.256 x 17.219 x 3)
Cutout Dimensions (w x h x d) mm (inches)	356.22 x 430.04 x 76.20mm (14.024 x 16.931 x 3)
Sealing front	IP65
Mounting	Panel Mount or Optional U-Bracket
Operating temperature (°C)	-10 to 70
Storage temperature (°C)	-20 to 80
Parameter adjustment	Remote Keypad
Power on/off	Remote Keypad
Projected Capacitive touch	YES
Optical bonding	YES
Remote control VIA RS232 or IP	YES
Red Mode	YES



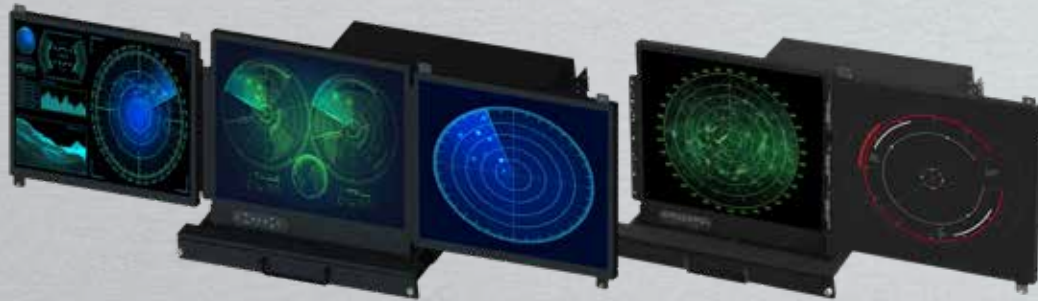
FRONT VIEW



REAR I/O PORTS VIEW

Rack Drawers

Rack Drawer Mount With Displays & Keyboards



MDRM-19



IND-xx-RDKB-20



IND-xx-RD1U-24



IND-xx-RD1U-20



IND-xx-RDKB-KVM-20



IND-xx-RDKBMP-24



RD-KB-xx



RD-KB-KVM-xx

RACK DRAWER MOUNT

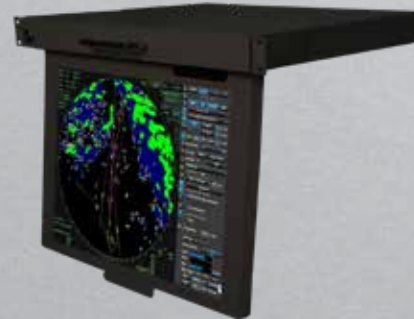
Seatronx Part Number	Description
MDRM-19	19" 1280x1024 LCD Multi-Display Rack Mount, Dual or Triple Display Options
IND-xx-RDKB-20	20" Depth, Rack Drawer with Rugged Clamshell Design
IND-xx-RD1U-24	24" Depth, Rack Drawer with Rugged Clamshell Design
IND-xx-RD1U-20	20" Depth, 1U KVM Rack Drawer with the Keyboard and Monitor Moving Independent of Each Other
IND-xx-RDKB-KVM-20	20" Depth, KVM Rack-Drawer with Keyboard and Monitor
IND-xx-RDKBMP-24	24" Depth, KVM Rack-Drawer with Keyboard and Monitor
RD-KB-xx	17" Depth, Rack-Drawer for Keyboard Only
RD-KB-KVM-xx	KVM Rack-Drawer for Keyboard Only

Fold Down Rack Drawers

Rack Drawer With Fold Down Display



FD-MP-20-xx



FD-MP-xx

Seatronx Part Number	Description
FD-MP-20-xx	1 U Military Drawer Mount, Multi-position Fold-Down, 19" Rack
FD-MP-xx	Fold-Down Multi-position; 1U LCD Display Drawer with 17" LCD Monitor

Rugged Mobile Monitors

MO-R1Q-XX Series

Sizes: 10.1", 12.1", 15.6", 17.3", 21.5"



MDMOWT-XXXX Series

Multi-Display, Mobile, Watertight Case, Custom



Seatronx Part Number	Description
MO-R1Q-XX Series	Rugged All Aluminum Construction • Entry V33x Quantum Controller Card • Customizable Modular Design • Kickstand Included • Light Weight • Optional Battery Cradle
MDMOWT-XXXX Series	Customizable Modular Design • Countless Component Options • Up to Three LED Backlit Displays • Rugged, Splash-Proof Hard Case Light Weight • Built-in Luggage-Style Wheels and Extendable Handle • Compatible with Any Controller Card

Sunlight Readable Rugged Tablet

RVT-7

Rugged Vehicle 7" Tablet

PORTABLE



FEATURES

- 7" Sunlight Readable
- Dust Resistant
- Water Resistant
- Vehicle Mount Included
- Download All Your Favorite Android Apps, Maps & Software
- A Technicians Digital Multi-tool With SAEJ1939 and OBD-II Version
- Ideal For All Outdoor Applications Including, Ground Mobile

RVT-7 Specifications

Mobile Computing Platform	Qualcomm Quad-core processor, 1.1GHz
Operating System	Android 7.1.2
RAM	2 GB
Storage	16 GB eMMC (up to 64G TF card expansion)
LCD	7" HD (1280 x800), sunlight readable 800cd/m2
Touchscreen	10 point multi touch capacitive touchscreen
Camera	front:2 MP Rear: 8 MP rear camera with LED light
Bluetooth	BT4.2 LE
WLAN	IEEE 802.11a/b/g/n; 2.4GHz/5GHz
Mobile Broadband	LTE, HSPA+, UMTS, EDGE, GPRS, GSM (Data and Voice)
GNSS	GPS/GLONASS
NFC	Read/Write Mode: ISO/IEC 14443 A&B up to 848 kbit/s, FeliCa at 212 & 424 kbit/s, MIFARE 1K, 4K NFC Forum type 1, 2, 3, 4, 5 tags, ISO/IEC 15693 All peer-to-peer modes Card Emulation Mode (from host): NFC Forum T4T (ISO/IEC 14443 A&B) at 106 kbit/s
Sound	Build-in speaker 2W x 1 85dB internal microphones x1
Interfaces	RS232 X2; GPIO Input x2; output x2; RS485 x 1 optional; RS422 x 1 optional; USB Type-A; ACC x 1; OBD II; RS232 X1; ACC x 1; J1939
Sensors	Acceleration sensors, ambient light sensor
Power	Battery: User replaceable Li-ion 5000 mAh Battery operating time: 5h(typical) DC 8-36V (ISO 7637-2 Compliant)
Buttons	Power on/off button: x1
Mounting	75mm vesa/ RAM
Dimensions	200W x 130H x 28.5D
Weight	785g

Rugged Vehicle Tablet

Part Number:	Description :
RVT-7	Rugged Vehicle 7" Tablet



SCC - Seatronx Command Control

Features:

- 7" touchscreen panel with panel mount bracket included
- Processor is PoE powered, eliminating additional power cable
- POE connectivity
- Power individual and/or multiple displays on and off
- Wide dimming range control
- Clear command input selection with presets for multiple modes of operation
- Easy installation and set up.
- Fully customizable with built in menus and graphics options
- Works seamlessly with Seatronx VSRT series
- Fast and Safe operation
- Modular Video, Touchscreen, Keyboard and Mouse Switching capability



NEW Seatronx Command Control

Eliminate the need for complicated video matrix switchers and take complete control of your bridge or command center with the new Seatronx Command Control system. This system is engineered to work seamlessly with Seatronx VSRT series displays. It is a premier modular digital switching solution for any multi-display projects where easy and safe operation of systems is paramount. This new modular control is fast, reliable and customizable to all your unique requirements. Simple one touch commands allow you to easily take control of individual or multiple displays from any helm, bridge or control center.

SCC Seatronx Command Control System

Part Number:	Description :
Digital Switching Control	
SCC-PRO-3	Bridge Command Processor
SCC-7-A6	7" POE Powered Touch Panel
SCC-LIC-1	Single Touch Panel License for SCC-PRO
SCC-LIC-U	Unlimited License for SCC-PRO for multiple Touch panel controllers
*Programming fee may apply for special features-Consult Factory	
Video Matrix Options	
Select SCC-9x9VMX and then select your video input and output card options	
SCC-9x9-VMC	9 Input x 9 Output Video Matrix Chassis
SCC-VMI-HDMI	HDMI Input Card 1080p for Modular Video Matrix
SCC-VMO-HDMI	HDMI Output Card 1080p for Modular Video Matrix
SCC-VMO-HDBT	4K/30 HDBaseT Output Card up to 220' & 1080p to 330' for Modular Video Matrix
SCC-HDBT-R	4K/30 HDBaseT Receiver up to 220' & 1080p to 330'
SCC-VMI-DVI	DVI Input Card for Modular Video Matrix
SCC-VMI-VGA	VGA Input Card for Modular Video Matrix
SCC-VMO-VGA	VGA Output Card for Modular Video Matrix
SCC-VMI-SDI	SDI Input Card for Modular Video Matrix
SCC-VMO-SDI	SDI Output Card for Modular Video Matrix
SCC-VMI-Composite	Composite Input Card for Modular Video Matrix
SCC-VMO-Composite	Composite Output Card for Modular Video Matrix
SCC-VMI-Component	Component Input Card for Modular Video Matrix
SCC-VMO-Component	Component Output Card for Modular Video Matrix
SCC-VMI-Fiber	Fiber Input Card for Modular Video Matrix
SCC-VMO-Fiber	Fiber Output Card for Modular Video Matrix
KVM 8x8	
SCC-KVM-8x8	8 x 8 USB KVM Switcher

DIGITAL CONTROLS

SCC Push Button Controls available. Consult factory for details



SCC-PRO-3 Bridge Command Processor

PHT-SRT-CTL

Remote Control Unit for PHT/SRT Monitors

FEATURES

- PROTOCOL: NCOM OR SCOM
- CONNECT UPTO 12 UNITS DAISY CHAINED THROUGH RS485
- 9-36VDC POWER INPUT
- 4.3" DISPLAY
- PCAP TOUCHSCREEN
- FLUSH DESKMOUNT OR TABLETOP
- DIMENSIONS: BXHxD= 88.2X139.9X40.1MM
- SUNLIGHT READABLE (800 CD/M2)
- RESOLUTION: 480 X 272 PIXELS
- 24-BIT TRUE COLOR



PHT-SRT-CTL	
Part Number:	Description :
PHT-SRT-CTL	The PHT-SRT-CTL is a compact digital control that allows for easy touch command control from any bridge. Turn displays on and off, brighten or dim to your preference, and select any input for up to 12 displays. Easy to install and operate and built with a small profile to fit in tight consoles.



SEA - BV7

Features

- Monitor management interface
- Manage all of your monitors with one touchscreen display
- 5.6" Color TFT display
- Extron Compatible (Coming Soon)
- Fast Touch Action
- Simple Setup



SEA-BV7

Part Number:	Description :
SEA-BV7	7" Touch screen controller designed to control our Seatronx VSRT displays. Control all VSRT monitors with the touch of a button, Power all on/off, all dimming and all red mode. You can control all aspects of your VSRT monitors, change inputs use PIP mode change anything setting with the touch of a button.
Extron controlling coming soon	

MPPC Series

LCD Marine Panel PCs

MPPC Series

Flat P-CAP Marine Panel PCs with 19", 24" or 26" Display



- 1280 x 1024 (19"), 1920 x 1080 (24"), 1920 x 1200 (26") resolution with projective capacitive multi-touch screen
- Edge-to-edge narrow bezel design and fanless cooling system
- Color calibrated for ECDIS compliance (Optional)
- Capacitive touch keys for quick function access and display control
- (Support ECDIS DAY, DUSK, and NIGHT mode switching)
- Optional 4 x COM port (NMEA 0183 protocol) 422/485 switchable via software
- Meets the requirements of Industrial marine standards, including IEC60945 4th Edition, DNVGL-CG-0339, IACS E10
- Supports capacitive touch key lock / touchscreen lock function

SPECIFICATIONS: Commercial Panel PCs ECDIS Touch Screen Displays:			
Marine Panel PC	MPPC-19T	MPPC-24T	MPPC-26T
Diagonal (active area) Inch	19	24	26
Native Resolution (Pixels)	1280 x1024	1920 x 1080	1920 x 1200
Colors	16.7M	16.7M	16.7M
Contrast Ratio	1200:1	5000:1	1500:1
Brightness	350	350	350
Viewing Angle (left, right)	89, 89	89, 89	89, 89
Viewing Angle (up, down)	89, 89	89, 89	89, 89
Backlight Dimming	-0 (3 Stage ECDIS Option)	-0 (3 Stage ECDIS Option)	-0 (3 Stage ECDIS Option)
Processor	Intel i5-5200U 2.2Ghz (turbo to 2.7GHz)	Intel i5-5200U 2.2Ghz (turbo to 2.7GHz)	Intel i5-5200U 2.2Ghz (turbo to 2.7GHz)
System Memory	Standard 8GB,(Max 16GB)	Standard 8GB,(Max 16GB)	Standard 8GB,(Max 16GB)
Ethernet	Dual Ethernet Gb LAN	Dual Ethernet Gb LAN	Dual Ethernet Gb LAN
Storage	128GB SSD	128GB SSD with 1 x Removable Drive Bay	128GB SSD with 1 x Removable Drive Bay
Comports	1x RS232/422/485	1x RS232/422/486	1x RS232/422/487
USB	1 x USB2.0, 2 x USB3.0	1 x USB2.0, 2 x USB3.1	2 x USB2.0, 2 x USB3.1
HDMI out	1x HDMI	1x HDMI	1x HDMI
Operating System	Standard with Windows 10IoT Enterprise Optional: Windows Embedded 8.1 Ind Pro Windows Embedded 8 Std. Windows Em- bedded 7 Std. Windows 7 Pro for Emded- ded System	Standard with Windows 10IoT Enterprise Optional: Windows Embedded 8.1 Ind Pro Windows Embedded 8 Std. Windows Em- bedded 7 Std. Windows 7 Pro for Emded- ded System	Standard with Windows 10IoT Enterprise Optional: Windows Embedded 8.1 Ind Pro Windows Embedded 8 Std. Windows Em- bedded 7 Std. Windows 7 Pro for Emded- ded System
NMEA Interface	4x 0183 Port (Optional)	4x 0183 Port (Optional)	4x 0183 Port (Optional)
Digital IN/OUT	8 Channel Isolated Digital Input/output (Op- tional)	9 Channel Isolated Digital Input/output (Op- tional)	10 Channel Isolated Digital Input/output (Op- tional)
Speaker	2x 2W Speaker	2x 2W Speaker	2x 2W Speaker
Buzzer	75 dB~80 dB, 230 Hz, 1m	76 dB~80 dB, 230 Hz, 1m	77 dB~80 dB, 230 Hz, 1m
Power	9-36VDC Isolated power supply 80W (Max)	9-36VDC Isolated power supply 80W (Max)	9-36VDC Isolated power supply 80W (Max)
Power on/off dimming control	Front Bezel	Front Bezel	Front Bezel
Projected Capacitive touch	YES	YES	YES
ECDIS Color Calibration	Optional	Optional	Optional
Mounting	Panel Mount , Vesa Mount	Panel Mount , Vesa Mount	Panel Mount , Vesa Mount
Dimensions	429mm X 392mm X 72.8mm 16.889 X 15.433 X 2.866	595mm X 385mm X 63.8mm 23.43 X 15.16 X 2.51	621mm X 432.4mm X 85.5 24.44 X 17.02 X 3.66
Cutout	408mm X 359mm 16.03 X 14.13	572mm x 363mm 22.51 X 14.29	598mm X 408mm 23.54 X 16.06
IP Rating	IP65 Front	IP65 Front	IP65 Front
IEC60945, DNV, IACS E10, CE,FCC	YES	YES	YES
Operating Temperature	-15 to 55 c	-15 to 55 c	-15 to 55 c

ORDERING INFORMATION: Commercial Panel PCs ECDIS Touch Screen Displays:

Part Number:	Description :
MPPC-19T	19" 1280x1024 Commercial Panel PC, I5 2.2GHz,8GBRAB, 128GB SSD,Pre-Loaded with Win10 IoT 64 Enterprise, 9-36vdc, wide dimming with three stage ECDIS dimming Night,Dusk,Day
MPPC-24T	24" 1920x1080 Commercial Panel PC, I5 2.2GHz,8GBRAB, 128GB SSD,Pre-Loaded with Win10 IoT 64 Enterprise, 9-36vdc, wide dimming with three stage ECDIS dimming Night,Dusk,Day
MPPC-26T	26" 1920x1200 Commercial Panel PC, I5 2.2GHz,8GBRAB, 128GB SSD,Pre-Loaded with Win10 IoT 64 Enterprise, 9-36vdc, wide dimming with three stage ECDIS dimming Night,Dusk,Day

For ECDIS option Add -ECDIS at the end of the above part numbers (sample MPPC-19T-ECDIS)

SSPPC Series

Stainless Steel Panel PCs

MPPC Series

P-CAP Touch, IP66 Sealed Panel PCs with 15", 17", 18.5", 19", 21" or 24" Display



COMPUTERS



Model	SSPPC-15T	SSPPC-17T	SSPPC-185T	SSPPC-19T	SSPPC-215T	SSPPC-24T
Active Area	15"	17"	18.5"	19"	21.5"	24"
Resolution	1024 x 768	1280 x 1024	1920 x 1080	1280 x 1024	1920 x 1080	1920 x 1080
Case Material	Stainless Steel					
Case Seal	IP66 6 Sides					
Connection Seal	M12 Plastic waterproof					
Connections	HDMI/LAN/USB/					
Power Input	DC 12~24V, Optional 9~36VDC					
CPU	Kabylake-U i5-7300U or Kabylake-U i7-7600U					
Brightness	300nits	350nits	350nits	250nits	250nits	250nits
Viewing Angle	88/88/88/88	80/80/60/80	89/89/89/89	85/85/80/80	89/89/89/89	89/89/89/89
Operating Temp.	-20~60°C					

COMPUTERS

SSPPC Series Stainless Steel Panel PCs	
Part Number:	Description :
SSPPC-15T-i5	15" Stainless Steel P-cap Touch Panel PC, Kabylake-U i5-7300U, with -20~60 degrees operating temp, 6 sides IP66, M12 plastic waterproof connectors of HDMI/LAN/USB/Power input, DC 12~24V, Optional 9~36VDC, with DC 12V adapter
SSPPC-15T-i7	15" Stainless Steel P-cap Touch Panel PC, Kabylake-U i7-7600U, with -20~60 degrees operating temp, 6 sides IP66, M12 plastic waterproof connectors of HDMI/LAN/USB/Power input, DC 12~24V, Optional 9~36VDC, with DC 12V adapter
SSPPC-17T-i5	17" Stainless P-cap Touch Panel PC, Kabylake-U i5-7300U, with -20~60 degrees operating temp, 6 sides IP66, M12 plastic waterproof connectors of HDMI/LAN/USB/Power input, DC 12~24V, Optional 9~36VDC, with DC 12V adapter
SSPPC-17T-i7	17" Stainless P-cap Touch Panel PC, Kabylake-U i7-7600U, with -20~60 degrees operating temp, 6 sides IP66, M12 plastic waterproof connectors of HDMI/LAN/USB/Power input, DC 12~24V, Optional 9~36VDC, with DC 12V adapter
SSPPC-185T-i5	18.5" Stainless P-cap Touch Panel PC, Kabylake-U i5-7300U, with -20~60 degrees operating temp, 6 sides IP66, M12 plastic waterproof connectors of HDMI/LAN/USB/Power input, DC 12~24V, Optional 9~36VDC, with DC 12V adapter
SSPPC-185T-i7	18.5" Stainless P-cap Touch Panel PC, Kabylake-U i7-7600U, with -20~60 degrees operating temp, 6 sides IP66, M12 plastic waterproof connectors of HDMI/LAN/USB/Power input, DC 12~24V, Optional 9~36VDC, with DC 12V adapter
SSPPC-19T-i5	19" Stainless P-cap Touch Panel PC, Kabylake-U i5-7300U, with -20~60 degrees operating temp, 6 sides IP66, M12 plastic waterproof connectors of HDMI/LAN/USB/Power input, DC 12~24V, Optional 9~36VDC, with DC 12V adapter
SSPPC-19T-i7	19" Stainless P-cap Touch Panel PC, Kabylake-U i7-7600U, with -20~60 degrees operating temp, 6 sides IP66, M12 plastic waterproof connectors of HDMI/LAN/USB/Power input, DC 12~24V, Optional 9~36VDC, with DC 12V adapter
SSPPC-215T-i5	21.5" Stainless P-cap Touch Panel PC, Kabylake-U i5-7300U, with -20~60 degrees operating temp, 6 sides IP66, M12 plastic waterproof connectors of HDMI/LAN/USB/Power input, DC 12~24V, Optional 9~36VDC, with DC 12V adapter
SSPPC-215T-i7	21.5" Stainless P-cap Touch Panel PC, Kabylake-U i7-7600U, with -20~60 degrees operating temp, 6 sides IP66, M12 plastic waterproof connectors of HDMI/LAN/USB/Power input, DC 12~24V, Optional 9~36VDC, with DC 12V adapter
SSPPC-24T-i5	23.8" Stainless P-cap Touch Panel PC, Kabylake-U i5-7300U, with -20~60 degrees operating temp, 6 sides IP66, M12 plastic waterproof connectors of HDMI/LAN/USB/Power input, DC 12~24V, Optional 9~36VDC, with DC 12V adapter
SSPPC-24T-i7	23.8" Stainless P-cap Touch Panel PC, Kabylake-U i7-7600U, with -20~60 degrees operating temp, 6 sides IP66, M12 plastic waterproof connectors of HDMI/LAN/USB/Power input, DC 12~24V, Optional 9~36VDC, with DC 12V adapter
Options/Accessories	
WVI-36	Wide Voltage Input 9~36VDC
VS-75x100	VESA Stand: 75 x 75 / 100 x 100 VESA Stand for 15kg (33.1lbs)

MPC Series

Seatronx Marine & Industrial PCs



MPC-3600



MPCRAC Rack Mount



MPC-101 Compact PC

COMPUTERS

SEATRONX offers the highest quality marine computers specifically designed to withstand shock and vibration, power fluctuation with wide temperature tolerance.



COMPUTERS

Part Number:	MPC-101	MPCRAC (optional MPCRAC-i7)	MPC-3600-i5	MPC-3600-i7
CPU	Intel Celeron J1900, Quad Core, 2MB Cache, 2.0 GHz	Intel i5 9400 CPU (i7 optional)	Core™ i5-6500TE, Quad Core, 6MB Cache, up to 3.3 GHz, Skylake	Core™ i7-6700TE, Quad Core, 8MB Cache, up to 3.4 GHz, Skylake
Voltage	9-48VDC	100-240VAC	9-48VDC	9-48VDC
RAM	DDR3 SODIMM	DDR4 3200MHz	DDR4/2400,SO-DIMM	DDR4/2400,SO-DIMM
8GB	Standard	NA	Standard	NA
16GB	NA	Standard	NA	Standard
Video	1x DVI-I	DVI / VGA / HDMI Video Out	1x DVI-I (VGA by optional split cable); 2x DP	1x DVI-I (VGA by optional split cable); 2 x DP
STORAGE	120GB 2.5" SATA SSD (internal)	2TB Hard Drive	1x 240GB 2.5" SATA SSD (removeable)	1x 480GB 2.5" SATA SSD (removeable)
USB ports	1x USB 3.0, 3x USB 2.0	2x USB 2.0 Rear; 4x USB 3.0 Rear; 2x USB 3.0 Front	6x USB 3.0 (4 rear / 2 front); 2x USB 2.0 (front)	6x USB 3.0 (4 rear / 2 front); 2x USB 2.0 (front)
Serial ports	2x RS-232/422/485	4x RS232/485 Ports	4x RS-232/422/485 (rear); 2x RS-232/422/485 (internal)	4x RS-232/422/485 (rear); 2x RS-232/422/485 (internal)
Ethernet	2x GbE	1	2x GbE	2x GbE
Expansion	2x Full-size Mini PCIe	(1) PC le 3.0 x16, (1) PC le 3.0 x16 (@ x4 maximum), (1) PC le 3.0 x1 and (1) PCI-BUS vertical	4x Full-size Mini PCIe	4x Full-size Mini PCIe
I/O	4x COM	8x USB; 4xCOM	2x COM, 2x DP, 1x DVI-I	2x COM, , 2x DP, 1x DVI-I
Remote Power option	YES	Available on Request	YES	YES
Operating System	Windows 7/10	Windows 10 Pro 64 Bit	Windows 7/10 & Linux	Windows 7/10 & Linux
Case Style	Rugged	Rugged Rack Mount	Rugged	Rugged

NOTE: THE SPECIFICATIONS ABOVE ARE FOR OUR STANDARD SYSTEMS. CUSTOM SYSTEMS ARE AVAILABLE. CALL FACTORY FOR DETAILS.



Part Number:	WK430 Series
CPU	Onboard Intel® 6th /7th Gen Core™ U-series Processor
Voltage	9-36VDC
RAM	DDR4 SO-DIMM 1866/2133 MHz up to 16GB
8GB	NA
16GB	Standard
Video	Dual HDMI
STORAGE	Dual 256GB SSD
USB ports	2 x 2.0 + 2 x 3.0
Serial ports	3 x RS-232, 1 x RS-232/422/485
Ethernet	2x GbE
Expansion	NA
I/O	
Remote Power option	YES
Operating System	Win 10 IoT
Case Style	IP67 Waterproof

NOTE: THE SPECIFICATIONS ABOVE ARE FOR OUR STANDARD SYSTEMS. CUSTOM SYSTEMS ARE AVAILABLE. CALL FACTORY FOR DETAILS.



Antennas and Routers

ANTENNAS / ROUTERS



Connect-Route
Powerhouse Router
with Two Global LTE
Cellular Modems



MBA-400
7-Cable Antenna with 4x LTE,
2x Wi-Fi and 1x GNSS



SEA-750L
3G/4G Dual-Band
Wireless Router



SEA-IND-4G-Route
CAT M1, CAT 1, CAT 4 Modems
Supported [1] External Omni
Antenna Support
Full Band 700MHz~2700MHz
Support

Antennas and Routers

Part Number:	Description :
Antennas	
MBA-400-3	2X LTE Global, 1X GPS (N-Female Connections) Used for Connect Lite Router, XB200 Router, Peplink Transit Series Routers, etc
MBA-400-5	2X LTE Global, 1X GPS (N-Female Connections) Used in Peplink HD2 Routers, etc.
MBA-400-7	4X LTE Global, 2X Wi-Fi, 1X GPS (N-Female Connections) Used in Connect Router, Peplink HD2, etc.
Note: All of our antennas are 5G LTE band compatible on all bands. As well as backwards through 4 and 3G bands.	
Routers	
CONNECT-ROUTE	<p>The Connect-Route is an all-in-one internet powerhouse designed to meet the demanding network requirements of today's yacht owners. Equipped with two Global LTE Cellular Modems that can deliver maximum data rates up to 150 Mbps downlink and 50 Mbps uplink*</p> <p>*Speeds may vary based on SIM card provider and Cellular Plan provisions.</p> <p>The Connect-Route also has a built in 2.4G/5G Wi-Fi Bridge that allows connection to hotspots at the fastest speeds available today replacing the need to add extra equipment or steps to connect to the Marina's Wi-Fi. The Connect-Route has 3 controllable WAN ports to connect your vessel to other internet services such as Satellite, Shore Lines, etc. and the USB port in the front supports tethering to Mobile Devices. And finally, two 2 LAN ports are provided to give access to the rest of the devices on board.</p> <p>Control of download and upload speeds as well as blocking is available down to the Device level via the DHCP server list in the easy-to-use interface.</p>
SEA-750L	<p>The SEA-750L is a 3G/4G dual-band wireless router, widely used for smart mobile and IoT deployments. With a built-in interchangeable mini PCIe cellular 3G/4G data module to support different operators and can be used all over the world. The SEA-750L has 2.4 and 5 GHz Wireless Hotspot that can also be configured to be operated simultaneously as a Wi-Fi Bridge to connect your device to a local wireless network. Equipped with 1 WAN port and 1 LAN port the SEA-750L has the ability to provide a hard connected internet source as well as the built-in cellular internet option to a local network. This capability allows the SEA-750L to provide internet redundancy in areas with spotty local providers.</p>
SEA-IND-4G-ROUTE	<p>The SEA-IND-4G-ROUTE-MIL is a high cost-effective 4G industrial router. The internal industrial 4G modem and external 4G antenna connections provide stable Internet access, so it can be easily configured everywhere, and the onboard 4G modem (CAT M1 or CAT 1 or CAT 4) can be set for different download and upload speeds for various application scenarios. The durable aluminum alloy enclosure and hardware Watchdog ensure it remains stable in harsh environments. The Wi-Fi, RS485 interface or IoT module (optional BLE or Zigbee) can meet different application requirements of industrial equipment in both wired and wireless options making it extremely flexible in use cases for different industrial IoT applications.</p>

Trackballs & Keyboards

Type Approved and Non Type Approved



Seatronx is proud to be a distributor for NSI. NSI is the waterproof keyboard & waterproof trackball specialist delivering reliable solutions for demanding industrial, marine, medical, kiosk, food and military applications.









Illuminated trackballs make operation easy in any lighting condition. Our marine pointing devices include: waterproof trackballs, ECDIS trackballs, IEC 60945 trackballs, IP68 scroll wheel, laser trackballs and many other options and configurations.








Whatever your requirements, whatever your application, NSI wants to make sure our products will provide you the highest level of control and accuracy. Besides a large range of standard products, our dedicated team of development engineers enables NSI to deliver optimum custom products fulfilling your exact requirements.

Main trackball features

- Most extended range of trackballs
- ECDIS trackballs
- IEC 60945 trackballs
- Unique IP68 trackball solutions
- Opto-mechanical trackballs, up to IP65 sealing
- Laser-optical trackballs, IP68 sealing
- Panel mount or enclosed standard versions
- Highly robust, vandal-proof and all metal construction
- Halo backlit trackball with PWM dimming & RGB control
- Trackballs with glass panel & touch keys
- Trackballs with scroll wheel to improved ease of use
- Military grade products
- Easy customization





IEC60945 MARINE CERTIFIED TRACKBALLS





	TYPENUMBER		FORMAT	SEALING
	<u>E38-76A31D-M017</u>	ergonomic trackball	desktop	IP68
	<u>E50-76A2AD-M004</u>	ergonomic trackball	panel mount	IP68
	<u>E50-76A31D-M000</u>		desktop	IP68
	<u>LTSX50F8-0001-MC3</u>		panel mount, studs	IP68
	<u>LTSX50F8-0BT1-MC3</u>	black carrier	panel mount, studs	IP68
	<u>LTSX50N8-0001-MC3</u>		panel mount, holes	IP68
	<u>LTSX50N8-0BT1-MC3</u>	black carrier	panel mount, holes	IP68
	<u>MTSX38F8-0001-MC3</u>		panel mount, studs	IP68
	<u>MTSX38F8-0BT1-MC3</u>	black carrier	panel mount, studs	IP68
	<u>MTSX38N8-0001-MC3</u>		panel mount, holes	IP68
	<u>MTSX38N8-0BT1-MC3</u>	black carrier	panel mount, holes	IP68
	<u>TBE38F0-0BT1-MC3</u>	ergonomic trackball	panel mount	IP68
	<u>TBE38N0-0BT1-MC3</u>	ergonomic trackball	panel mount	IP68
	<u>TSX50C1-0BT1-MC3</u>	black carrier and bezel	panel mount	IP67
	<u>TSX50F2-0001-MC3</u>	IP65 switches	panel mount, studs	IP65
	<u>TSX50F2-0BT1-MC3</u>	IP65 switches - black carrier	panel mount, studs	IP65
	<u>TSX50F8-0001-MC3</u>	IP68 switches	panel mount, studs	IP68
	<u>TSX50F8-0BT1-MC3</u>	IP68 switches - black carrier	panel mount, studs	IP68
	<u>TSX50N2-0001-MC3</u>	IP65 switches	panel mount, holes	IP65
	<u>TSX50N2-0BT1-MC3</u>	IP65 switches- black carrier	panel mount, holes	IP65
	<u>TSX50N8-0001-MC3</u>	IP68 switches	panel mount, holes	IP68
	<u>TSX50N8-0BT1-MC3</u>	IP68 switches - black carrier	panel mount, holes	IP68
	<u>TSX50S8-0001-MC3</u>		desktop	IP68

IEC60945 MARINE CERTIFIED KEYBOARDS		TYPENUMBER				COUNTRY LAYOUTS (xx)													
						FORMAT	BACKLIT	SEALING	NA xx=	US 1	RU 7	BE 32	FR 33	ES 34	IT 39	UK 44	DK 45	S 46	NO 47
	no pointer	<u>KSM103B00xx-W-MC1</u>	panel mount / bezel	yes	IP67		US	RU		FR		UK	DK	S		DE	KO	TR	
	ergonomical trackball	<u>KSME103B00xx-W-MC1</u>	panel mount / bezel	yes	IP67		US	RU		FR		UK	DK	S		DE	KO	TR	
		<u>KSME103S00xx-W-MC1</u>	desktop	yes	IP67		US	RU		FR		UK	DK	S		DE	KO	TR	
	50 mm IP68 ball	<u>KSML92F00xx-W-MC1</u>	panel mount	yes	IP67		US	RU								DE			
		<u>KSML92S00xx-W-MC1</u>	desktop	yes	IP67		US	RU									DE		
	50 mm ball	<u>KSML106F00xx-W-MC1</u>	panel mount	yes	IP65		US			FR			DK				KO		
		<u>KSML106B00xx-W-MC1</u>	panel mount / bezel	yes	IP65		US			FR			DK					KO	
		<u>KSML106S00xx-W-MC1</u>	desktop	yes	IP65		US			FR			DK					KO	
	50 mm IP68 ball	<u>KSMX106F00xx-W-MC1</u>	panel mount	yes	IP67		US	RU				UK	DK	S		DE		TR	
		<u>KSMX106B00xx-W-MC1</u>	panel mount / bezel	yes	IP67		US	RU				UK	DK	S		DE		TR	
		<u>KSMX106S00xx-W-MC1</u>	panel mount / bezel	yes	IP67		US	RU				UK	DK	S		DE		TR	
	rubber, 25 mm ball	<u>RKCT92F00xx-W-MC1</u>	panel mount	yes	IP67		US	RU		FR		IT				NO	DE	TR	
		<u>RKCT92S00xx-W-MC1</u>	desktop	yes	IP67		US	RU		FR		IT				NO	DE	TR	
		<u>RKCT92F00xx-N-MC1</u>	panel mount	no	IP67		US	RU		FR		IT				NO	DE	TR	
		<u>RKCT92S00xx-N-MC1</u>	desktop	no	IP67		US	RU		FR		IT				NO	DE	TR	
	rubber, ergonomic ball	<u>RKTE85B00xx-W-MC1</u>	panel mount	yes	IP67		US			FR			DK			DE			
		<u>RKTE85S00xx-W-MC1</u>	desktop	yes	IP67		US			FR			DK			DE			
		<u>RKTE85B00xx-N-MC1</u>	panel mount	no	IP67		US			FR			DK			DE			
		<u>RKTE85S00xx-N-MC1</u>	desktop	no	IP67		US			FR			DK			DE			

Country layouts : US (US), Cyrillic Russian (RU), Belgian (BE), French (FR), Spanish (SP), Italian (IT), UK (UK), Danish (DK), Swedish (S), Norwegian (NO), German (DE), Korean (KO), Turkish (TR)

INDUSTRIAL TRACKBALLS

	TYPENUMBER	INFO	FORMAT	BALL	SEALING
	<u>E50-76A2AD</u>	laser ball, scroll wheel	panel mount	50	IP68
	<u>E50-76A31D</u>		desktop	50	IP68
	<u>LTSX50F8</u>	scroll wheel	panel mount, studs	50	IP68
	<u>LTSX50F8-BT1</u>	scroll wheel - black carrier	panel mount, studs	50	IP68
	<u>LTSX50N8</u>	scroll wheel	panel mount, holes	50	IP68
	<u>LTSX50N8-BT1</u>	scroll wheel - black carrier	panel mount, holes	50	IP68
	<u>TBS50F2</u>	black ball	panel mount	50	IP65
	<u>TBS50F2-BT1</u>	black ball - black carrier	panel mount	50	IP65
	<u>TCX50F8</u>	halo RGB backlit	panel mount	50	IP68
	<u>TCX50F8PWM</u>	halo RGB backlit, PWM	panel mount	50	IP68

INDUSTRIAL KEYBOARDS		TYPENUMBER	FORMAT	BACKLIT	SEALING
	ergonomical trackball	<u>KSME103BxxUSB-WLED</u>	panel mount / bezel	yes	IP67
		<u>KSME103SxxUSB-WLED</u>	desktop	yes	IP67
	38mm ball	<u>KSML38F1yyy-WLED</u>	panel mount	yes	IP65
		<u>KSML38S1yyy-WLED</u>	desktop	yes	IP65
	50mm IP68 ball	<u>KSML92Fxxyyy-WLED</u>	panel mount	yes	IP67
		<u>KSML92Sxxyyy-WLED</u>	desktop	yes	IP67
	50mm ball	<u>KSML106Bxxyyy-WLED</u>	panel mount / bezel	yes	IP65
		<u>KSML106Fxxyyy-WLED</u>	panel mount	yes	IP65
		<u>KSML106Sxxyyy-WLED</u>	desktop	yes	IP65

Country layouts : US (US), Cyrillic Russian (RU), Belgian (BE), French (FR), Spanish (SP), Italian (IT), UK (UK), Danish (DK), Swedish (S), Korean (KO), Turkish (TR)

JOYSTICK & TOUCHPADS

	TYPENUMBER	INFO	FORMAT	SEALING
	<u>CST100F2</u>	dual function joystick	panel mount	IP55
	<u>CST100S2</u>	dual function joystick	desktop	IP55
	<u>SPS55F8</u>	stainl. steel touchpad unit	panel mount	IP68
	<u>TPD-55A326</u>	6 inch glass touchpad	desktop	IP65
	<u>TPP-55A1A6</u>	6 inch glass touchpad	panel mount	IP65
	<u>TPM-85A526</u>	6 inch glass touchpad	OEM	IP65

SurfVision HD Powered By SEATRONX



NVR-8001 Systems

Part Number:	Description :
NVR-8001	Marine Video Recorder with powder coated enclosure, 2TB hard disk, WiFi access, Integrated 8 ports POE, HDMI output, PC Windows and IOS iPhone/iPad ready.
NVR-MB-8001	Remote Box and Marine Video Recorder with powder coated enclosure, 2TB hard disk, WiFi access, Integrated 8 ports POE, HDMI output, PC Windows and IOS iPhone/iPad ready.
NVR-GPS-8001	Integrated GPS signal and antenna on Marine Video Recorder with powder coated enclosure, 2TB hard disk, WiFi access, Integrated 8 ports POE, HDMI output, PC Windows and IOS. iPhone/iPad ready.
NVR-GPS-MB-8001	Integrated GPS signal and antenna including Remote Box and Marine Video Recorder with powder coated enclosure, 2TB hard disk, WiFi access, Integrated 8 ports POE, HDMI output, PC Windows and IOS iPhone/iPad ready.

Note: Units with integrated GPS can be activated to report AIS Position B messages to Marine Traffic and vessel position can be seen on Marine Traffic Web site.

REMOTE BOX Systems

Part Number:	Description :
MB-8001	Remote Marine Video Recorder access using external WiFi or Cellular signal with Wifi extender, WiFi Scanning, and DHCP
MB-GPS-8001	Remote Marine Video Recorder access with integrated GPS signal. Includes external WiFi or Cellular signal, WiFi Scanning, and DHCP provider. Small GPS antenna included
MB-GPS-GSM 8001	Remote Marine Video Recorder access with integrated GPS signal and GSM cellular option. Includes external WiFi or Cellular signal access, WiFi Scanning, and DHCP provider. Small GPS antenna included. Optional Shakespear Jellyfish antenna.

Note: The Remote Box with integrated GPS has basic Geofencing activated local or remotely via internet using IOS, android or PC devices using a Web based application

Part Number:	Description :
SV-CAM-B	Brushed Aluminum Bullet Camera, 1080p anodized custom marine IP camera up to 30 fps
ORM	Out Rigger Mount
BM	Base Plate Mount
SV-CAM-D	White Mini Dome Camera, 1080p marine IP camera up to 30 fps
SV-CAM-D-SS	Stainless Steel Mini Dome Camera, 1080p marine IP camera up to 30 fps
CAM-15M-CAB	15 Meter Cable Option

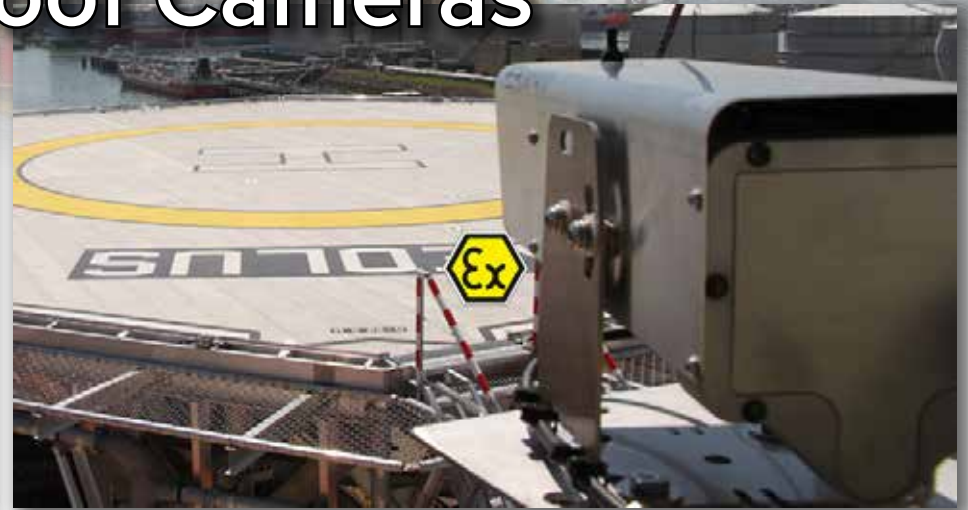
Accessories

Part Number:	Description :
Axis M7011	Axis analog to IP encoder to convert one (1) previous analog camera to Surfvision video recorder h264 format
Hikvision DS-6701HWI	Hikvision analog to IP encoder to convert one (1) previous analog camera to Surfvision video recorder h264 format
Hikvision DS-6704HWI	Hikvision analog to IP encoder to convert up to 4 previous analog cameras to Surfvision video recorder h264 format

Explosion Proof Cameras



Compact EX Cameras



Compact EX Cameras

The explosion proof Compact and AF-Zoom cameras are ideal for CCTV systems, process guarding and detailed view on moving parts and the surroundings. The cameras can be combined with regular Orlaco systems and third party systems. The cameras have been certified for installation in zone 1, 2, 21 and 22 according to ATEX, IECEx and can therefore be installed in practically all regions worldwide. Orlaco has been certified as Approved Manufacturer Ex Cameras by Dekra QAR audit.

Explosion Proof Cameras

Color Compact Cameras



0193060	Compact camera CCC Ex 12° PAL Zone 1/21
0193050	Compact camera CCC Ex 23° PAL Zone 1/21
0193040	Compact camera CCC Ex 33° PAL Zone 1/21
0193030	Compact camera CCC Ex 44° PAL Zone 1/21
0193020	Compact camera CCC Ex 52° PAL Zone 1/21
0193010	Compact camera CCC Ex 70° PAL Zone 1/21
0193000	Compact camera CCC Ex 81° PAL Zone 1/21
0194060	Compact camera CCC Ex 12° PAL Zone 2/22
0194050	Compact camera CCC Ex 23° PAL Zone 2/22
0194040	Compact camera CCC Ex 33° PAL Zone 2/22
0194030	Compact camera CCC Ex 44° PAL Zone 2/22
0194020	Compact camera CCC Ex 52° PAL Zone 2/22
0194010	Compact camera CCC Ex 70° PAL Zone 2/22
0194000	Compact camera CCC Ex 81° PAL Zone 2/22
0193130	Compact camera CCC Ex 12° NTSC Zone 1/21
0193120	Compact camera CCC Ex 23° NTSC Zone 1/21
0193110	Compact camera CCC Ex 33° NTSC Zone 1/21
0193100	Compact camera CCC Ex 44° NTSC Zone 1/21
0193090	Compact camera CCC Ex 52° NTSC Zone 1/21
0193080	Compact camera CCC Ex 70° NTSC Zone 1/21
0193070	Compact camera CCC Ex 81° NTSC Zone 1/21
0194130	Compact camera CCC Ex 12° NTSC Zone 2/22
0194120	Compact camera CCC Ex 23° NTSC Zone 2/22
0194110	Compact camera CCC Ex 33° NTSC Zone 2/22
0194100	Compact camera CCC Ex 44° NTSC Zone 2/22
0194090	Compact camera CCC Ex 52° NTSC Zone 2/22
0194080	Compact camera CCC Ex 70° NTSC Zone 2/22
0194070	Compact camera CCC Ex 81° NTSC Zone 2/22

AF-Zoom Cameras



0192121	AFZ camera Aluminium Ex PAL RS485
0192031	AFZ camera Aluminum Ex Zone 1/21 PAL RS232
0192041	AFZ camera Stainless Steel Ex Zone 1/21 PAL RS232
0192131	AFZ camera Stainless Steel Ex Zone 1/21 PAL RS485

Options






1221300	Standard Ex multi cable (price per meter)
---------	---



Pan Tilt Zoom Cameras



Pan Tilt Zoom Cameras

4G PTZ camera		
	PART NUMBER	FEATURES
	360-PRO-W (white)	<ul style="list-style-type: none"> • HiSilicon embedded system, support ONVIF protocol, national standard GB28181, can dock with mainstream market platform software • Lightweight and small design, with a diameter of 125mm and a height of 210mm. • The weight of a single ptz camera does not exceed 2.8KG • Product integrated structure design, protection level up to IP67 • 360° continuous rotation, vertical -30° to 90°, support cruise, line scan, preset position, guard position, etc. • Horizontal control speed 100°/sec, vertical control speed 60°/sec • 20x optical zoom, 2 Megapixel high-definition movement • 4 high-power infrared lamps, infrared night vision distance of 60-80 meters • Built-in 4G antenna, support 4G full Netcom remote wireless video transmission, real-time smooth image • Support mobile phones and PC to access the control the camera through the client • Support TF card storage, support 256G • Support GPS/Beidou positioning (optional) • Support two-way voice intercom, support hand microphone intercom (optional hand microphone) • Magnetic composite suction cup design, built-in large capacity lithium battery, working time more than 9 hours • Charging standard DC12.6V/3A • Equipped with tripod, mounting plate, safety box • Application scenarios: wireless, portable, 4G transmission video surveillance
	360-PRO-B (black)	
HD Analog 4 in 1 PTZ Camera		
	PART NUMBER	FEATURES
	HD-A4-PTZ	<ul style="list-style-type: none"> • 4 in 1(AHD/TVI/CVI/CVBS) IR high speed dome camera • 3" half metal case, IP66 protection grade • IR distance: 20m-30m • Wall mount or Ceiling mount • Pan speed: 0°/s ~ 80°/s, Tilt speed:0°/s ~ 80°/s • Support 220 presets, AB line scan, park function. • Change video signal mode via DIP switch • 1 year warranty • CE & RoHS certificate • 18pcs/ctn, weight:16Kg/ctn
	PTZ-Bracket	
HD IP PTZ Camera		
	PART NUMBER	FEATURES
	HD-IP-PTZ	<ul style="list-style-type: none"> • 1/2.8" 2.0M HIS3516E+Sony307 CMOS(H.265) 1080P, 4x optical zoom • 2.8mm-12mm lens • 3"half metal case, IP66 protection grade • IR distance: 20m-30m • Wall mount and ceiling mount • Built in HIKVISION &Xiongmai Private protocol • View camera via HCMS, Web interface,NVR, Mobile phone • App application: Hisee or HIK-Connect • CMS: HCMS or iVMS-4200 or iVMS-4500 • Support POE function • Standard Onvif 2.4 version • Pan speed: 0°/s ~ 80°/s, Tilt speed:0°/s ~ 80°/s • Support 220 presets, AB line scan and park function. • 1 year warranty • CE & RoHS certificate • 18pcs/ctn, weight:16Kg/ctn



Our Vision is Your Vision

The Worlds Finest
Marine Displays • Tablets • Computers & Accessories



Wherever Life's Adventures Take You...

Seatronx Is There!

On our website you can discover more about marine gps navigation.