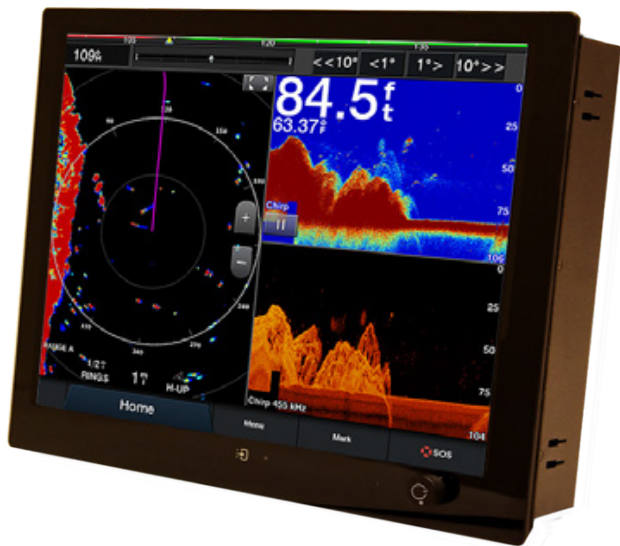




## SEATRONX Pairs With GARMIN

The Ultimate BlackBox Navigation Solution

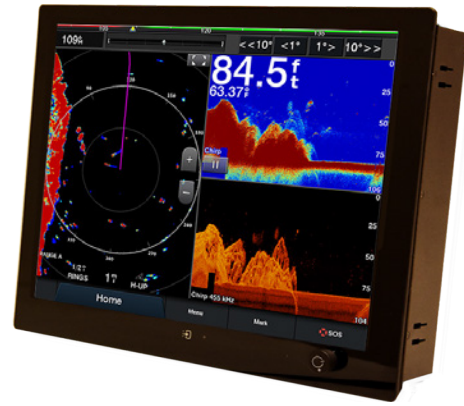
Garmin and Seatronx have paired together to bring you the ultimate blackbox navigation solution using Garmin's fully integrated GPSMAP® 8700 processor and Seatronx SRT series displays.



The GPSMAP 8700 black box bundle integrates Garmin's world renowned chartplotting capabilities with expandable options to Garmin's sonar technologies, autopilot, engine data, multimedia, connected services and apps, on the full range of Seatronx SRT series displays.



Automatically sync your personal preferences and user data for all networked chartplotters across multiple helms. Everything you need can conveniently be found at your fingertips. Connectivity to NMEA 2000® networking and the Garmin Marine Network allows you to easily build your full marine electronics suite to your exact specifications. From radar and autopilots to cameras, instruments and forward-looking sonar you will have complete control that is accessible across multiple screens. Connecting to the Seatronx SRT series displays allows a superior clear image quality in a clean and sleek, glassbridge design. The SRT offers 4 video inputs that eliminate the need for additional switching systems and incorporate Garmin's OneHelm™ system that provides the ability to connect third-party manufactured onboard marine products to bring full control of systems — such as digital switching, lighting, stabilization systems and more.



## GARMIN GPSMAP® 8700

- Compatible with Seatronx VSRT series Sunlight Readable Touchscreen Displays
- Full support for the range of Garmin black box sonar products, including the GSD™ 26 CHIRP Professional Sonar Module, Panoptix™ LiveScope system and the entire Panoptix™ all-seeing sonar line (all transducers sold separately)
- Integrates internal sonar sharing, multiple black box sonars, Ultra High-Definition ClearVü and SideVü scanning sonars, autopilot, connected services, apps, engine data and more
- Pairs with external GPS 19x 10 Hz GPS and GLONASS receiver to update position and heading 10 times per second
- Preloaded worldwide basemap; compatible with BlueChart® g3 charts featuring integrated Navionics® data and Auto Guidance technology

## SEATRONX SRT SERIES DISPLAYS

- Cost Effective Glass Bridge Displays
- Up to 1500 Nits Sunlight Readable
- Wide Dimming Range
- IEC60945 Certified
- NEMA 4, IP65 Sealed Front Panel
- HDMI, DVID, VGA & Composite Video Input
- Front Brightness Controls
- Standard PCAP Touch Screen
- HDCP Compliant
- Low Power LED Backlighting

## BUNDLE MODELS AVAILABLE THROUGH AUTHORIZED DISTRIBUTORS

<b>8700-SRT10</b>	10" SRT Monitor and GPSMAP® 8700 BlackBox
<b>8700-SRT12</b>	12" SRT Monitor and GPSMAP® 8700 BlackBox
<b>8700-SRT15</b>	15" SRT Monitor and GPSMAP® 8700 BlackBox
<b>8700-SRT15W</b>	15" Wide SRT Monitor and GPSMAP® 8700 BlackBox
<b>8700-SRT17</b>	17" SRT Monitor and GPSMAP® 8700 BlackBox
<b>8700-SRT18.5</b>	18.5" SRT Monitor and GPSMAP® 8700 BlackBox
<b>8700-SRT19</b>	19" SRT Monitor and GPSMAP® 8700 BlackBox
<b>8700-SRT21</b>	21" SRT Monitor and GPSMAP® 8700 BlackBox
<b>8700-SRT24</b>	24" SRT Monitor and GPSMAP® 8700 BlackBox
<b>8700-SRT24W</b>	24" Wide SRT Monitor and GPSMAP® 8700 BlackBox



# SRT/PHT Series

## LCD Marine/Industrial Displays

*Sunlight Readable Touchscreen (SRT) & Pilot House Touchscreen (PHT)*  
Displays Designed for the Industrial and Marine Industries.



10" Display  
SRT/PHT-10

12" Display  
SRT/PHT-12

15" Display  
SRT/PHT-15

15" Wide  
SRT/PHT-15W

17" Display  
SRT/PHT-17

18.5" Wide  
SRT/PHT-185W

19" Display  
SRT/PHT-19

21" Wide  
SRT/PHT-21W

24" Display  
SRT/PHT-24

24" Wide  
SRT/PHT-24W

27" Wide  
SRT/PHT-24W

- Cost Effective Glass Bridge Displays
- Up to 1500 Nits Sunlight Readable
- Wide Dimming Range
- IEC60945 Certified
- NEMA 4, IP65 Sealed Front Panel

- HDMI, DVID, VGA & Composite Video Input
- Front Brightness Controls
- Standard PCAP Touch Screen
- HDCP Compliant
- Low Power LED Backlighting



Our Vision is Your Vision



# Standard Displays



Seatronx Part Numbers:	SRT-10 &PHT-10	SRT-12 & PHT-12	SRT-15 & PHT-15	SRT-17 &PHT-17	SRT-19 &PHT-19	SRT-24 & PHT-24
FEATURES						
Diagonal (active area) Inch	10.4	12.1	15.0	17.0	19.0	24.1
Native Resolution (Pixels)	1024 x 768	1024x768	1024x 768	1280x1024	1280x 1024	1920x 1200
Colors	16.2M	16.2M	16.2M	16.7M	16.7M	16.7M
Contrast Ratio	1200	700	700	1000	1000	1000
Brightness Sunlight Readable (SRT)	1500	1500	1800	1500	1500	1000
Brightness Pilot House (PHT)	500	700	700	350	300	350
Viewing Angle (left, right)	89, 89	80,80	80, 80	85,85	89, 89	89, 89
Viewing Angle (up, down)	89, 89	80,80	60, 80	80,80	89, 89	89, 89
Backlight Lifetime (Hrs)	50000	50000	50000	50000	50000	50000
Backlight Dimming	0 - max	0 - max	0 - max	0 - max	0 - max	0 - max
Input terminal x1 HDCP HDMI	HDMI,DVI,VGA, Comp	HDMI,DVI,VGA, Comp	HDMI,DVI,VGA, Comp	HDMI,DVI,VGA, Comp	HDMI,DVI,VGA, Comp	HDMI,DVI,VGA, Comp
Power Source	9-34V + and -	9-34V + and -	9-34V + and -	9-34V + and -	9-34V + and -	9-34V + and -
Voltage Converter	9-34V (isolated)	9-34V (isolated)	9-34V (isolated)	9-34V (isolated)	9-34V (isolated)	9-34V (isolated)
Power Consumption (AMPS @ 24VDC)	SRT 2.5 / PHT 1.5	SRT 2.5 / PHT 1.5	SRT 2.8 / PHT 1.5	SRT 3 / PHT 1.5	SRT 3.5 / PHT 1.5	SRT 3.5 / PHT 1.8
Inlet Plug DC Power	Screw Terminal	Screw Terminal	Screw Terminal	Screw Terminal	Screw Terminal	Screw Terminal
Dimensions Front (w x h x d mm)	262.6 x 227.6 x 58mm (10.34 x 8.960 x 2.28)	301.8 x 257.3 x 58mm (11.88 x 10.13 x 2.28)	363.1 x 305.1 x 58mm (14.295 x 12.02 x 2.28)	396.9 x 342 x 58mm (15.62 x 13.46 x 2.28)	432.6 x 377.2 x 58mm (17.03 x 14.85 x 2.28)	587 x 404.2 x 58mm (23.11 x 15.91 x 2.28)
Cutout Dimensions (w x h x d mm)	244.4 x 209.4 x 61mm (9.623 x 8.224 x 2.40)	283.6 x 239.1 x 61mm (11.16 x 9.43 x 2.40)	345.1 x 287.1 x 61mm (13.58 x 11.30 x 2.40)	378.9 x 324 x 61mm (14.92 x 12.75 x 2.40)	414.6 x 359.2 x 61mm (16.32 x 14.14 x 2.40)	569 x 386.2 x 61mm (22.41 x 15.20 x 2.40)
Sealing Front	ip68 with potentiometer	ip68 with potentiometer	ip68 with potentiometer	ip68 with potentiometer	ip68 with potentiometer	ip68 with potentiometer
Mounting	panel mount/Vesa	panel mount/Vesa	panel mount/Vesa	panel mount/Vesa	panel mount/Vesa	panel mount/Vesa
Operating Temperature (°C)	-30 to 70	-30 to 85	-30 to 85	-30 to 85	0 to 70	0 to 50
Storage Temperature (°C)	-30 to 80	-30 to 80	-30 to 85	-30 to 85	-20 to 70	-20 to 60
Parameter Adjustment	front knob and osd at backside	front knob and osd at back-side	front knob and osd at backside	front knob and osd at backside	front knob and osd at backside	front knob and osd at backside
Power On/Off	front knob and osd at backside	front knob and osd at back-side	front knob and osd at backside	front knob and osd at backside	front knob and osd at backside	front knob and osd at backside
Projected Capacitive Touch	YES	YES	YES	YES	YES	YES
Optical Bonding	YES	YES	YES	YES	YES	YES
Remote Control	Optional	Optional	Optional	Optional	Optional	Optional

# Wide Screen Displays



Seatronx Part Numbers:	SRT-15W & PHT-15W	SRT-185W & PHT-185W	SRT-21W & PHT-21W	SRT-24W-1080 & PHT-24W-1080	SRT-27W-1080 & PHT-27W-1080
FEATURES					
Diagonal (active area) Inch	15.6	18.5	21.5	24.0	27.0
Native Resolution (Pixels)	1920x1080	1920 x 1080	1920 x1080	1920 x 1080	1900 x 1080
Colors	16.2M	16.7M	16.7	16.7M	16.7M
Contrast Ratio	1500	1000	5000	1000	1000
Brightness Sunlight Readable (SRT)	1500	1500	1000	1000	1000
Brightness Pilot House (PHT)	400	300	300	350	350
Viewing Angle (left, right)	89,89	89, 89	89, 89	89, 89	89, 89
Viewing Angle (up, down)	89,89	89, 89	89, 89	89, 89	89, 89
Backlight Lifetime (Hrs)	50000	50000	50001	50000	50000
Backlight Dimming	0 - max	0 - max	0 - max	0 - max	0 - max
Input terminal x1 HDCP HDMI	HDMI,DVI,VGA, Comp	HDMI,DVI,VGA, Comp	HDMI,DVI,VGA, Comp	HDMI,DVI,VGA, Comp	HDMI,DVI,VGA, Comp
Power Source	9-34V + and -	9-34V + and -	9-34V + and -	9-34V + and -	9-34V + and -
Voltage Converter	9-34V (isolated)	9-34V (isolated)	9-34V (isolated)	9-34V (isolated)	9-34V (isolated)
Power Consumption (AMPS @ 24VDC)	SRT 3.2 / PHT 2	SRT 3.5 / PHT 1.5	SRT 3.5 / PHT 1.8	SRT 3.5 / PHT 1.8	SRT 3.5 / PHT 1.8
Inlet Plug DC Power	Screw Terminal	Screw Terminal	Screw Terminal	Screw Terminal	Screw Terminal
Dimensions Front (w x h x d mm)	403.8 x 272.5 x 58 mm (15.89 x 10.72 x 2.28)	466.2 x 307.4 x 61mm (18.35 x 12.1 x 2.40)	538 x 345.4 x 58mm (22.95 x 13.59 x 2.28)	598.6 x 382.8 x 61mm (23.57 x 15.07 x 2.40)	660.6 x 418.0 x 61mm (26.01 x 16.46 x 2.40)
Cutout Dimensions (w x h x d mm)	385.8 x 254.5 x 61 mm (15.18 x 10.01 x 2.40)	448.2 x 289.4 x 61mm (17.65 x 11.39 x 2.40)	520 x 327.4 x 61mm (20.47 x 12.88 x 2.40)	580.6 x 364.8 x 61mm (22.86 x 14.36 x 2.40)	642.6 x 400 x 61mm (25.3 x 15.75 x 2.40)
Sealing Front	ip68 with potentiometer	ip68 with potentiometer	ip68 with potentiometer	ip68 with potentiometer	ip68 with potentiometer
Mounting	panel mount/Vesa	panel mount/Vesa	panel mount/Vesa	panel mount/Vesa	panel mount/Vesa
Operating Temperature (°C)	-20 to 75	0 to 70	to 50	0 to 50	0 to 50
Storage Temperature (°C)	-20 to 80	-20 to 70	-20 to 60	-20 to 60	-20 to 60
Parameter Adjustment	front knob and osd at backside	front knob and osd at backside	front knob and osd at backside	front knob and osd at backside	front knob and osd at backside
Power On/Off	front knob and osd at backside	front knob and osd at backside	front knob and osd at backside	front knob and osd at backside	front knob and osd at backside
Projected Capacitive Touch	YES	YES	YES	YES	YES
Optical Bonding	YES	YES	YES	YES	YES
Remote Control	Optional	Optional	Optional	Optional	Optional

SRT Series Sunlight Readable Touch Screen Displays	
Part #:	Description :
SRT-10	10" 1024x768 Sunlight readable touch screen display, 9-36vdc, 1 HDMI, 1 DVDI, 1 VGA, 1 Composite, wide dimming range
SRT-12	12" 1024x768 Sunlight readable touch screen display, 9-36vdc, 1 HDMI, 1 DVDI, 1 VGA, 1 Composite, wide dimming range
SRT-15	15" 1024x768 Sunlight readable touch screen display, 9-36vdc, 1 HDMI, 1 DVDI, 1 VGA, 1 Composite, wide dimming range
SRT-17	17" 1280x1024 Sunlight readable touch screen display, 9-36vdc, 1 HDMI, 1 DVDI, 1 VGA, 1 Composite, wide dimming range
SRT-19	19" 1280x1024 Sunlight readable touch screen display, 9-36vdc, 1 HDMI, 1 DVDI, 1 VGA, 1 Composite, wide dimming range
SRT-24	24" 1920x1200 Sunlight readable touch screen display, 9-36vdc, 1 HDMI, 1 DVDI, 1 VGA, 1 Composite, wide dimming range
<b>Wide Screen</b>	
SRT-15W	15" Wide Screen 1920x1080 Sunlight readable touch screen display, 9-36vdc, 1 HDMI, 1 DVDI, 1 VGA, 1 Composite, wide dimming range
SRT-185W	18.5" Wide Screen 1920x1200 Sunlight readable touch screen display, 9-36vdc, 1 HDMI, 1 DVDI, 1 VGA, 1 Composite, wide dimming range
SRT-21W	21" Wide Screen 1920x1080 Sunlight readable touch screen display, 9-36vdc, 1 HDMI, 1 DVDI, 1 VGA, 1 Composite, wide dimming range
SRT-24W-1080	24" Wide Screen 1920x1080 Sunlight readable touch screen display, 9-36vdc, 1 HDMI, 1 DVDI, 1 VGA, 1 Composite, wide dimming range
SRT-27W-1080	27" Wide Screen 1900x1080 Sunlight readable touch screen display, 9-36vdc, 1 HDMI, 1 DVDI, 1 VGA, 1 Composite, wide dimming range
PHT Series Pilot House Touch Screen Displays	
Part #:	Description :
PHT-12	12" 1024x768 Pilothouse touch screen display, 9-36vdc, 1 HDMI, 1 DVDI, 1 VGA, 1 Composite, wide dimming range
PHT-15	15" 1024x768 Pilothouse touch screen display, 9-36vdc, 1 HDMI, 1 DVDI, 1 VGA, 1 Composite, wide dimming range
PHT-17	17" 1280x1024 Pilothouse touch screen display, 9-36vdc, 1 HDMI, 1 DVDI, 1 VGA, 1 Composite, wide dimming range
PHT-19	19" 1280x1024 Pilothouse touch screen display, 9-36vdc, 1 HDMI, 1 DVDI, 1 VGA, 1 Composite, wide dimming range
PHT-24	24" 1920x1200 Pilothouse touch screen display, 9-36vdc, 1 HDMI, 1 DVDI, 1 VGA, 1 Composite, wide dimming range
<b>Wide Screen</b>	
PHT-15W	15" Wide Screen 1920x1080 Pilothouse touch screen display, 9-36vdc, 1 HDMI, 1 DVDI, 1 VGA, 1 Composite, wide dimming range
PHT-185W	18.5" Wide Screen 1920x1200 Pilothouse touch screen display, 9-36vdc, 1 HDMI, 1 DVDI, 1 VGA, 1 Composite, wide dimming range
PHT-21W	21" 1920x1080 Pilothouse touch screen display, 9-36vdc, 1 HDMI, 1 DVDI, 1 VGA, 1 Composite, wide dimming range
PHT-24W-1080	24" Wide Screen 1920x1080 Pilothouse touch screen display, 9-36vdc, 1 HDMI, 1 DVDI, 1 VGA, 1 Composite, wide dimming range
PHT-27W-1080	27" Wide Screen 1900x1080 Pilothouse touch screen display, 9-36vdc, 1 HDMI, 1 DVDI, 1 VGA, 1 Composite, wide dimming range
Low Cost AC Powered PH Series Pilot House NON TOUCH Displays	
Part #:	Description :
PH-15-AC	15" 1024x768 Pilothouse display, AC 110 Power Supply Included , 1 HDMI, 1 DVDI, 1 VGA, 1 Composite, wide dimming range
PH-17-AC	17" 1280x1024 Pilothouse display, 12VDC AC 110 Power Supply Included , 1 HDMI, 1 DVDI, 1 VGA, 1 Composite, wide dimming range
PH-19-AC	19" 1280x1024 Pilothouse display, AC-110 Power Supply Included , 1 HDMI, 1 DVDI, 1 VGA, 1 Composite, wide dimming range
PH-24-AC	24" 1920x1200 Pilothouse display, AC 110 Power Supply Included , 1 HDMI, 1 DVDI, 1 VGA, 1 Composite, wide dimming range

**Controller Options:**

**PHT-SRT-CTL Universal Control**  
For Up to 12 SRT/PHT Displays Power, Dimming and Input Selection



**SCC - Seatronx Command Control**  
7" touchscreen panel premier modular digital switching solution for any multi-display projects.



If you're looking for quality marine gps navigation, visit our website.