

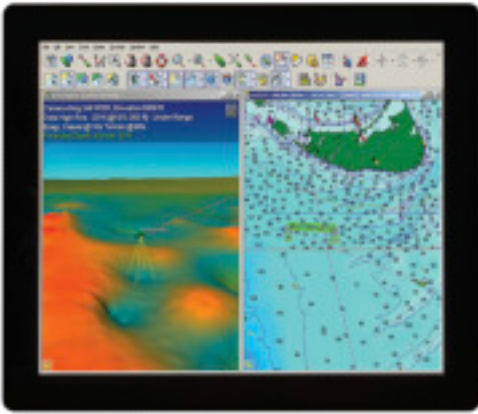


# VSRT Series

## *Sunlight Readable Marine Displays*

- 1000+ Nits Sunlight Readable
- Backlight Dimming Range 0 to Max.
- Red Night Mode Setting
- IPS Technology
- Sealed Front Panel
- 9 Inputs: 2 x DVID, 2 x VGA, 1 x DP, 4 Composite
- Parameter Adjustments Via Remote Keypad
- Standard PCAP Touch Screen
- HDCP Compliant
- Remote Control Via RS232 or IP
- 9 to 36 VDC Power
- Wide Operating Temperature





FRONT VIEW



REAR VIEW



KEYPAD INCLUDED

Seatronx Part Numbers	VSRT-15	VSRT-17	VSRT-19	VSRT-21W
FEATURES				
Diagonal (active area) Inch	15.0	17.0	19.0	21.5
Native Resolution (Pixels)	1024x 768	1280x1024	1280x 1024	1920x1080
Colors	16.2M	16.7M	16.7M	16.7
IPS Technology	YES	YES	YES	YES
Contrast Ratio	2000:1	1000:1	1500:1	5000:1
Sunlight Readable	1000+	1000+	1000+	1000+
Viewing Angle (left, right)	89,89	89,89	89, 89	89, 89
Viewing Angle (up, down)	89,89	89,89	89, 89	89, 89
Backlight Lifetime (Hrs)	50000+	50000+	50000+	50000+
Backlight Dimming	0 - max	0 - max	0 - max	0 - max
Inputs	2xDVID, 2xVGA, 1xDP,4xComp	2xDVID, 2xVGA, 1xDP,4xComp	2xDVID, 2xVGA, 1xDP,4xComp	2xDVID, 2xVGA, 1xDP,4xComp
Power Source	9-36V + and -	9-36V + and -	9-36V + and -	9-36V + and -
Voltage converter	9-36V (isolated)	9-36V (isolated)	9-36V (isolated)	9-36V (isolated)
Power consumption AMPS at 24vdc	2.8	3	3.5	3.5
Inlet plug dc power	Screw Terminal	Screw Terminal	Screw Terminal	Screw Terminal
Dimensions front (w x h x d) mm (inches)	365.02 x 287.21 x 76.20mm (14.371 x 11.328 x 3)	399.78 x 331.91 x76.20mm (15.70 x 13.039 x 3)	437.35 x 362.10 x 76.20mm (17.219 x 14.256 x 3)	532.92 x 328.92 x 76.20mm (20.981 x 12.950 x 3)
Cutout Dimensions (w x h x d) mm (inches)	350.37 x 274.61 x 76mm (13.794 x 10.81 x 2.992)	384.24 x 318.69 x 76.20mm (15.127x 12.547 x 3)	430.04 x 356.22 x 76.20mm (16.931 x 14.024 x 3)	518.39 x 315.03 x 76.20mm (20.409 x 12.403 x 3)
Sealing front	IP65	IP65	IP65	IP65
Mounting	Panel Mount	Panel Mount	Panel Mount	Panel Mount
Operating temperature (°C)	-20 to +70	-10 to 70	-10 to 70	0 to +60
Storage temperature (°C)	-30 to 80	-20 to 80	-20 to 80	-20 to 70
Parameter adjustment	Remote Keypad	Remote Keypad	Remote Keypad	Remote Keypad
Power on/off	Remote Keypad	Remote Keypad	Remote Keypad	Remote Keypad
Projected Capacitive touch	YES	YES	YES	YES
Optical bonding	YES	YES	YES	YES
Remote control VIA RS232 or IP	YES	YES	YES	YES



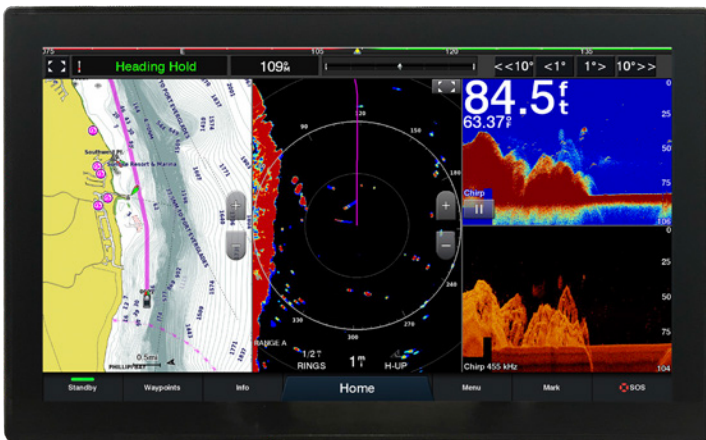


## SEATRONX Pairs With GARMIN

The Ultimate BlackBox Navigation Solution

Garmin and Seatronx have paired together to bring you the ultimate blackbox navigation solution using Garmin's fully integrated GPSMAP® 8700 processor and Seatronx premier VSRT series displays.

The GPSMAP 8700 black box bundle integrates Garmin's world renowned chartplotting capabilities with expandable options to Garmin's sonar technologies, autopilot, engine data, multimedia, connected services and apps, on the full range of Seatronx premier VSRT series glassbridge displays.



Automatically sync your personal preferences and user data for all networked chartplotters across multiple helms. Everything you need can conveniently be found at your fingertips. Connectivity to NMEA 2000® networking and the Garmin Marine Network allows you to easily build your full marine electronics suite to your exact specifications. From radar and autopilots to cameras, instruments and forward-looking sonar you will have complete control that is accessible across multiple screens. Connecting to the Seatronx VSRT series displays allows a superior clear image quality in a clean and sleek, glass-bridge design. The V-Series offers an amazing 8 inputs that eliminate the need for additional switching systems and incorporate Garmin's OneHelm™ system that provides the ability to connect third-party manufactured onboard marine products to bring full control of systems — such as digital switching, lighting, stabilization systems and more.



## GARMIN GPSMAP® 8700

- Compatible with Seatronx VSRT series Sunlight Readable Touchscreen Displays
- Full support for the range of Garmin black box sonar products, including the GSD™ 26 CHIRP Professional Sonar Module, Panoptix™ LiveScope system and the entire Panoptix™ all-seeing sonar line (all transducers sold separately)
- Integrates internal sonar sharing, multiple black box sonars, Ultra High-Definition ClearVü and SideVü scanning sonars, autopilot, connected services, apps, engine data and more
- Pairs with external GPS 19x 10 Hz GPS and GLONASS receiver to update position and heading 10 times per second
- Preloaded worldwide basemap; compatible with BlueChart® g3 charts featuring integrated Navionics® data and Auto Guidance technology

## SEATRONX VSRT SERIES DISPLAYS

- 1000+ Nits Sunlight Readable
- Available Screen Sizes: 15", 17", 19", 21" wide, 24" wide
- Backlight Dimming Range 0 to Max
- Red Night Mode Setting
- IPS Technology
- Sealed Front Panel
- 8 Inputs: 2 x DVID, 1 x VGA, 1 x DP, 4 Composite
- Parameter Adjustments Via Remote Keypad
- Standard PCAP Touch Screen
- HDCP Compliant
- Remote Control Via RS232 or IP
- 9 to 36 VDC Power
- Wide Operating Temperature

## BUNDLE MODELS AVAILABLE THROUGH AUTHORIZED DISTRIBUTORS

<b>8700-VSRT15</b>	15" VSRT Monitor and GPSMAP® 8700 BlackBox
<b>8700-VSRT17</b>	17" VSRT Monitor and GPSMAP® 8700 BlackBox
<b>8700-VSRT19</b>	19" VSRT Monitor and GPSMAP® 8700 BlackBox
<b>8700-VSRT21</b>	21"W VSRT Monitor and GPSMAP® 8700 BlackBox
<b>8700-VSRT24</b>	24"W VSRT Monitor (available Spring 2020) and GPSMAP® 8700 BlackBox







# Monitor Management Interface for VSRT Series

## Features

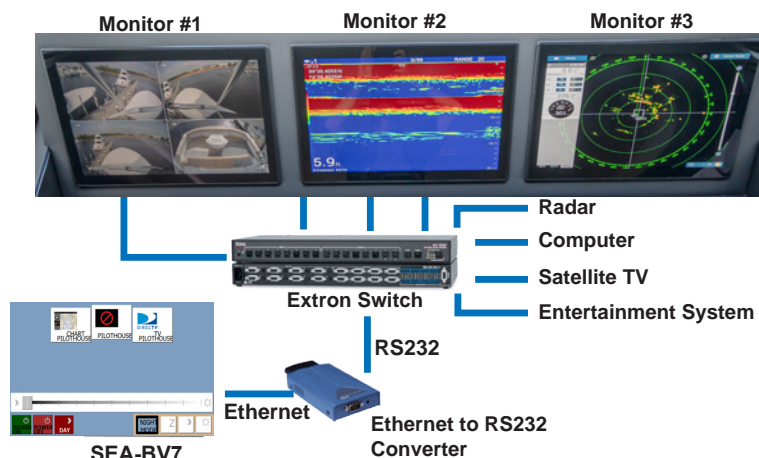
- Manage multiple VSRT monitors with one touchscreen display
- 7.0" Color TFT display
- Extron switcher compatibility (coming soon)
- Simplifies Monitor operations
- User customizable
- Easy to install Ethernet connections.

## Description

The SEA-BV7 panel makes you the master of the bridge. It is easy to set up for your unique tastes and easy to use. The touchscreen allows you issue commands to multiple VSRT Monitors with the touch of a button. Individual monitors can be adjusted and controlled as desired. Support for Extron switchers makes for a wide variety of viewing possibilities. With a touch or two, the information you need to see is readily available.

The SEA-BV7 has a reliable embedded Linux operating system. It controls multiple displays via Ethernet connections. In most cases the interface program can be tailored to meet your viewing requirements and communicate with optional equipment.

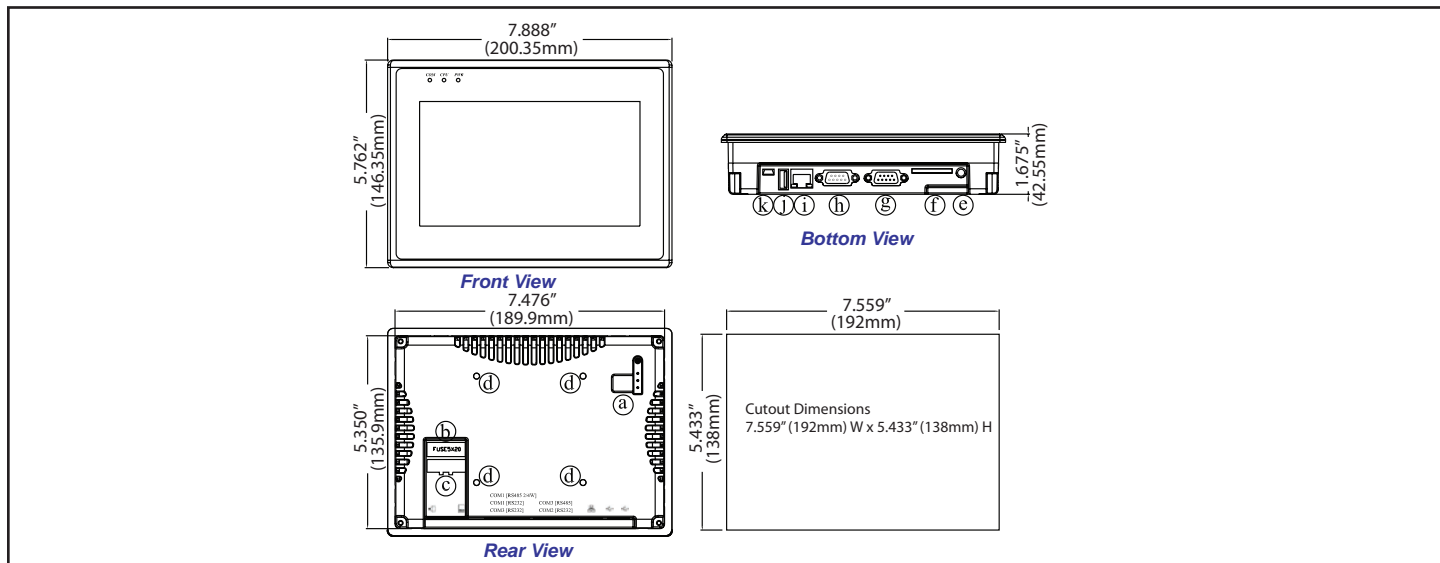
## Typical Application with Extron Switch



## Extron Connections

Connections to an Extron switcher are through the same Ethernet network as the monitors. For Extron units without built in Ethernet ports, An Extron Ethernet to Serial converter is needed to connect to the Extron's Serial port.

## Dimensions





Home - Startup screen

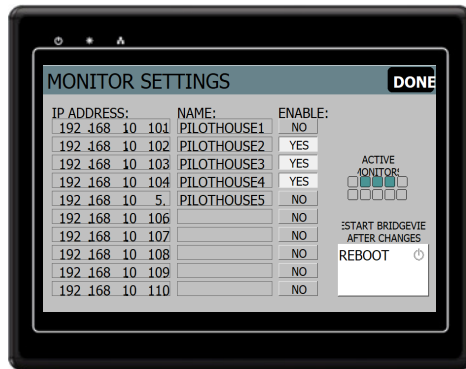
- Power all monitors ON and OFF
- Change all monitors between Night (Red mode) and Day Mode
- Change brightness of all monitors
- Access Monitors individually
- Access Extron Video Switcher (invisible if Extron option is disabled),
- Changes the SEA-BV7 from day to night mode (Hold the SEA-BV7 button down 5 seconds to access setup screens)



Monitors - Select a monitor to change its display. Use Preset buttons on bottom to display predefined configuration.



Monitor Screen - Press buttons to change screen input signal. Press and hold a button to set it up.



SEA-BV7 Settings - Configure the SEA-BV7 and set it to match your system's network. Language, IP addresses, Extron option select and Monitor Menu access available.

LCD DISPLAY	
Display type	TFT color LCD
Display size (diagonal)	7,0"
Max. Colors	65536
Resolution	800 x 480
Viewing angle (°)	70/50/70/70 (T/B/R/L)
Luminance (cd/m <sup>2</sup> )	300
Backlight	LED
Backlight Life	30,000 hrs.
Contrast ratio	500:1

## Touchscreen

- Type: 4-wire, analog resistive
- Resolution: continuous
- Light transmission: above 80%
- Life: 1 million activation minimum

## How To Order:

Example                      SEA-BV    7

Series: \_\_\_\_\_

SEA-BV7 Interface

Display Size: \_\_\_\_\_

7= 7.0"

## Environmental Specifications

- Operating temperature: 0° ~ 45°C (32° ~ 113°F)
- Relative humidity: 10% ~ 90% @ 40°C, non-condensing
- Shock (operation): 10 to 25Hz(X,Y,Z direction 2G 30minutes)
- EMI: Complies with FCC class A
- CE: Complies with EN50081-2 and EN50082-2 standards
- Front panel meets NEMA4 / IP65