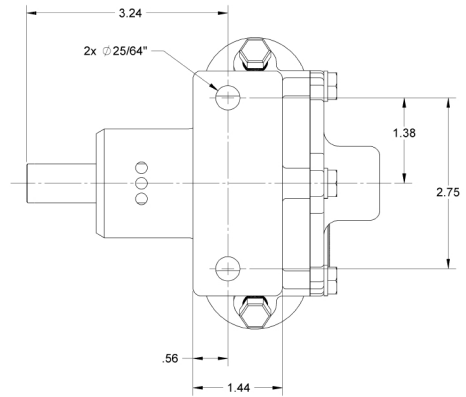
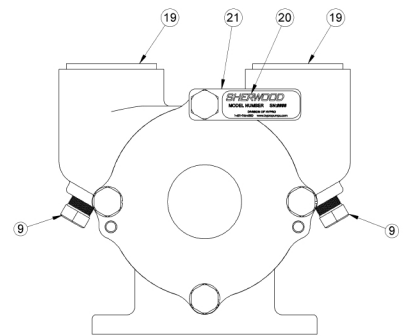
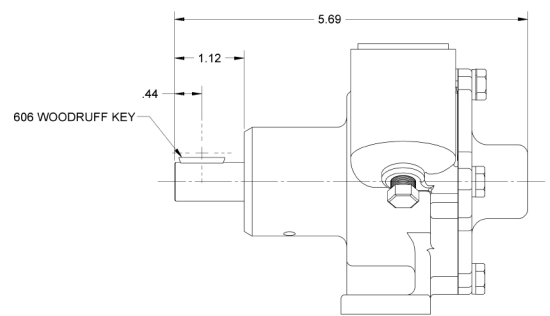
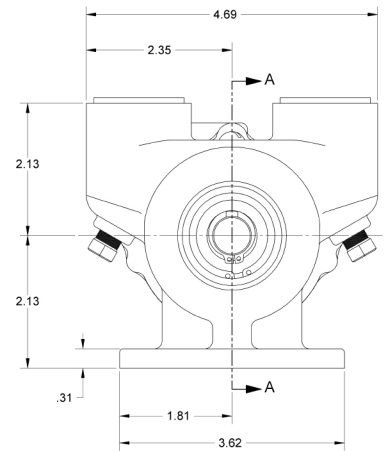
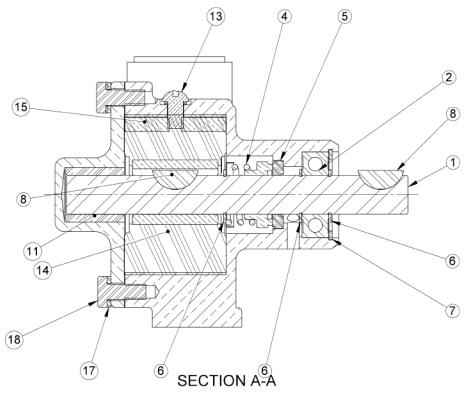
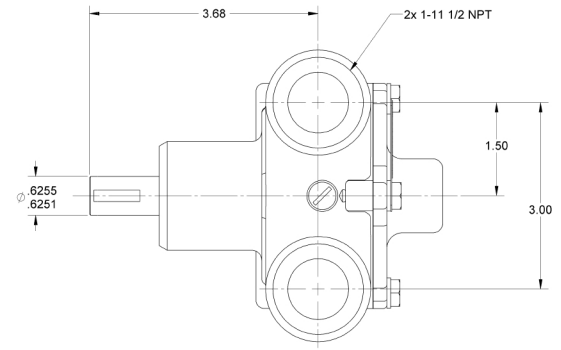


ITEM NO.	PART NUMBER	DESCRIPTION	QTY.
1	18502	SHAFT	1
2	04257	BALL BEARING	1
3	18501	BODY - MACH	1
4	18743	WATER SEAL - TYPE 21	1
5	10926	SEAL SEAT	1
6	04258	EXT. RETAINING RING	3
7	04259	INT. RETAINING RING	1
8	04432	WOODRUFF KEY	2
9	00336	PLUG	2
10	01311	DOWEL PIN	2
11	06333	BUSHING - GRAPHITE	1
12	10182	COVER	1
13	10515C	CAM SCREW ASSY	1
14	10615	IMPELLER	1
15	10929	CAM	1
16	10931	GASKER - FIBRE	1
17	12710	LOCKWASHER	4
18	17485	CAP SCREW 1/4-20	4
19	18390	PLUG - PLASTIC	2
20	23083	LABEL	1
21	13285	TAG	1

- NOTES:
1. APPLY BEAD OF PERMATLEX AROUND CAM THREADED HOLE PRIOR TO ASSEMBLY. (ITEM 13).
  2. USE PAC-EASE OR EQUIV. WHEN INSTALLING WATER SEAL. ( ITEM 4).
  3. USE COOLANT TO AID IN INSTALLATION OF RUBBER IMPELLER, (ITEM 14).
  4. TORQUE CAP SCREW 1/4-20, (ITEM 18), TO 5-8 FT/LBS.
  5. PRESSURE TEST PUMP TO 20-30 PSI
  6. PRING "R102" AND "DATE CODE" ON LABEL, (ITEM 20).



<b>SHERWOOD</b>		REPLACES PART NO.	
		DWG BY:	ML
		CHECKED BY:	AVB
DRAWING BASED ON ASME Y14.5M-1994 (DO NOT SCALE PRINT)		SCALE:	1:1
REV. ECN.		DESCRIPTION	DATE
REVISIONS		PART DESCRIPTION	PART NUMBER
		RUBBER IMPELLER PUMP ASSY	R102

Looking for dependable boat parts and hardware? Rely on Sherwood Pumps for quality and long-lasting products.