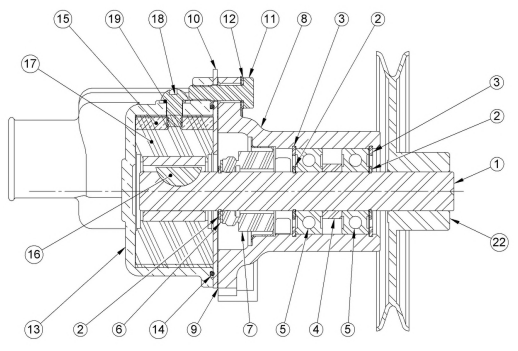
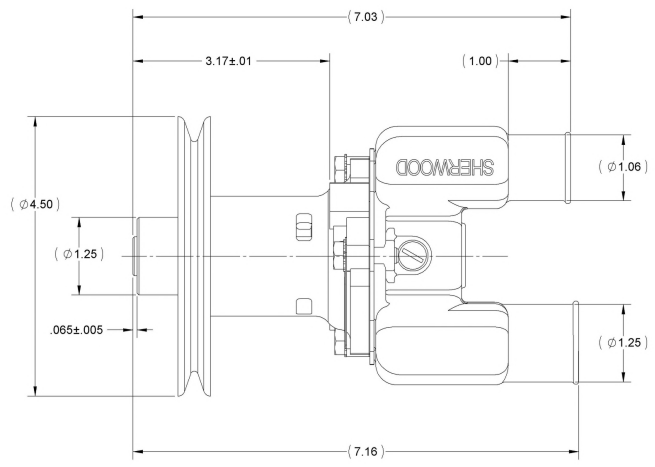


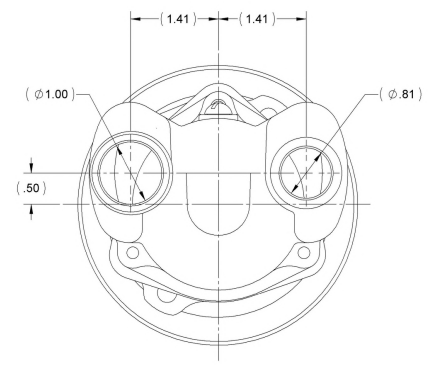
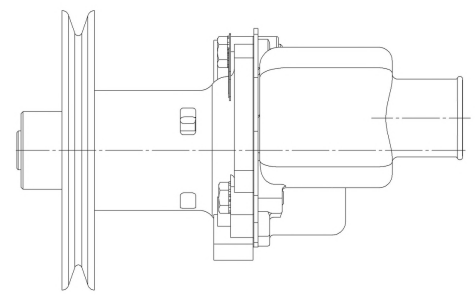
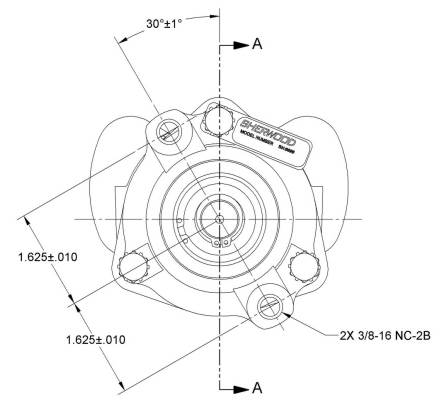
ITEM NO.	PART NUMBER	DESCRIPTION	QTY.
1	13363	SHAFT	1
2	04258	EXT. RETAINING RING	3
3	04259	INT. RETAINING RING	2
4	05133	SPACER	1
5	12211	BALL BEARING	2
6	04264	FLAT WASHER	1
7	12314	TYPE 6A SEAL/SEAT ASSY	1
8	21759	BODY - MACHINED	1
9	12855	GASKET	1
10	12856	WEAR PLATE	1
11	12857	1/4-20 HHCS	3
12	21757	LOCKWASHER EXT TOOTH	3
13	21151	HOUSING	1
14	12231	O-RING	1
15	15883	CAM	1
16	04432	WOODRUFF KEY	1
17	09959	RUBBER IMPELLER	1
18	19995	SCREW 1/4-20 ROUND HD	1
19	19996	CAM WASHER	1
20	13285	TAG	1
21	23083	LABEL	1
22	21175	PULLEY	1

NOTES:

1. APPLY BEAD OF PERMATEX AROUND THREADED HOLE IN CAM PRIOR TO ASSEMBLY, (ITEM 15).
 2. USE WATER ONLY WHEN INSTALLING SEAL/SEAT ASSY, (ITEM 7).
 3. USE COOLANT TO AID IN INSTALLATION OF RUBBER IMPELLER, (ITEM 17).
 4. TORQUE 1/4-20 HHCS TO 5 - 8 FT/LBS, (ITEM 11).
 5. PRESSURE TEST PUMP TO 20 - 30 PSI.
 6. PRINT ON LABEL, (ITEM 21).
- G9903
DATE CODE



SECTION A-A



SHERWOOD A Div. of Hypro Corporation A PENTAIR COMPANY		REPLACES PART NO.	REV
		DWG BY: EW	DATE: 5/31/1994
DRAWING BASED ON ASME Y14.8M-1994 [DO NOT SCALE PRINT]		CHECKED BY: TLG	DATE: 5/31/1994
THIRD ANGLE PROJECTION SCALE: 1:1 SHEET NUMBER: 1 OF 1		THIS DRAWING IS THE PROPERTY OF HYPRO AND HYPRO'S WRITTEN AUTHORIZATION MUST NOT BE COPIED OR COMMUNICATED. PART NUMBER: G9903	
C ADP B #POT A EDPW REV. ECH	REMOVED 12256 SEAT ASSY. REDRAWN CHANGE BEARING TO 12211. WAS 2344B UPDATE SKILL REVISION DESCRIPTION	FEB 11/05/2007 EE 4/30/2005 DV 8/8/2002 CHKD DATE	DATE: 5/31/1994 DATE: 5/31/1994 DATE: 5/31/1994 DATE: