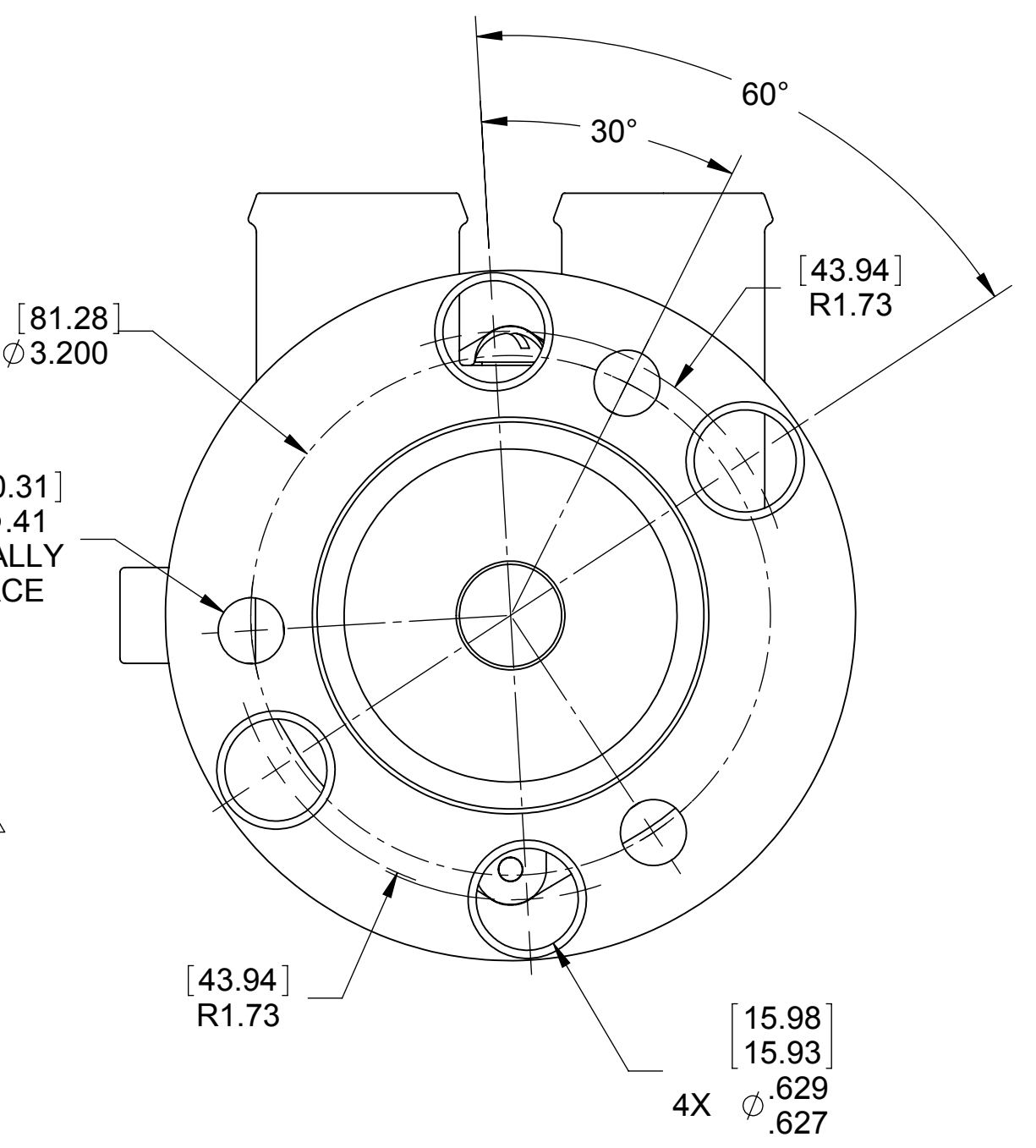
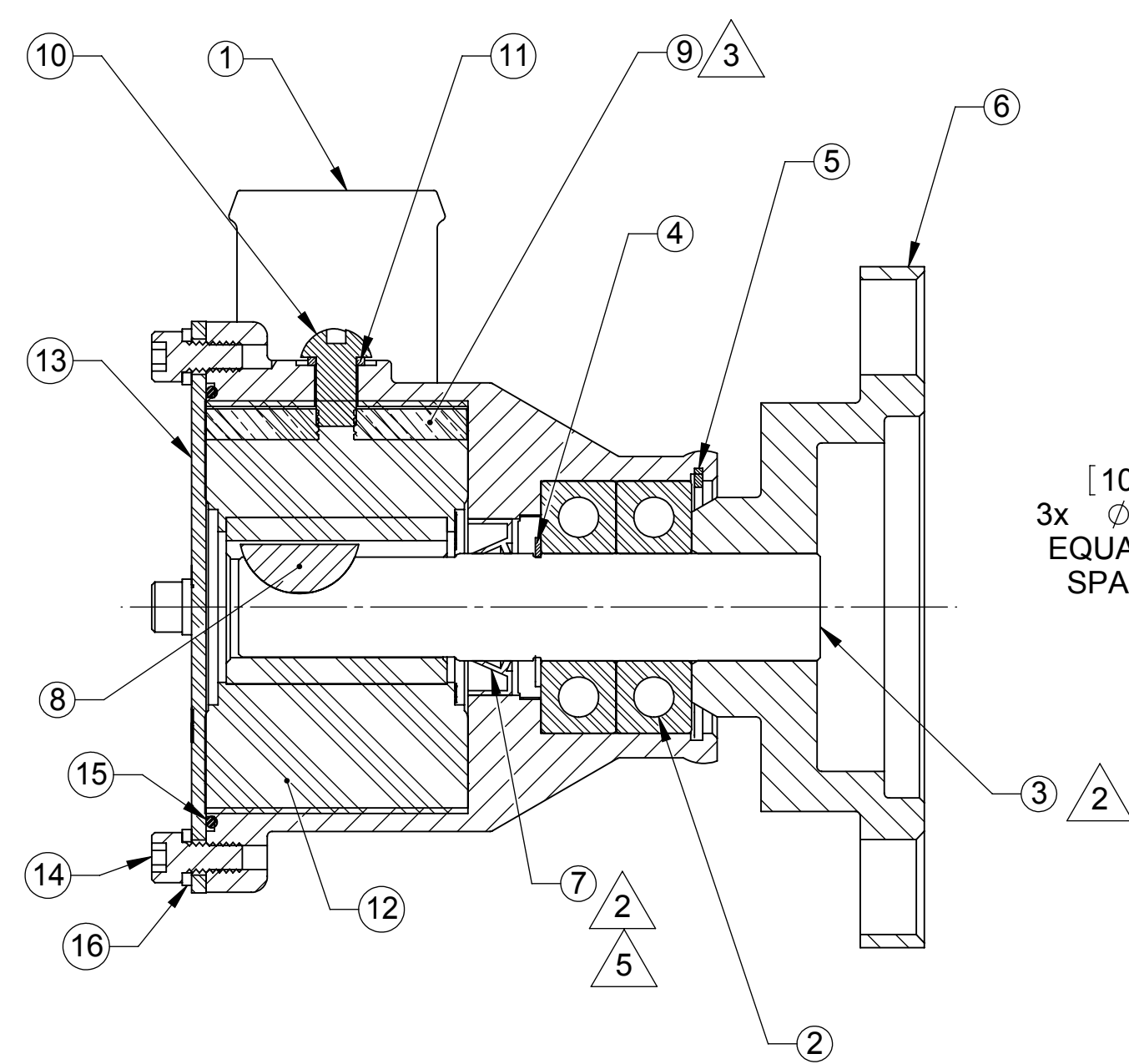
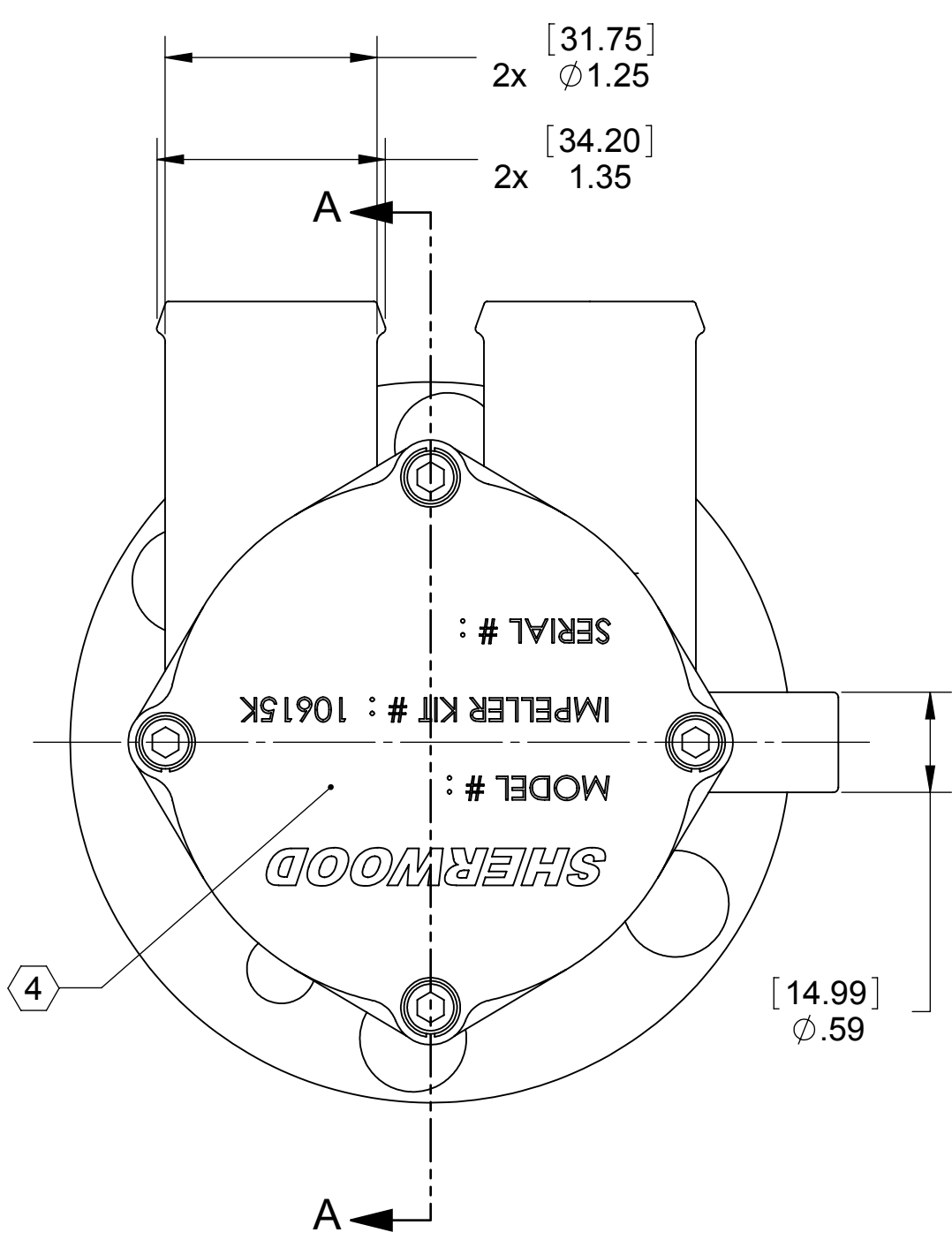
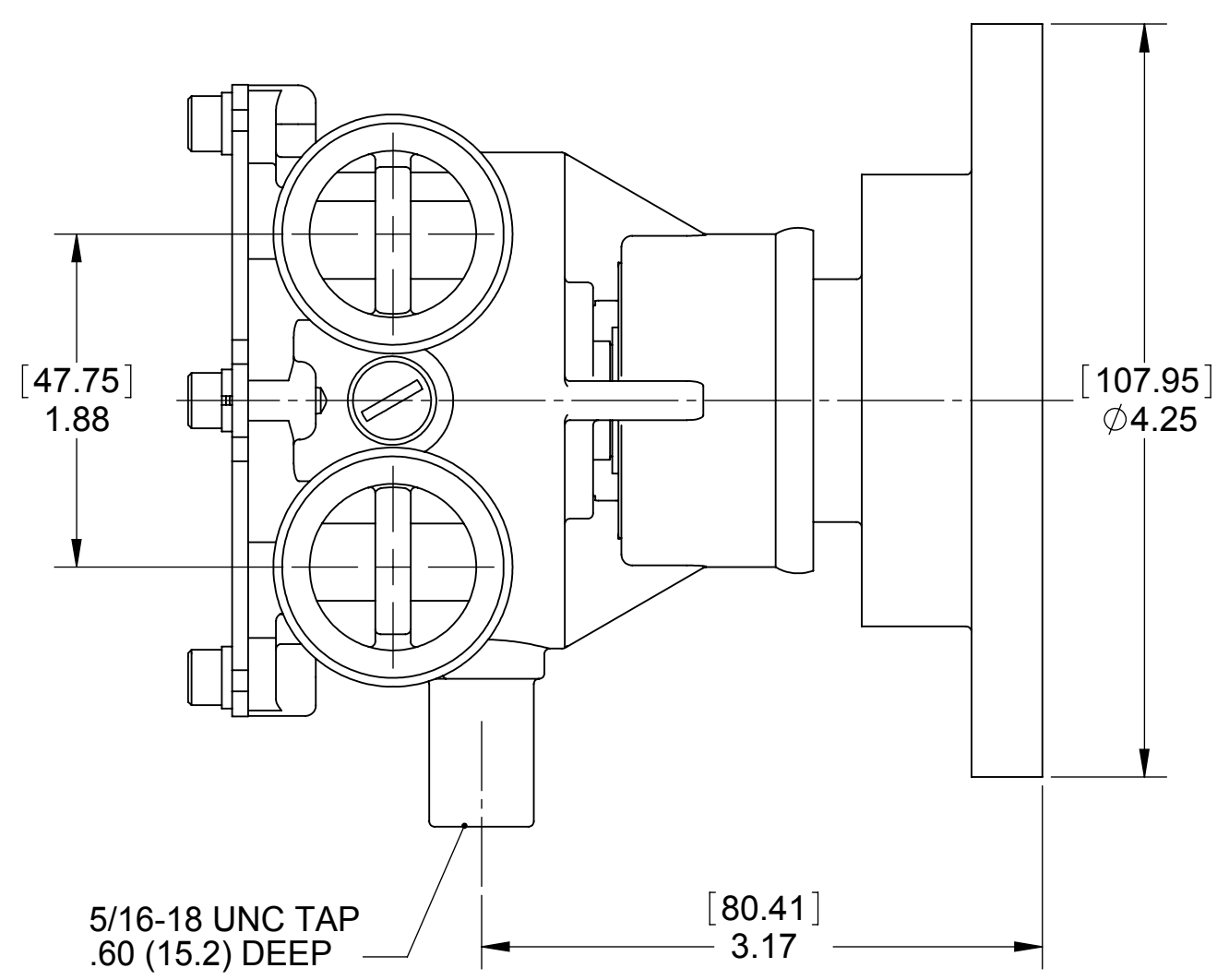


| ITEM NO. | PART NUMBER | DESCRIPTION | QTY. |
|----------|-------------|-----------------------|------|
| 1 | 21378 | BODY | 1 |
| 2 | 08490 | BEARING | 2 |
| 3 | 19308 | SHAFT | 1 |
| 4 | 06837 | RET. RING | 1 |
| 5 | 05126 | RET. RING | 1 |
| 6 | 19275 | HUB | 1 |
| 7 | 18652 | SEAL, LIP | 1 |
| 8 | 04432 | WOODRUFF KEY | 1 |
| 9 | 10944 | CAM | 1 |
| 10 | 19995 | SCREW 1/4-20 ROUND HD | 1 |
| 11 | 19996 | CAM WASHER | 1 |
| 12 | 10615 | RUBBER IMPELLER | 1 |
| 13 | 21120 | COVER PLATE | 1 |
| 14 | 2220-0099 | SHCS #10-24UNC x 3/8 | 4 |
| 15 | 12231 | O-RING | 1 |
| 16 | 00343 | LOCK WASHER | 4 |

PART NUMBER **P105**

- NOTES:
- (E) 1. REMOVED NOTE, SEE REV. E
 - 2. APPLY SIL-GLYDE TO SEAL LIP I.D. PRIOR TO SHAFT INSTALLATION.
 - 3. APPLY BEAD OF PERMATEX AROUND CAM SCREW THREADED HOLE PRIOR TO ASSEMBLY.
 - 4. STAMP "P105" AND DATE CODE IN LOCATION AS SHOWN.
 - (D) 5. APPLY SIL-GLYDE TO INSIDE LIP OF SEAL, LIP.



SECTION A-A

| REV. | ECN | DESCRIPTION | CHKD | DATE |
|------|------|---|------|------------|
| E | 7036 | REMOVED NOTE 1. | JJH | 8/22/2008 |
| D | 5942 | ADDED NOTE 5 | DV | 10/11/2006 |
| C | 5763 | REVISED NOTES, CHG COVER STAMP TO P105, WAS RA0570026 | RJE | 7/10/2006 |
| B | 3765 | ITEM 16 WAS 00344 SCREW | DV | 10/29/2003 |
| A | 1931 | RELEASE NEW ASSY TO PRODUCTION | DV | 8/2/2002 |

| | | | |
|--|----------------------|---|----------------|
| SHERWOOD A Div. of Hypro Corporation A PENTAIR COMPANY | | REPLACES PART NO. | REV. |
| DRAWING BASED ON ASME Y14.5M-1994 DO NOT SCALE PRINT | | DWG BY: FLA | DATE: 8/1/2002 |
| THIRD ANGLE PROJECTION | | CHECKED BY: | DATE: |
| SCALE: 1:1 | SHEET NUMBER: 1 OF 1 | APPROVED BY: | DATE: |
| PART DESCRIPTION: RUBBER IMPELLER PUMP | | THIS DRAWING IS THE PROPERTY OF HYPRO, AND WITHOUT WRITTEN AUTHORIZATION, MUST NOT BE COPIED OR COMMUNICATED. | |
| | | PART NUMBER: P105 | REV. E |