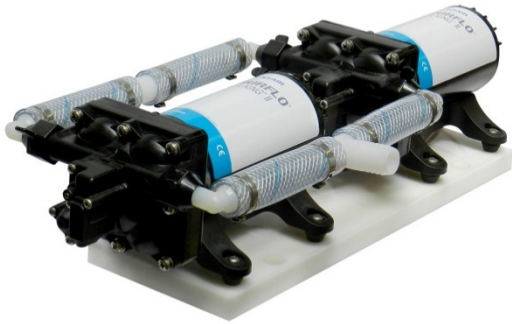




SHURFLO HIGH FLOW SYSTEM™ II 10.0 GPM

MARINE FRESH WATER SYSTEM – PRODUCT TECHNICAL DATA SHEET

OEM: 4558-153-E75
 AFTERMARKET: 4558-153-E75



APPLICATION:

Multi-fixture Marine fresh water system installation.
 This system may be used for general fresh water transfer

PUMP DESIGN:

Type: 4 Chamber Diaphragm pump
 Check Valve: (1-way operation) Prevents Reverse Flow
 Pump Ports: 1/2" -14 NPSM-Male
 Manifold: 3/4" Barb
 Liquid: 130°F [54°C] Max
 Dry-Prime: 6 feet [1.82 M]
 Run Dry: Yes
 Inlet Pressure: 30 PSI Max. [2.06 Bar]

ELECTRICAL:

Motor: 12V DC Permanent Magnet, Intermittent Duty.
 Protection: Thermal Overload, Automatic Restart
 Leads: 14 AWG, 14-3/4" [37 cm] Red +, 15" [38 cm] Black
 Fuse: Primary pump 20 Amp Recommended,
 Secondary pump 20 Amp Recommended,
 Both pumps together: 30 Amps Recommended.
 Control: Primary pump: Shut-Off 55 PSI [3.8 Bar]
 ± 2 PSI [0.13 Bar] Re-start 40 PSI [2.8 Bar]
 ± 2 PSI [0.13 Bar] Maximum By-Pass 65 PSI
 [4.5 Bar] ± 2 PSI [0.13 Bar]
 Secondary pump: Shut-Off 45 PSI
 [3.1 Bar] ± 2 PSI [0.13 Bar] Re-start 30 PSI [2 Bar]

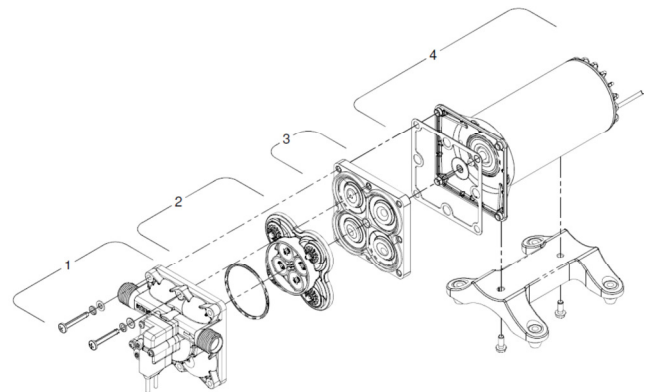
MATERIALS OF CONSTRUCTION:

Housings: Polypro
 Valves/Seals: EPDM
 Diaphragm: Santoprene
 Hardware: Stainless Steel

AGENCY APPROVALS:

Ignition Protection 8846, CE, IMCI Certified

REPAIR KITS



Number	4158-153-E75	4258-153-E07
*1	94-801-10	94-805-01
2	94-800-01	94-800-01
3	94-801-12	94-801-02
4	94-71-000-17	94-71-004-17
*1,2,3	94-801-13	94-805-02
Check valve (Not Shown)	94-800-03	94-800-03

*With preset switch and by-pass adjustment (if applicable)

SHIPPING INFORMATION:

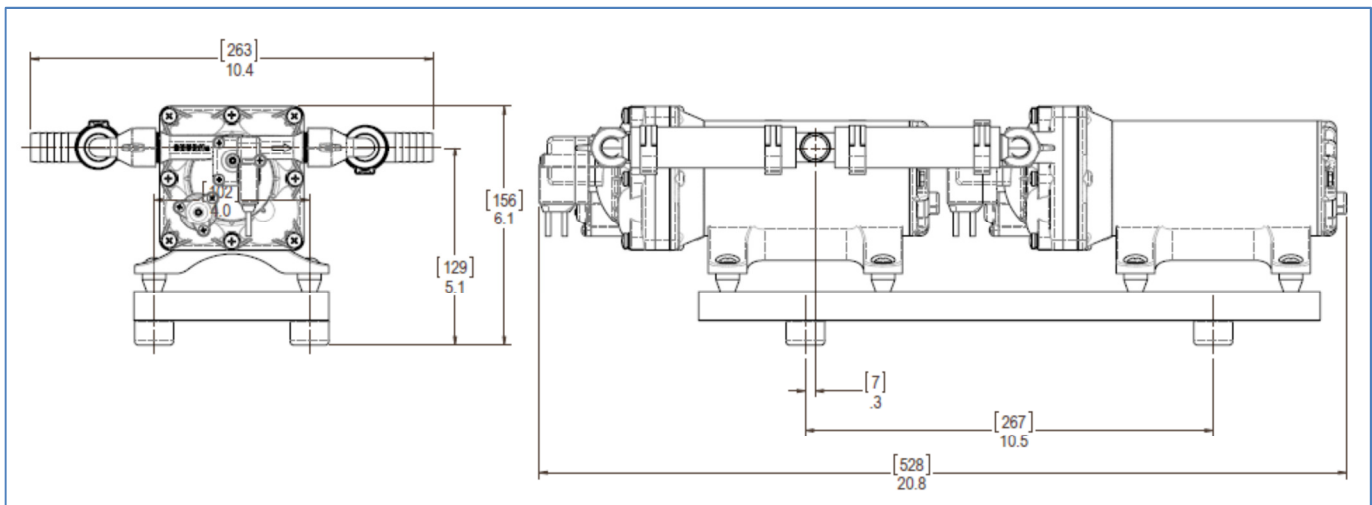
Approx. Net Weight: 20 Pounds [9.0 Kg] ea.
 Carton Qty.: 1
 Approx. Carton Size: 24”L X 18”W X 6”H [61cm x 46cm x 15cm]

RELATED DOCUMENTS:

Catalog: MS-030-140
 App Guide Sheet : MS-020-005
 Installation Manual: 911-1049
 Aftermarket Warranty: 911-1045

TYPICAL PERFORMANCE AT 13.6V

PRESSURE		FLOW		TOTAL	4158-153-E75	4258-153-E07
BAR	PSI	GPM	LPM	AMPS	AMPS	AMPS
0	0	10	37.8	13.9	7	6.82
0.7	10	9.0	34	16.7	8.4	8.2
1.4	20	7.9	29.9	19.1	9.6	9.5
2.1	30	6.7	25.3	21.6	10.7	10.8
2.8	40	5.6	21.1	24.3	12.1	12.1
3.4	50	0.8	3.4		13	



[View other boat pumps made by SHURflo on our website.](#)