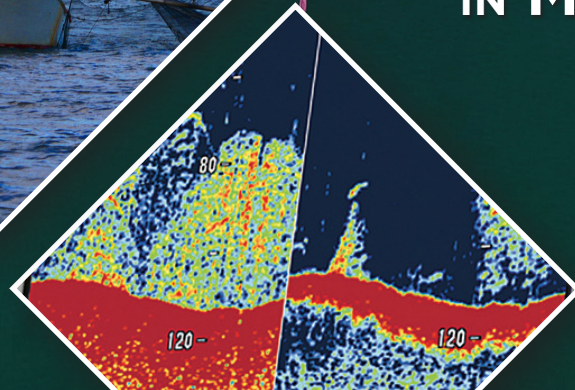
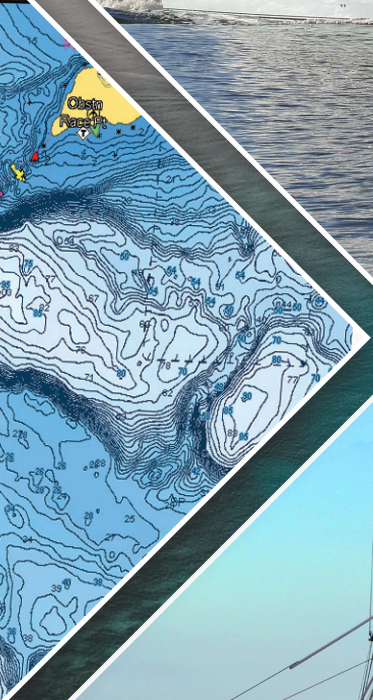
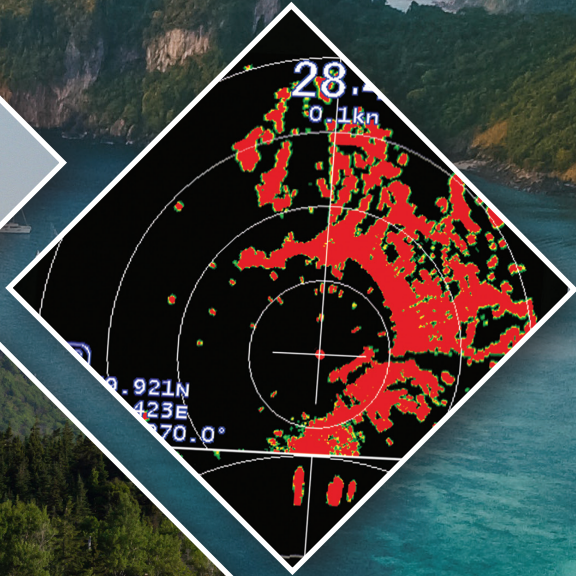


# SITEX<sup>®</sup>

MARINE ELECTRONICS



THE MOST TRUSTED NAME  
IN MARINE ELECTRONICS

# NAVPRO 900/1200 SERIES MFD

## NavPro 900C/F and NavPro 1200C/F | Hybrid Touch Screen Display

The NavPro MFD Series offers powerful chart plotting, CHIRP Sonar and new wireless radar capabilities in one affordable and convenient package. In addition to new integration with SI-TEX Wi-Fi radar, these 9-inch and 12-inch MFDs now come bundled with new SI-TEX Polaris Charts. These exclusive new charts provide rich bottom contour detail, high-resolution spot soundings, Tides & Currents information and relief shading for serious saltwater anglers.

Comes bundled with free SI-TEX Polaris Charts; also compatible with optional Navionics+, Navionics Platinum+ and C-MAP 4D cartography

Optional Platinum+ unlocks features like 3D, Panoramic Photos, Satellite Image Overlay w/SonarChart™ Shading

“F” versions available with built-in 40kHz-210kHz CHIRP Sonar with 300W, 600W or 1kW output

Mirror Control 2nd display/remote control using NavPro app & compatible mobile device

Automatic storage & synchronization of waypoints/data using Captain Cloud

Overall Dimensions (w/o bracket)  
NavPro 1200/F 15.5”(W)X10”HX3”(D)  
NavPro 900F 11”(W)X6.1”HX3”(D)

## Add Optional MDS-12 Wi-Fi Radar for Powerful Performance

Mount the compact 24-inch radome and wirelessly sync with any NavPro MFD for high-resolution color radar with professional-grade features.

Powerful 4kW radome antenna provides 36nm range

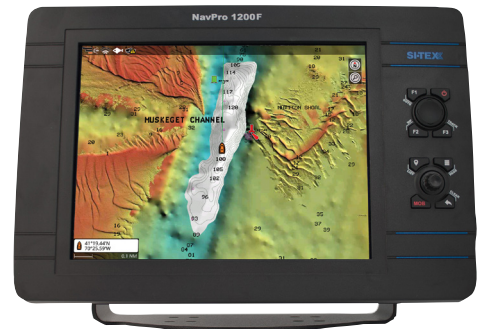
Slotted wave-guide antenna design with digital signal processing for superior target resolution

Dual-range radar function monitors close in and distant targets simultaneously

Advanced features like multi-speed antenna rotation, Auto or Manual Sea/Rain Clutter settings and more



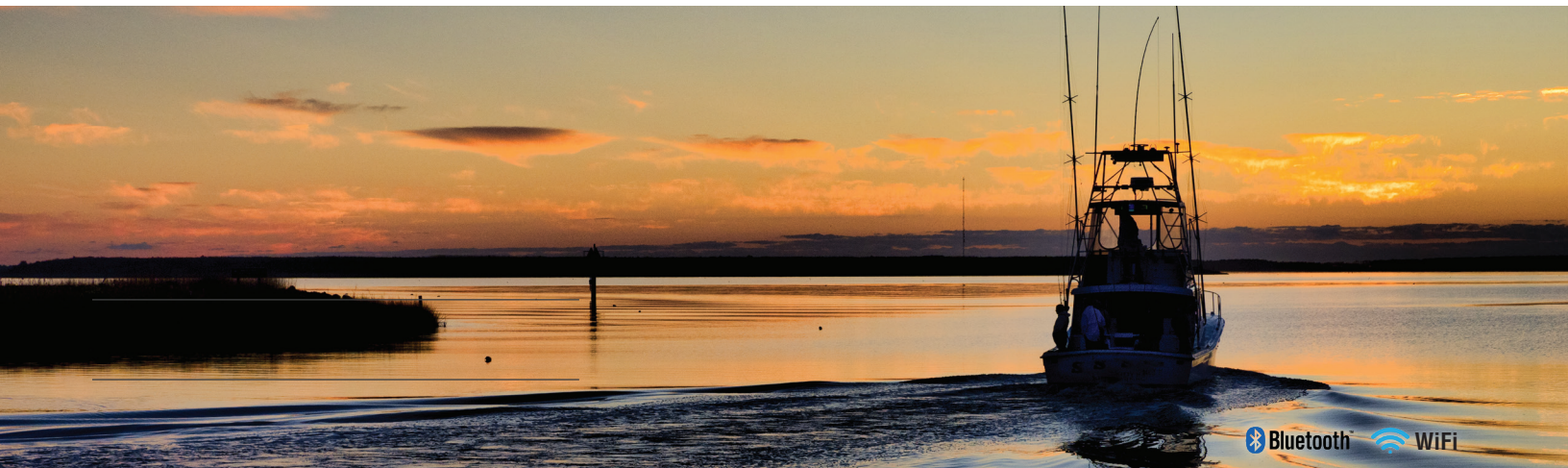
NavPro 900C/F  
9" Hybrid Display



NavPro 1200C/F  
12" Hybrid Display



MDS-12 WiFi Radar Antenna



# CVS-126/128/1410

## COMMERCIAL GRADE DIGITAL SONAR

### CVS-126 | 5.7" Compact Color Sunlight Viewable Sonar

Now skiffs, center consoles & other small boats can have the same digital fishfinding technology trusted by the pros.



600W output/dual frequency

Brilliant 240X320 pixel display

Depth ranges to 3,600'

IPX5 Waterproof rating

Auto Fishing/Cruising mode

Overall Dimensions (w/o bracket):  
7.18"(W) X 8.19"(H) X 5.51"(D)

### CVS-128 | 8.4" High-Performance Sunlight Viewable Digital Sonar

SI-TEX packs many professional features into this compact, 8.4" display, for big-time performance on any boat.



1kW or 600W dual frequency

Depth ranges from 10' to 3,600'

Sleek IPX5 waterproof case

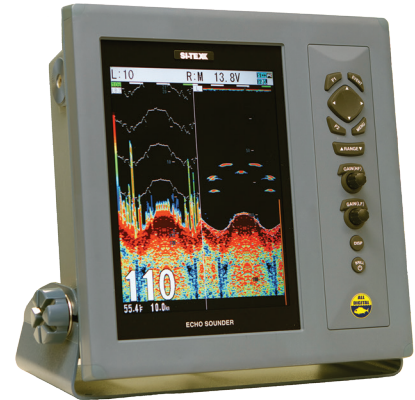
Auto Fishing/Cruising mode

A-scope & Audio/visual alarms

Overall Dimensions (w/o bracket):  
7.18"(W) X 8.19"(H) X 5.51"(D)

### CVS-1410 | 10.4" Commercial Grade Sunlight Viewable Sonar

This dual frequency (50/200kHz) sonar has the power and advanced fishfinding features for commercial boats and serious blue water battlewagons.



1kW output/dual frequency

8 custom ranges from 10' - 6,000'

Pulse transmission rate of 5,000 times per minute

Superior clutter suppression and signal-to-noise ratio

Overall Dimensions (w/o bracket):  
5.35"(W) X 8.85"(H) X 3.62"(D)

# MULTI FUNCTION/GPS

### Explorer NavPro Wifi | Black Box Multi-Function Navigator

Turns any onboard HDMI display or off-the-shelf PC monitor into an advanced electronic charting navigation system.



HDMI Video Output & NMEA2000

Engine monitoring & AIS integration

Uses C-MAP MAX or 4D charts

Two NMEA0183 data ports

### Trawl Plot 12 SD | 12.1" Display Commercial Chartplotter C-MAP MAX

This robust plotter was designed for the demanding needs of commercial fishermen and professional mariners.



Simple operation w/dedicated buttons

One touch event/gear marks

5,000 wypts/marks, 10,000 track points

Dimensions 5.5"(W) X 13"(H) X 10(D)"

# NAVIGATION SYSTEMS & SEA TEMPERATURE GAUGE

### SST-110 | Digital Sea Temp Indicator, Large 4-Digit LCD Display

Accurate digital sea temperature gauge. Simple to use & fully compatible with Dytex temperature components. Great for commercial & sport fishing.



Also available as SDD-110 Digital Depth Gauge

Accurate readings to 0.01-degree Fahrenheit/Celsius

Temperature trend arrow

Dimensions 4.3"X4.3"X3.5"

TRUSTED BY MARINERS FOR OVER 40 YEARS

# SVS-880C/F & 1010C/F MULTI-FUNCTION GPS CHART PLOTTER/SONAR

## SVS-880C/F & SVS-1010C/F | Chart Plotter/Sonar

These powerful navigation/sonar systems feature 10.1" WVGA or 8" SVGA direct sunlight viewable color LCD displays for big, clear pictures. Both are available as chartplotter (C) or chartplotter/sonar combination (C/F) providing professional-grade fishfinding.

Use either Navionics + or C-MAP MAX cartography

Pre-loaded with Navionics + North American Chart Card

52 channel built-in antenna (external antenna optional)

Global GPS (U.S., European Galileo, Russian Glonass and Asian QZSS)

Powerful 600W/1kW 50/200kHz sonar with available down imaging for versatile fishfinding performance

Overall Dimensions (w/o bracket):  
SVS-1010C/F 12.5"(W) X 7.25"(H) X 4.0"(D)  
Height on Bracket 8.0"  
SVS-880C/F 10.25"(W) X 6.70"(H) X 4.0"(D)  
Height on Bracket 7.60"



**SVS-880C/F**  
8" Chart Plotter/Sonar

**SVS-1010C/F**  
10.1" Chart Plotter/Sonar



**SVS-880C**  
8" Chart Plotter

**SVS-1010C**  
10.1" Chart Plotter

# SVS-560C/F & 760C/F/CF MULTI-FUNCTION GPS CHART PLOTTER SONAR

## SVS-560C/F & SVS-760C/F/CF | Sunlight Viewable Display

These multi-function charting systems bring great features and powerful performance to every boat. From coastal and offshore fishing rigs to power cruisers to ocean-going sailboats, these advanced systems provide all the advanced navigation and sonar features you'll need.

600W/1kW 50/200 kHz Sonar

Bottom Discrimination, Bottom Lock, Bottom Zoom, A-Scope

Depth, Fish School & Water Temp Alarms

Utilizes C-MAP MAX & Navionics + charts

SVS-560C/F & SVS-760C/F/CF comes preloaded with Navionics + North America Chart Card

SVS-760C/F/CF Dimensions (w/o bracket):  
7.38"(W) X 8.00"(H) X 4.75"(D)

SVS-560C/F Dimensions (w/o bracket):  
7.33"(W) X 4.25"(H) X 3.25"(D)  
Height on Bracket 5.75"



**SVS-560C/F**  
5" Chart Plotter/Sonar  
Built-in 52-Ch Receiver

**SVS-760C/F/CF**  
7.5" Sonar With Charting  
Optional 50-Ch GPS Receiver

# SAS-300/600/900

## AIS (AUTOMATIC IDENTIFICATION SYSTEM)

### SAS-300 | Class B AIS Transceiver, 6.5" LCD w/Charting Capabilities

This standalone AIS delivers advanced "Send and Receive" performance for recreational and professional mariners.



Rmax™ technology for superior signal processing

Radar range ring overlay on base charts or optional C-MAP MAX on SD

Displays Class A/Class B vessels, Base Stations & AIS SARTs

Overall Dimensions (w/o bracket): 7.38"(W) X 8.00"(H) X 4.75"(D)

### SAS-600 | Class B/SO AIS Transceiver With Chart Display

This internationally certified SODTMA Class B AIS provides 5W of transmit power and Class A Transmit Priority for enhanced navigational safety. Features include a large high-definition LCD chart display.



Long-range WiFi for remote viewing on tablets & mobile devices

C-MAP chart compatible

Ruggedized, waterproof design

MOB and SART alert and tracking

NMEA0183 and NMEA2000

Overall Dimensions (w/o bracket): 5.98"(W) X 6.49"(H) X 4.37"(D)

### NEW! SAS-900 | Class A AIS With Chart Display

This robust Class A AIS transceiver provides unmatched AIS performance, even in the harshest commercial or military applications. Very easy to update voyage data.



Internationally certified SOLAS, MED, FCC, Inland Waterway, Industry Canada

Wi-Fi, NMEA0183 and NMEA2000

Pilot plug interface

Shock, vibration, water and weather proof (IPx6 and IPx7)

Overall Dimensions (w/o bracket): 5.98"(W) X 6.49"(H) X 4.37"(D)

# MDA-5 & MODULES

### MDA-5 | Class B/SO AIS Transceiver

This advanced Class B/SO AIS transmits at 5W (vs. traditional 2W), and transmits vessel position/dynamic data on a more frequent, Class-A-type priority basis for added safety in challenging conditions. Also available as MDA-5H w/o WiFi.



**MDA-5 Class B/SO AIS**

IEC-62287-2, FCC, USCG certified

WiFi, NMEA2000/0183, USB

Integrated VHF antenna splitter

Dimensions: 6.75"(W) X 5.25"(H) X 2"(D)

## AIS (AUTOMATIC IDENTIFICATION SYSTEM)

### Metadata AIS | Black Box Modules, Plug-and-Play AIS Integration

Provides advanced AIS features, plug-and-play performance for chartplotters, radars, onboard PCs & other electronics. Features an internal 50-Ch GPS.



Metadata MDA-2  
Dual Channel  
AIS Receiver

Metadata MDA-1  
Class B  
AIS Transceiver

Metadata MDA-3  
AIS Antenna  
Splitter

Rmax™ Tech - AIS messages are received and decoded in real time

Transceiver/receiver feature USB, NMEA0183, & NMEA2000

Integrated zero-loss VHF antenna

TRUSTED BY MARINERS FOR OVER 40 YEARS

# T-2000 SERIES

## PROFESSIONAL DUAL-RANGE RADAR

### T-2000 Series | Professional Dual-Range Radar

With advanced radar features, up to 12kW power and a large display, this professional dual-range radar is ideal for commercial and larger recreational vessels.

Dual-Speed antenna with 48-rpm capability for high speed/river operations

Split-screen display of long- and short-range targets simultaneously

True-Trail Function identifies moving targets

Features include Interference Rejection, Target Expansion, Parallel Index, True/Relative Bearing

Standard AIS Interface module capable of tracking 200 targets\*, Optional 50-target Automatic Tracking Aid (ATA)\*\*

Overall Dimensions (w/o bracket):  
12.62"(W) X 12.62"H X 5.43"(D)



SI-TEX Radars are offered with a range of powerful radome and open array antennas for optimum performance

MODEL	POWER OUTPUT	ANTENNA TYPE	RANGE
T-2041	4kW	25" Radome	36 mile
T-2040-3	4kW	3.5' Open Array	48 mile
T-2040-4	4kW	4.5' Open Array	48 mile
T-2060-4	6kW	4.5' Open Array	72 mile
T-2060-6	6kW	6' Open Array	72 mile
T-2010-4	12kW	4.5' Open Array	72 mile
T-2010-6	12kW	6' Open Array	72 mile

**T-2000**  
**10.4" Color TFT LCD Display**

\*Requires interface to AIS device.  
\*\*Requires bearing data, speed data and lat/long data input.

# T-900 SERIES

## DIGITAL DUAL-RANGE RADAR

### T-900 Series | Digital Dual-Range Radar

Features like SI-TEX's exclusive Hyper-Digital Processing (HDP) and Dual-Range Display provide boaters with detailed information on land features, vessels, squalls, and more, for safer navigation in challenging conditions.

Dual-speed antennas with 48-rpm capability for high speed/river operations

Split-screen display of long- and short-range targets simultaneously

True-color targets based on strength

Clearly ID moving targets with True Trail

Features include Warning Zone, Head Up/North Up/Course Up/True Motion Display

Standard AIS Interface module capable of tracking 100 targets\*, Optional Automatic Tracking Aid (ATA) and AIS interface\*\*

Overall Dimensions (w/o bracket):  
9.45"(W) X 10.35"(H) X 5.21"(D)



**T-900**  
**8.4" Daylight Viewable LCD**

MODEL	POWER OUTPUT	ANTENNA TYPE	RANGE
T-941	4kW	25" Radome	36 mile
T-940-3	4kW	3' Open Array	48 mile
T-940-4	4kW	4' Open Array	48 mile

# T-760 SERIES

## TOUCH SCREEN PROFESSIONAL RADAR

### T-760 Series | Touch Screen Radar

Big time features, plenty of power, and innovative touchscreen control in a compact, affordable radar system that's right at home on any boat. Packed with many advanced functions and features found on SI-TEX's professional marine radars.

Powerful 4kW transmitters for accurate target detection in all conditions

Multi-speed 16/27/36/48 rpm antenna rotation

Standard 50-target AIS tracking capability\*\*

Standard 10-target MARPA capability\*

11 Trail Indication settings

Auto or Manual Sea/Rain Clutter modes

Relative Motion/True Motion/North-Up/Head-Up and Course-Up presentation modes

Simple operation via touchscreen and single rotary dial

Slim, stylish case with vertical display

Overall Dimensions (w/o bracket):  
5.35"(W) X 8.85"(H) X 3.62"(D)



**Compact Radome  
Weighs 11.0 Lbs**



**T-760  
7" Color Daylight Viewable LCD**

MODEL	POWER OUTPUT	ANTENNA TYPE	RANGE
T-760	4kW	18" Radome	24 mile

\*Requires interface to AIS device.

\*\*Requires bearing data, speed data and lat/long data input.



TRUSTED BY MARINERS FOR OVER 40 YEARS

# SP-70/80

## HIGH PERFORMANCE AUTOPILOTS

### SP-70/80 | High Performance Autopilot, Versatile and Robust Steering Performance

The robust SP-70/80 is a proven performer on boats around the world, providing accurate, reliable steering under the most challenging conditions. Rough sea states, wicked crosswinds, and driving currents, the SP-70/80 is built to take them all in stride and keep your vessel on course. That's why it continues to be a leading choice of recreational craft and hard-working commercial fishing boats alike. Made with professional grade components and features, the versatile SP-70/80 is capable of operating with most standard vessel steering systems. In the SI-TEX tradition, the SP-70/80 is built to perform and built to last.

Extremely robust components

Fixed or handheld operation

Rugged waterproof control head

10 selectable steering parameters

Optional, full function second station



# SP-38

## COMMERCIAL AUTOPILOT WITH INTELLIGENT STEERING

### SP-38 | Color Display Autopilot With Intelligent Steering & Professional Features

Simple to use, yet packed with professional features, this new autopilot is ideal for powerboats and commercial vessels up to 100'. Intelligent Steering Technology (IST) "learns" vessel characteristics for superior steering capabilities, while Adaptive Steering adjusts for various sea conditions and vessel speeds. Pre-defined parameter sets for full or semi-displacement hulls, planing hulls, stern drives and sailboats. Easily configurable for fishing, offshore vessels, workboats, towboats, and yachts. List of advanced features includes 5.7" sunlight viewable color LCD with Night Vision Mode.

Simple to use course knob with mechanical detent

Work Mode for fishing boats, towboats & workboats

Nav Mode for precise track steering

Proportional Rate Control for gentle steering response

Automatic Leeway Compensation for drift, tide & wind

Optional auto bow thruster interface

NMEA2000, Ethernet & NMEA0183 interface

Easy auto setup allows for auto-drive detection, rudder response time, compass detection & calibration

The SP-38 Pilot is available with the V200-2 GPS Satellite Compass for the best pilot performance and for hard-to-steer vessels



**SP-38 Commercial Autopilot**  
**5.7" Sunlight Viewable LCD With Night Vision Mode**



# SP-120C/120

## HIGH PERFORMANCE AUTOPILOTS

### SP-120C | Compact Virtual Feedback Autopilot System With Color Display

The SP-120C Autopilot from SI-TEX is an affordable, autopilot-in-a-box kit that is ready to install on a wide range of boats with cable or hydraulic steering systems. With a compact, 4.1" square splash-proof control head, this new autopilot is easy to mount on just about any type of vessel. Its compact size, ease of use and affordability make it an especially appealing option for small boats that downrigger troll for salmon in the Great Lakes and the Pacific Northwest. Or anyone who wants big-time professional steering performance in an easy to buy, easy to install and easy to use package.

For vessels with manual or power assisted mechanical steering, the system replaces the original cable helm unit with a heavy-duty helm unit that has the drive motor and rudder feedback built in. In this configuration, installation is simplified by not having to run wires to the stern. The included Electronic Rate Gyro Compass delivers <1-degree course detection for precise vessel control under a wide variety of conditions. Simple controls and a new easy-to-use menu make the SP-120C a breeze to set up and operate, even for boaters with little or no autopilot experience.

Shows Compass Heading, Selected Heading & Rudder Angle information simultaneously

Manual, Auto, GPS/Waypoint Steering & Wind Steering Modes

Off course alarm

Uses GPS SOG and COG to enhance performance

NMEA 0183 interface with GPS/chartplotters for navigation

NMEA 0183 output of compass heading at 10kHz for chart/radar overlay on MFDs



SP-120C Color



SP-120 Monochrome



TRUSTED BY MARINERS FOR OVER 40 YEARS

# GP-915 DGPS NAVIGATOR

## GP-915 | DGPS Navigator With Color Display

This 72 channel parallel DGPS navigator offers a bright 4.3-inch high-resolution color LCD screen for easy viewing in all light conditions. Multiple display modes including Nav Data, Plotter, Navigation Graph and Highway.

Large numeric keypad for easy operation

Storage for 10,000 waypoints, 100 routes of 50 points each and 3,000 trail points

Two data ports

USB memory support for quick backup of settings, waypoints, routes

Overall Dimensions (w/o bracket):  
5.75" x 5.75" x 2.75"  
6.50" High on Bracket



**GP-915**  
DGPS Navigator

# SVS-460C COMPACT CHARTPLOTTER

## SVS-460C | Compact Chartplotter

Precision GPS navigation and dual-fuel charting in a size that fits any boat. With a 4.3" high-resolution color LCD display, built-in antenna and simple operation, the SVS-460C is a great choice for all types of boaters.

Uses either Navionics + or C-MAP MAX cartography

Comes pre-loaded with Navionics + North American Chart Card

52 channel built-in antenna (external antenna optional)

Global GPS (U.S., European Galileo, Russian Glonass and Asian QZSS)

Overall Dimensions (w/o bracket): 7.33"(W) X 4.25"(H) X 3.25"(D)  
Height on Bracket 5.75"



**SVS-460C**  
Compact Chartplotter

# GP-11C MAX SMART DGPS SENSOR

## GP-11C MAX | Smart DGPS Sensor Accurate GPS Data Output

Accurate position data for navigation systems. High speed 18Hz Update..

Smart 72-channel DGPS antenna

Uses up to three different GPS networks concurrently for maximum position accuracy

High sensitivity with minimal acquisition time

Low power consumption

Low profile, pole or flush mountable

IP67 waterproof rating

Delivers better than 3 meter accuracy

Outputs NMEA0183, GGA, RMC, GSA, GSV, TXT

Works with any SI-TEX plotter or other unit requiring NMEA0183 GPS input



**GP-11C MAX**  
Smart DGPS Sensor

# VECTOR COMPASS

## GPS & SATELLITE COMPASSES

### V200 | 3D GPS Satellite Compass

Sophisticated satellite compass features integrated gyro sensors for smooth heading readings, fast heading reacquisition and reliable 1° per minute heading for up to three minutes in case of temporary GPS loss. V200-2 recommended for use with the SP-38 Autopilot.



Measures 13.7" L x 6.25" W x 3.00" H - 6.61" High on Mount

Provides pitch, heave and roll data for 3D (lat/long/alt) positioning

424 Channel receiver uses all known satellite systems

Available with Sub-Meter Accuracy via optional Atlas Satellite Service Lifetime Subscription

Precise 0.75° heading accuracy

60 second cold-start acquisition, 10-second hot start and 100°/second maximum rate of turn

Excellent in-band and out-of-band interference rejection

### Vector Pro G1 | 3D GPS Satellite Compass

This compact, maintenance-free GPS satellite compass provides three-dimensional positioning data to NMEA0183 and NMEA2000 compatible electronics.



17.16" x 6.87" x 2.76"  
Mount not included

No moving parts

Better than 0.60° heading accuracy

Rate of turn tracking rates up to 90-degrees/second

Provides heave, pitch and roll data for 3D (lat/long/alt) positioning

Built-in SDGPS (Satellite Differential GPS)

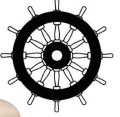
Sub 1-meter position accuracy using WAAS, EGNOS and MSAS differential

Maintains corrected position for 40+ minutes following differential signal loss

Heading update rates at 10Hz (20Hz optional)/multiple BAUD rate selections

### Vector Pro G2 | IMO Compliant 3D GPS Satellite Compass

This IMO compliant GPS Satellite compass provides precise heading and position data for professional and high-end applications.



26.40" x 8.37" x 4.8"  
Mount not included

Accurate and stable, with quick start-up

Better than 0.30° heading accuracy

Rate of turn tracking rates up to 90-degrees/second

Provides heave, pitch and roll data for 3D (lat/long/alt) positioning

Position accuracy <0.6 meter using WAAS, EGNOS and MSAS differential

Heading update rates up to 20Hz/multiple baud rate selections

Outputs data in NMEA0183 & NMEA2000

Initial start up <60 seconds/heading fixes <10 seconds

## KRD-10

## COLOR LCD REMOTE DISPLAY

### New! KRD-10 | Color LCD Remote Display

With its large color LCD screen, the 4.1" square KRD-10 provides a large remote display of any NMEA0183 input data. Rugged construction and a bright, clear display give you the graphical and digital info you need anywhere onboard.

Simple and intuitive user interface

18 different display modes

Use as Sat Compass Display

Bonded color LCD

Two NMEA-0183 Ports

Low 4.5-watt power consumption

5.75" x 5.75" x 2.75"  
6.50" High on Bracket



KRD-10  
NMEA Repeater



## TRUSTED BY MARINERS FOR MORE THAN 40 YEARS

Mariners around the world have trusted SI-TEX for more than 40 years. They trust us to build tough-as-nails marine electronics that perform in the harshest environments and conditions on the planet. At the same time, we deliver the innovative features and functionalities that all boaters want — whether they make a living on the water or just love to spend time fishing, cruising or sailing.

Whether it's a advanced radar, sonar, GPS/Chartplotter, MFD, autopilot, AIS, heading sensor or other system, SI-TEX has the right equipment for every size and type of recreational or light commercial vessel.

We stand behind our products with a 2-year limited warranty and Long Island, New York based warehouse and customer service. If you need help with any SI-TEX product, call or email us and we'll be happy to assist you.

