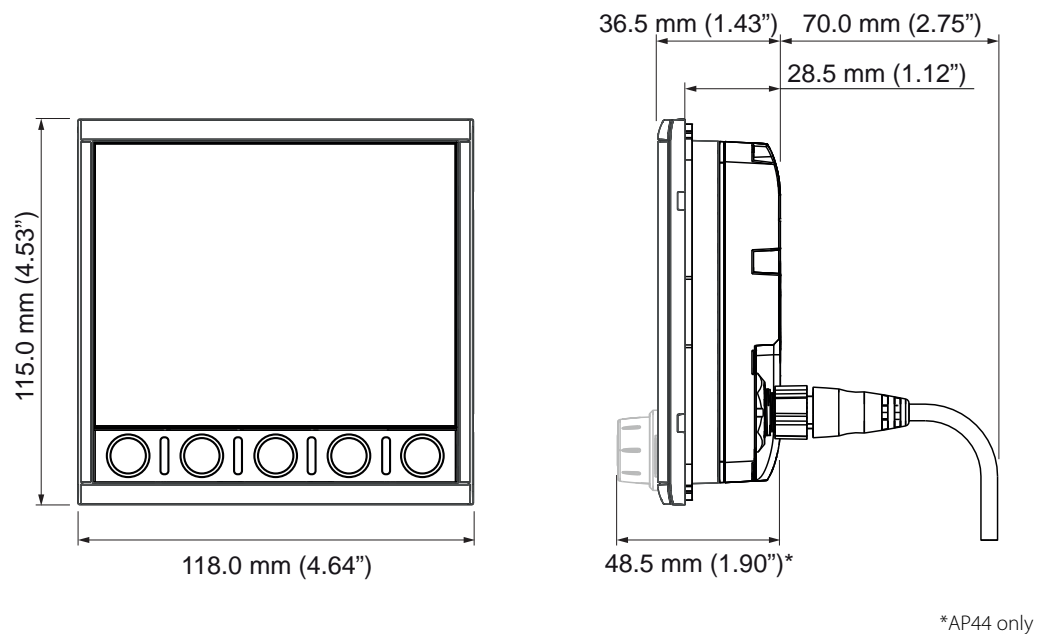


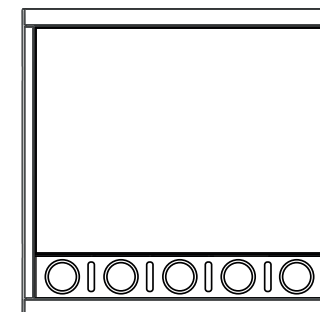
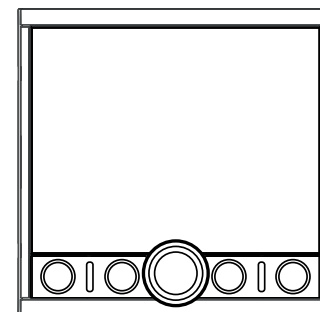
Dimensions



SIMRAD

B&G

AP44 / IS42 / Triton² INSTALLATION GUIDE



Parts included

1. 1 x Display unit + Removable bezel

2. 1 x Micro-C Drop cable - 0.6 m (2')

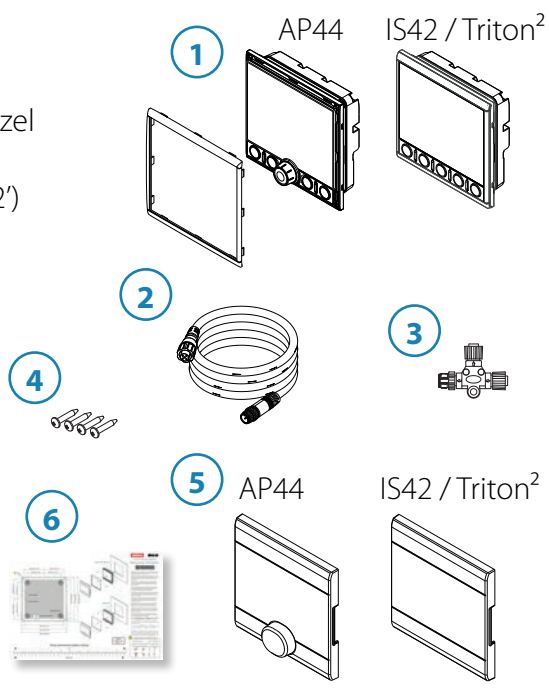
3. 1 x Micro-C T-Connector

4. 4 x Mounting screws

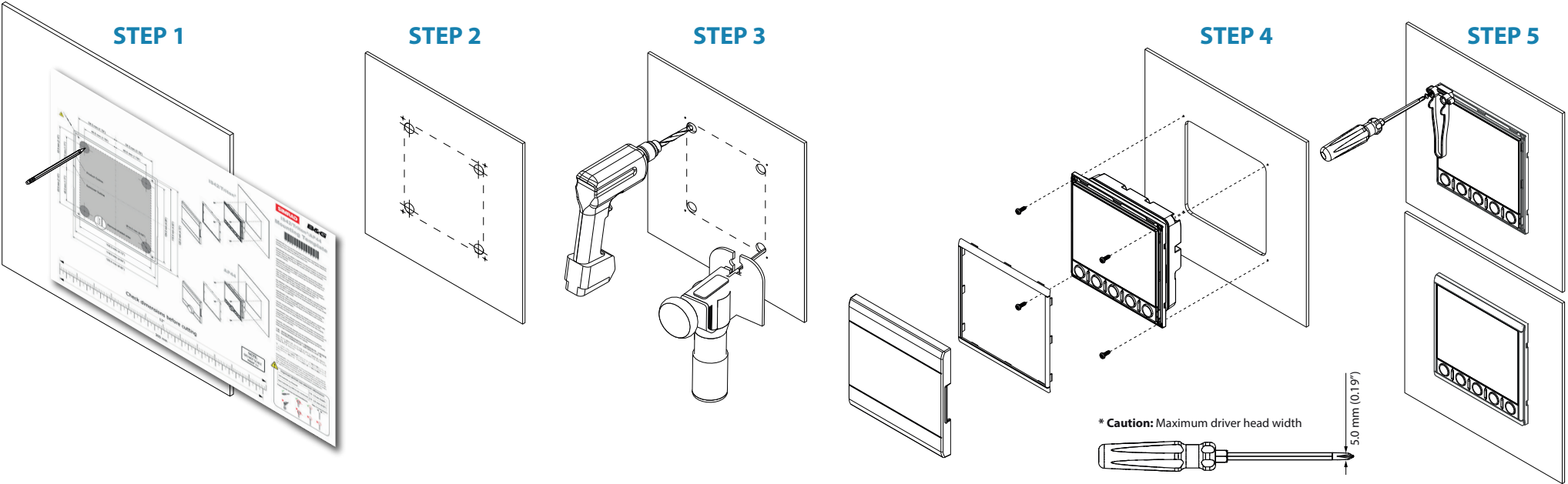
5. 1 x Suncover

6. Mounting template

7. Screw jig

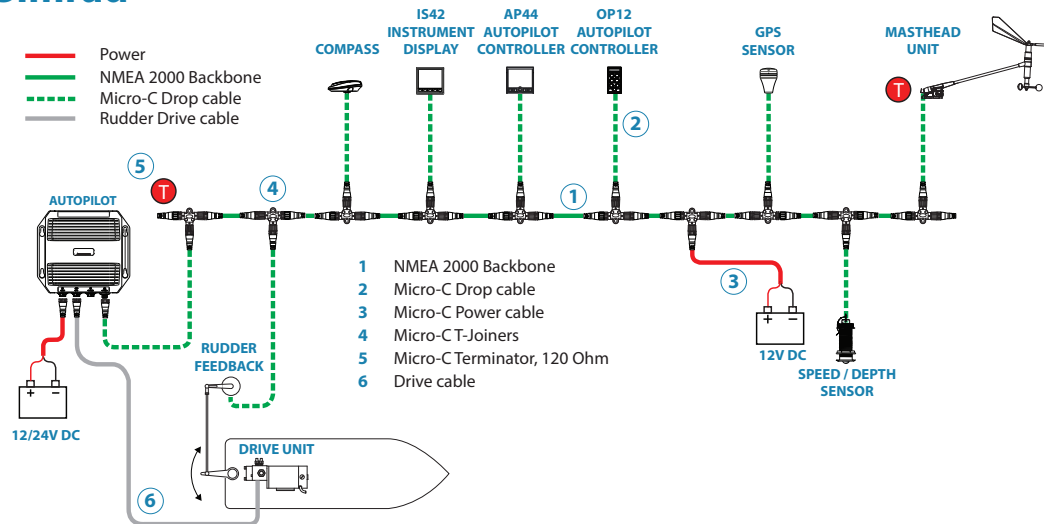


Mounting



System wiring example

Simrad



B&G

