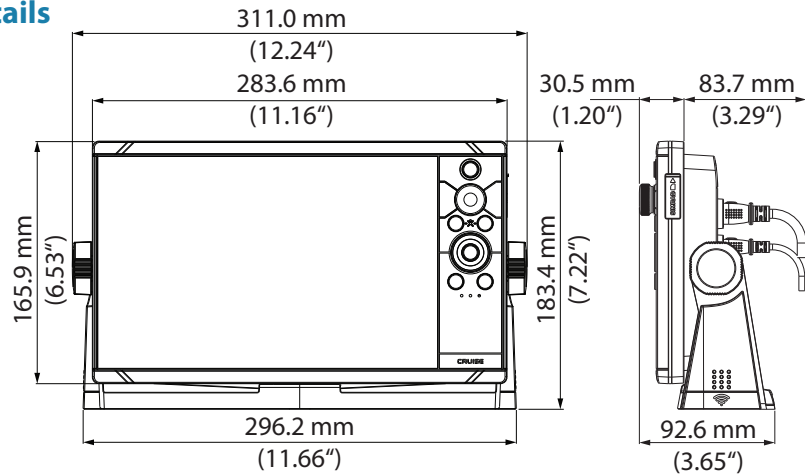


Details



Sunlight readable



-15°C to +55°C
+5°F to +131°F



1.03 Kg
2.26 lbs



1x card reader slot
Micro SD



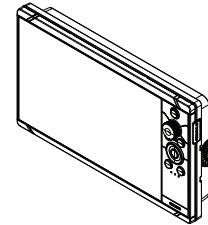
70°/50°, top/bottom
70°/70°, left/right



IPX6
IPX7

SIMRAD

CRUISE 9 INSTALLATION GUIDE



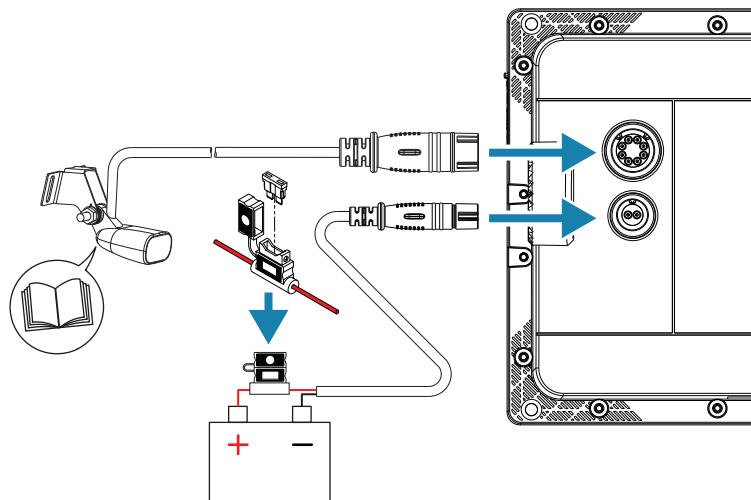
This product complies with:

- CE under RED Directive 2014/53/EU
- the requirements of level 2 devices of the Radio communications (Electromagnetic Compatibility) standard 2017

Warning

The user is cautioned that any changes or modifications not expressly approved by the party responsible for compliance could void the user's authority to operate the equipment.

Wiring



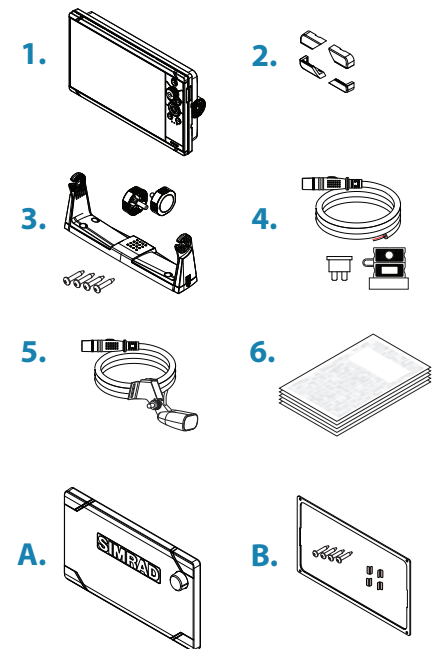
10.4 to 17.0 V DC
< 19.4 W (3 A fuse)

Parts included

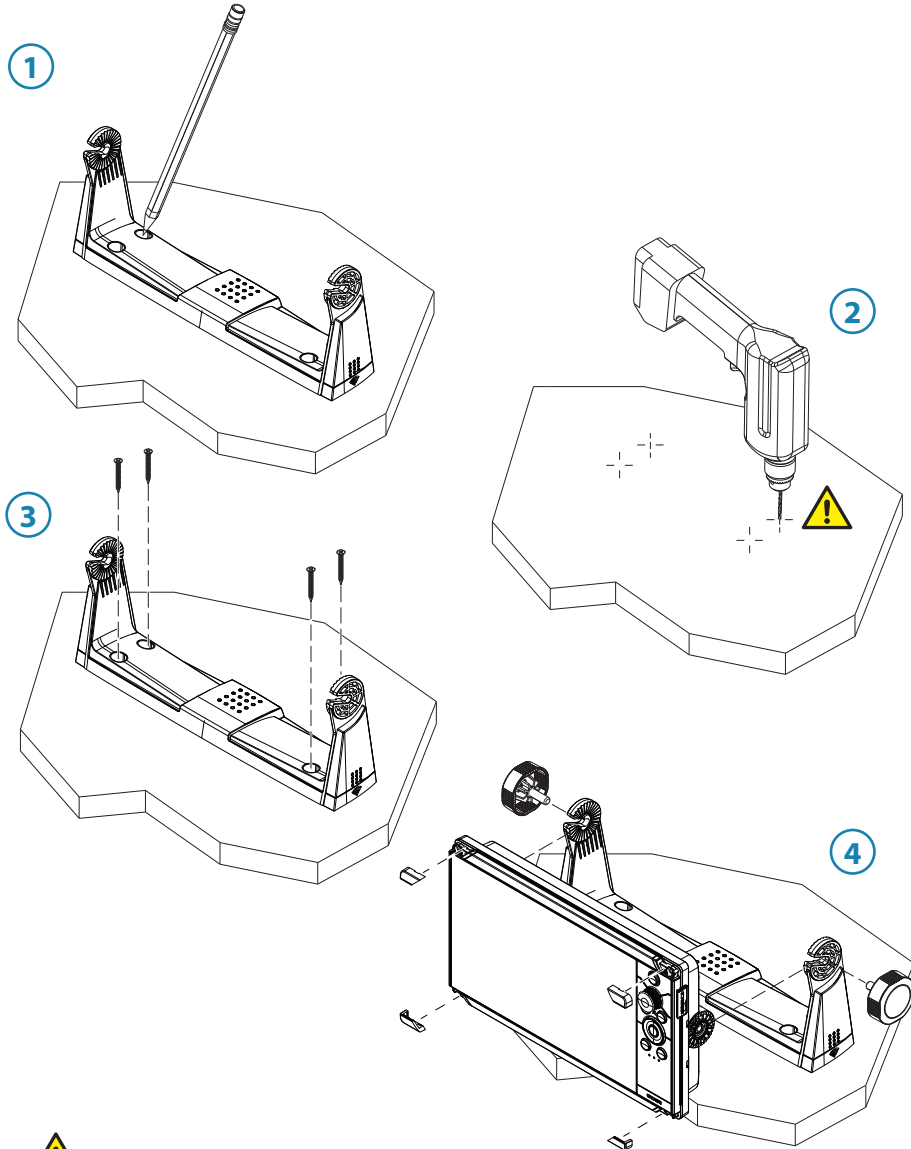
1. Display unit
2. Corner clips
3. Bracket mounting kit
 - Bracket
 - 2x knobs
 - 4x screws, self-tapping #10 X 3/4 PN HD SS
4. Cable and fuse kit
 - Power cable
 - Fuse and fuse holder
5. Skimmer transducer
6. Document package


Accessories (sold separately)

- A. Sun cover
Part no.: 000-15069-001
- B. Panel mounting kit
Part no.: 000-15072-001



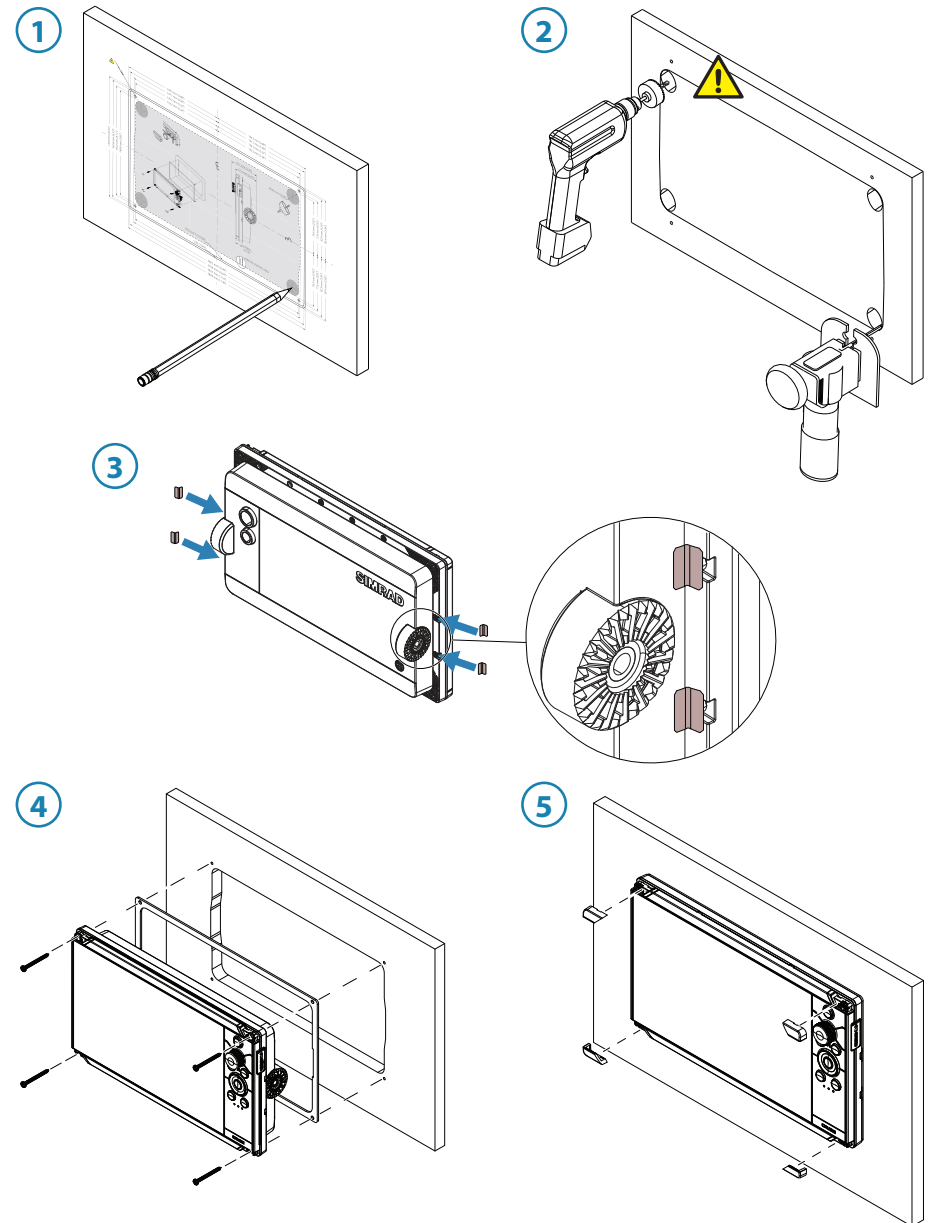
Bracket mounting




 Recommended pilot holes.

Material	10# screw
Soft materials e.g. Plywood	Ø 3.7-4.0 mm (5/32")
Hard materials e.g. Fiberglass, Acrylic, Hardwoods	Ø 4.1-4.7 mm (3/16")

Panel mounting



 See panel mounting template for drilling and cutting details. Panel mounting kit is sold separately.

Trolling motor installation

Refer to the documentation included with the trolling motor accessories (000-0051-45).

Technical specifications

Environmental	Mid/High Skimmer	Low/High Skimmer
Operating temperature	0°C to +50°C (32°F to +122°F)	0°C to +50°C (32°F to +122°F)
Storage temperature	-30°C to +70°C (-22°F to +158°F)	-30°C to +70°C (-22°F to +158°F)
Physical		
Weight (without cable)	0.11 kg (0.24 lbs)	0.37 kg (0.81 lbs)
Cable length	6 m (19.5 ft)	6 m (19.5 ft)
Mounting options	Transom, trolling motor, shoot-thru-hull	Transom, shoot-thru-hull
Sonar		
Output	Depth and temperature	Depth and temperature
Frequency	Medium/High CHIRP (83/200 kHz)	Low/High CHIRP (50/200 kHz)
Beam width (at -3dB)	38° at 83 kHz 17° at 200 kHz	29° at 50 kHz 12° at 200 kHz
Depth (down to)	304 m (1000 ft) at 200 kHz	914 m (3000 ft) at 50 kHz
Speed (up to) (transom mount)	60 knots (70 mph)	60 knots (70 mph)

→ **Note:** When mounted in-hull or shoot-thru-hull the transducer will read the temperature at the transducer's location.

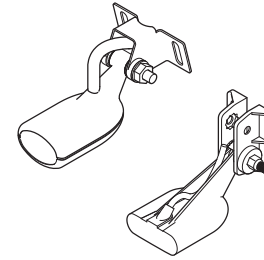
LOWRANCE

SIMRAD

B&G

**SKIMMER
TRANSDUCERS**

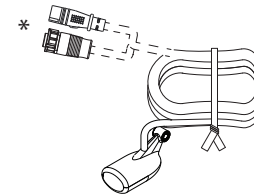
INSTALLATION GUIDE



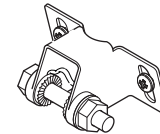
Parts included

Mid/High Skimmer

Transducer with cable

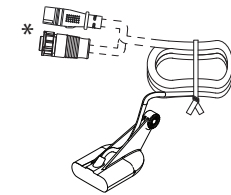


Bracket kit

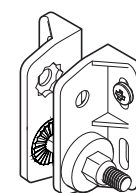


Low/High Skimmer

Transducer with cable



Bracket kit

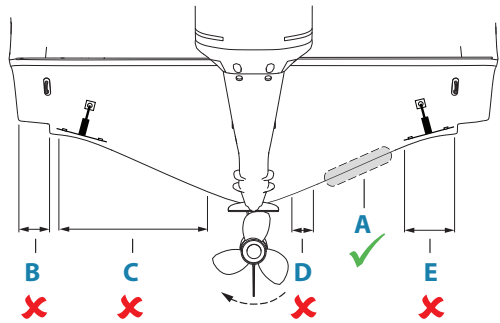


* Available with different connectors

Mounting guidelines

The transducer could lose bottom signal when the boat is on plane.
The transducer will not work while it is out of the water.

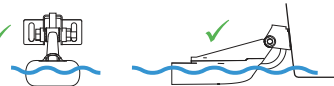
If your boat has a counterclockwise propeller rotation configuration mirror the example shown in the illustration below.



Best mounting location:
A. undisturbed water flow

Avoid mounting:
B. behind planing strake
C. 1 m (3.3') to port (left) of propeller
D. within 7.5 cm (3") to starboard of propeller close to trim tabs
E.

Mount the transducer parallel to the water surface. ✓



Shoot-thru-hull installation

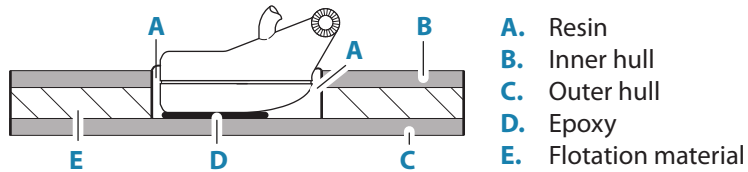
Warning: Do not remove any material from your inner hull unless you know the hull's composition. Contact your boat dealer or manufacturer to confirm your hull specifications.

Shoot-thru-hull transducers cannot shoot through:

- wood hulls
- metal hulls

Before you epoxy the transducer to the hull, make sure that:

- the area is clean, dry and free of oil or grease
- the surface of the hull is flat so the entire transducer face is in contact with the hull

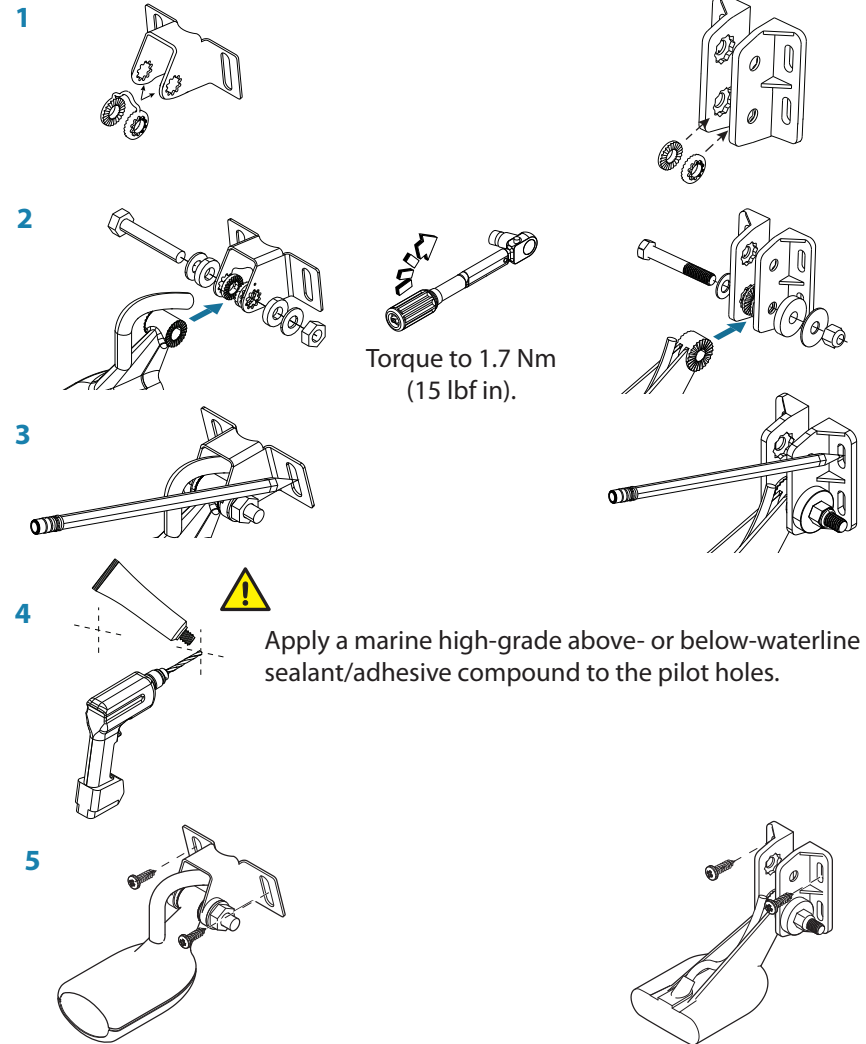


1. Sand smooth the face of the transducer and the bottom of the inner hull.
2. Apply epoxy to the face of the transducer and the bottom of the inner hull.
3. Glue the transducer to the inner hull (D).
4. Apply pressure to the transducer while the epoxy is setting.

Transom mount

Mid/High Skimmer

Low/High Skimmer



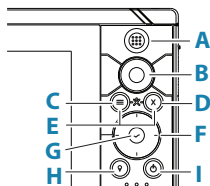
Torque to 1.7 Nm
(15 lbf in).

Apply a marine high-grade above- or below-waterline sealant/adhesive compound to the pilot holes.

Warning: Recommended pilot holes:

Material	10# screw
Soft materials e.g. Plywood	Ø 3.7-4.0 mm (5/32")
Hard materials e.g. Fiberglass, Acrylic, Hardwoods	Ø 4.1-4.7 mm (3/16")

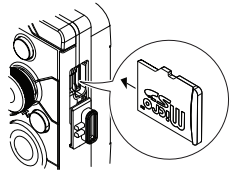
Front controls



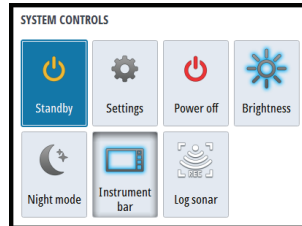
A	Pages/Home key - press to open the Home page for page selection and setup options.
B	Rotary knob - turn to zoom or scroll the menu. Press to select an option.
C	<p>Menu key</p> <ul style="list-style-type: none"> • Press to display the active panel's menu. • With a page displayed, press and hold to display the Settings dialog. • On the Home page, with a highlighted split page, press and hold to change the split page orientation to horizontal or vertical.
D	Exit key - press to exit a dialog, return to previous menu level, and clear the cursor from the panel.
E	MOB - press simultaneously the Menu and Exit keys to create a MOB waypoint at the vessel's position.
F	<p>Arrow keys</p> <p>With no menu active: press to activate the cursor or to move the cursor.</p> <p>Dialog and menu operation: press to navigate through menu items and to adjust a value.</p> <p>Toggle the active screen in a split page.</p>
G	<p>Enter key</p> <ul style="list-style-type: none"> • Press to select an option or to save settings. • In a split page press to activate the cursor.
H	<p>Waypoint key</p> <ul style="list-style-type: none"> • Press to place waypoint at vessel position or at cursor position when cursor is active. • Press and hold to open the Plot dialog from where you can add or manage waypoints, routes and tracks.
I	<p>Power key</p> <ul style="list-style-type: none"> • Press and hold to turn the unit ON/OFF. • Press once to display the System Controls dialog. • Multiple short presses to toggle through the predefined dimming levels.

Card reader

- **Note:** Do not download, transfer or copy files to a chart card. Doing so can damage chart information on the chart card.



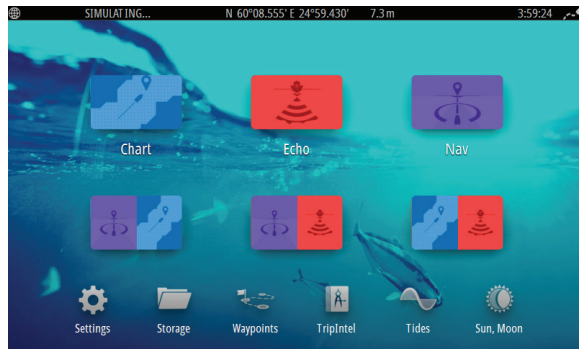
System controls dialog



Display illumination

- Adjust the display backlight from the System Controls dialog
- Cycle the preset backlight levels by short presses on the Power key

The Home page



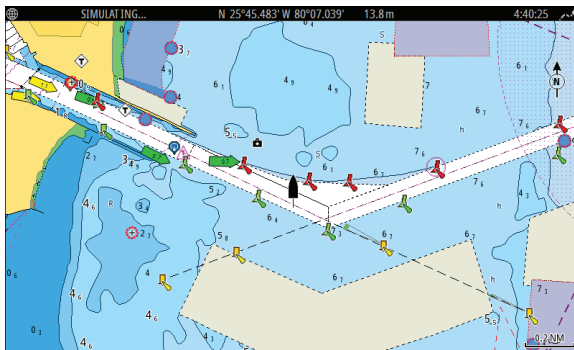
Displaying a page



A Page icons

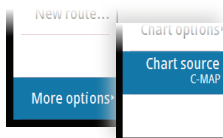
B Predefined split pages

The chart panel

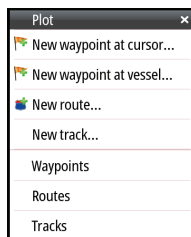
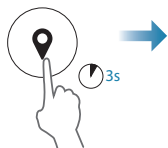


- Zoom the image by using the rotary knob
- Pan the image in any direction by using the Arrow keys
- Display item information by positioning the cursor on an item and then pressing the rotary knob or Enter key

Selecting chart source



Managing waypoints, routes and tracks



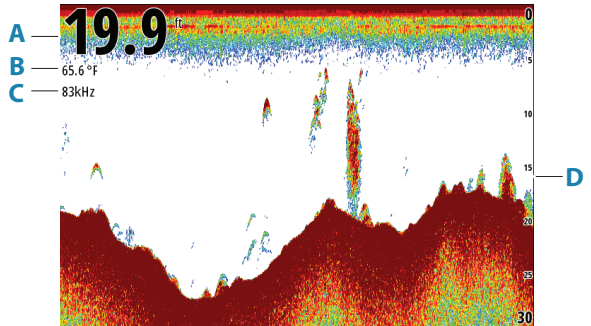
Creating a Man Over Board waypoint

Activate a MOB (Man Over Board) waypoint by simultaneously pressing the Menu and Exit keys.

Cancel the navigation to a MOB waypoint from the menu.



Echosounder page



- A** Depth
- B** Temperature
- C** Frequency
- D** Range scale

Zoom the image using the rotary knob.

→ **Note:** Only supports 83/200 kHz med / high chirp frequencies.