

Installation Procedure

- Installed on glass:
 - SUNVENT could be installed into glass surface. However, as much as possible it should be
 - Installation accessories are included in this package, all you need is just a glasscutter.
- Installed on boat deck / caravan roof:
 - For additional fixing, insert no. 6 screws through the eyelets; it is recommended to use screws made of brass or stainless where salt water is involved.
 - Use suitable mastic to seal the area between plastic ventilator and the surface of installation.
 - For installation purposes, a tubular extension can be use as shown on the right picture.
- Installed on wall:
 - SUNVENT could be installed unto walls or other materials with a thickness greater than 40mm (1 & 9/16 inches).
 - Through the eyelets insert no. 6 screw along with suitable raw plugs. Use tubular with a diameter of 116 ~ 120mm cut required length.

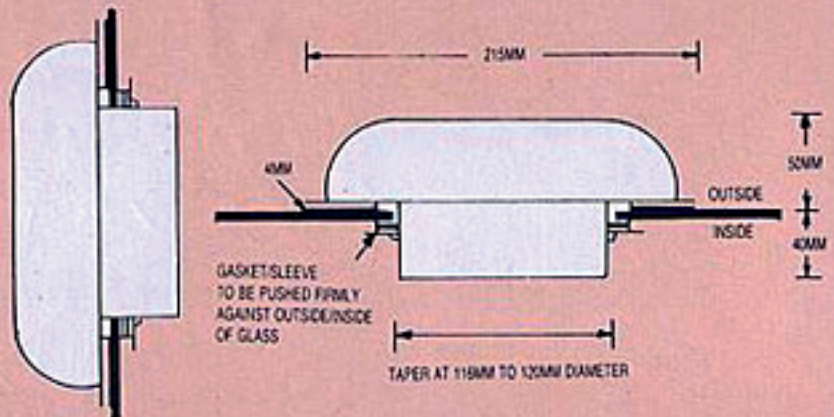
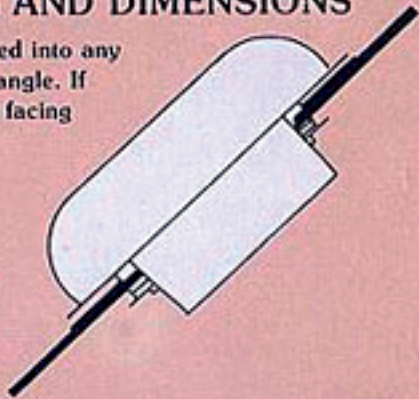
Fixing Instruction



GLASS FIXING AND DIMENSIONS

SUNVENT can be fixed into any surface of glass at any angle. If possible use an equator facing window or roof.

Everything you need to fix the SUNVENT is supplied with the product — all you need to supply is a glass cutter.

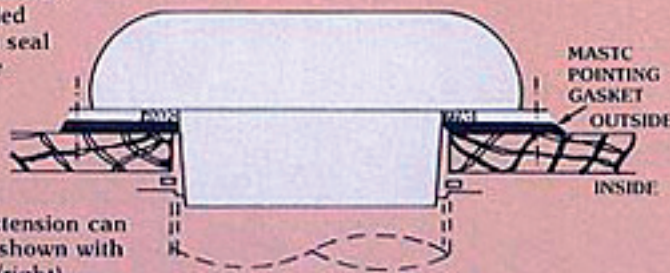


BOAT DECK/CARAVAN ROOF FIXING

Use No. 6 screws (brass or stainless steel recommended where salt water is involved) as necessary, inserted through eyelets to create an additional secure fixing.

Use a suitable, recommended mastic as a seal between the plastic ventilator and the surface being used.

A tube extension can be used as shown with wall fixing (right)



WALL FIXING

SUNVENT can be fixed into a wall or other materials with a thickness greater than 40mm (1 9/16").

Use No. 6 screws with suitable raw plugs, inserted through eyelets. Tube with internal diameter between 116 and 120mm cut to required length.

