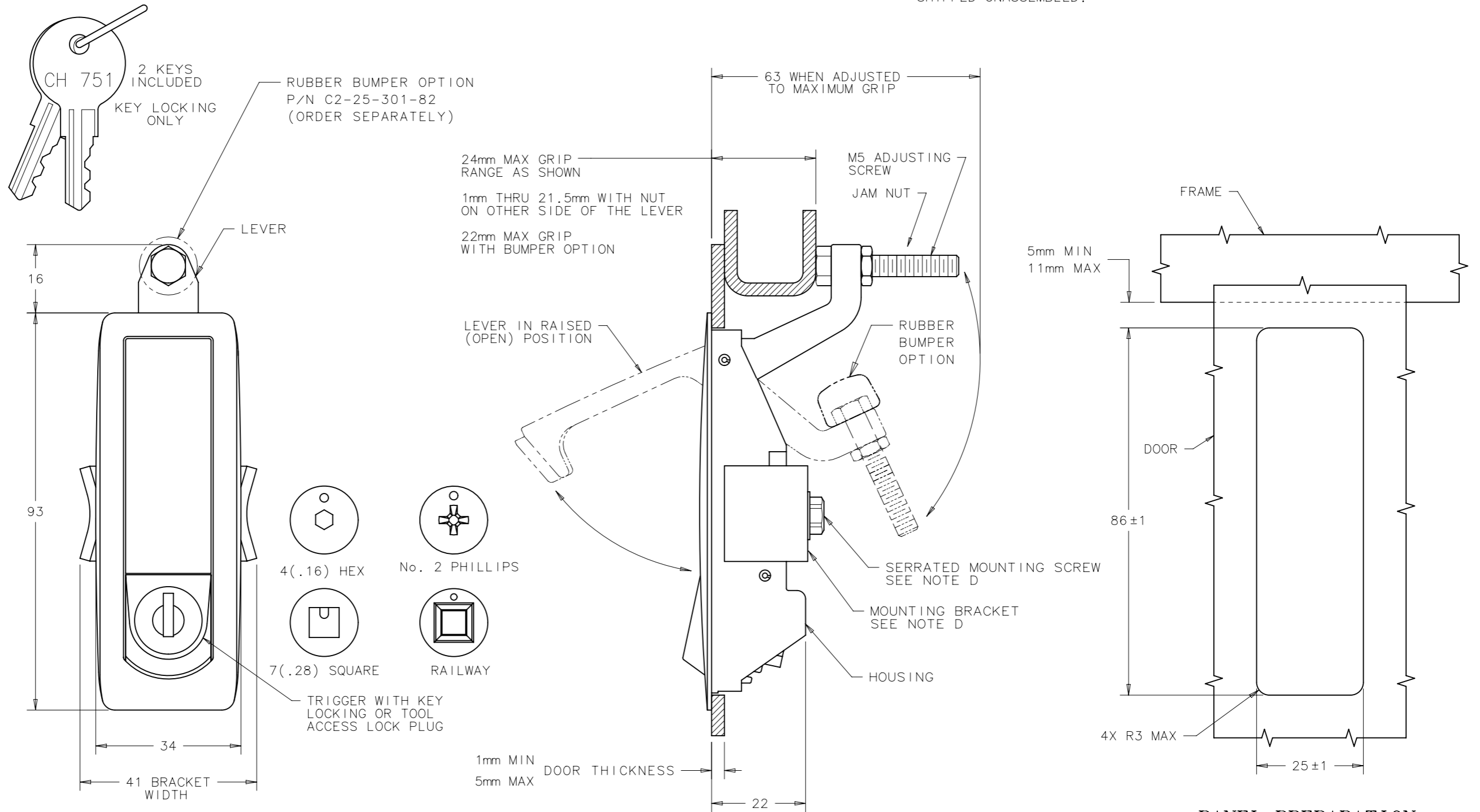


REV	DATE	DRAWN/CHKD	DESCRIPTION	PROPRIETARY ITEM - EXCEPT FOR USES EXPRESSLY GRANTED IN WRITING, INFORMATION DISCLOSED HEREON IS CONFIDENTIAL AND ALL RIGHTS, PATENT AND OTHERWISE ARE RESERVED BY SOUTHCO, INC.	No. C2 LEVER LATCH ASSEMBLY WITH LOCKING RAISED TRIGGER	DATE	DRAWN	CHKD	SCALE	DRAWING NUMBER
						23FEB93	JGK		1:1	J-C2-32-2
K	30APR2003	VNI/MJS	PRN: P2003-0339							MILLIMETERS
L	19JUN2003	RLR/MJS	PRN: P2003-0504							ALL DIMENSIONS WITHOUT TOLERANCES ARE FOR REFERENCE ONLY.
M	13AUG2004	VNI/RLR	PRN: P2004-0893							A3 PAPER SIZE
N	09NOV2004	MDY/RLR	PRN: P2004-1308							THIRD ANGLE PROJECTION
O	23SEP2011	MJS/DM	PRN: P2011-0647							
P	08MAR2012	MJS	PRN: P2012-0322							
Q	23JUL2013	MJS/TVA	PRN: P2013-1498							
R	13AUG2018	CMS/LT	PRN: P2018-1902							

	ASSEMBLY PART NUMBER TABLE		
	BLACK POWDER COATED	TEXTURED CHROME FINISH	SILVER POLYESTER POWDER COATED
KEY LOCKING	C2-32-25	C2-32-21	C2-32-27
4mm HEX RECESS	C2-32-45	C2-32-41	C2-32-47
No. 2 PHILLIPS	C2-32-105	C2-32-101	C2-32-107
7mm SQUARE RECESS	C2-32-115	C2-32-111	C2-32-117
WITHOUT LOCK PLUG	C2-32-135	C2-32-131	C2-32-137
RAILWAY	C2-32-145	C2-32-141	C2-32-147

NOTES:

- A. MATERIAL AND FINISH
 1. HOUSING, LEVER, LOCK PLUG AND TRIGGER: DIE CAST ZINC, SEE ASSEMBLY PART NUMBER TABLE.
 2. U-SPRING: 302 STAINLESS STEEL, PASSIVATED.
 3. TORSION SPRING: 302 STAINLESS STEEL, NATURAL.
 4. SPIROL PIN: SAE 51420, NATURAL
 5. SCREWS AND HEX NUT: LOW CARBON STEEL, ZINC ALLOY PLATE BRIGHT PLUS SEALER.
 6. BRACKET: 1010 STEEL, ZINC ALLOY PLATE BRIGHT PLUS SEALER.
 7. KEYS: BRASS, NICKEL PLATED.
- B. MOUNTING SCREW IS A M5 SCREW. USE LONGER SCREWS (NOT SUPPLIED) FOR THICKER DOORS.
- C. LOCKPLUG INSTALLATION:
 1. POSITION LOCKPLUG AND ORIENT RETAINING WAFER (LAST WAFER LOCATED AT THE BOTTOM OF LOCK) AT THE 3 O'CLOCK POSITION AND INSERT INTO THE TRIGGER.
 2. BE SURE THE LOCKPLUG IS FULLY SEATED AGAINST THE TRIGGER, THEN REMOVE KEY.
- D. MOUNTING BRACKET AND SCREW ASSEMBLY PACKAGED IN PLASTIC BAG, SHIPPED UNASSEMBLED.



PANEL PREPARATION

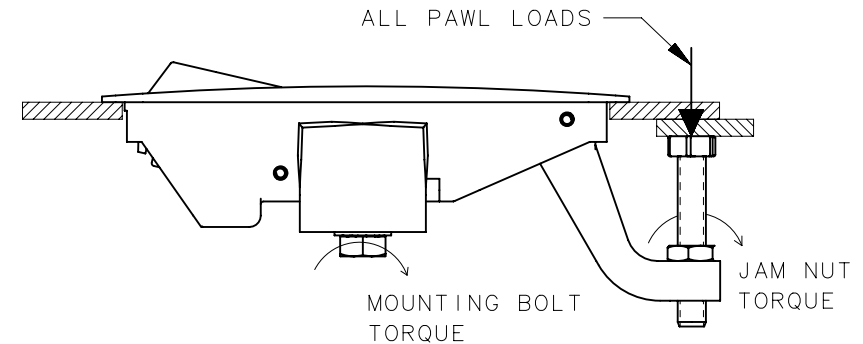
REVISION HISTORY			
REV	DATE	BY	DESCRIPTION
D	25JUL2014	DMS/YGC	PRN: P2014-1482

SOUTHCO PERFORMANCE GUIDELINES

THE PERFORMANCE GUIDELINES SHOWN ON THIS PAGE ARE SUPPLIED AS A GENERAL GUIDE ONLY, AS CONDITIONS VARY WITH EACH APPLICATION AND METHOD OF INSTALLATION. STRENGTH DATA GIVEN IS FOR FAILURE OF THE PRODUCT OR FOR SUFFICIENT DEFORMATION TO MAKE PRODUCT INOPERABLE. NO SAFETY FACTOR HAS BEEN APPLIED IT IS RECOMMENDED THAT THE USER REQUEST A PRODUCT SAMPLE FOR TESTING TO DETERMINE THE SUITABILITY OF THE PRODUCT FOR THE PURPOSE INTENDED AND USER'S PARTICULAR APPLICATION.

PART NUMBER	RECOMMENDED PAWL LOAD (FOR ACTUATION)	MAXIMUM RECOMMENDED PAWL LOAD (IN CLOSED POSITION)	ULTIMATE PAWL LOAD	MAXIMUM MOUNTING BOLT TORQUE	MAXIMUM JAM NUT TORQUE	SALT SPRAY
C2-3X-XX	200 N (45 lbf) ^①	1100 N (250 lbf) ^②	2000 N (450 lbf) ^③	4.5 N.m (40 lbf.in) ^④	7.3 N.m (65 lbf.in) ^⑤	◎ 312 HOURS, BLACK CORROSION FOUND ON ADJUSTMENT SCREWS AND BRACKETS. ◎ 500 HOURS, FINISH STILL INTACT WITH NO LOSS OF FUNCTION
C2-99-217-1XX						

- ① **RECOMMENDED PAWL LOAD (FOR ACTUATION)** IS THE MAXIMUM FORCE APPLIED TO THE PAWL WHICH ALLOWS REASONABLE ACTUATION FORCES FOR THE USER.
- ② **MAXIMUM RECOMMENDED PAWL LOAD (IN CLOSED POSITION)** IS THE MAXIMUM FORCE THAT THE PRODUCT WILL WITHSTAND WITHOUT AFFECTING THE OPERATION OR APPEARANCE OF THE PRODUCT.
- ③ **AVERAGE ULTIMATE PAWL LOAD** CAUSES FAILURE OF THE PRODUCT OR SUFFICIENT DEFORMATION TO MAKE THE PRODUCT INOPERABLE.
- ④ **MAXIMUM MOUNTING BOLT TORQUE** IS THE TORQUE THAT STRIPPED THE HEAD OF THE MOUNTING SCREW.
- ⑤ **MAXIMUM JAM NUT TORQUE** IS THE TORQUE THAT FAILED THE INTERNAL THREADS IN THE PAWL.



REF: trC2-7,8,17,19

	THIRD ANGLE PROJECTION	 CONNECT • CREATE • INNOVATE	
	MILLIMETERS [IN]		
SURFACE AREA	TOLERANCES UNLESS OTHERWISE NOTED	DESCRIPTION C2 ADJUSTABLE LEVER LATCH	
VOLUME	ALL DIMENSIONS WITHOUT TOLERANCES ARE FOR REFERENCE ONLY.	SIZE A4	SYSTEM NX
PROPRIETARY ITEM EXCEPT FOR USES EXPRESSLY GRANTED IN WRITING, INFORMATION DISCLOSED HEREON IS CONFIDENTIAL AND ALL RIGHTS, PATENT AND OTHERWISE, ARE RESERVED BY SOUTHCO, INC.	PER ASME Y14.5M-1994	DWG NO. TD-C2-2-J	
		DRAWN BY ALC/ACZ	DATE 31JAN1994
		SCALE 1:2	SHEET 1 OF 1

Looking for dependable boat cabin and galley? Rely on Southco for quality and long-lasting products.