

REV	DATE	DRAWN/CHKD	DESCRIPTION	PART NUMBER
A	04MAY93	ALC	PRN: S-1-03	F7-73
B	10NOV94	MSB	PRN: F7-30	
C	19OCT2002	AJH/DLH	PRN: P2002-0790	
D	06SEP2016	OMS/JF	PRN: P2016-2050	

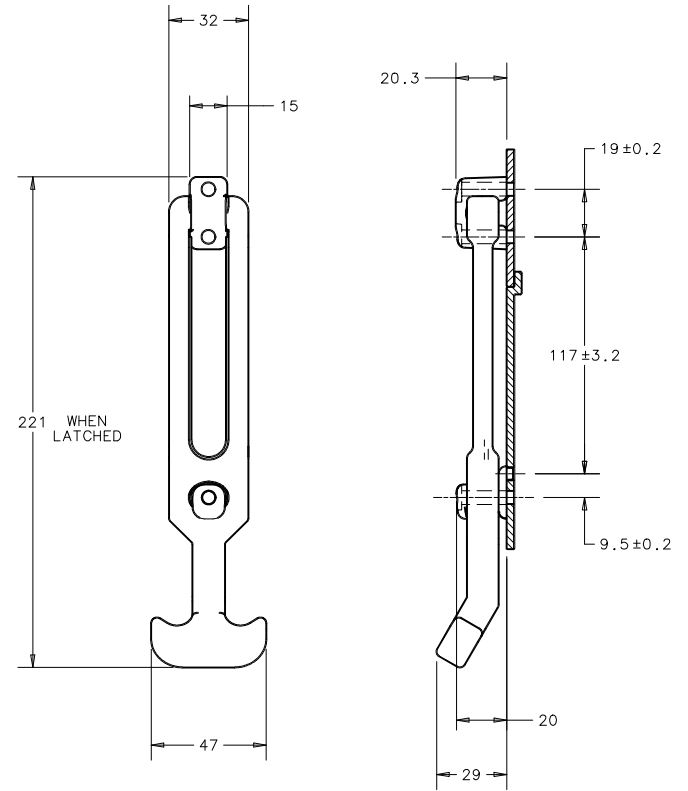
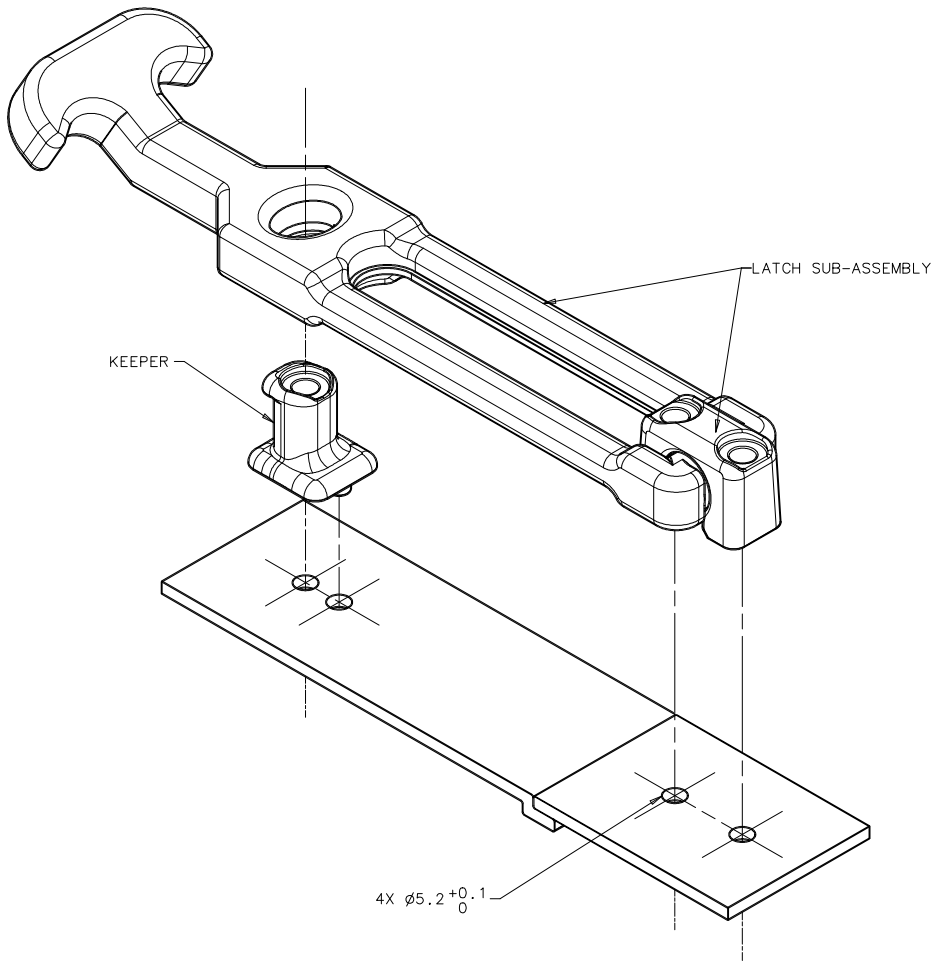
F7 FLEXIBLE DRAW LATCH - CONCEALED MOUNTING (FRONT MOUNTED)

DATE: 8/21/91
DRAWN: JAD
CHKD SCALE: 1:1

DRAWING NUMBER: J-F7-73
MILLIMETERS

ALL DIMENSIONS WITHOUT TOLERANCES ARE FOR REFERENCE ONLY.

A3 PAPER SIZE
THIRD ANGLE PROJECTION



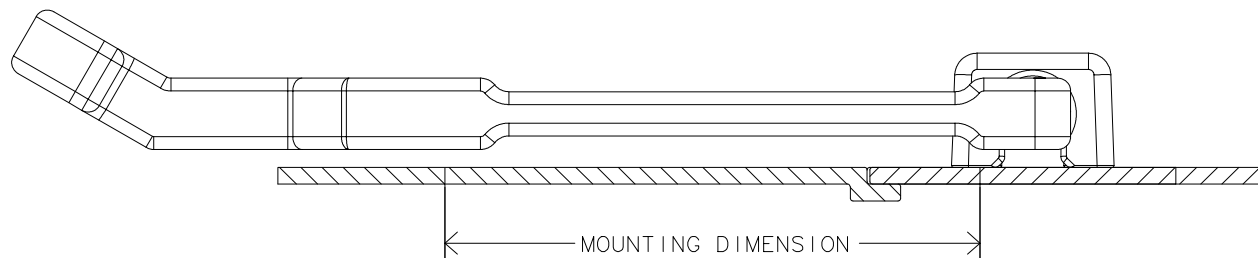
INSTALLED VIEWS
(SCALE .5:1)

- NOTES:
- LATCH ASSEMBLY CONSISTS OF:
SUB-ASSEMBLY:
HANDLE - TPE, BLACK
BRACKET - G.R. NYLON, BLACK.
KEEPER - G.R. NYLON, BLACK
 - LATCH SUB-ASSEMBLY AND KEEPER SHIPPED SEPARATELY, BULK. FOR LATCHES PACKAGED ONE PER BAG, ADD -P TO PART NUMBER.
 - MOUNT USING (3) No. 10/M5 SCREWS OR 3/16 - 5mm RIVETS (NOT SUPPLIED).

REV	DATE	DRAWN/CHKD	DESCRIPTION
A	09APR2002	GDM	UPDATE FORMAT
B	08JAN2004	MJS	SEE ENSTAR JOB 1298



SOUTHCO PERFORMANCE GUIDELINES
 THE PERFORMANCE GUIDELINES SHOWN ON THIS PAGE ARE SUPPLIED AS A GENERAL GUIDE ONLY, AS CONDITIONS VARY WITH EACH APPLICATION AND METHOD OF INSTALLATION. STRENGTH DATA GIVEN IS FOR FAILURE OF THE PRODUCT OR FOR SUFFICIENT DEFORMATION TO MAKE PRODUCT INOPERABLE. NO SAFETY FACTOR HAS BEEN APPLIED IT IS RECOMMENDED THAT THE USER REQUEST A PRODUCT SAMPLE FOR TESTING TO DETERMINE THE SUITABILITY OF THE PRODUCT FOR THE PURPOSE INTENDED AND USER'S PARTICULAR APPLICATION.



LATCH PART NUMBER F7-7XX

MOUNTING DIMENSIONS mm (inch)	AVERAGE CLAMPING FORCES VS TIME AND TEMPERATURE N (lbf)	
	23°C (73°F)	
	INITIAL ①	STEADY STATE ②
113.8 (4.48)	97 (22)	80 (18)
117.0 (4.60)	126 (28)	104 (23)
120.2 (4.73)	136 (31)	112 (25)
MAXIMUM TIGHTENING TORQUE N·m (lbf·in)		2.0 (18)

① THE INITIAL CLAMPING FORCE IS THE FORCE APPLIED TO THE PANEL WHEN HANDLE AND KEEPER ARE LATCHED.

② THE STEADY STATE CLAMPING FORCE IS THE DESIGN FORCE OF THE LATCH MEASURED AFTER THE INITIAL FORCE HAS RELAXED. THIS OCCURS OVER A TEST PERIOD OF APPROXIMATELY 24 HOURS AT ROOM TEMPERATURE.