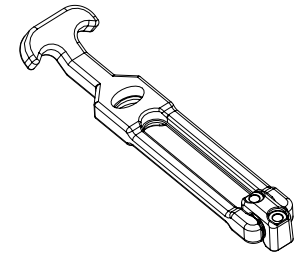
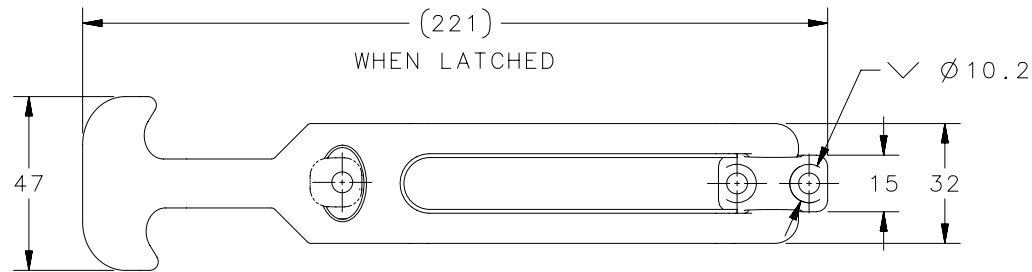
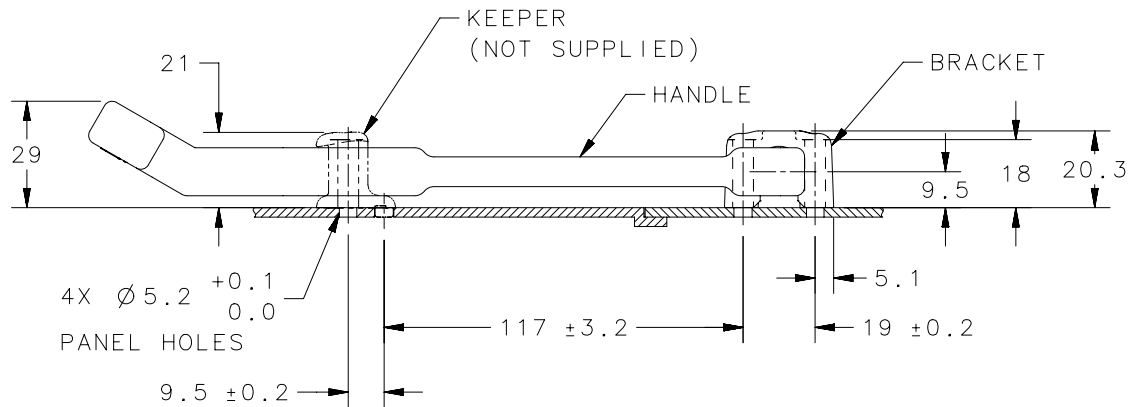


REVISION HISTORY			
REV	DATE	BY	DESCRIPTION
A	27NOV2014	DMS/YGC	PRN: P2014-2423



SCALE 1:4



NO.	PART NUMBER	QTY	TYPE OF COMPONENT	MATERIAL	FINISH
2	-	1	HANDLE	T.P.E.	BLACK
1	-	1	BRACKET	G.R. NYLON	BLACK
-	F7-730	-	LATCH SUBASSEMBLY	-	-

NOTES:

1. MOUNT USING(3) M5 (NO.10), SCREWS OR $\varnothing 5(3/16)$ RIVETS (NOT SUPPLIED).
2. NOTED DIMENSIONS ARE NOT TO SCALE AND REPRESENT DISTANCE WHEN FLEXIBLE DRAW LATCH HANDLE IS STRETCHED TO LATCHED POSITION OVER THE KEEPER.

THIRD ANGLE PROJECTION					
INCHES [MM]					
SURFACE AREA		TOLERANCES UNLESS OTHERWISE NOTED		DESCRIPTION	
VOLUME		ALL DIMENSIONS WITHOUT TOLERANCES ARE FOR REFERENCE ONLY.		NUMBER F7 FLEXIBLE Draw Latch FRONT MOUNTING	
PROPRIETARY ITEM		SIZE	SYSTEM	DWG NO.	
EXCEPT FOR USES EXPRESSLY GRANTED IN WRITING, INFORMATION DISCLOSED HEREON IS CONFIDENTIAL AND ALL RIGHTS, PATENT AND OTHERWISE, ARE RESERVED BY SOUTHCO, INC.		A	NX	J-F7-730	
PER ASME Y14.5M-1994		DRAWN BY	DATE	SCALE	SHEET
		DMS/YGC	27NOV2014	1:2	1 OF 1