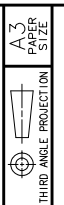


REV	DATE	DRWN/CHKD	DESCRIPTION
A	03NOV2004	JWJ/AJH	PRN: P2004-1280
B	21MAR2005	JWJ/VNI	PRN: P2005-0366
C	24JUN2005	DJK/RLR	PRN: P2005-0858
D	08DEC2005	AAB/MDY	PRN: P2005-1759
E	19OCT2012	CMS/MP	PRN: P2012-1410

MILLIMETERS [INCHES]
MILLIMETERS [INCHES]

ALL DIMENSIONS WITHOUT TOLERANCES ARE FOR REFERENCE ONLY.



PANEL THICKNESS	GRIP		SHORT REACH PART NUMBER	LONG REACH PART NUMBER
	MIN	MAX		
2 TO 12 [.075 TO .475]	21 [1.83]*	28 [1.10]*	M1-20-X1-58	M1-20-X1-88
	27 [1.06]*	40 [1.57]	M1-20-X1-48	M1-20-X1-78
	39 [1.53]	52 [2.04]	M1-20-X1-38	M1-20-X1-68
	51 [2.01]	64 [2.52]	M1-20-X1-48	M1-20-X1-78
	63 [2.48]	76 [3.00]	M1-20-X1-58	M1-20-X1-88
12 TO 22.5 [.475 TO .885]	21 [1.83]*	28 [1.10]*	M1-20-X2-58	M1-20-X2-88
	27 [1.06]*	40 [1.57]	M1-20-X2-48	M1-20-X2-78
	39 [1.53]	52 [2.04]	M1-20-X2-38	M1-20-X2-68
	51 [2.01]	64 [2.52]	M1-20-X2-48	M1-20-X2-78
	63 [2.48]	76 [3.00]	M1-20-X2-58	M1-20-X2-88
18.5 TO 29 [.73 TO 1.14]	21 [1.83]*	28 [1.10]*	M1-20-X3-58	M1-20-X3-88
	27 [1.06]*	40 [1.57]	M1-20-X3-48	M1-20-X3-78
	39 [1.53]	52 [2.04]	M1-20-X3-38	M1-20-X3-68
	51 [2.01]	64 [2.52]	M1-20-X3-48	M1-20-X3-78
	63 [2.48]	76 [3.00]	M1-20-X3-58	M1-20-X3-88

* SEE NOTE A

NOTES:

A. GRIPS UNDER 35 [1.38] ARE AFFECTED BY PANEL THICKNESS. USE THE FOLLOWING CHART TO DETERMINE YOUR MINIMUM GRIP BY ADDING THE OFFSET VALUE TO YOUR PANEL THICKNESS:

PART NUMBER	OFFSET VALUE
M1-20-X1-48	19 [.75]
M1-20-X1-58	
M1-20-X1-78	
M1-20-X1-88	9 [.35]
M1-20-X2-48	
M1-20-X2-58	
M1-20-X2-78	
M1-20-X2-88	2.5 [.10]
M1-20-X3-48	
M1-20-X3-58	
M1-20-X3-88	

MATERIAL AND FINISH

ALL VERSIONS:

- HANDLE: CF-8M STAINLESS STEEL (NOMINAL CAST EQUIVALENT OF 316 STAINLESS STEEL), ELECTROPOLISHED
- PINS AND PAWLS: 302 STAINLESS STEEL, PASSIVATED
- STUD AND JAM NUTS: 316 STAINLESS STEEL, PASSIVATED
- WEAR WASHER: NYLON, GRAY
- O-RINGS: BUNA-N, NATURAL
- SPRING AND SCREWS: 300 SERIES STAINLESS STEEL, PASSIVATED
- SLEEVE: ACETAL, BLACK
- GASKET: NEOPRENE, BLACK

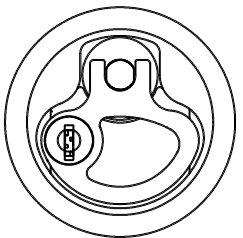
LOCKING ONLY:

- LOCKPLUG: CF-8M STAINLESS STEEL
- RETAINER: 301 STAINLESS STEEL, PASSIVATED
- LOCKPLUG O-RING: BUNA-N, NATURAL
- KEYS: 300 SERIES STAINLESS STEEL

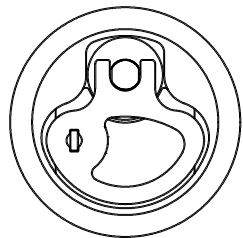
KEY LOCKING ONLY:

- LOCKPLUG BODY: 316 STAINLESS STEEL
- RETAINER: 301 STAINLESS STEEL
- WAFERS: BRASS
- SPRINGS: 300 SERIES STAINLESS STEEL
- KEYS: BRASS, NICKEL PLATED; OVERMOLD: ABS PLASTIC

- B. X = 3 - NON LOCKING (ROUND HOUSING ONLY)
 X = 8 - LOCKING (ROUND HOUSING ONLY)
 X = 9 - KEY LOCKING (ROUND HOUSING ONLY)

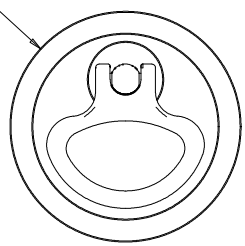


LATCH ASSEMBLY (KEY LOCKING)

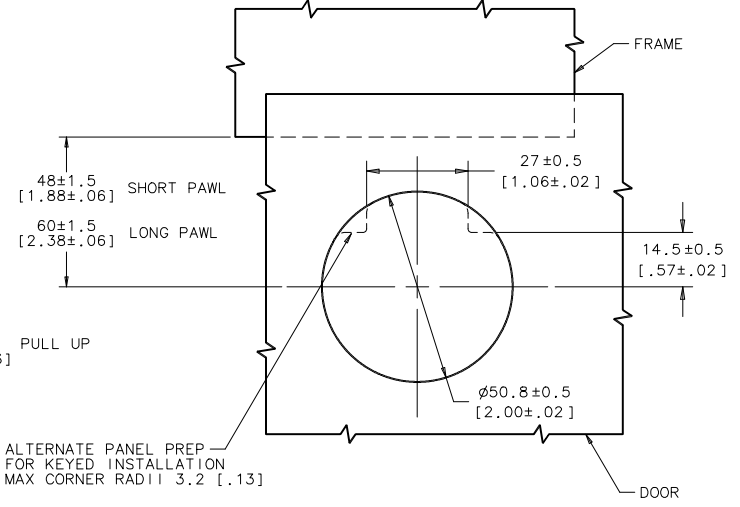
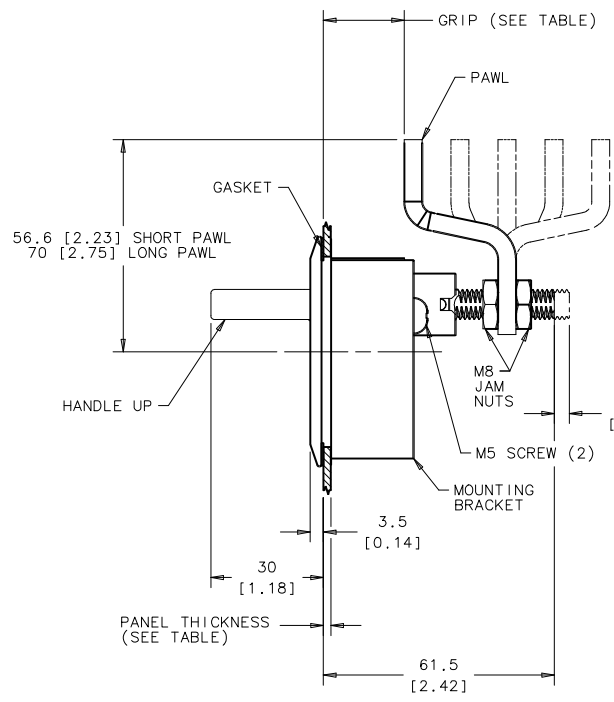


LATCH ASSEMBLY (LOCKING)

ø61.3 [2.41]



LATCH ASSEMBLY (NON-LOCKING)



PANEL PREPARATION

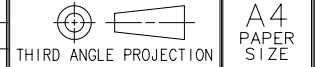


PROPRIETARY ITEM - EXCEPT FOR USES EXPRESSLY GRANTED IN WRITING INFORMATION DISCLOSED HEREON IS CONFIDENTIAL AND ALL RIGHTS PATENT AND OTHERWISE ARE RESERVED BY SOUTHCO, INC.

2 INCH M1 COMPRESSION LATCH ASSEMBLY

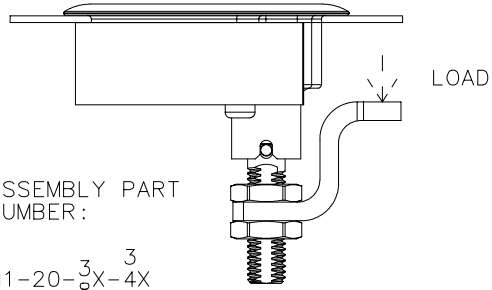
DATE	DRAWN	CHKD	SCALE	DRAWING NUMBER
24APR2003	MJS	MF	NTS	TD-M1-04-J

REV	DATE	DRAWN/CHKD	DESCRIPTION
A	27AUG2004	MJS	SEE ENSTAR REQUEST No.2424



SOUTHCO PERFORMANCE GUIDELINES
 THE PERFORMANCE GUIDELINES SHOWN ON THIS PAGE ARE SUPPLIED AS A GENERAL GUIDE ONLY, AS CONDITIONS VARY WITH EACH APPLICATION AND METHOD OF INSTALLATION. STRENGTH DATA GIVEN IS FOR FAILURE OF THE PRODUCT OR FOR SUFFICIENT DEFORMATION TO MAKE PRODUCT INOPERABLE. NO SAFETY FACTOR HAS BEEN APPLIED IT IS RECOMMENDED THAT THE USER REQUEST A PRODUCT SAMPLE FOR TESTING TO DETERMINE THE SUITABILITY OF THE PRODUCT FOR THE PURPOSE INTENDED AND USER'S PARTICULAR APPLICATION.

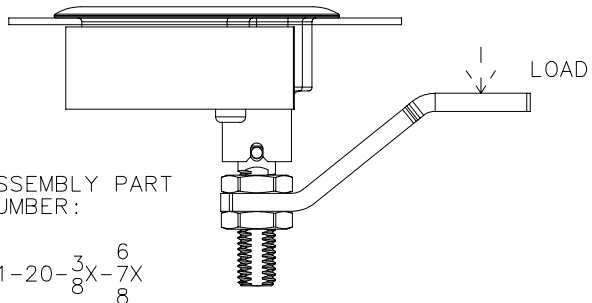
SHORT PAWL



ASSEMBLY PART NUMBER:
 M1-20- $\frac{3}{8}$ X-4X
 $\frac{3}{5}$

	SHORT PAWL	LONG PAWL
AVERAGE ULTIMATE LOAD ON PAWL	745 N (167 lbf)	535 N (120 lbf)
MAXIMUM RECOMMENDED WORKING LOAD	110 N (25 lbf)	110 N (25 lbf)

LONG PAWL



ASSEMBLY PART NUMBER:
 M1-20- $\frac{3}{8}$ X-7X
 $\frac{6}{8}$

CYCLE LIFE:
 -GREATER THAN 2,500 CYCLES AT 110 N (25 lbf) COMPRESSION LOAD.

MAXIMUM WORKING LOAD - THE MAXIMUM RECOMMENDED LOAD AT WHICH THE PRODUCT CONTINUES TO FUNCTION PROPERLY.

AVERAGE ULTIMATE LOAD - THE LOAD THAT CAUSES FAILURE OR EXCESSIVE DEFORMATION WHICH RENDERS THE PRODUCT INOPERABLE.

REF: M1-51

Looking for dependable boat cabin and galley? Rely on Southco for quality and long-lasting products.