

TACO[®]
MARINE



SPORT
FISHING
CATALOG

TROLL THE EDGE



ABOUT



TACO MARINE

Founded in 1959, TACO is an established marine manufacturer and the #1 sport fishing brand for Outrigger and Center Rigger Mounts, Telescoping Outrigger Poles, Rigging Kits and Accessories.

Like, subscribe and follow us on YouTube, Facebook, Instagram and Twitter, where we post regular sport fishing content and engaging how-to videos.

TABLE OF CONTENTS

- 4** ShadeFin™
- 6** Outrigger Mounts & Poles
- 17** Outrigger Accessories
- 20** Rigging Kits & Components
- 23** Rod Holders
- 29** Dockside Accessories
- 32** Cup Holders
- 33** VHF Antenna Mounts
- 34** Masthead Anchor Lights
- 35** Rigging Instructions
- 37** Website & Social

TACO[®]
Handy Tips

Helpful tips from sport fishing pros.



Insights into TACO products.

NEW

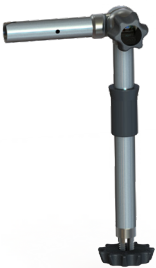
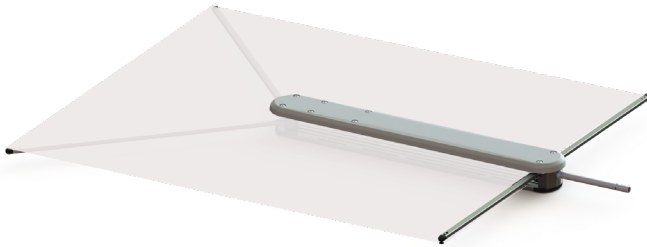


Add an extra layer of sun protection with ShadeFin™ by TACO Marine - a new product that easily attaches into rod holders, tops and gunnels for convenient, portable shade for almost any boat.

ShadeFin's ocean-inspired design provides expanded shade coverage for multiple areas of the boat, including fore, aft and sides of tops or anywhere there is a rod holder.

ShadeFin's fabric provides an excellent UPF 50+ rating of sun protection while boating and fishing, or when relaxing at the dock and sand bar. To anticipate the needs of many boaters, ShadeFin comes with or without a Fixed Rod Holder Mount, which inserts into any standard rod holder. Additionally, sold-separately mounting options include an Adjustable Rod Holder Mount, a Clamp-On Mount for pipe or tube, a Telescopic Rod Holder Accessory or a Hardtop Bracket Mount.

ShadeFin's body houses the ribs and material, and is offered in black or white. A protective mesh storage sleeve comes standard with ShadeFin. To operate ShadeFin, remove the sleeve, mount to a desired location onboard and activate the underside release tabs. Structural ribs attached to weather-resistant sun-protecting fabric expand out from the body to lock the fin in place.



T10-3000-6



T10-3000-7



T10-3000-11



T10-3000-5



- ▶ Patent # 10, 604, 214
- ▶ T10-3000-7 and T10-3000-11 patent # 7309054 B2
- ▶ T10-3000-5 and T10-3000-6 patent pending
- ▶ Light, compact and portable
- ▶ Easily mounts into any standard rod holder
- ▶ Kit comes with a Fixed Rod Holder Mount
- ▶ Adjustable Rod Holder Mount options available
- ▶ Clamp-on mounting options available for 3/4", 1" schedule-40 pipe and 1-1/4" O.D. tube
- ▶ Also works with Grand Slam 170 Outrigger and Grand Slam 170-2 Center Rigger Mounts
- ▶ Large coverage area of 5' X 6'
- ▶ UPF (Ultraviolet Protection Factor) rating of 50+ ("Excellent" rating)
- ▶ Made of high-quality anodized aluminum parts
- ▶ Includes mesh carry and stow bag

PART NUMBER	DESCRIPTION
-------------	-------------

T10-3000-1	ShadeFin w/ White Fabric & Bag (No Mount)
T10-3000-2	ShadeFin w/ Black Fabric & Bag (No Mount)
T10-3000-3	ShadeFin w/ White Fabric, Bag & Fixed Rod Holder Mount Kit
T10-3000-4	ShadeFin w/ Black Fabric, Bag & Fixed Rod Holder Mount Kit
T10-3000-5	Fixed Rod Holder Mount
T10-3000-6	Adjustable Rod Holder Mount
T10-3000-7	Adjustable Clamp-On Mount 3/4" & 1" schedule-40 pipe, 1-1/4" O.D. tube
T10-3000-9	Telescopic Rod Holder Accessory
T10-3000-10	Hardtop Bracket Mount
T10-3000-11	Fixed Clamp-On Mount 3/4" & 1" schedule-40 pipe, 1-1/4" O.D. tube
GS-170	Grand Slam 170 Outrigger Mount
GS-170-2	Grand Slam 170-2 Center Rigger Mount

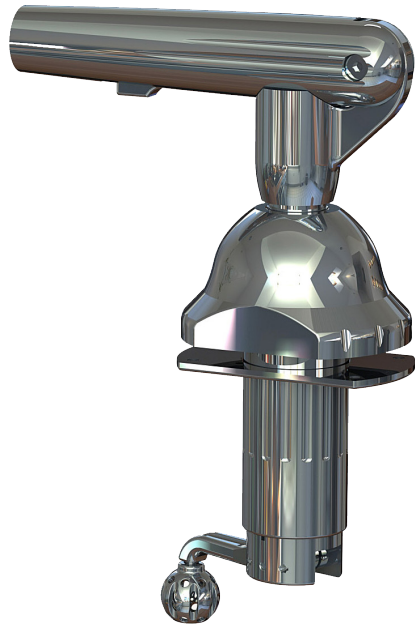
PRO SERIES GS-550 OUTRIGGER MOUNT



NEW

The Pro Series GS-550 Base is a revolutionary outrigger mount that enables one-handed, smooth operation for vertical lift and horizontal rotation from the deck - making deploying outriggers easier and safer than ever. Developed for high-performance boats, the GS-550 is all stainless steel, which provides a more finessed and sleek appearance. The arm of the GS-550 adjusts as high as 70° for additional dock and kite fishing clearance.

- ▶ Easy, one-handed operation to safely adjust lift and rotation from the deck
- ▶ All high-polish Type-316L stainless-steel components
- ▶ Planetary gear operation for controlled deployment - eliminating the threat of losing control of the outrigger
- ▶ Extended height adjustment for additional dock and kite fishing clearance
- ▶ Accepts 1-1/2" diameter pin-locking Tele-Outriggers in Aluminum or Carbon Fiber up to 24'
- ▶ Includes reversible backing plates for additional support and strength
- ▶ Easy installation with preferred fastener orientation
- ▶ Sold in pairs



PART NUMBER

DESCRIPTION

GS-550

Pro Series GS-550 Outrigger Mount

PRO SERIES GS-400 OUTRIGGER MOUNT



- ▶ Heavy-duty base and arm with 30° offset handle
- ▶ Handles additional torque and whip from outrigger poles up to 24'
- ▶ Pairs with 1-1/2" Tele-Outriggers
- ▶ Strong, locking head allows perfect positioning
- ▶ Allows for horizontal rotation from under the T-top
- ▶ Includes matching 6"x 8"x 1/2" thick oval backing plates for additional support and strength
- ▶ Sold in pairs



The GS-400 features TACO's Spline Lock technology, which is an engineered mechanism that allows multiple adjustment positions and prevents slippage while securing outriggers at the desired height position for increased reliability and performance.

PART NUMBER	DESCRIPTION
GS-400	Pro-Series GS-400 Outrigger Mount

SOLD SEPARATELY



OT-0318HD
18' Deluxe Aluminum
Tele-Outriggers



OT-CF Series
16' & 20' Carbon Fiber
Tele-Outriggers



OT Series
15' & 18' Aluminum
Tele-Outriggers

GRAND SLAM 390 OUTRIGGER MOUNT



- Stronger gusset support and thicker arm for enhanced durability
- Elevation crank handle provides lift from under the T-top
- Allows for horizontal rotation from under the T-top
- 30° offset handle for better hand clearance
- Pairs with 1-1/2" Tele-Outriggers
- Also available as the GS-390-180 with a fore-facing rotation handle for tops that require additional hand clearance
- Available as the GS-390XL for hardtops up to 4-1/2" thick
- Sold in pairs



The GS-390 is the evolution of the popular Grand Slam 380 Outrigger Mount.

PART NUMBER	DESCRIPTION
GS-390	Grand Slam 390 Outrigger Mount
GS-390XL	Grand Slam 390XL Outrigger Mount
GS-390-180	Grand Slam 390-180 Outrigger Mount

SOLD SEPARATELY



OT-0318HD
18' Deluxe Aluminum
Tele-Outriggers



OT-CF Series
16' & 20' Carbon Fiber
Tele-Outriggers



OT Series
15' & 18' Aluminum
Tele-Outriggers

GRAND SLAM 280 & 2801 OUTRIGGER MOUNTS



- ▶ Tested and proven quality with a sleek appearance
- ▶ Compatible with 1-1/2" Tele-Outrigger Poles and the 1-1/8" Tele-Outrigger Poles with the addition of the GSC-0025 Base Reducer
- ▶ Strong, locking head allows perfect positioning
- ▶ Allows for horizontal rotation from under the T-top
- ▶ GS-2801 features a 30° offset handle for greater hand clearance
- ▶ Sold in pairs



GS-280

GS-2801



The GS-280 and GS-2801 feature TACO's Spine Lock technology, which is an engineered mechanism that allows multiple adjustment positions and prevents slippage while securing outriggers at the desired height position for increased reliability and performance.

PART NUMBER	DESCRIPTION
GS-280	Grand Slam 280 Outrigger Mount
GS-2801	Grand Slam 2801 Outrigger Mount

SOLD SEPARATELY



OT Series
15' & 18' Aluminum
Tele-Outriggers



RK-0001PB
Premium Rigging Kit



GSC-0025
Outrigger Base Reducer

GRAND SLAM 170 OUTRIGGER MOUNT



- ▶ Compatible with 1-1/8" Tele-Outrigger Poles and ShadeFin
- ▶ GS-170 adds up to 30' of fishing spread or 5' x 6' area of shade
- ▶ Sure-Grip knob allows lift adjustments every 18°
- ▶ Locking lever secures out-bound rotation to desired location
- ▶ Delrin bearings allow for smooth, secure operation
- ▶ Easy installation with the outrigger-ready mounting plates
- ▶ Sold in pairs



The GS-170 features TACO's Spline Lock technology, which is an engineered mechanism that allows multiple adjustment positions and prevents slippage while securing outriggers at the desired height position for increased reliability and performance.

PART NUMBER	DESCRIPTION
GS-170	Grand Slam 170 Outrigger Mount

SOLD SEPARATELY



OT Series
15' Aluminum
Tele-Outriggers



RK-0001SB
Standard Rigging Kit



F40-0030
Outrigger Line Caddy

GRAND SLAM 312 CENTER RIGGER MOUNT



The addition of the Grand Slam 312 Center Rigger Mount to your outrigger arsenal allows you to run the shotgun bait out of site. This heavy-duty mount is not only designed to raise and lower the mount from under the T-top, but eliminates the dangerous act of climbing on the back of your leaning post.

- ▶ Patent number US7114283
- ▶ Elevation Crank Handle provides lift from under the T-top
- ▶ Uses standard 1-1/2" center rigger poles
- ▶ Built to handle 16' Carbon Fiber Center Rigger Pole
- ▶ Sold individually



PART NUMBER	DESCRIPTION
GS-312	Grand Slam 312 Center Rigger Mount

SOLD SEPARATELY



OT-2160CF
Carbon Fiber Center Rigger



RK-0001PCB
Center Rigging Kit

GRAND SLAM 170-2 CENTER RIGGER



The Grand Slam 170-2 is the industry standard for center rigger mounts. Used on center consoles to allow a “way-back” bait presentation, it is the perfect addition to your boat’s offshore display. Its easy installation and attractive appearance will make your days on the water more productive.

- ▶ Compatible with 1-1/8” Center Rigger Pole and ShadeFin
- ▶ Stainless-steel and Anodized Aluminum construction
- ▶ Sure-Grip knob allows lift adjustments every 18°
- ▶ Delrin bearings allow for smooth, secure operation
- ▶ Easy installation with the center rigger-ready mounting plate
- ▶ Sold individually



PART NUMBER	DESCRIPTION
GS-170-2	Grand Slam 170-2 Center Rigger Mount

SOLD SEPARATELY



OC Series
8' & 12' Aluminum
Center Rigger Poles



RK-0001PCB
Center Rigging Kit

STRIKER BASE GUNNEL MOUNT



- ▶ Unique Hex nut locking design offers multiple fishing positions
- ▶ Ambidextrous 45° arm ideal for trolling from gunnel
- ▶ Removable arm allows for unobstructed gunnels
- ▶ Pairs with 1-1/2" or 1-1/8" Outrigger Poles
- ▶ Sold in pairs



TACO® Handy Tips

Cut a 45° hole for installation. Use a 1-1/2" or 2" hole saw to cut the 45° angle, then file as needed to get a perfect fit. Use a marine-grade sealant under the plate for a watertight seal.

PART NUMBER	DESCRIPTION	BASE	BASE DIM.	ID
F16-0150-F	Gunnel mount w/45°Arm	5-3/4" x 3-7/8" x 3/8"	1-1/2"	1-1/2"
F16-0212-F	Gunnel mount w/45°Arm	5-1/8" x 2-5/8" x 3/16"	1-1/8"	1-1/8"

SOLD SEPARATELY

M17-1564P-4
Replacement 45° Arm for F16-0212-F



M17-1564P-6
Replacement 45° Arm for F16-0150-F

CENTER RIGGER FIXED MOUNT

- ▶ Patent # 7309054 B2
- ▶ Easily installed on your existing T-top piping
- ▶ Polished, high-quality stainless steel Type-316L
- ▶ Allows for exact positioning
- ▶ Features anti-rotation set screw
- ▶ Pairs with 8' and 12' Center Rigger Poles
- ▶ Fits Securely with 3/4" and 1" schedule-40 pipe and 1-1/4" O.D. tube.
- ▶ Sold individually



PART NUMBER	DESCRIPTION	HEIGHT	WIDTH
F16-0311C-1	Clamp-On Center Rigger Fixed Mount	7-1/2"	2-1/8"

CARBON FIBER TELE-OUTRIGGERS & CENTER RIGGER POLE

- ▶ UV-resistant, clear-coated black carbon fiber pole construction
- ▶ Pin-locking butt design
- ▶ Double outrigger line design on the 16' poles, triple line design on the 20' poles and quadruple line design on the 24' poles
- ▶ Twist & Lock arm required for 24' poles listed in product table below
- ▶ Patent-pending 360° swivel collar design allows for a more natural movement of bait and less halyard line friction
- ▶ Telescopes to less than 8' for bridge clearance and trailering
- ▶ 24' poles telescope to less than 9'
- ▶ Locking pin design keeps poles from collapsing when fully extended and allows for easy collapsing
- ▶ Includes adjustable roller line caddy with brass rollers - allowing for easy rigging to the T-Top or gunnel and better line management



PART NUMBER	DESCRIPTION
OT-3160CF	1-1/2" Black w/Silver Rings & Tips, 16'
OT-4200CF	1-1/2" Black w/Silver Rings & Tips, 20'
OT-4240CF-HD	1-1/2" Twist & Lock Tele-Outrigger Poles, 24'
OT-2120CF	1-1/8" Center Rigger Black w/Silver Rings & Tips, 10'
OT-2160CF	1-1/2" Center Rigger Black w/Silver Rings & Tips, 16'

SOLD SEPARATELY



F16-0204
Outrigger Line Tensioner



RK-0002PB
Premium Double
Rigging Kit



RK-0003PB
Premium Triple Braid
Rigging Kit

18' DELUXE ALUMINUM TELE-OUTRIGGERS

Designed for offshore trolling in search of bigger fish, these poles have a thicker wall for enhanced durability and feature patent-pending 360° swivel collars for better natural bait presentation and reduced halyard friction. The Deluxe Poles telescope below 8' for trailering and bridge clearance and extend to 18' - increasing the strike zone when fishing.



- ▶ 3-piece telescopic pole with pin-locking butt design
- ▶ Fits standard 1-1/2" bases
- ▶ Solid Delrin support bearings
- ▶ Linear lock pins for easy operation
- ▶ Easily collapsed and stowed
- ▶ Roller bearing halyard pulleys
- ▶ Additional swivel collar to separate halyard lines
- ▶ Corrosion resistant
- ▶ Designed for use with our GS-280, GS-2801, GS-390, GS-400 and GS-550 Outrigger Mounts



PART NUMBER	DESCRIPTION
OT-0318HD-VEL	1-1/2" Silver w/Silver Rings & Tips, 18'
OT-0318HD-BKA	1-1/2" Black w/Silver Rings & Tips, 18'

SOLD SEPARATELY



F16-0204
Outrigger Line Tensioner



RK-0002MP
Premium Double Mono Rigging Kit



RK-0003MP
Premium Triple Mono Rigging Kit

ALUMINUM TELE-OUTRIGGERS & CENTER RIGGER POLES



- Designed for universal use with TACO Marine Grand Slam Outrigger Mounts, Striker Bases and Center Rigger Mounts that accept 1-1/2" or 1-1/8" outriggers
- Telescopes to less than 6' for bridge clearance and trailering
- Locking pin feature for secure placement when extended
- 15' Tele-Outrigger Poles are perfect for boats up to 30'
- 18' Tele-Outrigger Poles are perfect for boats up to 35'
- 8' Center Rigger Pole is perfect for boats up to 30'
- 12' Center Rigger Pole is perfect for boats up to 40'



PART NUMBER	LENGTH	DIAMETER	COLOR
OT-0441BKA15	15'	1-1/8"	Black W/ Gold Rings & Tips
OT-0441VEL15	15'	1-1/8"	Silver W/ Gold Rings & Tips
OT-0442BKA15	15'	1-1/8"	Black W/ Silver Rings & Tips
OT-0442VEL15	15'	1-1/8"	Silver W/ Silver Rings & Tips
OT-0541BKA15-HD	15'	1-1/2"	Black W/ Gold Rings & Tips
OT-0541VEL15-HD	15'	1-1/2"	Silver W/ Gold Rings & Tips
OT-0542BKA15-HD	15'	1-1/2"	Black W/ Silver Rings & Tips
OT-0542VEL15-HD	15'	1-1/2"	Silver W/ Silver Rings & Tips
OT-0551BKA186	18'	1-1/2"	Black W/ Gold Rings & Tips
OT-0551VEL186	18'	1-1/2"	Silver W/ Gold Rings & Tips
OT-0552BKA186	18'	1-1/2"	Black W/ Silver Rings & Tips
OT-0552VEL186	18'	1-1/2"	Silver W/ Silver Rings & Tips
OC-0421BKA8	8'	1-1/8"	Black W/ Gold Rings & Tips
OC-0421VEL8	8'	1-1/8"	Silver W/ Gold Rings & Tips
OC-0422BKA8	8'	1-1/8"	Black W/ Silver Rings & Tips
OC-0422VEL8	8'	1-1/8"	Silver W/ Silver Rings & Tips
OC-0432BKA116	12'	1-1/8"	Black W/ Silver Rings & Tips
OC-0432VEL116	12'	1-1/8"	Silver W/ Silver Rings & Tips

OUTRIGGER LINE TENSIONER



If you rig your halyard lines to the gunnel of your boat, the Outrigger Line Tensioner is what you've been waiting for. Its sleek, stainless steel mushroom design allows halyard pulley blocks to be locked into place with zero effort. The Line Tensioner eliminates unattractive, and sometimes painful, "camel-back" cleats.

- Mushroom head-threaded bolt
- Designed for boats with 1" to 2-1/2" thick gunnels
- Easy Ronstan medium cam cleat for up to 1/4" thick rope
- Heavy-duty lock washer to prevent loosening
- Electro-polished bracket with countersunk mounting holes



PART NUMBER	DESCRIPTION
F16-0204-1	Outrigger Line Tensioner

OUTRIGGER LINE CADDY



Halyard lines, while critical for catching fish, can be frustrating to keep neat and organized. Our Outrigger Line Caddy provides a simple option to keep them tamed. It's easy-to-install design is a must to add to your outrigger system collection.

- Fits all TACO Marine Outrigger Poles
- For 1-1/2" poles, we recommend removing the rubber spacer
- Adjusts to desired distance, depending on your needs



PART NUMBER	DESCRIPTION	ID
F40-0030BKA-1	Outrigger Line Caddy	1-1/8" to 1-1/2"

GRAND SLAM BACKING PLATE



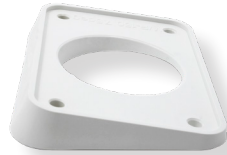
- ▶ Fits Grand Slam 200 and 300 series bases
- ▶ Matches existing base hole pattern
- ▶ No drilling
- ▶ Sold in pairs



WEDGE PLATE



- ▶ Corrects angle of bases to be perpendicular to the T-top
- ▶ Fits Grand Slam 200 and 300 series bases
- ▶ No drilling
- ▶ Sold in pairs



OUTRIGGER BASE REDUCER



- ▶ Reduces Grand Slam arm I.D. from 1-1/2" to 1-1/8"
- ▶ Nylon, easy-to-install sleeve design



PART NUMBER	DESCRIPTION	WIDTH	LENGTH
BP-150BSY-320-1	Grand Slam Backing Plate	5"	6.5"
WP-150WHA-1	Wedge Plate	4"	6"
GSC-0025	Outrigger Base Reducer	-	6"

PRE-DRILLED T-TOP EXTRUSION PLATES



- ▶ Fits Grand Slam 200, 300, 400 and 500 series bases
- ▶ Three different lengths available
- ▶ No drilling required
- ▶ Heavy-duty aluminum construction
- ▶ Channelled to allow rigging and wiring runs
- ▶ Sold in pairs

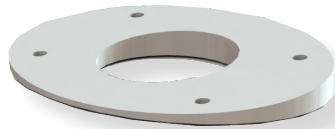


PART NUMBER	FINISH	LENGTH
GSE-1939BSA20	320 Grit Brite Anodized (BSA)	20"
GSE-1939BSA28-C	320 Grit Brite Anodized (BSA)	28"
GSE-1939BSA30-C	320 Grit Brite Anodized (BSA)	30"

GS-400 WEDGE PLATE



- ▶ Corrects angle of GS-400 bases to be perpendicular to the T-top
- ▶ Fits Pro Series GS-400
- ▶ No drilling
- ▶ Sold in pairs



PART NUMBER	DESCRIPTION	WIDTH	LENGTH
WP-500	GS-400 Wedge Plate	8"	6"

TACO[®]

HOW-TO & SPORT FISHING VIDEOS

PREMIUM TRIPLE MONO RIGGING KIT

- Ronstan triple roller pulley shock cord with stainless-steel snap hooks, 1/8" thick, 180' coil of Lindgren Pitman 400# Monofilament in Black, adjustable tension release clips, 1-3/4" outrigger line stops, stainless-steel eye strap and screws, double sleeve crimps, coastlock-style swivels and snap swivels and quick-dry mesh bag
- Rigs up to 24' carbon fiber outriggers



PREMIUM TRIPLE BRAID RIGGING KIT

- Ronstan triple roller pulley shock cord with stainless-steel snap hook, 1/8" thick 300' Dacron black rigging cord, adjustable tension release clips, 1-3/4" outrigger line stops, stainless-steel eye strap and screws, double sleeve crimps, coastlock-style swivels and snap swivels and quick-dry mesh bag
- Rigs up to 18' outriggers



PREMIUM DOUBLE MONO RIGGING KIT

- Double roller pulley shock cord with stainless-steel snap hooks, 1/8" thick 180' coil of Lindgren Pitman 400# Monofilament in Black, adjustable tension release clips, 1-3/4" outrigger line stops, stainless-steel eye strap and screws, double sleeve crimps, coastlock-style swivels and snap swivels and quick-dry mesh bag
- Rigs up to 20' carbon fiber outriggers



PREMIUM DOUBLE RIGGING KIT

- Single roller pulley shock cord with stainless-steel snap hook and eye insert, 1/8" thick 200' Dacron black rigging cord, adjustable tension release clips, 1-3/4" outrigger line stops, pad eye with screws, double sleeve crimp, snap swivel and quick-dry mesh bag
- Rigs up to 22' outriggers



PREMIUM RIGGING KIT

- ▶ Single roller pulley shock cord with stainless-steel snap hook and eye insert, 1/8" thick 100' Dacron black rigging cord, adjustable tension release clips, 1-1/4" outrigger line stops, pad eye with screws, double sleeve crimp, snap swivel and quick-dry mesh bag
- ▶ Rigs up to 22' outriggers



CENTER RIGGING KIT

- ▶ Single roller pulley shock cord with a stainless-steel snap hook and eye insert, 1/8" thick 50' Dacron black rigging cord, adjustable tension release clips, 1-1/4" outrigger line stops, pad eye with screws, double sleeve crimp, swivel, snap swivel and quick-dry mesh bag
- ▶ Rigs up to 22' center rigger



STANDARD RIGGING KIT

- ▶ Glass ring with brass strap clips, 1/8" thick 100' Dacron black rigging cord, adjustable tension release clips, 1-1/4" outrigger line stops, pad eye with screws, double sleeve crimp, swivel, snap swivel and quick-dry mesh bag
- ▶ Rigs up to 22' outriggers



PART NUMBER	DESCRIPTION	LENGTH
RK-0003MP	Premium Triple Mono Rigging Kit	180'
RK-0003PB	Premium Triple Braid Rigging Kit	300'
RK-0002MP	Premium Double Mono Rigging Kit	180'
RK-0002PB	Premium Double Rigging Kit	200'
RK-0001PB	Premium Rigging Kit	100'
RK-0001PCB	Center Rigging Kit	50'
RK-0001SB	Standard Rigging Kit	100'

RIGGING COMPONENTS



COK-0001B-2



COK-0001T-2



COK-0008B-2



F40-0030BKA-1



COK-0017-2 / COK-0018-2



COK-0004G-2



F16-1200-2



COK-0043-1



COK-0020-2



COK-0021-2



COK-0022-2

PART NUMBER

DESCRIPTION

COK-0001B-2	Standard Release Clip
COK-0001T-2	Premium Outrigger Release Clip
COK-0008B-2	1/8" Black Dacron Line 100'
F40-0030BKA-1	Outrigger Line Caddy
COK-0017-2	Outrigger Line Stop 1-1/4"
COK-0018-2	Outrigger Line Stop 1-3/4"
COK-0004G-2	Outrigger Glass Rings
F16-1200-2	Stainless-Steel Straps
COK-0020-2	Shock Cord with Pulley, 12"
COK-0021-2	Glass Eye with Shock Cord, 12"
COK-0022-2	Shock Cord with Double Pulley, 12"
COK-0043-1	Triple Roller with Sock Cord Pulley 16"

OLYMPIC ROD HOLDER CLUSTER



F31-0790BXY-1

The Rod Holder Cluster “Five-Banger” is the ultimate in on-boat and transportable rod storage. The ability to store, transport, clean and fish combos from this heavy-duty but lightweight polished aluminum unit is the perfect addition to your tackle arsenal.

- Flared 9-3/4” rod holders for big game tackle
- I-Beam construction ensures rods are locked and properly spread out
- Fits into standard rod holders 1-5/8” in diameter
- Accepts F31-2201WHA-C insert, sold separately
- Solid gimbal design for additional strength



ROD HOLDER LINER

- Anti-fungal, high-quality PVC liner for Olympic Rod Holder Cluster
- 1-year limited warranty



PART NUMBER	DESCRIPTION	COLOR
F31-2202WHA	Rod Holder Liner with Lip Protection for 2200 Series	White

KITE FISHING ROD CLUSTER

F31-0770BSA-1

Place your kite fishing outfits in the perfect boat location. This three-rod cluster keeps everything close, tidy and easy to handle when the bite turns on.

- 15° bent shaft for clearance
- Fits all standard gunnel mount rod holders
- Includes form-fitted, anti-fungal PVC white liner
- Gimbal design for secure locking placement
- Bag included



PART NUMBER	HEIGHT	WIDTH	ROD HOLDER HEIGHT	ROD HOLDER ID
F31-0790BXY-1	26"	13-1/2"	9-3/4"	1-3/4"
F31-0770BSA-1	24-1/2"	20"	9-3/4"	1-3/4"

DELUXE TRIDENT ROD HOLDER CLUSTER STRAIGHT & OFFSET

Be prepared to increase your catch, turn one rod holder into three and keep your kite lines close-at-hand. Our TACO Marine Deluxe Trident Rod Holders with Tool Caddy makes controlling your kite lines easy, compact and organized.



- ▶ Durable, welded, high-polished aluminum construction
- ▶ Three, 9-3/4" flared rod holders in a trident design
- ▶ 1-1/2" shaft fits into standard rod holders with a 1-5/8" diameter
- ▶ Detachable tool caddy equipped to hold rigging supplies and a cup
- ▶ Pre-drilled holes for knife, pliers, rigs, lures, spoons, etc.
- ▶ Eye strap attachment for safety lanyard and/or de-hooker placement
- ▶ Large 9-3/4" rod holders handle bigger and heavier rods and reels
- ▶ Stored in a mesh bag for easy drying if stored wet



F31-0780



F31-0781

PART NUMBER	DESCRIPTION	HEIGHT	WIDTH	R.H. HEIGHT	R.H. ID
F31-0780BXY-1	Rod Holder Cluster Straight w/ Tool Caddy	24-7/8"	22-3/8"	9-3/4"	1-3/4"
F31-0781BXY-1	Rod Holder Cluster Offset w/ Tool Caddy	25-1/2"	22-3/8"	9-3/4"	1-3/4"

ALUMINUM ROD RACKS



- ▶ 3- or 4-rod rack options
- ▶ Hidden fasteners
- ▶ Slotted to lock-in rods/reels
- ▶ Form-fitted PVC black liner
- ▶ Designed for light tackle spinning rod/reel combos



POLY ALUMINUM ROD RACKS



- ▶ 3- or 4-rod aluminum polyethylene rack options
- ▶ Recessed fasteners
- ▶ Slotted to lock-in rods/reels
- ▶ Form-fitted PVC white liner
- ▶ Designed for light- to medium-tackle spinning rod/reel combos
- ▶ Slots for knife and pliers



4-ROD TRANSOM MOUNT RACK



- ▶ Patent-pending spline adjustment technology
- ▶ Adjustable to fit any boat's transom
- ▶ Form-fitted PVC white liner



PART NUMBER	DESCRIPTION	HEIGHT	WIDTH	R.H. ID
F31-3003BSA-1	3-Rod Holder Rack, Aluminum	8-1/2"	11-1/4"	1-1/2"
F31-3004BSA-1	4-Rod Holder Rack, Aluminum	8-1/2"	16"	1-1/2"
F31-3103BXZ-1	3-Rod Holder Rack, Aluminum w/ Poly	8-1/2"	11-1/4"	1-1/2"
F31-3104BXZ-1	4-Rod Holder Rack, Aluminum w/ Poly	8-1/2"	16"	1-1/2"
F31-3504BSA-1	4-Rod Transom Mount Rack	10"	41"	1-7/8"

ROD HANGERS



Stationary Rod Hanger & Revolving Rod Tip Holder

- High-polished, marine-grade Type-316L stainless steel
- Spring locking rod tip holder
- Delrin inserts
- Concealed installation screws



Hanger Racks

- 2-, 3- and 4-Rod Hanger Racks available
- Pre-drilled mounting holes and beveled edges
- Mount vertically, horizontally or overhead



PART NUMBER	DESCRIPTION	LENGTH	WIDTH
F19-0006-1	Revolving Rod Tip Holder	2-1/4"	1"
F19-0006-2	Stationary Rod Hanger	2-3/4"	1"
F16-2700-1	Revolving Rod Tip Holder & Stationary Rod Hanger Kit	-	1"
F16-2751-1	2-Rod Hanger w/ Poly Rack	9-1/8"	1-1/2"
F16-2752-1	3-Rod Hanger w/ Poly Rack	18"	1-1/2"
F16-2753-1	4-Rod Hanger w/ Poly Rack	13-1/2"	1-1/2"

REEL HANGER WITH ROD TIP HOLDER KIT

- Corrosion-resistant stainless steel spring secures reel into position
- Adjustable to fit most popular trolling needs
- Patent number US7228655



PART NUMBER	DESCRIPTION	LENGTH	WIDTH
F16-2810-1	Reel Hanger w/ Rod Tip Holder Kit	4"	6"

CLAMP-ON ROD HOLDER



- Sizes available for 7/8", 1" and 1-1/4" O.D. tube and 1-1/16", 1-5/16", 1-11/16" and 1-15/16" schedule-40 pipe
- Manufactured from Type-316L stainless steel
- Rotates and lock every 18°
- Flared opening
- I-beam weld pin base
- Easy, clamp-on installation in just minutes
- Includes form-fitted PVC white liner
- Patent number US7309054



POLY CLAMP-ON ROD HOLDER



- UV-stabilized high-density polyethylene
- Includes form-fitted PVC white liner
- Adjustable clamp with black insert
- Clamp to fits 7/8" and 1" O.D.
- Rotate and lock every 18°



STAINLESS STEEL TYPE-316L

PART NUMBER	FITS	LOCATION	RH ID	FINISH/COLOR
F16-2600POL-1	7/8" & 1" OD Tube	Bow, Rail, Grail Rail	1-5/8"	Polished
F16-2623POL-1	1-1/16" & 1-5/16" schedule-40 Pipe, 1-1/4" OD Tube	T-Top, Leaning Post, Polling Platform	1-5/8"	Polished
F16-2630POL-1	1-11/16" & 1-15/16" schedule-40 Pipe	T-Top, Leaning Post, Polling Platform	1-5/8"	Polished

POLY

PART NUMBER	FITS	LOCATION	RH ID	FINISH/COLOR
F41-2700WHA-1	7/8" & 1" OD Tube	Bow Rail	1-3/4"	White

ROD & REEL TOTE'M RACK



Our Rod & Reel Tote'm Rack allows you to transport up to four rods and reels directly from storage at home to your boat.

- ▶ UV-stabilized, marine-grade 1/2" white polymer
- ▶ Bungee cords provided for added security
- ▶ Carries up to four conventional rods and reels
- ▶ Secure wall mounting bracket and locking pin included



BUNGEE ROD HOLDERS

Whether under the gunnel of your boat or on the wall in a garage, store your rods and reels safely and neatly with our Bungee Rod Holders.

- ▶ 2-, 3- and 4-Rod options available
- ▶ Made from UV-stabilized polyethylene
- ▶ Includes mounting brackets and hardware



4-ROD DELUXE PONTON BOAT ROD RACK

If having your rods and reels available for quick access on your pontoon boat is important, our 4-Rod Deluxe Poly Rod Rack provides the storage you've been looking for.

- ▶ Handles spinning and conventional tackle
- ▶ Stainless-steel fasteners resist rust and corrosion
- ▶ Easy assembly



DELUXE POLY ROD RACKS



Easily organize rods, pliers and knives in the precise location of your choosing with our Deluxe Poly Rod Racks.

- 2-, 3- and 4-Rod Racks available
- Made from UV-stabilized polyethylene



PART NUMBER	DESCRIPTION	COLOR	LENGTH	HEIGHT	WIDTH
P03-144W	Rod & Reel Tote'm Rack	White	21"	8"	2"
P03-132W	2-Rod Bungee Rod holder	White	13"	6"	1"
P03-133W	3-Rod Bungee Rod holder	White	16"	6"	1"
P03-134W	4-Rod Bungee Rod holder	White	20"	6"	2"
P03-074W	4-Rod Deluxe Pontoon Boat Rod Rack	White	16"	10"	6"
P03-062W	2-Rod Deluxe Poly Rod Rack	White	14"	10-1/2"	3"
P03-063W	3-Rod Deluxe Poly Rod Rack	White	14"	18"	3"
P03-064B	4-Rod Deluxe Poly Rod Rack	Black	14"	18"	3"
P03-064W	4-Rod Deluxe Poly Rod Rack	White	14"	18"	3"

COME ON BOARD HANDLES



Boarding your boat is easier than ever before with our Come On Board Handles. At nearly 5' in length, these handles features a large grabbing surface with a finger-molded design for comfortable, strong support for getting on and off your boat.

- Manufactured from stainless steel Type-304
- **Fixed Base Mount** - Stainless-steel receiver base is ideal for gunnel or transom platform mounting. Attaches permanently to gunnel
- **Rod Holder Mount** - 1-1/2" tube diameter fits into standard rod holders 1-5/8" in diameter. Solid gimbal mount design assures proper locking placement
- Multiple piece design for easy storage



PART NUMBER	DESCRIPTION	LENGTH	DIAMETER
F16-0800-1	Come On Board Handle w/ Rod Holder Mount	56-1/4"	1-1/2"
F16-0810-1	Come On Board Handle w/ Fixed Base Mount	57-1/2"	1-1/2"
F16-0800C-1	Come On Board Handle Receiver w/ Backing Plate	-	1-1/2"

QUICK RELEASE FENDER LOCK



For dockside safety and convenience, our Quick Release Fender Lock ensures secure, quickly stored fender lines, which are also maintained at the optimal length because of the attached mounting pin.

- ▶ Manufactured from stainless steel Type-316L
- ▶ Overall height above deck is 1-19/32"
- ▶ Includes a 1/4" drain plug
- ▶ Designed for easy, single-hand operation
- ▶ Allows simple installation and removal of float-style fenders



PORTABLE CLEATS

Securely tie off lines and set fenders all in one place. Because it fits standard rod holders, these cleats are movable, stowable and a practical step forward in your boating and docking experience.

- ▶ Large S-shape 9" cleat design
- ▶ Accommodates up to 3/4" dock line for larger boat applications
- ▶ Pipe diameter of 1-1/2" fits into standard rod holders 1-5/8" in diameter
- ▶ Loop hole design to hang fenders over the side
- ▶ Ideal for hanging hose while washing boat
- ▶ 40" Transom Cross Tie Cleat XL available and sold in pairs



PART NUMBER	DESCRIPTION
F16-0151-1	Quick Release Fender Lock
F30-0861BSA-1	Multi-Purpose 15° Portable Cleat
F30-0863BSA-1	Transom Cross Tie Cleat XL

ADJUSTABLE POLY FILE TABLES

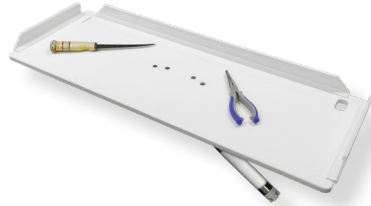


A great cutting surface is critical when fishing. Save your gunnels, cooler tops and live well lids with our 20" and 32" Adjustable Poly File Tables - the perfect addition to your boat when fileting and cutting bait.

- ▶ High-density, 1/2" thick Polyethylene
- ▶ Holds a knife and pliers
- ▶ Drainage openings for easy cleanup
- ▶ Anodized aluminum mount fits into any standard gunnel rod holder
- ▶ Rugged engineered nylon tilt mount locks at many angles
- ▶ Folds flat for storage under deck
- ▶ Stainless fasteners and easy-to-assemble mount



P01-2120



P01-2132

PART NUMBER	HEIGHT	WIDTH	DEPTH
P01-2120W	15"	20"	12"
P01-2132W	15"	32"	12"

KNIFE & PLIER HOLDER

- ▶ Holds a pair of pliers and two knives
- ▶ Includes stainless steel mounting screws



PART NUMBER	WIDTH	LENGTH	WEIGHT
P01-1000W	6-5/8"	7-1/2"	1-1/4 lbs.

POLY TUMBLER HOLDERS

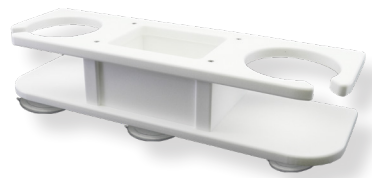


- UV-stabilized, high-density white polyethylene
- Patent-pending mobile phone holder design
- Double holder holds two 16- to 30-ounce tumblers
- Dual drain holes on recessed bottom
- Holds tumbler at proper height to prevent tipping
- Suction cups included



POLY DRINK HOLDERS

- UV-stabilized, high-density white polyethylene
- Holds full-size insulated drink and/or mug
- Hidden fasteners
- Suction cups included



PART NUMBER	DESCRIPTION	COLOR
P01-2020W	2-Tumbler Poly Holder	White
P01-2010W	1-Tumbler Poly Holder	White
P01-2001W	2-Drink Poly Holder w/ Suction Cup Mount	White
P01-2003W	1-Drink Poly Holder w/ Suction Cup Mount	White
P01-2000W	2-Drink Poly Holder w/ Catch All	White

GRAND SLAM 800 VHF ANTENNA MOUNT



The GS-800 VHF Antenna Mount was created specifically to prevent climbing on the boat gunnel to raise and lower a VHF antenna. Lift and descend the antenna from the safety of the deck from under the top. Its smooth operation, attractive machined aluminum frame and cast stainless-steel rotator make this item a must for any boater.

- ▶ Standard 1"-14 thread (male) shaft to accept standard VHF antennas
- ▶ Folding crank handle locks flush into base
- ▶ Machined / Anodized aluminum body with a light brushed finish



GRAND SLAM 850 ELECTRIC VHF ANTENNA MOUNT



The GS-850 Electric VHF Antenna Mount was designed with safety and innovation in mind. Boaters can adjust the position of their VHF antenna with the simple push of a button from the comfort of their helm. It is a fully electric unit with hidden wires inside the hardtop. This mount easily installs to the surface of the hardtop and fits all top thicknesses.

- ▶ Standard 1"-14 thread (male) shaft to accept standard VHF antennas
- ▶ Machined / Anodized aluminum body with a light brushed finish



PART NUMBER

DESCRIPTION

GS-800-1	Grand Slam 800 VHF Antenna Mount
GS-850	Grand Slam 850 Electric VHF Antenna Mount



GRAND SLAM 900 MASTHEAD ANCHOR LIGHT

Climbing on the boat gunnel to raise and lower the masthead anchor light is dangerous, time consuming and frustrating. The GS-900 allows boat operators to lift and descend this navigational requirement from the safety of the deck, right under the top and without ever having to climb on the gunnel again.

- Ideal for boats 39' in length or shorter
- Certified USCG-required for 3 NM
- LED light and shaft included
- Machined / Anodized aluminum body with a light brushed finish



GRAND SLAM 950 ELECTRIC MASTHEAD ANCHOR LIGHT



Complete your electric-mount arsenal with the new Grand Slam 950 Electric Masthead Anchor Light! With the simple push of a button, boaters can safely adjust the position of their Masthead Anchor Light from the comfort of the helm. The GS-950 is a fully electric unit with hidden wires inside the hardtop. This mount easily installs to the surface of the hardtop and fits all top thicknesses.

- Ideal for boats 39' in length or shorter
- Certified USCG-required for 3 NM
- Includes tube, light and 10" lead for 12-volt DC power supply for light function
- Machined / Anodized aluminum body with a light brushed finish



PART NUMBER

DESCRIPTION

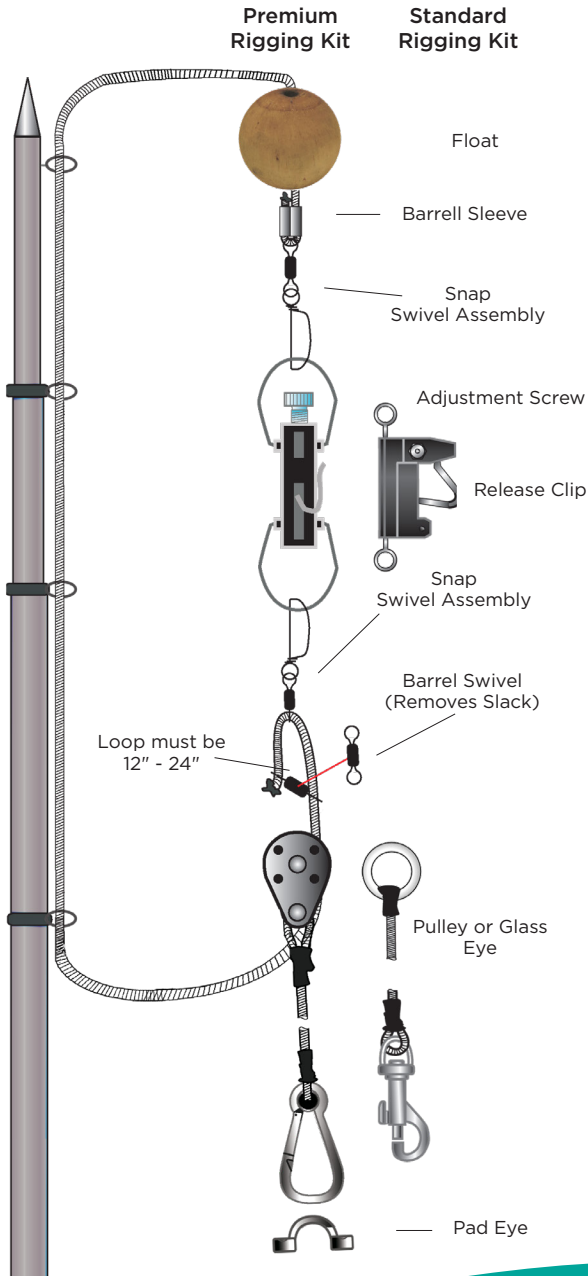
GS-900-1

Grand Slam 900 Masthead Anchor Light

GS-950

Grand Slam 950 Electric Masthead Anchor Light

RIGGING AN OUTRIGGER - SINGLE



RIGGING AN OUTRIGGER - DOUBLE

