

Tempress®



MASTER CATALOG

CONTENTS

MARINE SEATS

Navistyle™
5-6



Profile Guide
7-8



All-Weather™
9-10



FISHING GEAR

Rod Holders
19-20

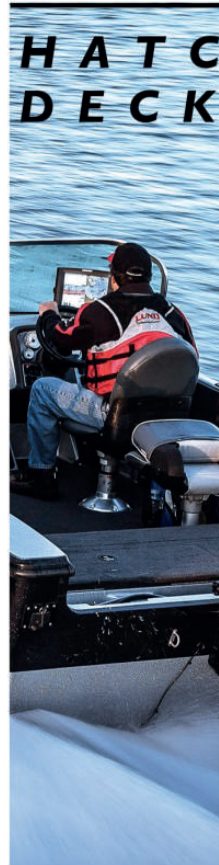
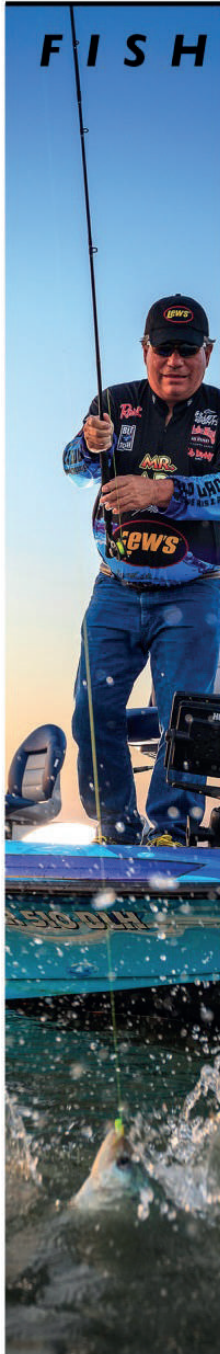


STORAGE

Boat Organizers
29-31



HATCHES & DECK PLATES



Quick Disconnect
10



Elite™ Series
11-12



Fisherman's
13



Casting
14



Bench
15-16



Mounts
20



Stainless Steel
21-23



Accessories
24



Mr. Crappie Series
25-26



Cord Organizers
32



Drink Holders
33-34



Gear Organizers
35-38



Bags & Totes
39-42



Access Cam/Slam
45-46



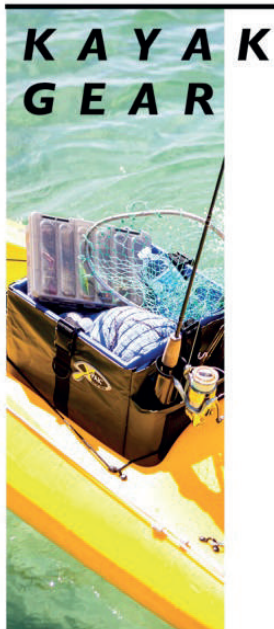
Tackle Hatches
45-46



Hatch Liners
47



Deck Plates
48



Crate Cover
49-50



Fish N' Tote
49-50



Cockpit Deck Caddy
49-50



Can Coolers
51



Custom YETI® Coolers & Accessories, 52



SEATING





Navistyle™ Seat

The perfect blend of ergonomic comfort, craftsmanship, and style. Subtle curves offer lumbar support while allowing for active lateral movement.



Profile Guide Seat

Durability and comfort in a folding seat with industry first two-tone welded seams over high density, UV stable marine grade vinyl.



All-Weather™ Seat

The standard in durability and comfort for more than 20 years. A double-contoured seat pan minimizes stress points with heavy-duty construction.



Quick Disconnect Swivel Mount Seat

Provides features and functionality, allowing you to easily swivel and remove your seat. Great for bench seats or engine boxes.



Elite™ Helm Seat & Ultimate Elite Seat

The Elite™ Helm is the Captain's choice, with unequaled quality, style, and comfort. Our roto-molded seat shell offers extreme durability that is ergonomically correct. The ultimate in helm seating, the Ultimate Elite™ features two-tone contrasting vinyl and trim in our durable roto-molded shell. The ultimate in ergonomic comfort and style.



Fisherman's Seat

The Fisherman's Helm Seat is constructed of materials designed to withstand the rigors of the marine environment. By utilizing Tempress® StylePanels®, the Fisherman's Helm Seat goes beyond the standard snap on upholstery common in the market place today.



Casting Seats

Generous sizing and quality construction for years of comfortable and worry-free use from this instant classic. Fits all mounts, swivels, and spiders.



Bench Seating

Spacious seating in a variety of colors and styles in a light-weight and easy to install seat.

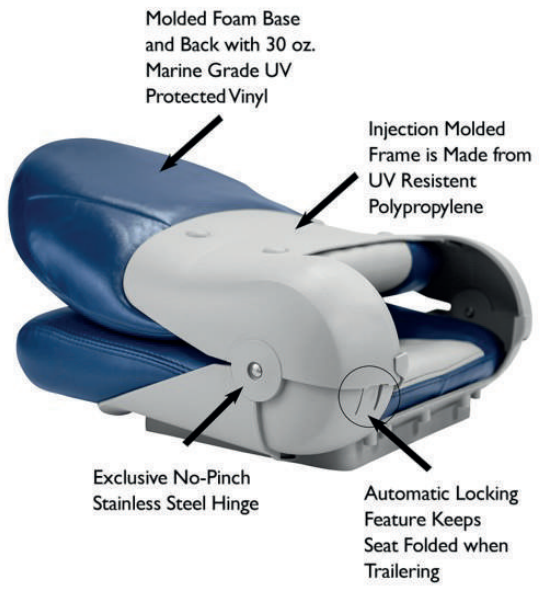
Navistyle™ Series Seating



The Navistyle™ Series seat is the perfect blend of ergonomic comfort, craftsmanship and styling. The thick, molded foam base and back is covered in 30 oz. marine grade vinyl, provides lumbar support and the tapered sides allow for lateral movement desired by active users. The Navistyle™ Series also features our patented “no-pinch” hinge with automatic locking adjustment to secure the seat in the folded position while running or trailering. The injection molded polypropylene seat shells provide added durability to ensure long lasting comfort. The Navistyle™ Series will fit most standard seat pedestals, swivels and slides and is available in both High-Back and Low-Back styles.



Tempress® standards for product innovation really show in the Navistyle™ Series. An injection molded, clamshell frame makes up the foundation of the seat, with our exclusive “no-pinch” hinge (right), and our unique StylePanels® (left). The Navistyle™ Series fits most standard pedestals, swivels, and slides. Made with corrosion proof materials and stainless steel hardware.



Navistyle™ High Back Colors & Part #s



Blue & Gray
54901



Gray & Charcoal
54907



Gray
54853



Red & Gray
54911



Tan & Sand
54919



White
54800



White & Blue
54913



Mossy Oak
Break Up™ Vinyl
54921



Mossy Oak
Shadowgrass™ Vinyl
54922

Navistyle™ Low Back Colors & Part #s



Blue & Gray
54672



Gray & Charcoal
54675



Gray
54670



Red & Gray
54683



Tan & Sand
54684



White
54681



White & Blue
54678



Mossy Oak
Break Up™ Vinyl
54755



Mossy Oak
Shadowgrass™ Vinyl
54756

Navistyle™ High Back

High Back style offers maximum comfort and support in a durable seat. StylePanels® design made from corrosion proof materials.

Product size:
23.5"H x 18.5"W x 19.5"D
Unit Weight: 14 lbs.



Navistyle™ Low Back

Low Back style offers more space for flexibility on smaller boats. StylePanels® offer ergonomic comfort.

Product size:
18.75"H x 18"W x 19.5"D
Unit Weight: 13 lbs.



Tempress®

Profile Guide

Series Seating



Introducing our toughest seat yet. The Profile Guide Series Seat has welded seams on our 30 oz. marine grade vinyl so it is impervious to water, an upgraded thicker high density foam insert and our no pinch hinge w/ lock. This seat is built to withstand harsh conditions, keeping you comfortable and on the water longer! Stainless steel hinge pins secure the fold down back and included 1/4" x 20 T-nuts allow mounting to most standard marine swivels, slides, or seat spiders. The Profile Seat Shell will also accept our proprietary Quick Disconnect Mounting Kit for even more functionality. Includes custom fitted cushion, (also available as a replacement item).



The Profile Guide Series features our industry first two-tone welded seam construction over molded foam seat and back panels. The profile Guide delivers maximum comfort and style with thick 30 oz. marine grade UV stable vinyl and injection molded polypropylene shell.

Additional features include our exclusive no-pinch hinge and built-in seat lock that automatically engages when seat is folded.



Mossy Oak
Shadowgrass™ Vinyl
45630



Profile Guide Series
Colors & Part #s

Mossy Oak
Break Up™ Vinyl
45629



The Profile Guide Series can be easily mounted to most standard marine seat swivel, slide or seat spider and will also accept our proprietary Quick Disconnect Mounting Kit for added functionality. See page 10 for more details on this versatile accessory.



Charcoal &
Gray
45625



Gray
45626



Blue & Gray
45624



Red & Gray
45627



White & Gray
45628

Profile Guide Series:
Product Size:
18"H x 19.5"W x 19"D
Unit Weight: 10.5 lbs.

Tempress®

All-Weather™ Series Seating

The All-Weather™ Series has been a durable standard for more than 20 years. With its ergonomic design and heavy-duty construction, these seats might even outlast your boat! Not just durable, but comfortable as well, the All-Weather™ Seat features a double contoured seat pan that minimizes pressure points. Stainless steel hinge pins secure the fold down back and the included 1/4" x 20 T-nuts allow mounting to any standard marine swivel, slide, or seat spider. The All-Weather™ shell will also accept our proprietary Quick Disconnect Mounting Kit for even more functionality.



All-Weather™ High Back

High Back style offers maximum comfort and support in a durable, folding seat.

Product size: 20"H x 18"W x 18"D
Unit Weight: 8 lbs.



All-Weather™ Low Back

Low Back style offers lasting durability in a premium folding seat.

Product size: 17.5"H x 18"W x 17"D
Unit Weight: 8 lbs.



All-Weather™ High Back: Colors & Part #s



Blue & Gray
45607



White
45616



Gray & Charcoal
45608



Mossy Oak
Break Up™ Vinyl
45622



Gray
45602



Mossy Oak
Shadowgrass™ Vinyl
45623



Red & Gray
45611

All-Weather™ Low Back: Colors & Part #s



White
45250



Gray
45253

The High and Low Back combos include a custom fitted cushion set (also available as a replacement item). These cushions feature a wrap around design, with 30 oz. marine grade UV stable vinyl, and high-density foam inserts.

Replacement cushions and seat shells available for most All-Weather™ Seat colors and combos.

Quick Disconnect



Quick Disconnect Kits work with the All-Weather™ Series and Profile Guide Series Seat Shells.



QD Mounting Kits

| COLORS: | PART #: |
|---------------------|---------|
| White QD Mount only | 45830 |
| Gray QD Mount only | 45833 |
| Black QD Mount only | 45835 |
| White QD Kit | 45930 |
| Gray QD Kit | 45933 |
| Black QD Kit | 45935 |

Also available in All-Weather™ Low Back Combo Kits. They feature double contoured seat pans that eliminate pressure points, stainless steel hinge pins, and the Quick Disconnect Mount that provides versatility.

Part #: 45150, 45153

Tempress®

Elite™ Series Helm Seating



Roto-molded seat shell offers extreme durability and comfort. The Elite™ Helm Seat features arm rests on both High- and Low-Back styles.



The Elite™ Helm Seat is a rotationally molded seat that incorporates the patented Navistyle™ StylePanels® system to ensure superior comfort, unequalled quality, and to offer a wide possibility of styles. Like all Tempres® products, the Elite™ Helm Seat is constructed of materials designed to withstand the rigors of the marine environment. By utilizing Tempres® StylePanels®, the Elite™ Helm Seat goes beyond standard snap-on upholstery common in the marketplace today.



Ultimate Elite™



Elite™ High-Back



Elite™ Low-Back

Product size:
27"H x 24"W x 27.5"D
Unit Weight: 22 lbs.



Product size:
26"H x 23.5"W x 27.5"D
Unit Weight: 22 lbs.



Product size:
22"H x 23.5"W x 27.5"D
Unit Weight: 21 lbs.



The Elite™ contoured StylePanels® create a comfortable seating surface that is ergonomically correct without the excessive use of foam. Built-in lumbar support and a rolled front edge make the Elite™ Helm Seat perfect for any application where comfort, durability, and superior style are desired.



Ultimate Elite™

| COLORS: | PART #: |
|-------------------|---------|
| White & Sand | 57238 |
| Charcoal & Silver | 57237 |
| White & Blue | 57231 |
| White & Black | 57232 |

Elite™ High-Back

| COLORS: | PART #: |
|-----------------|---------|
| Charcoal & Gray | 57017 |
| White | 57010 |
| Mossy Oak Break | 57018 |
| Up™ Vinyl | |

Elite™ Low-Back

| COLORS: | PART #: |
|-----------------|---------|
| Charcoal & Gray | 57027 |
| White | 57020 |
| Mossy Oak Break | 57028 |
| Up™ Vinyl | |

Tempress®

Fisherman's Seat



The latest installment in the Tempress® line of marine seating is a rotationally molded Fisherman's Helm Seat that incorporates the patented Navistyle™ StylePanels® system and ensures superior comfort, unequalled quality, and a wide possibility of styles. Like all Tempress® products the Fisherman's Helm Seat is constructed of materials designed to withstand the rigors of the marine environment. By utilizing Tempress® StylePanels®, the Fisherman's Helm Seat goes beyond the standard snap on upholstery common in the market place today.



Fisherman's Seat: Colors & Part #s



White
56101



Charcoal/Gray
56102



Mossy Oak Break-Up™ Vinyl
56110

The contoured StylePanels® create a comfortable seating surface that is ergonomically correct without the excessive use of foam. Built in lumbar support and a rolled front edge make the new Tempress® Fisherman's Helm Seat perfect for any application in which comfort, durability, and superior style are desired.

Fisherman's Seat

Product Size:
22"H x 19.5"W x 24"D
Unit Weight: 18 lbs.



Casting Seats



Deluxe Casting Seat

The Deluxe Casting Seat will provide years of comfort due to its generous size and quality construction. Made of high-density marine foam, UV stable marine grade vinyl and a corrosion proof thermo-plastic base. The Deluxe Casting Seat has built-in stainless steel T-nuts that will fit most seat mounts and swivels. Mounting hardware is included.

Product Size: 6"H x 18"W x 13"D

Unit Weight: 4 lbs.

Deluxe Casting Seat: Colors & Part #s



White - 55100



Gray - 55101



Blue - 55102



Red - 55103



Charcoal - 55108



Mossy Oak Break-Up™ Vinyl - 55115



Mossy Oak Shadowgrass™ Vinyl - 55116

Guide Series Casting Seat

The new Guide Series Casting Seat raises the bar for styling and comfort. This high quality seat features a thick, molded foam cushion covered in UV stable marine grade vinyl with a corrosion and mildew proof molded plastic base and built-in stainless steel T-nuts. The seat will fit most seat mounts and swivels. Stainless steel mounting hardware is included.

Product Size: 10"H x 18"W x 13"D

Unit Weight: 4 lbs.

Profile Guide Seat: Colors & Part #s



Gray - 55301



Charcoal/Gray - 55303



Blue/Gray - 55302

Tempress®

Bench Seating



48" Bench Seat

The 48" wide Bench Seat is constructed of a light-weight corrosion-proof aluminum frame back and a heavy-duty plastic base. It's an extremely durable, light-weight, and easy-to-install seat for a variety of configurations. The seat folds with black powder coated steel hinges. Hardware not included.

Part #: 54840 - 54847

Product size: 19"H x 48"W x 20"D

Unit Weight: 32 lbs.

48" Bench Seat

| COLORS: | PART #: |
|------------------------------|---------|
| Charcoal & Gray | 54845 |
| Blue & Gray | 54846 |
| Tan | 54842 |
| Red & Gray | 54847 |
| Gray | 54841 |
| Charcoal | 54840 |
| Mossy Oak Break Up™ Vinyl | 54848 |
| Mossy Oak Shadowgrass™ Vinyl | 54849 |



Bench Seating Colors & Part #s

Charcoal & Gray
54845



Blue & Gray
54846



Tan
54842



Red & Gray
54847



Gray
54841



Charcoal
54840



Mossy Oak
Break Up™ Vinyl
54848



Mossy Oak
Shadowgrass™ Vinyl
54849



Deluxe 5 Piece

Bench Seating



Deluxe 5 Piece Bench Seat

Constructed of tough, marine grade UV treated vinyl to mitigate the potential deterioration caused by prolonged exposure to the sun. Ultra-light aluminum frames provide support without adding weight. Compression-foam padding ensures comfort on the water. Two 21"H x 22.5"W chairs on either end with a flip-down, hinged, 18"H x 13"W middle seat portion make up the bench configuration. Hardware is included.

Part #: 54830 - 54837

Product size: 24"H x 60"W x 21"D

Unit Weight: 45 lbs.

5 Piece Bench Seats

| COLORS: | PART #: |
|-----------------|---------|
| Charcoal | 54830 |
| Gray | 54831 |
| Tan | 54832 |
| Charcoal & Gray | 54835 |
| Blue & Gray | 54836 |
| Red & Gray | 54837 |

5 Piece Bench Seat Colors & Part #s



Charcoal
54830



Gray
54831



Tan
54832



Charcoal & Gray
54835



Blue & Gray
54836



Red & Gray
54837

Tempress®

FISHING GEAR





The Original Rod Holder

The Original Rod Holder set the standard for adjustable rod holders, and continues to lead the pack. More than 35 years on the market.



New Rod Holder

The new Rod Holder is in a class by itself, featuring a sliding locking ring to secure your rod. The act of removing your rod creates a hook setting motion.



Light Tackle Rod Holder

The Light Tackle Rod Holder is perfect for use in smaller boats or for fishermen who target panfish.



Mr. Crappie® Pro-Series Rod Holder

The Pro-Series Rod Holder Kit, designed by Mr. Crappie® Wally Marshall, is the ultimate rig for crappie fishermen.



Stainless Steel Triple Rod Holder

A place for your favorite rods and much more! A high-styled organizer to store your tools and your rods in an upright position.



Stainless Steel Double Rod Holder

The Stainless Steel Double Rod Holder is an upscale alternative to teak or poly-board organizers. Protects valuable rods and tools.



Stainless Steel Cockpit Organizer

Keep all of those small personal items convenient and safe. Great for fishing gear, binoculars, and much more!



Fish On!® Rod Holder

A New Twist on an Old Favorite!

The Fish-On!® Rod Holder continues the tradition set by "The Original" rod holder with more than 35 years on the market and over one million units sold! More proof that Fish-On!® brand rod holders continue to set the standard for the industry and are truly in a class by themselves.

Sliding locking ring to secure your rod



Fish On!® Rod Holder

The Fish On!® Rod Holder features a sliding locking ring to secure your rod in place, and comes equipped with a side mount ready for installation and use. The Rod Holder is completely adjustable, with 360° of horizontal adjustment, and 110° of vertical adjustment. Designed with an enlarged opening, just the act of removing your rod creates a hook setting motion.

Also Available:

2-Pack New Rod Holder with Side Mounts!

2-Pack New Rod Holder with Surface Mounts!

With Side Mount: #72026

Size: 3.75"H x 9.5"W x 3.5"D

Color: Black, Unit Weight: 1.1 lbs.

2-Pack with Side Mount: #72027

Size: 3.75"H x 9.5"W x 3.5"D

Color: Black, Unit Weight: 1.1 lbs.

2-Pack with Flush Mount: #72028

Size: 3.75"H x 9.5"W x 3.5"D

Color: Black, Unit Weight: 1.1 lbs.

Rod Holder

The Original...Long Live the King!



with Side Mount: #72012
Size: 3.75"H x 9.75"W x 6.5"D
Color: Black, Unit Weight: 1.1 lbs.



Original Rod Holder

The Original Rod Holder still leads the pack! The Rod Holder is completely adjustable, with 360° of horizontal adjustment, and 110° of vertical adjustment. Designed with an enlarged opening, just the act of removing your rod creates a hook setting motion.



#73002
Size: 7.25"H x 8"W x 2.5"D
Color: Black, Unit Weight: .4 lbs.



Light Tackle Rod Holder

The Fish-On!® Light Tackle Rod Holder is perfect for use in smaller boats or for fishermen who target panfish. Fits all Fish-On!® Mounting systems, and features a full range of adjustability both horizontally and vertically. Includes Side Mount.



Size: 5"H x 7.5"W x 2"D
Unit Weight: .3 lbs.

Flush Mount - #71455

The Fish-On!® Flush Mount allows you to add extra mountings. It mounts to flat horizontal surfaces and requires a 1.25" hole and (4) #10 self-tapping screws. Use with Fish-On!® Rod Holder Extension to provide increased range.



Size: 2"H x 4"W x 2"D
Unit Weight: .35 lbs.

Surface Mount - #71450

The Fish-On!® Locking Surface Mount installs on horizontal surfaces without drilling any large holes in your boat. It also raises the Rod Holder 2" above the gunnels for extra clearance.



Size: 2"H x 4.5"W x 1.6"D
Unit Weight: .3 lbs.

Side Mount - #71460

The Fish-On!® Side Mount allows you to add extra mountings. The 12 position mount installs with (4) self tapping screws to flat vertical surfaces. It can also be installed to a .875" or 1" rail with the optional Rail Mount Adapter.



Size: 2"H x 3.75"W x 1"D
Unit Weight: .3 lbs.

Rail Adapter Kit - #71465

The Fish-On!® Rail Mount works with the Side Mount to allow you to mount on any .875" or 1" rail. Includes all the hardware you need. Side Mount sold separately.

Stainless Steel Series

Triple Rod Holder

A place for your favorite rods and much more! This high-styled organizer has a place for your fillet knife, pliers, baits, and a convenient shelf for extra lines or scents. Stores three rods upright. The Triple Rod Holder is an alternative to teak or poly-board organizers. Features injection molded ABS inserts to protect valuable rods and tools. Hardware included.

PART #: 2221-0

Size: 14"H x 15.5"W x 3.5"D

Color: Stainless Steel, Unit Weight: 3.9 lbs.



Double Rod Holder

A more compact version of our Triple Rod Holder for tighter space constraints. The Double Rod Holder has the same features, including injection molded ABS inserts to protect rods and tools. Stainless steel mounting hardware included.

PART #: 2220-0

Size: 12.5"H x 12.5"W x 3.5"D

Color: Stainless Steel, Unit Weight: 3.6 lbs.



The Stainless Steel Series combines the timeless good looks and durability of stainless steel with the functionality of our proven line of fishing and storage products.



Knife and Plier Caddy

A stylish new solution to a functional organizer. The Knife and Plier Caddy keeps these essential tools safe and convenient in the cockpit or cabin. Fabricated from 304 polished stainless steel with injection molded ABS inserts to keep tools protected. Stainless steel hardware included.

PART #: 2212-0
 Size: 13"H x 6"W x 3"D
 Color: Stainless Steel
 Unit Weight: 1.4 lbs.



Cockpit Organizer

Keep all of those small personal items convenient and safe with the Stainless Steel Cockpit Organizer. This dynamic organizer is great for fishing gear, binoculars, and other personal items. The upscale alternative to teak or poly-board organizers. Stainless steel mounting hardware included.

PART #: 2213-0
 Size: 4.75"H x 14"W x 4"D
 Color: Stainless Steel
 Unit Weight: 3.9 lbs.



16" Folding Hook Rack

Large, 16" wide rack is made from 304 polished stainless steel with protective silicone inserts around each hook opening. Spring-loaded hinge allows unit to fold flat when not in use. Holds up to 17 large baits.



PART #: 2215-0
 Size: 4"H x 16"W x 1.25"D
 Color: Stainless Steel
 Unit Weight: 1.5 lbs.



Stainless Steel Series



Can cooler not included

Special grip fingers and rubber bottom hold your beverage in place.



Folding Drink Holder

The ultimate in function, style and space efficiency. The folding design is equipped with molded silicone fingers to adjust to the varying diameters of cans, cups, can coolers, and mugs. A molded silicone coaster inside the cover reduces noise and keeps containers from sliding.



Stainless steel mounting hardware included, along with nylon sound dampening washers for positioning between the unit and the hull.

PART #: 2211-0
Size: 4.5"H x 5"W x 4.75"D
Color: Stainless Steel
Unit Weight: 1.3 lbs.

The Stainless Steel Series combines the timeless good looks and durability of stainless steel with the functionality of our proven line of fishing and storage products.



Fender Cleat 2-Pack

Stylish spring loaded cleats provide a quick solution for positioning fenders. An upscale alternative to polyethylene cleats or over-the-rail designs. Packed two cleats per clamshell.

PART #: 2201-2
Size: 1"H x 3.75"W x 1"D
Color: Stainless Steel
Unit Weight: .67 lbs.



Fish-On![®]

Accessories



Cup Holder with Rod Mount

The Fish-On![®] Cup Holder is the perfect accessory. Its unique design features a gyroscope motion that will keep your drink contained no matter what weather you find yourself in. The Cup Holder with Rod Mount will fit into any Fish-On![®] Side Mount (not included), and can be mounted to any flat vertical surface or to a $\frac{7}{8}$ " or 1" rail with the optional Rail Mount Adapter.

PART #: 72030

Size: 8"H x 3.75"W x 3.75"D

Color: Black

Unit Weight: .5 lbs.



6" Rod Holder Extension 2-Pack

The Fish-On![®] 6" Extension will fit any of the Fish-On![®] mounts. Perfect for use with the Flush Mount on wide gunnelled boats, where additional freedom of rod movement is needed. Packed two per clamshell.

PART #: 71350

Size: 6.75"H x 5.5"W x 1"D

Color: Black

Unit Weight: .35 lbs.



12" Hook Rack

Three large Super Suction[™] cups keep this handy Hook Rack in place, even in the roughest of conditions. Each rack holds up to 25 baits, plus a place for your fillet knife. Easily stows away when not in use.

PART #: 2110-1

Size: 1.75"H x 12"W x 2"D

Color: White

Unit Weight: .25 lbs.



Mr. Crappie®

Designed by Wally Marshall

MR. CRAPPIE®
Wally Marshall



Mr. Crappie® Pro Series

The Mr. Crappie® Pro Series Rod Holder Kit is the ultimate rig for crappie fishermen. It allows the simultaneous use of up to 4 rods while slow trolling for crappie. The Kit allows full adjustability for rod angle, both horizontally and vertically, and quick set-up and breakdown with NO TOOLS REQUIRED TO MAKE ADJUSTMENTS.



“I designed these rod holders to make it very easy to adjust your rod tips to the perfect position for all types of trolling.”

— Wally Marshall

The Kit includes (4) Fish-On!® Light Tackle Rod Holders, (1) 4-position gang mount, and (1) Locking Surface Mount.

Additional features include:

- 22 lure holder holes for crappie jigs and crank baits
- A storage tray for terminal tackle, weights, hooks, and swivels

Mr. Crappie® Pro Series Rod Holder Kit:
#73000

Color: Black

Size: 12"H x 30"W x 3.58"D

Unit Weight: 4.75 lbs.



Light Tackle Rod Holder

The Fish-On!® Light Tackle Rod Holder is perfect for use in smaller boats or for fishermen who target panfish. Fits all Fish-On!® Mounting systems, and features a full range of adjustability both horizontally and vertically. Includes Side Mount.

#73002

Size: 7.25"H x 8"W x 2.5"D

Color: Black

Unit Weight: .4 lbs.

Double Down

The Mr. Crappie® Double Down is the answer to your additional seating needs. Originally designed for competitive crappie fishing, this unique seat mount puts two anglers where the action is! Sized to fit on the bow or stern casting platforms of any bass boat. Made of heavy-duty thick wall stainless steel tubing this seat mount is built to last. It has 3 sets of pre-drilled holes, one in the center, to work with an 11" pedestal and two for additional seating.



Double Down

#90100

Color: Stainless Steel

Size: 13"H x 46"W x 18"D

Unit Weight: 8.75 lbs.



Swingin' Single

The Mr. Crappie® Swingin' Single is easily portable for adding extra seats to your boat for guests or fishermen. Made of heavy-duty thick wall stainless steel tubing, this seat mount is built to last. It has pre-drilled holes to work with any standard marine swivel or seat.



Swingin' Single

#90000

Color: Stainless Steel

Size: 13"H x 19.5"W x 18"D

Unit Weight: 4.33 lbs.



STORAGE





Cruisin' Caddy

This easy to mount organizer holds your beverage, personal items, and even a couple of your favorite lures.



Cockpit Organizer

The original instant organizer! Suction mounts on any smooth surface in cockpit or in your cabin.



GPS/Cell Phone Caddy

This compact organizer holds most hand-held GPS units and cell phones. The GPS/ Cell Phone Caddy can be mounted on flat smooth surfaces.



Communications Caddy

This compact, easy to mount organizer is ideal for holding SmartPhones, hand held VHF or GPS units, or small personal items like sunblock, sunglasses or ski boot lube. Can be mounted on the back or bottom using the Super Suction™ cups included, or permanently mounted with screws.



Swivel Drink Holder

The Swivel Drink Holder keeps your drink on an even keel! Its unique design features a gyroscope motion that keeps your drink contained.



Seat Pack

This commercial grade organizer has a variety of places to store your gear. Easily mounts over the top of most pedestal seats.



Safety Gear Bag

Keep all mandatory safety and emergency gear organized. Separate storage areas in lid and outside mesh pocket.



Ultimate Gear Bag

This practical square design is ideal for all of your gear for a day on the water. Detachable shoulder straps with large padded handles for carrying.



Boat Organizers



Cockpit Organizer

The original instant organizer!
Suction mounts on any smooth surface in cockpit or cabin, and holds fishing gear, binoculars, or personal items.
Keeps bait, pliers, and filet knife safe.
Mounts also with screws.

#2133-1 White
#2133-8 Graphite
Size: 6"H x 12"W x 4"D
Unit Weight: .56 lbs.



Cruisin' Caddy

No place to stash stuff on your boat?
No problem! This easy-to-mount organizer holds your favorite beverage, personal items, and even a couple of your favorite lures! Mounts vertically or on a flat surface.

#2131-1 White
#2131-8 Graphite
Size: 4.5"H x 12"W x 4"D
Unit Weight: .94 lb





GPS/Cell Phone Caddy

A double compartment organizer that can hold both your small hand-held VHF radio and most SmartPhones. This compact organizer is also great for personal items such as sunglasses, sun-block or portable GPS units. Mounts on the back or on the bottom with Super Suction™ cups (included) or can be permanently mounted with screws.

#2134-1 White
 #2134-8 Graphite
 Size: 4.5"H x 6.0"W x 3.5"D
 Unit Weight: .38 lbs.



Stor-Aweigh™ Electronic Caddy

This folding Stor-Aweigh™ holds most hand-held electronic devices used on boats or ATVs. Holds GPS, VHF radios, most cell phones, and FRS communicators. The large Super Suction™ cups stay securely fastened, even in rough conditions.

#2162-1 White
 #2162-8 Graphite
 Size: 4"H x 4"W x 3"D
 Unit Weight: .3 lbs.



Communications Caddy

This compact, easy to mount organizer has a variety of uses on any size boat. It can hold most hand-held VHF radios, SmartPhones or small personal items. It has a convenient slot to hang your sunglasses or your favorite lure. Mounts on the back or on the bottom with Super Suction™ cups (included) or can be permanently mounted with screws.

#2135-1 White
 #2135-8 Graphite
 Size: 4.5"H x 3.5"W x 3.5"D
 Unit Weight: .31 lbs.



Boat Organizers



Boot Saver

The BoatMates® Boot Saver is designed for easy storage of all types of boots, waders, hiking, foul weather, etc. The Boot Saver protects any boot from damage from improper storage. By hanging upside-down, the Boot Saver promotes drainage and proper drying. (BOOTS NOT INCLUDED)

#41203

Color: Black

Size: 3.5"H x 12"W x 6"D

Unit Weight: .4 lbs.



Trash Bagger

The perfect solution for keeping trash out of the water. Easy to mount resin frame has a hinged cover to keep the contents from spilling out. Quickly mounts on any smooth surface with three Super Suction™ cups, or screws. Uses the typical supermarket bags, or kitchen trash bags. Bags included.

#2132-1 White

#2132-8 Graphite

Size: 2.5"H x 13.5"W x 6"D

Unit Weight: .75 lbs.



Super Suction™ Cups

The 3 1/8" diameter Super Suction™ cups available in a convenient four-pack. Fits all BoatMates® Products.

#2200-0

Color: Clear

Size: 3"D

Unit Weight: .75 lbs.



2-Pack Utility Hook

Instant organization! Suction mounts in cockpit, cabin, or fly bridge. Super Suction™ hook holds lines, leaders, clothing, towels, or a wet bathing suite. Stick it up when you need it, stow it away when you don't.

#2100-2

Color: White

Size: 3"H x 1"W x 1.5"D

Unit Weight: .12 lbs.

Line & Cord organizers



Large Utility Hook

Use on dock posts, in dock boxes, or mount on the cockpit to hold dock lines, life rings, or MOB line. Great for drying wet gear/towels. Mount with stainless steel screws, or with marine-grade adhesive.

#2101-1

Color: White

Size: 6"H x 2"W x 1"D

Unit Weight: .1 lbs.



Fender Hanger

A quick and easy way to hang and adjust fenders to the proper height for docking or rafting. Quick release cleat design makes knot tying obsolete! Holds up to 3/8" dia line, and fits 7/8" and 1" rail. Marine-grade resin construction.

#2102-1

Color: White

Size: 6"H x 2.5"W x 1"D

Unit Weight: .1 lbs.



Rail Line Organizer

Keep shore power cords, water hoses, and cables off the deck and organized while in port. Holds two power cords, two hoses, plus communications cable. Keep decks free of clutter! Fits 7/8" and 1" rail.

#2104-1

Color: White

Size: 7"H x 2"W x 1"D

Unit Weight: .1 lbs.



Double Rail Hook

Here's a quick, portable solution for hanging a couple of extra dock lines, wet bathing suits, towels, etc. Fits 7/8" and 1" rails. Great for hanging shore power cords or water hoses.

#2108-1

Color: White

Size: 5"H x 2.25"W x 1"D

Unit Weight: .1 lbs.



Large Rail Hook

This large, easy-to-install hook is ideal for holding large dock lines, life rings, and MOB lines. Fits over 7/8" and 1" diameter rails. Use in a hanging locker for additional storage space.

#2111-1

Color: White

Size: 8.5"H x 2"W x 1"D

Unit Weight: .25 lbs.



Drink Holders

for every boat and every budget!

Swivel Drink Holder

The BoatMates® Swivel Drink Holder holds your favorite beverage on an even keel! Its unique design features a gyroscope motion that will keep your drink contained no matter what weather you encounter. Molded from rugged commercial weight resin for years of use. Foam can cooler included.



#2154-1 White with Blue Can Cooler

#2154-9 Black with Red Can Cooler

Size: 8"H x 4" dia.

Unit Weight: .46 lbs.



First-Mate

The First-Mate is designed to keep your beverage on an even keel, even in the roughest conditions. The molded Gimbal mount is attached to the stainless steel "cage" that can hold cups with handles, cans, cans with can coolers or up to quart size water bottles. Blue can cooler included.

#22500

Color: Stainless Steel with Blue

Can Cooler

Size: 8"H x 4" dia.

Unit Weight: .46 lbs



Sail-Mate

The Sail-Mate is designed to hang from life-lines of sail or larger power boats. Stainless steel design can hold cups with handles, cans, cans with can coolers or up to quart size water bottles. Red can cooler included.

#22501

Color: Stainless Steel with Red

Can Cooler

Size: 9"H x 4" dia.

Unit Weight: .41 lbs.



Stainless Folding Drink Holder

Stainless steel folding design is equipped with molded silicone fingers to adjust to the varying diameters or cans, cups, can coolers and mugs. Molded silicone coaster inside the cover reduces noise and prevents containers from sliding.

#2211-0

Color: Stainless Steel

Size: 4.5"H x 5"W x 4.70"D

Unit Weight: 1.3 lbs



Folding Drink Holder 2-Pack

All-resin Folding Drink Holder has no moving parts to rust or corrode. Unique double-ring collar holds both standard beverages or can coolers.

#2170-1 White
#2170-8 Graphite
Size: 6"H x 4"W x 4"D
Unit Weight: .29 lbs./ea.



Drink Holder with Can Cooler

Handy, compact Drink Holder has a suction cup that can be placed on the back, or the bottom, and a can cooler to keep your favorite beverage cool!

Also available as a 2-Pack.

#2150-1 White with Blue Can Cooler
#2150-8 Graphite with Red Can Cooler
Size: 4.5"H x 4" dia.
Unit Weight: .31 lbs.
Also available as a two-pack.



Drink Holder Plus

Here's a super compact organizer that can fit almost anywhere. Holds your favorite beverage and a couple of lures. Mounts vertically or on a flat surface.

#2136-1 White
#2136-8 Graphite
Size: 4.5"H x 6" dia.
Unit Weight: .38 lbs.

Plan-o-grams

All BoatMates® organizers are packed in four-color, peg-able retail packaging featuring in-use photos. These easy to buy, easy to handle and easy to sell storage and organization items are great impulse and promotional items. We offer several plan-o-gram layouts from 18"W x 30"H to 48"W x 72"H. We can also develop a custom plan-o-gram for your specific needs. Contact us for more details regarding this service.



Gear Organizers



Large padded shoulder strap makes carrying to and from the boat effortless.

Stow and Go Seat Pack
#3135-4
Color: Blue/Gray
Unit Weight: 4 lbs.
Size: 16"H x 11"W x 8"D



Stow and Go Seat Pack

Take your gear from your vehicle to the boat-in one convenient organizer! Great for small boats with limited storage space. Easily mounts over seat back with quick-attach nylon hardware. The seat pack will fit most pedestal and back-to-back seats. Features include a large rear pocket for larger tackle tray, clothing or other essential gear, such as safety equipment.

The large front opening has a removable document pouch for licenses and registrations and a convenient key clip.

The large front pocket also has an expandable organizer pocket, plus smaller pockets with zippers.





Pedestal Gear Bag:

#3140-4

Color: Blue

Size: 16"H x 8"W x 14"D

Unit Weight: 2.4 lbs.



Pedestal Gear Bag

Unique half-round design fits under and around most pedestal style seats in cruisers, fishing boats, and pontoons. Gear Bag has plenty of interior space for tools, personal gear, fishing tackle, etc. Large removable interior divider with additional pockets provide lots of organization possibilities. Features clear, zippered pocket, ideal for boat registration or other documentation. Self-repairing zippers and heavy coated

mesh pockets. Quick release snaps on each side allow two bags to be fastened

back-to-back, or can be attached to



Pedestal Cooler

#3208-4

Color: Blue

Size: 16"H x 8"W x 13"D

Unit Weight: 1.9 lbs.



Hook and loop straps keep cooler secure to seat pedestal, while non-skid feet prevent sliding across deck.

Pedestal Cooler

Unique half-round design. Large capacity cooler holds 24 cans of your favorite beverage plus ice. Heat sealed thermal liner keeps beverages cold for up to 8 hours. Large mesh exterior pocket holds miscellaneous gear or personal items. Quick release snaps on each side allows two coolers to be fastened back-to-back. Also features cushioned carry strap and self-repairing zippers.



Gear Organizers



Safety Gear Bag

Keep all your mandatory safety and emergency gear organized and in one convenient location. This commercial quality ventilated bag is large enough to hold up to four extra-large adult PFDs. The separate top compartment can hold safety flares, first-aid supplies, distress flag, air horn, etc. There is a large mesh pocket in the front for additional storage. The top of the bag has a clear, zipper opening pocket for registration papers, licenses and other documents required to be on-board. The bag has heavy web carry handles on each end, plus a removable shoulder strap for easy carrying to and from the boat. There are also large, molded rubber zipper pulls for quick access to contents and nonskid feet on the bottom and brass ventilation grommets.

#3118-6

Color: Yellow/Black

Size: 14"H x 24.5"W x 13"D

Unit Weight: 2.25 lbs



T-Top & Bimini Bag

This compact storage bag fits the underside of most T-Tops and Bimini tops. Ideal for small boats up to 22 ft. Makes use of space that is normally underutilized. Ideal for PFDs, safety gear of foul-weather gear. Ventilates sides allow contents to dry, and additional zippered pockets for small item storage.

#3112-9

Color: Black

Size: 6"H x 26"W x 22"D

Unit Weight: 2.1 lbs.

Large main storage area
measures 10"H x 28"W x 7.5"D



Underseat Bag

#3128-8

Color: Gray

Size: 10"H x 25"W x 9"D

Unit Weight: 3 lbs.



Underseat Bag: Inflatable Boats

Secures over the bench seat by a hook and loop fastener strip. Easily removable. Two zippered mesh storage pockets on the front, plus one covered pocket in the center. 600 Denier polyester with UV resistant PVC lining. Thick and cushioned seat for comfort, with stainless steel drain grommets.



Widemouth Tool Tote

#3143-4

Color: Blue

Size: 11"H x 18"W x 11"D

Unit Weight: 3.1 lbs.



Widemouth Tool Tote

Twenty outside pockets and eleven interior pockets provide plenty of room to organize tools and hardware. Wide mouth zippered opening allows plenty of room to access power tools. Non-slip feet on bottom protect deck and keep bag from sliding. Reinforced seams and rigid bottom panel for years of use. Features padded handles, nylon hardware and self-repairing zipper with molded rubber pull.



Seat Organizer

#3129-4

Color: Black

Size: 9.5"H x 29"W x 3"D

Unit Weight: 1.1 lbs.



Seat Organizer

Heavy mesh pocket organizer can be mounted on back-to-back seat base or on rear of flip-flop style seats. Holds all those small items that clutter the deck during a day on the water. Use it to stow sun screen, tow lines, hand-held radios, etc. Self-repairing zippers with molded pulls make opening and closing quick and easy. Easy to mount with male-female snap fasteners or quick release straps.



Bags & Totes



Tool N' Gear Caddy

Portable organizer that can fit over a railing or a T-Top frame. Holds small electronics, tools, fishing gear, or personal items. Can be quickly removed and carried to shore using the large carrying handle. Interior loops hold tools, tackle, etc. Side pockets for filet knife or fishing pliers. Large, heavyweight mesh front pocket holds small items and has a self-repairing zipper with rubber pull.

#3141-9

Color: Black

Size: 17"H x 9.5"W x 4"D

Unit Weight: 2 lbs.



Utility Pouch

Handy, instant organizer holds hand-held radio, GPS, cell phone, winch handles, or personal items. Use in the boat, inflatable, R/V, or auto. Its small size can fit anywhere you have a smooth surface for mounting.

Pocket Organizer

Our large Pocket Organizer is great for stowing radios, GPS, personal items, first aid supplies, sunglasses, or safety gear. Keeps things handy when you need them, and stows away when you don't. Use on boat, inflatable, or PWC.



Utility Pouch

#3100-4

Color: Blue

Size: 11"H x 7"W x 1.5"D

Unit Weight: .3 lbs.

Pocket Organizer

#3105-4

Color: Blue

Size: 9"H x 9"W x 3"D

Unit Weight: .3 lbs.



Document Pouch

Keep your licenses, registration, and other mandatory documents in this water resistant, clear pouch. Documents stay organized. Large nylon self-repairing zipper with clear front panel. Mounts over the rail, in the cabin, in cockpit with large Super Suction™ cups.

#3103-9

Color: Black

Size: 14"H x 5"W x 5"D

Unit Weight: .25 lbs.



Shower Tote

Here's a great way to organize your shower essentials when needed. Mesh bag lets you see the contents, drains water and dries out in minutes. Large carry handle makes transporting easy, and Super Suction™ cups mount almost anywhere. Zipper top keeps contents from spilling out.

#3107-4

Color: Blue & Black

Size: 12"H x 11"W x 2"D

Unit Weight: .39 lbs.



Mesh Utility Bag

Large 14" x 20" mesh bag can be used as a laundry bag, line organizer, or for clothing storage. Super Suction™ cups mount on any smooth surface or mount with screws. Top flap with hook and loop closure keeps contents in place.

#3108-4

Color: Blue & Black

Size: 20"H x 14"W x 5"D

Unit Weight: .44 lbs.



The BoatMate Pouch

Store your personal items in this convenient, multi-purpose storage pouch. Compact size fits on the smallest boat, PWC, or dinghy. Holds keys, wallet, sunglasses, sunscreen, VHF radios, or cell phones. Mounts over the rail, or with Super Suction™ cups. Water resistant marine-grade fabric, with nylon self-repairing zipper.

#3104-4

Color: Blue & Black

Size: 15"H x 5"W x 5"D

Unit Weight: .4 lbs.



Bags & Totes



Folding Storage Tote

Folding, compact storage tote fits into lockers, lazarette or under seats, to organize those hard to reach spaces. Divided tote keeps clothing, provisions, tools, safety gear, and more from shifting while underway. Tote has strap handles for moving and carrying, as well as mesh pockets on each end for additional storage.



Folding Storage Tote

#3120-9
Color: Black
Size: 12"H x 16"W x 12"D
Unit Weight: 3 lbs.



Ultimate Gear Bag

This practical square design is ideal for your gear for a day on the water. Huge 20"H x 20"W x 10"D bag is constructed of 600 Denier polyester marine grade fabric with water repellant PVC lining. Has detachable shoulder strap plus large padded handles for carrying. Holds shoes, clothing, towels, life jackets and everything else you want to take aboard. Great for car, camper, or SUV, too!

Ultimate Gear Bag

#3122-4
Color: Blue
Size: 20"H x 20"W x 10"D
Unit Weight: 2 lbs.





Hanging Locker Bag: 3 Compartment

Compact, hanging locker bag organizes those tight storage spaces. Three compartments hold clothing, safety gear, etc. Ventilated sides and back help to control mildew.

#3130-9
Color: Black
Size: 18"H x 11"W x 10"D
Unit Weight: 3 lbs.



Hanging Locker Bag: 6 Compartment

Compact, six compartment organizer is ideal for small items, shoes, tools, safety gear, etc. Ventilated sides and back help control mildew.

#3131-9
Color: Black
Size: 18"H x 11"W x 10"D
Unit Weight: 3 lbs.



Cabin Door Organizer

Ideal organizer for miscellaneous items that clutter the cabin. This 14" x 24" organizer can mount on a door, bulkhead, or in the vee-berth. Holds full size chart books, personal items, documents, CDs, etc. Mount with Super Suction™ cups provided, or with screws.

#3110-9
Color: Black
Size: 24"H x 14"W x 2.5"D
Unit Weight: .7 lbs.



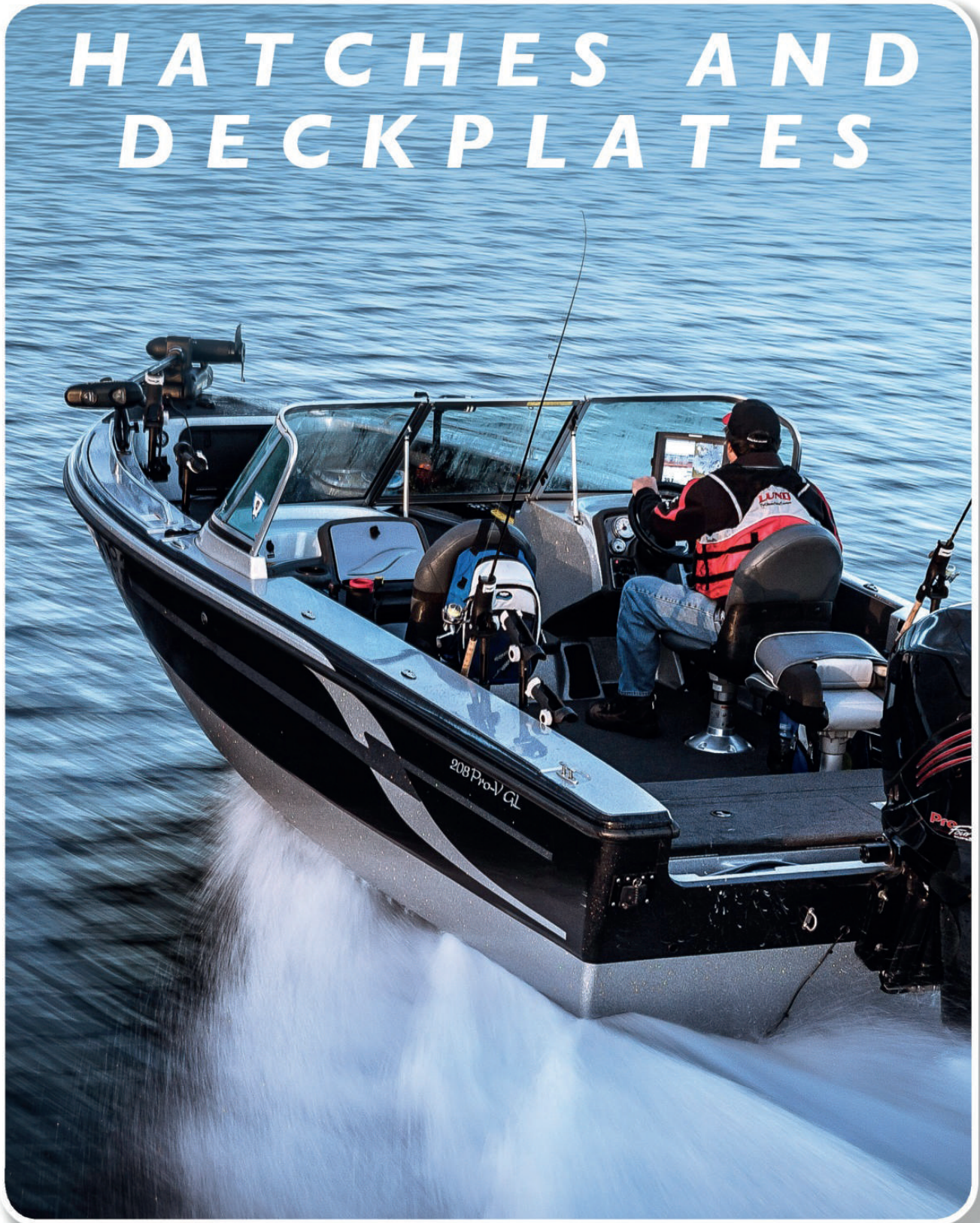
Hanging Locker Hamper

Space saving hanging hamper fits into lockers to hold laundry, wet gear, or to store bulk items. Ventilated mesh bag snaps onto hood, and can be quickly removed and carried to shore with the convenient carry handles. Keeps cabin area free of clutter, and provides a way to manage a weekend of laundry.

#3133-0
Color: Blue
Size: 34"H x 11"W x 11"D
Unit Weight: 1.5 lbs.



HATCHES AND DECKPLATES





1115 Hatch

Available in weather-tight cam, with dog down latch, or durable high-traffic slam latch, in 11" x 15" size.



1317 Cam Hatch

This hatch comes with twin cam latches for tight seal of the beveled and skirted lid, in unique 13" x 17" size.



1323 Hatch

Larger 13" x 23" size with dog down slam or cam latch, can be used for wet or dry storage with weather-tight seal.



1330 Hatch

The larger hatch size at 13" x 30" with twin cam latches is durable with a clean look above or below deck.



1115 Tackle Hatch

Ideal for extra tackle storage, featuring 4 individual removable boxes with lids, that lock into position to prevent sliding.



1323 Tackle Hatch

This Tackle Hatch uses the popular Plano® 3700 Series lure boxes and can be mounted both horizontally or vertically.



Hatch Liners

Heavy duty, roto-molded hatch liners are great for extra storage, dry or wet, including option of adding drains or water intakes for live wells.



Deck Plates

Available in Pry Out or Screw Out styles, perfect for use where electrical or hose connections require frequent access.

Tempress®

Hatches



13 x 23" Tackle Hatch

The 13" x 23" Tackle Hatch uses the popular Plano® 3700 Series lure boxes and can be mounted both horizontally and vertically. Since we pair this with our line of proven Access Hatches, these tackle centers are strong enough to be walked on and are available in a wide range of colors.



11" x 15" Access Cam Tackle Hatch

The Tempress® Access Tackle Systems provides extra storage. The 11" x 15" Tackle Hatch features 4 removable boxes with lids. The boxes lock into position to prevent sliding when in motion or in rough weather.



11" x 15" Tackle Hatch:

#44380 - White
44383 - Dark Gray
Size: 7.5"H x 15"W x 11"D
Unit Weight: 5 lbs.

13" x 23" Tackle Hatch:

#44580 - White
44583 - Dark Gray
Size: 11"H x 23"W x 13"D
Unit Weight: 11 lbs.



11" x 15" Cam Hatch



13" x 17" Cam Hatch



13" x 23" Cam Hatch



13" x 30" Cam Hatch



11" x 15" Slam Hatch



13" x 23" Slam Hatch

11" x 15" Cam Hatch:

#44330 - White
 # 44333 - Dark Gray
 Size: 1.5"H x 15"W x 11"D
 Unit Weight: 2 lbs.
 Cut-Out Size: 8⁵/₈" x 12¹/₂"

13" x 23" Cam Hatch:

#44530 - White
 #44533 - Dark Gray
 Size: 1.5"H x 23"W x 13"D
 Unit Weight: 4.5 lbs.
 Cut-Out Size: 10³/₄" x 20³/₄"

13" x 23" Slam Hatch:

#44430 - White
 #44433 - Dark Gray
 Size: 1.5"H x 23"W x 13"D
 Unit Weight: 4.5 lbs.
 Cut-Out Size: 10³/₄" x 20³/₄"

13" x 17" Cam Hatch:

#44630 - White
 #44633 - Dark Gray
 Size: 1.5"H x 17"W x 13"D
 Unit Weight: 3 lbs.
 Cut-Out Size: 10⁵/₈" x 14¹/₂"

13" x 30" Cam Hatch:

#44730 - White
 #44733 - Dark Gray
 Size: 1.5"H x 30"W x 13"D
 Unit Weight: 6 lbs.
 Cut-Out Size: 10³/₈" x 27¹/₂"

11" x 15" Slam Hatch:

#44230 - White
 #44233 - Dark Gray
 Size: 1.5"H x 15"W x 11"D
 Unit Weight: 2 lbs.
 Cut-Out Size: 8⁵/₈" x 12¹/₂"

Access Cam Hatch

The Access Cam Hatch is made from glass filled polypropylene, for strength and durability. All Access Hatches are designed for heavy traffic areas, and will hold up with walking or standing. The Access Cam Hatch features a dog down latch that compresses the gasket to create a weather-tight seal from a quarter turn of the wrist. Access Hatches also utilize a patented integral hinge assembly that allows for easy lid removal. The beveled and skirted lid covers all fasteners for a clean look above or below decks. Perfect choice for easy dry storage, access to bait or fish wells, or electrical and plumbing lines. Fasteners required, 10 ea. #12 Pan Head self-tapping screws.

Access Slam Hatch

The Access Slam Hatch is made from glass filled polypropylene, for strength and durability. All Access Hatches are designed for heavy traffic areas, and will hold up with walking or standing. The Access Slam Hatch features an easy close slam latch that forms a weather-tight seal just by closing the hatch. Access Hatches also utilize a patented integral hinge assembly that allows for easy lid removal. The beveled and skirted lid covers all fasteners for a clean look above or below decks. Perfect choice for easy dry storage, access to bait or fish wells, or electrical and plumbing lines. Fasteners required, 10 ea. #12 Pan Head self-tapping screws.

Tempress®

Hatch Liners

Heavy-duty, roto-molded hatch liners are great for adding extra storage to your boat. They work well for dry or wet storage. Our liners feature places to add drains and water intakes, serving as great live wells.



Access Liners

The Access Hatch Liners work with all Tempress® hatches to provide secure dry storage for smaller items such as wallets, keys, and cameras. The liners drop into the installed hatch or are installed under the flange.

Tackle Liners

The replacement Tackle Liner replaces the snap-in liner box for the Tackle Hatch series, and is installed under the hatch flange. The individual boxes that fit into the liners are sold separately.



1115 Access Liner 6"

#41400, White
Size: 6"H x 11"W x 7"D
Unit Weight: 2 lbs.

1323 Access Liner 12"

#41506, White
Size: 12"H x 23.5"W x 13"D
Unit Weight: 3.5 lbs.

1317 Access Liner 12"

#41512, White
Size: 12"H x 23.5"W x 13"D
Unit Weight: 3 lbs.

1330 Access Liner 12"

#41518, White
Size: 12"H x 30.5"W x 13"D
Unit Weight: 4 lbs.

1323 Access Liner 9"

#41504, White
Size: 9"H x 23.5"W x 13"D
Unit Weight: 3 lbs.

1323 Tackle Liner

#41519, White
Size: 10.5"H x 23"W x 13"D
Unit Weight: 3.5 lbs.

Deck Plates



Screw Out Deck Plates

Weathertight Screw Out Deck Plates feature a secure screw-out center, with O-ring seal and grooved flange bottom for bedding compound retention. Perfect for use where hose or electrical connections require frequent access. The low-profile design looks great on any boat. These heavy-duty plates are corrosion resistant and feature a safety-tread textured surface. Available in a variety of colors in 4", 6", and 8" sizes.



Screw Out Deck Plate



Pry Out Deck Plate

Pry Out Deck Plates

Weathertight Pry Out Deck Plates feature a secure pry-out center, with O-ring seal and grooved flange bottom for bedding compound retention. Perfect for areas that require infrequent access. The low-profile design looks great on any boat. These heavy-duty plates are corrosion resistant and feature a safety-tread textured surface. Available in a variety of colors in 6" and 8" sizes.

4" Screw Out

#43030 - White
 #43033 - Dark Gray
 #43035 - Black
 Size: 4.75" dia.
 Unit Weight: .25 lbs.
 Cut-Out Size: 4.50"

6" Screw Out

#43130 - White
 #43133 - Dark Gray
 #43135 - Black
 Size: 6.5" dia.
 Unit Weight: .5 lbs.
 Cut-Out Size: 6.50"

8" Screw Out

#43390 - White
 #43393 - Dark Gray
 #43395 - Black
 Size: 8.625" dia.
 Unit Weight: .75 lbs.
 Cut-Out Size: 8.50"

6" Pry Out

#43190 - White
 #43193 - Dark Gray
 #43195 - Black
 Size: 6.5" dia.
 Unit Weight: .5 lbs.
 Cut-Out Size: 6.50"

8" Pry Out

#43330 - White
 #43333 - Dark Gray
 #43335 - Black
 Size: 8.625" dia.
 Unit Weight: .75 lbs.
 Cut-Out Size: 8.50"

Tempress®

KAYAK GEAR



Kayak Gear

Get organized for your next outing on the lake or river. Keep your gear at your fingertips: your rod, your tackle, and your personal items can be safe and secure along with you in your kayak. Tote it, secure it, and keep your necessary items right where you need them with X•Pak Kayak Gear!



Fish N' Tote

The X•Pak Fish N' Tote gives you the ability to organize and transport your fishing gear in the stern tank well of your kayak. This portable organizer has a wide range of features making your day on the water safe and enjoyable including a removeable, padded shoulder strap for easy carrying. Self-repairing nylon zippers with large molded rubber pulls. Removeable liner for easy cleaning. Accessory pockets in each end for quick access. Interior holds up to 6 tackle trays plus gear. Four molded D-rings for tie downs.

#35406

Size: 18.5"H x 13.25"W x 11.50"D

Unit Weight: 3.2 lbs.



Crate Cover

The new X•Pak Crate Cover fits over your standard 13"x13" crate to maximize storage and organization of your gear. Made of marine grade polyester fabric, the Crate Cover also features a removable, padded shoulder strap, two molded resin rod holders, front and rear tool and gear organizer pockets and acetal attachment hardware.

#35307

Size: 11.50"H x 13.25"W x 13.25"D

Unit Weight: 2 lbs



Cockpit Deck Caddy

Here's your solution to keeping your gear organized and ready to use when cruising and navigating. The Cockpit Deck Caddy stretches over the cowl of most sit-inside kayaks and includes removable accessories for charts, personal gear and an insulated pocket for beverages and snacks. Stretchable bungee attachment with size adjustment yoke. Large rubberized mesh pocket with self-repairing zippers. Removable, clip-on insulated water bottle pouch, clip-on accessory water-tight chart/map pouch. Reflective striping for visibility.

#35205

Size: 27"L x 28"W x 5"D

Unit Weight: 1.75 lbs.



Can Coolers



Keep your favorite beverage “cool” with a BoatMates® Can Cooler or Bottle Buddy. A fun way to add color to your dock party or lakeside cook-out. A variety of colors and nautical sayings are a great way to keep everyone’s beverage identified.

We are continually adding to our Can Cooler assortment. Please contact us for new colors and themes.

Nauti Girl
Product #: 22126
Color: Pink/White

Keep Calm and Sail On
Product #: 22125
Color: Blue/Yellow

Reel Men Gut Fish
Product #: 22127
Color: Navy/White

Captain (Bottle Buddy)
Product #: 22118
Color: Navy/Gold

Pirate (Bottle Buddy)
Product #: 22111
Color: Black/White

ShipFaced
Product #: 22108
Color: Yellow/Blue

Why Work When You Can Fish
Product #: 22109
Color: Green/Black

Surrender The Booty
Product #: 22117
Color: Yellow/Black

The Sun and The Sand...
Product #: 22128
Color: Lime Green/White

Captain
Product #: 22106
Color: Navy/Gold

Anchors Aweigh
Product #: 22123
Color: Black/White

I'm The Captain, Get Over It!
Product #: 22115
Color: Blue/White

Happiness Is A Man And His Boat
Product #: 22114
Color: Navy/White

Booty Call
Product #: 22124
Color: Black/White

Aquaholic
Product #: 22107
Color: Teal/White

I'm On A Boat
Product #: 22105
Color: Red/White

Get Reel
Product #: 22113
Color: Lime Green/Blue

Salty Dog
Product #: 22116
Color: Red/White

Custom YETI® Coolers & Accessories



Derek DeYoung Coolers

Make a great cooler even better!
In collaboration with YETI® Coolers and artist Derek DeYoung, Tempress® is now offering the “DeYoung Ultimate Coolers”. We were able to successfully replicate

Derek’s amazing artwork of a Tarpon flank and a Trout flank using digital imagery on marine grade vinyl. These are easy to clean and durable for any outdoor activity.

Accessories

DeYoung Trout Cooler Cushion 35 YETI®—90915

DeYoung Tarpon Cooler Cushion 35 YETI®—90916

DeYoung Trout Wrap 35 YETI®—90917

DeYoung Tarpon Wrap 35 YETI®—90918



#90911



Brown Trout Cooler —35 Qt. Tundra

Product #: 90911
21"L x 15.5"D x 18"H
Unit Weight: 19 lbs.



#90912



Tarpon Cooler —35 Qt. Tundra

Product #: 90912
21"L x 15.5"D x 18"H
Unit Weight: 19 lbs.

Custom Cushions

We are able to digitally replicate your company or organization logos onto YETI® coolers and cushions. These are ideal for incentive gifts, charity auction items or special events. Contact us for sizes, availability and pricing.



Tempress® proudly supports the following organizations:



Tempress

Outdoor Photography By:



Tempress®, Fish-On!®, BoatMates® and X•Pak are registered trademarks and/or copyrights of Tempress® Products, LP. Mr. Crappie® is a registered trademark of Wally Marshall. Yeti® is a registered trademark of Yeti® Coolers. Plano® is a registered trademark of Plano® Storage Solutions.

Tempress® reserves the right to discontinue products, change prices and specifications, materials, colors and designs at any time without incurring obligations for products previously produced.

Member of



National Marine
Manufacturers Association

Learn more about boat seating and accessories on our website.